

# DRIVERS ROUTE KNOWLEDGE DIAGRAMS

## FREIGHT LINES

MEEKS ROAD

MARRICKVILLE

DULWICH HILL

HURLSTONE PARK

CANTERBURY

CAMPSIE

CAMPSIE TO  
ENFIELD YARD SOUTH

ENFIELD YARD SOUTH

ENFIELD YARD NORTH

CHULLORA JUNCTION

FLEMINGTON JUNCTION

**Effective Date:** January 2025

**Version:** 4.37

### Explanatory Notes:

Navigate to your area of interest via the station index or by using links created in Adobe bookmarks.

This document is approved for **route knowledge only**.

**Do not use these diagrams for any safety related purpose** without validating the information against a controlled source or in the field.

Information in these diagrams is uncontrolled.

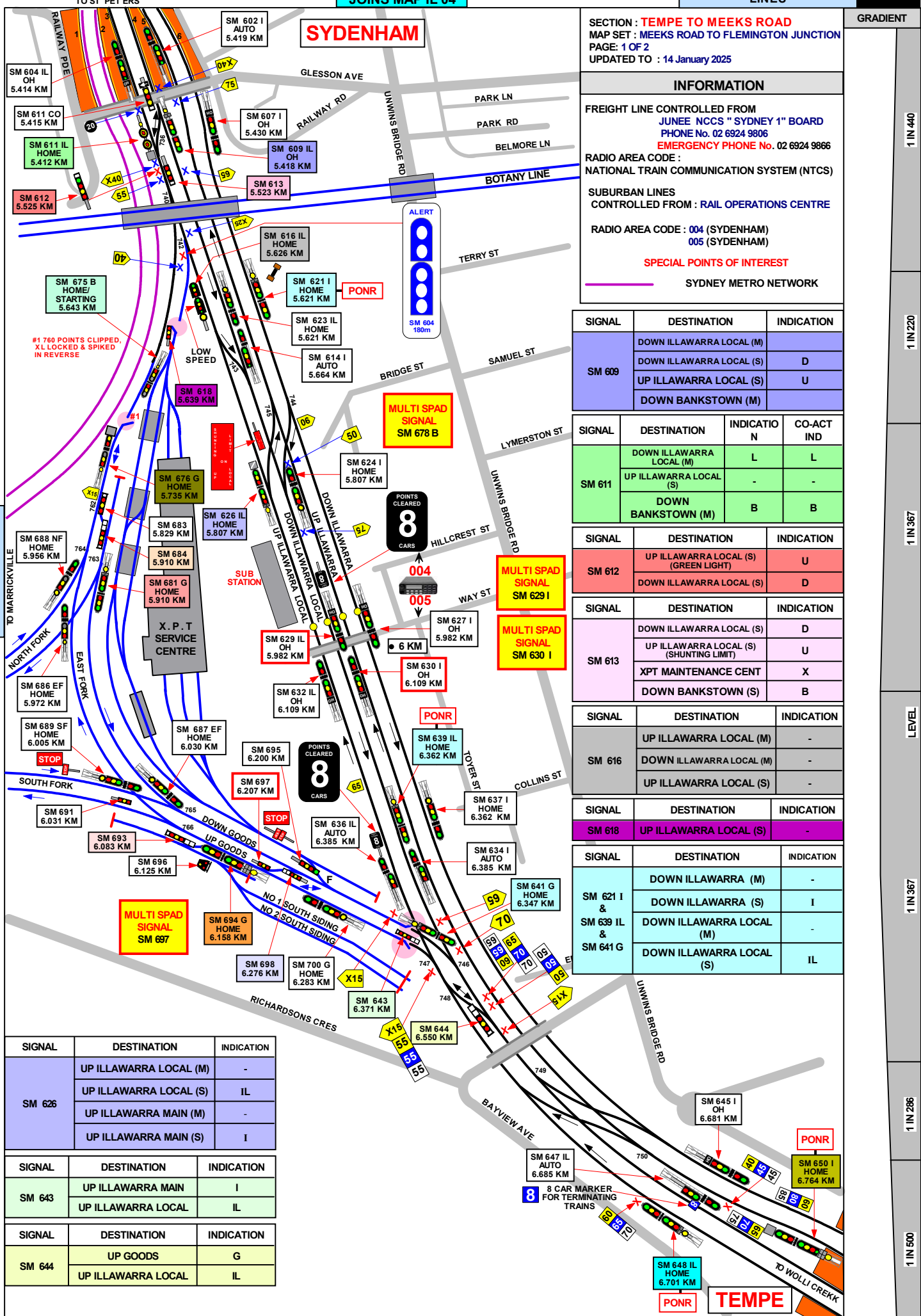
Please report any updates to  
[gjs.support@transport.nsw.gov.au](mailto:gjs.support@transport.nsw.gov.au)



**Copyright:** Sydney Trains

**Ownership:** Geospatial Services

**Location:** TRIM Record No.D2015/562



SECTION : TEMPE TO MEEKS ROAD  
 MAP SET : MEEKS ROAD TO FLEMINGTON JUNCTION  
 PAGE: 1 OF 2  
 UPDATED TO : 14 January 2025

**INFORMATION**

FREIGHT LINE CONTROLLED FROM  
 JUNEE NCCS " SYDNEY 1" BOARD  
 PHONE No. 02 6924 9806  
 EMERGENCY PHONE No. 02 6924 9866

RADIO AREA CODE :  
 NATIONAL TRAIN COMMUNICATION SYSTEM (NTCS)

SUBURBAN LINES  
 CONTROLLED FROM : RAIL OPERATIONS CENTRE

RADIO AREA CODE : 004 (SYDENHAM)  
 005 (SYDENHAM)

SPECIAL POINTS OF INTEREST  
 SYDNEY METRO NETWORK

| SIGNAL | DESTINATION              | INDICATION |
|--------|--------------------------|------------|
| SM 609 | DOWN ILLAWARRA LOCAL (M) |            |
|        | DOWN ILLAWARRA LOCAL (S) | D          |
|        | UP ILLAWARRA LOCAL (S)   | U          |
|        | DOWN BANKSTOWN (M)       |            |

| SIGNAL | DESTINATION              | INDICATION | CO-ACT IND |
|--------|--------------------------|------------|------------|
| SM 611 | DOWN ILLAWARRA LOCAL (M) | L          | L          |
|        | UP ILLAWARRA LOCAL (S)   | -          | -          |
|        | DOWN BANKSTOWN (M)       | B          | B          |

| SIGNAL | DESTINATION                          | INDICATION |
|--------|--------------------------------------|------------|
| SM 612 | UP ILLAWARRA LOCAL (S) (GREEN LIGHT) | U          |
|        | DOWN ILLAWARRA LOCAL (S)             | D          |

| SIGNAL | DESTINATION                             | INDICATION |
|--------|-----------------------------------------|------------|
| SM 613 | DOWN ILLAWARRA LOCAL (S)                | D          |
|        | UP ILLAWARRA LOCAL (S) (SHUNTING LIMIT) | U          |
|        | XPT MAINTENANCE CENT                    | X          |
|        | DOWN BANKSTOWN (S)                      | B          |

| SIGNAL | DESTINATION              | INDICATION |
|--------|--------------------------|------------|
| SM 616 | UP ILLAWARRA LOCAL (M)   | -          |
|        | DOWN ILLAWARRA LOCAL (M) | -          |
|        | UP ILLAWARRA LOCAL (S)   | -          |

| SIGNAL | DESTINATION            | INDICATION |
|--------|------------------------|------------|
| SM 618 | UP ILLAWARRA LOCAL (S) | -          |

| SIGNAL                          | DESTINATION              | INDICATION |
|---------------------------------|--------------------------|------------|
| SM 621 I & SM 639 IL & SM 641 G | DOWN ILLAWARRA (M)       | -          |
|                                 | DOWN ILLAWARRA (S)       | I          |
|                                 | DOWN ILLAWARRA LOCAL (M) | -          |
|                                 | DOWN ILLAWARRA LOCAL (S) | IL         |

| SIGNAL | DESTINATION            | INDICATION |
|--------|------------------------|------------|
| SM 626 | UP ILLAWARRA LOCAL (M) | -          |
|        | UP ILLAWARRA LOCAL (S) | IL         |
|        | UP ILLAWARRA MAIN (M)  | -          |
|        | UP ILLAWARRA MAIN (S)  | I          |

| SIGNAL | DESTINATION        | INDICATION |
|--------|--------------------|------------|
| SM 643 | UP ILLAWARRA MAIN  | I          |
|        | UP ILLAWARRA LOCAL | IL         |

| SIGNAL | DESTINATION        | INDICATION |
|--------|--------------------|------------|
| SM 644 | UP GOODS           | G          |
|        | UP ILLAWARRA LOCAL | IL         |

1 IN 440

1 IN 220

1 IN 367

LEVEL

1 IN 367

1 IN 286

1 IN 500

**SECTION : TEMPE TO MEEKS ROAD**  
 MAP SET : MEEKS ROAD TO FLEMINGTON JUNCTION  
 PAGE : 2 OF 2  
 UPDATED TO : 30 September 2024

FREIGHT LINE CONTROLLED FROM  
 JUNE NCCS " SYDNEY 1" BOARD  
 PHONE No. 02 6924 9806  
 EMERGENCY PHONE No. 02 6924 9866  
 RADIO AREA CODE :  
 NATIONAL TRAIN COMMUNICATION SYSTEM (NTCS)

SUBURBAN LINES  
 CONTROLLED FROM : RAIL OPERATIONS CENTRE  
 RADIO AREA CODE : 004 (SYDENHAM)  
 005 (SYDENHAM)

APPENDICES PLEASE SEE APPENDICES FOR POINTS OF NO RETURN, TERMINATING MOVEMENTS AND SIDING LENGTHS

| SIGNAL    | DESTINATION            | INDICATION |
|-----------|------------------------|------------|
| SM 648 IL | UP GOODS (M)           | -          |
|           | UP GOODS (S)           | G          |
|           | UP ILLAWARRA LOCAL (M) | -          |
|           | UP ILLAWARRA LOCAL (S) | IL         |

| SIGNAL   | DESTINATION            | INDICATION |
|----------|------------------------|------------|
| SM 650 I | UP GOODS (M)           | G          |
|          | UP GOODS (S)           | G          |
|          | UP ILLAWARRA LOCAL (M) | IL         |
|          | UP ILLAWARRA LOCAL (S) | IL         |
|          | UP ILLAWARRA (M)       | -          |
|          | UP ILLAWARRA (S)       | I          |

| PROPELLING MOVEMENTS       |                            |
|----------------------------|----------------------------|
| FROM                       | TO                         |
| CLEAR OF No. 775 CROSSOVER | CLEAR OF No. 770 CROSSOVER |
| CLEAR OF No. 770 CROSSOVER | CLEAR OF No. 775 CROSSOVER |

THESE PROPELLING MOVEMENTS ARE FOR NON-ELECTRIC ROLLING STOCK ONLY AND MUST BE CARRIED OUT AS SHOWN IN THE INSTRUCTIONS IN NTR 424 / OSP 15 IN THE NETWORK RULES AND OPERATORS SPECIFIC PROCEDURES MANUALS

| SIGNAL   | DESTINATION        | INDICATION |
|----------|--------------------|------------|
| SM 675 B | DOWN GOODS (M)     | -          |
|          | DOWN GOODS (S)     | G          |
|          | DOWN BANKSTOWN (M) | -          |
|          | DOWN BANKSTOWN (S) | B          |

| SELF-PROPELLED DIESEL TRAINS MAY TERMINATE ON |                                                |                                                                                                          |
|-----------------------------------------------|------------------------------------------------|----------------------------------------------------------------------------------------------------------|
| FROM                                          | TERMINATE AT                                   | THEN GO TO                                                                                               |
|                                               | DOWN EAST FORK                                 | RETURN TO THE UP NORTH FORK VIA No. 762 POINTS.                                                          |
|                                               | DOWN GOODS LINE                                | RETURN TO THE UP SOUTH FORK VIA No. 770 POINTS.                                                          |
|                                               | DOWN ILLAWARRA LOCAL LINE AT SIGNAL No. SM 644 | RETURN TO EITHER THE UP NORTH FORK VIA Nos. 775 AND 773 POINTS OR THE DOWN SOUTH FORK VIA No. 775 POINTS |

| SIGNAL | DESTINATION              | INDICATION |
|--------|--------------------------|------------|
| SM 676 | UP ILLAWARRA LOCAL (S)   | -          |
|        | UP ILLAWARRA LOCAL (M)   | U          |
|        | DOWN ILLAWARRA LOCAL (M) | D          |

| SIGNAL   | DESTINATION         | INDICATION |
|----------|---------------------|------------|
| SM 681 G | DOWN EAST FORK (M)  | -          |
|          | DOWN EAST FORK (S)  | EF         |
|          | DOWN NORTH FORK (M) | -          |
|          | DOWN NORTH FORK (S) | NF         |

| SIGNAL | DESTINATION         | INDICATION |
|--------|---------------------|------------|
| SM 684 | GOODS LINE          | G          |
|        | NORTH SHUNTING NECK | N          |

| SIGNAL | DESTINATION | INDICATION |
|--------|-------------|------------|
| SM 693 | UP GOODS    | UG         |
|        | SIDING      | S          |

| SIGNAL   | DESTINATION          | INDICATION |
|----------|----------------------|------------|
| SM 694 G | UP SHUNTING NECK (S) | SN         |
|          | UP SOUTH FORK (M)    | -          |
|          | UP SOUTH FORK (S)    | SF         |
|          | UP EAST FORK (M)     | -          |
|          | UP EAST FORK (S)     | EF         |

| SIGNAL | DESTINATION | INDICATION |
|--------|-------------|------------|
| SM 698 | UP GOODS    | UG         |
|        | DOWN GOODS  | DG         |

SECTION : **MEEKS ROAD TO MARRICKVILLE**  
 MAP SET : MEEKS ROAD TO FLEMINGTON JUNCTION  
 UPDATED TO : 17 October 2024

**INFORMATION**

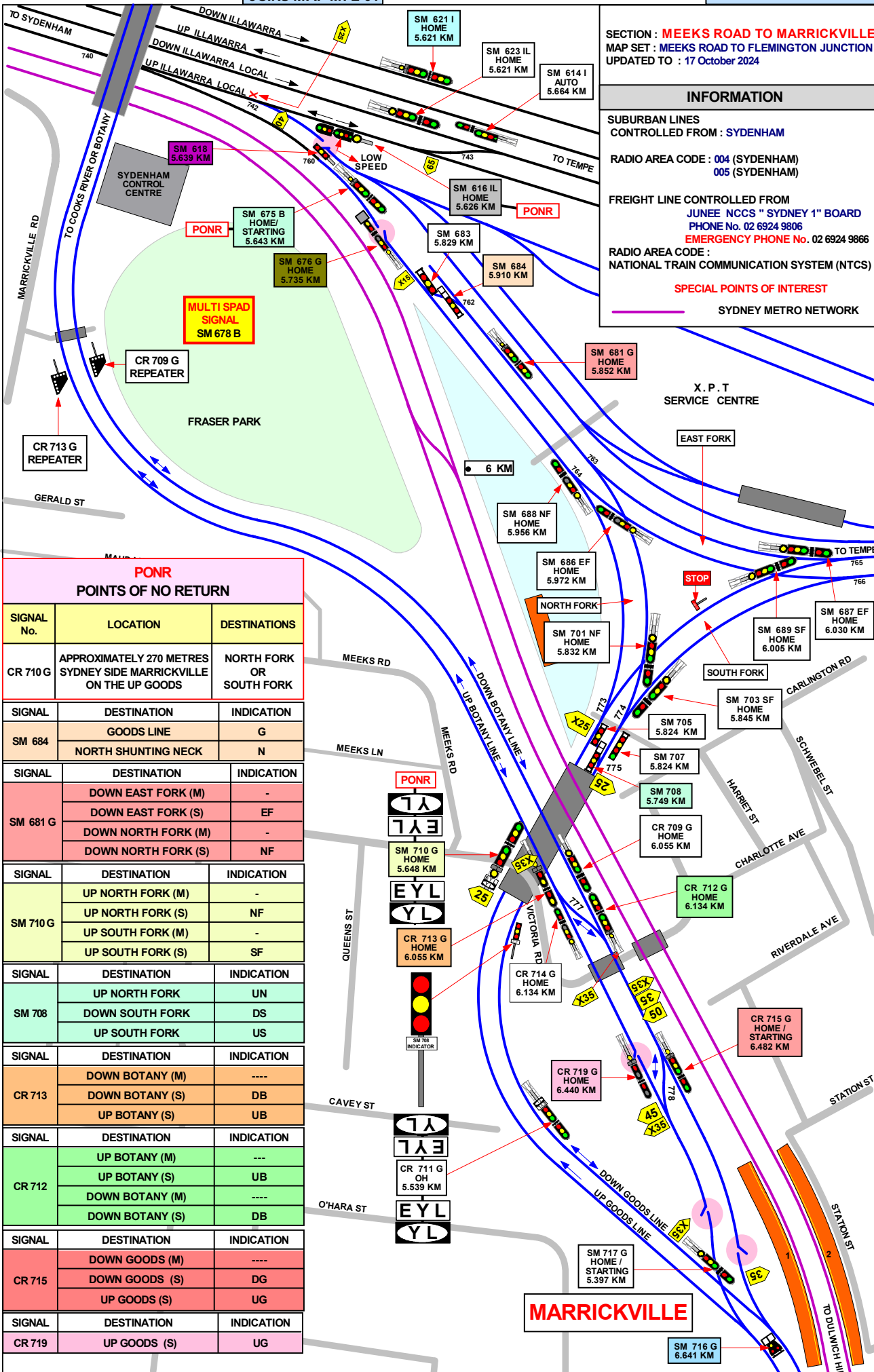
SUBURBAN LINES  
 CONTROLLED FROM : SYDENHAM

RADIO AREA CODE : 004 (SYDENHAM)  
 005 (SYDENHAM)

FREIGHT LINE CONTROLLED FROM  
 JUNE E NCCS " SYDNEY 1" BOARD  
 PHONE No. 02 6924 9806  
**EMERGENCY PHONE No. 02 6924 9866**

RADIO AREA CODE :  
 NATIONAL TRAIN COMMUNICATION SYSTEM (NTCS)

**SPECIAL POINTS OF INTEREST**  
 SYDNEY METRO NETWORK



**PONR  
 POINTS OF NO RETURN**

| SIGNAL No. | LOCATION                                                          | DESTINATIONS             |
|------------|-------------------------------------------------------------------|--------------------------|
| CR 710 G   | APPROXIMATELY 270 METRES SYDNEY SIDE MARRICKVILLE ON THE UP GOODS | NORTH FORK OR SOUTH FORK |
| SIGNAL     | DESTINATION                                                       | INDICATION               |
| SM 684     | GOODS LINE                                                        | G                        |
|            | NORTH SHUNTING NECK                                               | N                        |
| SIGNAL     | DESTINATION                                                       | INDICATION               |
| SM 681 G   | DOWN EAST FORK (M)                                                | -                        |
|            | DOWN EAST FORK (S)                                                | EF                       |
|            | DOWN NORTH FORK (M)                                               | -                        |
|            | DOWN NORTH FORK (S)                                               | NF                       |
| SIGNAL     | DESTINATION                                                       | INDICATION               |
| SM 710 G   | UP NORTH FORK (M)                                                 | -                        |
|            | UP NORTH FORK (S)                                                 | NF                       |
|            | UP SOUTH FORK (M)                                                 | -                        |
|            | UP SOUTH FORK (S)                                                 | SF                       |
| SIGNAL     | DESTINATION                                                       | INDICATION               |
| SM 708     | UP NORTH FORK                                                     | UN                       |
|            | DOWN SOUTH FORK                                                   | DS                       |
|            | UP SOUTH FORK                                                     | US                       |
| SIGNAL     | DESTINATION                                                       | INDICATION               |
| CR 713     | DOWN BOTANY (M)                                                   | ----                     |
|            | DOWN BOTANY (S)                                                   | DB                       |
|            | UP BOTANY (S)                                                     | UB                       |
| SIGNAL     | DESTINATION                                                       | INDICATION               |
| CR 712     | UP BOTANY (M)                                                     | ---                      |
|            | UP BOTANY (S)                                                     | UB                       |
|            | DOWN BOTANY (M)                                                   | ----                     |
|            | DOWN BOTANY (S)                                                   | DB                       |
| SIGNAL     | DESTINATION                                                       | INDICATION               |
| CR 715     | DOWN GOODS (M)                                                    | ----                     |
|            | DOWN GOODS (S)                                                    | DG                       |
|            | UP GOODS (S)                                                      | UG                       |
| SIGNAL     | DESTINATION                                                       | INDICATION               |
| CR 719     | UP GOODS (S)                                                      | UG                       |

1 IN 100

1 IN 90

1 IN 100

1 IN 170

| SIGNAL   | DESTINATION     | INDICATION |
|----------|-----------------|------------|
| SM 713 G | DOWN BOTANY (M) | -          |
|          | DOWN BOTANY (S) | DB         |
|          | UP BOTANY (S)   | UB         |

| SIGNAL   | DESTINATION     | INDICATION |
|----------|-----------------|------------|
| SM 716 G | DOWN GOODS (S)  | DG         |
|          | DOWN BOTANY (S) | DB         |

| SIGNAL   | DESTINATION  | INDICATION |
|----------|--------------|------------|
| SM 719 G | UP GOODS (S) | UG         |

| SIGNAL   | DESTINATION     | INDICATION |
|----------|-----------------|------------|
| SM 712 G | UP BOTANY (M)   | -          |
|          | UP BOTANY (S)   | UB         |
|          | DOWN BOTANY (M) | -          |
|          | DOWN BOTANY (S) | DB         |

| SIGNAL   | DESTINATION    | INDICATION |
|----------|----------------|------------|
| SM 715 G | DOWN GOODS (M) | -          |
|          | DOWN GOODS (S) | DG         |
|          | UP GOODS (S)   | UG         |

SUBURBAN LINES  
CONTROLLED FROM : SYDENHAM

RADIO AREA CODE : 005 (SYDENHAM)  
057 (SYDENHAM)

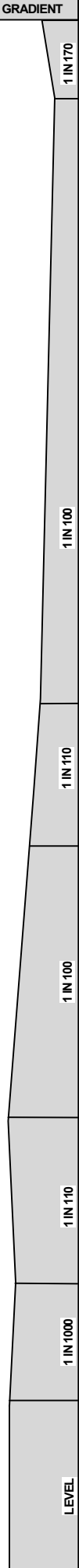
UPDATED : 20 JULY 2015

FREIGHT LINE CONTROLLED FROM  
JUNEE NCCS " SYDNEY 1" BOARD  
PHONE No. 02 6924 9806

EMERGENCY PHONE No. 02 6924 9866  
RADIO AREA CODE :  
NATIONAL TRAIN COMMUNICATION SYSTEM (NTCS)

**MARRICKVILLE**

SECTION : **MARRICKVILLE TO DULWICH HILL**  
 MAP SET : MEEKS ROAD TO FLEMINGTON JUNCTION  
 UPDATED TO : 17 October 2024



**INFORMATION**

FREIGHT LINE CONTROLLED FROM  
 JUNEJ NCCS " SYDNEY 1" BOARD  
 PHONE No. 02 6924 9806  
 EMERGENCY PHONE No. 02 6924 9866  
 RADIO AREA CODE :  
 NATIONAL TRAIN COMMUNICATION SYSTEM (NTCS)  
  
 RADIO AREA CODE : 005 (SYDENHAM)  
 057 (SYDENHAM)

**MARRICKVILLE**

**SPECIAL POINTS OF INTEREST**

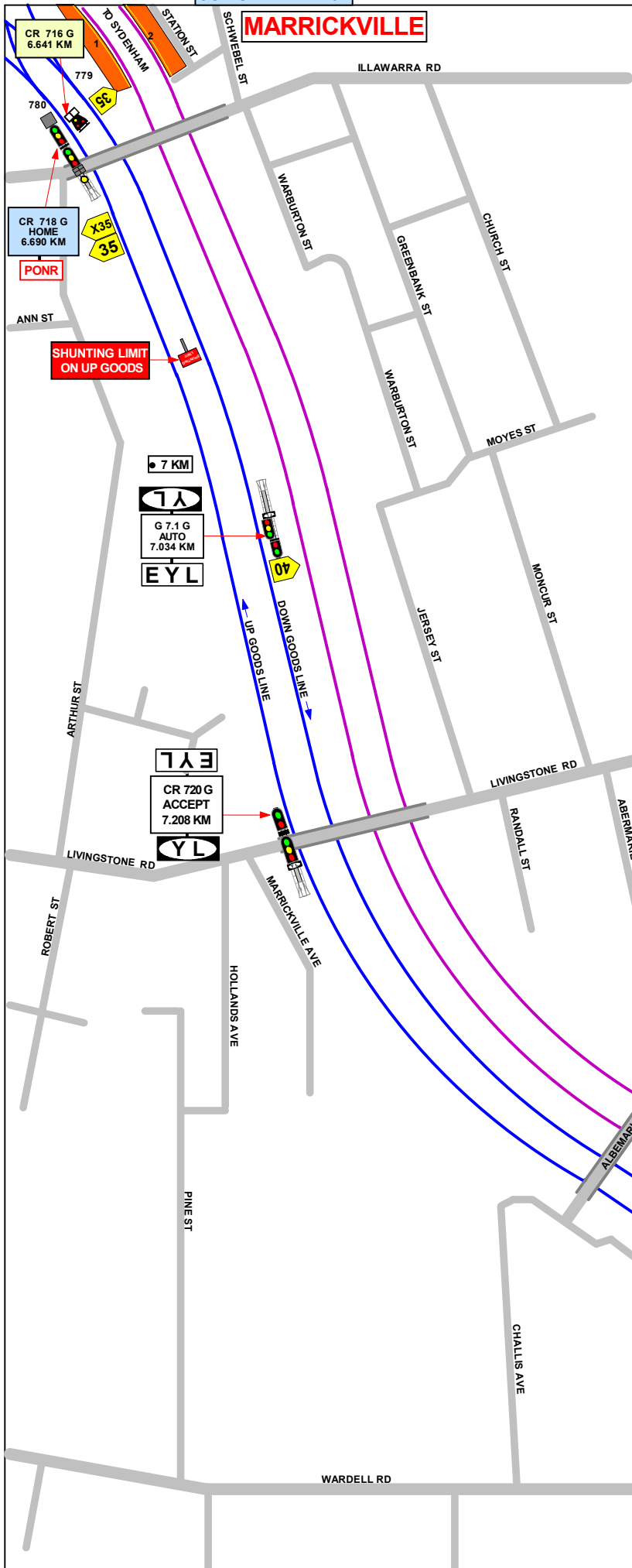
— SYDNEY METRO NETWORK

**PONR**  
 POINTS OF NO RETURN

| SIGNAL No. | LOCATION                                                          | DESTINATIONS                                     |
|------------|-------------------------------------------------------------------|--------------------------------------------------|
| SM 718 G   | APPROXIMATELY 50 METRES COUNTRY SIDE MARRICKVILLE ON THE UP GOODS | UP GOODS LINE OR BOTANY LINE (MARRICKVILLE LOOP) |

| SIGNAL          | DESTINATION     | INDICATION |
|-----------------|-----------------|------------|
| CR 718 G        | UP GOODS (M)    | -          |
|                 | UP GOODS (S)    | UG         |
|                 | UP BOTANY (M)   | UB         |
|                 | UP BOTANY (S)   | UB         |
|                 | DOWN BOTANY (M) | DB         |
| DOWN BOTANY (S) | DB              |            |

| SIGNAL   | DESTINATION | INDICATION |
|----------|-------------|------------|
| CR 716 G | DOWN GOODS  | DG         |
|          | DOWN BOTANY | DB         |



**DULWICH HILL**

DULWICH HILL

SECTION : CAMPSIE TO BELMORE  
MAP SET : MEEKS ROAD TO FLEMINGTON JUNCTION  
AMENDED TO : 17 October 2024

GRADIENT

INFORMATION

FREIGHT LINE CONTROLLED FROM  
JUNEE NCCS " SYDNEY 1" BOARD  
PHONE No. 02 6924 9806  
EMERGENCY PHONE No. 02 6924 9866

RADIO AREA CODE :  
NATIONAL TRAIN COMMUNICATION SYSTEM (NTCS)

RADIO AREA CODE : 005 (SYDENHAM)  
057 (SYDENHAM)

SPECIAL POINTS OF INTEREST

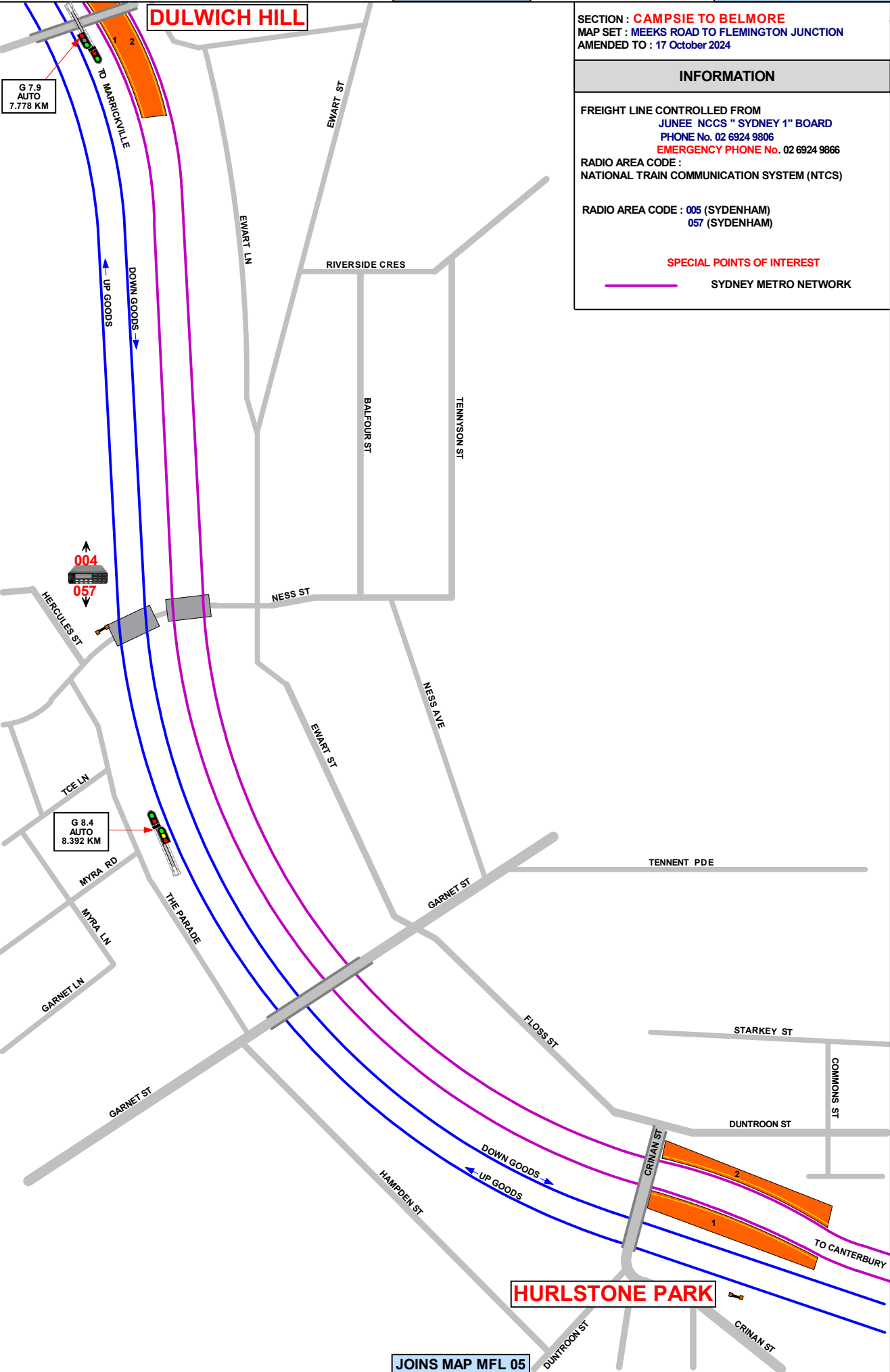
SYDNEY METRO NETWORK

LEVEL

1 IN 425

1 IN 440

1 IN 170



HURLSTONE PARK

**HURLSTONE PARK**

SECTION : **CAMPBIE TO BELMORE**  
MAP SET : MEEKS ROAD TO FLEMINGTON JUNCTION  
AMENDED TO : 17 October 2024

GRADIENT

**INFORMATION**

FREIGHT LINE CONTROLLED FROM  
JUNEE NCCS " SYDNEY 1" BOARD  
PHONE No. 02 6924 9806  
EMERGENCY PHONE No. 02 6924 9866  
RADIO AREA CODE :  
NATIONAL TRAIN COMMUNICATION SYSTEM (NTCS)  
RADIO AREA CODE : 057 (SYDENHAM)

**SPECIAL POINTS OF INTEREST**

SYDNEY METRO NETWORK

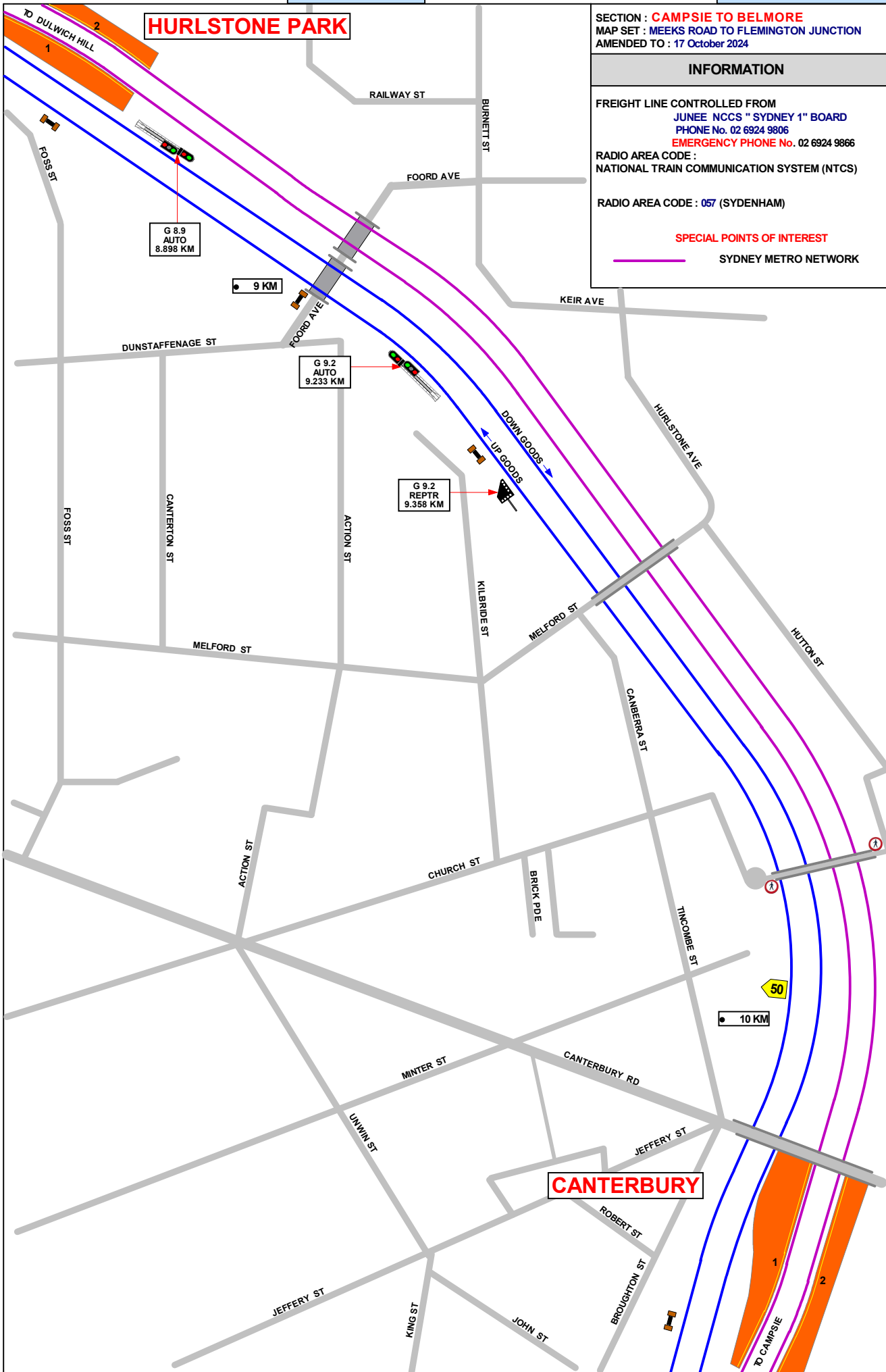
1 IN 170

1 IN 160

1 IN 132

1 IN 100

LEVEL





JOINS MAP MFL 05

**CANTERBURY**

SECTION : **CAMPSTIE TO BELMORE**  
 MAP SET : MEEKS ROAD TO FLEMINGTON JUNCTION  
 AMENDED TO : 17 October 2024

---

**INFORMATION**

FREIGHT LINE CONTROLLED FROM  
 JUNEE NCCS " SYDNEY 1" BOARD  
 PHONE No. 02 6924 9806  
 EMERGENCY PHONE No. 02 6924 9866

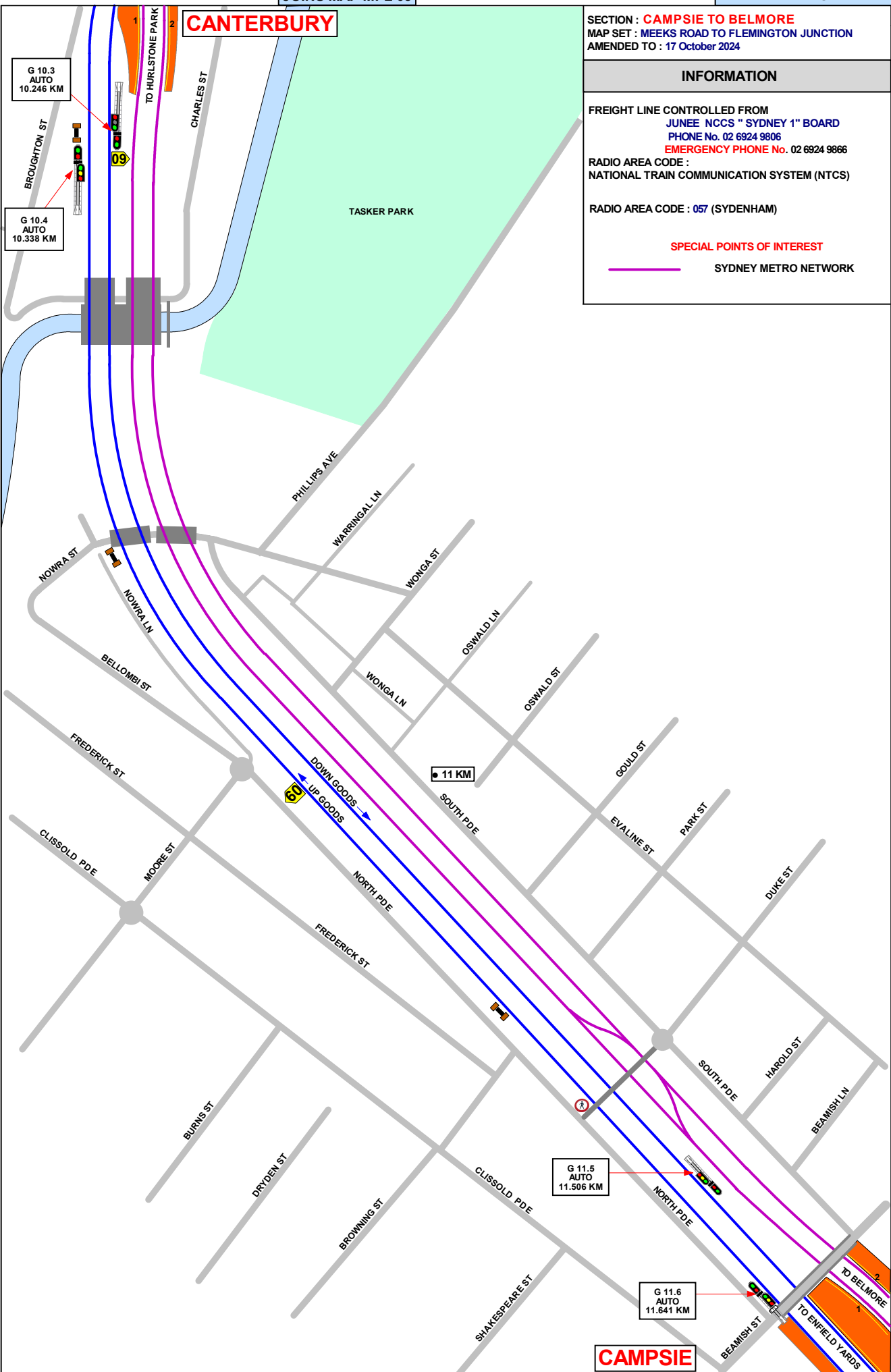
RADIO AREA CODE :  
 NATIONAL TRAIN COMMUNICATION SYSTEM (NTCS)

RADIO AREA CODE : 057 (SYDENHAM)

**SPECIAL POINTS OF INTEREST**

— SYDNEY METRO NETWORK

| GRADIENT | LEVEL |
|----------|-------|
| 1 IN 264 |       |
| 1 IN 100 |       |
| 1 IN 132 |       |
| 1 IN 165 |       |
| 1 IN 400 |       |



JOINS MAP MFL 07

**CAMPSTIE**

TO CANTERBURY

SECTION : **CAMPSIE TO BELMORE**  
MAP SET : MEEKS ROAD TO FLEMINGTON JUNCTION  
AMENDED TO : 17 October 2024

GRADIENT

**INFORMATION**

FREIGHT LINE CONTROLLED FROM  
JUNEE NCCS " SYDNEY 1" BOARD  
PHONE No. 02 6924 9806  
EMERGENCY PHONE No. 02 6924 9866  
RADIO AREA CODE :  
NATIONAL TRAIN COMMUNICATION SYSTEM (NTCS)  
  
RADIO AREA CODE : 057 (SYDENHAM)

**SPECIAL POINTS OF INTEREST**

— SYDNEY METRO NETWORK

**CAMPSIE**

G 11.6  
AUTO  
11.641 KM

09

12 KM

60

50

EYL

G 12.8  
AUTO  
12.793 KM

YL

ED 101 D  
OH  
12.737 KM

EYL

13 KM

**BELMORE**

1 2

1 IN 400

1 IN 150

1 IN 200

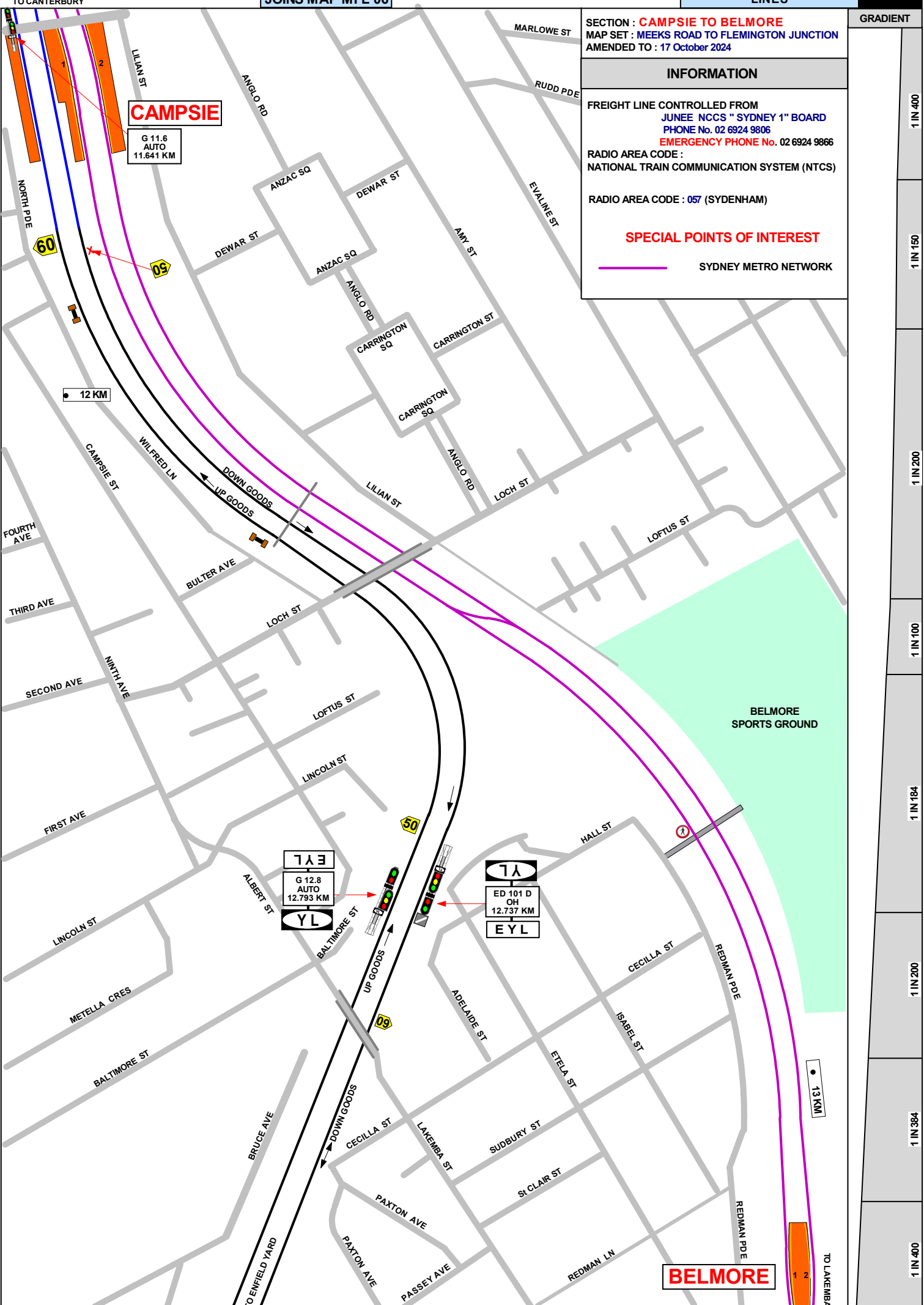
1 IN 100

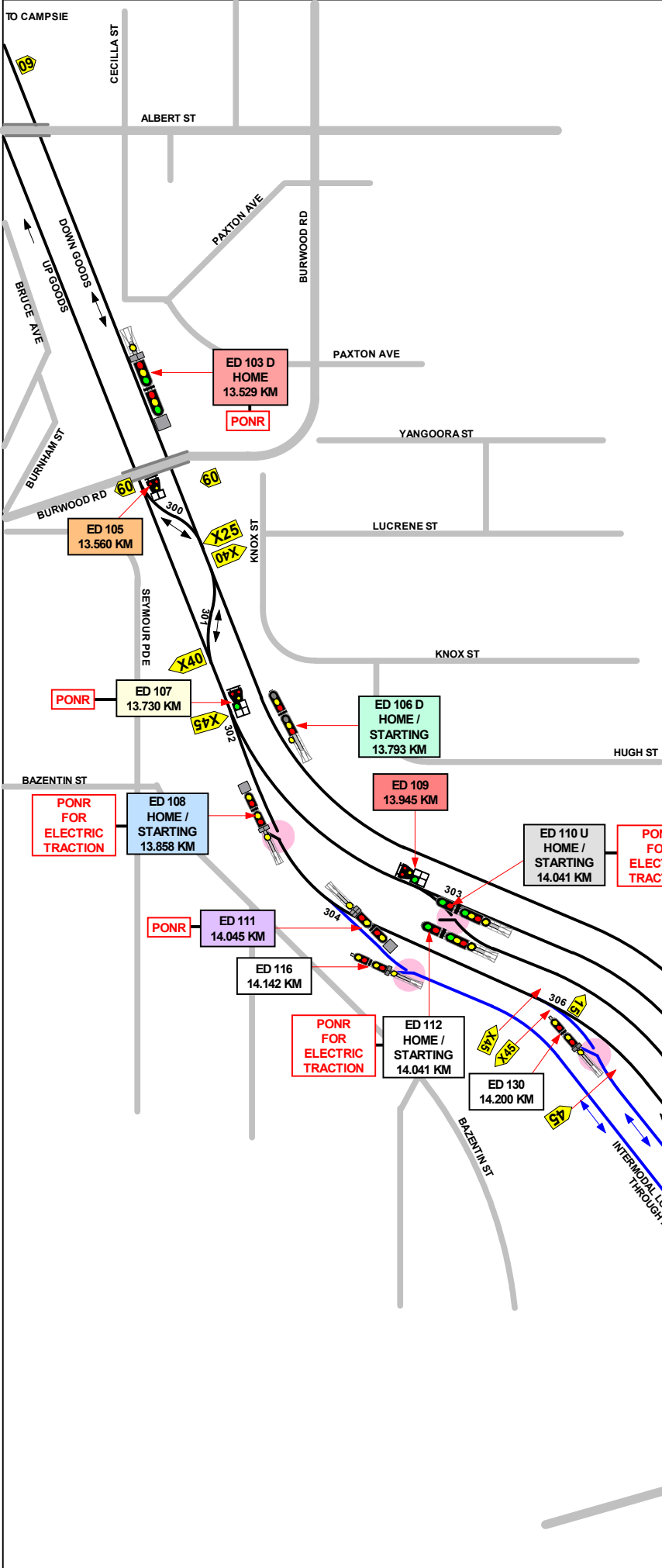
1 IN 184

1 IN 200

1 IN 384

1 IN 400





SECTION : **CAMPSIE TO ENFIELD YARD**  
 MAP SET : **MEEKS ROAD TO FLEMINGTON JUNCTION**  
 AMENDED TO : 17 November 2015

**INFORMATION**

FREIGHT LINE CONTROLLED FROM  
 JUNEE NCCS " SYDNEY 1" BOARD  
 PHONE No. 02 6924 9806  
 EMERGENCY PHONE No. 02 6924 9866

RADIO AREA CODE :  
 NATIONAL TRAIN COMMUNICATION SYSTEM (NTCS)

**SPECIAL POINTS OF INTEREST**

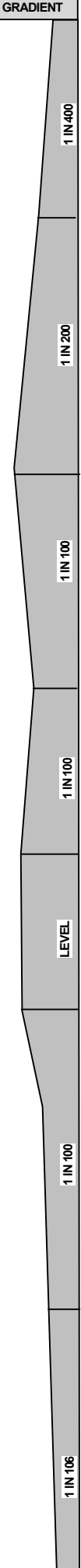
**CAUTION**

POINT OF NO RETURN FOR ELECTRIC TRACTION TO USE DOWN GOODS ROAD VIA 301 POINTS AT ENFIELD SOUTH FOR TURN BACK MOVEMENTS ONLY. FREIGHT LINE IS NO LONGER CONNECTED TO THE BANKSTOWN LINE AT CAMPSIE. ELECTRIC OVERHEAD AVAILABLE ON DOWN GOODS LINE AS FAR AS COUNTRY SIDE OF CAMPSIE PLATFORMS. WRONG ROAD MOVEMENTS AS AS SIGNAL ED 101 EYL ON DOWN GOODS LINE

**PONR**

**POINTS OF NO RETURN**

| SIGNAL No. | LOCATION                  | DESTINATIONS          |
|------------|---------------------------|-----------------------|
| ED 103 D   | DOWN GOODS @ 13.529 km    | ENFIELD YARD OR DELEC |
| ED 107     | UP GOODS @ 13.730 km      | ENFIELD YARD OR DELEC |
| ED 111     | THROUGH ROAD 2 @13.908 km | ENFIELD YARD OR DELEC |



| SIGNAL   | DESTINATION        | INDICATION |
|----------|--------------------|------------|
| ED 103 D | DOWN MAIN (M)      | D          |
|          | DOWN MAIN (S)      | DM         |
|          | UP MAIN (M)        | U          |
|          | UP MAIN (S)        | UM         |
|          | THROUGH ROAD 2 (M) | T2         |

| SIGNAL | DESTINATION   | INDICATION |
|--------|---------------|------------|
| ED 105 | DOWN MAIN (S) | DM         |
|        | UP MAIN (S)   | UM         |

| SIGNAL   | DESTINATION  | INDICATION |
|----------|--------------|------------|
| ED 106 D | UP GOODS (M) | ---        |
|          | UP GOODS (S) | UG         |

| SIGNAL | DESTINATION        | INDICATION  |
|--------|--------------------|-------------|
| ED 107 | UP MAIN (M)        | GREEN LIGHT |
|        | UP MAIN (S)        | UM          |
|        | THROUGH ROAD 2 (M) | T2          |

| SIGNAL | DESTINATION  | INDICATION |
|--------|--------------|------------|
| ED 108 | UP GOODS (M) | ---        |
|        | UP GOODS (S) | UG         |

| SIGNAL | DESTINATION        | INDICATION  |
|--------|--------------------|-------------|
| ED 109 | UP MAIN (M)        | GREEN LIGHT |
|        | UP MAIN (S)        | UM          |
|        | THROUGH ROAD 1 (M) | T1          |

| SIGNAL   | DESTINATION  | INDICATION |
|----------|--------------|------------|
| ED 110 U | UP GOODS (M) | ---        |
|          | UP GOODS (S) | UG         |

| SIGNAL | DESTINATION        | INDICATION |
|--------|--------------------|------------|
| ED 111 | THROUGH ROAD 2 (M) | T2         |
|        | STAGING ROAD 1 (M) | S          |
|        | STAGING ROAD 1 (S) | S1         |
|        | ILC (S)            | LC         |

| SIGNAL | DESTINATION  | INDICATION |
|--------|--------------|------------|
| ED 112 | UP GOODS (M) | ---        |
|        | UP GOODS (S) | UG         |

| SIGNAL | DESTINATION        | INDICATION |
|--------|--------------------|------------|
| ED 116 | THROUGH ROAD 2 (M) | ---        |
|        | THROUGH ROAD 2 (M) | ---        |

| SIGNAL | DESTINATION        | INDICATION |
|--------|--------------------|------------|
| ED 119 | THROUGH ROAD 1 (S) | T1         |
|        | SOUTH ROAD 1 (S)   | 1          |

| SIGNAL | DESTINATION        | INDICATION |
|--------|--------------------|------------|
| ED 125 | SOUTH ROAD 6 (S)   | 6          |
|        | THROUGH ROAD 2 (S) | T2         |

| SIGNAL | DESTINATION        | INDICATION |
|--------|--------------------|------------|
| ED 130 | THROUGH ROAD 2 (M) | ---        |
|        | THROUGH ROAD 2 (M) | ---        |

| SIGNAL   | DESTINATION        | INDICATION |
|----------|--------------------|------------|
| ED 139 S | LOCO STORAGE (S)   | LS         |
|          | THROUGH ROAD 1 (M) | T1         |
|          | NECK (S)           | N          |

| SIGNAL | DESTINATION        | INDICATION |
|--------|--------------------|------------|
| ED 148 | SIDING             | →          |
|        | SIDING             | →          |
|        | THROUGH ROAD 1 (M) | T1         |

| SIGNAL | DESTINATION        | INDICATION |
|--------|--------------------|------------|
| ED 153 | NECK (S)           | N          |
|        | THROUGH ROAD 2 (M) | ---        |

| SIGNAL | DESTINATION        | INDICATION |
|--------|--------------------|------------|
| ED 154 | THROUGH ROAD 2 (S) | T2         |
|        | SIDING (S)         | →          |
|        | SIDING (S)         | →          |

| SIGNAL | DESTINATION        | INDICATION |
|--------|--------------------|------------|
| ED 157 | SIDING             | ↕          |
|        | SIDING             | →          |
|        | THROUGH ROAD 2 (S) | T2         |

| SIGNAL | DESTINATION        | INDICATION |
|--------|--------------------|------------|
| ED 159 | THROUGH ROAD 2 (S) | ---        |

| SIGNAL | DESTINATION        | INDICATION |
|--------|--------------------|------------|
| ED 160 | THROUGH ROAD 2 (S) | T2         |
|        | NECK (S)           | N          |

| SIGNAL | DESTINATION        | INDICATION |
|--------|--------------------|------------|
| ED 163 | THROUGH ROAD 1 (S) | T1         |
|        | SIDING (S)         | ↕          |
|        | SIDING (S)         | →          |

| SIGNAL | DESTINATION        | INDICATION |
|--------|--------------------|------------|
| ED 164 | NECK (S)           | N          |
|        | THROUGH ROAD 1 (S) | T1         |

| SIGNAL | DESTINATION        | INDICATION |
|--------|--------------------|------------|
| ED 175 | LOCO STORAGE (S)   | LS         |
|        | THROUGH ROAD 1 (M) | T1         |

| SIGNAL | DESTINATION        | INDICATION |
|--------|--------------------|------------|
| ED 176 | THROUGH ROAD 1 (S) | T1         |
|        | SIDING (S)         | ↕          |
|        | SIDING (S)         | →          |

| SIGNAL   | DESTINATION        | INDICATION |
|----------|--------------------|------------|
| ED 501 S | STAGING ROAD 1 (M) | ---        |
|          | STAGING ROAD 1 (S) | S1         |
|          | STAGING ROAD 2 (M) | ---        |
|          | STAGING ROAD 2 (S) | S2         |

| SIGNAL   | DESTINATION        | INDICATION |
|----------|--------------------|------------|
| ED 502 S | STAGING ROAD 1 (M) | ---        |
|          | STAGING ROAD 1 (S) | ---        |

| SIGNAL   | DESTINATION        | INDICATION |
|----------|--------------------|------------|
| ED 504 S | STAGING ROAD 1 (M) | ---        |
|          | STAGING ROAD 1 (S) | ---        |

SECTION : **CAMPSIE TO ENFIELD YARD**  
 MAP SET : MEEKS ROAD TO FLEMINGTON JUNCTION  
 UPDATED TO : 20 JULY 2015

**INFORMATION**

FREIGHT LINE CONTROLLED FROM  
 JUNEE NCCS " SYDNEY 2" BOARD  
 PHONE No. 02 6924 9804  
**EMERGENCY PHONE No. 02 6924 9863**  
 RADIO AREA CODE :  
 NATIONAL TRAIN COMMUNICATION SYSTEM (NTCS)  
 RADIO AREA CODE : 038 ( STRATHFIELD )  
 : 895 ( ENFIELD )  
 YARD WORKING : TWO WAY RADIO ONLY

**SPECIAL POINTS OF INTEREST**  
**CAUTION**  
 POINT OF NO RETURN FOR ELECTRIC TRACTION  
 TO USE DOWN GOODS VIA 301 POINTS AT ENFIELD  
 SOUTH FOR TURN BACK MOVEMENTS ONLY  
 FREIGHT LINE IS NO LONGER CONNECTED TO  
 BANKSTOWN LINE AT CAMPSIE ELECTRIC  
 OVERHEAD AVAILABLE ON DOWN GOODS IN  
 THE UP DIRECTION TO SIGNAL SM 230 U AT  
 12.762 KM NOW A FIXED RED SIGNAL

**PONR**  
 POINTS OF NO RETURN

| SIGNAL No. | LOCATION                    | DESTINATIONS          |
|------------|-----------------------------|-----------------------|
| ED 103 D   | DOWN GOODS AT 13.529 KM     | ENFIELD YARD OR DELEC |
| ED 107     | UP GOODS AT 13.730 KM       | ENFIELD YARD OR DELEC |
| ED 111     | THROUGH ROAD 2 AT 13.908 KM | ENFIELD YARD OR DELEC |



DELEC DEPARTURE ROAD (ON LEFT) TO GOODS LINE SIGNAL ED 116



POINT INDICATOR WITH ILLUMINATED ARROW

SECTION : ENFIELD YARD SOUTHERN END  
 MAP SET : MEEKS ROAD TO FLEMINGTON  
 VIA THE GOODS ROAD  
 PAGE : 3 OF 4  
 UPDATED TO : 30 September 2024

INFORMATION

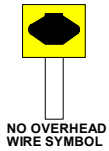
FREIGHT LINE CONTROLLED FROM  
 JUNEE NCCS " SYDNEY 2" BOARD  
 PHONE No. 02 6924 9804  
**EMERGENCY PHONE No. 02 6924 9864**  
 RADIO AREA CODE :  
 NATIONAL TRAIN COMMUNICATION SYSTEM (NTCS)  
 RADIO AREA CODE : 038 ( STRATHFIELD )  
 : 895 ( ENFIELD )  
 YARD WORKING : TWO WAY RADIO ONLY

GRADIENT

1 IN 168

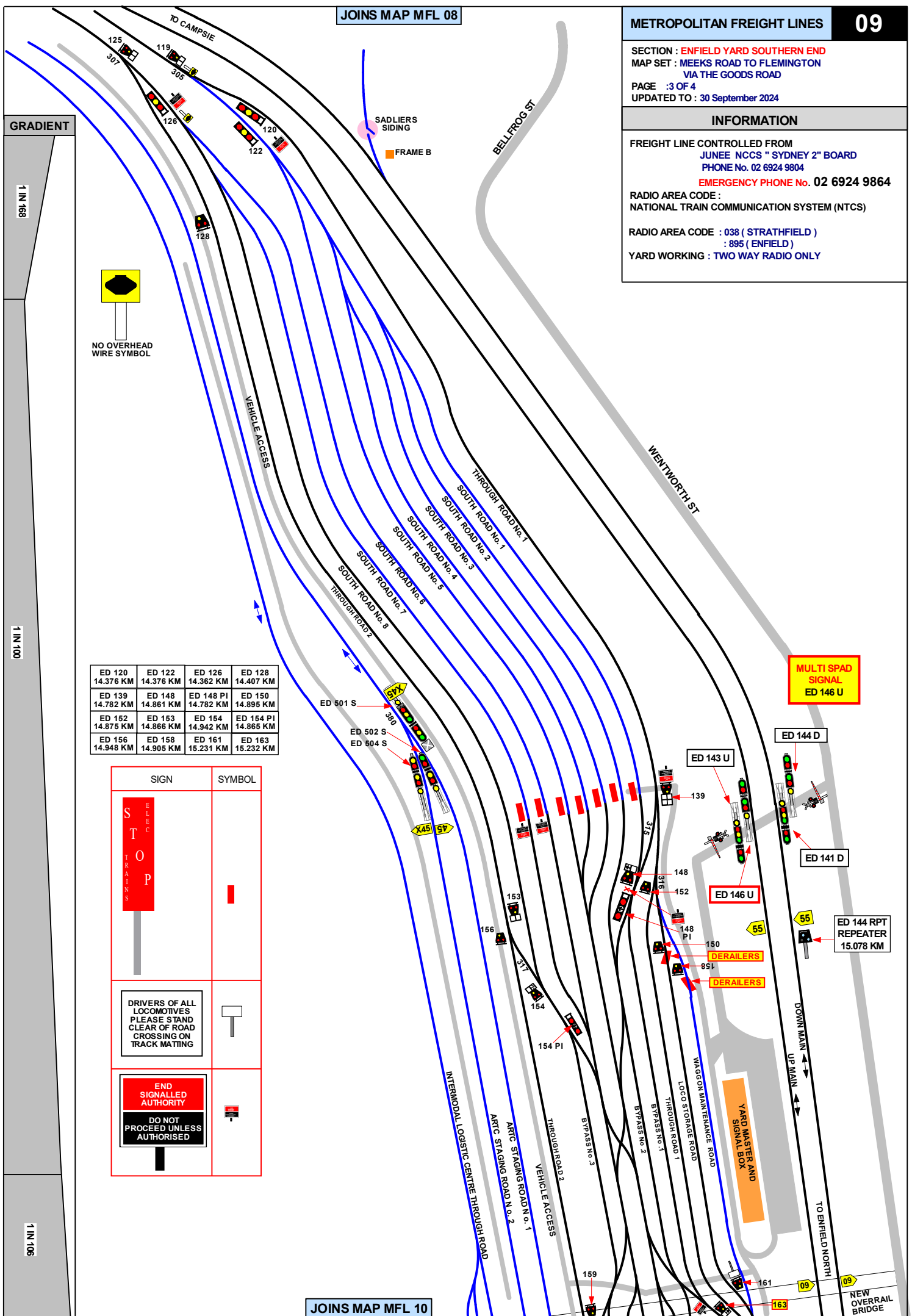
1 IN 100

1 IN 106



|                     |                     |                        |                        |
|---------------------|---------------------|------------------------|------------------------|
| ED 120<br>14.376 KM | ED 122<br>14.376 KM | ED 126<br>14.362 KM    | ED 128<br>14.407 KM    |
| ED 139<br>14.782 KM | ED 148<br>14.861 KM | ED 148 PI<br>14.782 KM | ED 150<br>14.895 KM    |
| ED 152<br>14.875 KM | ED 153<br>14.866 KM | ED 154<br>14.942 KM    | ED 154 PI<br>14.865 KM |
| ED 156<br>14.948 KM | ED 158<br>14.905 KM | ED 161<br>15.231 KM    | ED 163<br>15.232 KM    |

| SIGN | SYMBOL |
|------|--------|
|      |        |
|      |        |
|      |        |



SECTION : ENFIELD YARD SOUTHERN END  
 MAP SET : MEEKS ROAD TO FLEMINGTON  
 VIA THE GOODS ROAD

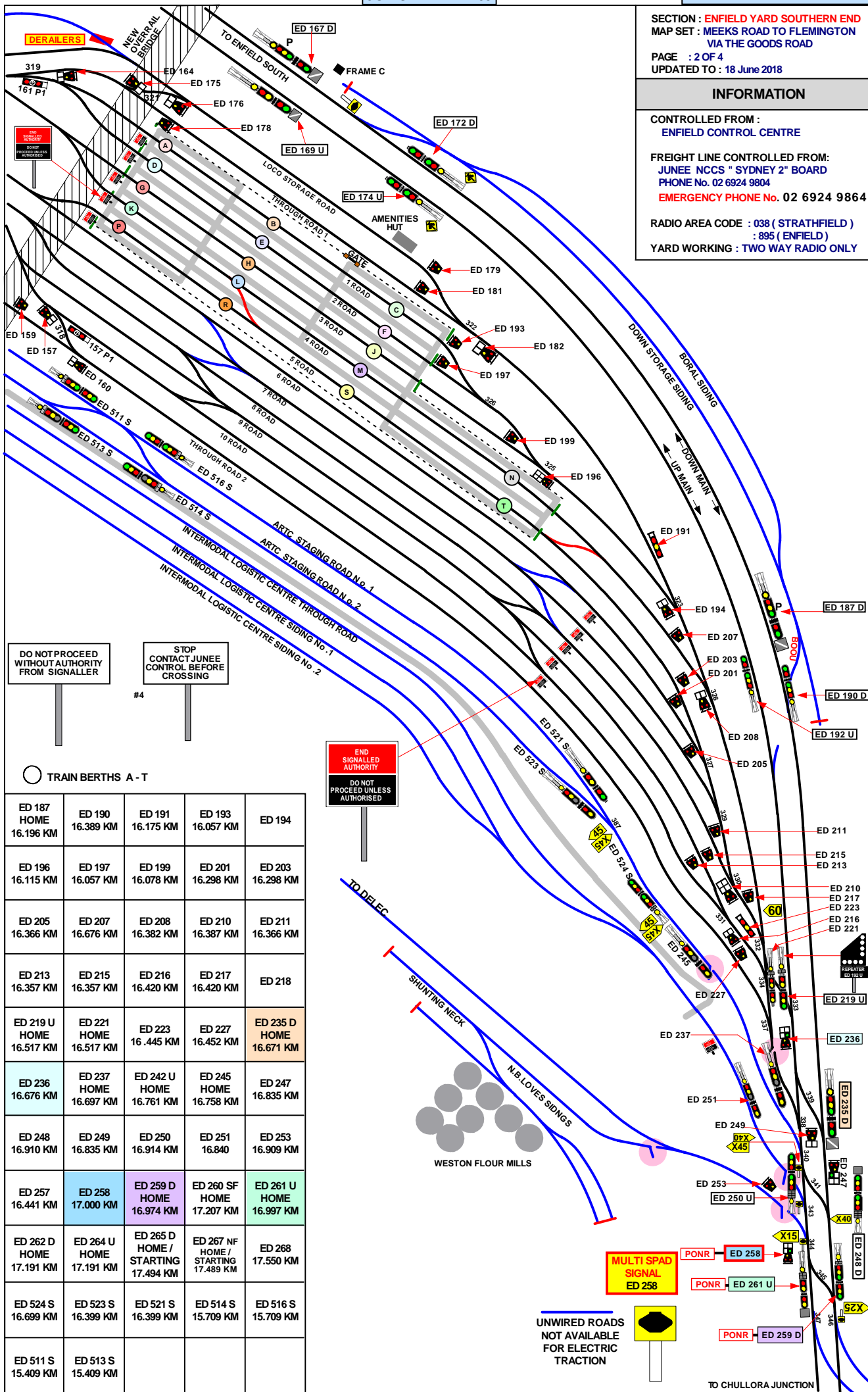
PAGE : 2 OF 4  
 UPDATED TO : 18 June 2018

INFORMATION

CONTROLLED FROM :  
 ENFIELD CONTROL CENTRE

FREIGHT LINE CONTROLLED FROM:  
 JUNEE NCCS "SYDNEY 2" BOARD  
 PHONE No. 02 6924 9804  
 EMERGENCY PHONE No. 02 6924 9864

RADIO AREA CODE : 038 ( STRATHFIELD )  
 : 895 ( ENFIELD )  
 YARD WORKING : TWO WAY RADIO ONLY



DO NOT PROCEED WITHOUT AUTHORITY FROM SIGNALLER

STOP CONTACT JUNEE CONTROL BEFORE CROSSING

END SIGNALLED AUTHORITY  
 DO NOT PROCEED UNLESS AUTHORISED

○ TRAIN BERTHS A - T

|                            |                            |                                       |                                        |                            |
|----------------------------|----------------------------|---------------------------------------|----------------------------------------|----------------------------|
| ED 187 HOME<br>16.196 KM   | ED 190<br>16.389 KM        | ED 191<br>16.175 KM                   | ED 193<br>16.057 KM                    | ED 194                     |
| ED 196<br>16.115 KM        | ED 197<br>16.057 KM        | ED 199<br>16.078 KM                   | ED 201<br>16.298 KM                    | ED 203<br>16.298 KM        |
| ED 205<br>16.366 KM        | ED 207<br>16.676 KM        | ED 208<br>16.382 KM                   | ED 210<br>16.387 KM                    | ED 211<br>16.366 KM        |
| ED 213<br>16.357 KM        | ED 215<br>16.357 KM        | ED 216<br>16.420 KM                   | ED 217<br>16.420 KM                    | ED 218                     |
| ED 219 U HOME<br>16.517 KM | ED 221 HOME<br>16.517 KM   | ED 223<br>16.445 KM                   | ED 227<br>16.452 KM                    | ED 235 D HOME<br>16.671 KM |
| ED 236<br>16.676 KM        | ED 237 HOME<br>16.697 KM   | ED 242 U HOME<br>16.761 KM            | ED 245 HOME<br>16.758 KM               | ED 247<br>16.835 KM        |
| ED 248<br>16.910 KM        | ED 249<br>16.835 KM        | ED 250<br>16.914 KM                   | ED 251<br>16.840                       | ED 253<br>16.909 KM        |
| ED 257<br>16.441 KM        | ED 258<br>17.000 KM        | ED 259 D HOME<br>16.974 KM            | ED 260 SF HOME<br>17.207 KM            | ED 261 U HOME<br>16.997 KM |
| ED 262 D HOME<br>17.191 KM | ED 264 U HOME<br>17.191 KM | ED 265 D HOME / STARTING<br>17.494 KM | ED 267 NF HOME / STARTING<br>17.489 KM | ED 268<br>17.550 KM        |
| ED 524 S<br>16.699 KM      | ED 523 S<br>16.399 KM      | ED 521 S<br>16.399 KM                 | ED 514 S<br>15.709 KM                  | ED 516 S<br>15.709 KM      |
| ED 511 S<br>15.409 KM      | ED 513 S<br>15.409 KM      |                                       |                                        |                            |

MULTI SPAD SIGNAL  
 ED 258

PONR ED 258

PONR ED 261 U

PONR ED 259 D

UNWIRED ROADS NOT AVAILABLE FOR ELECTRIC TRACTION

GRADIENT

1 IN 100

LEVEL

1 IN 100

| PONR<br>POINTS OF NO RETURN |                                            |                                                                                                        |
|-----------------------------|--------------------------------------------|--------------------------------------------------------------------------------------------------------|
| SIGNAL No.                  | LOCATION                                   | DESTINATIONS                                                                                           |
| ED 236                      | UP MAIN AT 16.676 KM                       | ENFIELD YARD                                                                                           |
| ED 238                      | DOWN MAIN AT 16.750 KM                     | ENFIELD YARD                                                                                           |
| ED 259 D                    | DOWN MAIN AT 16.974 KM NEAR SOUTH JUNCTION | SEFTON PARK JUNCTION OR<br>CHULLORA SIDINGS OR<br>LIDCOMBE OR<br>OLYMPIC PARK OR<br>FLEMINGTON MARKETS |
| ED 258                      | UP MAIN AT 17.000 KM NEAR SOUTH JUNCTION   | WESTON FLOUR MILLS SIDING OR<br>ENFIELD YARD                                                           |
| ED 261 U                    | UP MAIN AT 16.997 KM NEAR SOUTH JUNCTION   | SEFTON PARK JUNCTION OR<br>CHULLORA SIDINGS OR<br>LIDCOMBE OR<br>OLYMPIC PARK OR<br>FLEMINGTON MARKETS |
| ED 262 U                    | DOWN MAIN AT 17.191 KM AT SOUTH JUNCTION   | WESTON FLOUR MILLS SIDING                                                                              |
| ED 268                      | UP MAIN AT 17.550 KM AT NORTH JUNCTION     | ENFIELD YARD<br>WESTON MILLS SIDING OR<br>CHULLORA SIDINGS OR<br>SEFTON PARK JUNCTION                  |

| SIGNAL | DESTINATION        | INDICATION |
|--------|--------------------|------------|
| ED 182 | THROUGH ROAD (S)   | T1         |
|        | LOCO STORAGE ( S ) | LS         |

| SIGNAL | DESTINATION     | INDICATION |
|--------|-----------------|------------|
| ED 185 | SHUNTING NECK   | ←          |
|        | DOWN MAIN ( S ) | DM         |

| SIGNAL   | DESTINATION       | INDICATION |
|----------|-------------------|------------|
| ED 190 D | DOWN MAIN (M)     | ---        |
|          | DOWN MAIN (S)     | DM         |
|          | BORAL SIDING (4D) | BS         |

| SIGNAL | DESTINATION          | INDICATION |
|--------|----------------------|------------|
| ED 194 | ROAD 3 ( S )         | 3          |
|        | THROUGH ROAD 1 ( S ) | T1         |

| SIGNAL | DESTINATION | INDICATION |
|--------|-------------|------------|
| ED 196 | ROAD 3 (S)  | 3          |
|        | ROAD 2 (S)  | 2          |
|        | ROAD 1 (S)  | 1          |

| SIGNAL | DESTINATION          | INDICATION |
|--------|----------------------|------------|
| ED 208 | ROAD 4 ( S )         | 4          |
|        | THROUGH ROAD 1 ( S ) | T1         |

| SIGNAL | DESTINATION | INDICATION |
|--------|-------------|------------|
| ED 210 | ROAD 8 (S)  | 8          |
|        | ROAD 7 (S)  | 7          |
|        | ROAD 6 (S)  | 6          |
|        | ROAD 5 (S)  | 5          |

| SIGNAL | DESTINATION   | INDICATION |
|--------|---------------|------------|
| ED 216 | ROAD 10 ( S ) | 10         |
|        | ROAD 9 ( S )  | 9          |

| SIGNAL | DESTINATION          | INDICATION |
|--------|----------------------|------------|
| ED 218 | ROAD 5 ( S )         | 5          |
|        | THROUGH ROAD 1 ( S ) | T1         |

| SIGNAL | DESTINATION   | INDICATION |
|--------|---------------|------------|
| ED 219 | DOWN MAIN (M) | ---        |
|        | DOWN MAIN (S) | DM         |
|        | UP MAIN (M)   | ---        |
|        | UP MAIN (S)   | UM         |

| SIGNAL | DESTINATION      | INDICATION |
|--------|------------------|------------|
| ED 221 | DOWN MAIN (M)    | ---        |
|        | DOWN MAIN (S)    | DM         |
|        | THROUGH ROAD (S) | T1         |

| SIGNAL | DESTINATION      | INDICATION  |
|--------|------------------|-------------|
| ED 236 | THROUGH ROAD (S) | T1          |
|        | UP MAIN (S)      | GREEN LIGHT |
|        | UP MAIN (S)      | UM          |

| SIGNAL | DESTINATION   | INDICATION |
|--------|---------------|------------|
| ED 237 | DOWN MAIN (M) | ---        |
|        | UP MAIN (S)   | ---        |

| SIGNAL | DESTINATION   | INDICATION |
|--------|---------------|------------|
| ED 245 | DOWN MAIN (M) | ---        |
|        | UP MAIN (M)   | ---        |

| SIGNAL        | DESTINATION                 | INDICATION |
|---------------|-----------------------------|------------|
| ED 248 D      | STAGING ROAD 1 (M)          | S          |
|               | STAGING ROAD 1 (S)          | S1         |
|               | THROUGH ROAD 2 (S)          | T2         |
|               | ROAD 9 (S)                  | 9          |
|               | THROUGH ROAD 1 (S)          | T1         |
|               | UP MAIN (VIA 341 PTS R) (S) | U          |
|               | UP MAIN (VIA 341 PTS R) (S) | UM         |
|               | UP MAIN (VIA 339 PTS R) (S) | U          |
|               | UP MAIN (VIA 339 PTS R) (S) | UM         |
|               | DOWN MAIN (M)               | D          |
| DOWN MAIN (S) | DM                          |            |

| SIGNAL | DESTINATION   | INDICATION |
|--------|---------------|------------|
| ED 249 | DOWN MAIN (S) | DM         |
|        | UP MAIN (S)   | UP         |

| SIGNAL      | DESTINATION        | INDICATION |
|-------------|--------------------|------------|
| ED 250 U    | ILC (S)            | LC         |
|             | STAGING ROAD 1 (M) | S          |
|             | STAGING ROAD 1 (S) | S1         |
|             | THROUGH ROAD 2 (S) | T2         |
|             | ROAD 9 (S)         | 9          |
|             | THROUGH ROAD 1 (S) | T1         |
|             | UP MAIN (M)        | U          |
| UP MAIN (S) | UM                 |            |

| SIGNAL | DESTINATION | INDICATION |
|--------|-------------|------------|
| ED 251 | UP MAIN (M) | ---        |
|        | UP MAIN (S) | ---        |

| SIGNAL | DESTINATION | INDICATION  |
|--------|-------------|-------------|
| ED 258 | DELEC (S)   | DC          |
|        | UP MAIN (S) | UM          |
|        | UP MAIN (S) | GREEN LIGHT |

| SIGNAL   | DESTINATION         | INDICATION |
|----------|---------------------|------------|
| ED 259 D | DOWN SOUTH FORK (M) | ---        |
|          | DOWN SOUTH FORK (S) | SF         |
|          | DOWN MAIN (M)       | ---        |
|          | DOWN MAIN (S)       | DM         |

| SIGNAL      | DESTINATION         | INDICATION |
|-------------|---------------------|------------|
| ED 261 U    | DOWN SOUTH FORK (M) | S          |
|             | DOWN SOUTH FORK (S) | SF         |
|             | DOWN MAIN (M)       | M          |
|             | DOWN MAIN (S)       | DM         |
| UP MAIN (S) | UM                  |            |

| SIGNAL   | DESTINATION   | INDICATION |
|----------|---------------|------------|
| ED 262 D | UP MAIN (S)   | UM         |
|          | DOWN MAIN (M) | -          |
|          | DOWN MAIN (S) | DM         |

SECTION : ENFIELD TO CHULLORA NORTH JUNCTION

MAP SET : MEEKS ROAD TO FLEMINGTON JUNCTION

UPDATED TO : 18 June 2018

**INFORMATION**

FREIGHT LINE CONTROLLED FROM  
JUNEE NCCS " SYDNEY 2" BOARD  
PHONE No. 02 6924 9804  
**EMERGENCY PHONE No. 02 6924 9863**

RADIO AREA CODE :  
NATIONAL TRAIN COMMUNICATION SYSTEM (NTCS)

RADIO AREA CODE : 038 ( STRATHFIELD )  
: 895 ( ENFIELD )

YARD WORKING : TWO WAY RADIO ONLY

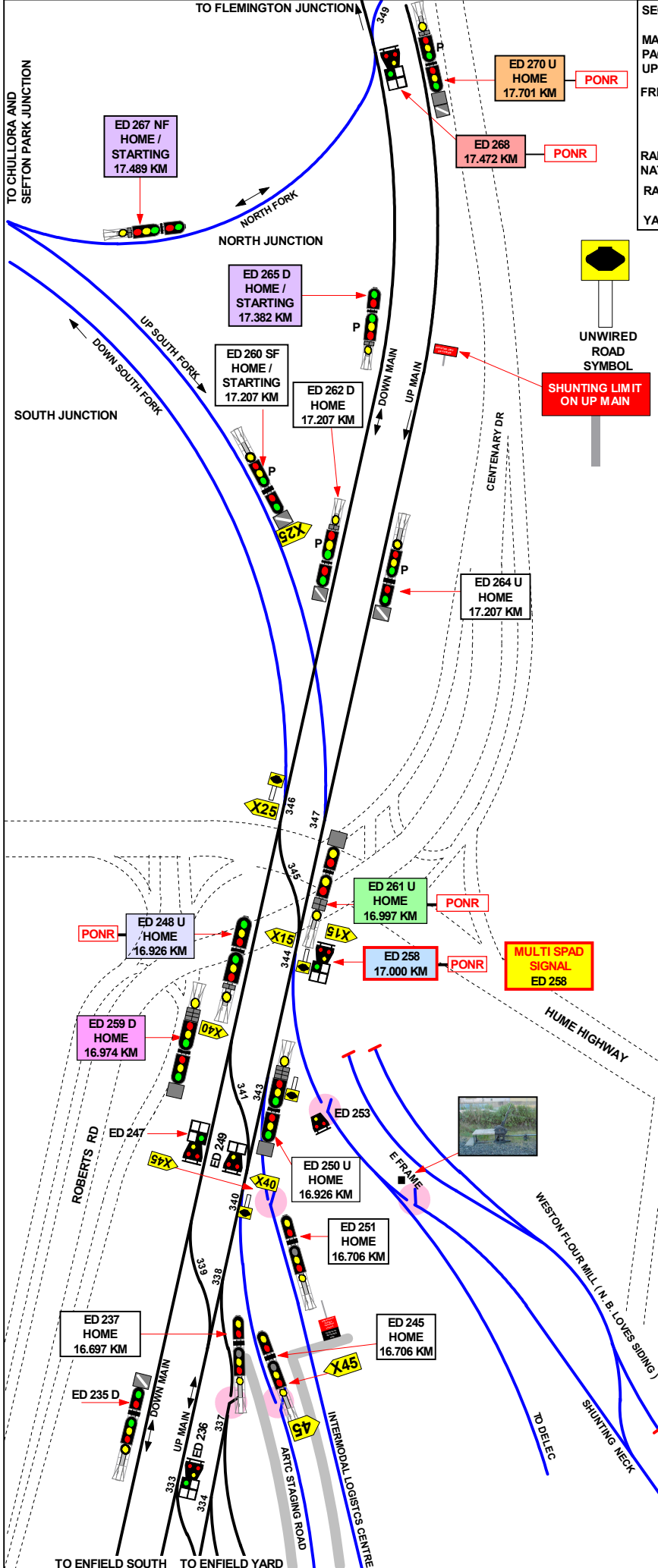
SECTION : DELEC ENFIELD LOCOMOTIVE DEPOT AND CHULLORA JUNCTION

MAP SET : YARDS  
PAGE: 2 OF 5  
UPDATED TO : 3 October 2023

FREIGHT LINE CONTROLLED FROM  
JUNEE NCCS " SYDNEY 2" BOARD  
PHONE No. 02 6924 9804  
EMERGENCY PHONE No. 02 6924 9863

RADIO AREA CODE :  
NATIONAL TRAIN COMMUNICATION SYSTEM (NTCS)  
RADIO AREA CODE : 038 ( STRATHFIELD )  
: 895 ( ENFIELD )  
YARD WORKING : TWO WAY RADIO ONLY

GRADIENT



UNWIRED ROAD SYMBOL

SHUNTING LIMIT ON UP MAIN

MULTI SPAD SIGNAL ED 258

| SIGNAL   | DESTINATION    | INDICATION |  |
|----------|----------------|------------|--|
| ED 270 U | UP MAIN (M)    |            |  |
|          | UP MAIN (S)    | UM         |  |
|          | DOWN MAIN (M)  | D          |  |
|          | DOWN MAIN (S)  | DM         |  |
|          | NORTH FORK (S) | N          |  |

| SIGNAL | DESTINATION    | INDICATION |       |
|--------|----------------|------------|-------|
| ED 268 | DOWN MAIN (S)  | DM         |       |
|        | NORTH FORK (S) | NF         |       |
|        | DOWN MAIN (M)  | GREEN      | LIGHT |

| SIGNAL                | DESTINATION   | INDICATION |  |
|-----------------------|---------------|------------|--|
| ED 265 D<br>ED 267 NF | UP MAIN (M)   | ---        |  |
|                       | UP MAIN (S)   | UM         |  |
|                       | DOWN MAIN (M) | ---        |  |
|                       | DOWN MAIN (S) | DM         |  |

| SIGNAL                | DESTINATION | INDICATION |  |
|-----------------------|-------------|------------|--|
| ED 260 SF<br>ED 264 U | UP MAIN (M) | ---        |  |
|                       | UP MAIN (S) | ---        |  |

| SIGNAL   | DESTINATION         | INDICATION |  |
|----------|---------------------|------------|--|
| ED 261 U | DOWN SOUTH FORK (M) | S          |  |
|          | DOWN SOUTH FORK (S) | SF         |  |
|          | DOWN MAIN (M)       | M          |  |
|          | DOWN MAIN (S)       | DM         |  |
|          | UP MAIN (S)         | UM         |  |

| SIGNAL   | DESTINATION         | INDICATION |  |
|----------|---------------------|------------|--|
| ED 248 U | DOWN SOUTH FORK (M) | ---        |  |
|          | DOWN SOUTH FORK (S) | SF         |  |
|          | DOWN MAIN (M)       | ---        |  |
|          | DOWN MAIN (S)       | DM         |  |

| SIGNAL | DESTINATION | INDICATION |       |
|--------|-------------|------------|-------|
| ED 258 | DELEC (S)   | DC         |       |
|        | UP MAIN (S) | UM         |       |
|        | UP MAIN (S) | GREEN      | LIGHT |

| SIGNAL | DESTINATION | INDICATION |  |
|--------|-------------|------------|--|
| ED 251 | UP MAIN (M) | ---        |  |
|        | UP MAIN (S) | ---        |  |

| SIGNAL      | DESTINATION        | INDICATION |  |
|-------------|--------------------|------------|--|
| ED 250 U    | ILC (S)            | LC         |  |
|             | STAGING ROAD 1 (M) | S          |  |
|             | STAGING ROAD 1 (S) | S1         |  |
|             | THROUGH ROAD 2 (S) | T2         |  |
|             | ROAD 9 (S)         | 9          |  |
|             | THROUGH ROAD 1 (S) | T1         |  |
|             | UP MAIN (M)        | U          |  |
| UP MAIN (S) | UM                 |            |  |

| SIGNAL | DESTINATION   | INDICATION |  |
|--------|---------------|------------|--|
| ED 249 | DOWN MAIN (S) | DM         |  |
|        | UP MAIN (S)   | UP         |  |

| SIGNAL        | DESTINATION                 | INDICATION |  |
|---------------|-----------------------------|------------|--|
| ED 259 D      | STAGING ROAD 1 (M)          | S          |  |
|               | STAGING ROAD 1 (S)          | S1         |  |
|               | THROUGH ROAD 2 (S)          | T2         |  |
|               | ROAD 9 (S)                  | 9          |  |
|               | THROUGH ROAD 1 (S)          | T1         |  |
|               | UP MAIN (VIA 341 PTS R) (S) | U          |  |
|               | UP MAIN (VIA 341 PTS R) (S) | UM         |  |
|               | UP MAIN (VIA 339 PTS R) (S) | U          |  |
|               | UP MAIN (VIA 339 PTS R) (S) | UM         |  |
|               | DOWN MAIN (M)               | D          |  |
| DOWN MAIN (S) | DM                          |            |  |

1 IN 100



JOINS MAP MFL 11

ED 264 U HOME 17.207 KM  
 ED 262 D HOME 17.207 KM  
 ED 268 17.472 KM  
 ED 270 U HOME 17.701 KM  
 ED 265 D HOME / STARTING 17.382 KM

SECTION : CHULLORA NORTH JUNCTION TO FLEMINGTON SOUTH JUNCTION  
 MAP SET : MEEKS ROAD TO FLEMINGTON JUNCTION  
 UPDATED TO : 5 May 2024

INFORMATION

FREIGHT LINE CONTROLLED FROM JUNEЕ NCCS " SYDNEY 2" BOARD  
 PHONE No. 02 6924 9804  
**EMERGENCY PHONE No. 02 6924 9863**  
 RADIO AREA CODE : NATIONAL TRAIN COMMUNICATION SYSTEM (NTCS)  
 RADIO AREA CODE : 038 ( LIDCOMBE ) : 895 ( ENFIELD )

PONR

POINTS OF NO RETURN

| SIGNAL No. | LOCATION                | DESTINATIONS                                            |
|------------|-------------------------|---------------------------------------------------------|
| ED 268     | CHULLORA NORTH JUNCTION | TURN OUT FOR DOWN GOODS                                 |
| ED 270 U   | CHULLORA NORTH JUNCTION | TURN OUT FOR DOWN GOODS                                 |
| ST 371 SJD | DOWN MAIN 19.807 KM     | LIDCOMBE OR UP OR DOWN FLEMINGTON GOODS OR OLYMPIC PARK |

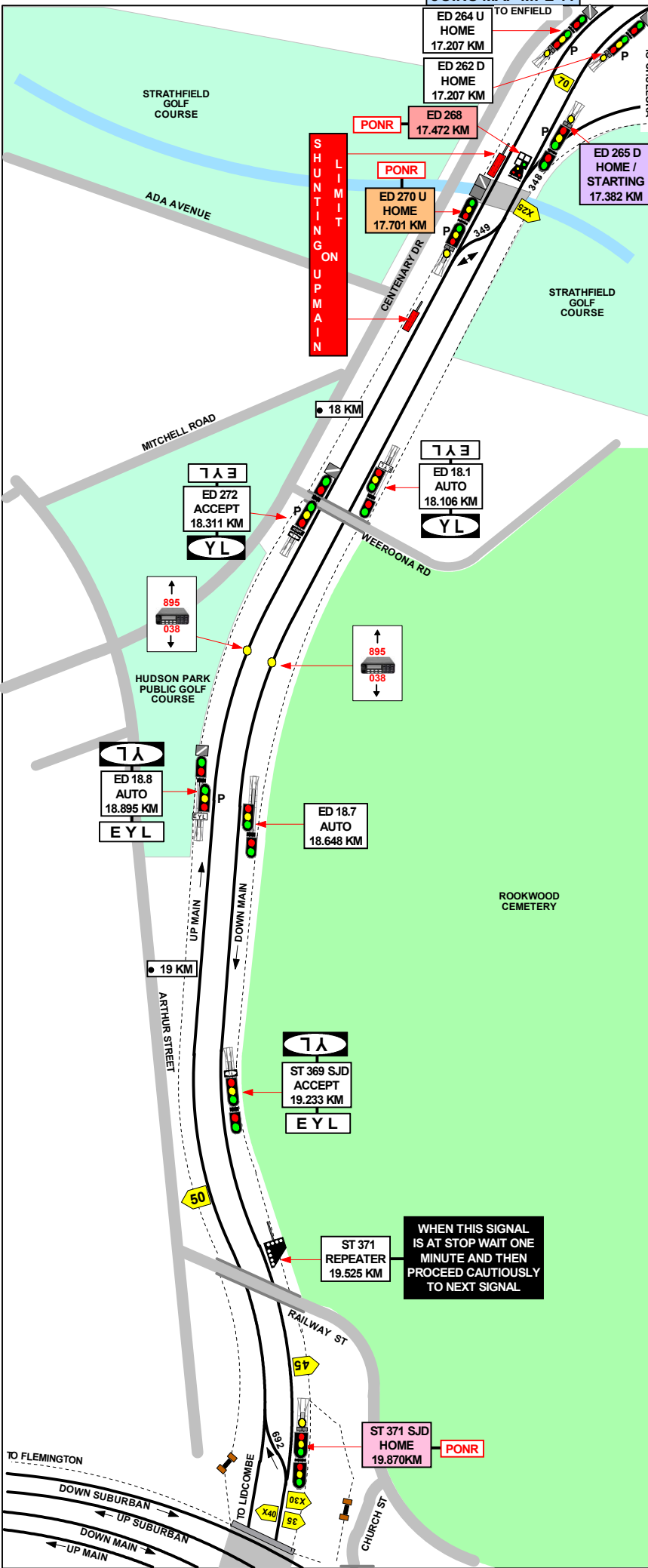
| SIGNAL   | DESTINATION   | INDICATION |  |
|----------|---------------|------------|--|
| ED 262 D | UP MAIN (S)   | UM         |  |
|          | DOWN MAIN (M) | -          |  |
|          | DOWN MAIN (S) | DM         |  |

| SIGNAL                | DESTINATION   | INDICATION |  |
|-----------------------|---------------|------------|--|
| ED 265 D<br>ED 267 NF | UP MAIN (M)   | ---        |  |
|                       | UP MAIN (S)   | UM         |  |
|                       | DOWN MAIN (M) | ---        |  |
|                       | DOWN MAIN (S) | DM         |  |

| SIGNAL | DESTINATION    | INDICATION |       |
|--------|----------------|------------|-------|
| ED 268 | DOWN MAIN (S)  | DM         |       |
|        | NORTH FORK (S) | NF         |       |
|        | DOWN MAIN (M)  | GREEN      | LIGHT |

| SIGNAL   | DESTINATION    | INDICATION |  |
|----------|----------------|------------|--|
| ED 270 U | UP MAIN (M)    |            |  |
|          | UP MAIN (S)    | UM         |  |
|          | DOWN MAIN (M)  | D          |  |
|          | DOWN MAIN (S)  | DM         |  |
|          | NORTH FORK (S) | N          |  |

| SIGNAL     | DESTINATION                | INDICATION |  |
|------------|----------------------------|------------|--|
| ST 371 SJD | DOWN ENFIELD WEST FORK (M) | -          |  |
|            | DOWN ENFIELD WEST FORK (S) | WF         |  |
|            | DOWN ENFIELD EAST FORK (M) | -          |  |
|            | DOWN ENFIELD EAST FORK (S) | EF         |  |



JOINS MAP MS 14

1 IN 100

1 IN 100

1 IN 100