

# DRIVERS ROUTE KNOWLEDGE DIAGRAMS

## FREIGHT LINES

MEEKS ROAD

MARRICKVILLE

DULWICH HILL

HURLSTONE PARK

CANTERBURY

CAMPSIE

CAMPSIE TO  
ENFIELD YARD SOUTH

ENFIELD YARD SOUTH

ENFIELD YARD NORTH

CHULLORA JUNCTION

FLEMINGTON JUNCTION

**Effective Date:** May 2024

**Version:** 4.33

### Explanatory Notes:

Navigate to your area of interest via the station index or by using links created in Adobe bookmarks.

This document is approved for **route knowledge only**.

**Do not use these diagrams for any safety related purpose** without validating the information against a controlled source or in the field.

Information in these diagrams is uncontrolled.

Please report any updates to  
[gis.support@transport.nsw.gov.au](mailto:gis.support@transport.nsw.gov.au)



**Copyright:** Sydney Trains

**Ownership:** Geospatial Services

**Location:** TRIM Record No.D2015/562



SECTION : **TEMPE TO MEEKS ROAD**  
 MAP SET : MEEKS ROAD TO FLEMINGTON JUNCTION  
 PAGE : 2 OF 2  
 UPDATED TO : 31 October 2023

FREIGHT LINE CONTROLLED FROM  
 JUNEE NCCS " SYDNEY 1" BOARD  
 PHONE No. 02 6924 9806  
 EMERGENCY PHONE No. 02 6924 9866  
 RADIO AREA CODE :  
 NATIONAL TRAIN COMMUNICATION SYSTEM (NTCS)

SUBURBAN LINES  
 CONTROLLED FROM : RAIL OPERATIONS CENTRE  
 RADIO AREA CODE : 004 (SYDENHAM)  
 005 (SYDENHAM)

PROPELLING MOVEMENTS	
FROM	TO
CLEAR OF No. 775 CROSSOVER	CLEAR OF No. 770 CROSSOVER
CLEAR OF No. 770 CROSSOVER	CLEAR OF No. 775 CROSSOVER

THESE PROPELLING MOVEMENTS ARE FOR NON-ELECTRIC ROLLING STOCK ONLY AND MUST BE CARRIED OUT AS SHOWN IN THE INSTRUCTIONS IN NTR 424 / OSP 15 IN THE NETWORK RULES AND OPERATORS SPECIFIC PROCEDURES MANUALS

PONR POINT OF NO RETURN		
SIGNAL No.	LOCATION	DESTINATION
SM 621 I	APPROX. 250 METRES COUNTRY SIDE OF No. 6 PLATFORM SYDENHAM ( DOWN ILLAWARRA )	EAST HILLS LINE
SM 639 IL	APPROX. 1 KILOMETRE COUNTRY SIDE OF No. 4 PLATFORM SYDENHAM ( DOWN ILLAWARRA LOCAL )	WOLLI CREEK STATION
SM 675 B	DOWN BANKSTOWN LINE AT 5.643 KM	GOODS LINE
SM 648 IL	SYDNEY END OF No. 1 PLATFORM TEMPE	GOODS LINE
SM 650 I	SYDNEY END OF No. 3 PLATFORM TEMPE	GOODS LINE

SIGNAL	DESTINATION	INDICATION
SM 648 IL	UP GOODS (M)	-
	UP GOODS (S)	G
	UP ILLAWARRA LOCAL (M)	-
	UP ILLAWARRA LOCAL (S)	IL

SIGNAL	DESTINATION	INDICATION
SM 650 I	UP GOODS (M)	G
	UP GOODS (S)	G
	UP ILLAWARRA LOCAL (M)	IL
	UP ILLAWARRA LOCAL (S)	IL
	UP ILLAWARRA (M)	-
UP ILLAWARRA (S)	I	

SIGNAL	DESTINATION	INDICATION
SM 675 B	DOWN GOODS (M)	-
	DOWN GOODS (S)	G
	DOWN BANKSTOWN (M)	-
	DOWN BANKSTOWN (S)	B

SIGNAL	DESTINATION	INDICATION
SM 676	UP ILLAWARRA LOCAL (S)	-
	UP ILLAWARRA LOCAL (M)	U
	DOWN ILLAWARRA LOCAL (M)	D

SIGNAL	DESTINATION	INDICATION
SM 681 G	DOWN EAST FORK (M)	-
	DOWN EAST FORK (S)	EF
	DOWN NORTH FORK (M)	-
	DOWN NORTH FORK (S)	NF

SIGNAL	DESTINATION	INDICATION
SM 684	GOODS LINE	G
	NORTH SHUNTING NECK	N

SIGNAL	DESTINATION	INDICATION
SM 693	UP GOODS	UG
	SIDING	S

SIGNAL	DESTINATION	INDICATION
SM 694 G	UP SHUNTING NECK (S)	SN
	UP SOUTH FORK (M)	-
	UP SOUTH FORK (S)	SF
	UP EAST FORK (M)	-
	UP EAST FORK (S)	EF

SIGNAL	DESTINATION	INDICATION
SM 698	UP GOODS	UG
	DOWN GOODS	DG

SYDENHAM TERMINATING TRAINS (UNDER NORMAL CONDITIONS)		
FROM	TERMINATE AT	THEN GO TO
UP BANKSTOWN	No. 3 PLATFORM	RETURN TO EITHER THE DOWN BANKSTOWN LINE, THE DOWN ILLAWARRA LOCAL LINE, THE XPT SIDINGS OR THE GOODS LINES
UP ILLAWARRA LINE	No. 3 PLATFORM	RETURN TO EITHER THE DOWN BANKSTOWN LINE, THE DOWN ILLAWARRA LOCAL LINE, THE XPT SIDINGS OR THE GOODS LINES.
	No. 4 PLATFORM	RETURN TO EITHER THE DOWN BANKSTOWN LINE, THE DOWN ILLAWARRA LOCAL LINE, THE XPT SIDINGS OR THE GOODS LINES.
DOWN TRAINS	<b>No. 4 PLATFORM - RETURN TO UP ILLAWARRA LOCAL VIA 735PTS</b>	
DOWN TRAINS AT TEMPE	DOWN ILLAWARRA TRAINS MAY TERMINATE BEHIND SIGNAL <b>SM 644</b> AND RETURN TO THE UP ILLAWARRA LOCAL LINE.	
UP TRAINS AT TEMPE	UP GOODS LINE AT SIGNAL No. SM 700	RETURN TO THE DOWN ILLAWARRA LOCAL OR DOWN ILLAWARRA LINE VIA No. 748 POINTS
	UP SOUTH FORK	RETURN TO THE DOWN GOODS LINE VIA No. 770 POINTS.

SELF-PROPELLED DIESEL TRAINS MAY TERMINATE ON		
FROM	TERMINATE AT	THEN GO TO
	DOWN EAST FORK	RETURN TO THE UP NORTH FORK VIA No. 762 POINTS.
	DOWN GOODS LINE	RETURN TO THE UP SOUTH FORK VIA No. 770 POINTS.
	DOWN ILLAWARRA LOCAL LINE AT SIGNAL No. SM 644	RETURN TO EITHER THE UP NORTH FORK VIA Nos. 775 AND 773 POINTS OR THE DOWN SOUTH FORK VIA No. 775 POINTS

SECTION : **MEEKS ROAD TO MARRICKVILLE**  
 MAP SET : MEEKS ROAD TO FLEMINGTON JUNCTION  
 UPDATED TO : 10 August 2020

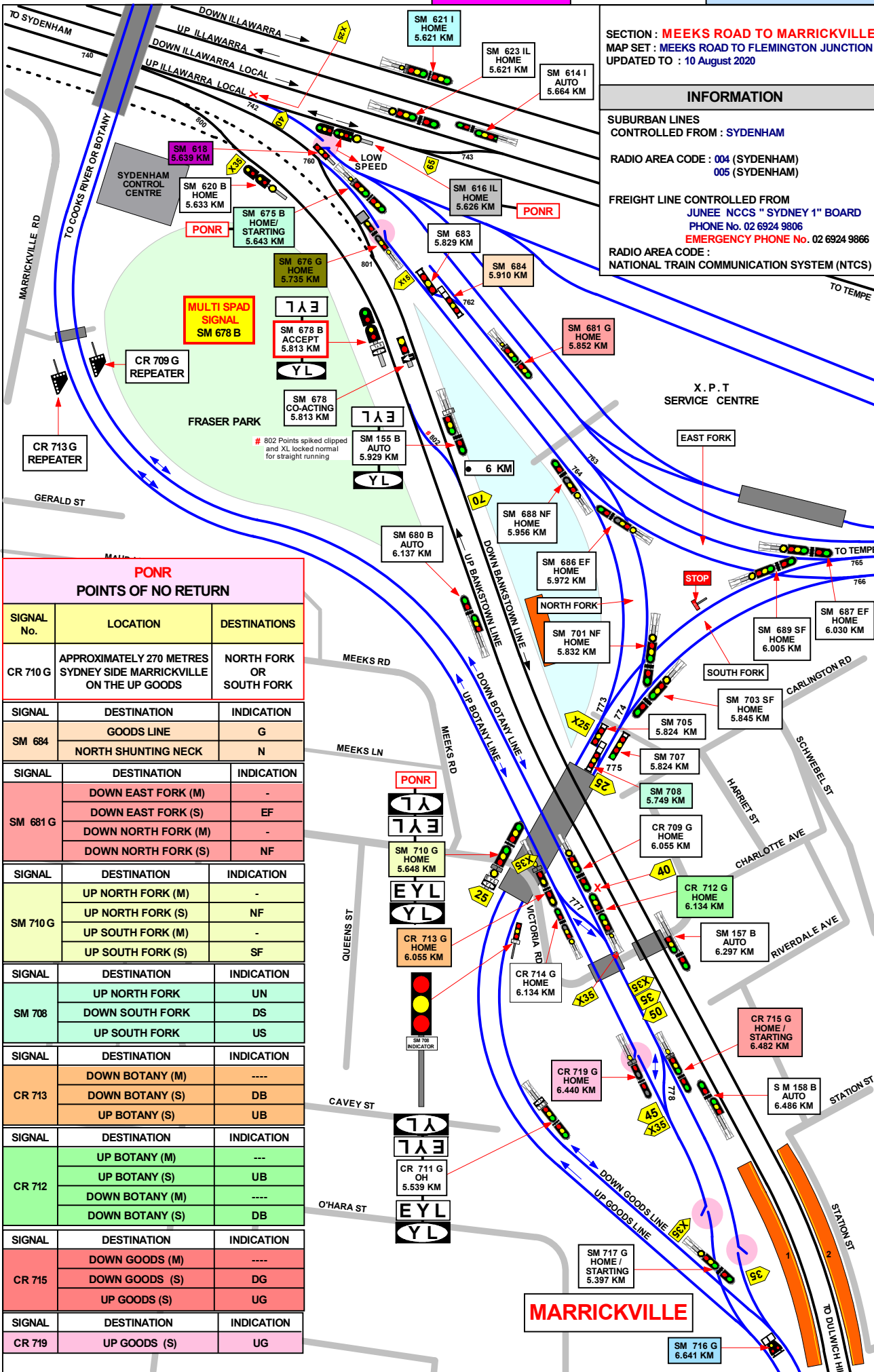
**INFORMATION**

SUBURBAN LINES  
 CONTROLLED FROM : SYDENHAM

RADIO AREA CODE : 004 (SYDENHAM)  
 005 (SYDENHAM)

FREIGHT LINE CONTROLLED FROM  
 JUNE E NCCS " SYDNEY 1" BOARD  
 PHONE No. 02 6924 9806  
**EMERGENCY PHONE No. 02 6924 9866**

RADIO AREA CODE :  
 NATIONAL TRAIN COMMUNICATION SYSTEM (NTCS)



**PONR  
 POINTS OF NO RETURN**

SIGNAL No.	LOCATION	DESTINATIONS
CR 710 G	APPROXIMATELY 270 METRES SYDNEY SIDE MARRICKVILLE ON THE UP GOODS	NORTH FORK OR SOUTH FORK
SIGNAL	DESTINATION	INDICATION
SM 684	GOODS LINE	G
	NORTH SHUNTING NECK	N
SIGNAL	DESTINATION	INDICATION
SM 681 G	DOWN EAST FORK (M)	-
	DOWN EAST FORK (S)	EF
	DOWN NORTH FORK (M)	-
	DOWN NORTH FORK (S)	NF
SIGNAL	DESTINATION	INDICATION
SM 710 G	UP NORTH FORK (M)	-
	UP NORTH FORK (S)	NF
	UP SOUTH FORK (M)	-
	UP SOUTH FORK (S)	SF
SIGNAL	DESTINATION	INDICATION
SM 708	UP NORTH FORK	UN
	DOWN SOUTH FORK	DS
	UP SOUTH FORK	US
SIGNAL	DESTINATION	INDICATION
CR 713	DOWN BOTANY (M)	----
	DOWN BOTANY (S)	DB
	UP BOTANY (S)	UB
SIGNAL	DESTINATION	INDICATION
CR 712	UP BOTANY (M)	---
	UP BOTANY (S)	UB
	DOWN BOTANY (M)	----
	DOWN BOTANY (S)	DB
SIGNAL	DESTINATION	INDICATION
CR 715	DOWN GOODS (M)	----
	DOWN GOODS (S)	DG
	UP GOODS (S)	UG
SIGNAL	DESTINATION	INDICATION
CR 719	UP GOODS (S)	UG

1 IN 100

1 IN 90

1 IN 100

1 IN 170

SIGNAL	DESTINATION	INDICATION
SM 713 G	DOWN BOTANY (M)	-
	DOWN BOTANY (S)	DB
	UP BOTANY (S)	UB

SIGNAL	DESTINATION	INDICATION
SM 716 G	DOWN GOODS (S)	DG
	DOWN BOTANY (S)	DB

SIGNAL	DESTINATION	INDICATION
SM 719 G	UP GOODS (S)	UG

SIGNAL	DESTINATION	INDICATION
SM 712 G	UP BOTANY (M)	-
	UP BOTANY (S)	UB
	DOWN BOTANY (M)	-
	DOWN BOTANY (S)	DB

SIGNAL	DESTINATION	INDICATION
SM 715 G	DOWN GOODS (M)	-
	DOWN GOODS (S)	DG
	UP GOODS (S)	UG

SUBURBAN LINES  
CONTROLLED FROM : SYDENHAM

RADIO AREA CODE : 005 (SYDENHAM)  
057 (SYDENHAM)

UPDATED : 20 JULY 2015

FREIGHT LINE CONTROLLED FROM  
JUNEE NCCS " SYDNEY 1" BOARD  
PHONE No. 02 6924 9806

EMERGENCY PHONE No. 02 6924 9866  
RADIO AREA CODE :  
NATIONAL TRAIN COMMUNICATION SYSTEM (NTCS)

**MARRICKVILLE**

SECTION : **MARRICKVILLE TO DULWICH HILL**  
MAP SET : MEEKS ROAD TO FLEMINGTON JUNCTION  
UPDATED TO : 13 October 2022

GRADIENT

**INFORMATION**

FREIGHT LINE CONTROLLED FROM  
JUNEE NCCS " SYDNEY 1" BOARD  
PHONE No. 02 6924 9806  
EMERGENCY PHONE No. 02 6924 9866

RADIO AREA CODE :  
NATIONAL TRAIN COMMUNICATION SYSTEM (NTCS)

SUBURBAN LINES  
CONTROLLED FROM : SYDENHAM

RADIO AREA CODE : 005 (SYDENHAM)  
057 (SYDENHAM)

**MARRICKVILLE**

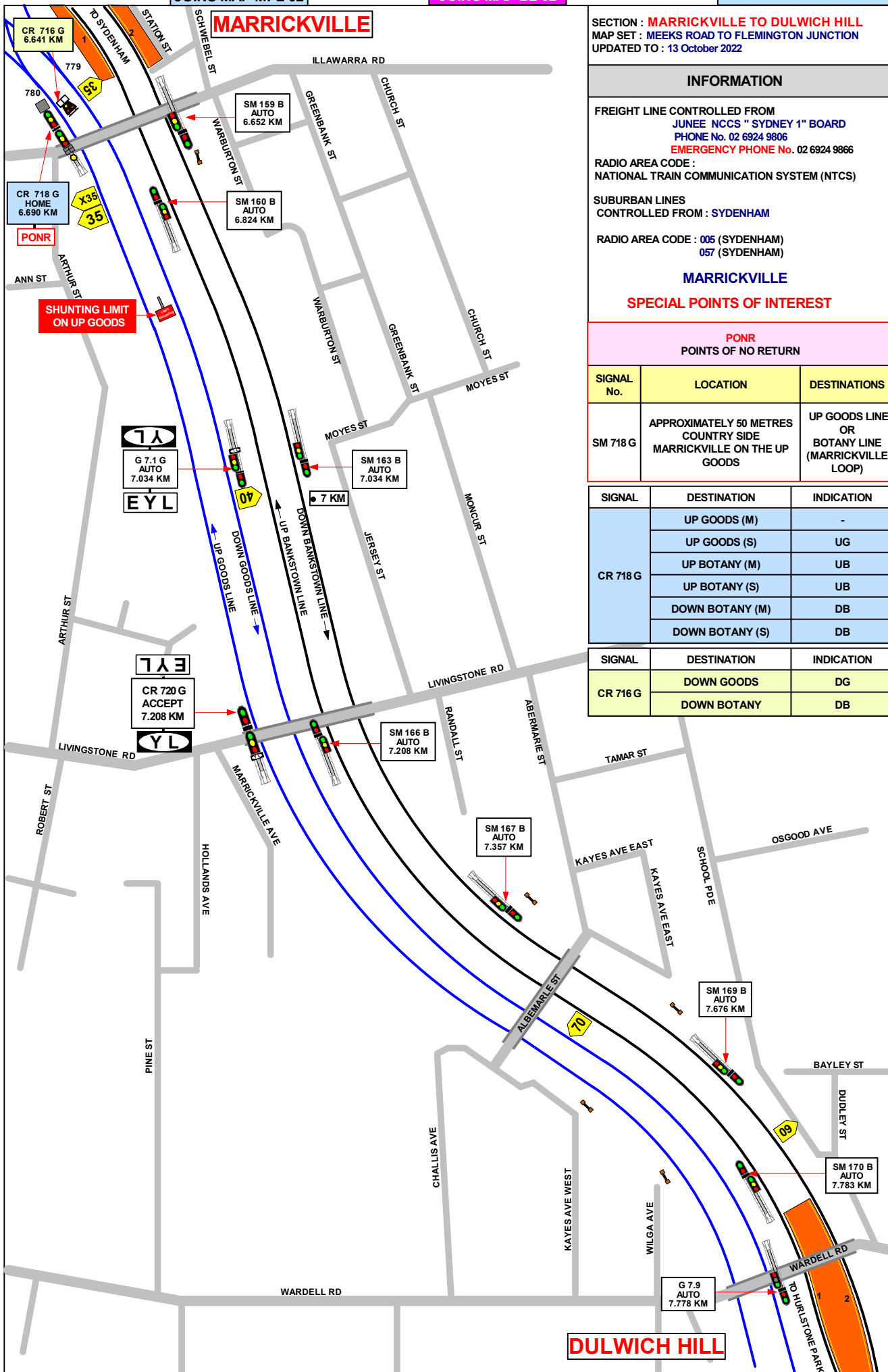
**SPECIAL POINTS OF INTEREST**

**PONR**  
POINTS OF NO RETURN

SIGNAL No.	LOCATION	DESTINATIONS
SM 718 G	APPROXIMATELY 50 METRES COUNTRY SIDE MARRICKVILLE ON THE UP GOODS	UP GOODS LINE OR BOTANY LINE (MARRICKVILLE LOOP)

SIGNAL	DESTINATION	INDICATION
CR 718 G	UP GOODS (M)	-
	UP GOODS (S)	UG
	UP BOTANY (M)	UB
	UP BOTANY (S)	UB
	DOWN BOTANY (M)	DB
CR 716 G	DOWN GOODS	DG
	DOWN BOTANY	DB

SIGNAL	DESTINATION	INDICATION
CR 716 G	DOWN GOODS	DG
	DOWN BOTANY	DB



**DULWICH HILL**

1 IN 170

1 IN 100

1 IN 110

1 IN 100

1 IN 110

1 IN 1000

LEVEL

DULWICH HILL

SECTION : CAMPSIE TO BELMORE  
MAP SET : MEEKS ROAD TO FLEMINGTON JUNCTION  
AMENDED TO : 17 March 2022

INFORMATION

FREIGHT LINE CONTROLLED FROM  
JUNEE NCCS " SYDNEY 1" BOARD  
PHONE No. 02 6924 9806  
EMERGENCY PHONE No. 02 6924 9866  
RADIO AREA CODE :  
NATIONAL TRAIN COMMUNICATION SYSTEM (NTCS)  
SUBURBAN LINES  
CONTROLLED FROM : SYDENHAM  
RADIO AREA CODE : 005 (SYDENHAM)  
057 (SYDENHAM)

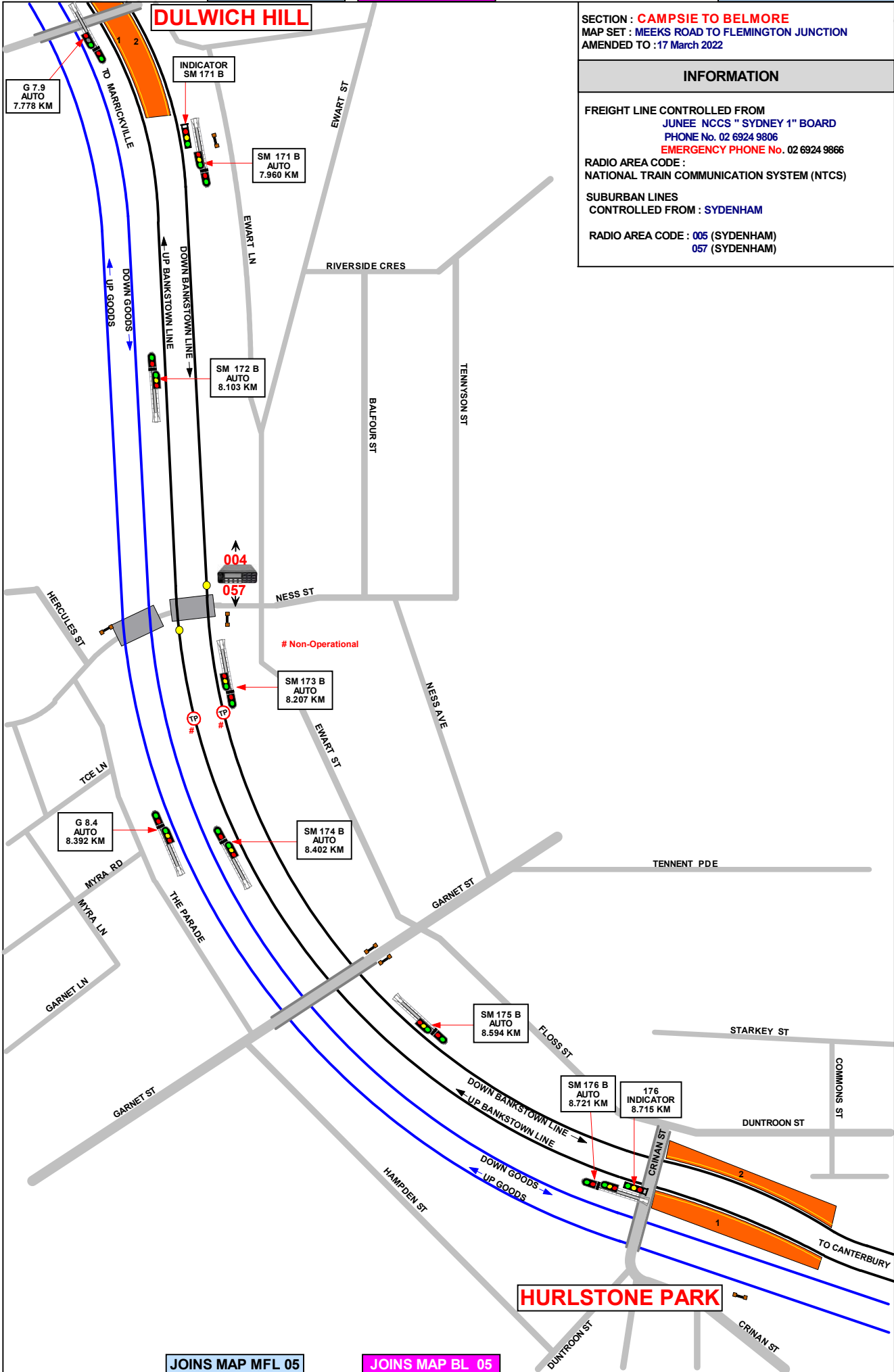
GRADIENT

LEVEL

1 IN 425

1 IN 440

1 IN 170



HURLSTONE PARK

**HURLSTONE PARK**

SECTION : **CAMPBIE TO BELMORE**  
MAP SET : MEEKS ROAD TO FLEMINGTON JUNCTION  
AMENDED TO : 31 May 2021

**INFORMATION**

FREIGHT LINE CONTROLLED FROM  
JUNEE NCCS " SYDNEY 1" BOARD  
PHONE No. 02 6924 9806  
EMERGENCY PHONE No. 02 6924 9866  
RADIO AREA CODE :  
NATIONAL TRAIN COMMUNICATION SYSTEM (NTCS)  
SUBURBAN LINES  
CONTROLLED FROM : SYDENHAM  
RADIO AREA CODE : 057 (SYDENHAM)

GRADIENT

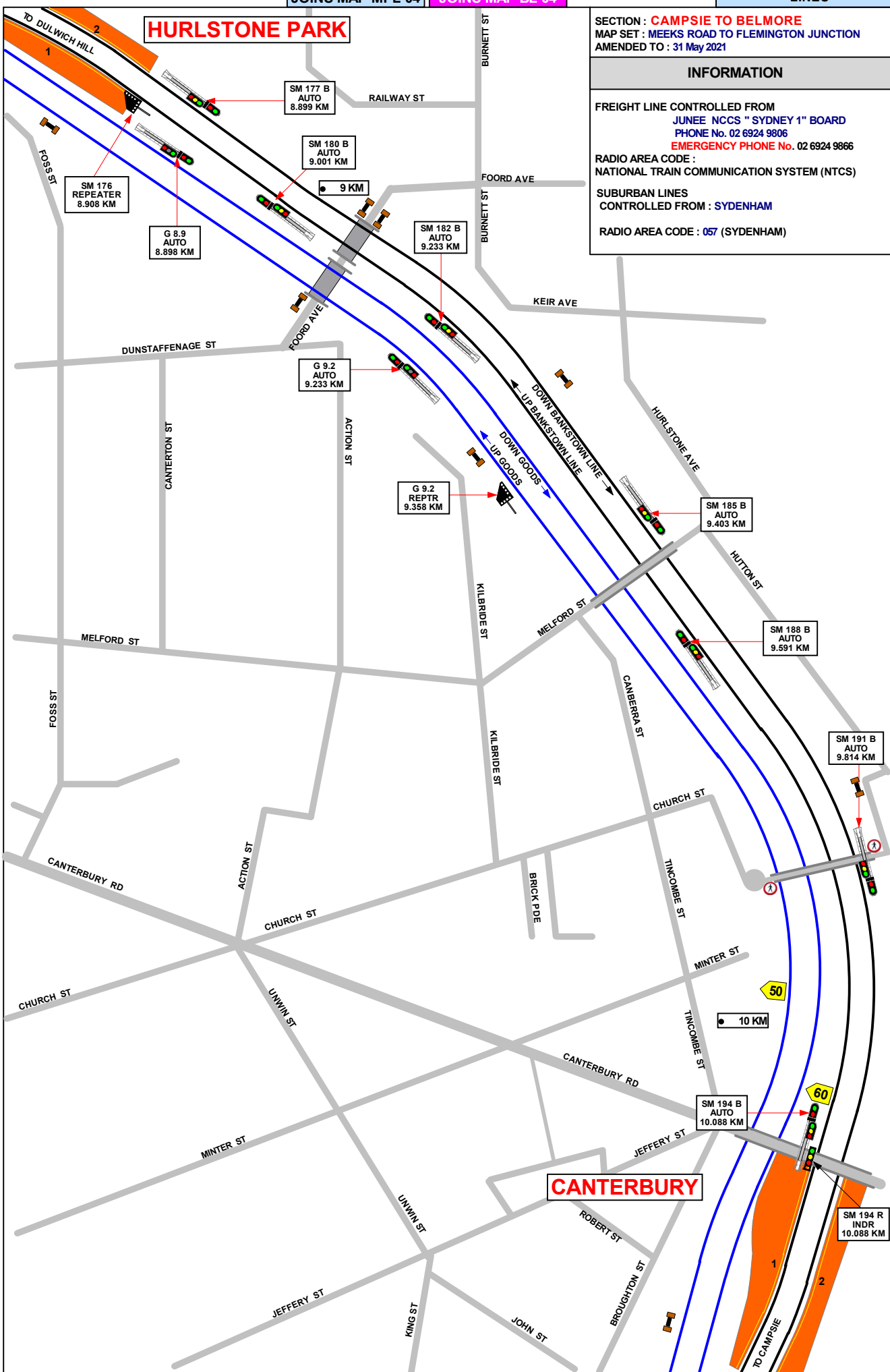
1 IN 170

1 IN 160

1 IN 132

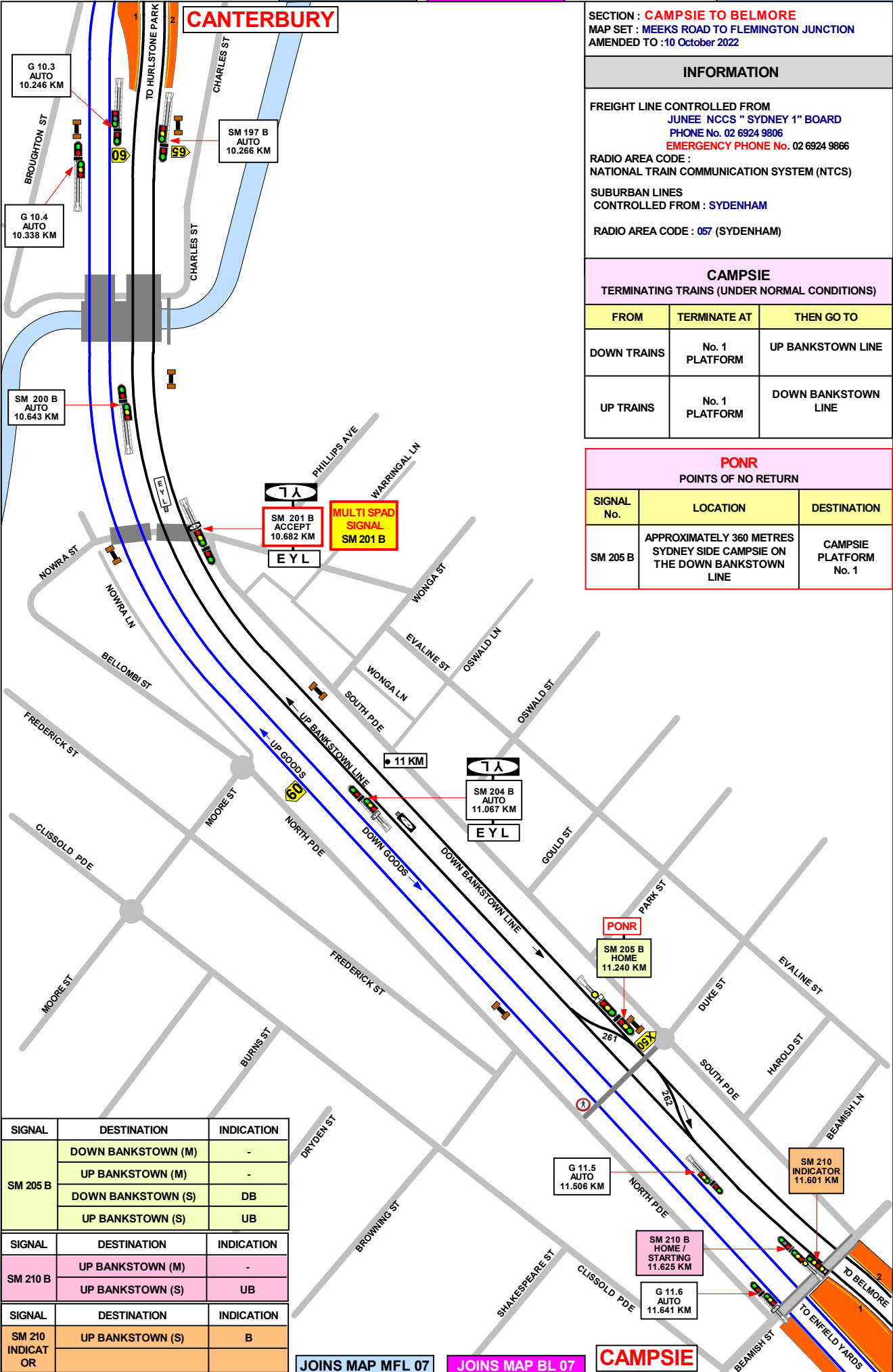
1 IN 100

LEVEL



**CANTERBURY**





SECTION : **CAMPESIE TO BELMORE**  
 MAP SET : MEEKS ROAD TO FLEMINGTON JUNCTION  
 AMENDED TO : 10 October 2022

**INFORMATION**

FREIGHT LINE CONTROLLED FROM  
 JUNEE NCCS " SYDNEY 1" BOARD  
 PHONE No. 02 6924 9806  
 EMERGENCY PHONE No. 02 6924 9866

RADIO AREA CODE :  
 NATIONAL TRAIN COMMUNICATION SYSTEM (NTCS)

SUBURBAN LINES  
 CONTROLLED FROM : SYDENHAM

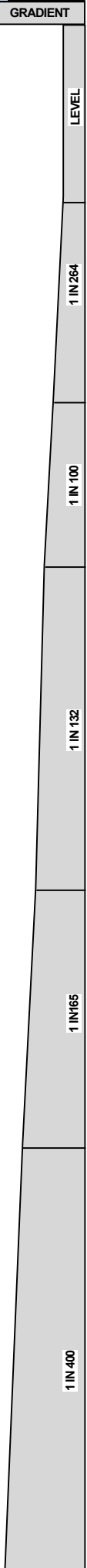
RADIO AREA CODE : 057 (SYDENHAM)

**CAMPESIE**  
 TERMINATING TRAINS (UNDER NORMAL CONDITIONS)

FROM	TERMINATE AT	THEN GO TO
DOWN TRAINS	No. 1 PLATFORM	UP BANKSTOWN LINE
UP TRAINS	No. 1 PLATFORM	DOWN BANKSTOWN LINE

**PONR**  
 POINTS OF NO RETURN

SIGNAL No.	LOCATION	DESTINATION
SM 205 B	APPROXIMATELY 360 METRES SYDNEY SIDE CAMPESIE ON THE DOWN BANKSTOWN LINE	CAMPESIE PLATFORM No. 1



SIGNAL	DESTINATION	INDICATION
SM 205 B	DOWN BANKSTOWN (M)	-
	UP BANKSTOWN (M)	-
	DOWN BANKSTOWN (S)	DB
	UP BANKSTOWN (S)	UB
SM 210 B	UP BANKSTOWN (M)	-
	UP BANKSTOWN (S)	UB
SM 210 INDICATOR	UP BANKSTOWN (S)	B

TO CANTERBURY

SIGNAL	DESTINATION	INDICATION
SM 210 B	UP BANKSTOWN (M)	---
	UP BANKSTOWN (S)	---
SIGNAL	DESTINATION	INDICATION
SM 217 B	DOWN BANKSTOWN (M)	---
	DOWN BANKSTOWN (S)	DB

SECTION : **CAMPDIE TO BELMORE**  
 MAP SET : MEEKS ROAD TO FLEMINGTON JUNCTION  
 AMENDED TO : 10 October 2022

GRADIENT

**INFORMATION**

FREIGHT LINE CONTROLLED FROM  
 JUNEJ NCCS " SYDNEY 1" BOARD  
 PHONE No. 02 6924 9806  
 EMERGENCY PHONE No. 02 6924 9866

RADIO AREA CODE :  
 NATIONAL TRAIN COMMUNICATION SYSTEM (NTCS)

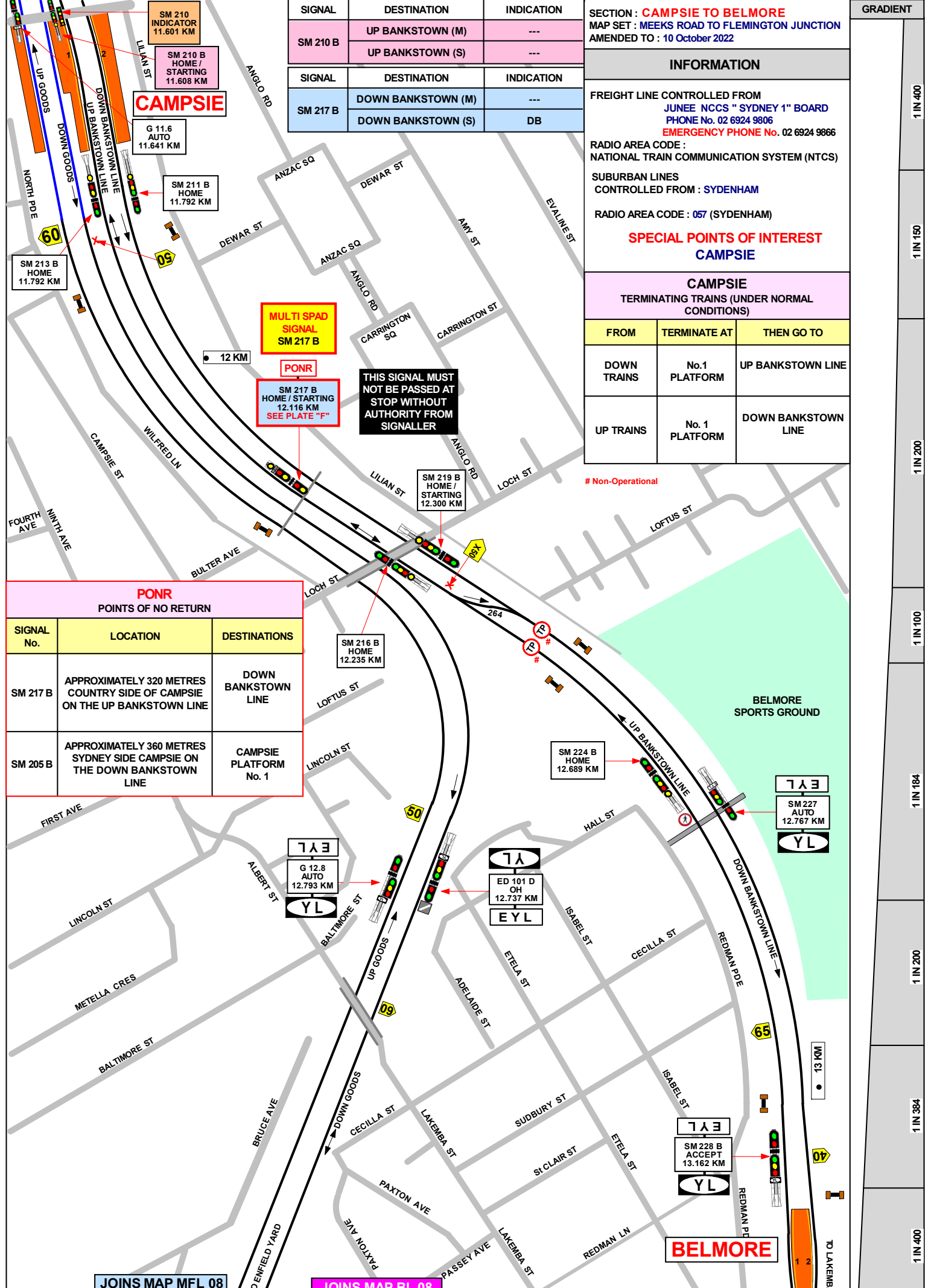
SUBURBAN LINES  
 CONTROLLED FROM : SYDENHAM

RADIO AREA CODE : 057 (SYDENHAM)

**SPECIAL POINTS OF INTEREST  
 CAMPDIE**

**CAMPDIE  
 TERMINATING TRAINS (UNDER NORMAL  
 CONDITIONS)**

FROM	TERMINATE AT	THEN GO TO
DOWN TRAINS	No.1 PLATFORM	UP BANKSTOWN LINE
UP TRAINS	No. 1 PLATFORM	DOWN BANKSTOWN LINE



**MULTI SPAD  
 SIGNAL  
 SM 217 B**

**PONR  
 SM 217 B  
 HOME / STARTING  
 12.116 KM  
 SEE PLATE "F"**

**THIS SIGNAL MUST  
 NOT BE PASSED AT  
 STOP WITHOUT  
 AUTHORITY FROM  
 SIGNALLER**

**PONR  
 POINTS OF NO RETURN**

SIGNAL No.	LOCATION	DESTINATIONS
SM 217 B	APPROXIMATELY 320 METRES COUNTRY SIDE OF CAMPDIE ON THE UP BANKSTOWN LINE	DOWN BANKSTOWN LINE
SM 205 B	APPROXIMATELY 360 METRES SYDNEY SIDE CAMPDIE ON THE DOWN BANKSTOWN LINE	CAMPDIE PLATFORM No. 1

# Non-Operational

1 IN 400  
 1 IN 150  
 1 IN 200  
 1 IN 100  
 1 IN 184  
 1 IN 200  
 1 IN 384  
 1 IN 400

SECTION : **CAMPSIE TO ENFIELD YARD**  
 MAP SET : MEEKS ROAD TO FLEMINGTON JUNCTION  
 AMENDED TO : 17 NOVEMBER 2015

GRADIENT

**INFORMATION**

FREIGHT LINE CONTROLLED FROM  
 JUNE E NCCS " SYDNEY 1" BOARD  
 PHONE No. 02 6924 9806  
 EMERGENCY PHONE No. 02 6924 9866

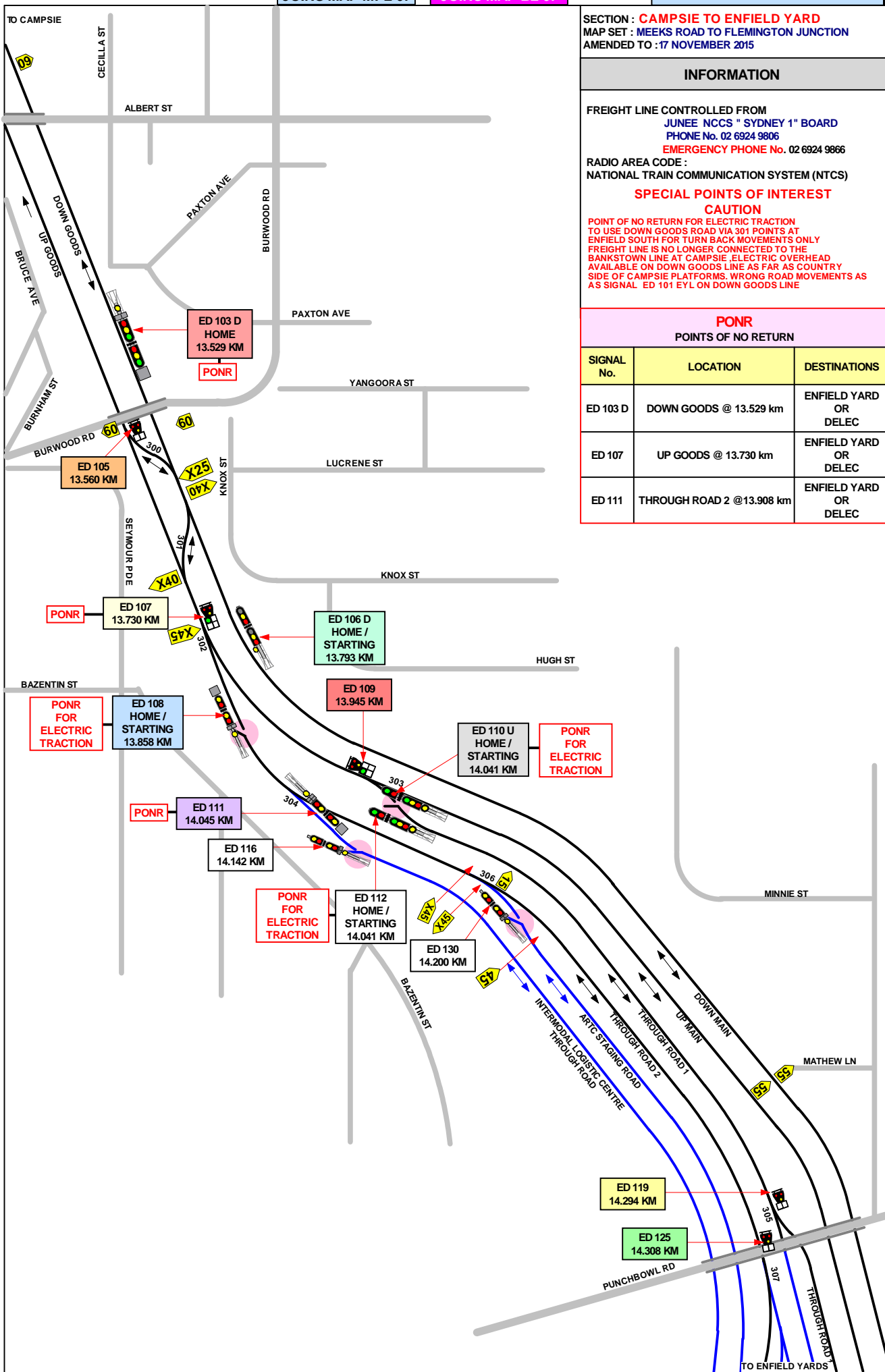
RADIO AREA CODE :  
 NATIONAL TRAIN COMMUNICATION SYSTEM (NTCS)

**SPECIAL POINTS OF INTEREST**  
**CAUTION**

POINT OF NO RETURN FOR ELECTRIC TRACTION  
 TO USE DOWN GOODS ROAD VIA 301 POINTS AT  
 ENFIELD SOUTH FOR TURN BACK MOVEMENTS ONLY  
 FREIGHT LINE IS NO LONGER CONNECTED TO THE  
 BANKSTOWN LINE AT CAMPSIE. ELECTRIC OVERHEAD  
 AVAILABLE ON DOWN GOODS LINE AS FAR AS COUNTRY  
 SIDE OF CAMPSIE PLATFORMS. WRONG ROAD MOVEMENTS AS  
 AS SIGNAL ED 101 EYL ON DOWN GOODS LINE

**PONR**  
 POINTS OF NO RETURN

SIGNAL No.	LOCATION	DESTINATIONS
ED 103 D	DOWN GOODS @ 13.529 km	ENFIELD YARD OR DELEC
ED 107	UP GOODS @ 13.730 km	ENFIELD YARD OR DELEC
ED 111	THROUGH ROAD 2 @ 13.908 km	ENFIELD YARD OR DELEC



1 IN 400

1 IN 200

1 IN 100

1 IN 100

LEVEL

1 IN 100

1 IN 106

SIGNAL	DESTINATION	INDICATION
ED 103 D	DOWN MAIN (M)	D
	DOWN MAIN (S)	DM
	UP MAIN (M)	U
	UP MAIN (S)	UM
	THROUGH ROAD 2 (M)	T2

SIGNAL	DESTINATION	INDICATION
ED 105	DOWN MAIN (S)	DM
	UP MAIN (S)	UM

SIGNAL	DESTINATION	INDICATION
ED 106 D	UP GOODS (M)	---
	UP GOODS (S)	UG

SIGNAL	DESTINATION	INDICATION
ED 107	UP MAIN (M)	GREEN LIGHT
	UP MAIN (S)	UM
	THROUGH ROAD 2 (M)	T2

SIGNAL	DESTINATION	INDICATION
ED 108	UP GOODS (M)	---
	UP GOODS (S)	UG

SIGNAL	DESTINATION	INDICATION
ED 109	UP MAIN (M)	GREEN LIGHT
	UP MAIN (S)	UM
	THROUGH ROAD 1 (M)	T1

SIGNAL	DESTINATION	INDICATION
ED 110 U	UP GOODS (M)	---
	UP GOODS (S)	UG

SIGNAL	DESTINATION	INDICATION
ED 111	THROUGH ROAD 2 (M)	T2
	STAGING ROAD 1 (M)	S
	STAGING ROAD 1 (S)	S1
	ILC (S)	LC

SIGNAL	DESTINATION	INDICATION
ED 112	UP GOODS (M)	---
	UP GOODS (S)	UG

SIGNAL	DESTINATION	INDICATION
ED 116	THROUGH ROAD 2 (M)	---
	THROUGH ROAD 2 (M)	---

SIGNAL	DESTINATION	INDICATION
ED 119	THROUGH ROAD 1 (S)	T1
	SOUTH ROAD 1 (S)	1

SIGNAL	DESTINATION	INDICATION
ED 125	SOUTH ROAD 6 (S)	6
	THROUGH ROAD 2 (S)	T2

SIGNAL	DESTINATION	INDICATION
ED 130	THROUGH ROAD 2 (M)	---
	THROUGH ROAD 2 (M)	---

SIGNAL	DESTINATION	INDICATION
ED 139 S	LOCO STORAGE (S)	LS
	THROUGH ROAD 1 (M)	T1
	NECK (S)	N

SIGNAL	DESTINATION	INDICATION
ED 148	SIDING	→
	SIDING	→
	THROUGH ROAD 1 (M)	T1

SIGNAL	DESTINATION	INDICATION
ED 153	NECK (S)	N
	THROUGH ROAD 2 (M)	---

SIGNAL	DESTINATION	INDICATION
ED 154	THROUGH ROAD 2 (S)	T2
	SIDING (S)	→
	SIDING (S)	→

SIGNAL	DESTINATION	INDICATION
ED 157	SIDING	←
	SIDING	→
	THROUGH ROAD 2 (S)	T2

SIGNAL	DESTINATION	INDICATION
ED 159	THROUGH ROAD 2 (S)	---

SIGNAL	DESTINATION	INDICATION
ED 160	THROUGH ROAD 2 (S)	T2
	NECK (S)	N

SIGNAL	DESTINATION	INDICATION
ED 163	THROUGH ROAD 1 (S)	T1
	SIDING (S)	→
	SIDING (S)	→

SIGNAL	DESTINATION	INDICATION
ED 164	NECK (S)	N
	THROUGH ROAD 1 (S)	T1

SIGNAL	DESTINATION	INDICATION
ED 175	LOCO STORAGE (S)	LS
	THROUGH ROAD 1 (M)	T1

SIGNAL	DESTINATION	INDICATION
ED 176	THROUGH ROAD 1 (S)	T1
	SIDING (S)	→
	SIDING (S)	→

SIGNAL	DESTINATION	INDICATION
ED 501 S	STAGING ROAD 1 (M)	---
	STAGING ROAD 1 (S)	S1
	STAGING ROAD 2 (M)	---
	STAGING ROAD 2 (S)	S2

SIGNAL	DESTINATION	INDICATION
ED 502 S	STAGING ROAD 1 (M)	---
	STAGING ROAD 1 (S)	---

SIGNAL	DESTINATION	INDICATION
ED 504 S	STAGING ROAD 1 (M)	---
	STAGING ROAD 1 (S)	---

SECTION : **CAMPSIE TO ENFIELD YARD**  
 MAP SET : MEEKS ROAD TO FLEMINGTON JUNCTION  
 UPDATED TO : 22 DECEMBER 2014

**INFORMATION**

CONTROLLED FROM : SYDENHAM  
 ENFIELD  
 RADIO AREA CODE : 005 (SYDENHAM)

**SPECIAL POINTS OF INTEREST**

**CAUTION**  
 POINT OF NO RETURN FOR ELECTRIC TRACTION TO USE DOWN GOODS VIA 301 POINTS AT ENFIELD SOUTH FOR TURN BACK MOVEMENTS ONLY  
 FREIGHT LINE IS NO LONGER CONNECTED TO BANKSTOWN LINE AT CAMPSIE ELECTRIC OVERHEAD AVAILABLE ON DOWN GOODS IN THE UP DIRECTION TO SIGNAL SM 230 U AT 12.762 KM NOW A FIXED RED SIGNAL

**PONR**  
 POINTS OF NO RETURN

SIGNAL No.	LOCATION	DESTINATIONS
ED 103 D	DOWN GOODS AT 13.529 KM	ENFIELD YARD OR DELEC
ED 107	UP GOODS AT 13.730 KM	ENFIELD YARD OR DELEC
ED 111	THROUGH ROAD 2 AT 13.908 KM	ENFIELD YARD OR DELEC



DELEC DEPARTURE ROAD (ON LEFT) TO GOODS LINE SIGNAL ED 116



POINT INDICATOR WITH ILLUMINATED ARROW

SECTION : ENFIELD YARD SOUTHERN END  
 MAP SET : MEEKS ROAD TO FLEMINGTON  
 VIA THE GOODS ROAD  
 PAGE : 3 OF 4  
 UPDATED TO : 18 July 2023

**INFORMATION**

FREIGHT LINE CONTROLLED FROM  
 JUNEE NCCS "SYDNEY 2" BOARD  
 PHONE No. 02 6924 9804  
**EMERGENCY PHONE No. 02 6924 9864**  
 RADIO AREA CODE :  
 NATIONAL TRAIN COMMUNICATION SYSTEM (NTCS)  
 RADIO AREA CODE : 038 ( STRATHFIELD )  
 : 895 ( ENFIELD )  
 YARD WORKING : TWO WAY RADIO ONLY

GRADIENT

1 IN 168

1 IN 100

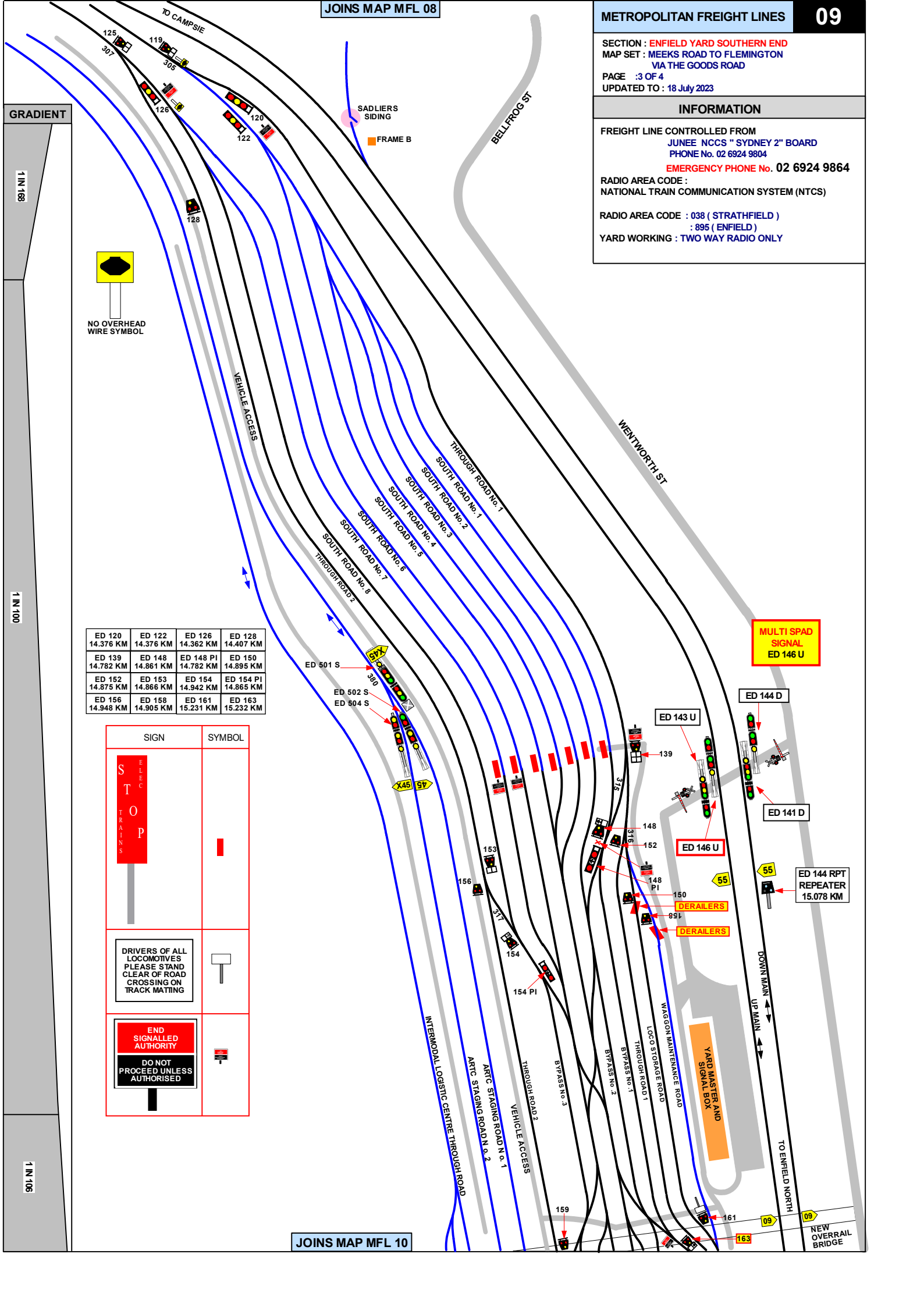
1 IN 105



NO OVERHEAD WIRE SYMBOL

ED 120 14.376 KM	ED 122 14.376 KM	ED 126 14.362 KM	ED 128 14.407 KM
ED 139 14.782 KM	ED 148 14.861 KM	ED 148 PI 14.782 KM	ED 150 14.895 KM
ED 152 14.875 KM	ED 153 14.866 KM	ED 154 14.942 KM	ED 154 PI 14.865 KM
ED 156 14.948 KM	ED 158 14.905 KM	ED 161 15.231 KM	ED 163 15.232 KM

SIGN	SYMBOL



SECTION : ENFIELD YARD SOUTHERN END  
 MAP SET : MEEKS ROAD TO FLEMINGTON  
 VIA THE GOODS ROAD

PAGE : 2 OF 4  
 UPDATED TO : 18 June 2018

**INFORMATION**

CONTROLLED FROM :  
 ENFIELD CONTROL CENTRE

FREIGHT LINE CONTROLLED FROM:  
 JUNEE NCCS " SYDNEY 2" BOARD  
 PHONE No. 02 6924 9804

EMERGENCY PHONE No. 02 6924 9864

RADIO AREA CODE : 038 ( STRATHFIELD )  
 : 895 ( ENFIELD )

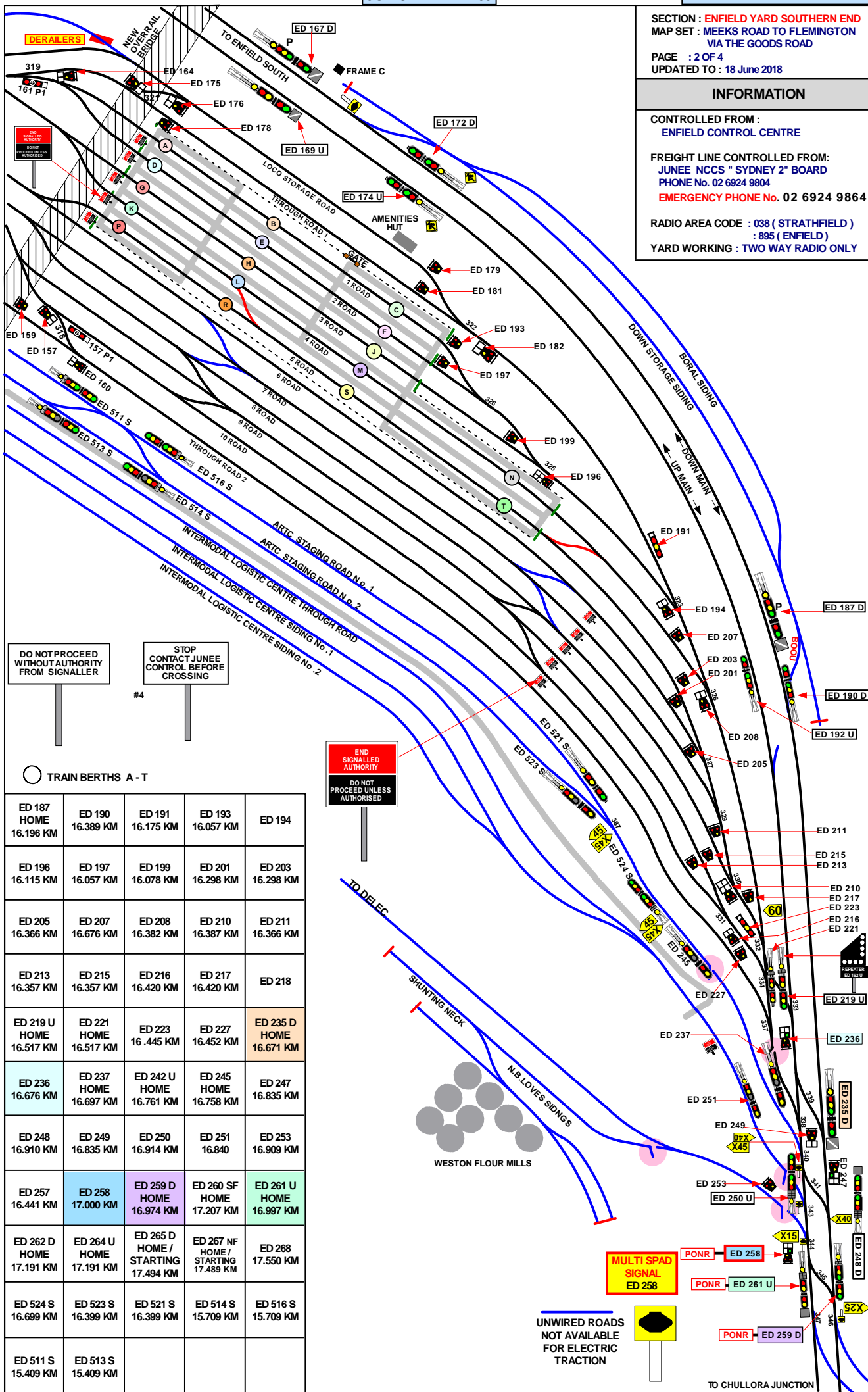
YARD WORKING : TWO WAY RADIO ONLY

GRADIENT

1 IN 100

LEVEL

1 IN 100



PONR POINTS OF NO RETURN		
SIGNAL No.	LOCATION	DESTINATIONS
ED 236	UP MAIN AT 16.676 KM	ENFIELD YARD
ED 238	DOWN MAIN AT 16.750 KM	ENFIELD YARD
ED 259 D	DOWN MAIN AT 16.974 KM NEAR SOUTH JUNCTION	SEFTON PARK JUNCTION OR CHULLORA SIDINGS OR LIDCOMBE OR OLYMPIC PARK OR FLEMINGTON MARKETS
ED 258	UP MAIN AT 17.000 KM NEAR SOUTH JUNCTION	WESTON FLOUR MILLS SIDING OR ENFIELD YARD
ED 261 U	UP MAIN AT 16.997 KM NEAR SOUTH JUNCTION	SEFTON PARK JUNCTION OR CHULLORA SIDINGS OR LIDCOMBE OR OLYMPIC PARK OR FLEMINGTON MARKETS
ED 262 U	DOWN MAIN AT 17.191 KM AT SOUTH JUNCTION	WESTON FLOUR MILLS SIDING
ED 268	UP MAIN AT 17.550 KM AT NORTH JUNCTION	ENFIELD YARD WESTON MILLS SIDING OR CHULLORA SIDINGS OR SEFTON PARK JUNCTION

SIGNAL	DESTINATION	INDICATION
ED 182	THROUGH ROAD (S)	T1
	LOCO STORAGE ( S )	LS

SIGNAL	DESTINATION	INDICATION
ED 185	SHUNTING NECK	←
	DOWN MAIN ( S )	DM

SIGNAL	DESTINATION	INDICATION
ED 190 D	DOWN MAIN (M)	---
	DOWN MAIN (S)	DM
	BORAL SIDING (4D)	BS

SIGNAL	DESTINATION	INDICATION
ED 194	ROAD 3 ( S )	3
	THROUGH ROAD 1 ( S )	T1

SIGNAL	DESTINATION	INDICATION
ED 196	ROAD 3 (S)	3
	ROAD 2 (S)	2
	ROAD 1 (S)	1

SIGNAL	DESTINATION	INDICATION
ED 208	ROAD 4 ( S )	4
	THROUGH ROAD 1 ( S )	T1

SIGNAL	DESTINATION	INDICATION
ED 210	ROAD 8 (S)	8
	ROAD 7 (S)	7
	ROAD 6 (S)	6
	ROAD 5 (S)	5

SIGNAL	DESTINATION	INDICATION
ED 216	ROAD 10 ( S )	10
	ROAD 9 ( S )	9

SIGNAL	DESTINATION	INDICATION
ED 218	ROAD 5 ( S )	5
	THROUGH ROAD 1 ( S )	T1

SIGNAL	DESTINATION	INDICATION
ED 219	DOWN MAIN (M)	---
	DOWN MAIN (S)	DM
	UP MAIN (M)	---
	UP MAIN (S)	UM

SIGNAL	DESTINATION	INDICATION
ED 221	DOWN MAIN (M)	---
	DOWN MAIN (S)	DM
	THROUGH ROAD (S)	T1

SIGNAL	DESTINATION	INDICATION
ED 236	THROUGH ROAD (S)	T1
	UP MAIN (S)	GREEN LIGHT
	UP MAIN (S)	UM

SIGNAL	DESTINATION	INDICATION
ED 237	DOWN MAIN (M)	---
	UP MAIN (S)	---

SIGNAL	DESTINATION	INDICATION
ED 245	DOWN MAIN (M)	---
	UP MAIN (M)	---

SIGNAL	DESTINATION	INDICATION
ED 248 D	STAGING ROAD 1 (M)	S
	STAGING ROAD 1 (S)	S1
	THROUGH ROAD 2 (S)	T2
	ROAD 9 (S)	9
	THROUGH ROAD 1 (S)	T1
	UP MAIN (VIA 341 PTS R) (S)	U
	UP MAIN (VIA 341 PTS R) (S)	UM
	UP MAIN (VIA 339 PTS R) (S)	U
	UP MAIN (VIA 339 PTS R) (S)	UM
	DOWN MAIN (M)	D
DOWN MAIN (S)	DM	

SIGNAL	DESTINATION	INDICATION
ED 249	DOWN MAIN (S)	DM
	UP MAIN (S)	UP

SIGNAL	DESTINATION	INDICATION
ED 250 U	ILC (S)	LC
	STAGING ROAD 1 (M)	S
	STAGING ROAD 1 (S)	S1
	THROUGH ROAD 2 (S)	T2
	ROAD 9 (S)	9
	THROUGH ROAD 1 (S)	T1
	UP MAIN (M)	U
UP MAIN (S)	UM	

SIGNAL	DESTINATION	INDICATION
ED 251	UP MAIN (M)	---
	UP MAIN (S)	---

SIGNAL	DESTINATION	INDICATION
ED 258	DELEC (S)	DC
	UP MAIN (S)	UM
	UP MAIN (S)	GREEN LIGHT

SIGNAL	DESTINATION	INDICATION
ED 259 D	DOWN SOUTH FORK (M)	---
	DOWN SOUTH FORK (S)	SF
	DOWN MAIN (M)	---
	DOWN MAIN (S)	DM

SIGNAL	DESTINATION	INDICATION
ED 261 U	DOWN SOUTH FORK (M)	S
	DOWN SOUTH FORK (S)	SF
	DOWN MAIN (M)	M
	DOWN MAIN (S)	DM
UP MAIN (S)	UM	

SIGNAL	DESTINATION	INDICATION
ED 262 D	UP MAIN (S)	UM
	DOWN MAIN (M)	-
	DOWN MAIN (S)	DM

SECTION : ENFIELD TO CHULLORA NORTH JUNCTION  
 MAP SET : MEEKS ROAD TO FLEMINGTON JUNCTION  
 UPDATED TO : 18 June 2018

**INFORMATION**

FREIGHT LINE CONTROLLED FROM  
 JUNEE NCCS " SYDNEY 2" BOARD  
 PHONE No. 02 6924 9804  
**EMERGENCY PHONE No. 02 6924 9863**  
 RADIO AREA CODE :  
 NATIONAL TRAIN COMMUNICATION SYSTEM (NTCS)  
 RADIO AREA CODE : 038 ( STRATHFIELD )  
 : 895 ( ENFIELD )  
 YARD WORKING : TWO WAY RADIO ONLY

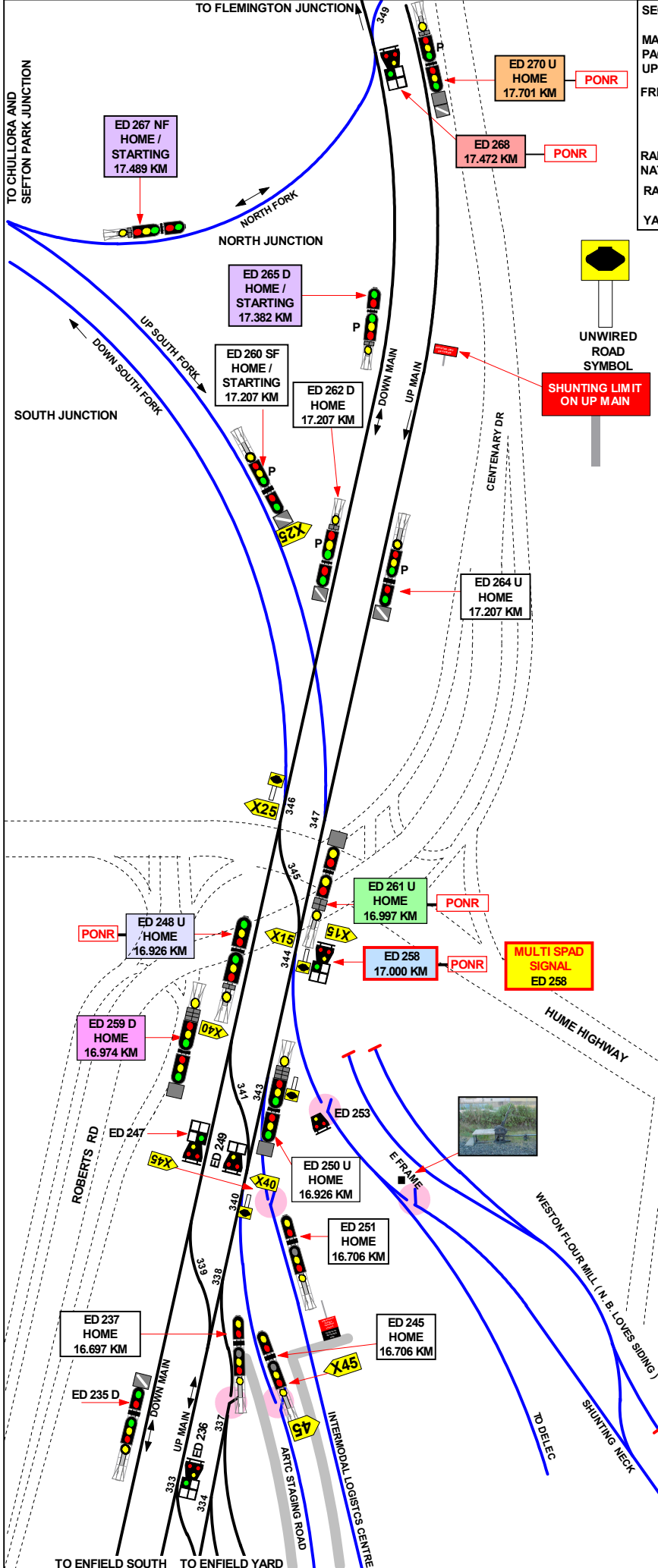
SECTION : DELEC ENFIELD LOCOMOTIVE DEPOT AND CHULLORA JUNCTION

MAP SET : YARDS  
PAGE: 2 OF 5  
UPDATED TO : 3 October 2023

FREIGHT LINE CONTROLLED FROM  
JUNEE NCCS " SYDNEY 2" BOARD  
PHONE No. 02 6924 9804  
EMERGENCY PHONE No. 02 6924 9863

RADIO AREA CODE :  
NATIONAL TRAIN COMMUNICATION SYSTEM (NTCS)  
RADIO AREA CODE : 038 ( STRATHFIELD )  
: 895 ( ENFIELD )  
YARD WORKING : TWO WAY RADIO ONLY

GRADIENT



UNWIRED ROAD SYMBOL

SHUNTING LIMIT ON UP MAIN

MULTI SPAD SIGNAL ED 258

SIGNAL	DESTINATION	INDICATION	
ED 270 U	UP MAIN (M)		
	UP MAIN (S)	UM	
	DOWN MAIN (M)	D	
	DOWN MAIN (S)	DM	
	NORTH FORK (S)	N	

SIGNAL	DESTINATION	INDICATION	
ED 268	DOWN MAIN (S)	DM	
	NORTH FORK (S)	NF	
	DOWN MAIN (M)	GREEN	LIGHT

SIGNAL	DESTINATION	INDICATION	
ED 265 D ED 267 NF	UP MAIN (M)	---	
	UP MAIN (S)	UM	
	DOWN MAIN (M)	---	
	DOWN MAIN (S)	DM	

SIGNAL	DESTINATION	INDICATION	
ED 260 SF ED 264 U	UP MAIN (M)	---	
	UP MAIN (S)	---	

SIGNAL	DESTINATION	INDICATION	
ED 261 U	DOWN SOUTH FORK (M)	S	
	DOWN SOUTH FORK (S)	SF	
	DOWN MAIN (M)	M	
	DOWN MAIN (S)	DM	
	UP MAIN (S)	UM	

SIGNAL	DESTINATION	INDICATION	
ED 248 U	DOWN SOUTH FORK (M)	---	
	DOWN SOUTH FORK (S)	SF	
	DOWN MAIN (M)	---	
	DOWN MAIN (S)	DM	

SIGNAL	DESTINATION	INDICATION	
ED 258	DELEC (S)	DC	
	UP MAIN (S)	UM	
	UP MAIN (S)	GREEN	LIGHT

SIGNAL	DESTINATION	INDICATION	
ED 251	UP MAIN (M)	---	
	UP MAIN (S)	---	

SIGNAL	DESTINATION	INDICATION	
ED 250 U	ILC (S)	LC	
	STAGING ROAD 1 (M)	S	
	STAGING ROAD 1 (S)	S1	
	THROUGH ROAD 2 (S)	T2	
	ROAD 9 (S)	9	
	THROUGH ROAD 1 (S)	T1	
	UP MAIN (M)	U	
UP MAIN (S)	UM		

SIGNAL	DESTINATION	INDICATION	
ED 249	DOWN MAIN (S)	DM	
	UP MAIN (S)	UP	

SIGNAL	DESTINATION	INDICATION	
ED 259 D	STAGING ROAD 1 (M)	S	
	STAGING ROAD 1 (S)	S1	
	THROUGH ROAD 2 (S)	T2	
	ROAD 9 (S)	9	
	THROUGH ROAD 1 (S)	T1	
	UP MAIN (VIA 341 PTS R) (S)	U	
	UP MAIN (VIA 341 PTS R) (S)	UM	
	UP MAIN (VIA 339 PTS R) (S)	U	
	UP MAIN (VIA 339 PTS R) (S)	UM	
	DOWN MAIN (M)	D	
DOWN MAIN (S)	DM		

1 IN 100



JOINS MAP MFL 11

ED 264 U HOME 17.207 KM  
 ED 262 D HOME 17.207 KM  
 ED 268 17.472 KM  
 ED 270 U HOME 17.701 KM  
 ED 265 D HOME / STARTING 17.382 KM

SECTION : CHULLORA NORTH JUNCTION TO FLEMINGTON SOUTH JUNCTION  
 MAP SET : MEEKS ROAD TO FLEMINGTON JUNCTION  
 UPDATED TO : 5 May 2024

INFORMATION

FREIGHT LINE CONTROLLED FROM JUNE E NCCS " SYDNEY 2" BOARD  
 PHONE No. 02 6924 9804  
**EMERGENCY PHONE No. 02 6924 9863**  
 RADIO AREA CODE : NATIONAL TRAIN COMMUNICATION SYSTEM (NTCS)  
 RADIO AREA CODE : 038 ( LIDCOMBE ) : 895 ( ENFIELD )

PONR

POINTS OF NO RETURN

SIGNAL No.	LOCATION	DESTINATIONS
ED 268	CHULLORA NORTH JUNCTION	TURN OUT FOR DOWN GOODS
ED 270 U	CHULLORA NORTH JUNCTION	TURN OUT FOR DOWN GOODS
ST 371 SJD	DOWN MAIN 19.807 KM	LIDCOMBE OR UP OR DOWN FLEMINGTON GOODS OR OLYMPIC PARK

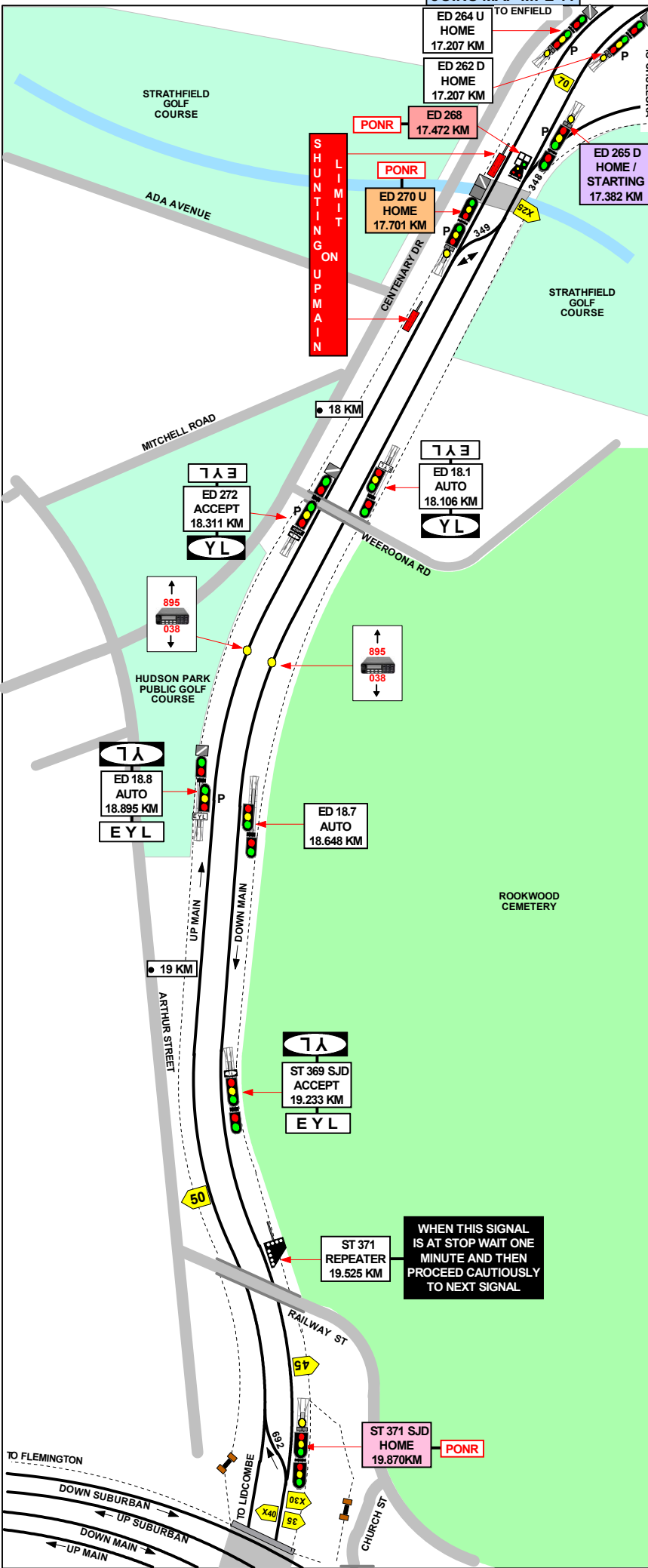
SIGNAL	DESTINATION	INDICATION
ED 262 D	UP MAIN (S)	UM
	DOWN MAIN (M)	-
	DOWN MAIN (S)	DM

SIGNAL	DESTINATION	INDICATION
ED 265 D ED 267 NF	UP MAIN (M)	---
	UP MAIN (S)	UM
	DOWN MAIN (M)	---
	DOWN MAIN (S)	DM

SIGNAL	DESTINATION	INDICATION
ED 268	DOWN MAIN (S)	DM
	NORTH FORK (S)	NF
	DOWN MAIN (M)	GREEN LIGHT

SIGNAL	DESTINATION	INDICATION
ED 270 U	UP MAIN (M)	UM
	UP MAIN (S)	UM
	DOWN MAIN (M)	D
	DOWN MAIN (S)	DM
	NORTH FORK (S)	N

SIGNAL	DESTINATION	INDICATION
ST 371 SJD	DOWN ENFIELD WEST FORK (M)	-
	DOWN ENFIELD WEST FORK (S)	WF
	DOWN ENFIELD EAST FORK (M)	-
	DOWN ENFIELD EAST FORK (S)	EF



WHEN THIS SIGNAL IS AT STOP WAIT ONE MINUTE AND THEN PROCEED CAUTIOUSLY TO NEXT SIGNAL

JOINS MAP MS 14

1 IN 100

1 IN 100

1 IN 100