

# DRIVERS ROUTE KNOWLEDGE DIAGRAMS

## FREIGHT LINES

MEEKS ROAD

MARRICKVILLE

DULWICH HILL

HURLSTONE PARK

CANTERBURY

CAMPSIE

CAMPSIE TO  
ENFIELD YARD SOUTH

ENFIELD YARD SOUTH

ENFIELD YARD NORTH

CHULLORA JUNCTION

FLEMINGTON JUNCTION

**Effective Date:** June 2025

**Version:** 4.39

### Explanatory Notes:

Navigate to your area of interest via the station index or by using links created in Adobe bookmarks.

This document is approved for **route knowledge only**.

**Do not use these diagrams for any safety related purpose** without validating the information against a controlled source or in the field.

Information in these diagrams is uncontrolled.

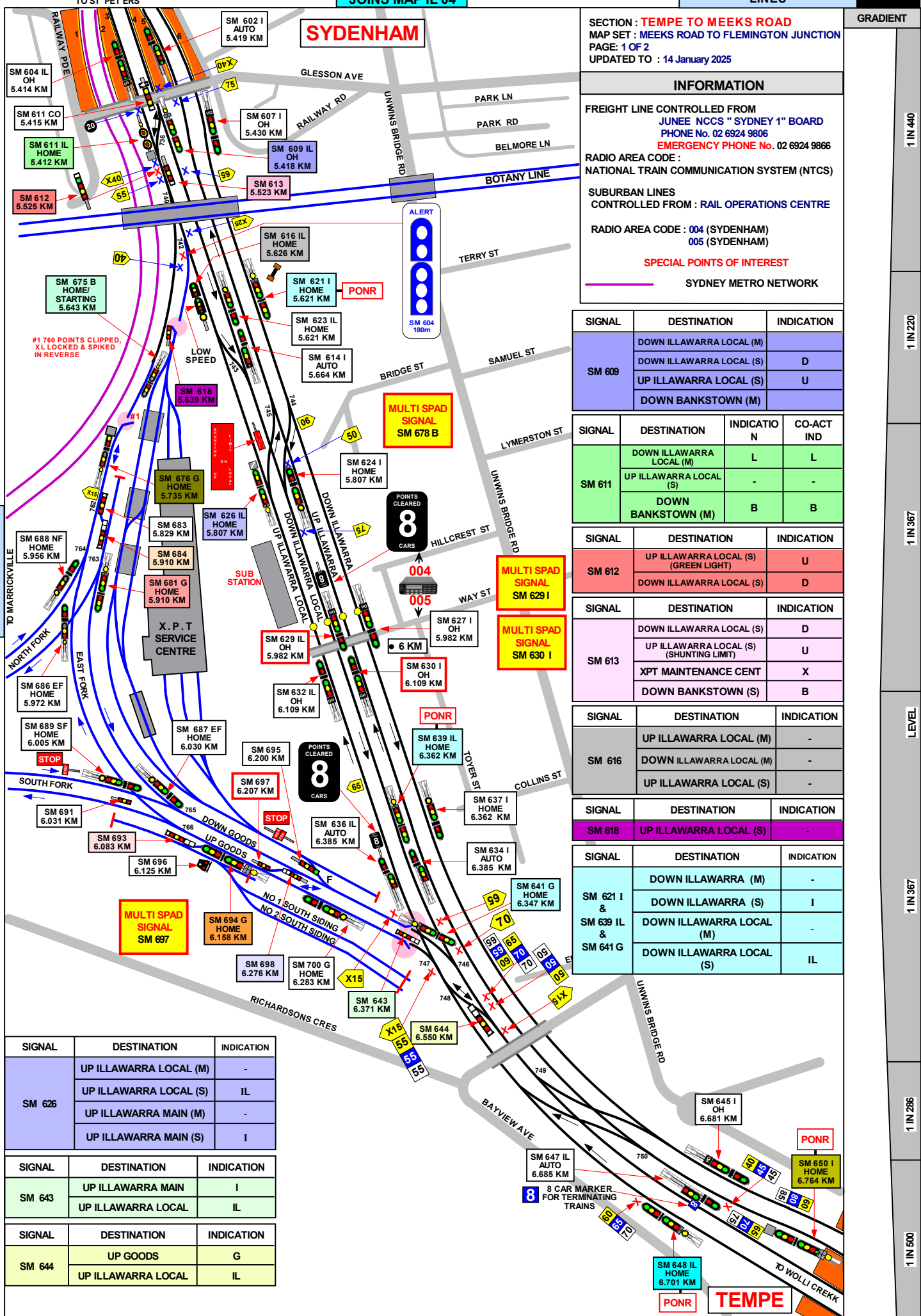
Please report any updates to  
[gjs.support@transport.nsw.gov.au](mailto:gjs.support@transport.nsw.gov.au)



**Copyright:** Sydney Trains

**Ownership:** Geospatial Services

**Location:** TRIM Record No.D2015/562



SECTION : **TEMPE TO MEEKS ROAD**  
 MAP SET : MEEKS ROAD TO FLEMINGTON JUNCTION  
 PAGE: 1 OF 2  
 UPDATED TO : 14 January 2025

GRADIENT  
 1 IN 440  
 1 IN 220  
 1 IN 367  
 LEVEL  
 1 IN 367  
 1 IN 286  
 1 IN 500

**INFORMATION**

FREIGHT LINE CONTROLLED FROM  
 JUNEE NCCS " SYDNEY 1" BOARD  
 PHONE No. 02 6924 9806  
 EMERGENCY PHONE No. 02 6924 9866

RADIO AREA CODE :  
 NATIONAL TRAIN COMMUNICATION SYSTEM (NTCS)

SUBURBAN LINES  
 CONTROLLED FROM : RAIL OPERATIONS CENTRE

RADIO AREA CODE : 004 (SYDENHAM)  
 005 (SYDENHAM)

SPECIAL POINTS OF INTEREST  
 SYDNEY METRO NETWORK

SIGNAL	DESTINATION	INDICATION
SM 609	DOWN ILLAWARRA LOCAL (M)	
	DOWN ILLAWARRA LOCAL (S)	D
	UP ILLAWARRA LOCAL (S)	U
	DOWN BANKSTOWN (M)	

SIGNAL	DESTINATION	INDICATION	CO-ACT IND
SM 611	DOWN ILLAWARRA LOCAL (M)	L	L
	UP ILLAWARRA LOCAL (S)	-	-
	DOWN BANKSTOWN (M)	B	B

SIGNAL	DESTINATION	INDICATION
SM 612	UP ILLAWARRA LOCAL (S) (GREEN LIGHT)	U
	DOWN ILLAWARRA LOCAL (S)	D

SIGNAL	DESTINATION	INDICATION
SM 613	DOWN ILLAWARRA LOCAL (S)	D
	UP ILLAWARRA LOCAL (S) (SHUNTING LIMIT)	U
	XPT MAINTENANCE CENT	X
	DOWN BANKSTOWN (S)	B

SIGNAL	DESTINATION	INDICATION
SM 616	UP ILLAWARRA LOCAL (M)	-
	DOWN ILLAWARRA LOCAL (M)	-
	UP ILLAWARRA LOCAL (S)	-

SIGNAL	DESTINATION	INDICATION
SM 618	UP ILLAWARRA LOCAL (S)	-

SIGNAL	DESTINATION	INDICATION
SM 621 I & SM 639 IL & SM 641 G	DOWN ILLAWARRA (M)	-
	DOWN ILLAWARRA (S)	I
	DOWN ILLAWARRA LOCAL (M)	-
	DOWN ILLAWARRA LOCAL (S)	IL

SIGNAL	DESTINATION	INDICATION
SM 626	UP ILLAWARRA LOCAL (M)	-
	UP ILLAWARRA LOCAL (S)	IL
	UP ILLAWARRA MAIN (M)	-
	UP ILLAWARRA MAIN (S)	I

SIGNAL	DESTINATION	INDICATION
SM 643	UP ILLAWARRA MAIN	I
	UP ILLAWARRA LOCAL	IL

SIGNAL	DESTINATION	INDICATION
SM 644	UP GOODS	G
	UP ILLAWARRA LOCAL	IL

**SECTION : TEMPE TO MEEKS ROAD**  
 MAP SET : MEEKS ROAD TO FLEMINGTON JUNCTION  
 PAGE : 2 OF 2  
 UPDATED TO : 30 September 2024

FREIGHT LINE CONTROLLED FROM  
 JUNE NCCS " SYDNEY 1" BOARD  
 PHONE No. 02 6924 9806  
**EMERGENCY PHONE No. 02 6924 9866**  
 RADIO AREA CODE :  
 NATIONAL TRAIN COMMUNICATION SYSTEM (NTCS)

SUBURBAN LINES  
 CONTROLLED FROM : RAIL OPERATIONS CENTRE  
 RADIO AREA CODE : 004 (SYDENHAM)  
 005 (SYDENHAM)

**APPENDICES PLEASE SEE APPENDICES FOR POINTS OF NO RETURN, TERMINATING MOVEMENTS AND SIDING LENGTHS**

SIGNAL	DESTINATION	INDICATION
SM 648 IL	UP GOODS (M)	-
	UP GOODS (S)	G
	UP ILLAWARRA LOCAL (M)	-
	UP ILLAWARRA LOCAL (S)	IL

SIGNAL	DESTINATION	INDICATION
SM 650 I	UP GOODS (M)	G
	UP GOODS (S)	G
	UP ILLAWARRA LOCAL (M)	IL
	UP ILLAWARRA LOCAL (S)	IL
	UP ILLAWARRA (M)	-
	UP ILLAWARRA (S)	I

PROPELLING MOVEMENTS	
FROM	TO
CLEAR OF No. 775 CROSSOVER	CLEAR OF No. 770 CROSSOVER
CLEAR OF No. 770 CROSSOVER	CLEAR OF No. 775 CROSSOVER

THESE PROPELLING MOVEMENTS ARE FOR NON-ELECTRIC ROLLING STOCK ONLY AND MUST BE CARRIED OUT AS SHOWN IN THE INSTRUCTIONS IN NTR 424 / OSP 15 IN THE NETWORK RULES AND OPERATORS SPECIFIC PROCEDURES MANUALS

SIGNAL	DESTINATION	INDICATION
SM 675 B	DOWN GOODS (M)	-
	DOWN GOODS (S)	G
	DOWN BANKSTOWN (M)	-
	DOWN BANKSTOWN (S)	B

SELF-PROPELLED DIESEL TRAINS MAY TERMINATE ON		
FROM	TERMINATE AT	THEN GO TO
	DOWN EAST FORK	RETURN TO THE UP NORTH FORK VIA No. 762 POINTS.
	DOWN GOODS LINE	RETURN TO THE UP SOUTH FORK VIA No. 770 POINTS.
	DOWN ILLAWARRA LOCAL LINE AT SIGNAL No. SM 644	RETURN TO EITHER THE UP NORTH FORK VIA Nos. 775 AND 773 POINTS OR THE DOWN SOUTH FORK VIA No. 775 POINTS

SIGNAL	DESTINATION	INDICATION
SM 676	UP ILLAWARRA LOCAL (S)	-
	UP ILLAWARRA LOCAL (M)	U
	DOWN ILLAWARRA LOCAL (M)	D

SIGNAL	DESTINATION	INDICATION
SM 681 G	DOWN EAST FORK (M)	-
	DOWN EAST FORK (S)	EF
	DOWN NORTH FORK (M)	-
	DOWN NORTH FORK (S)	NF

SIGNAL	DESTINATION	INDICATION
SM 684	GOODS LINE	G
	NORTH SHUNTING NECK	N

SIGNAL	DESTINATION	INDICATION
SM 693	UP GOODS	UG
	SIDING	S

SIGNAL	DESTINATION	INDICATION
SM 694 G	UP SHUNTING NECK (S)	SN
	UP SOUTH FORK (M)	-
	UP SOUTH FORK (S)	SF
	UP EAST FORK (M)	-
	UP EAST FORK (S)	EF

SIGNAL	DESTINATION	INDICATION
SM 698	UP GOODS	UG
	DOWN GOODS	DG

SECTION : **MEEKS ROAD TO MARRICKVILLE**  
 MAP SET : MEEKS ROAD TO FLEMINGTON JUNCTION  
 UPDATED TO : 17 October 2024

**INFORMATION**

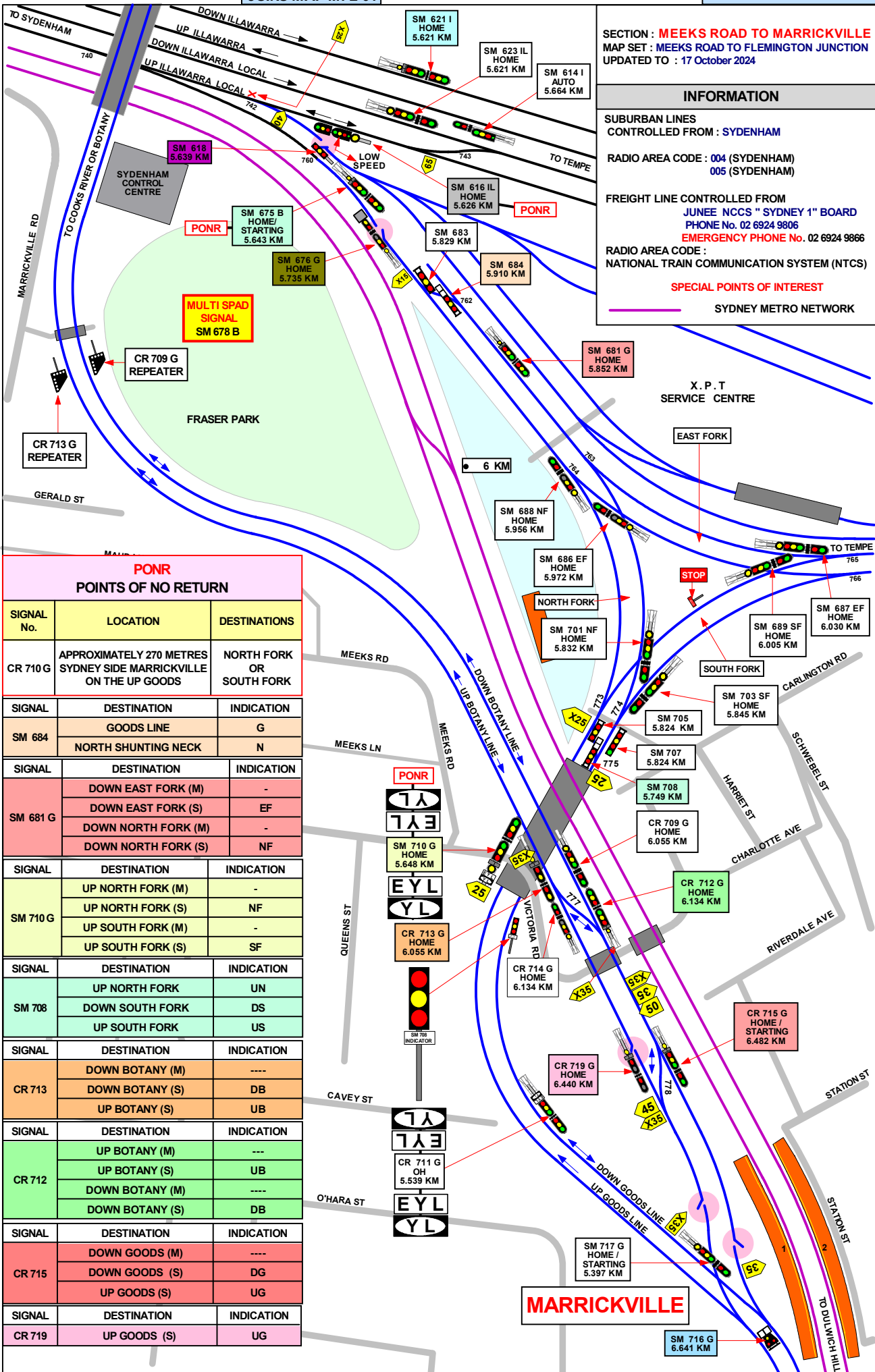
SUBURBAN LINES  
 CONTROLLED FROM : SYDENHAM

RADIO AREA CODE : 004 (SYDENHAM)  
 005 (SYDENHAM)

FREIGHT LINE CONTROLLED FROM  
 JUNE E NCCS " SYDNEY 1" BOARD  
 PHONE No. 02 6924 9806  
**EMERGENCY PHONE No. 02 6924 9866**

RADIO AREA CODE :  
 NATIONAL TRAIN COMMUNICATION SYSTEM (NTCS)

**SPECIAL POINTS OF INTEREST**  
 SYDNEY METRO NETWORK



**PONR  
 POINTS OF NO RETURN**

SIGNAL No.	LOCATION	DESTINATIONS
CR 710 G	APPROXIMATELY 270 METRES SYDNEY SIDE MARRICKVILLE ON THE UP GOODS	NORTH FORK OR SOUTH FORK
SIGNAL	DESTINATION	INDICATION
SM 684	GOODS LINE	G
	NORTH SHUNTING NECK	N
SIGNAL	DESTINATION	INDICATION
SM 681 G	DOWN EAST FORK (M)	-
	DOWN EAST FORK (S)	EF
	DOWN NORTH FORK (M)	-
	DOWN NORTH FORK (S)	NF
SIGNAL	DESTINATION	INDICATION
SM 710 G	UP NORTH FORK (M)	-
	UP NORTH FORK (S)	NF
	UP SOUTH FORK (M)	-
	UP SOUTH FORK (S)	SF
SIGNAL	DESTINATION	INDICATION
SM 708	UP NORTH FORK	UN
	DOWN SOUTH FORK	DS
	UP SOUTH FORK	US
SIGNAL	DESTINATION	INDICATION
CR 713	DOWN BOTANY (M)	----
	DOWN BOTANY (S)	DB
	UP BOTANY (S)	UB
SIGNAL	DESTINATION	INDICATION
CR 712	UP BOTANY (M)	---
	UP BOTANY (S)	UB
	DOWN BOTANY (M)	----
	DOWN BOTANY (S)	DB
SIGNAL	DESTINATION	INDICATION
CR 715	DOWN GOODS (M)	----
	DOWN GOODS (S)	DG
	UP GOODS (S)	UG
SIGNAL	DESTINATION	INDICATION
CR 719	UP GOODS (S)	UG

1 IN 100

1 IN 90

1 IN 100

1 IN 170

SIGNAL	DESTINATION	INDICATION
SM 713 G	DOWN BOTANY (M)	-
	DOWN BOTANY (S)	DB
	UP BOTANY (S)	UB

SIGNAL	DESTINATION	INDICATION
SM 716 G	DOWN GOODS (S)	DG
	DOWN BOTANY (S)	DB

SIGNAL	DESTINATION	INDICATION
SM 719 G	UP GOODS (S)	UG

SIGNAL	DESTINATION	INDICATION
SM 712 G	UP BOTANY (M)	-
	UP BOTANY (S)	UB
	DOWN BOTANY (M)	-
	DOWN BOTANY (S)	DB

SIGNAL	DESTINATION	INDICATION
SM 715 G	DOWN GOODS (M)	-
	DOWN GOODS (S)	DG
	UP GOODS (S)	UG

SUBURBAN LINES  
CONTROLLED FROM : SYDENHAM

RADIO AREA CODE : 005 (SYDENHAM)  
057 (SYDENHAM)

UPDATED : 20 JULY 2015

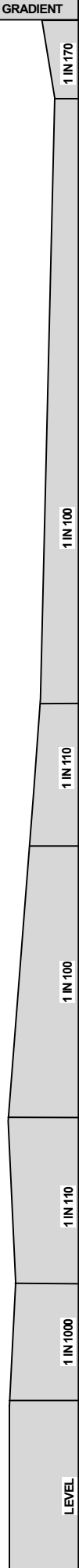
FREIGHT LINE CONTROLLED FROM  
JUNEE NCCS " SYDNEY 1" BOARD  
PHONE No. 02 6924 9806

EMERGENCY PHONE No. 02 6924 9866  
RADIO AREA CODE :  
NATIONAL TRAIN COMMUNICATION SYSTEM (NTCS)



**MARRICKVILLE**

SECTION : **MARRICKVILLE TO DULWICH HILL**  
 MAP SET : MEEKS ROAD TO FLEMINGTON JUNCTION  
 UPDATED TO : 17 October 2024



**INFORMATION**

FREIGHT LINE CONTROLLED FROM  
 JUNEJ NCCS " SYDNEY 1" BOARD  
 PHONE No. 02 6924 9806  
 EMERGENCY PHONE No. 02 6924 9866  
 RADIO AREA CODE :  
 NATIONAL TRAIN COMMUNICATION SYSTEM (NTCS)  
  
 RADIO AREA CODE : 005 (SYDENHAM)  
 057 (SYDENHAM)

**MARRICKVILLE**

**SPECIAL POINTS OF INTEREST**

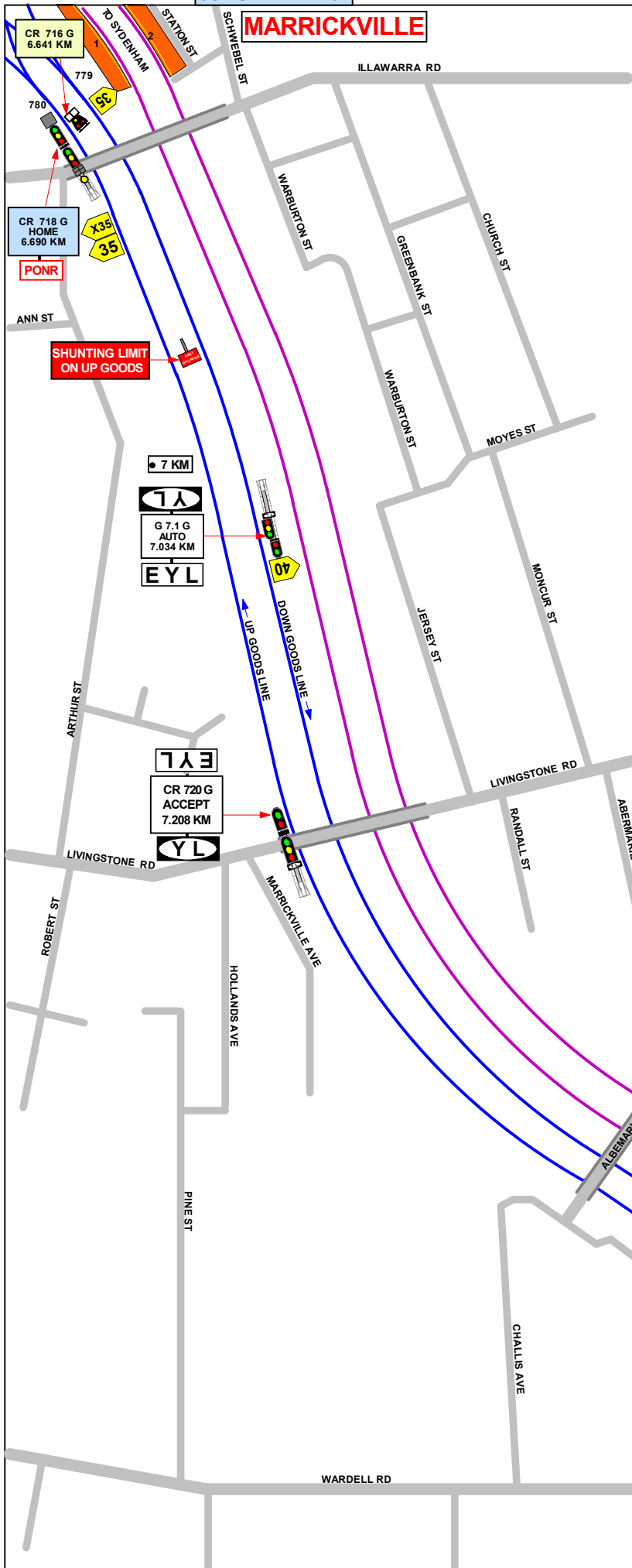
— SYDNEY METRO NETWORK

**PONR**  
 POINTS OF NO RETURN

SIGNAL No.	LOCATION	DESTINATIONS
SM 718 G	APPROXIMATELY 50 METRES COUNTRY SIDE MARRICKVILLE ON THE UP GOODS	UP GOODS LINE OR BOTANY LINE (MARRICKVILLE LOOP)

SIGNAL	DESTINATION	INDICATION
CR 718 G	UP GOODS (M)	-
	UP GOODS (S)	UG
	UP BOTANY (M)	UB
	UP BOTANY (S)	UB
	DOWN BOTANY (M)	DB
DOWN BOTANY (S)	DB	

SIGNAL	DESTINATION	INDICATION
CR 716 G	DOWN GOODS	DG
	DOWN BOTANY	DB



**DULWICH HILL**

DULWICH HILL

SECTION : CAMPSIE TO BELMORE  
MAP SET : MEEKS ROAD TO FLEMINGTON JUNCTION  
AMENDED TO : 17 October 2024

GRADIENT

INFORMATION

FREIGHT LINE CONTROLLED FROM  
JUNEE NCCS " SYDNEY 1" BOARD  
PHONE No. 02 6924 9806  
EMERGENCY PHONE No. 02 6924 9866

RADIO AREA CODE :  
NATIONAL TRAIN COMMUNICATION SYSTEM (NTCS)

RADIO AREA CODE : 005 (SYDENHAM)  
057 (SYDENHAM)

SPECIAL POINTS OF INTEREST

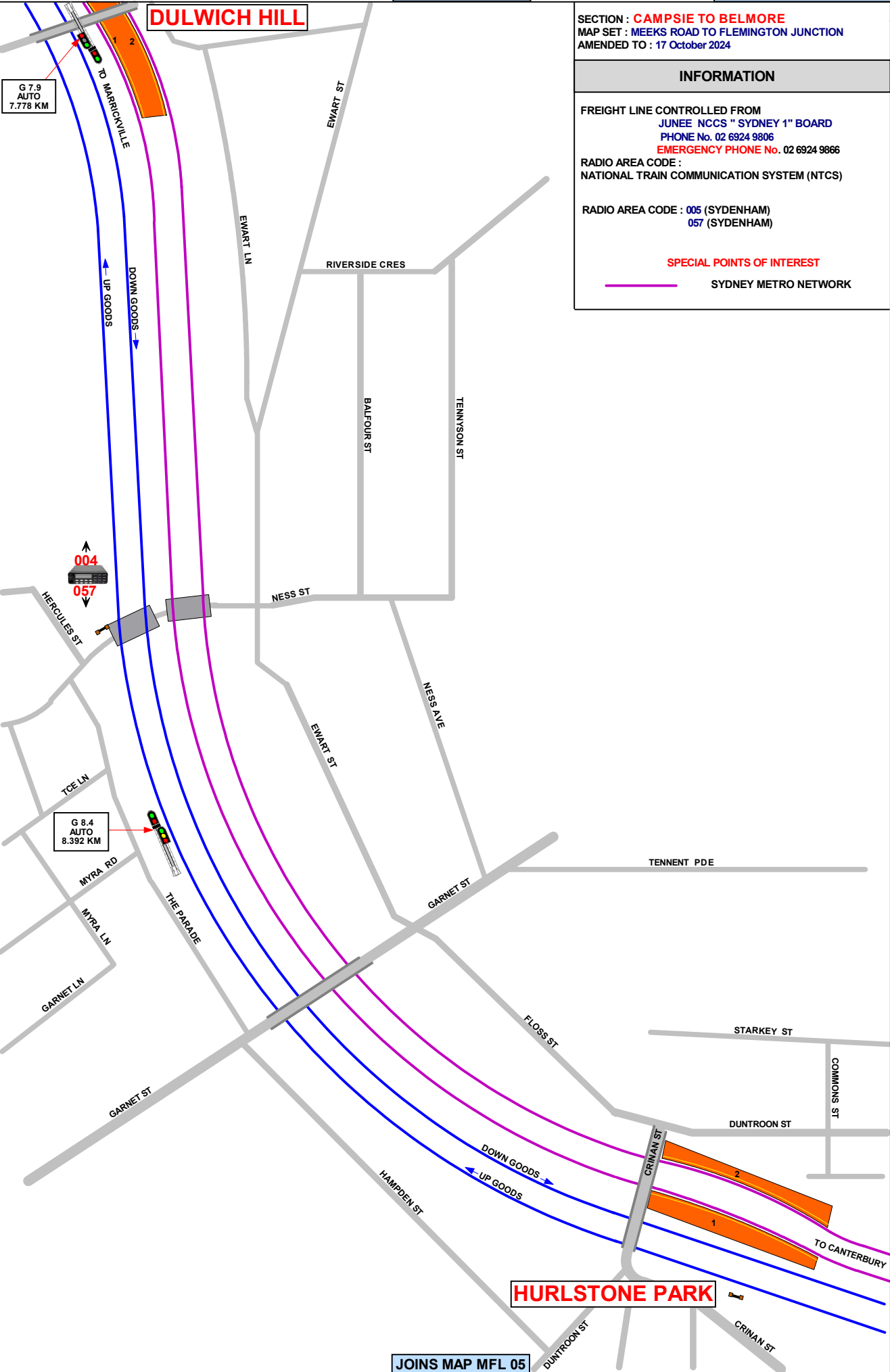
SYDNEY METRO NETWORK

LEVEL

1 IN 425

1 IN 440

1 IN 170



HURLSTONE PARK

**HURLSTONE PARK**

SECTION : **CAMPBIE TO BELMORE**  
MAP SET : MEEKS ROAD TO FLEMINGTON JUNCTION  
AMENDED TO : 17 October 2024

**INFORMATION**

FREIGHT LINE CONTROLLED FROM  
JUNEE NCCS " SYDNEY 1" BOARD  
PHONE No. 02 6924 9806  
EMERGENCY PHONE No. 02 6924 9866  
RADIO AREA CODE :  
NATIONAL TRAIN COMMUNICATION SYSTEM (NTCS)  
RADIO AREA CODE : 057 (SYDENHAM)

**SPECIAL POINTS OF INTEREST**

 SYDNEY METRO NETWORK

GRADIENT

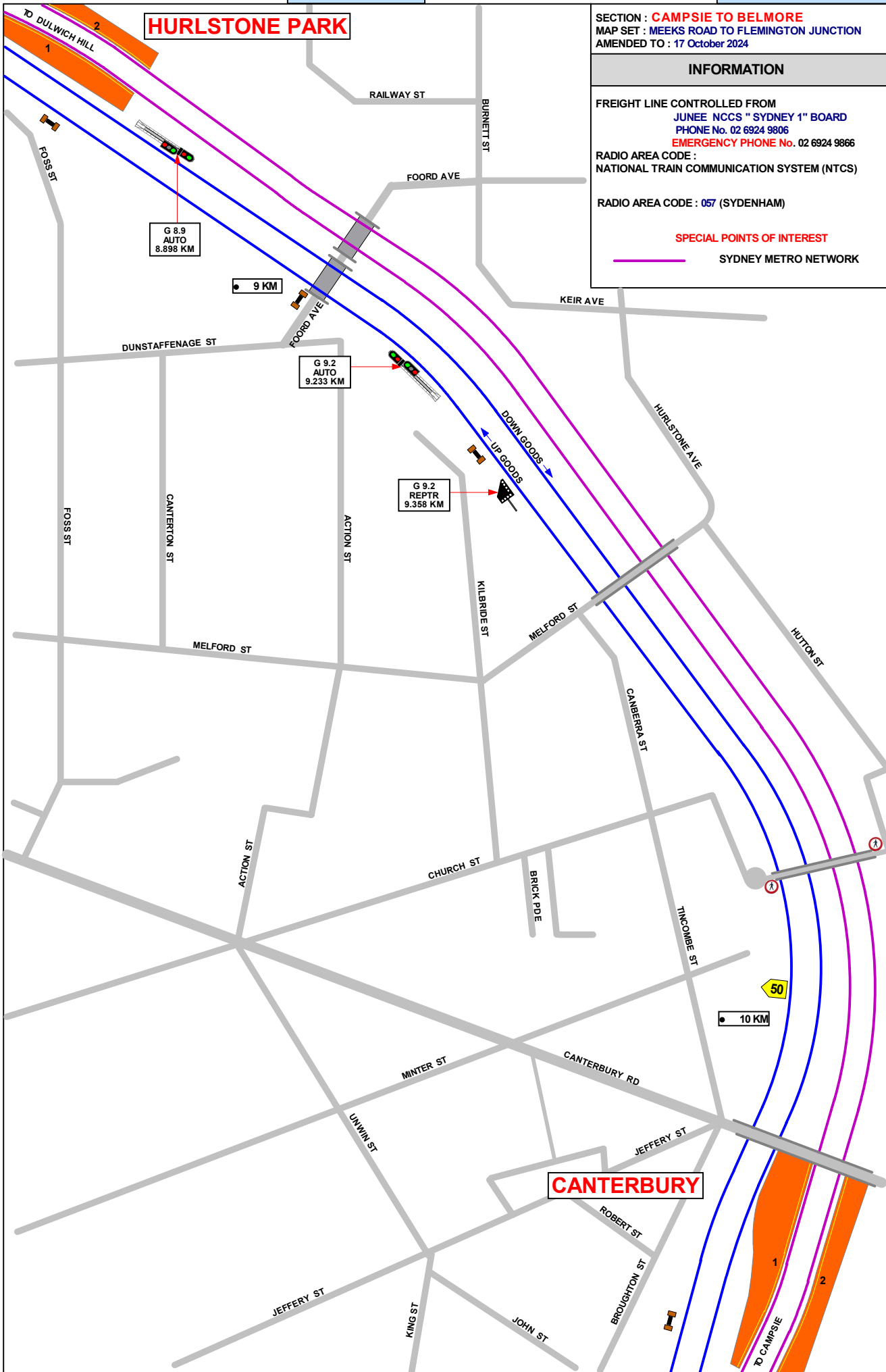
1 IN 170

1 IN 160

1 IN 132

1 IN 100

LEVEL





JOINS MAP MFL 05

**CANTERBURY**

SECTION : **CAMPSTIE TO BELMORE**  
 MAP SET : MEEKS ROAD TO FLEMINGTON JUNCTION  
 AMENDED TO : 17 October 2024

---

**INFORMATION**

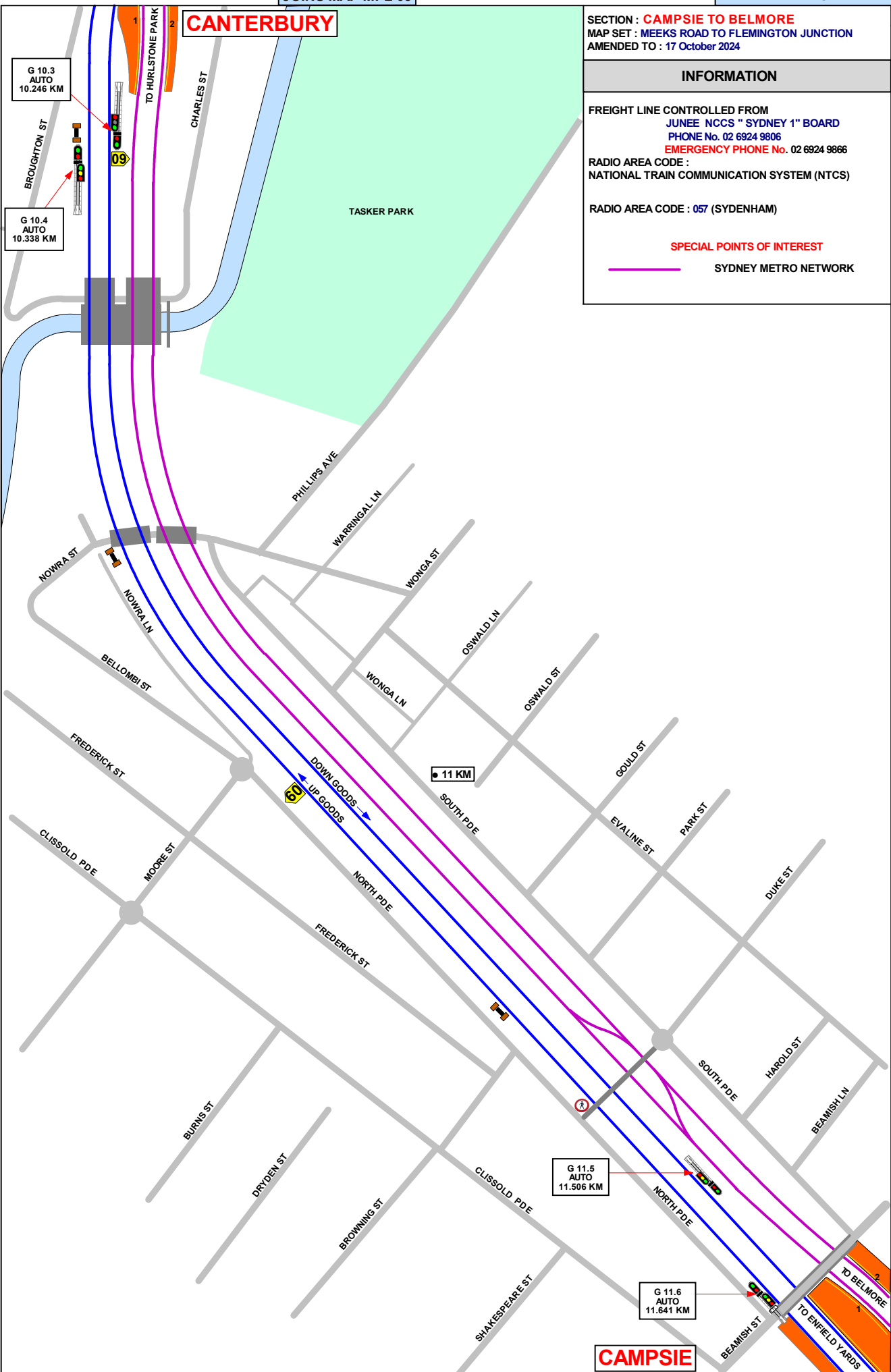
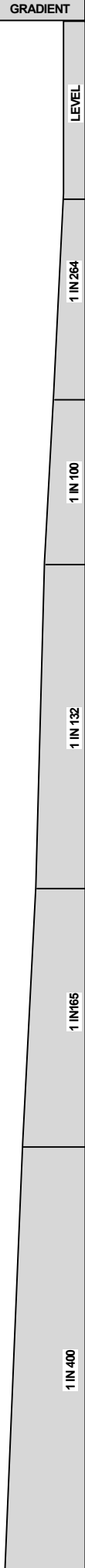
FREIGHT LINE CONTROLLED FROM  
 JUNEE NCCS "SYDNEY 1" BOARD  
 PHONE No. 02 6924 9806  
 EMERGENCY PHONE No. 02 6924 9866

RADIO AREA CODE :  
 NATIONAL TRAIN COMMUNICATION SYSTEM (NTCS)

RADIO AREA CODE : 057 (SYDENHAM)

**SPECIAL POINTS OF INTEREST**

— SYDNEY METRO NETWORK



JOINS MAP MFL 07

TO CANTERBURY

SECTION : **CAMPSIE TO BELMORE**  
MAP SET : MEEKS ROAD TO FLEMINGTON JUNCTION  
AMENDED TO : 17 October 2024

GRADIENT

**INFORMATION**

FREIGHT LINE CONTROLLED FROM  
JUNEE NCCS " SYDNEY 1" BOARD  
PHONE No. 02 6924 9806  
EMERGENCY PHONE No. 02 6924 9866  
RADIO AREA CODE :  
NATIONAL TRAIN COMMUNICATION SYSTEM (NTCS)  
  
RADIO AREA CODE : 057 (SYDENHAM)

**SPECIAL POINTS OF INTEREST**

— SYDNEY METRO NETWORK

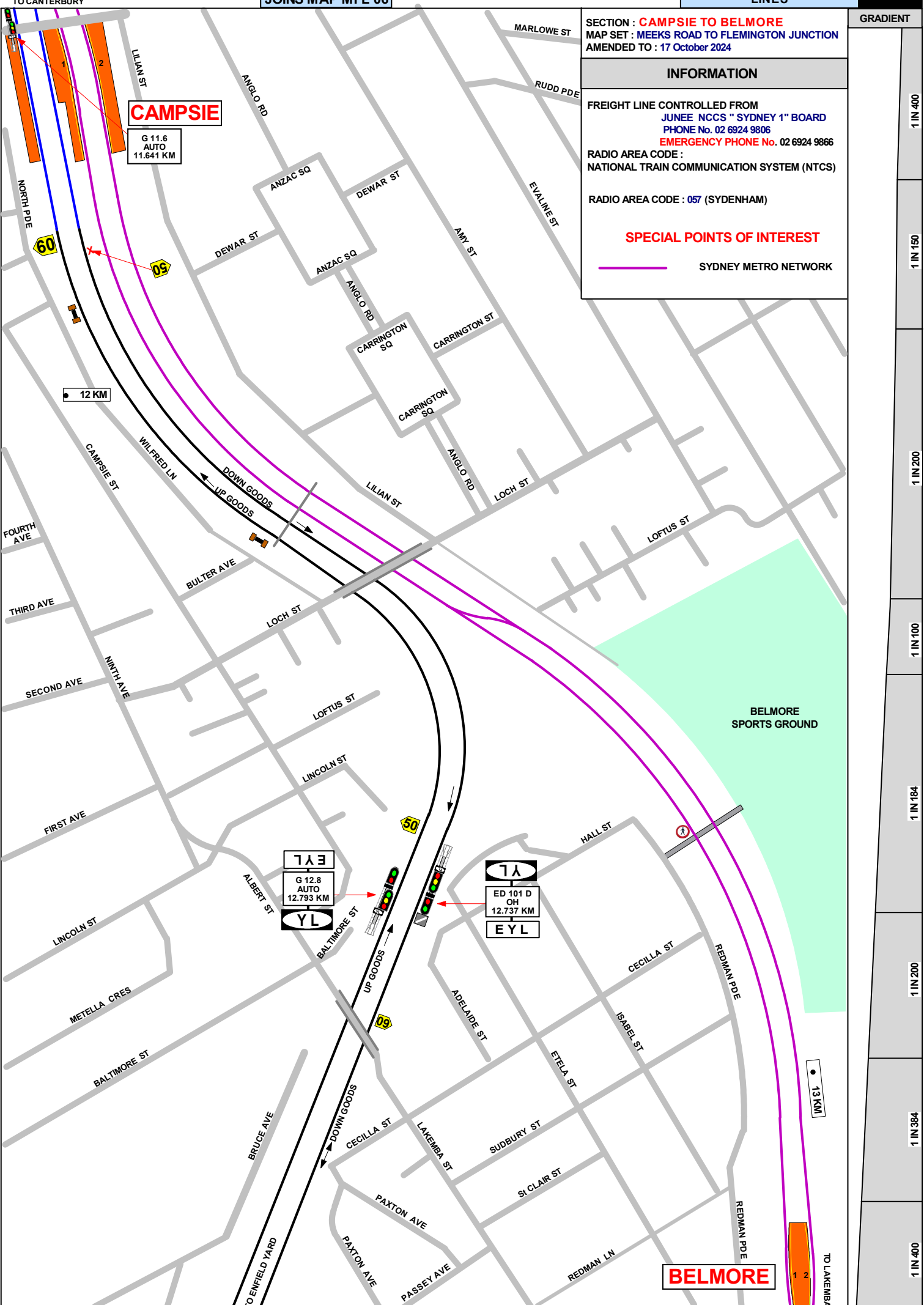
**CAMPSIE**

G 11.6  
AUTO  
11.641 KM

BELMORE  
SPORTS GROUND

**BELMORE**

TO LAKENBIA



1 IN 400

1 IN 150

1 IN 200

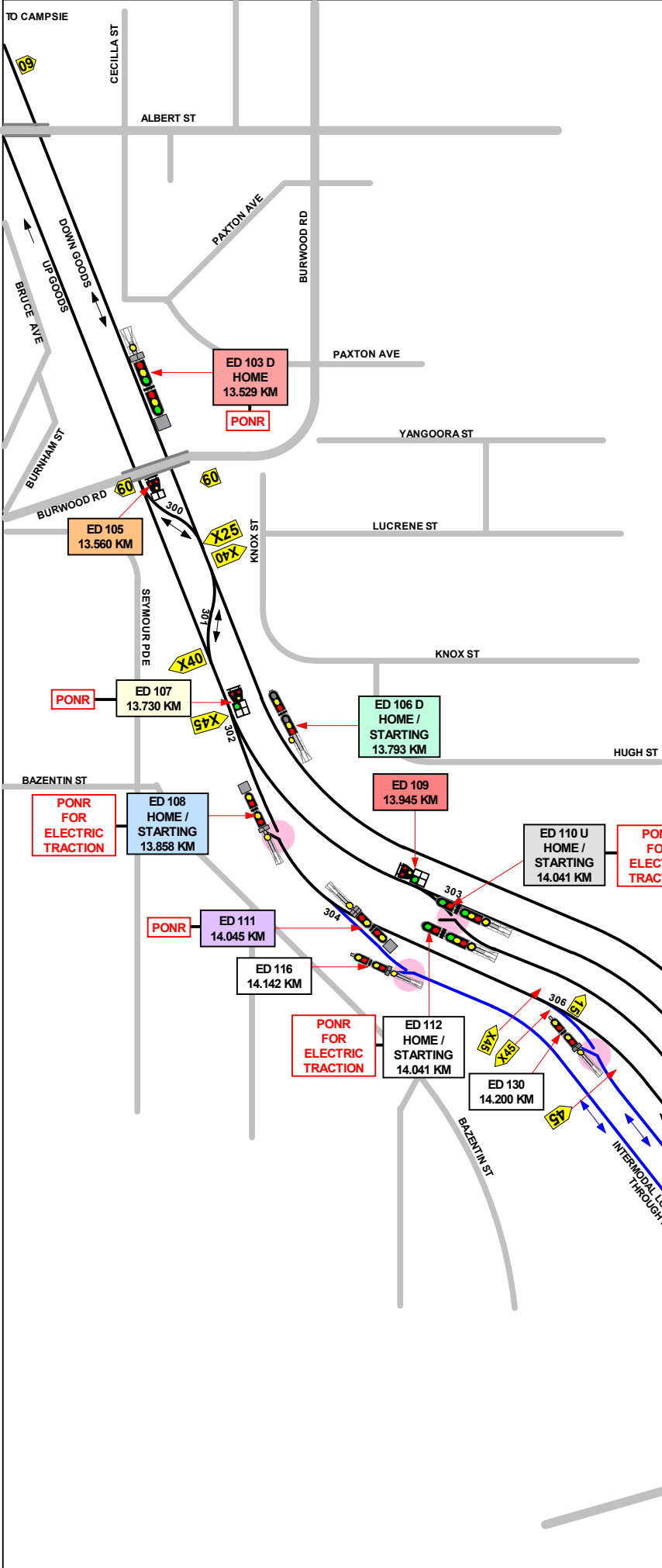
1 IN 100

1 IN 184

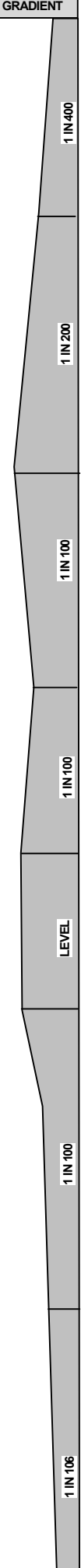
1 IN 200

1 IN 384

1 IN 400



SECTION : **CAMPSIE TO ENFIELD YARD**  
 MAP SET : **MEEKS ROAD TO FLEMINGTON JUNCTION**  
 AMENDED TO : 17 November 2015



**INFORMATION**

FREIGHT LINE CONTROLLED FROM  
 JUNEE NCCS " SYDNEY 1" BOARD  
 PHONE No. 02 6924 9806  
 EMERGENCY PHONE No. 02 6924 9866

RADIO AREA CODE :  
 NATIONAL TRAIN COMMUNICATION SYSTEM (NTCS)

**SPECIAL POINTS OF INTEREST**

**CAUTION**

POINT OF NO RETURN FOR ELECTRIC TRACTION  
 TO USE DOWN GOODS ROAD VIA 301 POINTS AT  
 ENFIELD SOUTH FOR TURN BACK MOVEMENTS ONLY  
 FREIGHT LINE IS NO LONGER CONNECTED TO THE  
 BANKSTOWN LINE AT CAMPSIE. ELECTRIC OVERHEAD  
 AVAILABLE ON DOWN GOODS LINE AS FAR AS COUNTRY  
 SIDE OF CAMPSIE PLATFORMS. WRONG ROAD MOVEMENTS AS  
 AS SIGNAL ED 101 EYL ON DOWN GOODS LINE

**PONR**

**POINTS OF NO RETURN**

SIGNAL No.	LOCATION	DESTINATIONS
ED 103 D	DOWN GOODS @ 13.529 km	ENFIELD YARD OR DELEC
ED 107	UP GOODS @ 13.730 km	ENFIELD YARD OR DELEC
ED 111	THROUGH ROAD 2 @13.908 km	ENFIELD YARD OR DELEC

SIGNAL	DESTINATION	INDICATION
ED 103 D	DOWN MAIN (M)	D
	DOWN MAIN (S)	DM
	UP MAIN (M)	U
	UP MAIN (S)	UM
	THROUGH ROAD 2 (M)	T2

SIGNAL	DESTINATION	INDICATION
ED 105	DOWN MAIN (S)	DM
	UP MAIN (S)	UM

SIGNAL	DESTINATION	INDICATION
ED 106 D	UP GOODS (M)	---
	UP GOODS (S)	UG

SIGNAL	DESTINATION	INDICATION
ED 107	UP MAIN (M)	GREEN LIGHT
	UP MAIN (S)	UM
	THROUGH ROAD 2 (M)	T2

SIGNAL	DESTINATION	INDICATION
ED 108	UP GOODS (M)	---
	UP GOODS (S)	UG

SIGNAL	DESTINATION	INDICATION
ED 109	UP MAIN (M)	GREEN LIGHT
	UP MAIN (S)	UM
	THROUGH ROAD 1 (M)	T1

SIGNAL	DESTINATION	INDICATION
ED 110 U	UP GOODS (M)	---
	UP GOODS (S)	UG

SIGNAL	DESTINATION	INDICATION
ED 111	THROUGH ROAD 2 (M)	T2
	STAGING ROAD 1 (M)	S
	STAGING ROAD 1 (S)	S1
	ILC (S)	LC

SIGNAL	DESTINATION	INDICATION
ED 112	UP GOODS (M)	---
	UP GOODS (S)	UG

SIGNAL	DESTINATION	INDICATION
ED 116	THROUGH ROAD 2 (M)	---
	THROUGH ROAD 2 (M)	---

SIGNAL	DESTINATION	INDICATION
ED 119	THROUGH ROAD 1 (S)	T1
	SOUTH ROAD 1 (S)	1

SIGNAL	DESTINATION	INDICATION
ED 125	SOUTH ROAD 6 (S)	6
	THROUGH ROAD 2 (S)	T2

SIGNAL	DESTINATION	INDICATION
ED 130	THROUGH ROAD 2 (M)	---
	THROUGH ROAD 2 (M)	---

SIGNAL	DESTINATION	INDICATION
ED 139 S	LOCO STORAGE (S)	LS
	THROUGH ROAD 1 (M)	T1
	NECK (S)	N

SIGNAL	DESTINATION	INDICATION
ED 148	SIDING	→
	SIDING	→
	THROUGH ROAD 1 (M)	T1

SIGNAL	DESTINATION	INDICATION
ED 153	NECK (S)	N
	THROUGH ROAD 2 (M)	---

SIGNAL	DESTINATION	INDICATION
ED 154	THROUGH ROAD 2 (S)	T2
	SIDING (S)	→
	SIDING (S)	→

SIGNAL	DESTINATION	INDICATION
ED 157	SIDING	↕
	SIDING	→
	THROUGH ROAD 2 (S)	T2

SIGNAL	DESTINATION	INDICATION
ED 159	THROUGH ROAD 2 (S)	---

SIGNAL	DESTINATION	INDICATION
ED 160	THROUGH ROAD 2 (S)	T2
	NECK (S)	N

SIGNAL	DESTINATION	INDICATION
ED 163	THROUGH ROAD 1 (S)	T1
	SIDING (S)	↕
	SIDING (S)	→

SIGNAL	DESTINATION	INDICATION
ED 164	NECK (S)	N
	THROUGH ROAD 1 (S)	T1

SIGNAL	DESTINATION	INDICATION
ED 175	LOCO STORAGE (S)	LS
	THROUGH ROAD 1 (M)	T1

SIGNAL	DESTINATION	INDICATION
ED 176	THROUGH ROAD 1 (S)	T1
	SIDING (S)	↕
	SIDING (S)	→

SIGNAL	DESTINATION	INDICATION
ED 501 S	STAGING ROAD 1 (M)	---
	STAGING ROAD 1 (S)	S1
	STAGING ROAD 2 (M)	---
	STAGING ROAD 2 (S)	S2

SIGNAL	DESTINATION	INDICATION
ED 502 S	STAGING ROAD 1 (M)	---
	STAGING ROAD 1 (S)	---

SIGNAL	DESTINATION	INDICATION
ED 504 S	STAGING ROAD 1 (M)	---
	STAGING ROAD 1 (S)	---

SECTION : **CAMPSIE TO ENFIELD YARD**  
 MAP SET : MEEKS ROAD TO FLEMINGTON JUNCTION  
 UPDATED TO : 20 JULY 2015

**INFORMATION**

FREIGHT LINE CONTROLLED FROM  
 JUNEE NCCS " SYDNEY 2" BOARD  
 PHONE No. 02 6924 9804  
**EMERGENCY PHONE No. 02 6924 9863**  
 RADIO AREA CODE :  
 NATIONAL TRAIN COMMUNICATION SYSTEM (NTCS)  
 RADIO AREA CODE : 038 ( STRATHFIELD )  
 : 895 ( ENFIELD )  
 YARD WORKING : TWO WAY RADIO ONLY

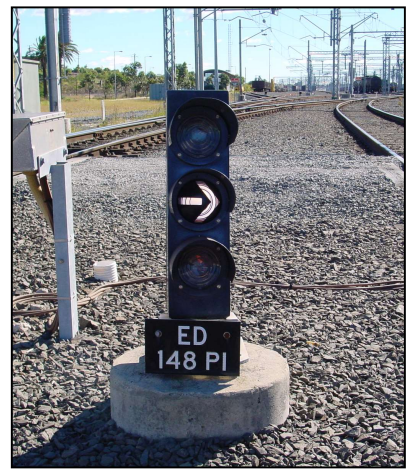
**SPECIAL POINTS OF INTEREST**  
**CAUTION**  
 POINT OF NO RETURN FOR ELECTRIC TRACTION  
 TO USE DOWN GOODS VIA 301 POINTS AT ENFIELD  
 SOUTH FOR TURN BACK MOVEMENTS ONLY  
 FREIGHT LINE IS NO LONGER CONNECTED TO  
 BANKSTOWN LINE AT CAMPSIE ELECTRIC  
 OVERHEAD AVAILABLE ON DOWN GOODS IN  
 THE UP DIRECTION TO SIGNAL SM 230 U AT  
 12.762 KM NOW A FIXED RED SIGNAL

**PONR**  
 POINTS OF NO RETURN

SIGNAL No.	LOCATION	DESTINATIONS
ED 103 D	DOWN GOODS AT 13.529 KM	ENFIELD YARD OR DELEC
ED 107	UP GOODS AT 13.730 KM	ENFIELD YARD OR DELEC
ED 111	THROUGH ROAD 2 AT 13. 908 KM	ENFIELD YARD OR DELEC



DELEC DEPARTURE ROAD (ON LEFT) TO GOODS LINE SIGNAL ED 116



POINT INDICATOR WITH ILLUMINATED ARROW

SECTION : ENFIELD YARD SOUTHERN END  
 MAP SET : MEEKS ROAD TO FLEMINGTON  
 VIA THE GOODS ROAD  
 PAGE : 3 OF 4  
 UPDATED TO : 30 September 2024

INFORMATION

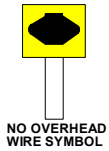
FREIGHT LINE CONTROLLED FROM  
 JUNEE NCCS " SYDNEY 2" BOARD  
 PHONE No. 02 6924 9804  
**EMERGENCY PHONE No. 02 6924 9864**  
 RADIO AREA CODE :  
 NATIONAL TRAIN COMMUNICATION SYSTEM (NTCS)  
 RADIO AREA CODE : 038 ( STRATHFIELD )  
 : 895 ( ENFIELD )  
 YARD WORKING : TWO WAY RADIO ONLY

GRADIENT

1 IN 168

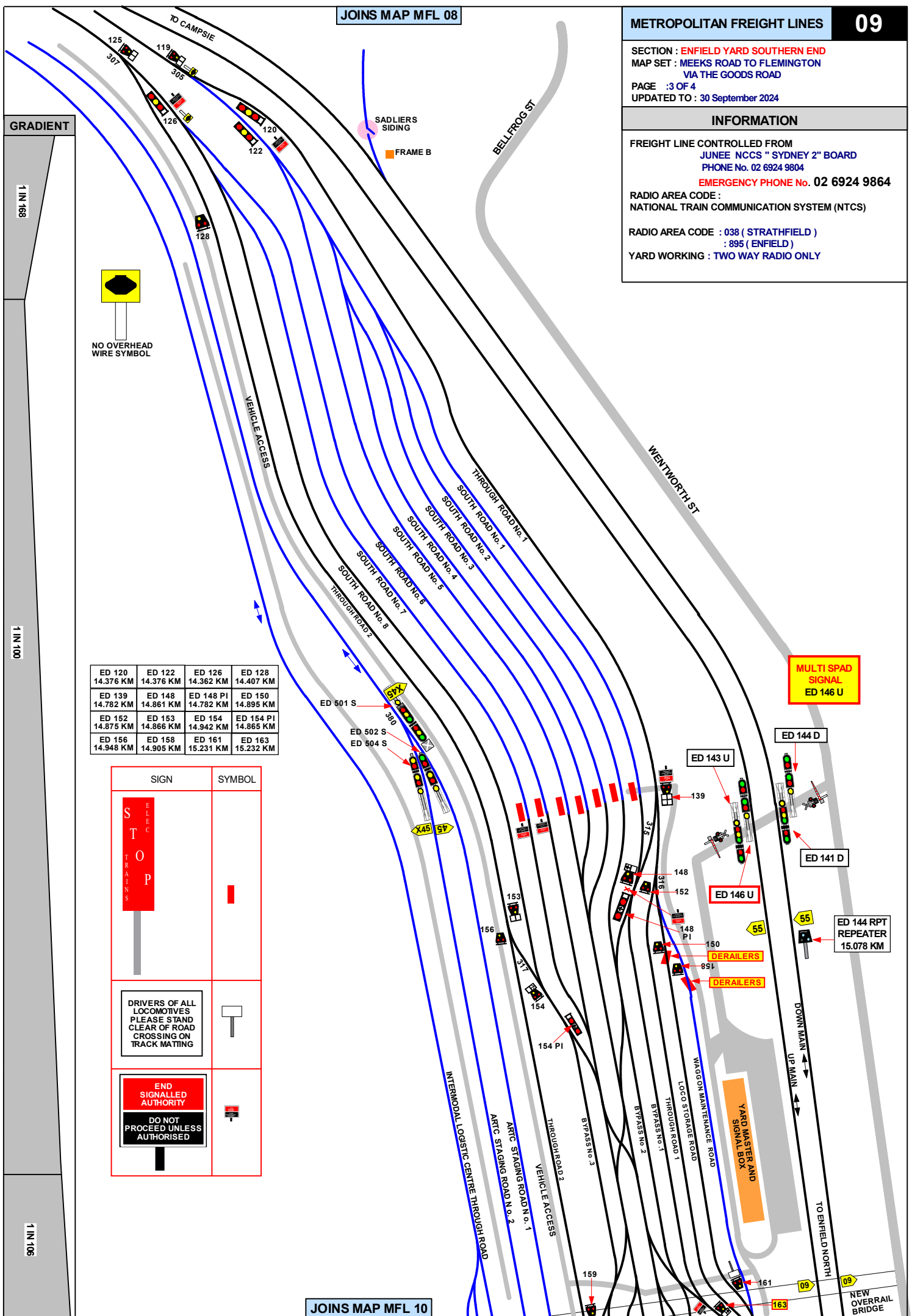
1 IN 100

1 IN 106



ED 120 14.376 KM	ED 122 14.376 KM	ED 126 14.362 KM	ED 128 14.407 KM
ED 139 14.782 KM	ED 148 14.861 KM	ED 148 PI 14.782 KM	ED 150 14.895 KM
ED 152 14.875 KM	ED 153 14.866 KM	ED 154 14.942 KM	ED 154 PI 14.865 KM
ED 156 14.948 KM	ED 158 14.905 KM	ED 161 15.231 KM	ED 163 15.232 KM

SIGN	SYMBOL





SECTION : ENFIELD YARD SOUTHERN END  
 MAP SET : MEEKS ROAD TO FLEMINGTON  
 VIA THE GOODS ROAD

PAGE : 2 OF 4  
 UPDATED TO : 18 June 2018

INFORMATION

CONTROLLED FROM :  
 ENFIELD CONTROL CENTRE

FREIGHT LINE CONTROLLED FROM:  
 JUNEE NCCS "SYDNEY 2" BOARD  
 PHONE No. 02 6924 9804  
**EMERGENCY PHONE No. 02 6924 9864**

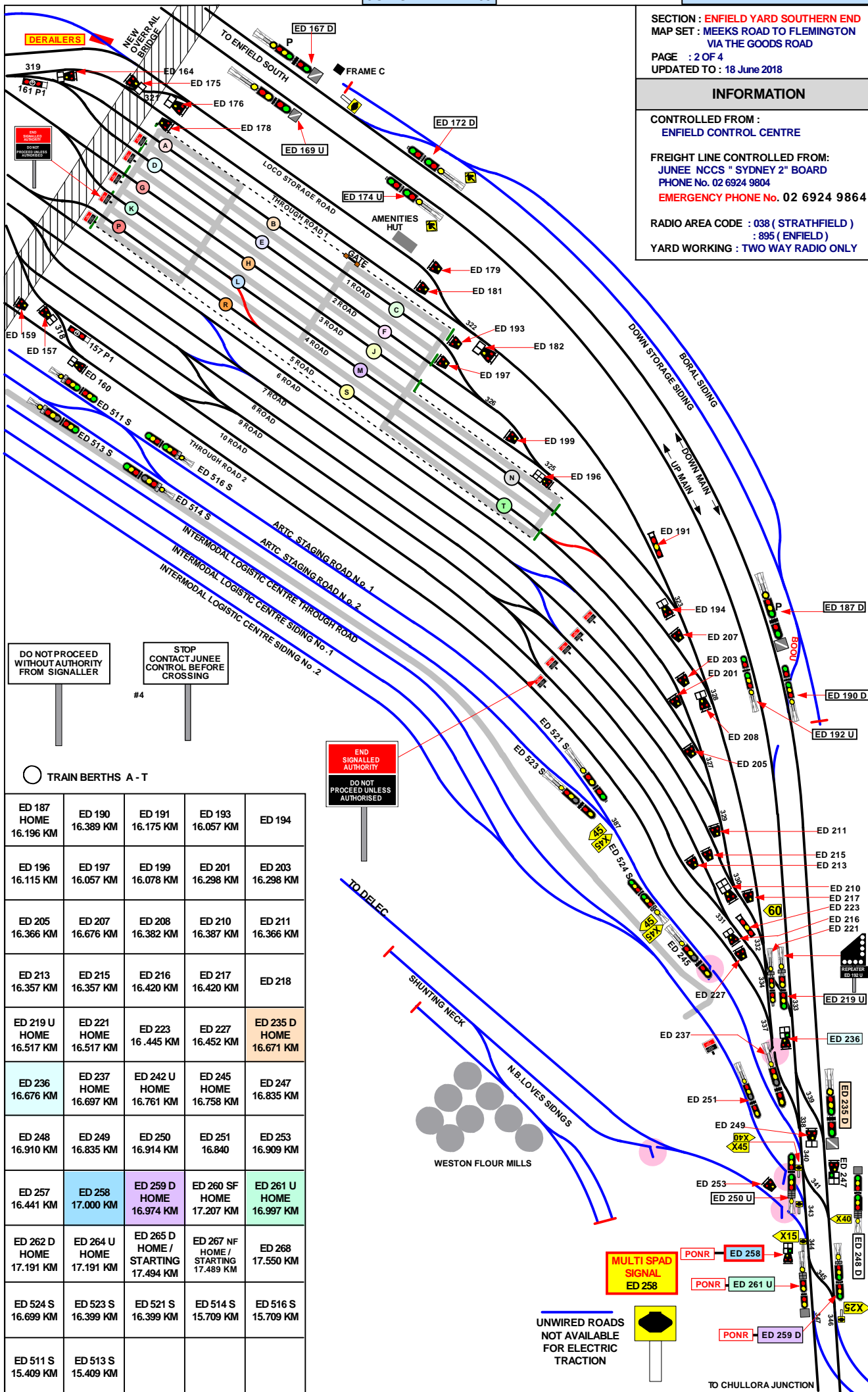
RADIO AREA CODE : 038 ( STRATHFIELD )  
 : 895 ( ENFIELD )  
 YARD WORKING : TWO WAY RADIO ONLY

GRADIENT

1 IN 100

LEVEL

1 IN 100



ED 187 HOME 16.196 KM	ED 190 16.389 KM	ED 191 16.175 KM	ED 193 16.057 KM	ED 194
ED 196 16.115 KM	ED 197 16.057 KM	ED 199 16.078 KM	ED 201 16.298 KM	ED 203 16.298 KM
ED 205 16.366 KM	ED 207 16.676 KM	ED 208 16.382 KM	ED 210 16.387 KM	ED 211 16.366 KM
ED 213 16.357 KM	ED 215 16.357 KM	ED 216 16.420 KM	ED 217 16.420 KM	ED 218
ED 219 U HOME 16.517 KM	ED 221 HOME 16.517 KM	ED 223 16.445 KM	ED 227 16.452 KM	ED 235 D HOME 16.671 KM
ED 236 16.676 KM	ED 237 HOME 16.697 KM	ED 242 U HOME 16.761 KM	ED 245 HOME 16.758 KM	ED 247 16.835 KM
ED 248 16.910 KM	ED 249 16.835 KM	ED 250 16.914 KM	ED 251 16.840	ED 253 16.909 KM
ED 257 16.441 KM	ED 258 17.000 KM	ED 259 D HOME / STARTING 16.974 KM	ED 260 SF HOME 17.207 KM	ED 261 U HOME 16.997 KM
ED 262 D HOME 17.191 KM	ED 264 U HOME 17.191 KM	ED 265 D HOME / STARTING 17.494 KM	ED 267 NF HOME / STARTING 17.489 KM	ED 268 17.550 KM
ED 524 S 16.699 KM	ED 523 S 16.399 KM	ED 521 S 16.399 KM	ED 514 S 15.709 KM	ED 516 S 15.709 KM
ED 511 S 15.409 KM	ED 513 S 15.409 KM			



PONR POINTS OF NO RETURN		
SIGNAL No.	LOCATION	DESTINATIONS
ED 236	UP MAIN AT 16.676 KM	ENFIELD YARD
ED 238	DOWN MAIN AT 16.750 KM	ENFIELD YARD
ED 259 D	DOWN MAIN AT 16.974 KM NEAR SOUTH JUNCTION	SEFTON PARK JUNCTION OR CHULLORA SIDINGS OR LIDCOMBE OR OLYMPIC PARK OR FLEMINGTON MARKETS
ED 258	UP MAIN AT 17.000 KM NEAR SOUTH JUNCTION	WESTON FLOUR MILLS SIDING OR ENFIELD YARD
ED 261 U	UP MAIN AT 16.997 KM NEAR SOUTH JUNCTION	SEFTON PARK JUNCTION OR CHULLORA SIDINGS OR LIDCOMBE OR OLYMPIC PARK OR FLEMINGTON MARKETS
ED 262 U	DOWN MAIN AT 17.191 KM AT SOUTH JUNCTION	WESTON FLOUR MILLS SIDING
ED 268	UP MAIN AT 17.550 KM AT NORTH JUNCTION	ENFIELD YARD WESTON MILLS SIDING OR CHULLORA SIDINGS OR SEFTON PARK JUNCTION

SIGNAL	DESTINATION	INDICATION
ED 182	THROUGH ROAD (S)	T1
	LOCO STORAGE ( S )	LS

SIGNAL	DESTINATION	INDICATION
ED 185	SHUNTING NECK	←
	DOWN MAIN ( S )	DM

SIGNAL	DESTINATION	INDICATION
ED 190 D	DOWN MAIN (M)	---
	DOWN MAIN (S)	DM
	BORAL SIDING (4D)	BS

SIGNAL	DESTINATION	INDICATION
ED 194	ROAD 3 ( S )	3
	THROUGH ROAD 1 ( S )	T1

SIGNAL	DESTINATION	INDICATION
ED 196	ROAD 3 (S)	3
	ROAD 2 (S)	2
	ROAD 1 (S)	1

SIGNAL	DESTINATION	INDICATION
ED 208	ROAD 4 ( S )	4
	THROUGH ROAD 1 ( S )	T1

SIGNAL	DESTINATION	INDICATION
ED 210	ROAD 8 (S)	8
	ROAD 7 (S)	7
	ROAD 6 (S)	6
	ROAD 5 (S)	5

SIGNAL	DESTINATION	INDICATION
ED 216	ROAD 10 ( S )	10
	ROAD 9 ( S )	9

SIGNAL	DESTINATION	INDICATION
ED 218	ROAD 5 ( S )	5
	THROUGH ROAD 1 ( S )	T1

SIGNAL	DESTINATION	INDICATION
ED 219	DOWN MAIN (M)	---
	DOWN MAIN (S)	DM
	UP MAIN (M)	---
	UP MAIN (S)	UM

SIGNAL	DESTINATION	INDICATION
ED 221	DOWN MAIN (M)	---
	DOWN MAIN (S)	DM
	THROUGH ROAD (S)	T1

SIGNAL	DESTINATION	INDICATION
ED 236	THROUGH ROAD (S)	T1
	UP MAIN (S)	GREEN LIGHT
	UP MAIN (S)	UM

SIGNAL	DESTINATION	INDICATION
ED 237	DOWN MAIN (M)	---
	UP MAIN (S)	---

SIGNAL	DESTINATION	INDICATION
ED 245	DOWN MAIN (M)	---
	UP MAIN (M)	---

SIGNAL	DESTINATION	INDICATION
ED 248 D	STAGING ROAD 1 (M)	S
	STAGING ROAD 1 (S)	S1
	THROUGH ROAD 2 (S)	T2
	ROAD 9 (S)	9
	THROUGH ROAD 1 (S)	T1
	UP MAIN (VIA 341 PTS R) (S)	U
	UP MAIN (VIA 341 PTS R) (S)	UM
	UP MAIN (VIA 339 PTS R) (S)	U
	UP MAIN (VIA 339 PTS R) (S)	UM
	DOWN MAIN (M)	D
DOWN MAIN (S)	DM	

SIGNAL	DESTINATION	INDICATION
ED 249	DOWN MAIN (S)	DM
	UP MAIN (S)	UP

SIGNAL	DESTINATION	INDICATION
ED 250 U	ILC (S)	LC
	STAGING ROAD 1 (M)	S
	STAGING ROAD 1 (S)	S1
	THROUGH ROAD 2 (S)	T2
	ROAD 9 (S)	9
	THROUGH ROAD 1 (S)	T1
	UP MAIN (M)	U
UP MAIN (S)	UM	

SIGNAL	DESTINATION	INDICATION
ED 251	UP MAIN (M)	---
	UP MAIN (S)	---

SIGNAL	DESTINATION	INDICATION
ED 258	DELEC (S)	DC
	UP MAIN (S)	UM
	UP MAIN (S)	GREEN LIGHT

SIGNAL	DESTINATION	INDICATION
ED 259 D	DOWN SOUTH FORK (M)	---
	DOWN SOUTH FORK (S)	SF
	DOWN MAIN (M)	---
	DOWN MAIN (S)	DM

SIGNAL	DESTINATION	INDICATION
ED 261 U	DOWN SOUTH FORK (M)	S
	DOWN SOUTH FORK (S)	SF
	DOWN MAIN (M)	M
	DOWN MAIN (S)	DM
UP MAIN (S)	UM	

SIGNAL	DESTINATION	INDICATION
ED 262 D	UP MAIN (S)	UM
	DOWN MAIN (M)	-
	DOWN MAIN (S)	DM

SECTION : ENFIELD TO CHULLORA NORTH JUNCTION  
 MAP SET : MEEKS ROAD TO FLEMINGTON JUNCTION  
 UPDATED TO : 18 June 2018

**INFORMATION**

FREIGHT LINE CONTROLLED FROM  
 JUNEE NCCS " SYDNEY 2" BOARD  
 PHONE No. 02 6924 9804  
**EMERGENCY PHONE No. 02 6924 9863**  
 RADIO AREA CODE :  
 NATIONAL TRAIN COMMUNICATION SYSTEM (NTCS)  
 RADIO AREA CODE : 038 ( STRATHFIELD )  
 : 895 ( ENFIELD )  
 YARD WORKING : TWO WAY RADIO ONLY

JOINS MAP MFL 12

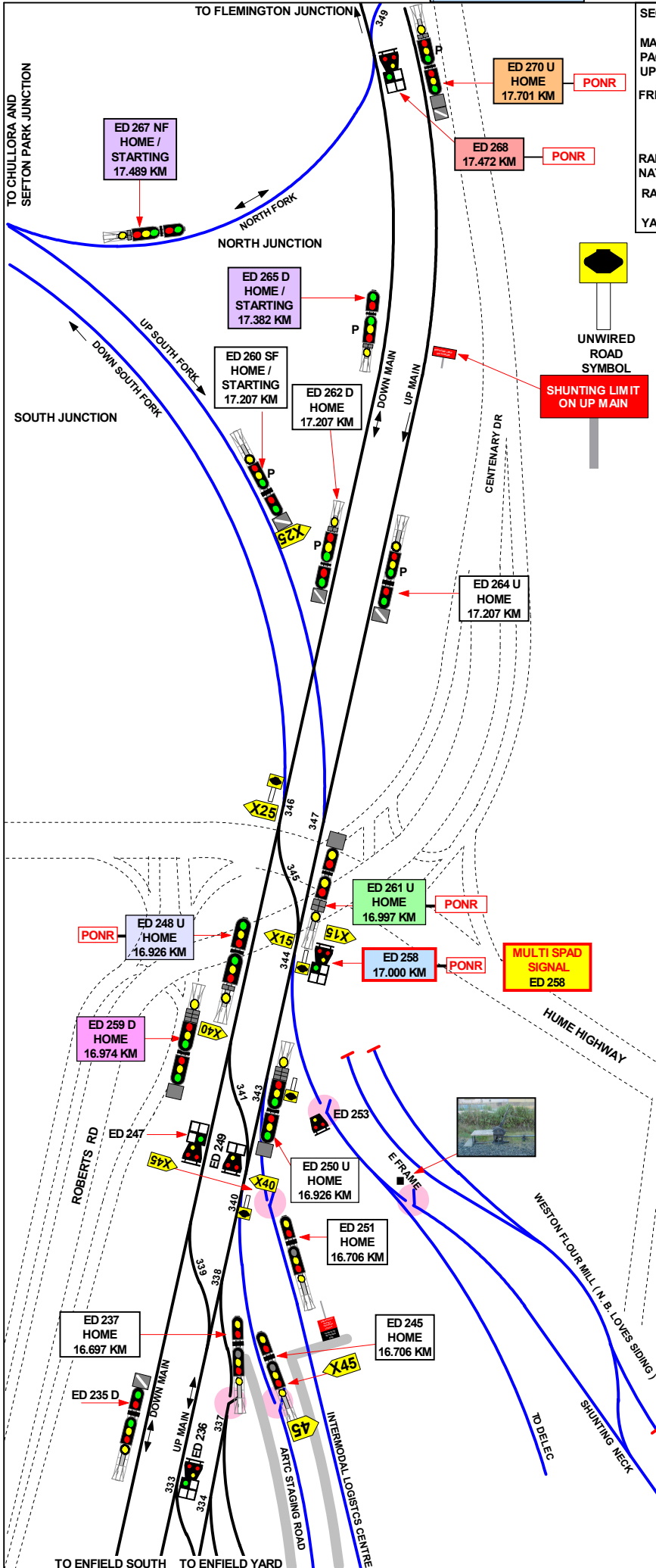
SECTION : DELEC ENFIELD LOCOMOTIVE DEPOT AND CHULLORA JUNCTION

MAP SET : YARDS  
PAGE: 2 OF 5  
UPDATED TO : 3 October 2023

FREIGHT LINE CONTROLLED FROM  
JUNEE NCCS " SYDNEY 2" BOARD  
PHONE No. 02 6924 9804  
EMERGENCY PHONE No. 02 6924 9863

RADIO AREA CODE :  
NATIONAL TRAIN COMMUNICATION SYSTEM (NTCS)  
RADIO AREA CODE : 038 ( STRATHFIELD )  
: 895 ( ENFIELD )  
YARD WORKING : TWO WAY RADIO ONLY

GRADIENT



UNWIRED ROAD SYMBOL

SHUNTING LIMIT ON UP MAIN

MULTI SPAD SIGNAL ED 258

SIGNAL	DESTINATION	INDICATION	
ED 270 U	UP MAIN (M)		
	UP MAIN (S)	UM	
	DOWN MAIN (M)	D	
	DOWN MAIN (S)	DM	
	NORTH FORK (S)	N	

SIGNAL	DESTINATION	INDICATION	
ED 268	DOWN MAIN (S)	DM	
	NORTH FORK (S)	NF	
	DOWN MAIN (M)	GREEN	LIGHT

SIGNAL	DESTINATION	INDICATION	
ED 265 D ED 267 NF	UP MAIN (M)	---	
	UP MAIN (S)	UM	
	DOWN MAIN (M)	---	
	DOWN MAIN (S)	DM	

SIGNAL	DESTINATION	INDICATION	
ED 260 SF ED 264 U	UP MAIN (M)	---	
	UP MAIN (S)	---	

SIGNAL	DESTINATION	INDICATION	
ED 261 U	DOWN SOUTH FORK (M)	S	
	DOWN SOUTH FORK (S)	SF	
	DOWN MAIN (M)	M	
	DOWN MAIN (S)	DM	
	UP MAIN (S)	UM	

SIGNAL	DESTINATION	INDICATION	
ED 248 U	DOWN SOUTH FORK (M)	---	
	DOWN SOUTH FORK (S)	SF	
	DOWN MAIN (M)	---	
	DOWN MAIN (S)	DM	

SIGNAL	DESTINATION	INDICATION	
ED 258	DELEC (S)	DC	
	UP MAIN (S)	UM	
	UP MAIN (S)	GREEN	LIGHT

SIGNAL	DESTINATION	INDICATION	
ED 251	UP MAIN (M)	---	
	UP MAIN (S)	---	

SIGNAL	DESTINATION	INDICATION	
ED 250 U	ILC (S)	LC	
	STAGING ROAD 1 (M)	S	
	STAGING ROAD 1 (S)	S1	
	THROUGH ROAD 2 (S)	T2	
	ROAD 9 (S)	9	
	THROUGH ROAD 1 (S)	T1	
	UP MAIN (M)	U	
UP MAIN (S)	UM		

SIGNAL	DESTINATION	INDICATION	
ED 249	DOWN MAIN (S)	DM	
	UP MAIN (S)	UP	

SIGNAL	DESTINATION	INDICATION	
ED 259 D	STAGING ROAD 1 (M)	S	
	STAGING ROAD 1 (S)	S1	
	THROUGH ROAD 2 (S)	T2	
	ROAD 9 (S)	9	
	THROUGH ROAD 1 (S)	T1	
	UP MAIN (VIA 341 PTS R) (S)	U	
	UP MAIN (VIA 341 PTS R) (S)	UM	
	UP MAIN (VIA 339 PTS R) (S)	U	
	UP MAIN (VIA 339 PTS R) (S)	UM	
	DOWN MAIN (M)	D	
DOWN MAIN (S)	DM		

1 IN 100

JOINS MAP MFL 10

JOINS MAP MFL 11

ED 264 U HOME 17.207 KM  
 ED 262 D HOME 17.207 KM  
 ED 268 17.472 KM  
 ED 270 U HOME 17.701 KM  
 ED 265 D HOME / STARTING 17.382 KM

SECTION : CHULLORA NORTH JUNCTION TO FLEMINGTON SOUTH JUNCTION  
 MAP SET : MEEKS ROAD TO FLEMINGTON JUNCTION  
 UPDATED TO : 30 June 2025

INFORMATION

FREIGHT LINE CONTROLLED FROM JUNE NCCS " SYDNEY 2" BOARD  
 PHONE No. 02 6924 9804  
**EMERGENCY PHONE No. 02 6924 9863**  
 RADIO AREA CODE : NATIONAL TRAIN COMMUNICATION SYSTEM (NTCS)  
 RADIO AREA CODE : 038 ( LIDCOMBE ) : 895 ( ENFIELD )

PONR

POINTS OF NO RETURN

SIGNAL No.	LOCATION	DESTINATIONS
ED 268	CHULLORA NORTH JUNCTION	TURN OUT FOR DOWN GOODS
ED 270 U	CHULLORA NORTH JUNCTION	TURN OUT FOR DOWN GOODS
ST 371 SJD	DOWN MAIN 19.807 KM	LIDCOMBE OR UP OR DOWN FLEMINGTON GOODS OR OLYMPIC PARK

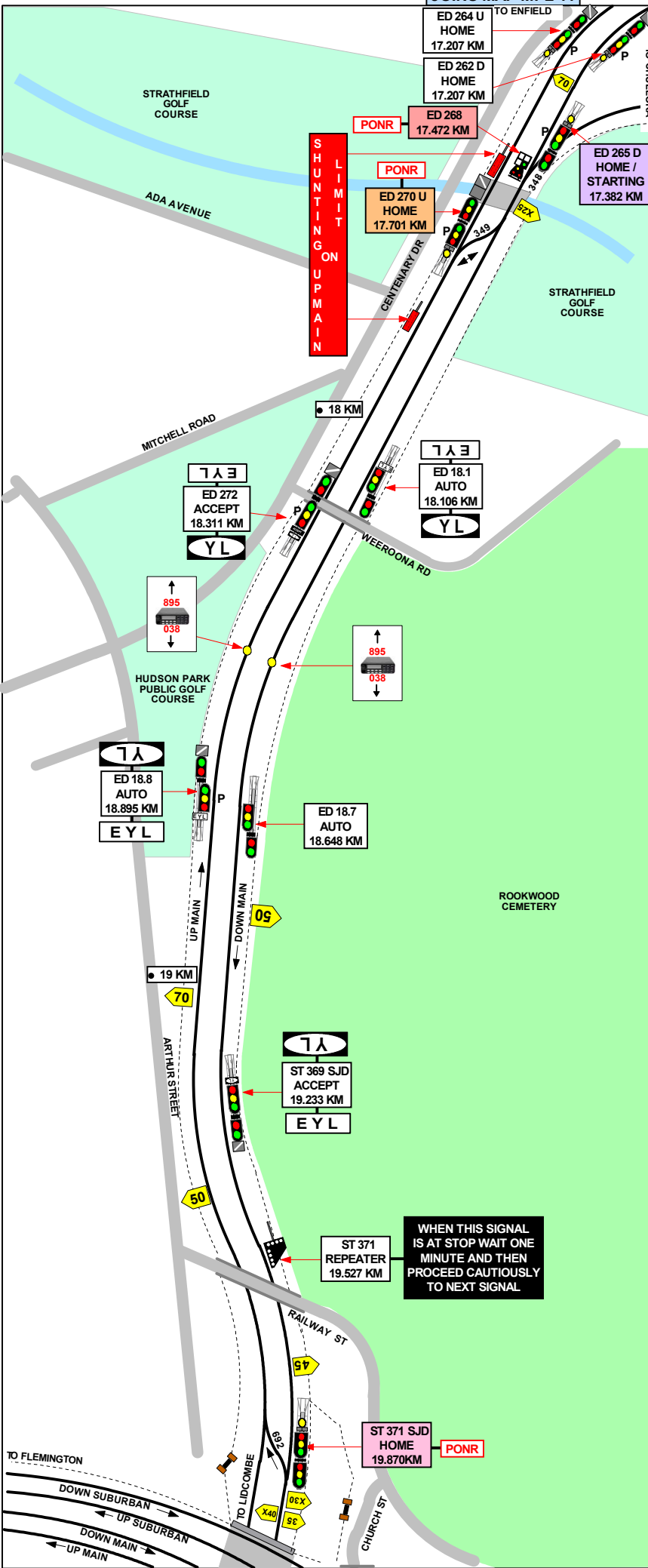
SIGNAL	DESTINATION	INDICATION
ED 262 D	UP MAIN (S)	UM
	DOWN MAIN (M)	-
	DOWN MAIN (S)	DM

SIGNAL	DESTINATION	INDICATION
ED 265 D ED 267 NF	UP MAIN (M)	---
	UP MAIN (S)	UM
	DOWN MAIN (M)	---
	DOWN MAIN (S)	DM

SIGNAL	DESTINATION	INDICATION
ED 268	DOWN MAIN (S)	DM
	NORTH FORK (S)	NF
	DOWN MAIN (M)	GREEN LIGHT

SIGNAL	DESTINATION	INDICATION
ED 270 U	UP MAIN (M)	UM
	UP MAIN (S)	UM
	DOWN MAIN (M)	D
	DOWN MAIN (S)	DM
	NORTH FORK (S)	N

SIGNAL	DESTINATION	INDICATION
ST 371 SJD	DOWN ENFIELD WEST FORK (M)	-
	DOWN ENFIELD WEST FORK (S)	WF
	DOWN ENFIELD EAST FORK (M)	-
	DOWN ENFIELD EAST FORK (S)	EF



WHEN THIS SIGNAL IS AT STOP WAIT ONE MINUTE AND THEN PROCEED CAUTIOUSLY TO NEXT SIGNAL

1 IN 100

1 IN 100

1 IN 100