

# DRIVERS ROUTE KNOWLEDGE DIAGRAMS

## OLYMPIC PARK LINE

FLEMINGTON JUNCTION

OLYMPIC PARK

**Effective Date:** April 2025

**Version:** 4.20

### Explanatory Notes:

Navigate to your area of interest via the station index or by using links created in Adobe bookmarks.

This document is approved for **route knowledge only**.

**Do not use these diagrams for any safety related purpose** without validating the information against a controlled source or in the field.

Information in these diagrams is uncontrolled.

Please report any updates to  
[gjs.support@transport.nsw.gov.au](mailto:gjs.support@transport.nsw.gov.au)



**Copyright:** Sydney Trains

**Ownership:** Geospatial Services

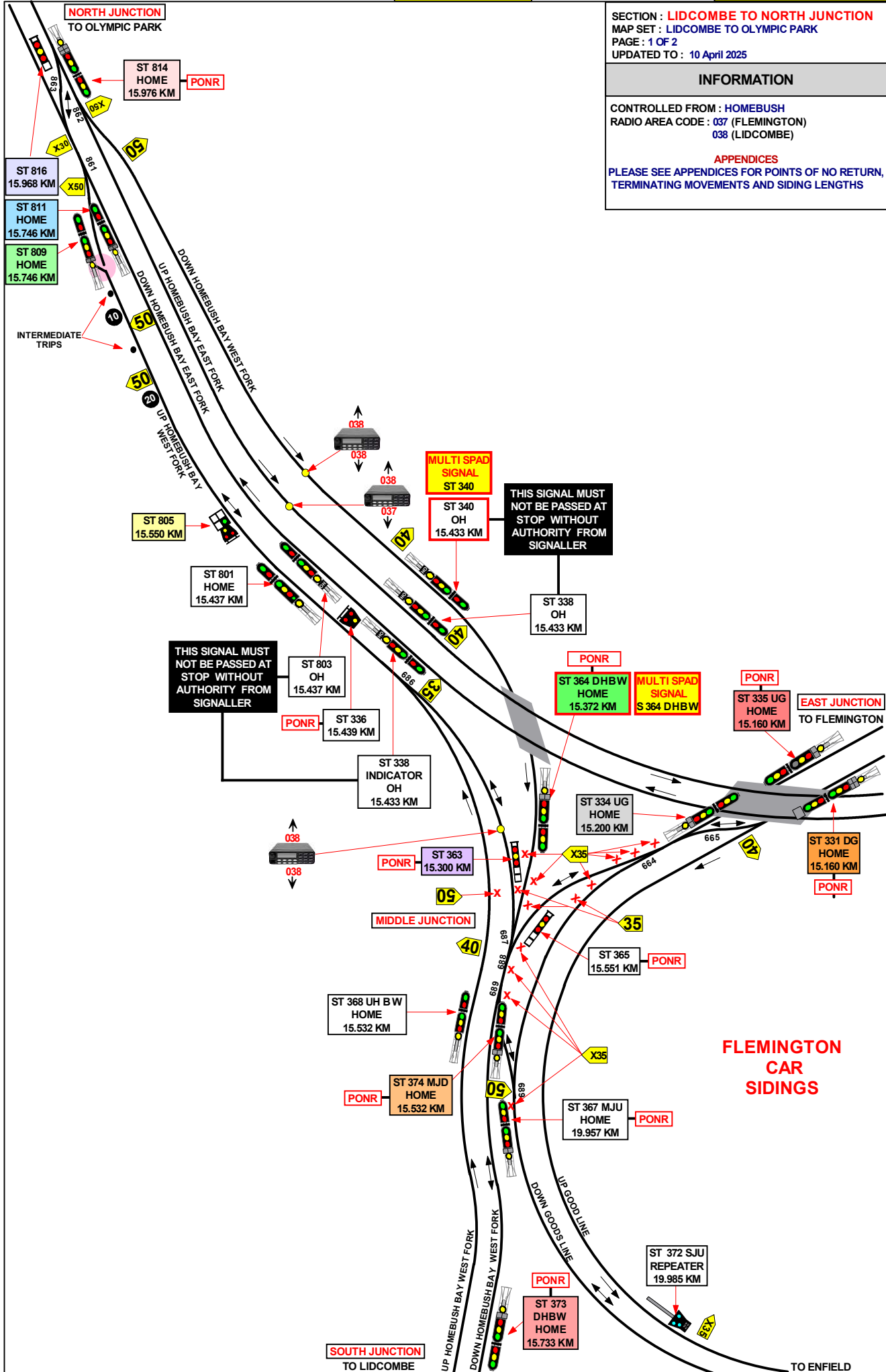
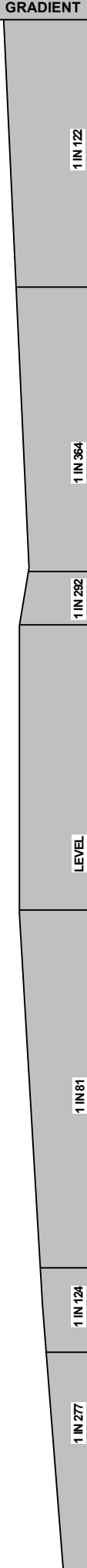
**Location:** CM Record No.D2015/566

SECTION : LIDCOMBE TO NORTH JUNCTION  
 MAP SET : LIDCOMBE TO OLYMPIC PARK  
 PAGE : 1 OF 2  
 UPDATED TO : 10 April 2025

**INFORMATION**

CONTROLLED FROM : HOME BUSH  
 RADIO AREA CODE : 037 (FLEMINGTON)  
 038 (LIDCOMBE)

**APPENDICES**  
 PLEASE SEE APPENDICES FOR POINTS OF NO RETURN,  
 TERMINATING MOVEMENTS AND SIDING LENGTHS



SECTION : **LIDCOMBE TO NORTH JUNCTION**  
 MAP SET : LIDCOMBE TO EMU PLAINS  
 PAGE : 2 OF 2  
 UPDATED TO :10 April 2025

GRADIENT

SIGNAL	DESTINATION	INDICATION
ST 373 DHBW	DOWN HOMEBUSH BAY WEST FORK (M)	-
	DOWN HOMEBUSH BAY WEST FORK (S)	DH
	SHUTTLE ROAD (M)	-
	SHUTTLE ROAD (S)	SR

**INFORMATION**  
**APPENDICES**  
 PLEASE SEE APPENDICES FOR POINTS OF NO RETURN,  
 TERMINATING MOVEMENTS AND SIDING LENGTHS

SIGNAL	DESTINATION	INDICATION
ST 374 MJD	UP HOMEBUSH BAY WEST FORK (M)	-
	UP HOMEBUSH BAY WEST FORK (S)	UH
	DOWN ENFIELD EAST FORK (M)	-
	DOWN ENFIELD EAST FORK (S)	EF

SIGNAL	DESTINATION	INDICATION
ST 331 DG	UP ENFIELD EAST FORK (M)	-
	UP ENFIELD EAST FORK (S)	UE
	DOWN ENFIELD EAST FORK (M)	E
	DOWN ENFIELD EAST FORK (S)	ED
	DOWN HOMEBUSH BAY WEST FORK (M)	H
DOWN HOMEBUSH BAY WEST FORK (S)	DH	

SIGNAL	DESTINATION	INDICATION
ST 367 MJU	UP HOMEBUSH BAY WEST FORK (M)	-
	UP HOMEBUSH BAY WEST FORK (S)	UH
	DOWN ENFIELD EAST FORK (M)	-
	DOWN ENFIELD EAST FORK (S)	EF

# BOOKED OUT OF USE

SIGNAL	DESTINATION	INDICATION
ST 805	DAIRY FARMERS SIDING (S)	DS #
	UP WEST FORK (S)	UW
		GREEN LIGHT

SIGNAL	DESTINATION	INDICATION
ST 378 SJD	UP MAIN (M)	-
	UP MAIN (S)	UM

SIGNAL	DESTINATION	INDICATION
ST 809	DOWN LOOP (M)	-
	DOWN LOOP (S)	DL
	UP LOOP (S)	UL

SIGNAL	DESTINATION	INDICATION
ST 363	DOWN ENFIELD EAST FORK (S)	EF
	DOWN HOMEBUSH BAY WEST FORK (S)	DH

SIGNAL	DESTINATION	INDICATION
ST 811	DOWN LOOP (M)	-
	DOWN LOOP (S)	DL
	UP LOOP (S)	UL

SIGNAL	DESTINATION	INDICATION
ST 365	DOWN ENFIELD EAST FORK (S)	EF
	DOWN HOMEBUSH BAY WEST FORK (S)	DH

SIGNAL	DESTINATION	INDICATION
ST 816	UP WEST FORK	UW

SIGNAL	DESTINATION	INDICATION
ST 334 UG	UP FLEMINGTON GOODS (M)	-
	UP FLEMINGTON GOODS (S)	UG
	DOWN FLEMINGTON GOODS (M)	-
	DOWN FLEMINGTON GOODS (S)	DG

SIGNAL	DESTINATION	INDICATION
ST 814	DOWN WEST FORK (M)	-
	DOWN WEST FORK (S)	DW
	UP EAST FORK (M)	-
	UP EAST FORK (S)	UE
	UP WEST FORK (S)	UW

SIGNAL	DESTINATION	INDICATION
ST 335 UG	DOWN ENFIELD EAST FORK (M)	-
	DOWN ENFIELD EAST FORK (S)	DE
	DOWN HOMEBUSH BAY WEST FORK (M)	-
	DOWN HOMEBUSH BAY WEST FORK (S)	DH

SIGNAL	DESTINATION	INDICATION
ST 364 DHBW	DOWN HOMEBUSH BAY WEST FORK (M)	-
	DOWN HOMEBUSH BAY WEST FORK (S)	DH
	DOWN ENFIELD EAST FORK (M)	-
	DOWN ENFIELD EAST FORK (S)	EF

HOMEBUSH BAY DOWN WEST FORK

1 IN 122

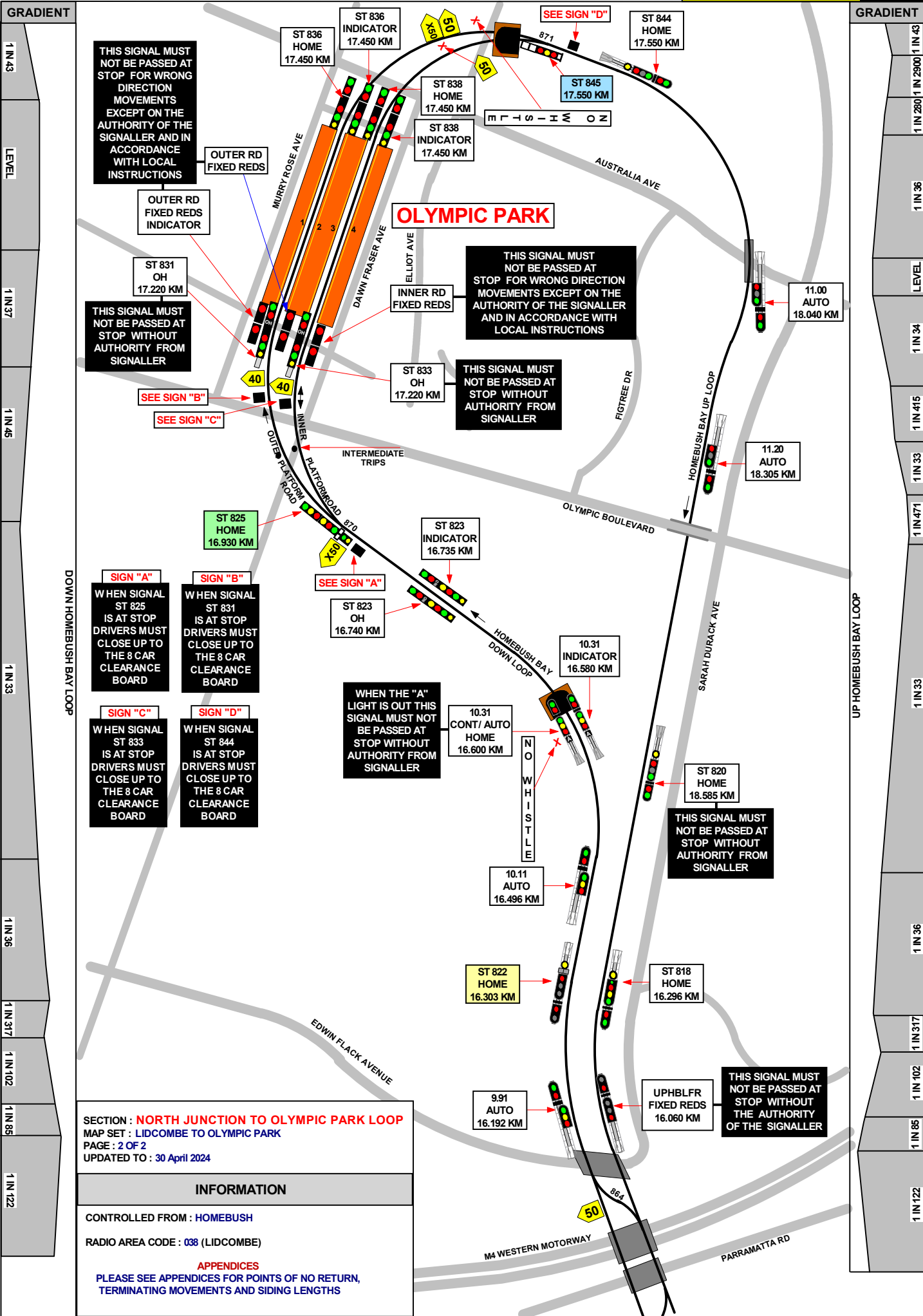
LEVEL

1 IN 48

1 IN 61

1 IN 122

1 IN 277



**THIS SIGNAL MUST NOT BE PASSED AT STOP FOR WRONG DIRECTION MOVEMENTS EXCEPT ON THE AUTHORITY OF THE SIGNALLER AND IN ACCORDANCE WITH LOCAL INSTRUCTIONS**

**THIS SIGNAL MUST NOT BE PASSED AT STOP WITHOUT AUTHORITY FROM SIGNALLER**

**THIS SIGNAL MUST NOT BE PASSED AT STOP FOR WRONG DIRECTION MOVEMENTS EXCEPT ON THE AUTHORITY OF THE SIGNALLER AND IN ACCORDANCE WITH LOCAL INSTRUCTIONS**

**THIS SIGNAL MUST NOT BE PASSED AT STOP WITHOUT AUTHORITY FROM SIGNALLER**

**WHEN THE "A" LIGHT IS OUT THIS SIGNAL MUST NOT BE PASSED AT STOP WITHOUT AUTHORITY FROM SIGNALLER**

**THIS SIGNAL MUST NOT BE PASSED AT STOP WITHOUT AUTHORITY FROM SIGNALLER**

**THIS SIGNAL MUST NOT BE PASSED AT STOP WITHOUT THE AUTHORITY OF THE SIGNALLER**

**SIGN "A"**  
WHEN SIGNAL ST 825 IS AT STOP DRIVERS MUST CLOSE UP TO THE 8 CAR CLEARANCE BOARD

**SIGN "B"**  
WHEN SIGNAL ST 831 IS AT STOP DRIVERS MUST CLOSE UP TO THE 8 CAR CLEARANCE BOARD

**SIGN "C"**  
WHEN SIGNAL ST 833 IS AT STOP DRIVERS MUST CLOSE UP TO THE 8 CAR CLEARANCE BOARD

**SIGN "D"**  
WHEN SIGNAL ST 844 IS AT STOP DRIVERS MUST CLOSE UP TO THE 8 CAR CLEARANCE BOARD

**SECTION : NORTH JUNCTION TO OLYMPIC PARK LOOP**  
MAP SET : LIDCOMBE TO OLYMPIC PARK  
PAGE : 2 OF 2  
UPDATED TO : 30 April 2024

**INFORMATION**

CONTROLLED FROM : HOMEBSH

RADIO AREA CODE : 038 (LIDCOMBE)

**APPENDICES**  
PLEASE SEE APPENDICES FOR POINTS OF NO RETURN, TERMINATING MOVEMENTS AND SIDING LENGTHS

SECTION : **NORTH JUNCTION TO OLYMPIC PARK LOOP**  
 MAP SET : LIDCOMBE TO EMU PLAINS  
 PAGE : 2 OF 2  
 UPDATED TO : 9 December 2024

**INFORMATION**

CONTROLLED FROM : **HOME BUSH**

RADIO AREA CODE : **038 (LIDCOMBE)**

**APPENDICES**

PLEASE SEE APPENDICES FOR POINTS OF NO RETURN,  
 TERMINATING MOVEMENTS AND SIDING LENGTHS

**INSTRUCTIONS FOR THE WORKING OF TRAINS DURING SPECIAL EVENTS**

DURING SPECIAL EVENTS, ALL TRAINS ARRIVING AT OLYMPIC PARK STATION WILL UNLOAD PASSENGERS ON EITHER No. 2 OR No. 3 PLATFORM, AND LOAD PASSENGERS FROM Nos. 1 AND 4 PLATFORMS.

WHEN A TRAIN ARRIVES ON EITHER THE INNER PLATFORM ROAD OR THE OUTER PLATFORM ROAD AND HAS COME TO A STAND AT No. 2 OR No. 3 PLATFORM, THE GUARD WILL OPEN THE DOORS TO ALLOW THE PASSENGERS TO ALIGHT FROM THE TRAIN.

AFTER ALL REQUIRED PASSENGERS HAVE ALIGHTED FROM THE TRAIN, THE GUARD MUST CLOSE THE DOORS FACING EITHER No. 2 OR No. 3 PLATFORM AND THEN OPEN THE DOORS FACING EITHER No. 1 OR No. 4 PLATFORM (DEPENDING ON WHICH ROAD THE TRAIN IS STANDING) TO ALLOW PASSENGERS TO JOIN THE TRAIN.

AS THE TRAIN IS ARRIVING AND DEPARTING, THE GUARD MUST LOOK ALONG EITHER No. 1 OR No. 4 PLATFORM TO ENSURE THAT NO PASSENGERS ARE TRYING TO GET ON THE TRAIN WHILE IT IS ARRIVING, UNLOADING PASSENGERS, OR DEPARTING.

**SHUNTING MOVEMENTS IN THE WRONG RUNNING DIRECTION**

FIXED RED STOP SIGNALS ARE PROVIDED TO LIMIT SHUNTING MOVEMENTS IN THE WRONG RUNNING DIRECTION ON THE UP HOME BUSH BAY LOOP AND AT THE UP END OF THE OLYMPIC PARK STATION PLATFORMS.

THESE SIGNALS ARE FITTED WITH INSTRUCTION PLATES THAT ARE INSCRIBED:  
 "THIS SIGNAL MUST NOT BE PASSED AT STOP WITHOUT THE AUTHORITY OF THE SIGNALLER".

SIGNAL	DESTINATION	INDICATION
ST 816	UP WEST FORK	UW

SIGNAL	DESTINATION	INDICATION
ST 814	DOWN WEST FORK (M)	-
	DOWN WEST FORK (S)	DW
	UP EAST FORK (M)	-
	UP EAST FORK (S)	UE
	UP WEST FORK (S)	UW

SIGNAL	DESTINATION	INDICATION
ST 822	UP HOME BUSH BAY LOOP (S)	UL
	DOWN HOME BUSH BAY LOOP (S)	DL

SIGNAL	DESTINATION	INDICATION
ST 845	INNER ROAD (S)	IR
	OUTER ROAD (S)	OR

SIGNAL	DESTINATION	INDICATION
ST 825	OUTER ROAD (M)	OR
	OUTER ROAD (S)	OR
	INNER ROAD (M)	IR
	INNER ROAD (S)	IR