

DRIVERS ROUTE KNOWLEDGE DIAGRAMS

AIRPORT LINE

CENTRAL

GREEN SQUARE

MASCOT

DOMESTIC AIRPORT

INTERNATIONAL AIRPORT

WOLLI CREEK

TURRELLA

Effective Date: February 2025

Version: 4.30

Explanatory Notes:

Navigate to your area of interest via the station index or by using links created in Adobe bookmarks.

This document is approved for **route knowledge only**.

Do not use these diagrams for any safety related purpose without validating the information against a controlled source or in the field.

Information in these diagrams is uncontrolled.

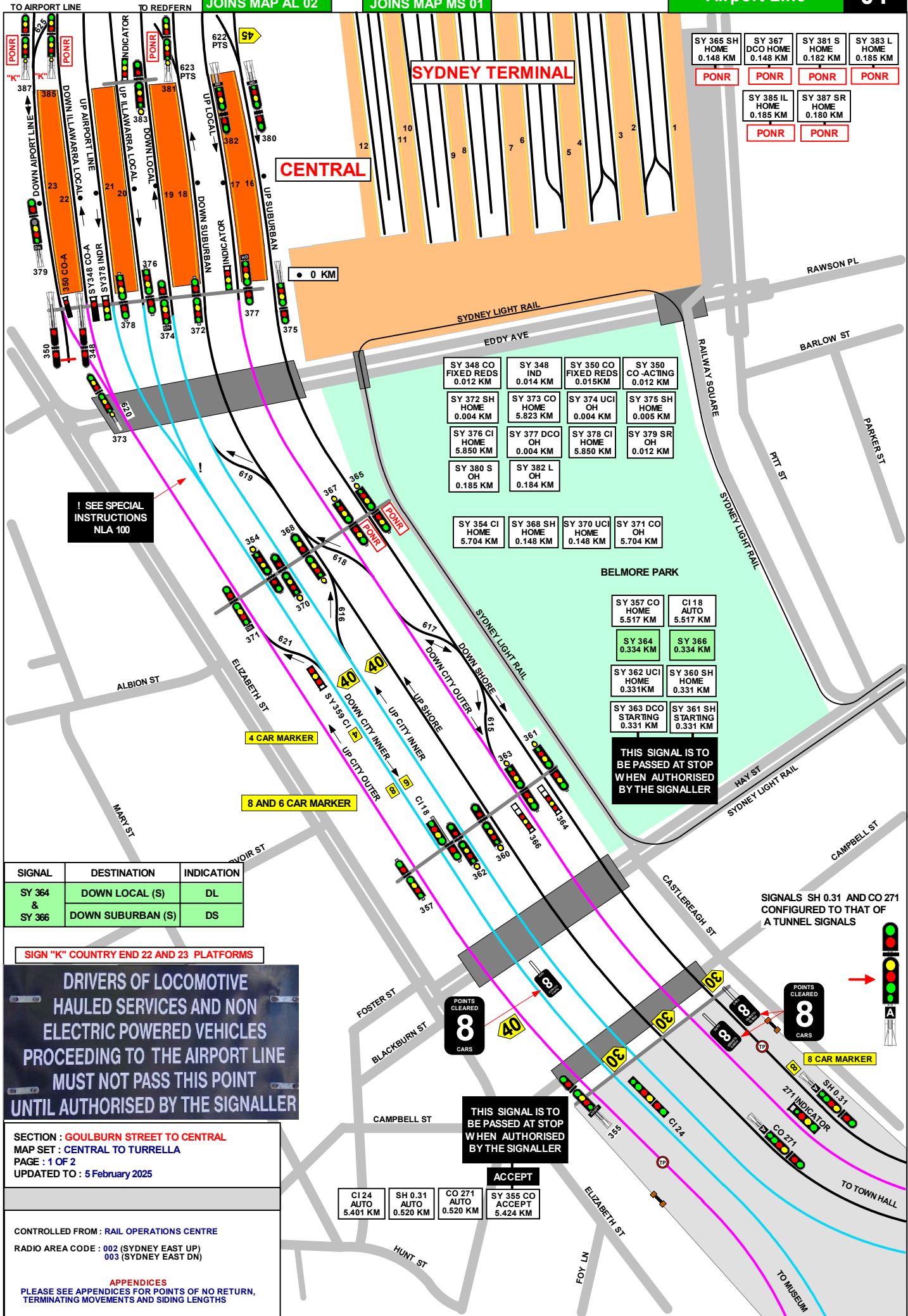
Please report any updates to
gis.support@transport.nsw.gov.au



Copyright: Sydney Trains

Ownership: Geospatial Services

Location: CM Record No.D2015/571



SY 365 SH HOME 0.148 KM	SY 367 DCO HOME 0.148 KM	SY 381 S HOME 0.182 KM	SY 383 L HOME 0.185 KM
PONR	PONR	PONR	PONR
SY 385 IL HOME 0.185 KM	SY 387 SR HOME 0.180 KM		
PONR	PONR		

SY 348 CO FIXED REDS 0.012 KM	SY 348 IND 0.014 KM	SY 350 CO FIXED REDS 0.015KM	SY 350 CO ACTING 0.012 KM
SY 372 SH HOME 0.004 KM	SY 373 CO HOME 5.823 KM	SY 374 UCI OH 0.004 KM	SY 375 SH HOME 0.005 KM
SY 376 CI HOME 5.850 KM	SY 377 DCO OH 0.004 KM	SY 378 CI HOME 5.850 KM	SY 379 SR OH 0.012 KM
SY 380 S OH 0.185 KM	SY 382 L OH 0.184 KM		
SY 354 CI HOME 5.704 KM	SY 368 SH HOME 0.148 KM	SY 370 UCI HOME 0.148 KM	SY 371 CO OH 5.704 KM

BELMORE PARK

SY 357 CO HOME 5.517 KM	C1 18 AUTO 5.517 KM
SY 364 0.334 KM	SY 366 0.334 KM
SY 362 UCI HOME 0.331KM	SY 360 SH HOME 0.331 KM
SY 363 DCO STARTING 0.331 KM	SY 361 SH STARTING 0.331 KM

SEE SPECIAL INSTRUCTIONS NLA 100

THIS SIGNAL IS TO BE PASSED AT STOP WHEN AUTHORISED BY THE SIGNALLER

THIS SIGNAL IS TO BE PASSED AT STOP WHEN AUTHORISED BY THE SIGNALLER

SIGNAL	DESTINATION	INDICATION
SY 364 & SY 366	DOWN LOCAL (S)	DL
	DOWN SUBURBAN (S)	DS

SIGN "K" COUNTRY END 22 AND 23 PLATFORMS

DRIVERS OF LOCOMOTIVE HAULED SERVICES AND NON ELECTRIC POWERED VEHICLES PROCEEDING TO THE AIRPORT LINE MUST NOT PASS THIS POINT UNTIL AUTHORISED BY THE SIGNALLER

SECTION : GOULBURN STREET TO CENTRAL
 MAP SET : CENTRAL TO TURRELLA
 PAGE : 1 OF 2
 UPDATED TO : 5 February 2025

CONTROLLED FROM : RAIL OPERATIONS CENTRE
 RADIO AREA CODE : 002 (SYDNEY EAST UP)
 003 (SYDNEY EAST DN)

APPENDICES
 PLEASE SEE APPENDICES FOR POINTS OF NO RETURN, TERMINATING MOVEMENTS AND SIDING LENGTHS

C1 24 AUTO 5.401 KM	SH 0.31 AUTO 0.520 KM	CO 271 AUTO 0.520 KM	SY 355 CO ACCEPT 5.424 KM
---------------------	-----------------------	----------------------	---------------------------

GRADIENT

LEVEL

1 IN 75

1 IN 40

CENTRAL
TURNBACK ARRANGEMENTS

DOWN CITY OUTER AND DOWN SHORE TRAINS MAY PROCEED FORWARD AND RETURN TO CENTRAL VIA No. 617, No. 618 or No. 619 CROSSOVER, PROVIDED THAT NO PORTION OF THE TRAIN HAS PASSED THE RESPECTIVE CAR MARKER RELATING TO THE TRAIN.

- WHEN THIS WORKING IS TO BE ARRANGED, THE SIGNALLER AT SYDNEY SHALL:
- IF THE TRAIN IS NOT TIMETABLED TO PERFORM THIS MOVEMENT, ARRANGE FOR THE CREW OF THE TRAIN TO BE ADVISED OF THE WORKING TO BE ADOPTED
- THEN SET THE ROUTE FOR THE TRAIN TO PROCEED CLEAR OF SIGNAL No. SY 364 or No. SY 366
- WHEN THE TRAIN IS CLEAR OF SIGNAL No. SY 364 or No. SY 366, SET THE ROUTE FOR THE TRAIN TO RETURN TO CENTRAL.

DOWN CITY INNER TRAINS MAY PROCEED FORWARD AND RETURN TO CENTRAL VIA No. 621 CROSSOVER, PROVIDED THAT NO PORTION OF THE TRAIN HAS PASSED THE RESPECTIVE CAR MARKER RELATING TO THE TRAIN.

- WHEN THIS WORKING IS TO BE ARRANGED, THE SIGNALLER AT SYDNEY SHALL:
- IF THE TRAIN IS NOT TIMETABLED TO PERFORM THIS MOVEMENT, ARRANGE FOR THE CREW OF THE TRAIN TO BE ADVISED OF THE WORKING TO BE ADOPTED
- THEN SET THE ROUTE FOR THE TRAIN TO PROCEED CLEAR OF SIGNAL No. SY 359
- WHEN THE TRAIN IS CLEAR OF SIGNAL No. SY 359, SET THE ROUTE FOR THE TRAIN TO RETURN TO CENTRAL.

SECTION : **GOULBURN STREET TO CENTRAL**
MAP SET : **CENTRAL TO TURRELLA**
PAGE : 2 OF 2
UPDATED TO : 8 April 2024

INFORMATION

CONTROLLED FROM : **RAIL OPERATIONS CENTRE**

RADIO AREA CODE : **002** (SYDNEY EAST UP)
003 (SYDNEY EAST DN)

APPENDICES
PLEASE SEE APPENDICES FOR POINTS OF NO RETURN, TERMINATING MOVEMENTS AND SIDING LENGTHS

CENTRAL
TIMING MARKER SIGNS

FOUR TIMING MARKER SIGNS, EACH WITH A YELLOW REFLECTIVE LETTER ' T ' DISPLAYED ON A BLACK BACKGROUND, ARE PROVIDED IN THE CENTRAL FLYOVER AREA WHERE THE TIMING SECTIONS ARE UNUSUALLY SHORT.

THEY ARE LOCATED AS FOLLOWS:

LINE	MARKER LOCATION
DOWN LOCAL	23 METRES IN APPROACH TO SIGNAL No. SY 397 L
UP LOCAL	16 METRES IN APPROACH TO SIGNAL No. SY 394 L
UP ILLAWARRA LOCAL	36 METRES IN APPROACH TO SIGNAL No. SY 388 IL, AND 16 METRES IN APPROACH TO SIGNAL No. SY 396 IL

A TRAIN APPROACHING ANY OF THESE SIGNALS AND SHOWING A LOW SPEED OR MEDIUM CAUTION INDICATION SHALL BE DRAWN PAST THE ' T ' MARKER SIGN, OTHERWISE THE TIMING WILL NOT COMMENCE AND THE TRAIN STOP WILL NOT CLEAR.

WRONG DIRECTION TRAIN MOVEMENTS IN THE SYDNEY UNDERGROUND

WHEN TRAINS ARE DELAYED IN THE UNDERGROUND AND CANNOT BE WORKED IN THE RIGHT RUNNING DIRECTION, THE YARD WORKING IN THIS UNIT MAY BE AUTHORISED BY THE TRAIN CONTROLLER TO ALLOW TRAINS TO BE MOVED OUT OF THE TUNNELS

LIMITS OF THE SYDNEY UNDERGROUND AREA

LINE TITLE	FROM	TO
CITY CIRCLE - INNER ROAD	No. 624 POINTS AT CENTRAL	No. 616 POINTS AT CENTRAL
CITY CIRCLE - OUTER ROAD	No. 622 POINTS AT CENTRAL	No. 625 POINTS AT CENTRAL
DOWN NORTH SHORE LINE	No. 622 POINTS AT CENTRAL	No. 612 POINTS AT WYNYARD
UP NORTH SHORE LINE	No. 612 POINTS AT WYNYARD	No. 623 POINTS AT CENTRAL

ALL TRAIN MOVEMENTS WILL BE CONTROLLED BY THE SIGNALLER AT SYDNEY SIGNAL BOX WHO SHALL LIAISE WITH THE TRAIN CONTROLLER TO CO-ORDINATE THE MOVEMENTS

THE DRIVER SHALL ALWAYS CHANGE ENDS AND DRIVE FROM THE LEADING DRIVERS COMPARTMENT IN THE DIRECTION OF TRAVEL. BEFORE CHANGING ENDS, THE DRIVER SHALL CHANGE THE MARKER LIGHTS TO RED. WHERE PROVIDED AND WHERE POSSIBLE, THE DRIVER SHALL ALSO LATCH UP THE TRIP. AFTER CHANGING ENDS, THE DRIVER SHALL CHANGE THE TAIL LIGHTS TO SHOW WHITE MARKER LIGHTS IN THE DIRECTION OF TRAVEL BEFORE MOVING THE TRAIN

IF FOR SOME REASON IT IS NOT POSSIBLE FOR THE DRIVER TO CHANGE ENDS AND DRIVE FROM THE LEADING COMPARTMENT IN THE DIRECTION OF TRAVEL, ANOTHER TRAIN SHALL BE BROUGHT ONTO THE TRAIN, THE TRAINS AMALGAMATED, AND THEN DRIVEN AS ONE TRAIN FROM THE LEADING CAB IN THE DIRECTION OF TRAVEL

THE DRIVER SHALL BE INSTRUCTED TO PROCEED TO THE FIRST PLATFORM IN THE WRONG RUNNING DIRECTION ONLY WHEN THE LINE IS UNOCCUPIED TO THE FIRST PLATFORM AND THE PLATFORM IS UNOCCUPIED. WHEN THERE IS NO ALTERNATIVE, TRAINS MAY BE BROUGHT BACK TO A PLATFORM THAT IS OCCUPIED AND THEN AMALGAMATED TO ALLOW PASSENGERS TO WALK THROUGH AND ALIGHT AT THE PLATFORM

WHEN IT IS NECESSARY FOR A TRAIN TO PROCEED BEYOND THE FIRST PLATFORM IN THE WRONG DIRECTION, THE SAME PROCESS FOR MOVING THE TRAIN SHALL BE REPEATED BETWEEN THE SIGNALLER AND THE DRIVER. THE LINE SHALL BE UNOCCUPIED TO THE NEXT PLATFORM AND THE TRAIN SHALL ONLY PROCEED WHEN AUTHORISED BY THE SIGNALLER

WHEN THE DRIVER IS REQUIRED TO CARRY OUT AN UNSIGNALLED MOVEMENT, THE DRIVER SHALL NOT ALLOW THE SPEED OF THE TRAIN TO EXCEED 10 KM/H

IF A TRAIN CANNOT TRAVEL IN THE WRONG RUNNING DIRECTION OWING TO LOSS OF TRACTION, THE DRIVER SHALL INFORM THE SIGNALLER SO THAT ALTERNATIVE ARRANGEMENTS CAN BE MADE

SECTION : CENTRAL TO AIRPORT PORTAL

CENTRAL TO REDFERN

MAP SET : CENTRAL TO TURRELLA

PAGE : 1 OF 4

UPDATED TO : 8 April 2024

APPENDICES

PLEASE SEE APPENDICES FOR POINTS OF NO RETURN, TERMINATING MOVEMENTS AND SIDING LENGTHS

CENTRAL

DRIVERS OF LOCOMOTIVE - HAULED SERVICES AND NON - ELECTRIC POWERED VEHICLES PROCEEDING TO THE AIRPORT LINE SHALL NOT PASS THIS POINT UNTIL AUTHORISED BY THE SIGNALLER

MULTI SPAD SIGNAL SY 391 IL

THIS SIGNAL MUST NOT BE PASSED AT STOP WITHOUT AUTHORITY FROM SIGNALLER

THIS SIGNAL MUST NOT BE PASSED AT STOP WITHOUT AUTHORITY FROM SIGNALLER

THIS SIGNAL MUST NOT BE PASSED AT STOP WITHOUT AUTHORITY FROM SIGNALLER

THIS SIGNAL MUST NOT BE PASSED AT STOP WITHOUT AUTHORITY FROM SIGNALLER

THIS SIGNAL MUST NOT BE PASSED AT STOP WITHOUT AUTHORITY FROM SIGNALLER

JOINS MAP NSR 03

- SY 380 S OH 0.185 KM
- SY 384 S HOME 0.260 KM
- R 384 REPEATER 0.261 KM
- SY 392 S OH 0.381 KM
- SY 395 S LOWER LEVEL OH 0.381 KM

- PONR
- SY 387 SR HOME 0.180 KM
- SY 385 IL HOME 0.181 KM
- PONR
- SY 391 IL HOME 0.340 KM
- SY 352 SR HOME 0.438 KM
- SY 393 SR OH 0.434 KM

- R 403 LOWER LEVEL REPEATER 0.542 KM
- SY 403 S LOWER LEVEL HOME 0.541 KM
- SY 400 S HOME 0.612 KM
- R 407 LOWER LEVEL REPEATER 0.661 KM

- SY 399 IL HOME 0.490 KM
- SY 422 SR OH 0.660 KM

- 116 0.741 KM
- 115 0.742 KM
- 117 0.740 KM

- SY 122 HOME 0.853 KM
- SY 126 M HOME 1.003 KM
- SY 127 UM HOME 0.998 KM
- R126 REPEATER 1.006 KM

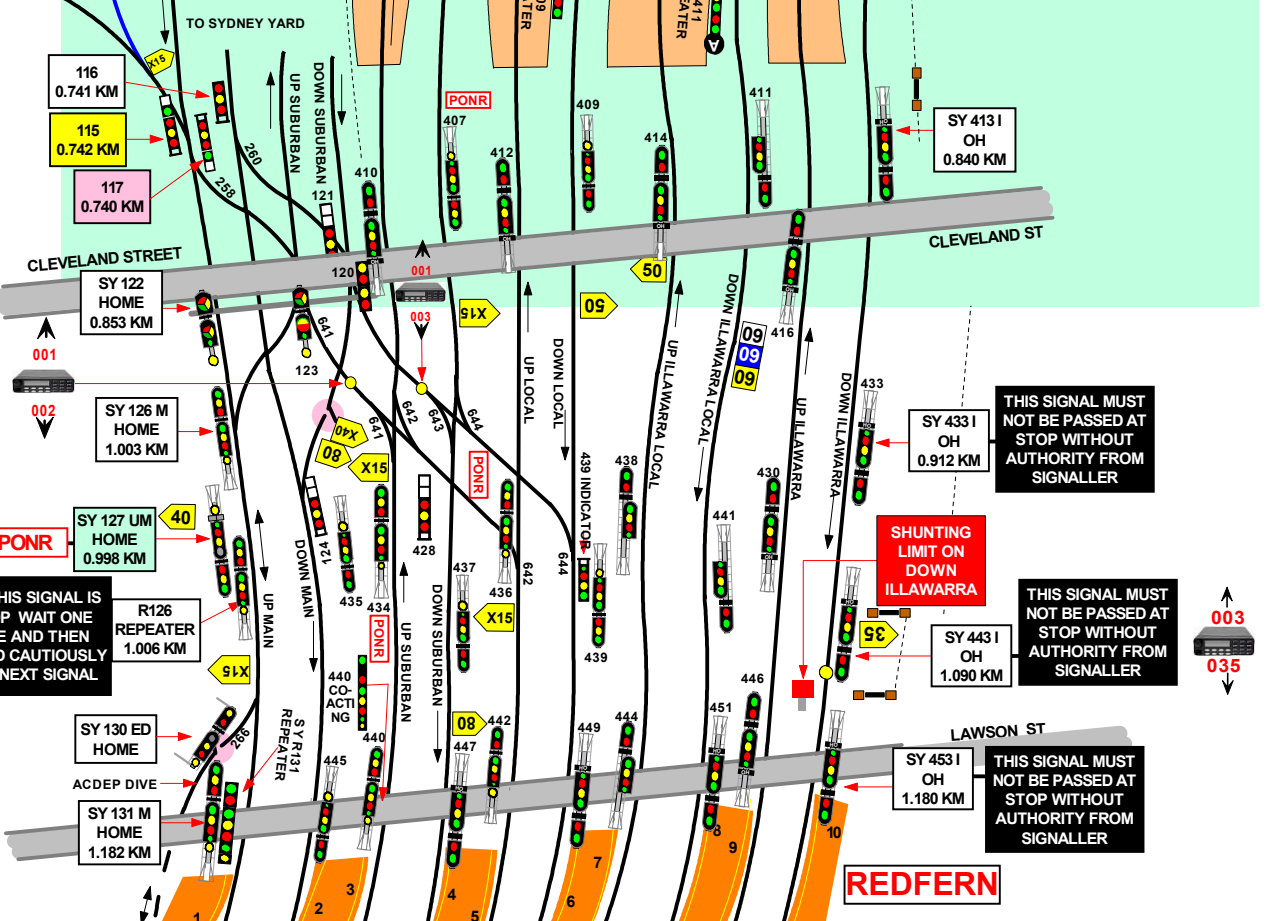
- SY 433 I OH 0.912 KM

- SY 443 I OH 1.090 KM

- SY 453 I OH 1.180 KM

WHEN THIS SIGNAL IS AT STOP WAIT ONE MINUTE AND THEN PROCEED CAUTIOUSLY TO THE NEXT SIGNAL

SHUNTING LIMIT ON DOWN ILLAWARRA



SIGNAL	DESTINATION	INDICATION
SY 115	UP GOODS	G
	UP MAIN	M
	REGENTS STREET	R

SIGNAL	DESTINATION	INDICATION
SY 127	UP MAIN (M)	-
	UP MAIN (S)	UM
	ENGINE DIVE (M)	-
	ENGINE DIVE (S)	ED

SECTION : **CENTRAL TO AIRPORT PORTAL**
CENTRAL TO REDFERN
 MAP SET : CENTRAL TO TURRELLA
 PAGE : 2 OF 4
 UPDATED TO : 8 April 2024

INFORMATION

CONTROLLED FROM : RAIL OPERATIONS CENTRE

RADIO AREA CODE : 002 (SYDNEY EAST UP)
 003 (SYDNEY EAST DOWN)
 035 (SYDNEY ILLAWARRA JN)

TWO WAY RUNNING BETWEEN ALL PLATFORMS
 IN SYDNEY YARD AND EVELIEGH YARD VIA
 ENGINE DIVE

APPENDICES

PLEASE SEE APPENDICES FOR POINTS OF NO RETURN,
 TERMINATING MOVEMENTS AND SIDING LENGTHS

SIGNAL	DESTINATION	INDICATION
SY 117	UP MAIN (S)	UM

SIGNAL	DESTINATION	INDICATION
SY 391 IL	DOWN NSR AIRPORT	A
	DOWN ILLAWARRA LOCAL	-
	DOWN LOCAL	L

SIGNAL	DESTINATION	INDICATION
SY 121	DOWN MAIN (S)	DM
	DOWN SUBURBAN (S)	DS

SIGNAL	DESTINATION	INDICATION
SY 428	DOWN MAIN	DM
	DOWN SUBURBAN (S)	DS

SIGNAL	DESTINATION	INDICATION
SY 124	DOWN MAIN (S)	DM
	DOWN SUBURBAN (S)	DS

SIGNAL	DESTINATION	INDICATION
SY 436 L	UP MAIN	M
	UP SUBURBAN	Y



SIGNAL SY 389 L

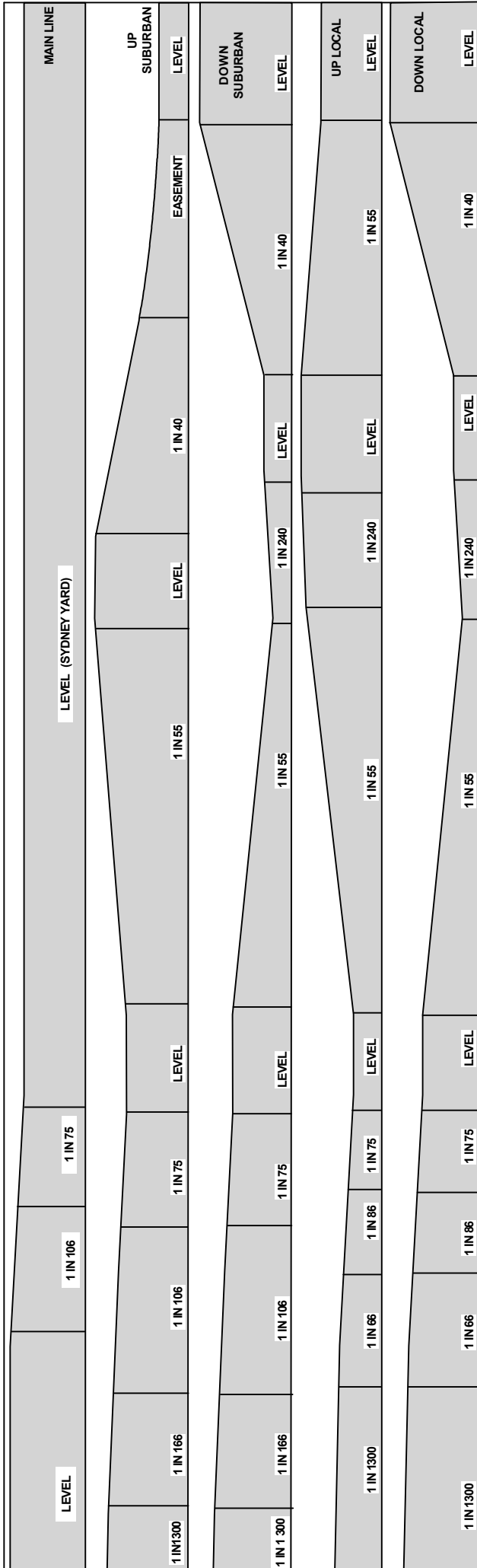


SIGNAL SY 407 S



SIGNAL SY 436 L

SY 380 S OH 0.185 KM	SY 392 S OH 0.381 KM	SY 384 S HOME 0.260 KM	SY 382 L OH 0.184 KM	SY R384 REPEATER 0.261 KM	SY 386 L HOME 0.300 KML	SY 381 S HOME 0.182 KM	SY 383 L HOME 0.182 KM	SY 383 IND INDICATOR 0.182 KM	SY 389 L HOME 0.325 KM	SY 388 IL HOME 0.281 KM	SY 390 I HOME 0.280 KM	SY 385 IL HOME 0.181 KM	SY 387 I HOME 0.180 KM	SY 391 IL HOME 0.270 KM
SY 395 S OH 0.381 KM	SY 394 L HOME 0.470 KM	SY 397 L HOME 0.491 KM	SY 396 IL HOME 0.480 KM	SY 398 NS HOME 0.425 KM	SY 399 IL HOME 0.490 KM	SR 0.7 AUTO/CONT STARTING 0.625 KM	SR 0.7 IND INDICATOR 0.625 KM							
SY 400 S HOME 0.612 KM	SY R407 REPEATER 0.661 KM	SY R403 REPEATER 0.542 KM	SY 403 S HOME 0.541 KM	SY 402 L HOME 0.660 KM	SY R409 REPEATER 0.763 KM	SY 404 IL HOME 0.650 KM	SY R411 REPEATER 0.762 KM	SY 406 I HOME 0.611 KM	SY 422 NS ACCEPT 0.660 KM					
SY 115 SHUNT 0.742 KM	SY 117 SHUNT 0.740 KM	SY 116 SHUNT 0.741 KM	SY 122 HOME 0.840 KM	SY 123 HOME 0.832 KM	SY 121 SHUNT 0.831 KM	SY 120 HOME 0.830 KM	SY 410 S OH 0.814 KM	SY 407 S HOME 0.764 KM	SY 412 L OH 0.813 KM	SY 409 L HOME 0.763 KM	SY 414 IL OH 0.812 KM	SY 411 IL AUTO 0.762 KM	SY 416 I OH 0.811 KM	SY 413 I OH 0.840 KM
SY 127 HOME 0.990 KM	SY 126 M HOME 1.004KM	R126 1.066 KM	SY 124 SHUNT 1.001 KM	SY 435 M HOME 0.997 KM	SY 434 S HOME 1.001 KM	SY 428 SHUNT 1.004 KM	SY 437 S HOME 1.001 KM	SY 436 L HOME 1.040 KM	SY 439 L HOME 1.014 KM	SY 438 IL AUTO 1.042 KM	SY 441 IL AUTO 1.010 KM	SY 430 I OH 1.043 KM	SY 433 I OH 0.912 KM	
SY 130 ED HOME 1.164 KM	SY 131 M HOME 1.214 KM	SY R131 REPEATER 1.215 KM	SY 445 M HOME 1.184 KM	SY 440 S HOME 1.213 KM	SY 447 S OH 1.183 KM	SY 442 L HOME 1.212 KM	SY 449 L OH 1.182 KM	SY 444 IL AUTO 1.211 KM	SY 451 IL OH 1.181 KM	SY 446 I OH 1.210 KM	SY 443 I OH 1.091 KM	SY 453 I OH 1.180 KM		



SECTION : **CENTRAL TO AIRPORT PORTAL**
CENTRAL TO REDFERN
 MAP SET : CENTRAL TO TURRELLA
 PAGE : 3 OF 4
 UPDATED TO : 8 April 2024

INFORMATION

CONTROLLED FROM : RAIL OPERATIONS CENTRE

RADIO AREA CODE : 002 (SYDNEY EAST UP)
 003 (SYDNEY EAST DN)
 035 (SYDNEY ILLAWARRA JN)

APPENDICES

PLEASE SEE APPENDICES FOR POINTS OF NO RETURN,
 TERMINATING MOVEMENTS AND SIDING LENGTHS

CENTRAL
TIMING MARKER SIGNS

FOUR TIMING MARKER SIGNS, EACH WITH A YELLOW REFLECTIVE LETTER ' T ' DISPLAYED ON A BLACK BACKGROUND, ARE PROVIDED IN THE CENTRAL FLYOVER AREA WHERE THE TIMING SECTIONS ARE UNUSUALLY SHORT.

THEY ARE LOCATED AS FOLLOWS:

LINE	MARKER LOCATION
DOWN LOCAL	23 METRES IN APPROACH TO SIGNAL No. SY 397 L
UP LOCAL	16 METRES IN APPROACH TO SIGNAL No. SY 394 L
UP ILLAWARRA LOCAL	36 METRES IN APPROACH TO SIGNAL No. SY 388 IL, AND 16 METRES IN APPROACH TO SIGNAL No. 396 IL

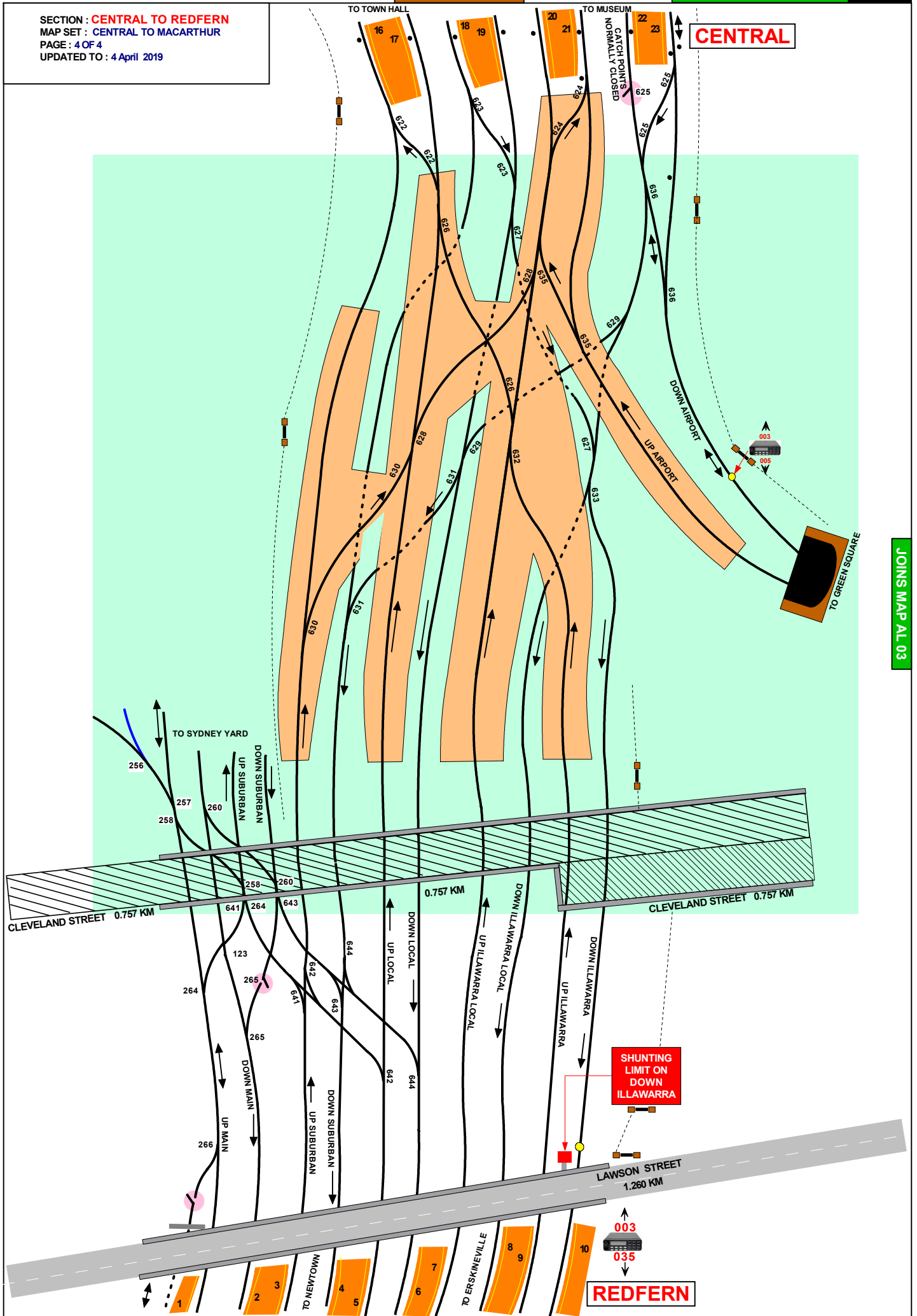
A TRAIN APPROACHING ANY OF THESE SIGNALS AND SHOWING A LOW SPEED OR MEDIUM CAUTION INDICATION SHALL BE DRAWN PAST THE ' T ' MARKER SIGN, OTHERWISE THE TIMING WILL NOT COMMENCE AND THE TRAIN STOP WILL NOT CLEAR.

PLATFORMS WHERE SETTING BACK IS NOT PERMITTED

	LINE TITLE	PLATFORM
REDFERN	UP SUBURBAN	3
	UP LOCAL	5
	UP ILLAWARRA LOCAL	7
	DOWN ILLAWARRA LOCAL	8
	UP ILLAWARRA	9

SECTION : **CENTRAL TO REDFERN**
MAP SET : CENTRAL TO MACARTHUR
PAGE : 4 OF 4
UPDATED TO : 4 April 2019

CENTRAL



REDFERN

THIS SIGNAL MUST NOT BE PASSED AT STOP WITHOUT AUTHORITY FROM SIGNALLER

SY 422 SR OH
0.660 KM

TO CENTRAL

SY 801SR INDICATOR
0.625 KM

SY 801SR HOME / STARTING
0.625 KM

SECTION : **CENTRAL TO GREEN SQUARE**
MAP SET : **CENTRAL TO TURRELLA**
UPDATED TO : 8 April 2024

GRADIENT

INFORMATION

CONTROLLED FROM : **RAIL OPERATIONS CENTRE**
RADIO AREA CODE : **002** (SYDNEY EAST UP)
005 (SYDENHAM)

SPECIAL POINTS OF INTEREST
GENERAL INSTRUCTIONS
AIRPORT LINE

FIRE TELEPHONES ARE INSTALLED IN THE AIRPORT LINE TUNNEL AT VARIOUS LOCATIONS ABOUT 120 METRES APART, AND ARE CONNECTED TO OPERATIONS CONTROL. THEY ARE PAINTED RED TO DISTINGUISH THEM FROM OTHER PHONES. THESE TELEPHONES MUST ONLY BE USED IN THE CASE OF A FIRE OR AN EMERGENCY.

TROLLEYS FOR USE BY EMERGENCY SERVICES

PORTABLE TROLLEYS FOR USE DURING AN EMERGENCY SITUATION ARE PROVIDED AT ALL STATIONS ON THE AIRPORT LINE.

THE TROLLEYS ARE LOCATED UNDERNEATH THE PLATFORM COPING AT THE STATIONS. THE NUMBER OF TROLLEYS PROVIDED IS AS FOLLOWS:

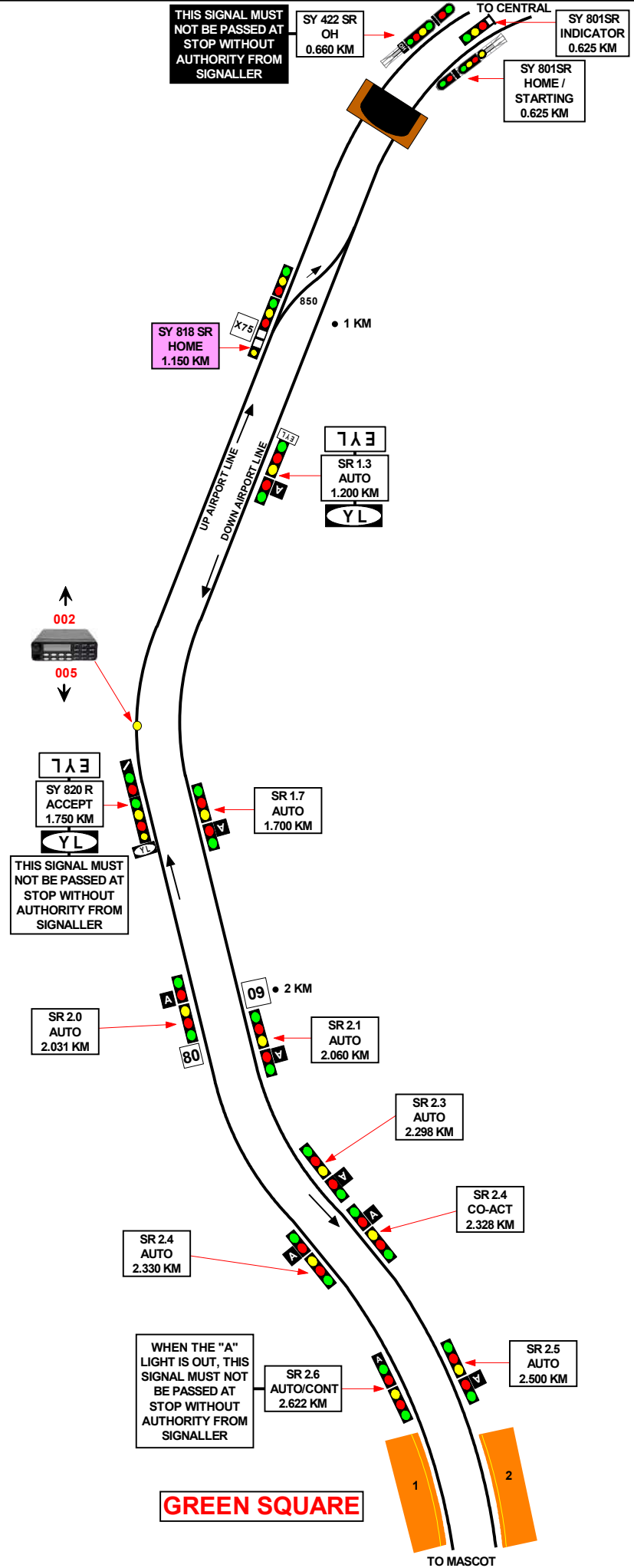
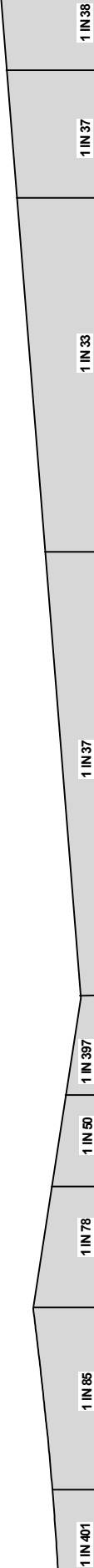
GREEN SQUARE, MASCOT, DOMESTIC, INTERNATIONAL
4 TROLLEYS AT EACH STATION:
2 FOR THE DOWN PLATFORM AND 2 FOR THE UP PLATFORM.
WOLLI CREEK 2 TROLLEYS:
1 FOR THE DOWN PLATFORM AND 1 FOR THE UP PLATFORM.

WRONG RUNNING-DIRECTION AND UNSIGNALLED MOVEMENTS

IF WRONG RUNNING-DIRECTION OR UNSIGNALLED MOVEMENTS NEED TO BE MADE BETWEEN SYDNEY'S YARD LIMITS AND SYDENHAM'S YARD LIMITS, THE SIGNALLER AT SYDENHAM MUST TREAT THE SECTION AS A CONSOLIDATED YARD AND APPLY THE PROVISIONS OF NTR 418. IN ADDITION:

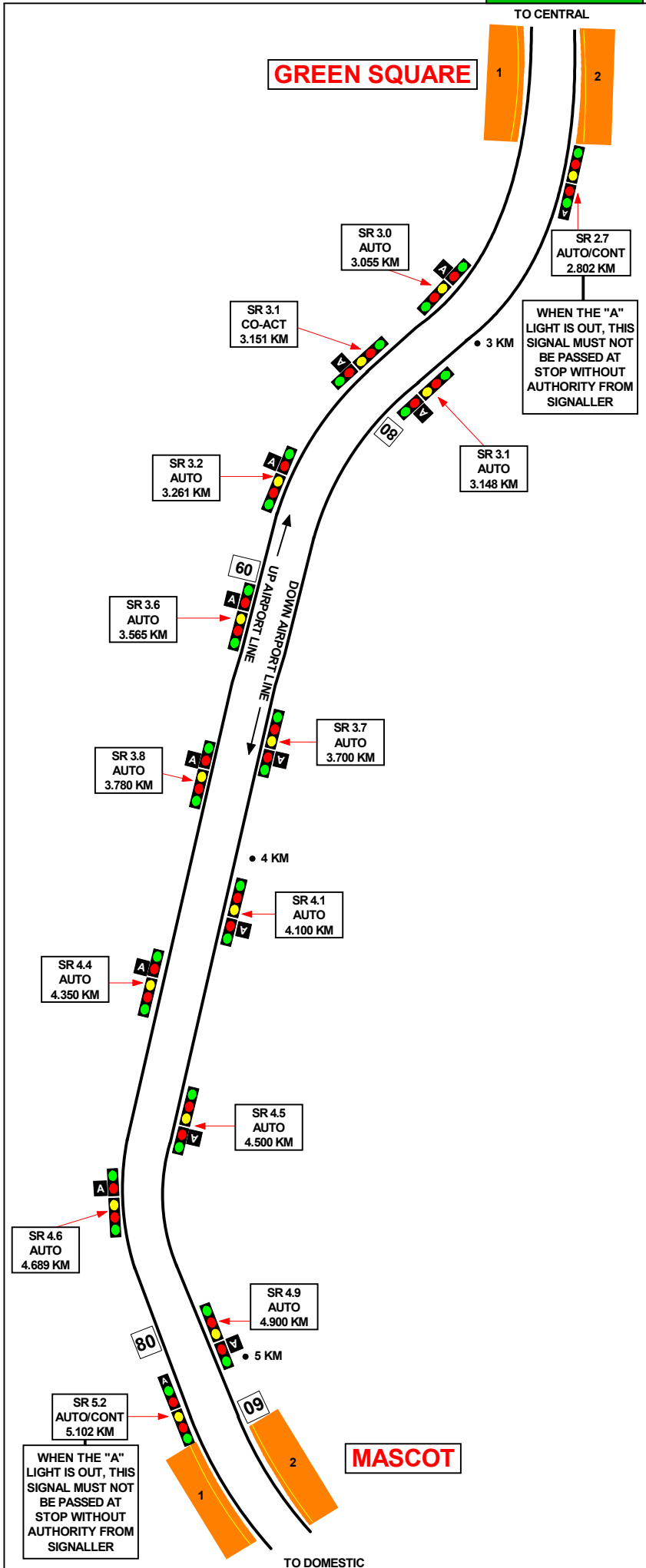
- HEADLIGHTS MUST BE SWITCHED ON BETWEEN PLATFORMS, AND
- RAIL TRAFFIC MUST NOT EXCEED 10KM/H.

SIGNAL	DESTINATION	INDICATION
SY 818	UP AIRPORT	UA
	DOWN AIRPORT	DA



GREEN SQUARE

TO MASCOT



SECTION : **GREEN SQUARE TO MASCOT**
 MAP SET : CENTRAL TO TURRELLA
 UPDATED TO : 8 April 2024

INFORMATION

CONTROLLED FROM : RAIL OPERATIONS CENTRE

RADIO AREA CODE : 005 (SYDENHAM)

SPECIAL POINTS OF INTEREST
GENERAL INSTRUCTIONS
AIRPORT LINE

FIRE TELEPHONES ARE INSTALLED IN THE AIRPORT LINE TUNNEL AT VARIOUS LOCATIONS ABOUT 120 METRES APART, AND ARE CONNECTED TO OPERATIONS CONTROL. THEY ARE PAINTED RED TO DISTINGUISH THEM FROM OTHER PHONES. THESE TELEPHONES MUST ONLY BE USED IN THE CASE OF A FIRE OR AN EMERGENCY.

TROLLEYS FOR USE BY EMERGENCY SERVICES

PORTABLE TROLLEYS FOR USE DURING AN EMERGENCY SITUATION ARE PROVIDED AT ALL STATIONS ON THE AIRPORT LINE.

THE TROLLEYS ARE LOCATED UNDERNEATH THE PLATFORM COPING AT THE STATIONS.
 THE NUMBER OF TROLLEYS PROVIDED IS AS FOLLOWS:

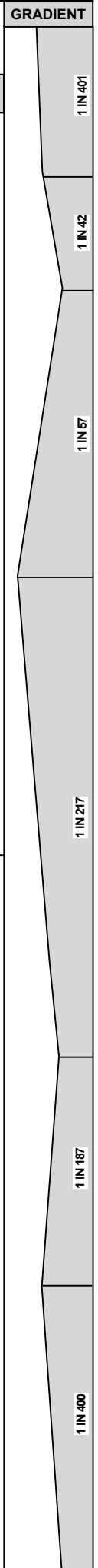
GREEN SQUARE, MASCOT, DOMESTIC, INTERNATIONAL
 4 TROLLEYS AT EACH STATION:
 2 FOR THE DOWN PLATFORM AND 2 FOR THE UP PLATFORM.
 WOLLI CREEK 2 TROLLEYS:
 1 FOR THE DOWN PLATFORM AND 1 FOR THE UP PLATFORM.

WRONG RUNNING-DIRECTION AND UNSIGNALLED MOVEMENTS

IF WRONG RUNNING-DIRECTION OR UNSIGNALLED MOVEMENTS NEED TO BE MADE BETWEEN SYDNEY'S YARD LIMITS AND SYDENHAM'S YARD LIMITS, THE SIGNALLER AT SYDENHAM MUST TREAT THE SECTION AS A CONSOLIDATED YARD AND APPLY THE PROVISIONS OF NTR 418.

IN ADDITION:

- HEADLIGHTS MUST BE SWITCHED ON BETWEEN PLATFORMS, AND
- RAIL TRAFFIC MUST NOT EXCEED 10KM/H.



SECTION : MASCOT TO DOMESTIC
MAP SET : CENTRAL TO TURRELLA
UPDATED TO : 8 April 2024

INFORMATION

CONTROLLED FROM : RAIL OPERATIONS CENTRE

RADIO AREA CODE : 005 (SYDENHAM)

SPECIAL POINTS OF INTEREST
GENERAL INSTRUCTIONS
AIRPORT LINE

FIRE TELEPHONES ARE INSTALLED IN THE AIRPORT LINE TUNNEL AT VARIOUS LOCATIONS ABOUT 120 METRES APART, AND ARE CONNECTED TO OPERATIONS CONTROL. THEY ARE PAINTED RED TO DISTINGUISH THEM FROM OTHER PHONES.
THESE TELEPHONES MUST ONLY BE USED IN THE CASE OF A FIRE OR AN EMERGENCY.

TROLLEYS FOR USE BY EMERGENCY SERVICES

PORTABLE TROLLEYS FOR USE DURING AN EMERGENCY SITUATION ARE PROVIDED AT ALL STATIONS ON THE AIRPORT LINE.

THE TROLLEYS ARE LOCATED UNDERNEATH THE PLATFORM COPING AT THE STATIONS.
THE NUMBER OF TROLLEYS PROVIDED IS AS FOLLOWS:

- GREEN SQUARE, MASCOT, DOMESTIC, INTERNATIONAL
4 TROLLEYS AT EACH STATION:
2 FOR THE DOWN PLATFORM AND 2 FOR THE UP PLATFORM.
- WOLLI CREEK 2 TROLLEYS:
1 FOR THE DOWN PLATFORM AND 1 FOR THE UP PLATFORM.

WRONG RUNNING-DIRECTION AND UNSIGNALLED MOVEMENTS

IF WRONG RUNNING-DIRECTION OR UNSIGNALLED MOVEMENTS NEED TO BE MADE BETWEEN SYDNEY'S YARD LIMITS AND SYDENHAM'S YARD LIMITS, THE SIGNALLER AT SYDENHAM MUST TREAT THE SECTION AS A CONSOLIDATED YARD AND APPLY THE PROVISIONS OF NTR 418.
IN ADDITION:

- HEADLIGHTS MUST BE SWITCHED ON BETWEEN PLATFORMS, AND
- RAIL TRAFFIC MUST NOT EXCEED 10KM/H.

1 IN 400

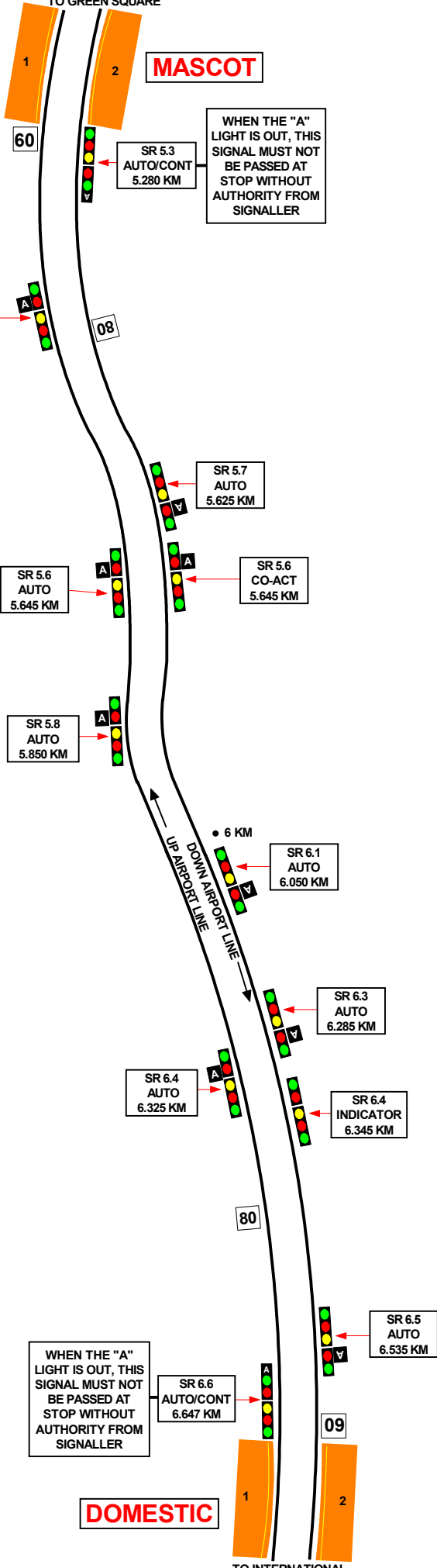
1 IN 115

1 IN 137

1 IN 400

TO GREEN SQUARE

MASCOT



DOMESTIC

TO INTERNATIONAL

SECTION : DOMESTIC TO INTERNATIONAL
 MAP SET : CENTRAL TO TURRELLA
 UPDATED TO : 8 April 2024

INFORMATION

CONTROLLED FROM : RAIL OPERATIONS CENTRE

RADIO AREA CODE : 005 (SYDENHAM)

SPECIAL POINTS OF INTEREST

**GENERAL INSTRUCTIONS
 AIRPORT LINE**

FIRE TELEPHONES ARE INSTALLED IN THE AIRPORT LINE TUNNEL AT VARIOUS LOCATIONS ABOUT 120 METRES APART, AND ARE CONNECTED TO OPERATIONS CONTROL. THEY ARE PAINTED RED TO DISTINGUISH THEM FROM OTHER PHONES. THESE TELEPHONES MUST ONLY BE USED IN THE CASE OF A FIRE OR AN EMERGENCY.

TROLLEYS FOR USE BY EMERGENCY SERVICES

PORTABLE TROLLEYS FOR USE DURING AN EMERGENCY SITUATION ARE PROVIDED AT ALL STATIONS ON THE AIRPORT LINE.

THE TROLLEYS ARE LOCATED UNDERNEATH THE PLATFORM COPING AT THE STATIONS. THE NUMBER OF TROLLEYS PROVIDED IS AS FOLLOWS:

- GREEN SQUARE, MASCOT, DOMESTIC, INTERNATIONAL
4 TROLLEYS AT EACH STATION:
- 2 FOR THE DOWN PLATFORM AND 2 FOR THE UP PLATFORM.
- WOLLI CREEK 2 TROLLEYS:
- 1 FOR THE DOWN PLATFORM AND 1 FOR THE UP PLATFORM.

**WRONG RUNNING-DIRECTION AND
 UNSIGNALLED MOVEMENTS**

IF WRONG RUNNING-DIRECTION OR UNSIGNALLED MOVEMENTS NEED TO BE MADE BETWEEN SYDNEY'S YARD LIMITS AND SYDENHAM'S YARD LIMITS, THE SIGNALLER AT SYDENHAM MUST TREAT THE SECTION AS A CONSOLIDATED YARD AND APPLY THE PROVISIONS OF NTR 418. IN ADDITION:

- HEADLIGHTS MUST BE SWITCHED ON BETWEEN PLATFORMS, AND
- RAIL TRAFFIC MUST NOT EXCEED 10KM/H.

1 IN 400

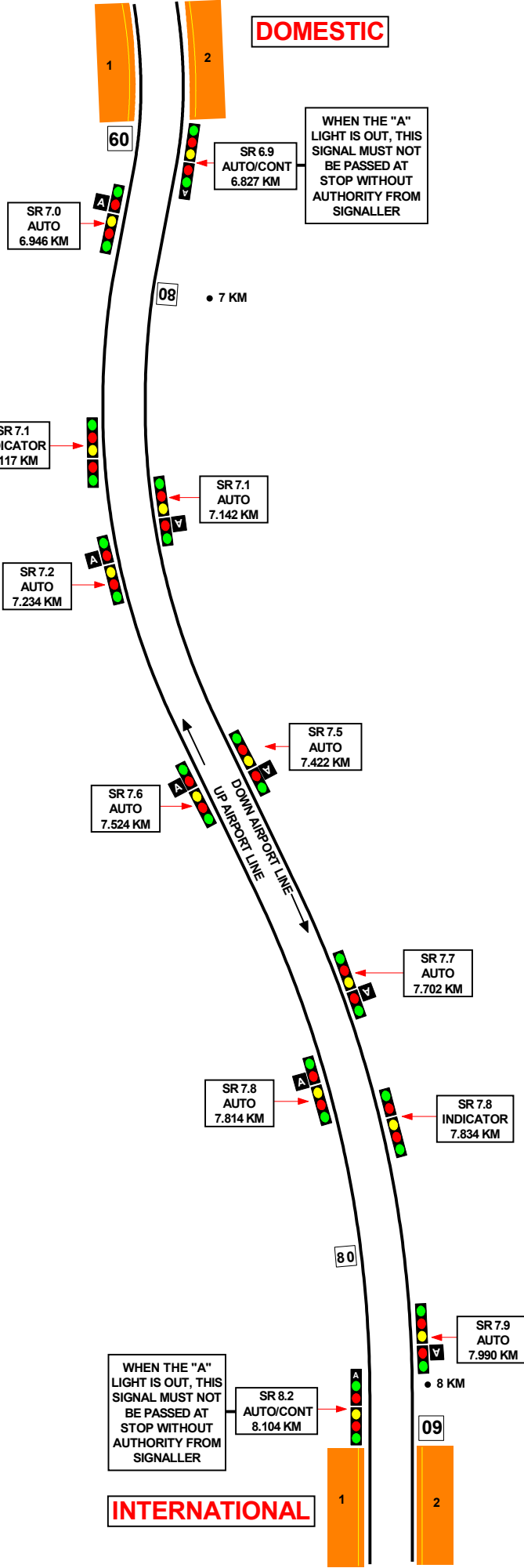
1 IN 39

1 IN 71

1 IN 400

TO MASCOT

DOMESTIC



INTERNATIONAL

TO WOLLI CREEK

INTERNATIONAL

TO DOMESTIC

SECTION : INTERNATIONAL TO WOLLI CREEK
MAP SET : CENTRAL TO TURRELLA
UPDATED TO : 8 April 2024

INFORMATION

CONTROLLED FROM : RAIL OPERATIONS CENTRE

RADIO AREA CODE : 005 (SYDENHAM)

SPECIAL POINTS OF INTEREST
GENERAL INSTRUCTIONS
AIRPORT LINE

FIRE TELEPHONES ARE INSTALLED IN THE AIRPORT LINE TUNNEL AT VARIOUS LOCATIONS ABOUT 120 METRES APART, AND ARE CONNECTED TO OPERATIONS CONTROL. THEY ARE PAINTED RED TO DISTINGUISH THEM FROM OTHER PHONES. THESE TELEPHONES MUST ONLY BE USED IN THE CASE OF A FIRE OR AN EMERGENCY.

TROLLEYS FOR USE BY EMERGENCY SERVICES

PORTABLE TROLLEYS FOR USE DURING AN EMERGENCY SITUATION ARE PROVIDED AT ALL STATIONS ON THE AIRPORT LINE.

THE TROLLEYS ARE LOCATED UNDERNEATH THE PLATFORM COPING AT THE STATIONS. THE NUMBER OF TROLLEYS PROVIDED IS AS FOLLOWS:

GREEN SQUARE, MASCOT, DOMESTIC, INTERNATIONAL
4 TROLLEYS AT EACH STATION:
2 FOR THE DOWN PLATFORM AND 2 FOR THE UP PLATFORM.
WOLLI CREEK 2 TROLLEYS:
1 FOR THE DOWN PLATFORM AND 1 FOR THE UP PLATFORM.

WRONG RUNNING-DIRECTION AND UNSIGNALLED MOVEMENTS

IF WRONG RUNNING-DIRECTION OR UNSIGNALLED MOVEMENTS NEED TO BE MADE BETWEEN SYDNEY'S YARD LIMITS AND SYDENHAM'S YARD LIMITS, THE SIGNALLER AT SYDENHAM MUST TREAT THE SECTION AS A CONSOLIDATED YARD AND APPLY THE PROVISIONS OF NTR 418. IN ADDITION:

- HEADLIGHTS MUST BE SWITCHED ON BETWEEN PLATFORMS, AND
- RAIL TRAFFIC MUST NOT EXCEED 10KM/H.

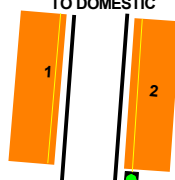
1 IN 400

1 IN 44

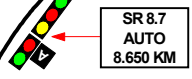
1 IN 51

1 IN 35

1 IN 100



WHEN THE "A" LIGHT IS OUT, THIS SIGNAL MUST NOT BE PASSED AT STOP WITHOUT AUTHORITY FROM SIGNALLER



UP AIRPORT LINE
DOWN AIRPORT LINE



• 9 KM

09

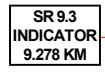
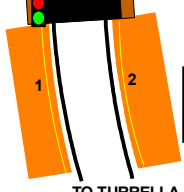


PLATE "E"
WHEN THE "A" LIGHT IS OUT, THIS SIGNAL MUST NOT BE PASSED AT STOP WITHOUT AUTHORITY FROM SIGNALLER



WOLLI CREEK LOWER LEVEL

TO TURRELLA

SECTION : WOLLI CREEK TO TURRELLA

MAP SET : CENTRAL TO TURRELLA

UPDATED TO : 8 April 2024

INFORMATION

CONTROLLED FROM : RAIL OPERATIONS CENTRE
RADIO AREA CODE : 005 (SYDENHAM)

APPENDICES

PLEASE SEE APPENDICES FOR POINTS OF NO RETURN,
TERMINATING MOVEMENTS AND SIDING LENGTHS

GRADIENT

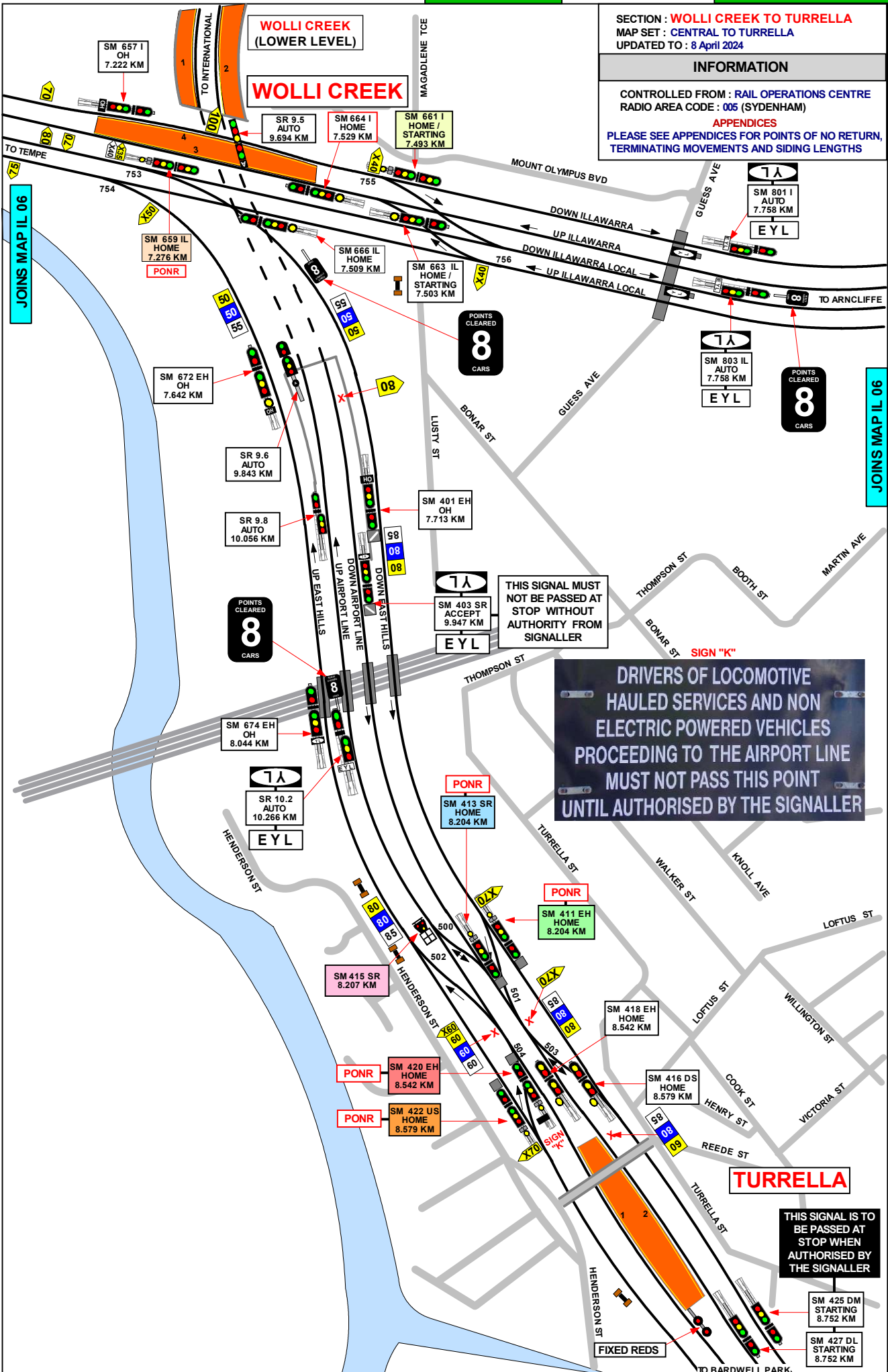
1 IN 3300

1 IN 40

1 IN 42

LEVEL

1 IN 330



JOINS MAP IL 06

JOINS MAP IL 06

SECTION : **WOLLI CREEK TO TURRELLA**
 MAP SET : **CENTRAL TO TURRELLA**
 UPDATED TO : 8 April 2024

INFORMATION

CONTROLLED FROM : RAIL OPERATIONS CENTRE

RADIO AREA CODE : 005 (SYDENHAM)

FIRE TELEPHONES ARE INSTALLED IN THE AIRPORT LINE TUNNEL AT VARIOUS LOCATIONS ABOUT 120 METRES APART, AND ARE CONNECTED TO OPERATIONS CONTROL. THEY ARE PAINTED RED TO DISTINGUISH THEM FROM OTHER PHONES. THESE TELEPHONES MUST ONLY BE USED IN THE CASE OF A FIRE OR AN EMERGENCY.

TROLLEYS FOR USE BY EMERGENCY SERVICES.

PORTABLE TROLLEYS FOR USE DURING AN EMERGENCY SITUATION ARE PROVIDED AT ALL STATIONS ON THE AIRPORT LINE.

THE TROLLEYS ARE LOCATED UNDERNEATH THE PLATFORM COPING AT THE STATIONS.

THE NUMBER OF TROLLEYS PROVIDED IS AS FOLLOWS:

GREEN SQUARE, MASCOT, DOMESTIC, INTERNATIONAL
 4 TROLLEYS AT EACH STATION:
 2 FOR THE DOWN PLATFORM AND 2 FOR THE UP PLATFORM.
 WOLLI CREEK 2 TROLLEYS:
 1 FOR THE DOWN PLATFORM AND 1 FOR THE UP PLATFORM.

APPENDICES

PLEASE SEE APPENDICES FOR POINTS OF NO RETURN, TERMINATING MOVEMENTS AND SIDING LENGTHS

SIGNAL	DESTINATION	INDICATION
SM 415 SR	DOWN MAIN	DM
	DOWN LOCAL	DL
	UP LOCAL	UL

SIGNAL	DESTINATION	INDICATION
SM 413 SR	DOWN MAIN (M)	M
	DOWN MAIN (S)	DM
	DOWN LOCAL (M)	L
	DOWN LOCAL (S)	DL

SIGNAL	DESTINATION	INDICATION
SM 411 EH	DOWN MAIN (M)	M
	DOWN MAIN (S)	DM
	DOWN LOCAL (M)	L
	DOWN LOCAL (S)	DL

SIGNAL	DESTINATION	INDICATION
SM 422 US	UP EAST HILLS (M)	E
	UP EAST HILLS (S)	EH
	UP AL (M)	A
	UP AL (S)	AL

SIGNAL	DESTINATION	INDICATION
SM 420 EH	UP EAST HILLS (M)	E
	UP EAST HILLS (S)	EH
	UP AL (M)	A
	UP AL (S)	AL