

# DRIVERS ROUTE KNOWLEDGE DIAGRAMS

## CRONULLA LINE

SUTHERLAND

KIRRAWEE

GYMEA

MIRANDA

CARINGBAH

WOOLOOWARE

CRONULLA

**Effective Date:** November 2022

**Version:** 4.17

### Explanatory Notes:

Navigate to your area of interest via the station index or by using links created in Adobe bookmarks.

This document is approved for **route knowledge only**.

**Do not use these diagrams for any safety related purpose** without validating the information against a controlled source or in the field.

Information in these diagrams is uncontrolled.

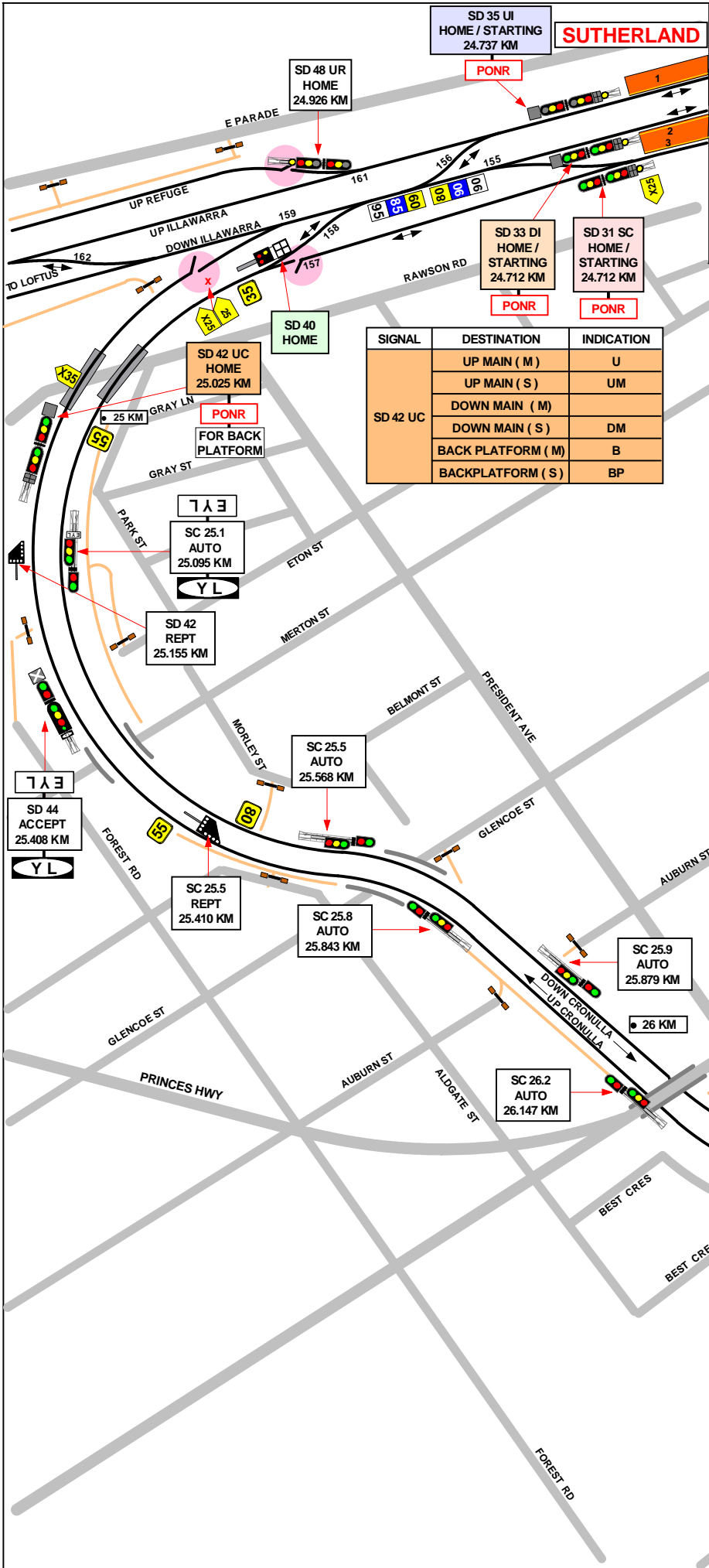
Please report any updates to  
[gis.support@transport.nsw.gov.au](mailto:gis.support@transport.nsw.gov.au)



**Copyright:** Sydney Trains

**Ownership:** Geospatial Services,  
Asset Information Systems & Services

**Location:** TRIM Record No.D2015/582



SECTION : **SUTHERLAND TO KIRRAWEE**  
 MAP SET : SUTHERLAND TO CRONULLA  
 UPDATED TO : 22 March 2018

GRADIENT

**INFORMATION**

**SPECIAL POINTS OF INTEREST**

**SUTHERLAND**  
 CONTROLLED FROM : SYDENHAM  
 RADIO AREA CODE : 008 (SUTHERLAND)

SIGNAL	DESTINATION	INDICATION
SD 31 SC	BRANCH LINE ( M )	
	BRANCH LINE ( S )	DB
	DOWN MAIN ( M )	DM
	DOWN MAIN ( S )	DM
SD 31 SC	UP MAIN ( M )	UM
	UP MAIN ( M )	UM

SIGNAL	DESTINATION	INDICATION
SD 33 DI	BRANCH LINE ( M )	
	BRANCH LINE ( S )	DB
	DOWN MAIN ( M )	DM
	DOWN MAIN ( S )	DM
	UP MAIN ( M )	UM

SIGNAL	DESTINATION	INDICATION
SD 35 UI	BRANCH LINE ( M )	
	BRANCH LINE ( S )	DB
	DOWN MAIN ( M )	DM
	DOWN MAIN ( S )	DM
	UP MAIN ( S )	UM
SD 35 UI	UP REFUGE ( S )	UR
	UP REFUGE ( S )	UR

SIGNAL	DESTINATION	INDICATION
SD 40	UP MAIN ( S )	UM
	DOWN MAIN ( S )	DM
	BACK PLATFORM ( S )	BP

SIGNAL	DESTINATION	INDICATION
SD 42 UC	UP MAIN ( M )	U
	UP MAIN ( S )	UM
	DOWN MAIN ( M )	DM
	DOWN MAIN ( S )	DM
	BACK PLATFORM ( M )	B
	BACKPLATFORM ( S )	BP

LEVEL

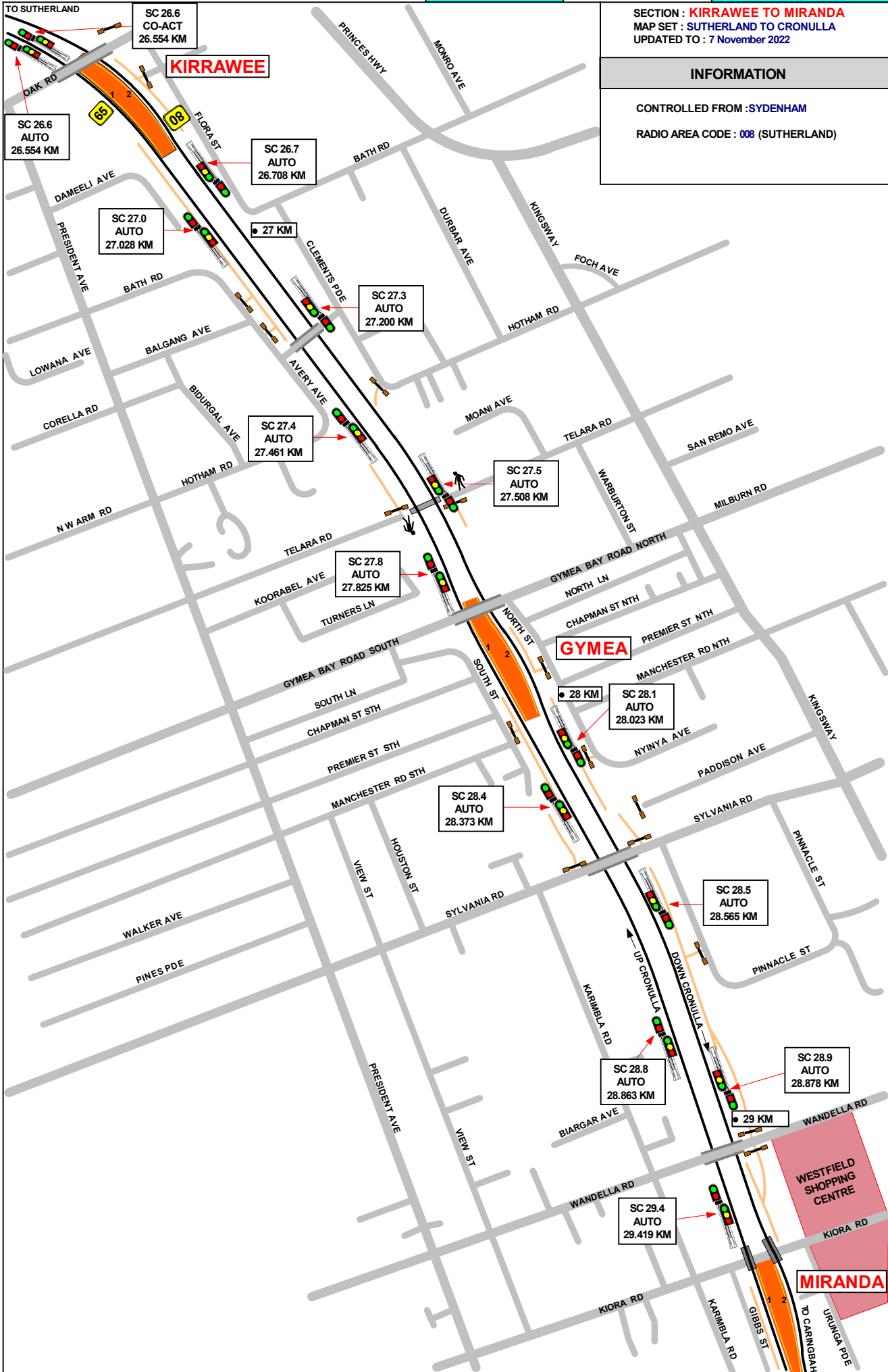
1 IN 40

1 IN 132

1 IN 200

1 IN 200

1 IN 82



SECTION : **KIRRAWEE TO MIRANDA**  
 MAP SET : **SUTHERLAND TO CRONULLA**  
 UPDATED TO : **7 November 2022**

**INFORMATION**

CONTROLLED FROM : **SYDENHAM**

RADIO AREA CODE : **008 (SUTHERLAND)**

GRADIENT
1 IN 82
1 IN 40
1 IN 60
1 IN 40
1 IN 550
1 IN 51
1 IN 400

SECTION : **MIRANDA TO CARINGBAH**  
MAP SET : **SUTHERLAND TO CRONULLA**  
UPDATED TO : 17 July 2014

**INFORMATION**

CONTROLLED FROM : **SYDENHAM**  
RADIO AREA CODE : **008 (SUTHERLAND)**

GRADIENT

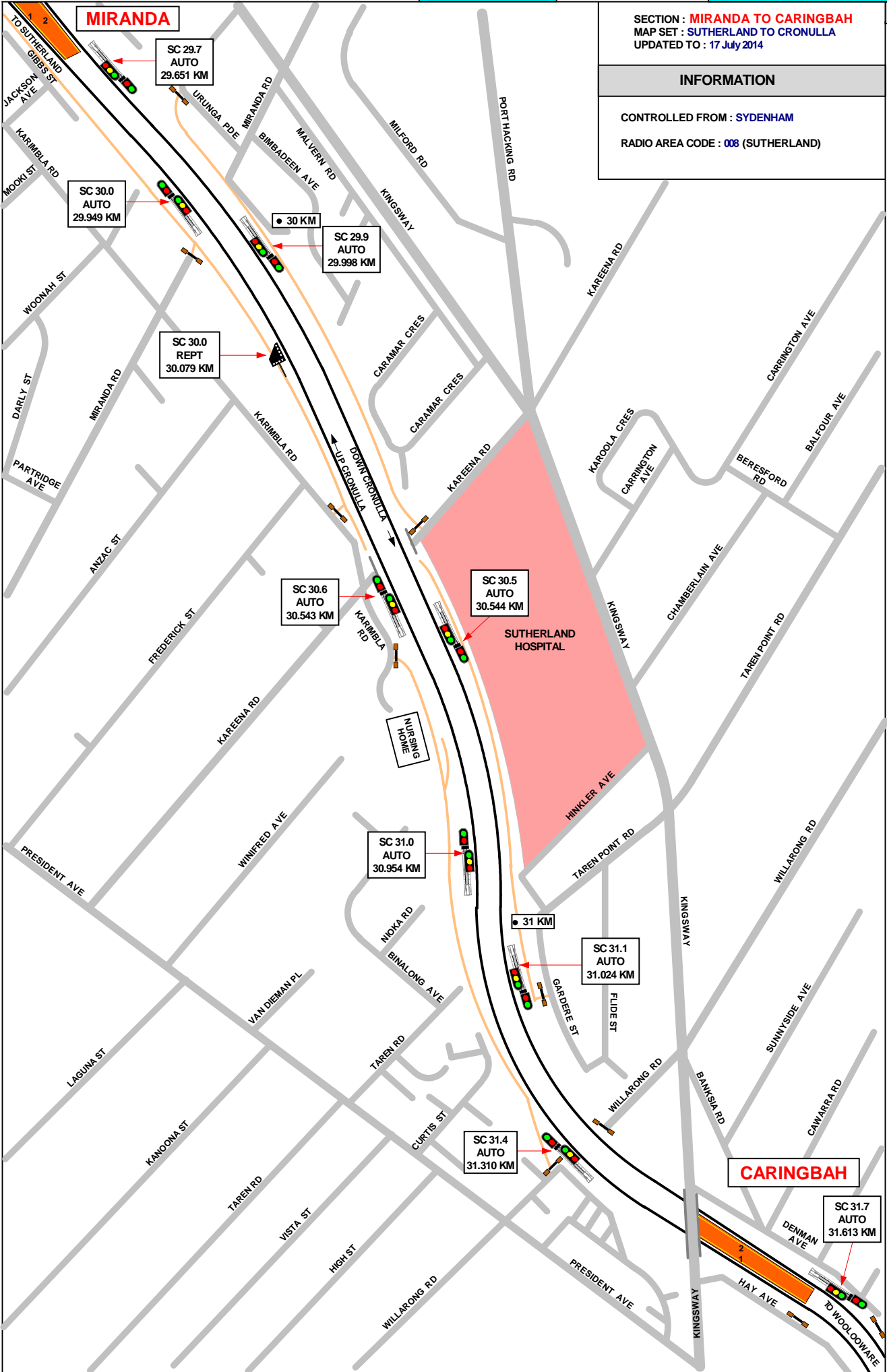
1 IN 400

1 IN 40

1 IN 63

1 IN 77

1 IN 165



SECTION : CARINGBAH TO WOOLLOOWARE  
MAP SET : SUTHERLAND TO CRONULLA  
UPDATED TO : 1 June 2015

INFORMATION

CONTROLLED FROM : SYDENHAM

RADIO AREA CODE : 008 (SUTHERLAND)  
056 (CRONULLA)

GRADIENT

1 IN 165

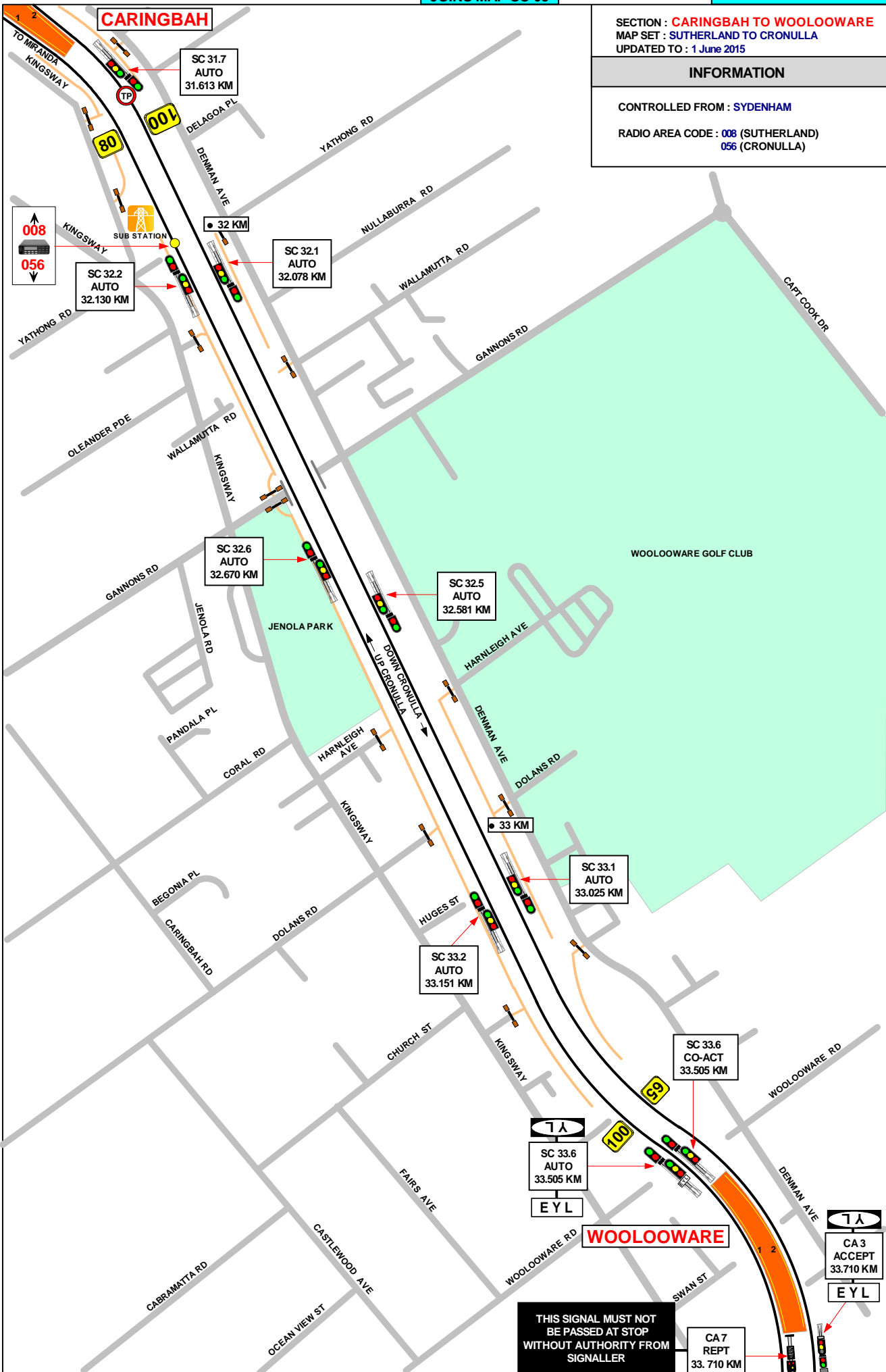
1 IN 42

1 IN 76

1 IN 97

1 IN 41

1 IN 114



SECTION : WOOLLOOWARE TO CRONULLA  
 MAP SET : SUTHERLAND TO CRONULLA  
 UPDATED TO : 15 July 2019

**INFORMATION**

CONTROLLED FROM : SYDENHAM  
 RADIO AREA CODE : 056 (CRONULLA)

**SPECIAL POINTS OF INTEREST**  
**CRONULLA**

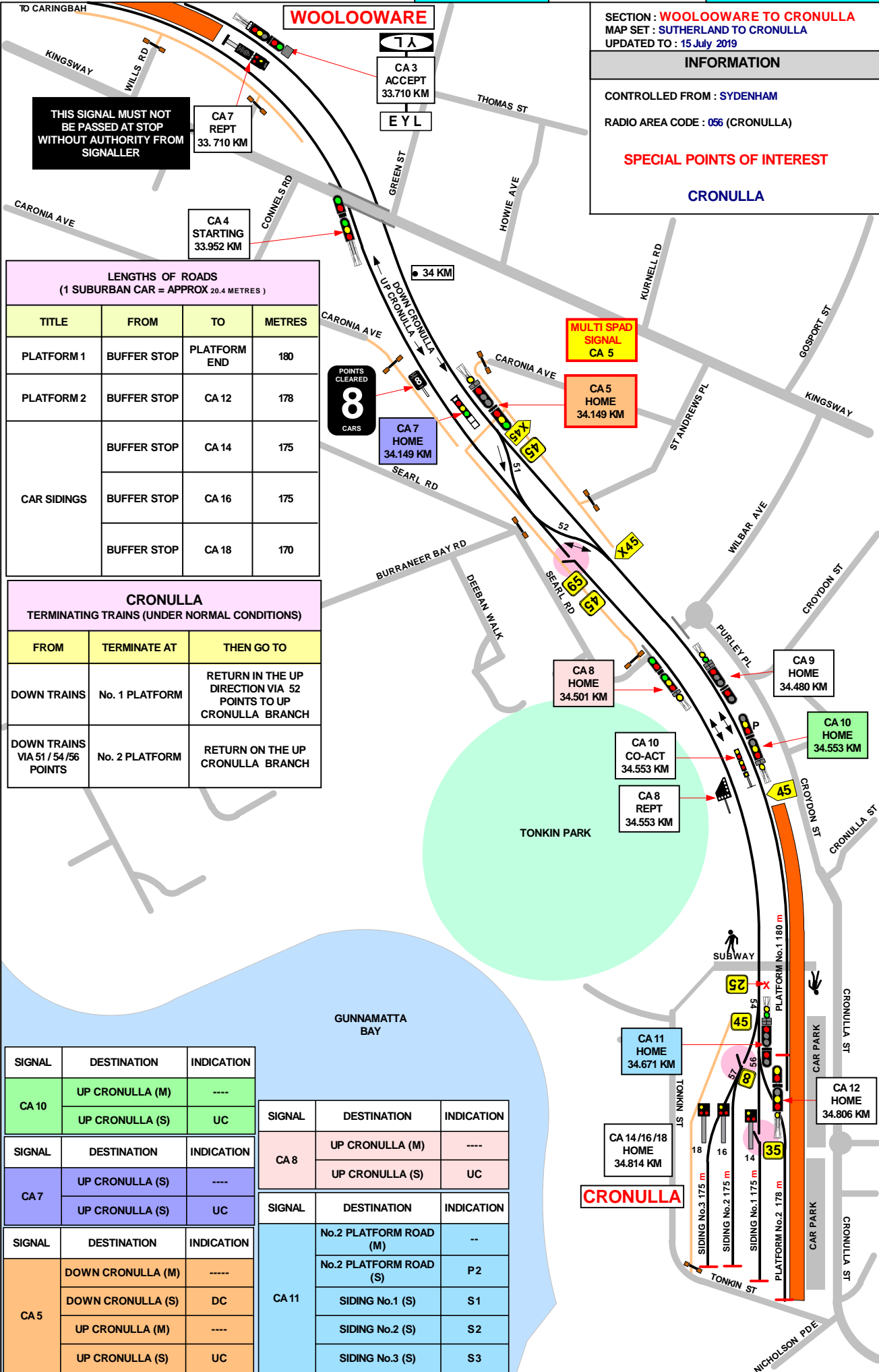
GRADIENT

1 IN 114

1 IN 48

1 IN 42

1 IN 200



**LENGTHS OF ROADS**  
(1 SUBURBAN CAR = APPROX 20.4 METRES)

TITLE	FROM	TO	METRES
PLATFORM 1	BUFFER STOP	PLATFORM END	180
PLATFORM 2	BUFFER STOP	CA 12	178
CAR SIDINGS	BUFFER STOP	CA 14	175
	BUFFER STOP	CA 16	175
	BUFFER STOP	CA 18	170

**CRONULLA**  
TERMINATING TRAINS (UNDER NORMAL CONDITIONS)

FROM	TERMINATE AT	THEN GO TO
DOWN TRAINS	No. 1 PLATFORM	RETURN IN THE UP DIRECTION VIA 52 POINTS TO UP CRONULLA BRANCH
DOWN TRAINS VIA 51 / 54 / 56 POINTS	No. 2 PLATFORM	RETURN ON THE UP CRONULLA BRANCH

SIGNAL	DESTINATION	INDICATION
CA 10	UP CRONULLA (M)	----
	UP CRONULLA (S)	UC
CA 7	UP CRONULLA (S)	----
	UP CRONULLA (S)	UC
CA 5	DOWN CRONULLA (M)	-----
	DOWN CRONULLA (S)	DC
	UP CRONULLA (M)	----
	UP CRONULLA (S)	UC

SIGNAL	DESTINATION	INDICATION
CA 8	UP CRONULLA (M)	----
	UP CRONULLA (S)	UC
CA 11	No.2 PLATFORM ROAD (M)	--
	No.2 PLATFORM ROAD (S)	P2
	SIDING No.1 (S)	S1
	SIDING No.2 (S)	S2
	SIDING No.3 (S)	S3