

DRIVERS ROUTE KNOWLEDGE DIAGRAMS

EAST HILLS LINE

TURRELLA
BARDWELL PARK
BEXLEY NORTH
KINGSGROVE
BEVERLY HILLS
NARWEE
RIVERWOOD
PADSTOW
REVESBY
PANANIA
EAST HILLS
HOLSWORTHY
GLENFIELD

Effective Date: April 2019

Version: 4.21

Explanatory Notes:

Navigate to your area of interest via the station index or by using links created in Adobe bookmarks.

This document is approved for **route knowledge only**.

Do not use these diagrams for any safety related purpose without validating the information against a controlled source or in the field.

Information in these diagrams is uncontrolled.

Please report any updates to
gjs.support@transport.nsw.gov.au



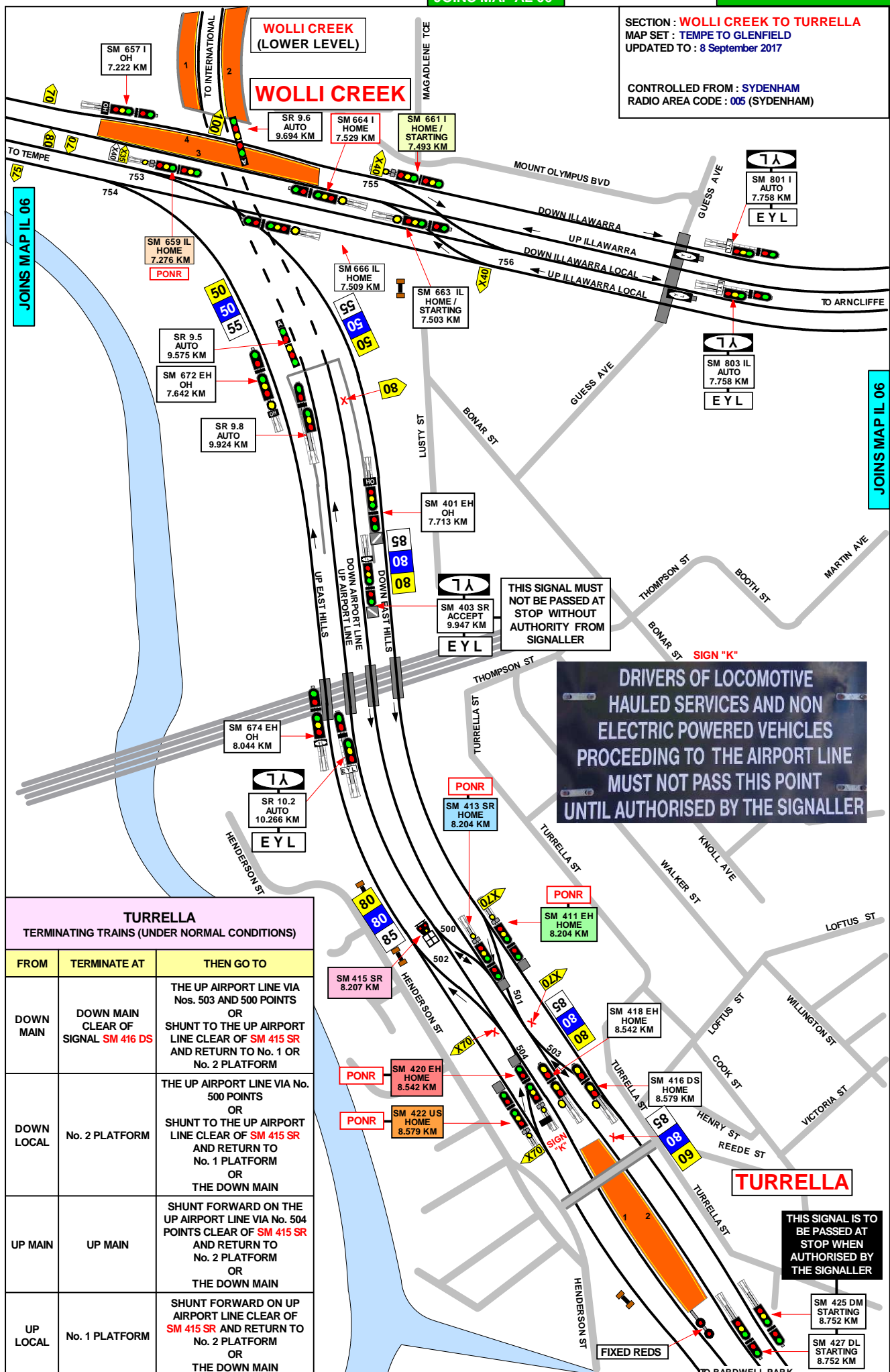
Copyright: Sydney Trains

Ownership: Geospatial Services,
Enterprise Asset Systems

Location: TRIM Record No.D2015/581

SECTION : WOLLI CREEK TO TURRELLA
 MAP SET : TEMPE TO GLENFIELD
 UPDATED TO : 8 September 2017
 CONTROLLED FROM : SYDENHAM
 RADIO AREA CODE : 005 (SYDENHAM)

GRADIENT
 1 IN 3300
 1 IN 40
 1 IN 42
 LEVEL
 1 IN 330



TURRELLA		
TERMINATING TRAINS (UNDER NORMAL CONDITIONS)		
FROM	TERMINATE AT	THEN GO TO
DOWN MAIN	DOWN MAIN CLEAR OF SIGNAL SM 416 DS	THE UP AIRPORT LINE VIA Nos. 503 AND 500 POINTS OR SHUNT TO THE UP AIRPORT LINE CLEAR OF SM 415 SR AND RETURN TO No. 1 OR No. 2 PLATFORM
DOWN LOCAL	No. 2 PLATFORM	THE UP AIRPORT LINE VIA No. 500 POINTS OR SHUNT TO THE UP AIRPORT LINE CLEAR OF SM 415 SR AND RETURN TO No. 1 PLATFORM OR THE DOWN MAIN
UP MAIN	UP MAIN	SHUNT FORWARD ON THE UP AIRPORT LINE VIA No. 504 POINTS CLEAR OF SM 415 SR AND RETURN TO No. 2 PLATFORM OR THE DOWN MAIN
UP LOCAL	No. 1 PLATFORM	SHUNT FORWARD ON UP AIRPORT LINE CLEAR OF SM 415 SR AND RETURN TO No. 2 PLATFORM OR THE DOWN MAIN

TURRELLA TERMINATING TRAINS (UNDER NORMAL CONDITIONS)		
FROM	TERMINATE AT	THEN GO TO
DOWN MAIN	DOWN MAIN CLEAR OF SIGNAL SM 416 DS	THE UP AIRPORT LINE VIA Nos. 503 AND 500 POINTS OR SHUNT TO THE UP AIRPORT LINE CLEAR OF SM 415 SR AND RETURN TO No. 1 OR No. 2 PLATFORM
DOWN LOCAL	No. 2 PLATFORM	THE UP AIRPORT LINE VIA No. 500 POINTS OR SHUNT TO THE UP AIRPORT LINE CLEAR OF SM 415 SR AND RETURN TO No. 1 PLATFORM OR THE DOWN MAIN
UP MAIN	UP MAIN	SHUNT FORWARD ON THE UP AIRPORT LINE VIA No. 504 POINTS CLEAR OF SM 415 SR AND RETURN TO No. 2 PLATFORM OR THE DOWN MAIN
UP LOCAL	No. 2 PLATFORM	SHUNT FORWARD ON UP AIRPORT LINE CLEAR OF SM 415 SR AND RETURN TO No. 2 PLATFORM OR THE DOWN MAIN

PONR POINT OF NO RETURN FOR DOWN TRAINS		
SIGNAL No.	LOCATION	DESTINATION
SM 413 SR	ON DOWN AIRPORT LINE LINE AT 8.204 KM	DOWN MAIN LINE OR DOWN LOCAL
SM 411 EH	ON DOWN DOWN EAST HILLS LINE AT 8.204 KM	DOWN MAIN LINE OR DOWN LOCAL
SM 420 EH	SYDNEY END OF TURRELLA PLATFORM No. 1 ON UP LOCAL	UP AIRPORT LINE OR UP EAST HILLS LINE
SM 422 US	UP MAIN AT TURRELLA ADJACENT TO SIGNAL SM 420 EH	UP AIRPORT LINE OR UP EAST HILLS LINE
SM 659 IL	APPROX. 336 METRES COUNTRY SIDE OF No. 2 PLATFORM TEMPE	EAST HILLS LINE

SIGN "K"



SECTION : **TEMPE TO TURRELLA**
 MAP SET : **TEMPE TO GLENFIELD**
 UPDATED TO : 8 September 2017

INFORMATION

CONTROLLED FROM : **SYDENHAM**
 RADIO AREA CODE : **005 (SYDENHAM)**

SIGNAL	DESTINATION	INDICATION
SM 659 IL	DOWN EAST HILLS	EH
	DOWN ILLAWARRA LOCAL	IL

SIGNAL	DESTINATION	INDICATION
SM 661 I	DOWN ILLAWARRA LOCAL	IL
	DOWN ILLAWARRA	I

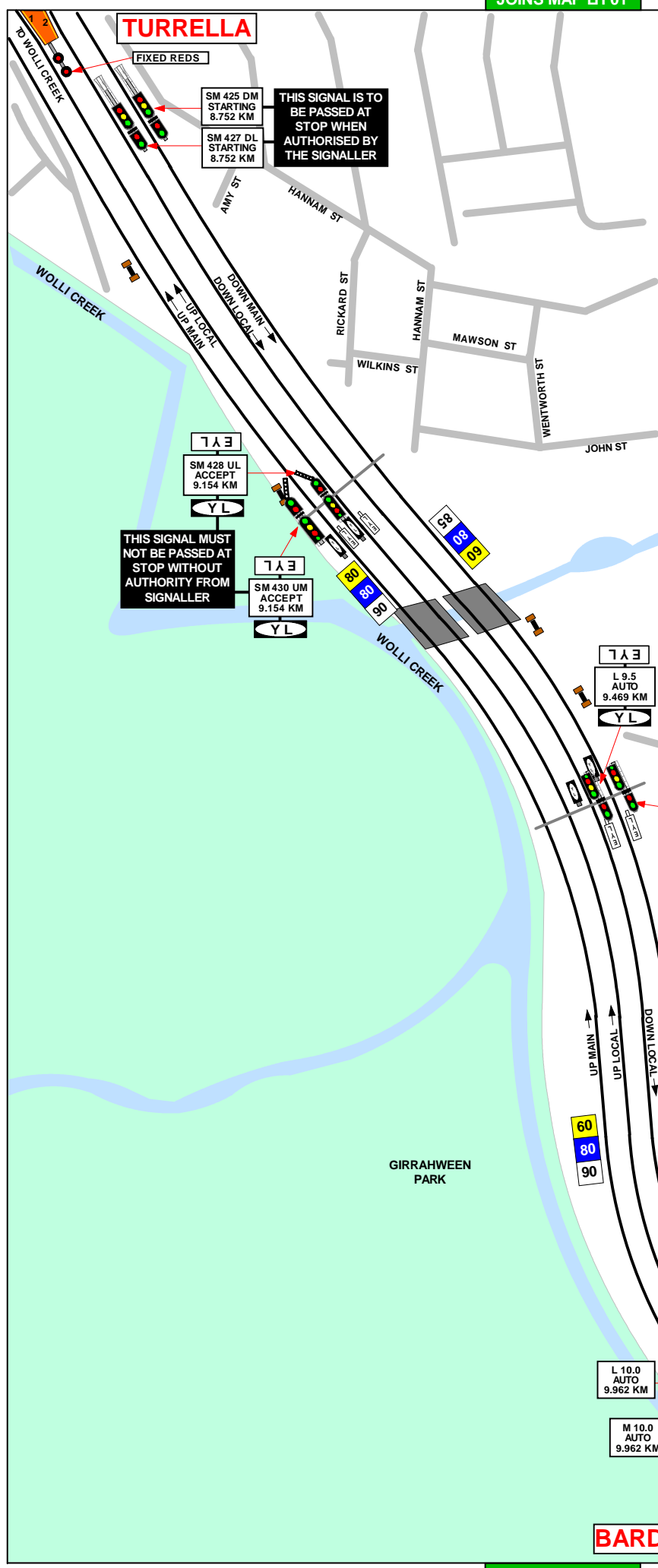
SIGNAL	DESTINATION	INDICATION
SM 415 SR	DOWN MAIN	DM
	DOWN LOCAL	DL
	UP LOCAL	UL

SIGNAL	DESTINATION	INDICATION
SM 413 SR	DOWN MAIN (M)	M
	DOWN MAIN (S)	DM
	DOWN LOCAL (M)	L
	DOWN LOCAL (S)	DL

SIGNAL	DESTINATION	INDICATION
SM 411 EH	DOWN MAIN (M)	M
	DOWN MAIN (S)	DM
	DOWN LOCAL (M)	L
	DOWN LOCAL (S)	DL

SIGNAL	DESTINATION	INDICATION
SM 422 US	UP EAST HILLS (M)	E
	UP EAST HILLS (S)	EH
	UP AL (M)	A
	UP AL (S)	AL

SIGNAL	DESTINATION	INDICATION
SM 420 EH	UP EAST HILLS (M)	E
	UP EAST HILLS (S)	EH
	UP AL (M)	A
	UP AL (S)	AL



SECTION : **TURRELLA TO BARDWELL PARK**
 MAP SET : TEMPE TO GLENFIELD
 UPDATED TO : 15 JULY 2014

INFORMATION

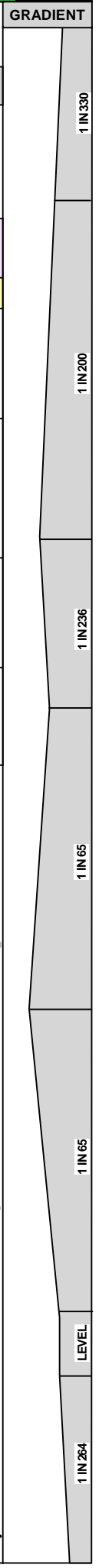
CONTROLLED FROM : SYDENHAM
 RADIO AREA CODE : 005 (SYDENHAM)
 : 059 (REVSBY)

SPECIAL POINTS OF INTEREST

TURRELLA

TURRELLA
 TERMINATING TRAINS (UNDER NORMAL CONDITIONS)

FROM	TERMINATE AT	THEN GO TO
DOWN MAIN	DOWN MAIN CLEAR OF SIGNAL SM 416 DS	THE UP AIRPORT LINE VIA Nos. 503 AND 500 POINTS OR SHUNT TO THE UP AIRPORT LINE CLEAR OF SM 415 SR AND RETURN TO No. 1 OR No. 2 PLATFORM
DOWN LOCAL	No. 2 PLATFORM	THE UP AIRPORT LINE VIA No. 500 POINTS OR SHUNT TO THE UP AIRPORT LINE CLEAR OF SM 415 SR AND RETURN TO No. 1 PLATFORM OR THE DOWN MAIN
UP MAIN	UP MAIN	SHUNT FORWARD ON THE UP AIRPORT LINE VIA No. 504 POINTS CLEAR OF SM 415 SR AND RETURN TO No. 2 PLATFORM OR THE DOWN MAIN
UP LOCAL	No. 1 PLATFORM	SHUNT FORWARD ON UP AIRPORT LINE CLEAR OF SM 415 SR AND RETURN TO No. 2 PLATFORM OR THE DOWN MAIN



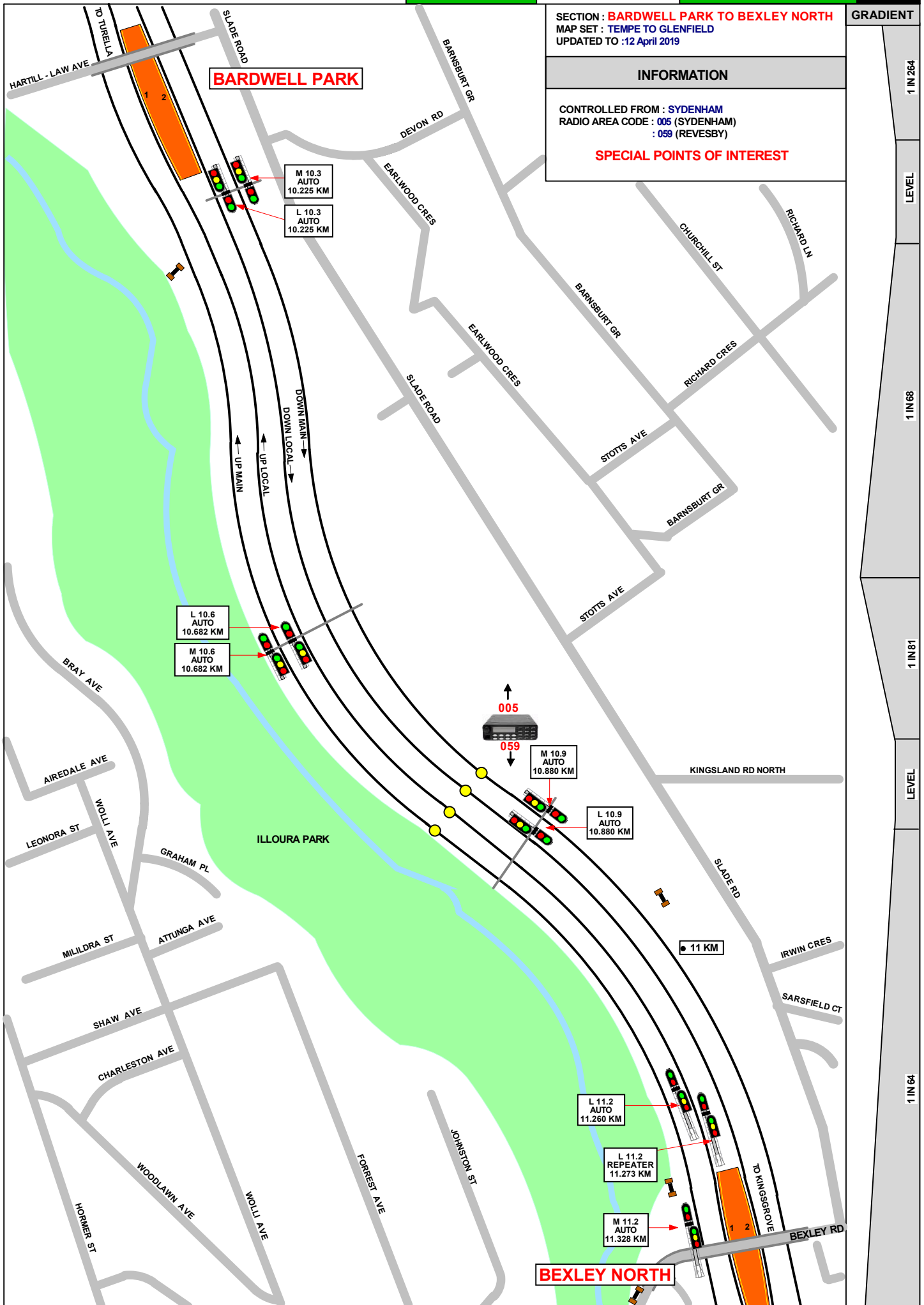
SECTION : **BARDWELL PARK TO BEXLEY NORTH**
MAP SET : **TEMPE TO GLENFIELD**
UPDATED TO : 12 April 2019

GRADIENT

INFORMATION

CONTROLLED FROM : **SYDENHAM**
RADIO AREA CODE : **005 (SYDENHAM)**
: **059 (REVESBY)**

SPECIAL POINTS OF INTEREST



1 IN 264

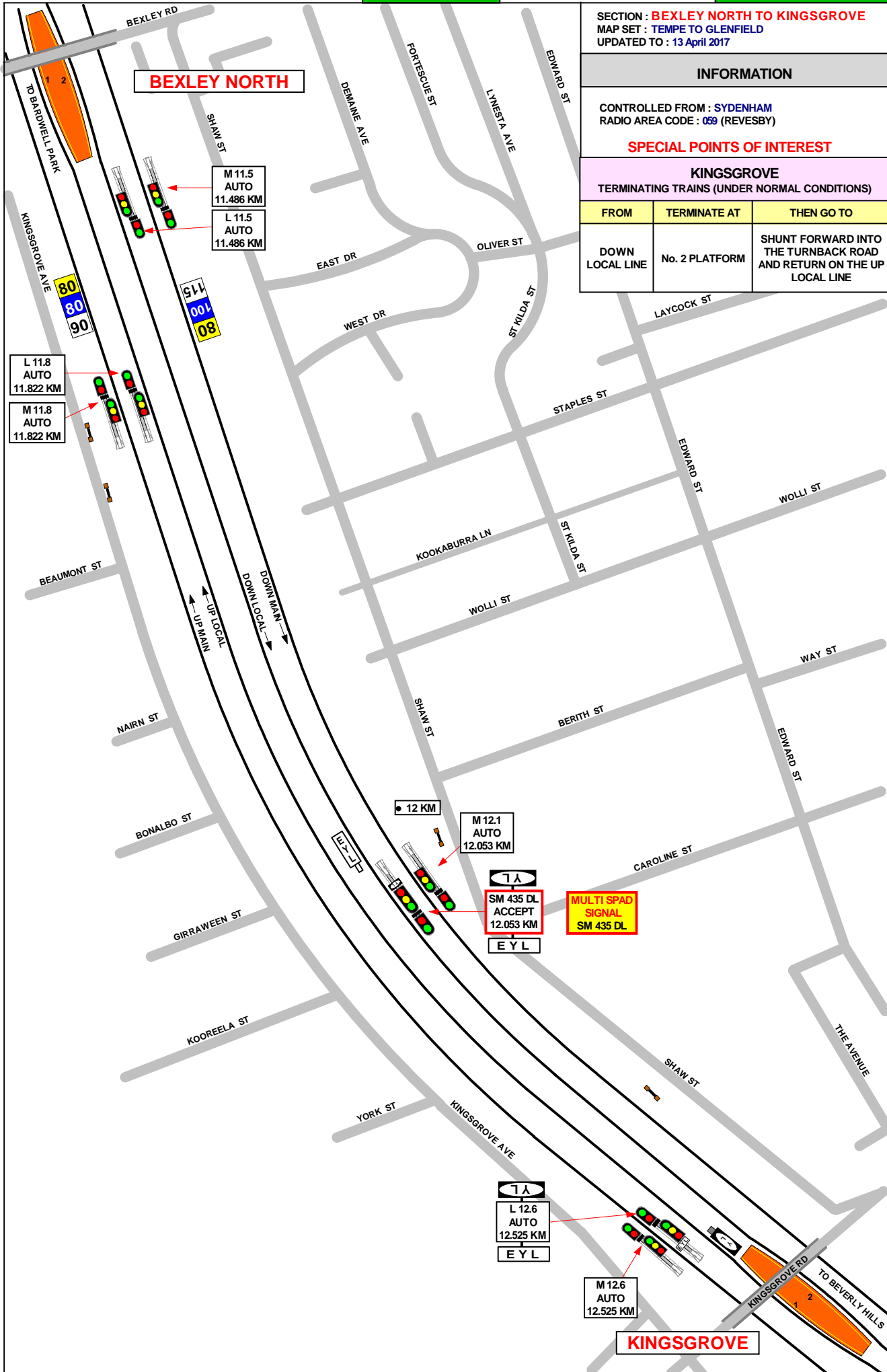
LEVEL

1 IN 68

1 IN 81

LEVEL

1 IN 64



SECTION : **BEXLEY NORTH TO KINGSGROVE**
 MAP SET : TEMPE TO GLENFIELD
 UPDATED TO : 13 April 2017

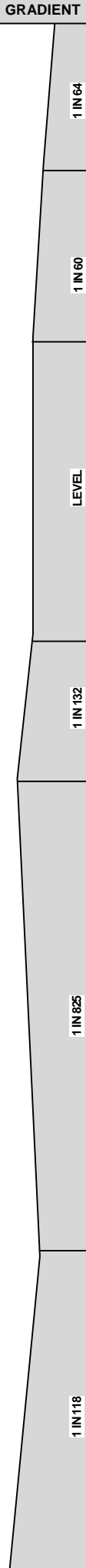
INFORMATION

CONTROLLED FROM : SYDENHAM
 RADIO AREA CODE : 059 (REVESBY)

SPECIAL POINTS OF INTEREST

KINGSGROVE
 TERMINATING TRAINS (UNDER NORMAL CONDITIONS)

FROM	TERMINATE AT	THEN GO TO
DOWN LOCAL LINE	No. 2 PLATFORM	SHUNT FORWARD INTO THE TURNBACK ROAD AND RETURN ON THE UP LOCAL LINE

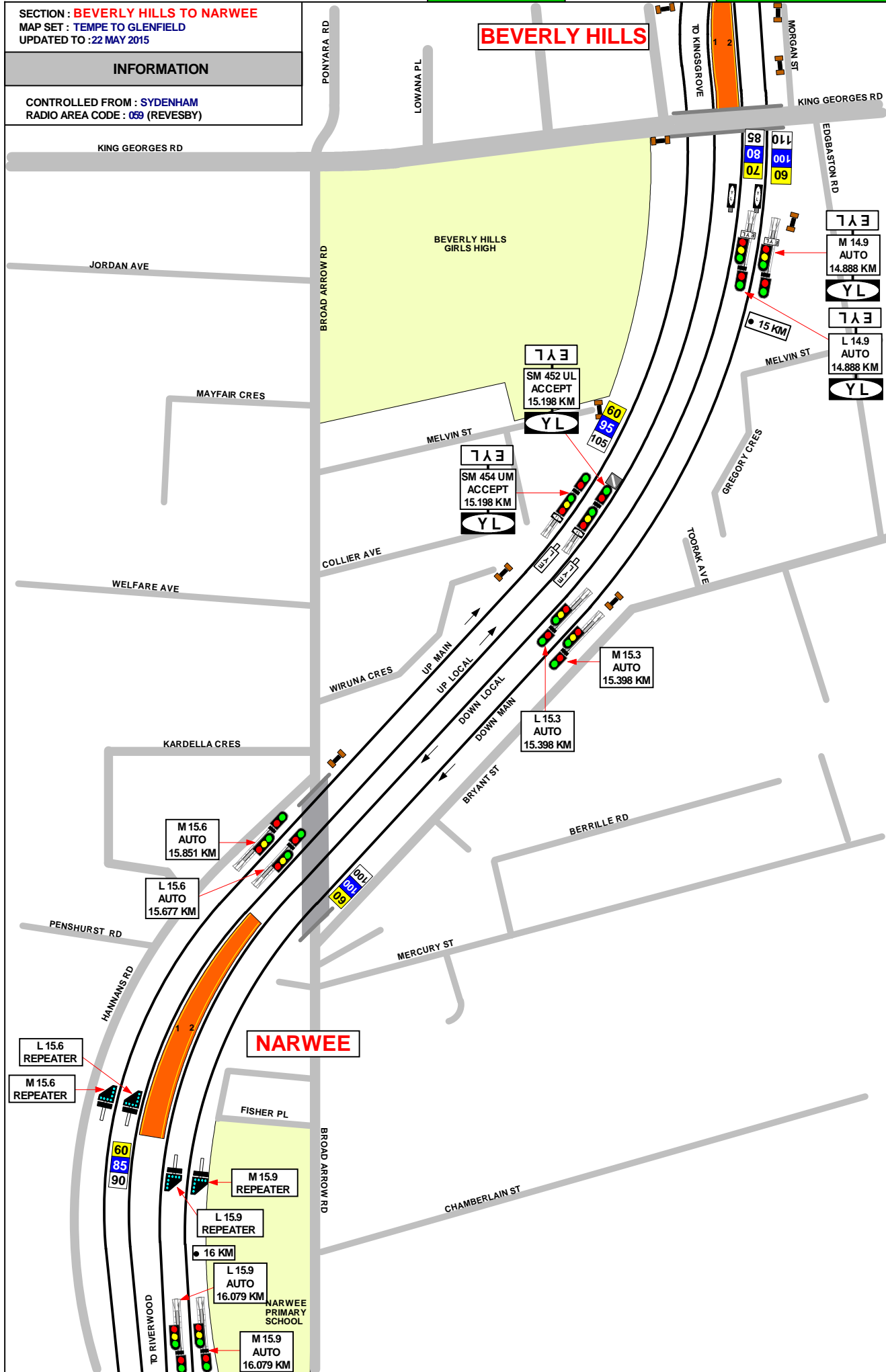


SECTION : **BEVERLY HILLS TO NARWEE**
 MAP SET : **TEMPE TO GLENFIELD**
 UPDATED TO : **22 MAY 2015**

INFORMATION

CONTROLLED FROM : **SYDENHAM**
 RADIO AREA CODE : **059 (REVESBY)**

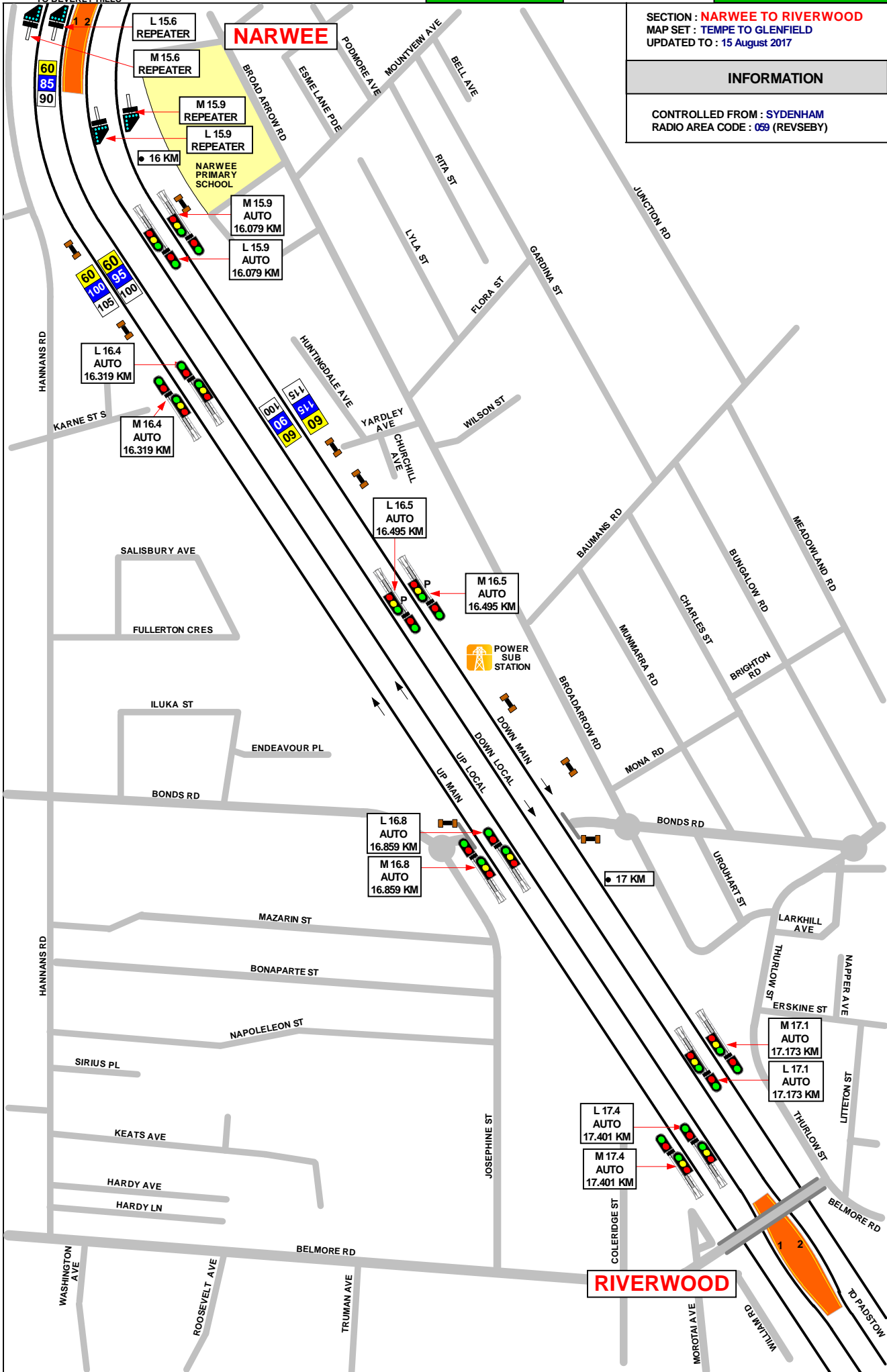
GRADIENT	LEVEL
1 IN 264	
1 IN 64	
1 IN 110	
1 IN 64	
1 IN 60	
	LEVEL
1 IN 364	
	LEVEL



SECTION : **NARWEE TO RIVERWOOD**
MAP SET : TEMPE TO GLENFIELD
UPDATED TO : 15 August 2017

GRADIENT

INFORMATION
CONTROLLED FROM : SYDENHAM
RADIO AREA CODE : 059 (REVSEBY)



SECTION : RIVERWOOD TO PADSTOW
MAP SET : TEMPE TO GLENFIELD
UPDATED TO : 8 March 2018

GRADIENT

INFORMATION

CONTROLLED FROM : SYDENHAM

RADIO AREA CODE : 059 (REVESBY)

1 IN 59

1 IN 64

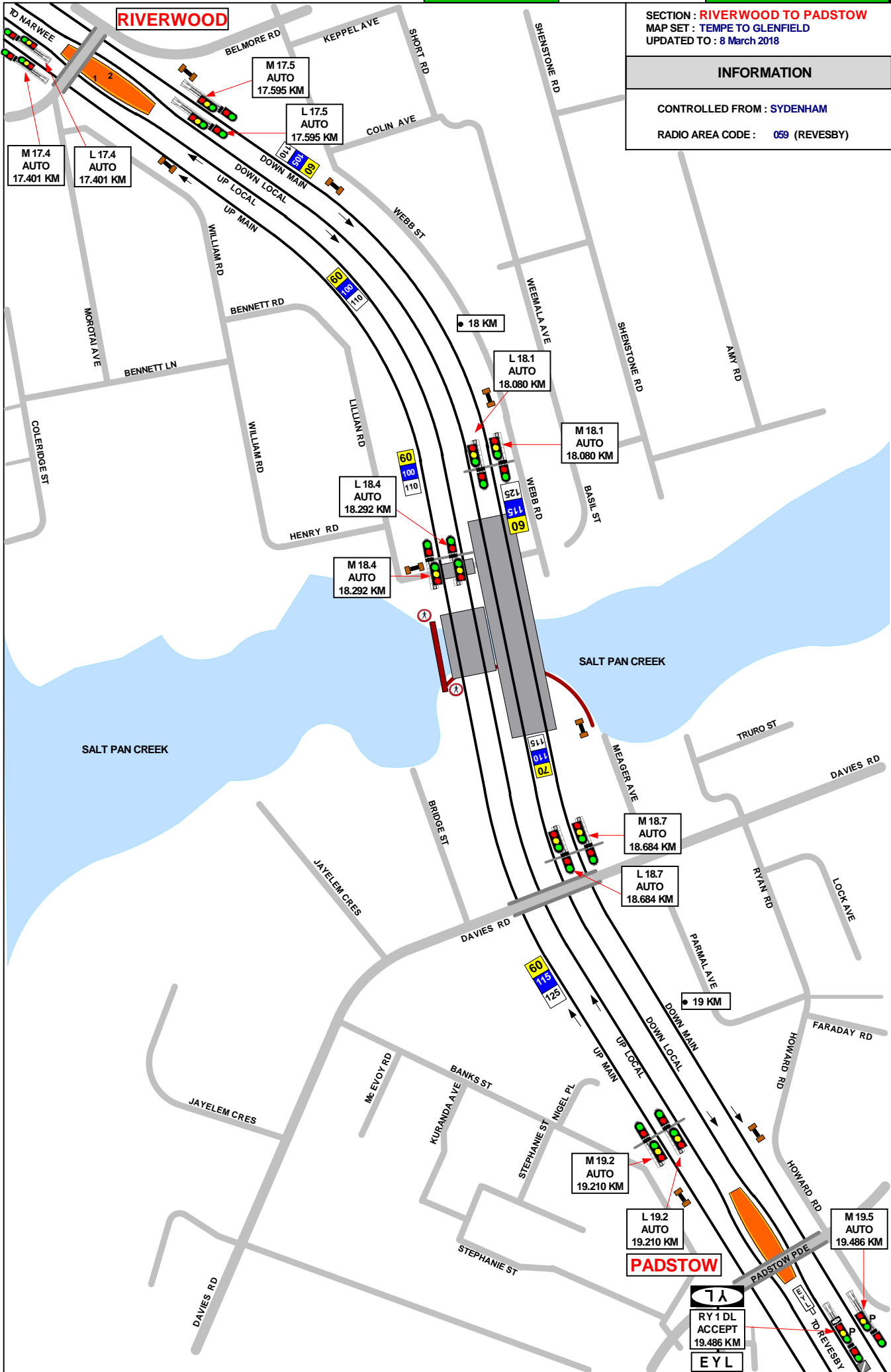
1 IN 60

LEVEL

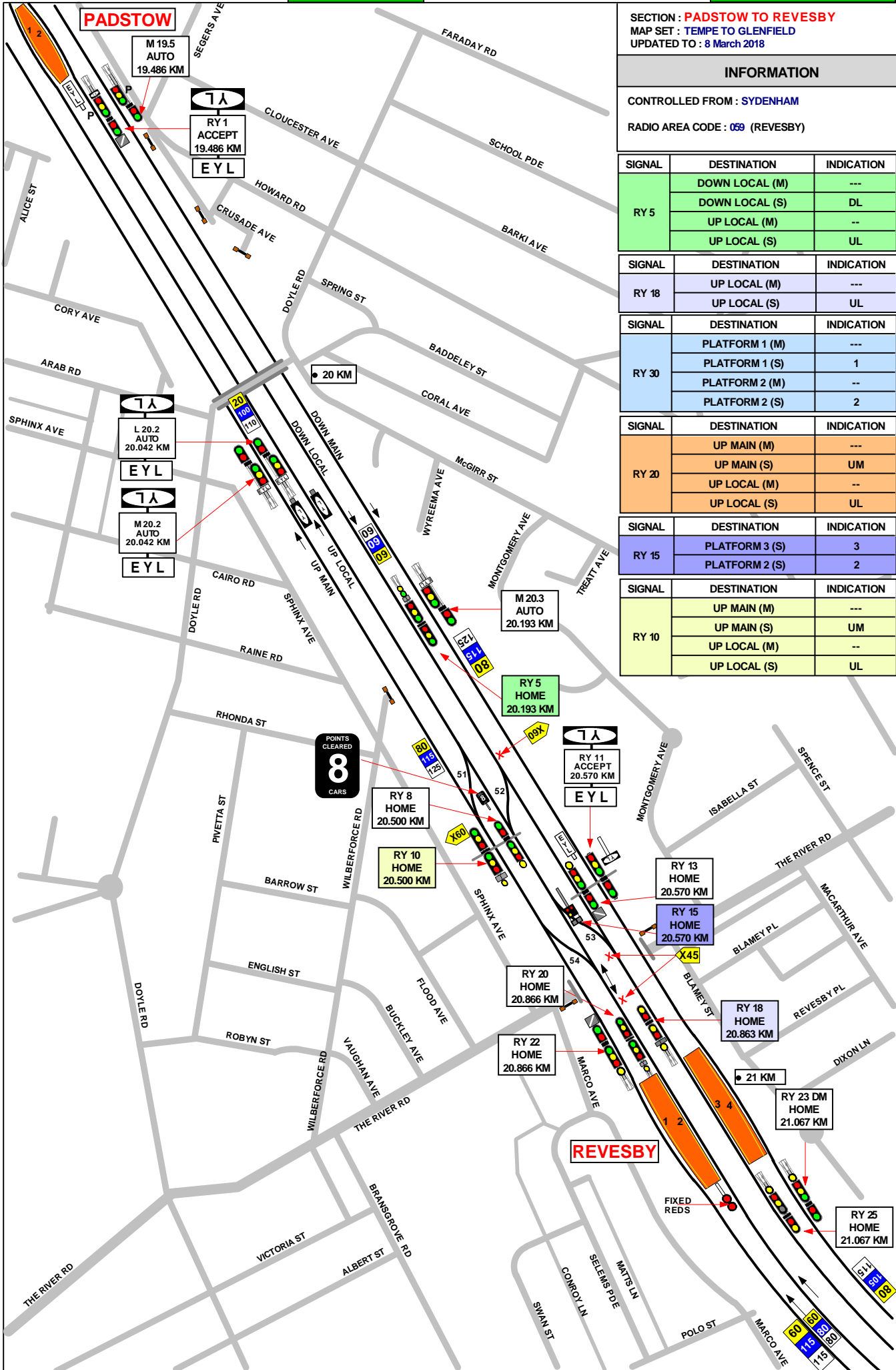
1 IN 63

1 IN 60

1 IN 60



7A
RY 1 DL
ACCEPT
19.486 KM
EYL



SECTION : **PADSTOW TO REVESBY**
 MAP SET : TEMPE TO GLENFIELD
 UPDATED TO : 8 March 2018

GRADIENT

INFORMATION

CONTROLLED FROM : SYDENHAM
 RADIO AREA CODE : 059 (REVESBY)

SIGNAL	DESTINATION	INDICATION
RY 5	DOWN LOCAL (M)	---
	DOWN LOCAL (S)	DL
	UP LOCAL (M)	--
	UP LOCAL (S)	UL

SIGNAL	DESTINATION	INDICATION
RY 18	UP LOCAL (M)	---
	UP LOCAL (S)	UL

SIGNAL	DESTINATION	INDICATION
RY 30	PLATFORM 1 (M)	---
	PLATFORM 1 (S)	1
	PLATFORM 2 (M)	--
	PLATFORM 2 (S)	2

SIGNAL	DESTINATION	INDICATION
RY 20	UP MAIN (M)	---
	UP MAIN (S)	UM
	UP LOCAL (M)	--
	UP LOCAL (S)	UL

SIGNAL	DESTINATION	INDICATION
RY 15	PLATFORM 3 (S)	3
	PLATFORM 2 (S)	2

SIGNAL	DESTINATION	INDICATION
RY 10	UP MAIN (M)	---
	UP MAIN (S)	UM
	UP LOCAL (M)	--
	UP LOCAL (S)	UL

1 IN 150

1 IN 140

1 IN 60

1 IN 264

1 IN 60

1 IN 825

SECTION : PANANIA TO EAST HILLS
 MAP SET : TEMPE TO GLENFIELD
 UPDATED TO : 15 JULY 2014

INFORMATION

CONTROLLED FROM : SYDENHAM
 RADIO AREA CODE : 059 (REVESBY)

SPECIAL POINTS OF INTEREST

EAST HILLS
 TERMINATING TRAINS (UNDER NORMAL CONDITIONS)

FROM	TERMINATE AT	THEN GO TO
DOWN MAIN LINE	No. 1 PLATFORM	UP MAIN LINE
DOWN MAIN LINE	No. 2 PLATFORM	UP MAIN LINE
UP MAIN LINE	No. 2 PLATFORM	SHUNT FORWARD AND RETURN TO DOWN MAIN LINE

SIGNAL	DESTINATION	INDICATION
EH 5	UP MAIN (S)	U
	TURNBACK ROAD (S)	T

SIGNAL	DESTINATION	INDICATION
3A 3B 3C	DOWN MAIN (S)	D
	UP MAIN (S)	U
	TURNBACK ROAD (S)	T

PONR
POINTS OF NO RETURN

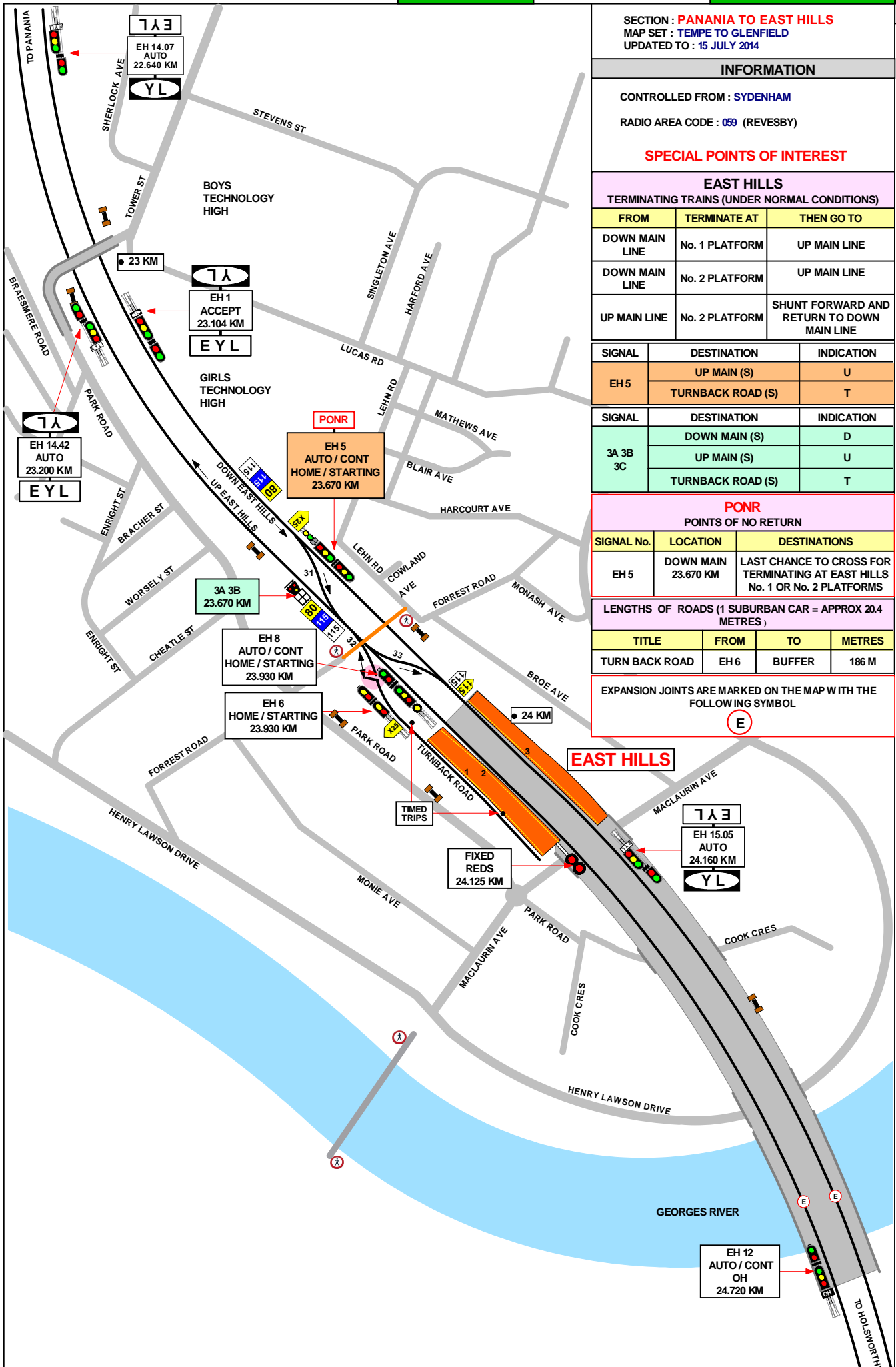
SIGNAL No.	LOCATION	DESTINATIONS
EH 5	DOWN MAIN 23.670 KM	LAST CHANCE TO CROSS FOR TERMINATING AT EAST HILLS No. 1 OR No. 2 PLATFORMS

LENGTHS OF ROADS (1 SUBURBAN CAR = APPROX 20.4 METRES)

TITLE	FROM	TO	METRES
TURN BACK ROAD	EH 6	BUFFER	186 M

EXPANSION JOINTS ARE MARKED ON THE MAP WITH THE FOLLOWING SYMBOL

(E)



GRADIENT

1 IN 825

1 IN 62

1 IN 264

1 IN 132

1 IN 200

1 IN 162

1 IN 280

LEVEL

SECTION : EAST HILLS TO HOLSWORTHY
MAP SET : TEMPE TO GLENFIELD
UPDATED TO : 15 July 2014

INFORMATION

CONTROLLED FROM : SYDENHAM

RADIO AREA CODE : 069 (REVESBY)
: 060 (GLENFIELD)

SPECIAL POINTS OF INTEREST

EXPANSION JOINTS ARE MARKED ON THE MAP WITH THE FOLLOWING SYMBOL



GRADIENT

1 IN 162

1 IN 280

LEVEL

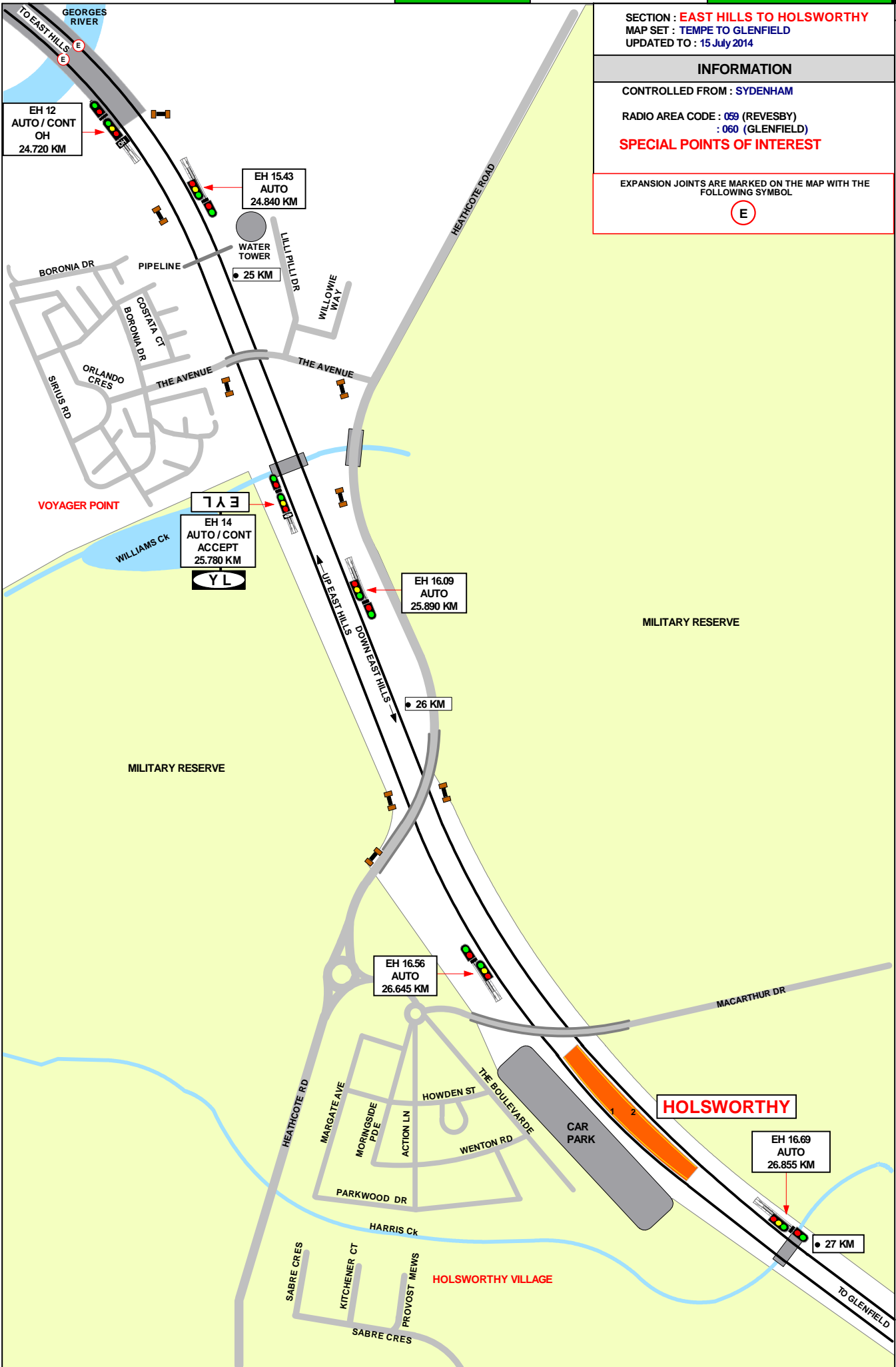
1 IN 107

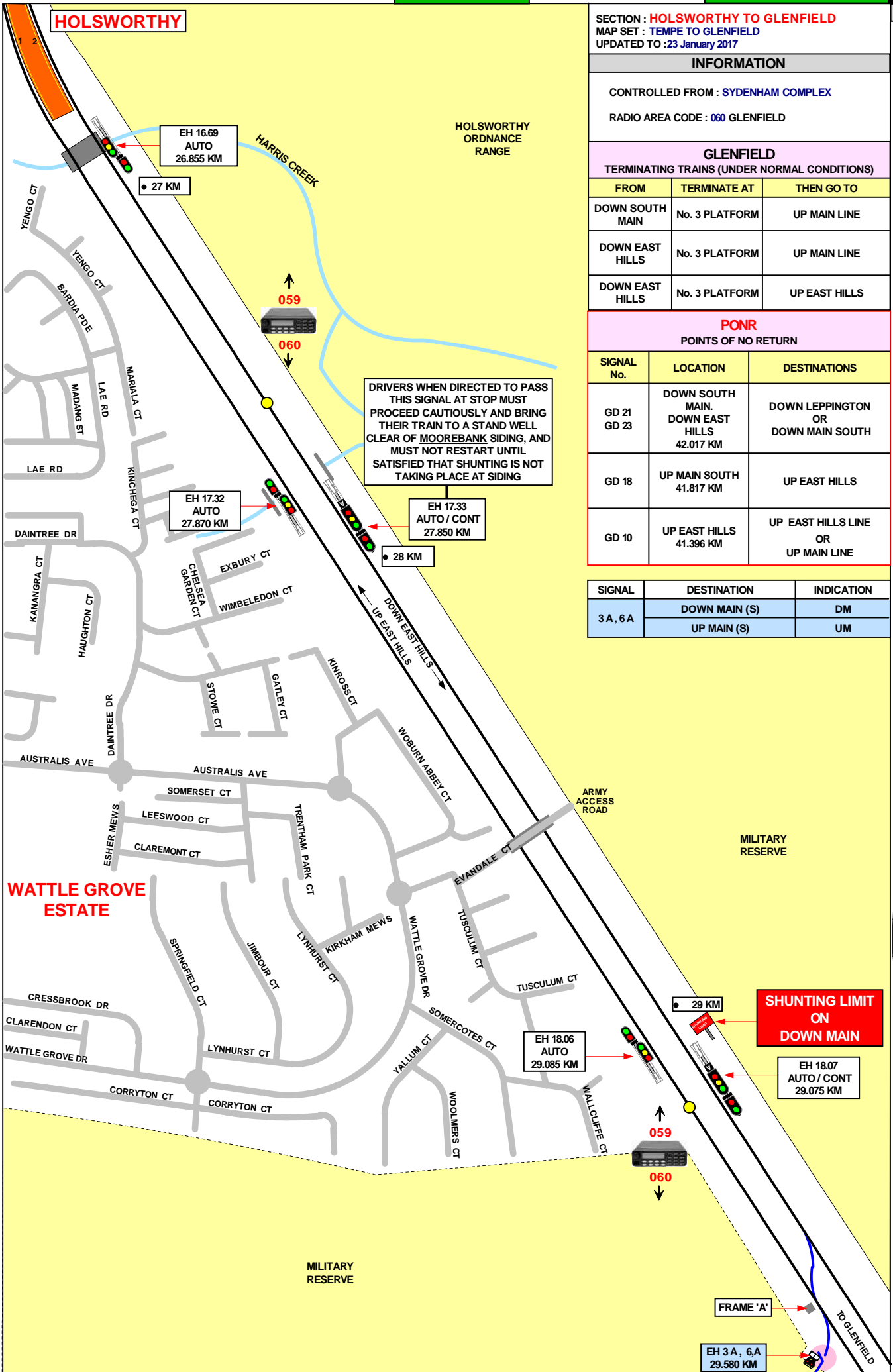
LEVEL

1 IN 200

LEVEL

1 IN 200





HOLSWORTHY

SECTION : **HOLSWORTHY TO GLENFIELD**
 MAP SET : TEMPE TO GLENFIELD
 UPDATED TO : 23 January 2017

GRADIENT

INFORMATION

CONTROLLED FROM : SYDENHAM COMPLEX
 RADIO AREA CODE : 060 GLENFIELD

GLENFIELD

TERMINATING TRAINS (UNDER NORMAL CONDITIONS)

FROM	TERMINATE AT	THEN GO TO
DOWN SOUTH MAIN	No. 3 PLATFORM	UP MAIN LINE
DOWN EAST HILLS	No. 3 PLATFORM	UP MAIN LINE
DOWN EAST HILLS	No. 3 PLATFORM	UP EAST HILLS

PONR

POINTS OF NO RETURN

SIGNAL No.	LOCATION	DESTINATIONS
GD 21 GD 23	DOWN SOUTH MAIN. DOWN EAST HILLS 42.017 KM	DOWN LEPPINGTON OR DOWN MAIN SOUTH
GD 18	UP MAIN SOUTH 41.817 KM	UP EAST HILLS
GD 10	UP EAST HILLS 41.396 KM	UP EAST HILLS LINE OR UP MAIN LINE

SIGNAL	DESTINATION	INDICATION
3 A, 6 A	DOWN MAIN (S)	DM
	UP MAIN (S)	UM

DRIVERS WHEN DIRECTED TO PASS THIS SIGNAL AT STOP MUST PROCEED CAUTIOUSLY AND BRING THEIR TRAIN TO A STAND WELL CLEAR OF **MOOREBANK** SIDING, AND MUST NOT RESTART UNTIL SATISFIED THAT SHUNTING IS NOT TAKING PLACE AT SIDING

SHUNTING LIMIT ON DOWN MAIN

1 IN 200

LEVEL

1 IN 200

LEVEL

SECTION : **HOLSWORTHY TO GLENFIELD**
 MAP SET : TEMPE TO GLENFIELD
 UPDATED TO : 28 JANUARY 2016

INFORMATION

CONTROLLED FROM : SYDENHAM COMPLEX
 RADIO AREA CODE : 060 (GLENFIELD)
 054 (SEFTON PARK)
SPECIAL POINTS OF INTEREST
GLENFIELD

GLENFIELD
 TERMINATING TRAINS (UNDER NORMAL CONDITIONS)

FROM	TERMINATE AT	THEN GO TO
DOWN SOUTH MAIN	No. 3 PLATFORM	UP MAIN LINE
DOWN EAST HILLS	No. 3 PLATFORM	UP MAIN LINE
DOWN EAST HILLS	No. 3 PLATFORM	UP EAST HILLS

SIGNAL	DESTINATION	INDICATION
GD 5	DN EAST HILLS (M)	---
	DN EAST HILLS (S)	EH
	DOWN MAIN (M)	---
	DOWN MAIN (S)	DM

SIGNAL	DESTINATION	INDICATION
GD 7	DN EAST HILLS (M)	---
	DN EAST HILLS (S)	EH
	DOWN MAIN (M)	---
	DOWN MAIN (S)	DM

SIGNAL	DESTINATION	INDICATION
GD 10	UP EAST HILLS (M)	---
	UP EAST HILLS (S)	EH
	UP MAIN (M)	---
	UP MAIN (S)	UM

SIGNAL	DESTINATION	INDICATION
GD 18	UP EAST HILLS (M)	---
	UP EAST HILLS (S)	EH
	UP MAIN (M)	---
	UP MAIN (S)	UM

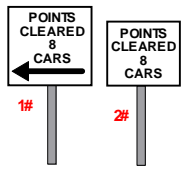
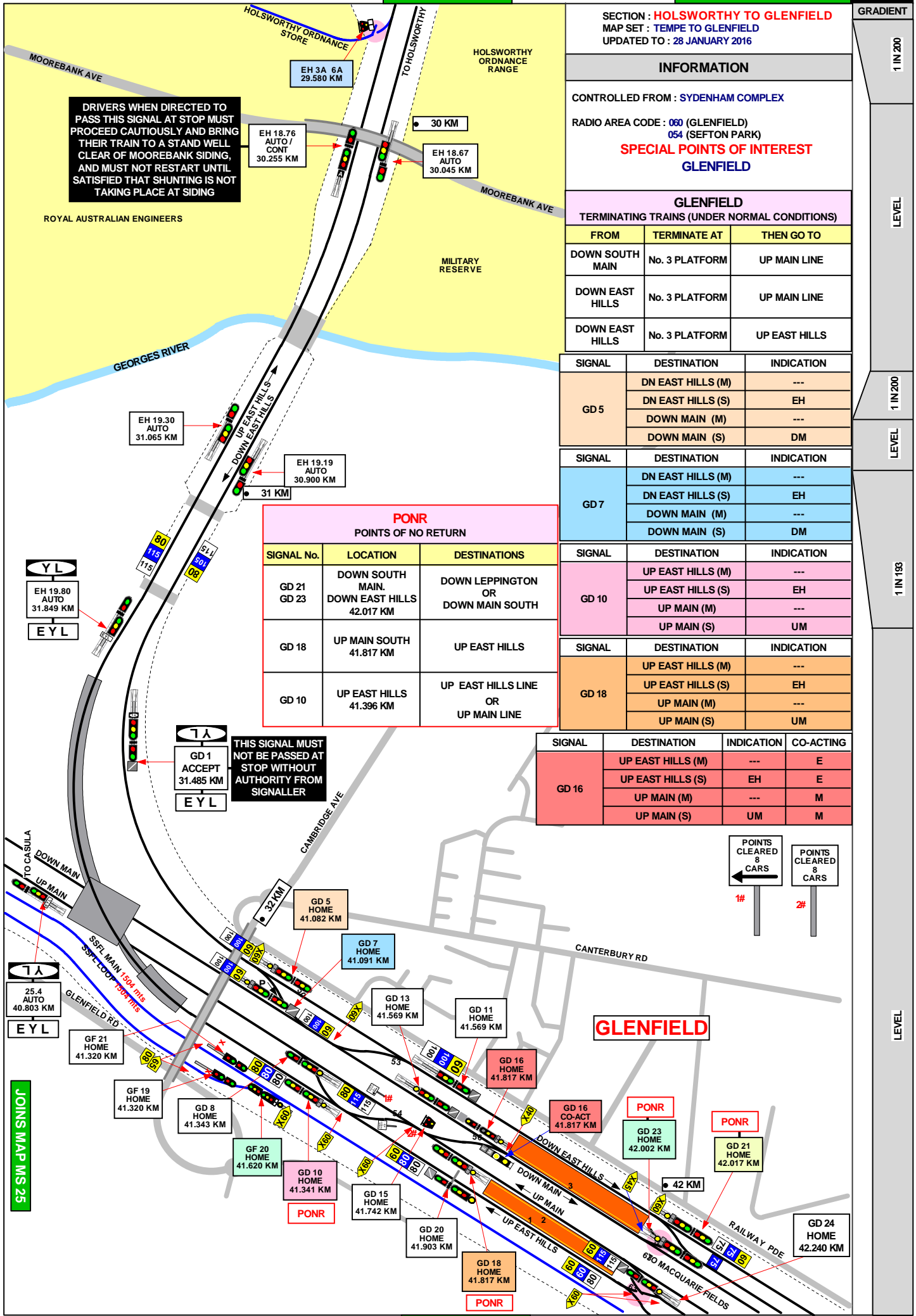
SIGNAL	DESTINATION	INDICATION	CO-ACTING
GD 16	UP EAST HILLS (M)	---	E
	UP EAST HILLS (S)	EH	E
	UP MAIN (M)	---	M
	UP MAIN (S)	UM	M

PONR
 POINTS OF NO RETURN

SIGNAL No.	LOCATION	DESTINATIONS
GD 21 GD 23	DOWN SOUTH MAIN. DOWN EAST HILLS 42.017 KM	DOWN LEPPINGTON OR DOWN MAIN SOUTH
GD 18	UP MAIN SOUTH 41.817 KM	UP EAST HILLS
GD 10	UP EAST HILLS 41.396 KM	UP EAST HILLS LINE OR UP MAIN LINE

THIS SIGNAL MUST NOT BE PASSED AT STOP WITHOUT AUTHORITY FROM SIGNALLER

DRIVERS WHEN DIRECTED TO PASS THIS SIGNAL AT STOP MUST PROCEED CAUTIOUSLY AND BRING THEIR TRAIN TO A STAND WELL CLEAR OF MOOREBANK SIDING, AND MUST NOT RESTART UNTIL SATISFIED THAT SHUNTING IS NOT TAKING PLACE AT SIDING



GRADIENT
 1 IN 200
 LEVEL
 1 IN 200
 LEVEL
 1 IN 193
 LEVEL