

TOA Worksite Protection for Stanwell Park Viaduct on the Up Illawarra Line

DOCUMENT NO.	D2023/7950
WORK DESCRIPTION	Routine Network Maintenance Activities
WPP Number	SC37A2 10119
SCOPE:	<p>This SWI is applicable for the worksite protection arrangements using TOA for routine access to Stanwell Park viaduct performed by South Coast Maintenance teams.</p> <p>Work activities include:</p> <ul style="list-style-type: none"> Routine preventative and corrective work such as inspections and maintenance as appropriate for the type of protection being applied as part of this plan.
AUTHORISATIONS:	<p>Protection Officer: Protection Officer Level 2 or higher.</p> <p>Placing TOA Protection: Hand Signaller Level 1 or higher, or Protection Officer Level 1 or higher.</p>
SAFETY CONTROLS – Track Occupancy Authority (TOA)	<p>The TOA limits are from:</p> <ul style="list-style-type: none"> WG 660 U and WG 699 U on the Up Illawarra line. <p>The Worksite is from:</p> <ul style="list-style-type: none"> WG 684 U to WG 680 U on the Up Illawarra Line <p>Protection is placed at:</p> <ul style="list-style-type: none"> Railway Track Signal protection and Worksite Protection Markers at 54+376 KM and 58+420 KM. 375, 373, 367 and 366 are clipped and locked to prevent access into the TOA
PRESTART REQUIREMENTS:	<p>Protection Officer assessment checklist must be completed before instructions in this SWI are followed.</p> <p>Tools and equipment required:</p> <ul style="list-style-type: none"> Protection Officer requires a phone to contact the Signaller. Qualified Workers placing protection require: <ul style="list-style-type: none"> - 6 x Railway Track Signals - 2 x Worksite Protection Markers 2 x Standard Point Clips, 2 x Tangential Point Clips, 4 x SL Locks and 2 x SL Key
FURTHER INFORMATION:	<p><i>NWT 300 Planning work in the Rail Corridor</i></p> <p><i>NWT 304 Track Occupancy Authority</i></p> <p><i>NPR 702 Using a Track Occupancy Authority</i></p> <p><i>NPR 707 Clipping points</i></p> <p><i>NRF 002 Track Occupancy Authority (TOA)</i></p> <p><i>NPR 712 Protecting work from rail traffic on adjacent lines</i></p> <p><i>NGE 200 Walking in the Danger Zone</i></p> <p><i>NLA 410 Sutherland to Wollongong</i></p>

Protection Officer assessment checklist

Protection Officer's name:		Yes (Tick if Yes)
This document has not expired 12 months beyond the issue date.		
On-site safety assessment has been completed and additional hazards and controls recorded on the pre-work briefing (Page 3).		
SWI details and protection arrangements have been reviewed and validated for the assessed worksite location.		
Corridor Safety Number	Protection Officer Signature	Date

Warning

If an above item does not apply, the Protection Officer must not use this Safe Work Instruction. A new worksite protection plan must be completed in accordance with NRF 014 Worksite Protection Pre-work briefing and NRF 015 Worksite Protection Plan.

TOA Worksite Protection for Stanwell Park Viaduct on the Up Illawarra Line



Worksite Protection Pre-work Briefing

Briefing date:

Protection Officer details

Work location:

Scope of work:

Worksite protection: Refer to Worksite Protection Plan for details

Hazards (e.g. Site specific hazards identified, including physical environment, human errors, plant and equipment)	Controls (to be implemented to eliminate or reduce the risk to the lowest practicable level)	Person responsible for Control
Approaching rail traffic	TOA implemented.	Protection Officer
Adjacent live lines	Designated work and walk areas as per Protection Officer's instructions. All work must stop when warned by Protection Officer until rail traffic has passed.	Protection Officer
Electrical infrastructure	Electrical infrastructure is to be treated as live and workers must maintain a safe approach distance as instructed by the Protection Officer or Workplace Supervisor.	Protection Officer and Workplace Supervisor
Mobile phone distraction	Mobile phone usage is only allowed in the Danger Zone when required for work purposes. Other than being used for work purposes, mobile phones may be used only in a safe place after informing the Protection Officer.	All

Safe Work Instruction

TOA Worksite Protection for Stanwell Park Viaduct on the Up Illawarra Line



Workplace Supervisor details

<input type="text" value="name"/>	<input type="text" value="contact No."/>
-----------------------------------	--

Emergency assembly point: SWMS/SWI Ref #:

First aid kit location: First aider:

Workplace Supervisor acknowledgement

The Workplace Supervisor acknowledges that all identified WHS and rail safety hazards have the appropriate controls in place to manage and/or eliminate the hazards. Yes

Participant Acknowledgement

NOTE: Recipients of the briefing are to question the Briefer if they don't understand any part of this briefing.

All workers listed below acknowledge that they:

- | | |
|---|---|
| <ol style="list-style-type: none">1. have been inducted to the site2. are free from alcohol and drugs3. are free from the effects of fatigue4. hold the applicable and current Rail Safety Worker Authorisation, trade licence and/or induction record e.g. Construction Industry Induction5. must wear the appropriate Personal Protective Equipment (PPE) | <ol style="list-style-type: none">6. have been briefed on the contents of the Worksite Protection Plan7. have been shown the Worksite Protection Plan diagram8. understand the kinds and limits of worksite protection in place9. have been briefed about any new hazards and controls identified during the final site inspection <i>(final site inspection must be conducted immediately before commencing work)</i> |
|---|---|

Mark each check box below with a tick if the item applies or a cross if the item does not apply.

- | | |
|---|---|
| <input type="checkbox"/> have been informed of the requirements of the electrical permit (if required) | <input type="checkbox"/> have been made aware of any hazardous materials/substances on site |
| <input type="checkbox"/> have been briefed on the SWMS/SWIs/documentated safe work practice for the job | <input type="checkbox"/> have been briefed on Safety Data Sheets (SDS) |
| <input type="checkbox"/> have been instructed in the controls recorded in this document and SWMS/SWIs | <input type="checkbox"/> have been briefed on the WHS Management plan |
| | <input type="checkbox"/> have been briefed on the hazards of adjoining worksites/processes. |

Name	Signature	Time of briefing: hh:mm	Amendment briefing: hh:mm and initial

TOA Worksite Protection for Stanwell Park Viaduct on the Up Illawarra Line



Worksite Protection Plan – Track Occupancy Authority

Signaller details

<input type="text" value="name"/>	Wollongong North Panel	02 4223 5446
-----------------------------------	-------------------------------	---------------------

Protection Officer details

<input type="text" value="name"/>	<input type="text" value="signature"/>	<input type="text" value="contact No."/>
<input type="text" value="RSW or RIW No."/>	<input type="text" value="designation"/>	Planned duration <input type="text"/>

Workplace Supervisor details:

Type of work:

Worksite location

on the	<input type="text" value="Up Illawarra"/>	
between	<input type="text" value="WG 680 U"/>	and <input type="text" value="WG 684 U"/>

The following are diagrams, notes, and detailed instructions. These are to be read and followed as part of this worksite protection plan for TOA.

INSTRUCTIONS:	<ol style="list-style-type: none"> 1. Workers enter the rail corridor via 100 58.463 at Seabank, Coalcliff 2. Protection Officer conducts the worksite protection pre-work briefing. 3. Protection Officer contacts the Signaller at Wollongong North Panel and requests TOA. 4. Protection Officer removes Half Pilot Staff from WG 660 U 5. Instruct Qualified Workers to place Railway Track Signal protection and Worksite Protection Markers at 58+420 KM and 54+376 KM on the Up Illawarra line. 6. Instruct Qualified Workers to clip and lock 375, 373, 367 and 366 points to prevent rail traffic entry into the TOA. 7. Protection Officer informs the workplace supervisor that it is safe for work to start. 8. Workers start work. 9. After all work is completed, move all workers and equipment into a safe place. 10. Instruct Qualified Workers to remove Railway Track Signal protection, Worksite Protection Markers and point clips from the TOA. 11. Workers egress the rail corridor via 100 58.463 at Seabank, Coalcliff 12. After all protection is removed, Protection Officer contacts the Signaller at Wollongong North Panel that work is complete, all protection has been removed from the line, workers and equipment are clear of the Danger Zone, confirms the restoration of the Half Pilot Staff and if any restrictions have been applied to fulfil the TOA.
ADDITIONAL DETAILS	Nil

TOA Worksite Protection for Stanwell Park Viaduct on the Up Illawarra Line

ACCESS/EGRESS:



Image 1: Access gate 100 58.463 Worksite and Coalcliff Side Protection Access and Egress (Lawrence Hargrave Dr)



Image 2: Access gate 100 52.758 U Otford Side Protection (Otford Road)

HALF PILOT STAFF



Image 3: Half Pilot Staff Coalcliff to Otford Up WG 660 U Worksite end of Coalcliff Platforms

TOA LIMITS:



Image 4: Coalcliff Side TOA limits WG 660 U



Image 5: Otford Side TOA limits WG 699 U

TOA Worksite Protection for Stanwell Park Viaduct on the Up Illawarra Line

POINTS TO BE CLIPPED AND LOCKED



Image 6: 373 A Points – Clip and Lock Normal



Image 7: 375 B Points – Clip and Lock Normal



Image 8: 367 A Points – Clip and Lock Normal

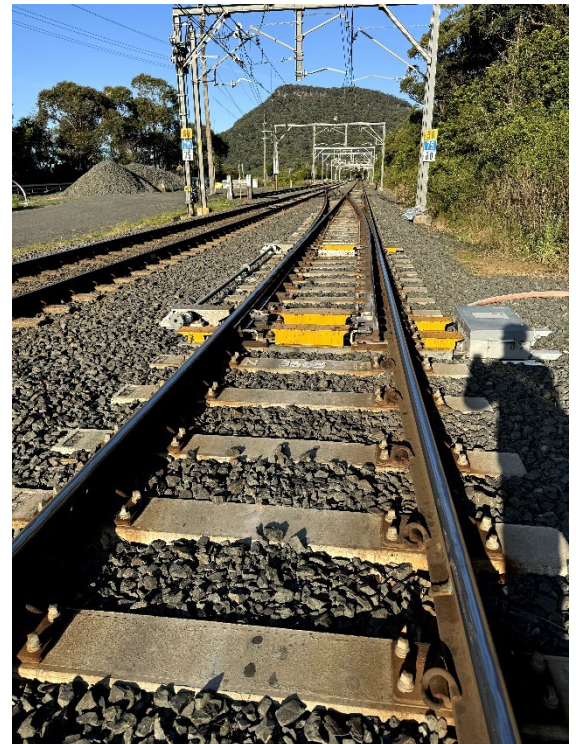
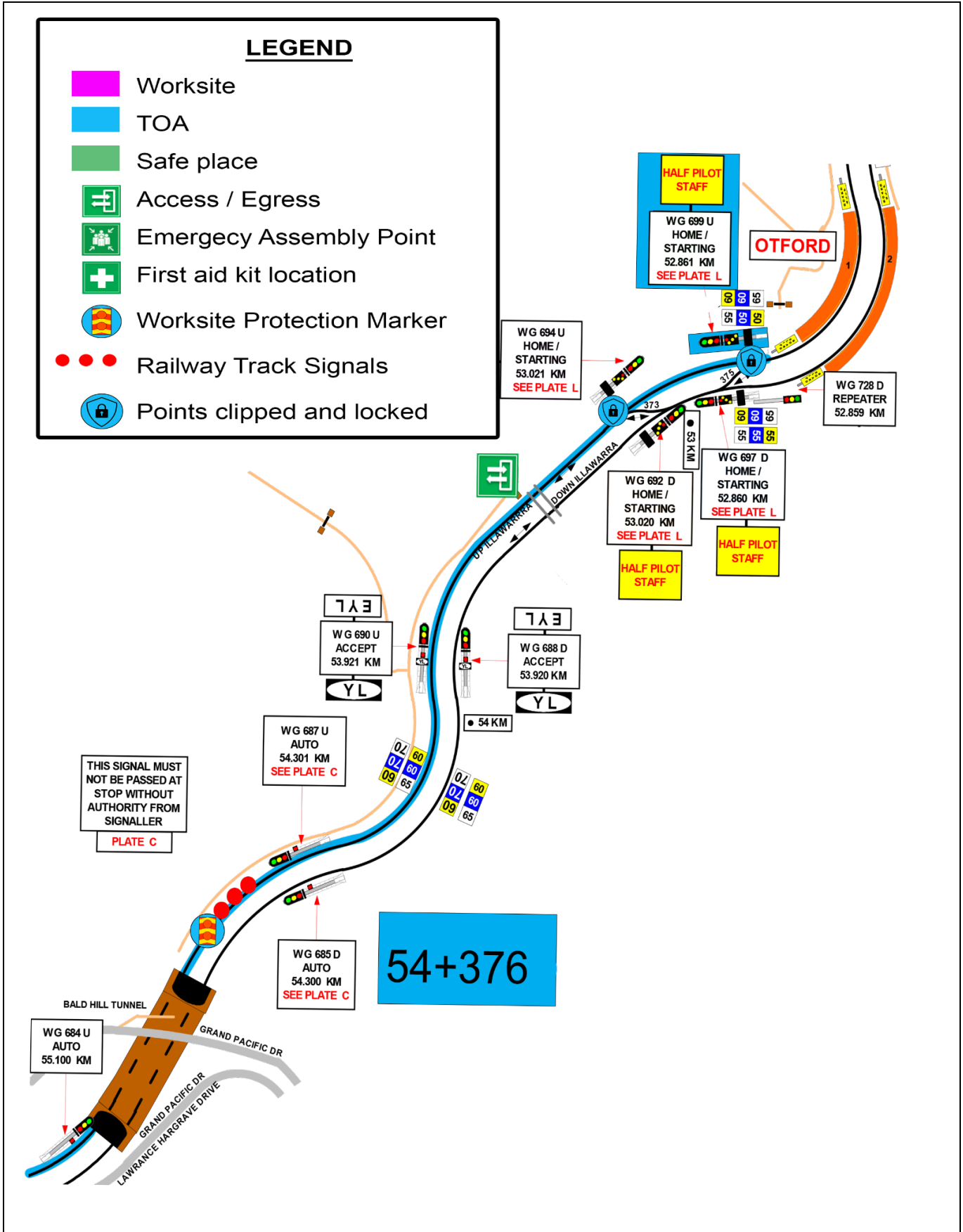


Image 9: 366 B Points – Clip and Lock Normal

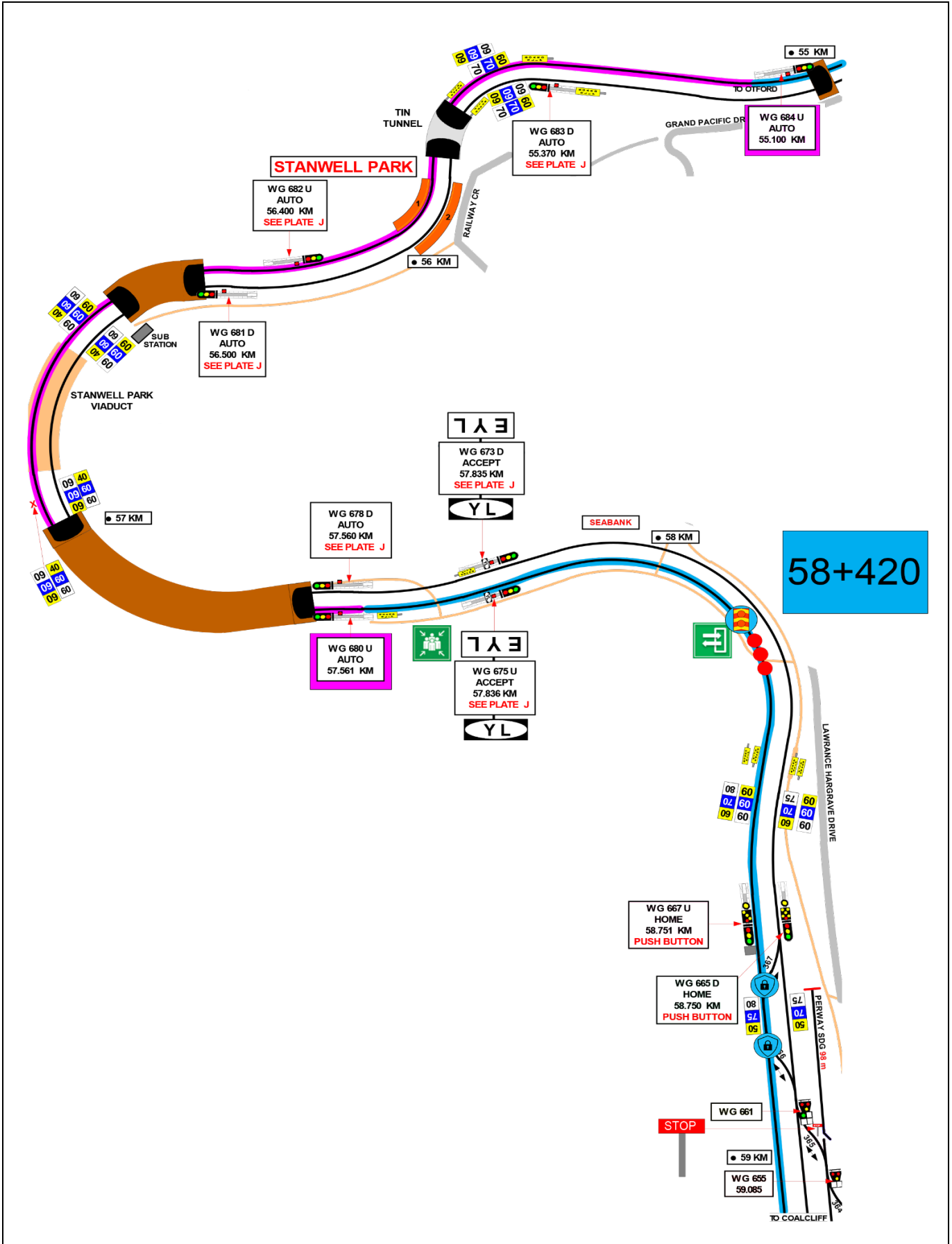
TOA Worksite Protection for Stanwell Park Viaduct on the Up Illawarra Line

Diagram



TOA Worksite Protection for Stanwell Park Viaduct on the Up Illawarra Line

Diagram cont.



TOA Worksite Protection for Stanwell Park Viaduct on the Up Illawarra Line

Diagram cont.

