

Safe Work Instruction

Lookout Working Worksite Protection for Bankstown routine network maintenance activities



DOCUMENT NO.	D2021/29395		
WORK DESCRIPTION	Routine network maintenance activities – Bankstown Points (lookout working)		
WPP Number	CW4B 10088	SAP Code	RWPP 5001
SCOPE:	<p>This SWI is applicable for the worksite protection arrangements using lookout working concerning routine network maintenance, defect management and repair of assets within the limits specified below and in the attached plan.</p> <p>Work activities include:</p> <ul style="list-style-type: none"> Routine preventative and corrective work such as inspections and maintenance as appropriate for the type of protection being applied as part of this plan. 		
AUTHORISATIONS:	<p>Protection Officer:</p> <ul style="list-style-type: none"> Protection Officer Level 1 or higher 		
SAFETY CONTROLS – Lookout Working arrangements:	<p>The nominated worksite location is:</p> <ul style="list-style-type: none"> Up Bankstown Line between SM 341 Signal and SM 346 Signal. Down Bankstown Line between SM 339 Signal and 363 Points. <p>The nominated worksite location for Lookout Working is a moving worksite, where workers are working along the track within the limits of the nominated worksite location up to the where the Lookout is established.</p> <p>As work moves along the track, the Protection Officer must assess the new location and:</p> <ul style="list-style-type: none"> Establish Lookouts as required to watch for approaching rail traffic from all entry points Designate and instruct which safe places the workers are to use as the work is completed along the work route within the worksite limits. 		
PRESTART REQUIREMENTS:	<p>Protection Officer assessment checklist must be completed before instructions in this SWI are followed.</p> <p>Tools and equipment required:</p> <ul style="list-style-type: none"> Protection Officer requires a phone to contact the Signaller. Lookouts require a high-visibility arm sleeve and a whistle / horn. 		
FURTHER INFORMATION:	<p><i>NWT 300 Planning work in the Rail Corridor</i></p> <p><i>NWT 310 Lookout Working</i></p> <p><i>NGE 200 Walking in the Danger Zone</i></p> <p><i>NPR 711 Using Lookouts</i></p> <p><i>NPR 751 Calculating Minimum Warning Time</i></p> <p><i>NPR 712 Protecting work from rail traffic on adjacent lines</i></p> <p><i>NLA 508 Sydenham – Sefton Park Junction</i></p> <p><i>Lookout Working Prohibited Locations Register</i></p>		

Safe Work Instruction**Lookout Working Worksite Protection for Bankstown routine network maintenance activities****Protection Officer assessment checklist**

Protection Officer name:		Yes <i>(Tick if Yes)</i>
This document is still current at the time of its application? (up to 12 months from the document issue date)		
SWI details and protection arrangements have been reviewed and validated for the assessed worksite location, including: <ul style="list-style-type: none"> On-site safety assessment has been completed for relevancy of works being undertaken The required protection details, environment and tasks are unchanged from the details of this SWI 		
<ul style="list-style-type: none"> The Protection Officer and Qualified Workers deploying qualifications are current and have practiced in the last 6 months. If not practiced, then a Rail Safety Coach must be contacted for guidance. 		
Corridor Safety Number	Protection Officer Signature	Date

Warning

If an above item does not apply, the Protection Officer must not use this Safe Work Instruction. A new worksite protection plan must be completed in accordance with NRF 014 Worksite Protection Pre-work briefing and NRF 015 Worksite Protection Plan.

Safe Work Instruction

Lookout Working Worksite Protection for Bankstown routine network maintenance activities



Worksite Protection Pre-work Briefing

Briefing date: / /

Protection Officer details

name signature contact No.

Work location: **Up and Down Bankstown line at Bankstown**

Scope of work: **Routine network maintenance activities – Bankstown Points**

Worksite protection: **Lookout Working** Refer to Worksite Protection Plan for details

Hazards (e.g. Site specific hazards identified, including physical environment, human errors, plant and equipment)	Controls (to be implemented to eliminate or reduce the risk to the lowest practicable level)	Person responsible for Control
<ul style="list-style-type: none"> Approaching rail traffic 	Lookouts must be trained and competent to perform lookout duties. Lookouts must be rotated if performing lookout for extended periods of time Workers to remain within worksite limits as set out in this procedure. Lookouts must be placed as per the protection plan attached to this document. . Workers are to stop work and move to a safe place immediately on being warned by the lookouts	Protection Officer & Lookout
<ul style="list-style-type: none"> Live adjacent lines 	Lookouts must provide warning to workers when rail traffic is approaching from the adjacent line in either direction.	Protection Officer & Lookout
<ul style="list-style-type: none"> Two - way running / multiple entry points into worksite 	One Lookout placed watching each direction before work starts. Lookouts are to warn workers of approaching rail traffic, including rail traffic entering or travelling within the worksite. Workers are to stop work and move to a safe place.	Protection Officer & Lookout
Obstruction to Minimum Sighting Distance	Lookouts must provide warning to the workers whenever their line of sight is obstructed by passing rail traffic. Workers must stop work and move to a safe place and reassess positioning and method	Protection Officer & Lookout
Adjoining/Surrounding Worksites	Lookouts must have two independent audible warning devices that can be heard by workers over any noise generated by adjoining/surrounding worksites. Lookouts are to provide warning if their line of sight is obstructed by adjoining/surrounding worksites.	Protection Officer & Lookout
Access to / Egress from worksite Slips, trips, falls and hazards carrying equipment	Access and egress points must be agreed prior to entering the danger zone, consideration should be given to ease of access and safest possible entry and exit points. Protection Officer will assess and instruct when it is safe for workers to use <i>NGE 200 Walking in the Danger Zone</i> to move to the worksite or safe place.	All
Mobile phone	Mobile phones use is not permitted in the danger zone unless being used by maintenance staff for critical maintenance communications or recording of defects.	All

Safe Work Instruction

Lookout Working Worksite Protection for Bankstown routine network maintenance activities



Safe Work Instruction

Lookout Working Worksite Protection for Bankstown routine network maintenance activities



Worksite Protection Plan – Lookout Working

Signaller details

name Sydenham Panel 02 9563 7137

Protection Officer details

name signature contact No. RSW or RIW No. designation Planned duration

Workplace Supervisor details:

Type of work: Routine network maintenance activities

Worksite Location: On the Up Bankstown line between Signal SM 341 and Signal SM 346. On the Dn Bankstown line between Signal SM 339 and 363 Points.

Worksite Assessment

Has the Lookout Working Prohibited Locations Register been consulted? Yes []

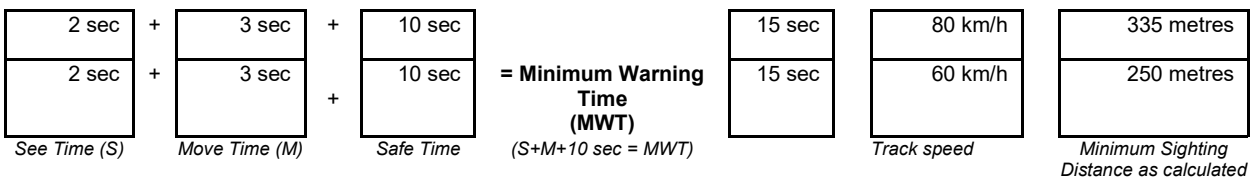
Warning method

Whistle/Horn Voice/Touch

Minimum Warning Time Calculations

Maximum track speed 80 km/h. Number of Lookouts used 2. Position of Lookouts 18.798 km to 19.149 km. Number of additional Lookouts* used -. Position of Lookouts - km To - km.

Note - Lookouts are relocated to positions within these KMs as workers move along the worksite.



Note – Additional MWT calculations can be recorded in the Protection Officer’s Diary.

Where are the safe places identified for the Lookouts and the workers?

Lookouts: Cess

Workers: Cess

Ensure the workers have been briefed about these work details Yes []

Diagrams, notes, and detailed instructions are over the next pages. These are to be read and followed as part of this worksite protection plan for Lookout Working.

Lookout Working Worksite Protection for Bankstown routine network maintenance activities

INSTRUCTIONS:

1. Workers enter the rail corridor using access gate **M24 18.965 U, off Marion Street**
2. Protection Officer conducts the worksite protection pre-work briefing.
3. Protection Officer contacts Sydenham panel to tell the Signaller of the use of Lookout Working on the Up and Down Bankstown lines at Bankstown and provides the worksite limits.
4. Establish Lookouts at the designated set of points watching for both Up and Down direction rail traffic approach.
5. Workers start work on the designated set of points.
6. Workers move to a safe place once work is completed on designated set of points.
7. Re-establish Lookouts at the next designated set of points, watching for Up and Down direction rail traffic approach.
8. Repeats steps 4 - 7 until the work is complete.
9. Move workers to a safe place.
10. Move Lookouts to a safe place.
11. Protection Officer ends Lookout Working by contacting Sydenham panel to tell the Signaller that work is complete, and all workers and equipment are in a safe place.
12. Exit the rail corridor using the designated egress point **M24 18.965 U.**

LOOKOUTS

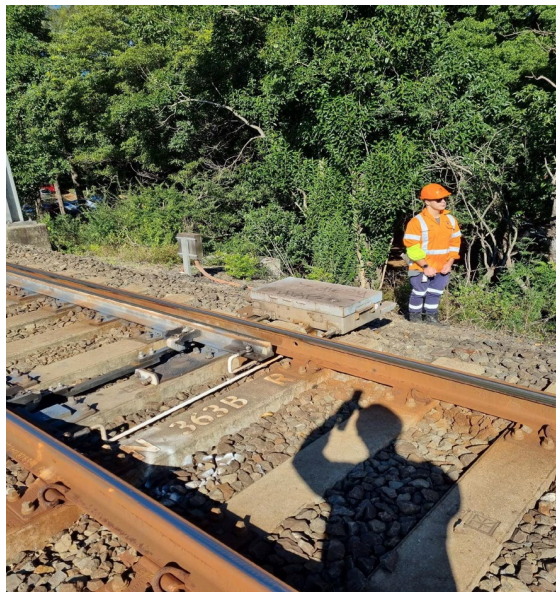


Image 1: Lookout position on the **Down Bankstown line** at **19.157 KM** watching for rail traffic on **Up Bankstown**, for work on **363 points**.



Image 2: Lookout position on the **Down Bankstown line** at **18.890 KM** watching for rail traffic on **Up Bankstown**, for work on **361 points** and **362 points**.



Image 3: Lookout position on the **Down Bankstown line** at **18.820 KM** watching for rail traffic on the **Down Bankstown**, for work on **361 points** and **362 points**.



Image 4: Lookout position on the **Down Bankstown line** at **19.000 KM** watching for rail traffic on the **Down Bankstown line**, for work on **363 points**.

**ACCESS/
EGRESS**



Image 5: Access gate **M24 18.965 U – Depot PI** via **Marion St.**



Image 6: Access gate **M24 18.965** to access **361 points** and **362 points**.

Safe Work Instruction

Lookout Working Worksite Protection for Bankstown routine network maintenance activities



Diagram

