

DOCUMENT NO.	D2023/1863
WORK DESCRIPTION	To be used when accessing Stanwell Park Viaduct – Down Main
WPP Number	SC17A2 10113
SCOPE:	<p>This SWI is applicable for the worksite protection arrangements using a Track Occupancy Certificate (TOA) concerning routine network maintenance, defect management and repair of assets within the limits specified below and in the attached plan.</p> <p>Work activities include:</p> <ul style="list-style-type: none"> Routine preventative and corrective work such as inspections and maintenance as appropriate for the type of protection being applied as part of this plan.
AUTHORISATIONS:	<p>Protection Officer: Protection Officer Level 2 or higher.</p> <p>Placing TOA Protection: Handsignaller Level 1 or higher, or Protection Officer Level 2 or higher.</p>
SAFETY CONTROLS – Track Occupancy Authority (TOA)	<p>The nominated TOA limits are:</p> <ul style="list-style-type: none"> WG 658 D and WG 697 D on the Down Illawarra line. <p>The nominated worksite location is:</p> <ul style="list-style-type: none"> 56.000KM and 58.000Km on the Down Illawarra Line. <p>Protection is placed at:</p> <ul style="list-style-type: none"> Railway Track Signal protection and Worksite Protection Markers at 55.000 KM and 58.500 KM.
PRESTART REQUIREMENTS:	<p>Protection Officer assessment checklist must be completed before instructions in this SWI are followed.</p> <p>Tools and equipment required:</p> <ul style="list-style-type: none"> Protection Officer requires a phone to contact the Signaller. Qualified Workers placing protection require: <ul style="list-style-type: none"> 6 x Railway Track Signals 2 x Worksite Protection Markers
FURTHER INFORMATION:	<p><i>NWT 300 Planning work in the Rail Corridor</i></p> <p><i>NWT 304 Track Occupancy Authority</i></p> <p><i>NPR 702 Using a Track Occupancy Authority</i></p> <p><i>NRF 002 Track Occupancy Authority (TOA)</i></p> <p><i>NPR 712 Protecting work from rail traffic on adjacent lines</i></p> <p><i>NGE 200 Walking in the Danger Zone</i></p> <p><i>NPR 726 Using Half Pilot Staffs</i></p> <p><i>NPR 709 Using Railway Track Signals</i></p> <p><i>NLA 410 Sutherland to Wollongong</i></p>

Protection Officer assessment checklist

Protection Officer's name:		Yes (Tick if Yes)
This document has not expired 12 months beyond the issue date.		
On-site safety assessment has been completed and additional hazards and controls recorded on the pre-work briefing (Page 3).		
SWI details and protection arrangements have been reviewed and validated for the assessed worksite location.		
Corridor Safety Number	Protection Officer Signature	Date

Warning

If an above item does not apply, the Protection Officer must not use this Safe Work Instruction. A new worksite protection plan must be completed in accordance with NRF 014 Worksite Protection Pre-work briefing and NRF 015 Worksite Protection Plan.

Worksite Protection Pre-work Briefing

Briefing date:

Protection Officer details

<input type="text" value="name"/>	<input type="text" value="signature"/>	<input type="text" value="contact No."/>
-----------------------------------	--	--

Work location: Scope of work: Worksite protection: Refer to Worksite Protection Plan for details

Hazards (e.g. Site-specific hazards identified, including physical environment, human errors, plant, and equipment)	Controls (to be implemented to eliminate or reduce the risk to the lowest practicable level)	Person responsible for Control
Approaching rail traffic	TOA implemented.	Protection Officer
Adjacent live lines	Designated work and walk areas as per Protection Officer's instructions. All work must stop when warned by Protection Officer until rail traffic has passed.	Protection Officer
Electrical infrastructure	Electrical infrastructure is to be treated as live and workers must maintain a safe approach distance as instructed by the Protection Officer or Workplace Supervisor.	Protection Officer & Workplace Supervisor
Mobile phone distraction	Mobile phone usage is only allowed in the Danger Zone when required for work purposes. Other than being used for work purposes, mobile phones may be used only in a safe place after informing the Protection Officer.	All

Safe Work Instruction

TOA Worksite Protection for Stanwell Park Viaduct – Down Main



Workplace Supervisor details

name [] contact No. []
Emergency assembly point: **Access Gate** SWMS/SWI Ref #: []
First aid kit location: **Sydney Trains work vehicle** First aider: []

Workplace Supervisor acknowledgement

The Workplace Supervisor acknowledges that all identified WHS and rail safety hazards have the appropriate controls in place to manage and/or eliminate the hazards.

Yes

signature []

Participant Acknowledgement

NOTE: Recipients of the briefing are to question the Briefer if they don't understand any part of this briefing.

All workers listed below acknowledge that they:

1. have been inducted to the site	6. have been briefed on the contents of the Worksite Protection Plan
2. are free from alcohol and drugs	7. have been shown the Worksite Protection Plan diagram
3. are free from the effects of fatigue	8. understand the kinds and limits of worksite protection in place
4. hold the applicable and current Rail Safety Worker Authorisation, trade licence and/or induction record e.g. Construction Industry Induction	9. have been briefed about any new hazards and controls identified during the final site inspection (<i>final site inspection must be conducted immediately before commencing work</i>)
5. must wear the appropriate Personal Protective Equipment (PPE)	

Mark each check box below with a tick if the item applies or a cross if the item does not apply.

<input type="checkbox"/> have been informed of the requirements of the electrical permit (if required)	<input type="checkbox"/> have been made aware of any hazardous materials/substances on site
<input type="checkbox"/> have been briefed on the SWMS/SWIs/documented safe work practice for the job	<input type="checkbox"/> have been briefed on Safety Data Sheets (SDS)
<input type="checkbox"/> have been instructed in the controls recorded in this document and SWMS/SWIs	<input type="checkbox"/> have been briefed on the WHS Management plan
	<input type="checkbox"/> have been briefed on the hazards of adjoining worksites/processes.

Name	Signature	Time of briefing: hh:mm	Amendment briefing: hh:mm and initial

Safe Work Instruction

TOA Worksite Protection for Stanwell Park Viaduct – Down Main



Worksite Protection Plan – Track Occupancy Authority

Signaller details

<input type="text" value="name"/>	Wollongong North Panel	02 4223 5446
-----------------------------------	-------------------------------	---------------------

Protection Officer details

<input type="text" value="name"/>	<input type="text" value="signature"/>	<input type="text" value="contact No."/>
<input type="text" value="RSW or RIW No."/>	<input type="text" value="designation"/>	Planned duration <input type="text"/>

Workplace Supervisor details:

Type of work: **Routine network maintenance activities**

Worksite location

on the	Down Illawarra	
between	56.000KM	and 58.000KM

The following are diagrams, notes, and detailed instructions.
These are to be read and followed as part of this worksite protection plan for TOA.

INSTRUCTIONS:	<ol style="list-style-type: none"> 1. Workers enter the rail corridor via Access Gate 100 55.954 D off Railway Crescent 2. Protection Officer conducts the worksite protection pre-work briefing. 3. Protection Officer contacts the Signaller at Wollongong North Panel and requests TOA. 4. Once TOA is authorised, instruct Qualified Workers to place Railway Track Signal protection and Worksite Protection Markers at 55.000 KM and 58.500 KM on the Down Illawarra line. 5. Once TOA is authorised and protected then the Protection Officer can inform the workplace supervisor that it is safe for workers to access track. 6. Workers start work. 7. After all work is completed, move all workers and equipment into a safe place. 8. Instruct Qualified Workers to remove Railway Track Signal protection and Worksite Protection Markers from the TOA. 9. After all protection is removed, Protection Officer contacts the Signaller at Wollongong North Panel that work is complete, all protection has been removed from the line, workers and equipment are clear of the Danger Zone and if any restrictions have been applied to fulfil the TOA. 10. Workers egress the rail corridor via Access Gate 100 55.954 D onto Railway Crescent
ADDITIONAL DETAILS	

Half-Pilot Staff



Image 1: Half Pilot Staff Coalcliff to Otford Down (Off the Otford end of Coalcliff Platform)

TOA LIMITS



Image 2: Otford Side TOA Limits WG 697 D Signal

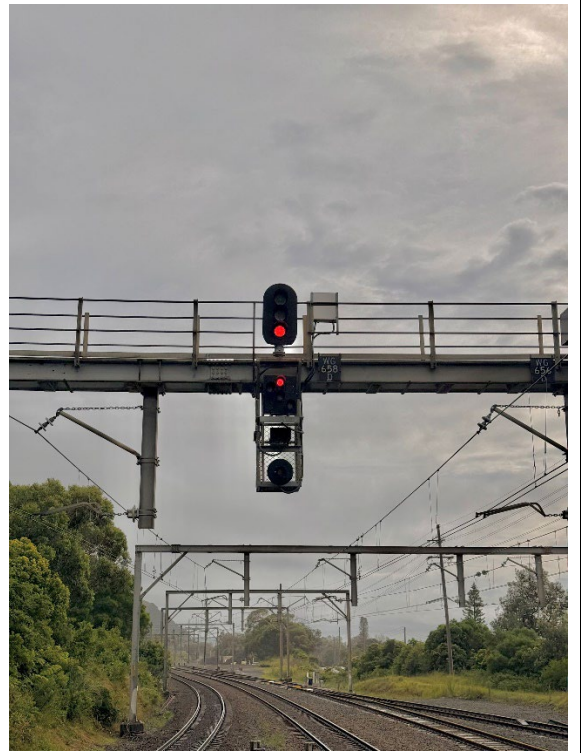


Image 3: Coalcliff Side TOA Limits WG 658 D Signal

Access Gate



Image 4: Access Gate 100 55.954 D off Railway Crescent

Diagram

