

Safe Work Instruction

Lookout Working Worksite Protection for Hurstville Siding and Up Illawarra Local routine network maintenance activities



DOCUMENT NO.	D2022/3711
WORK DESCRIPTION	Routine network maintenance activities
WPP Number	CS9B 10880
SCOPE:	<p>This SWI is applicable for the worksite protection arrangements using lookout working concerning routine network maintenance, defect management and repair of assets within the limits specified below and in the attached plan.</p> <p>Work activities include:</p> <ul style="list-style-type: none"> Routine preventative and corrective work such as inspections and maintenance as appropriate for the type of protection being applied as part of this plan.
AUTHORISATIONS:	<p>Protection Officer: Protection Officer Level 1 or higher</p> <p>Lookout: Engineering Hand signaller Level 1 or higher or Protection Officer Level 1 or higher.</p>
SAFETY CONTROLS: Lookout working arrangements	<p>The nominated worksite location for Lookout Working is a fixed worksite and includes the Stabling Road, Maintenance Siding and Up Illawarra Local between Hurstville station Platform 1 to clear of 991 points and to End of Terminal Lines.</p> <p>The Protection Officer must:</p> <ul style="list-style-type: none"> Establish Lookouts as required to watch for approaching rail traffic from all entry points Designate and instruct which safe places the workers are to use as the work is completed along the work route within the worksite limits.
PRESTART REQUIREMENTS:	<p>Protection Officer assessment checklist must be completed before instructions in this SWI are followed.</p> <p>Tools and equipment required:</p> <ul style="list-style-type: none"> Protection Officer requires a phone to contact the Signaller. Lookouts require a high-visibility arm sleeve and a whistle/horn.
FURTHER INFORMATION:	<p><i>NWT 300 Planning work in the Rail Corridor</i></p> <p><i>NWT 310 Lookout Working</i></p> <p><i>NPR 711 Using Lookouts</i></p> <p><i>NPR 751 Calculating Minimum Warning Time</i></p> <p><i>NPR 712 Protecting work from rail traffic on adjacent lines</i></p> <p><i>NGE 200 Walking in the Danger Zone</i></p> <p><i>NLA 400 central – Sutherland</i></p> <p><i>NLA 404 Hurstville</i></p> <p><i>Lookout Working Prohibited Locations Register</i></p>

Safe Work Instruction**Lookout Working Worksite Protection for Hurstville Siding and Up Illawarra
Local routine network maintenance activities****Protection Officer assessment checklist**

Protection Officer's name:		Yes (Tick if Yes)
This document has not expired 12 months beyond the issue date.		
SWI details and protection arrangements have been reviewed and validated for the assessed worksite location, including: <ul style="list-style-type: none">On-site safety assessment has been completed for relevancy of works being undertakenThe required protection details, environment and tasks are unchanged from the details of this SWI		
The Protection Officer and Qualified Workers deploying qualifications are current and have practiced in the last 6 months. If not practiced, then a Rail Safety Coach must be contacted for guidance.		
Corridor Safety Number	Protection Officer Signature	Date

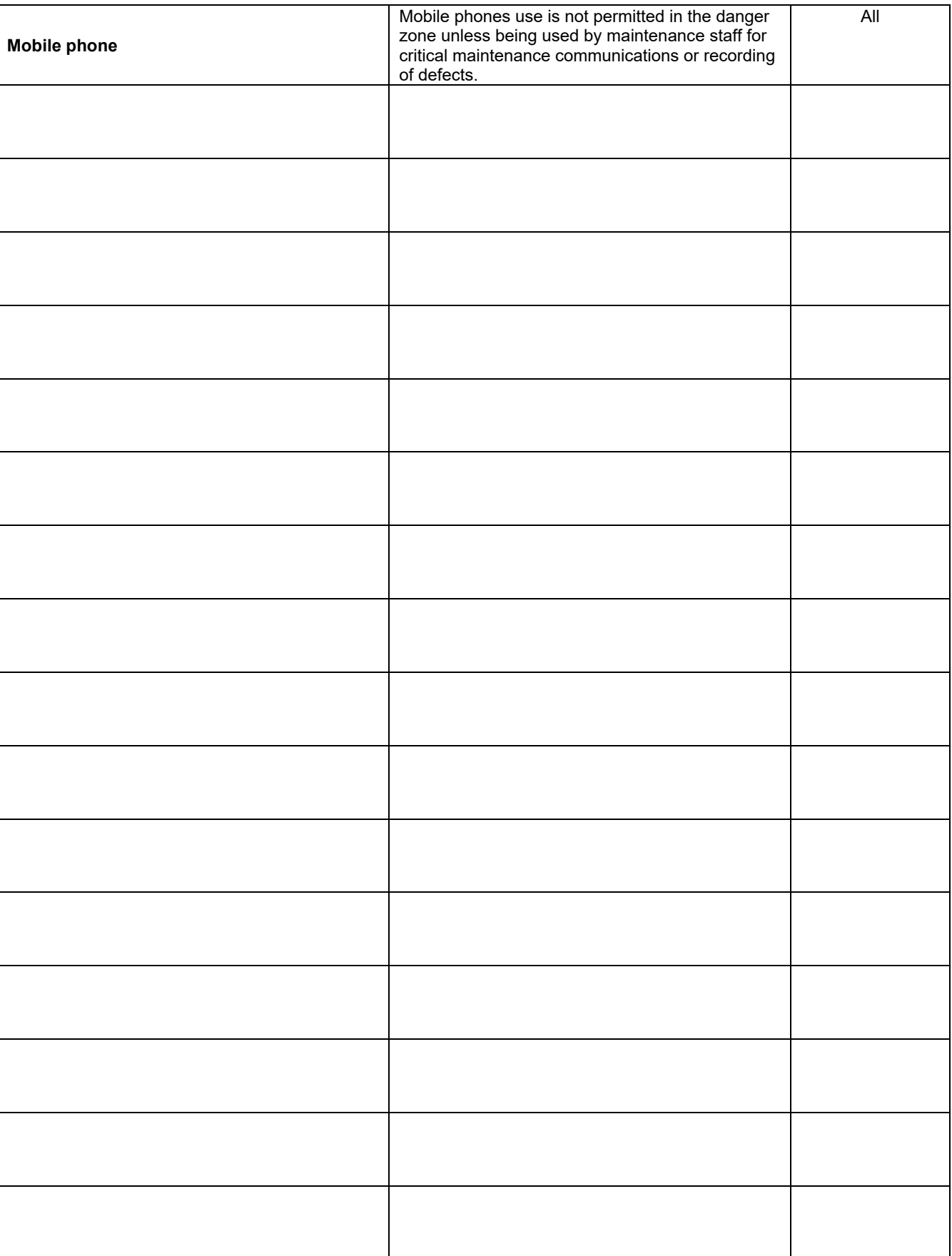
**Warning**

If an above item does not apply, the Protection Officer must not use this Safe Work Instruction. A new worksite protection plan must be completed in accordance with NRF 014 Worksite Protection Pre-work briefing and NRF 015 Worksite Protection Plan.

Safe Work Instruction**Lookout Working Worksite Protection for Hurstville Siding and Up Illawarra
Local routine network maintenance activities****Worksite Protection Pre-work Briefing**Briefing date: / / **Protection Officer details** name signature contact No.Work location: **Up Illawarra Local and Hurstville Sidings (Hurstville)**Scope of work: **Routine network maintenance activities**Worksite protection: **Lookout Working** Refer to Worksite Protection Plan for details

Hazards (e.g. Site specific hazards identified, including physical environment, human errors, plant and equipment)	Controls (to be implemented to eliminate or reduce the risk to the lowest practicable level)	Person responsible for Control
Approaching rail traffic	Lookouts must be trained and competent to perform lookout duties. Lookouts must be rotated if performing lookout for extended periods of time Workers to remain within worksite limits as set out in this procedure. Lookouts must be placed as per protection plan on page 8. Workers are to stop work and move to a safe place immediately on being warned by the lookouts	Protection Officer and Lookout
Live adjacent lines	Lookouts must provide warning to workers when rail traffic is approaching from the adjacent line in either direction.	Protection Officer and Lookout
Two - way running / multiple entry points into worksite	One Lookout placed watching each direction before work starts. Lookouts are to warn workers of approaching rail traffic, including rail traffic entering or travelling within the worksite. Workers are to stop work and move to a safe place.	Protection Officer and Lookout
Obstruction to Minimum Sighting Distance	Lookouts must provide warning to the workers whenever their line of sight is obstructed by passing rail traffic. Workers must stop work and move to a safe place and reassess positioning and method	Protection Officer and Lookout
Adjoining/Surrounding Worksites	Lookouts must have two independent audible warning devices that can be heard by workers over any noise generated by adjoining/surrounding worksites. Lookouts are to provide warning if their line of sight is obstructed by adjoining/surrounding worksites.	Protection Officer and Lookout
Access to / Egress from worksite Slips, trips, falls and hazards carrying equipment	Access and egress points must be agreed prior to entering the danger zone, consideration should be given to ease of access and safest possible entry and exit points. Protection Officer will assess and instruct when it is safe for workers to use <i>NGE 200 Walking in the Danger Zone</i> to move to the worksite or safe place.	All

Lookout Working Worksite Protection for Hurstville Siding and Up Illawarra Local routine network maintenance activities



Safe Work Instruction

Lookout Working Worksite Protection for Hurstville Siding and Up Illawarra Local routine network maintenance activities



Workplace Supervisor details

<input type="text" value="name"/>		<input type="text" value="contact No."/>	
Emergency assembly point:	Access Gate	SWMS/SWI Ref #:	<input type="text"/>
First aid kit location:	Sydney Trains work vehicle	First aider:	<input type="text"/>

Workplace Supervisor acknowledgement

The Workplace Supervisor acknowledges that all identified WHS and rail safety hazards have the appropriate controls in place to manage and/or eliminate the hazards.

Yes ☐

Participant acknowledgement

NOTE: Recipients of the briefing are to question the Briefer if they don't understand any part of this briefing.

All workers listed below acknowledge that they:

- | | |
|---|---|
| 1. have been inducted to the site | 6. have been briefed on the contents of the Worksite Protection Plan |
| 2. are free from alcohol and drugs | 7. have been shown the Worksite Protection Plan diagram |
| 3. are free from the effects of fatigue | 8. understand the kinds and limits of worksite protection in place |
| 4. hold the applicable and current Rail Safety Worker Authorisation, trade licence and/or induction record e.g. Construction Industry Induction | 9. have been briefed about any new hazards and controls identified during the final site inspection (<i>final site inspection must be conducted immediately before commencing work</i>) |
| 5. must wear the appropriate Personal Protective Equipment (PPE) | |

Mark each check box below with a tick ☒ if the item applies or a cross ☒ if the item does not apply.

- | | |
|--|---|
| <input type="checkbox"/> have been informed of the requirements of the electrical permit (if required) | <input type="checkbox"/> have been made aware of any hazardous materials/substances on site |
| <input type="checkbox"/> have been briefed on the SWMS/SWIs/documented safe work practice for the job | <input type="checkbox"/> have been briefed on Safety Data Sheets (SDS) |
| <input type="checkbox"/> have been instructed in the controls recorded in this document and SWMS/SWIs | <input type="checkbox"/> have been briefed on the WHS Management plan |
| | <input type="checkbox"/> have been briefed on the hazards of adjoining worksites/processes. |

Name	Signature	Time of briefing: hh:mm	Amendment briefing: hh:mm and initial

Safe Work Instruction

Lookout Working Worksite Protection for Hurstville Siding and Up Illawarra Local routine network maintenance activities



Worksite Protection Plan – Lookout Working

Signaller Details

<input type="text" value="name"/>	<input type="text" value="Hurstville Panel"/>	<input type="text" value="02 8568 3436"/>
-----------------------------------	---	---

Protection Officer Details

<input type="text" value="name"/>	<input type="text" value="signature"/>	<input type="text" value="contact No."/>
<input type="text" value="RSW or RIW No."/>	<input type="text" value="designation"/>	Planned duration <input type="text"/>

Workplace Supervisor details:

Type of work:

Worksite Location

On the

between

and

Worksite assessment

Has the Lookout Working Prohibited Locations Register been consulted? Yes ☐

Warning method

Minimum Warning Time Calculations

Maximum track speed

Number of Lookouts used Position of Lookouts to

Number of additional Lookouts* used Position of Lookouts to

Note - Lookouts are relocated to positions within these KMs as workers move along the worksite.

<input type="text" value="2 sec"/>	+	<input type="text" value="3 sec"/>	+	<input type="text" value="10 sec"/>		<input type="text" value="15 sec"/>	<input type="text" value="55 km/h"/>	<input type="text" value="229 metres"/>
<input type="text" value="2 sec"/>	+	<input type="text" value="3 sec"/>	+	<input type="text" value="10 sec"/>	= Minimum Warning Time (MWT)	<input type="text" value="15 sec"/>	<input type="text" value="15 km/h"/>	<input type="text" value="63 metres"/>
<input type="text" value="sec"/>	+	<input type="text" value="sec"/>	+	<input type="text" value="10 sec"/>		<input type="text" value="sec"/>	<input type="text" value="km/h"/>	<input type="text" value="metres"/>
See Time (S)		Move Time (M)		Safe Time	(S+M+10 sec = MWT)	Track speed		Minimum Sighting Distance as calculated

Note – Additional MWT calculations can be recorded in the Protection Officer's Diary.

Where are the safe places identified for the Lookouts and the workers?

Lookouts:

Workers:

Ensure the workers have been briefed about these work details Yes ☐

Diagrams, notes, and detailed instructions are over the next pages. These are to be read and followed as part of this worksite protection plan for Lookout Working.

INSTRUCTIONS:

1. Workers enter the rail corridor via **double access gate 100 15.037 on the Upside**
2. The Protection Officer briefs workers regarding the worksite protection arrangements.
3. The Protection Officer contacts **Hurstville Panel** and informs the Signaller about the implementation of Lookout Working.
4. Lookouts are positioned at designated locations.
5. Workers commence work up to designated locations.
6. Workers move to safe place.
7. Lookouts are repositioned at the next designated location.
8. Steps 6-8 are repeated until work is complete.
9. Workers move to a safe place.
10. Lookouts are recalled.
11. Workers exit the worksite through either **100 15.037 or 100 15.603 on the Upside.**
12. The Protection Officer contacts **Hurstville Panel** to end Lookout Working.

ADDITIONAL DETAILS

Obstruction to Minimum Sighting Distance

Stabled rail traffic on any tracks, along with prevailing conditions on the day, may obstruct minimum required sighting distance. Upon identification of this hazard, workers must cease work and move to a safe place. The Protection Officer will then conduct an assessment and, if necessary, reposition lookouts to ensure the minimum sighting distance is met.

SPECIAL INSTRUCTION

The Lookout **MUST** be positioned at the SW15+415km stanchion to monitor trains approaching from Penshurst, ensuring the correct sighting distance is achieved.

LOOKOUTS



Image 1: View towards 986 points.



Image 2: View towards Up Illawarra Local and Maintenance Siding

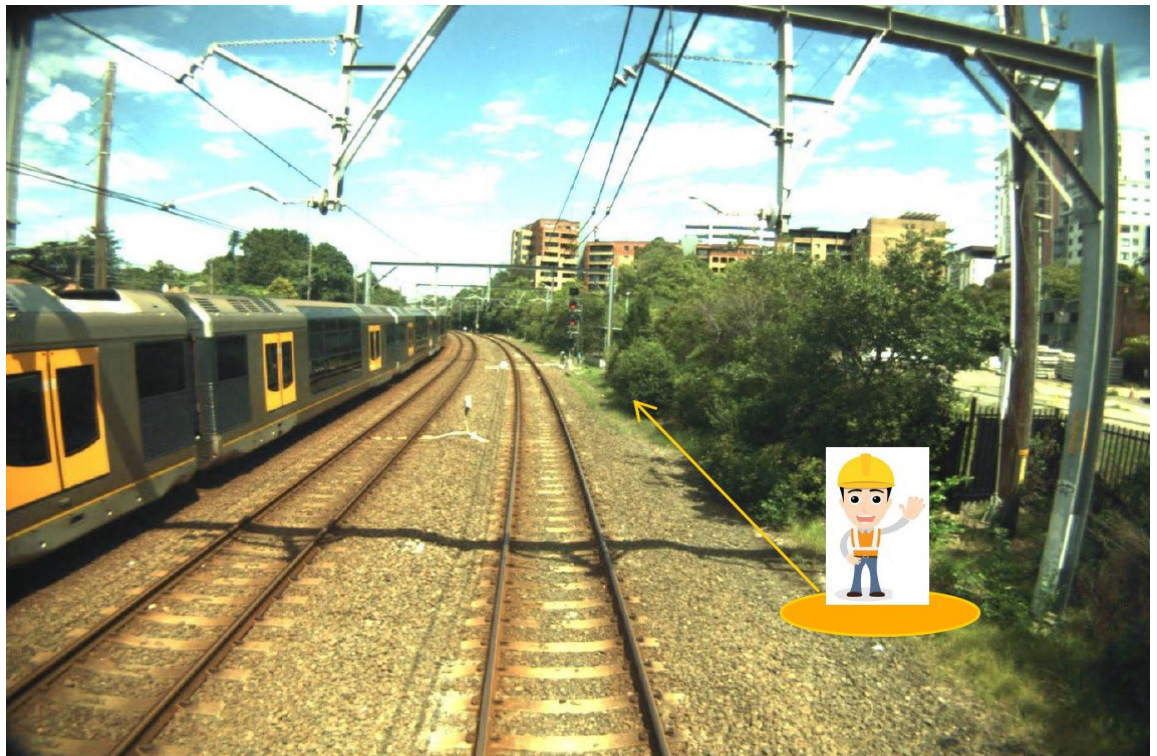


Image 3: Lookout Positioned in designated location at **SW15+415** adjacent to **Up Illawarra Local**, monitoring trains approaching from Penshurst



Image 3: View towards Penshurst **Up Illawarra Local** and **991 Points**



Image 4: View towards **1 & 2 Platforms Penshurst**

ACCESS /
EGRESS



Image 5: Access gate (100 15.037 U) opposite Hurstville Substation

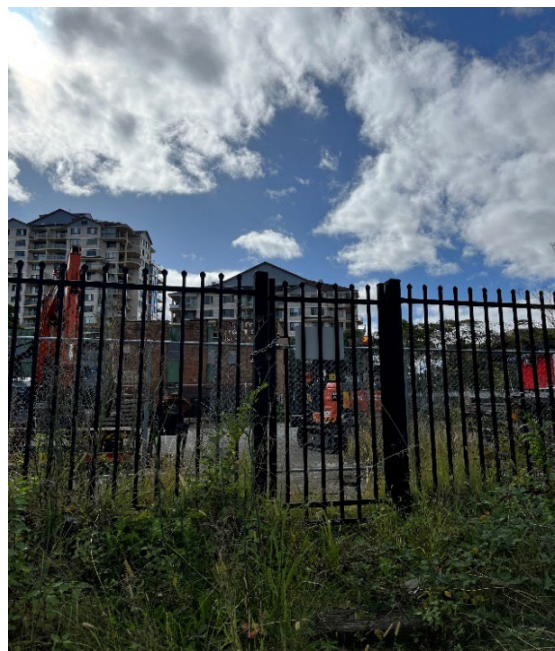
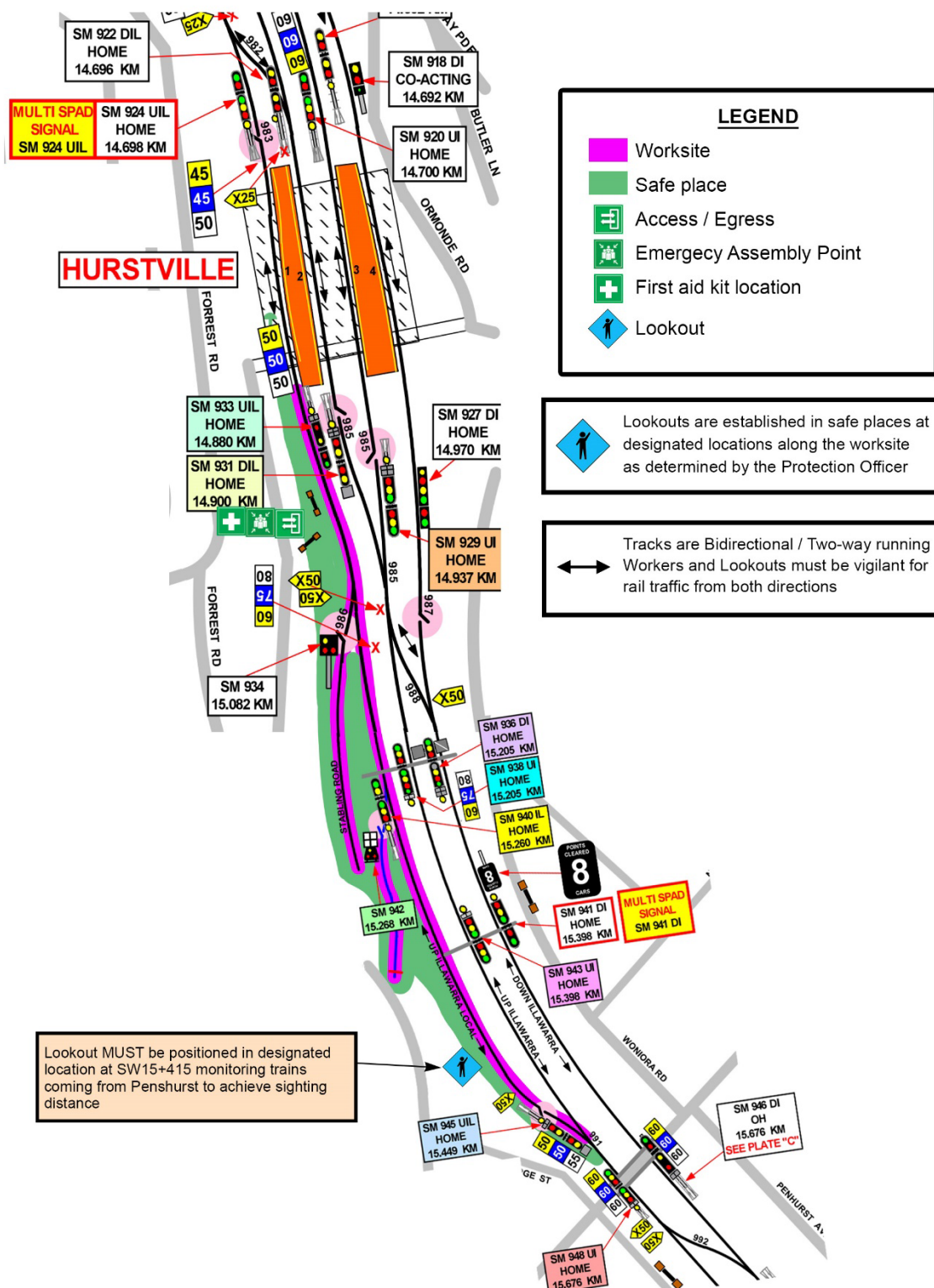


Image 6: Access gate (100 15.603 U) off Forrest Rd next to LS Audio

Lookout Working Worksite Protection for Hurstville Siding and Up Illawarra

Local routine network maintenance activities



[illegible]