

Worksite Protection Planning Diagrams

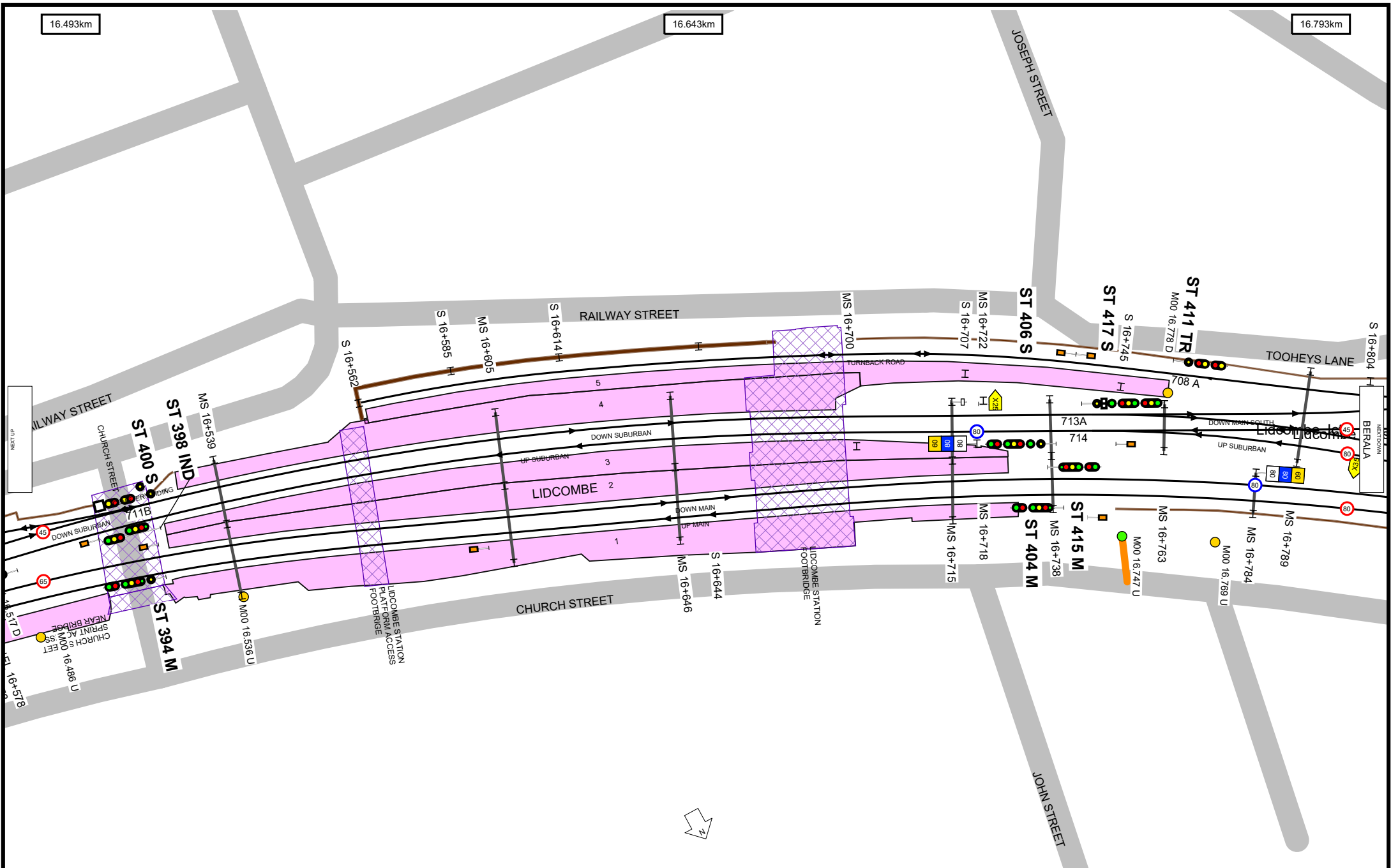
Inner West Line - Lidcombe to Cabramatta via Regents Park - S00

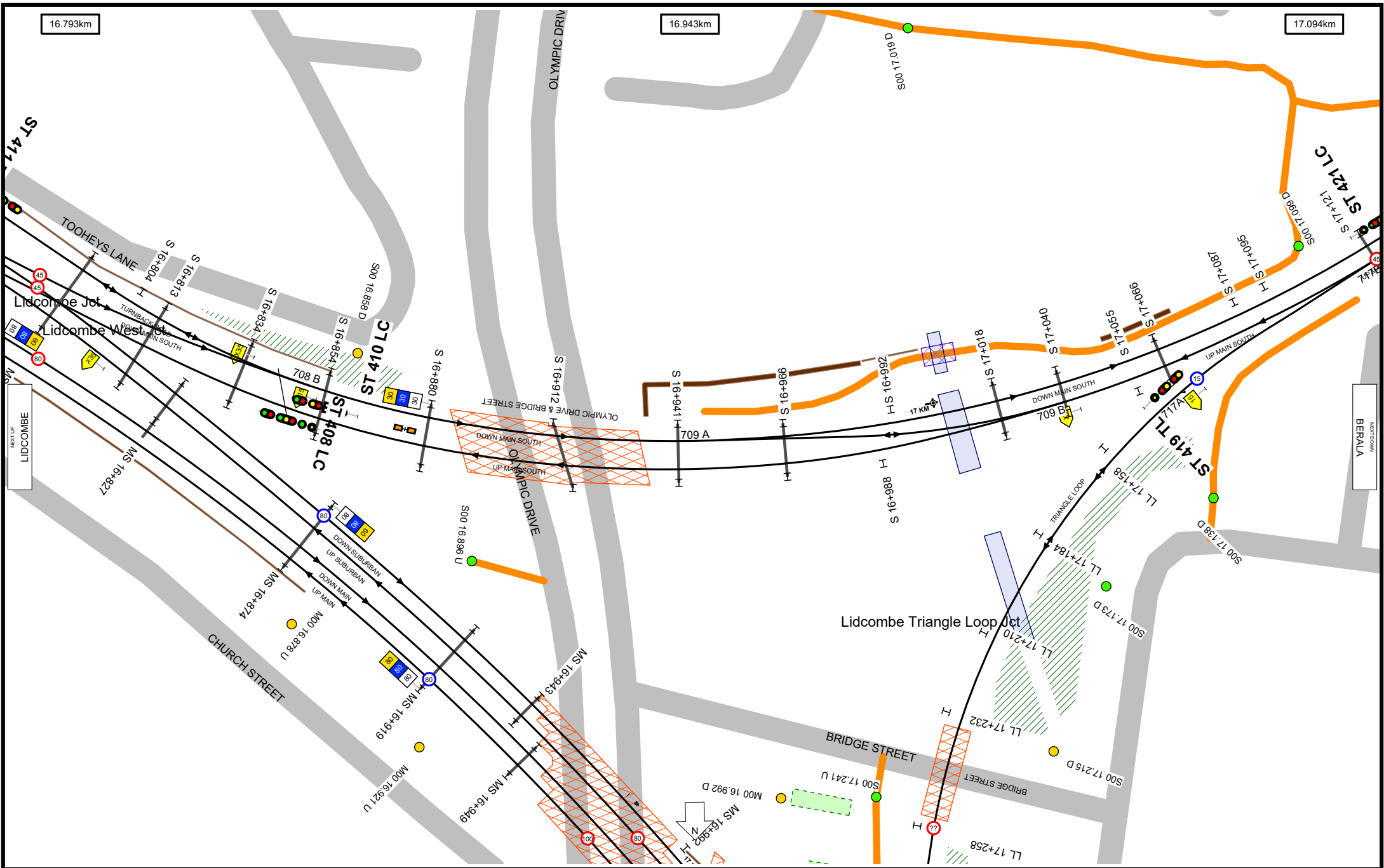
Stations Covered

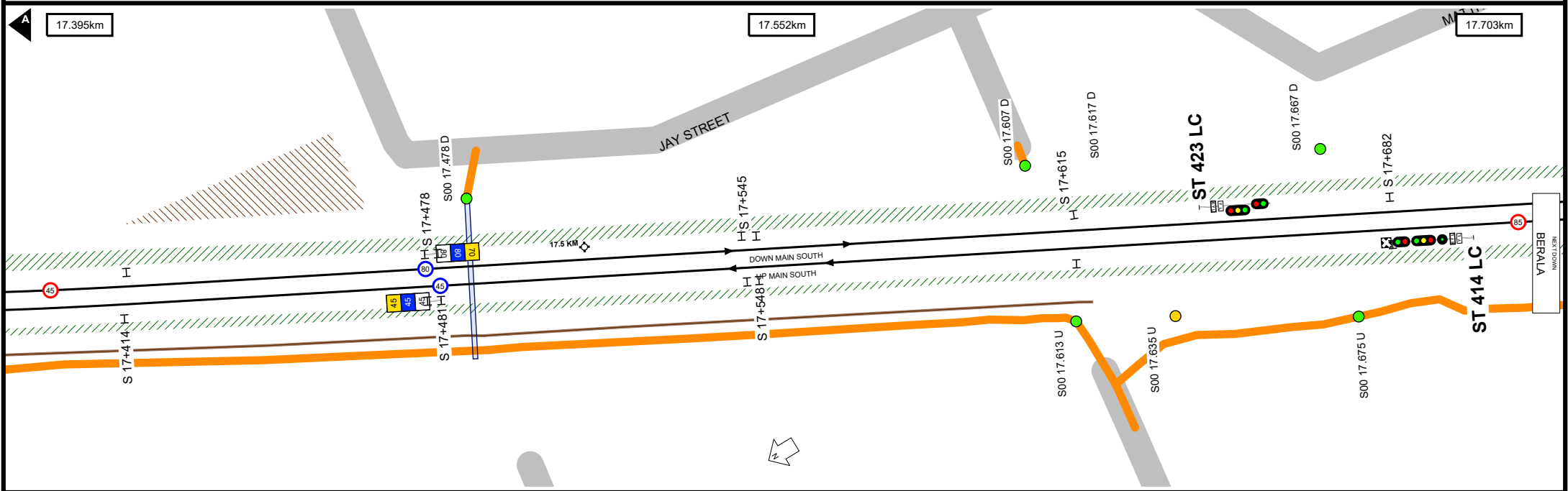
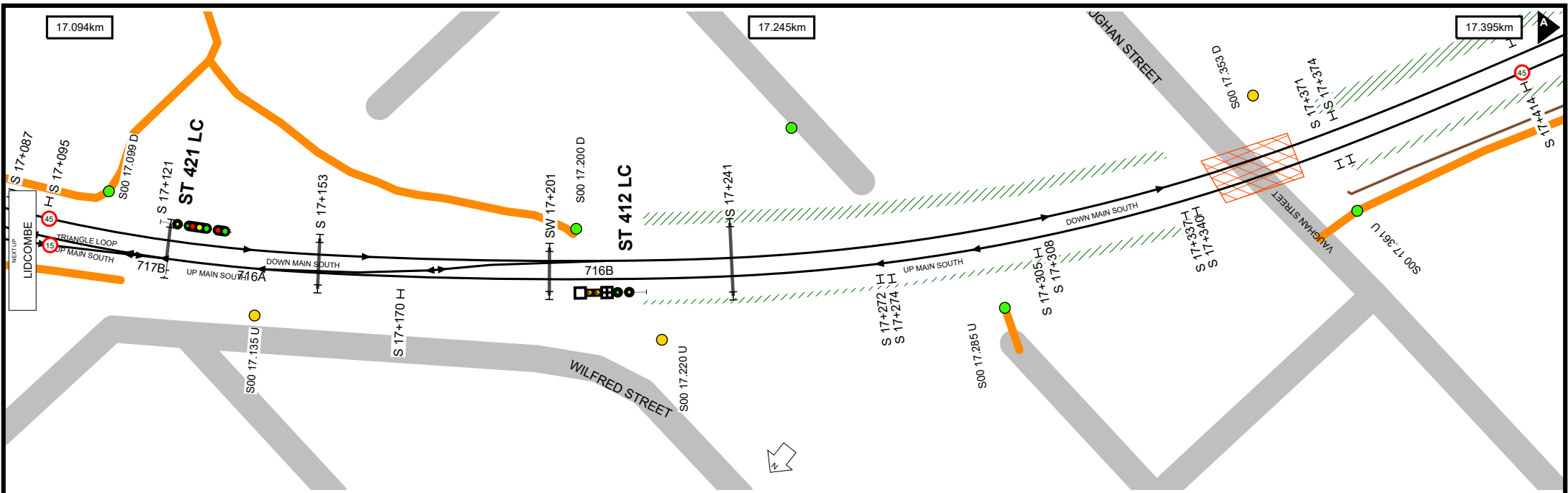
LIDCOMBE	2
BERALA	6
REGENTS PARK	8
SEFTON	11
CHESTER HILL	13
LEIGHTONFIELD	16
VILLAWOOD	17
CARRAMAR	20
CANLEY VALE	23
CABRAMATTA	25

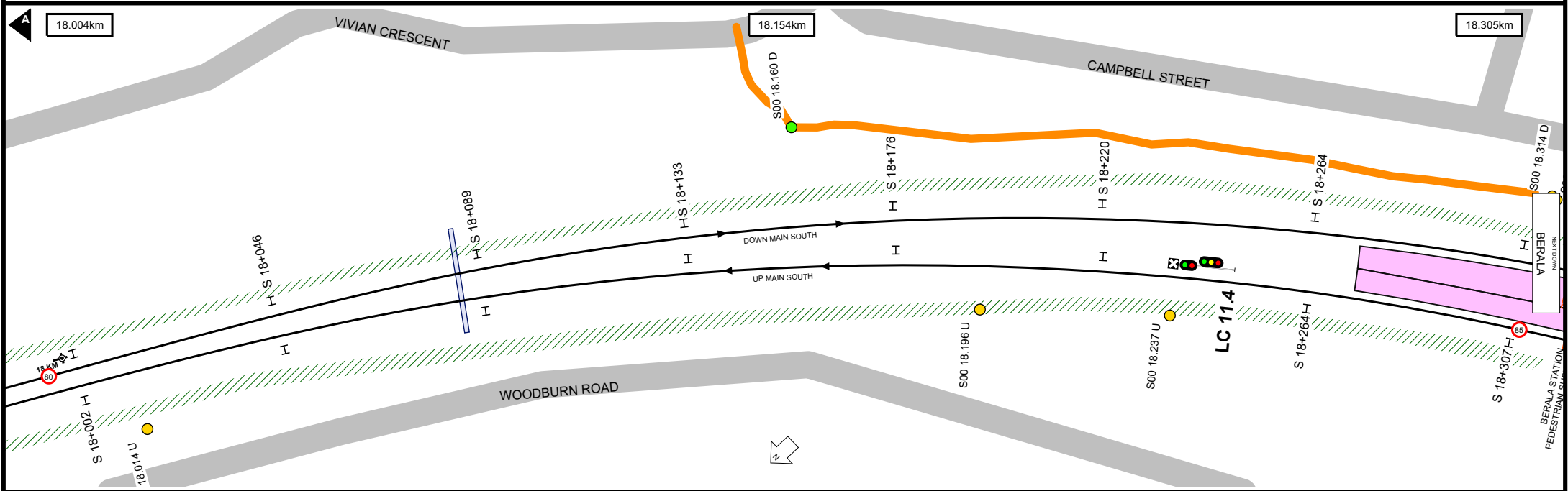
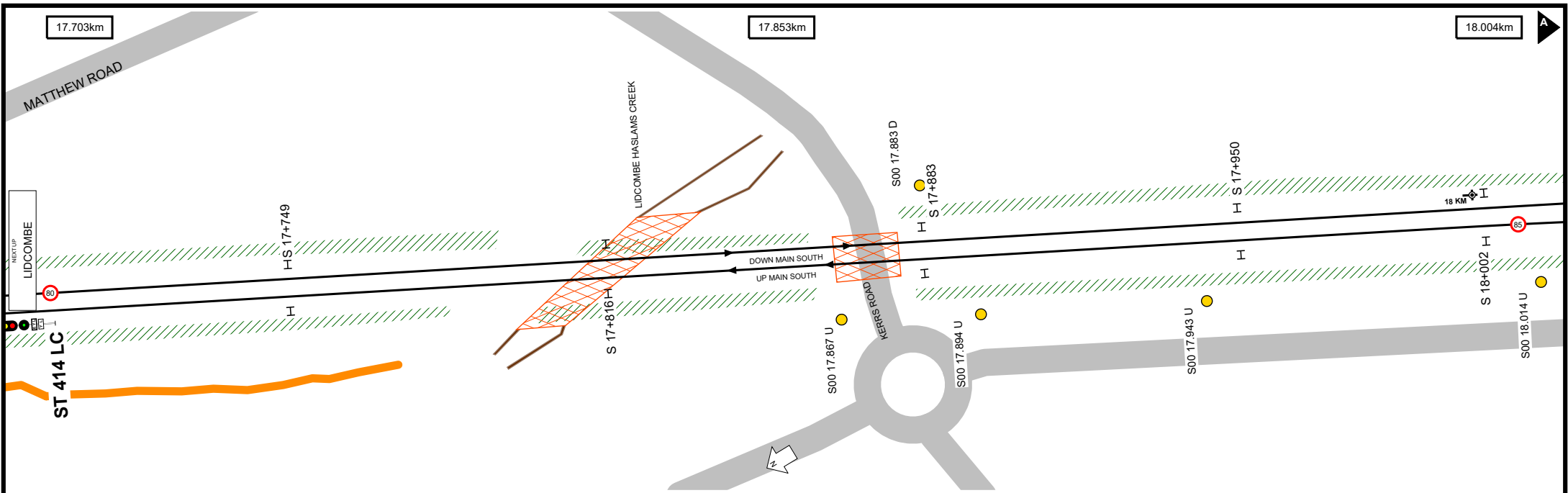
Kilometrage References

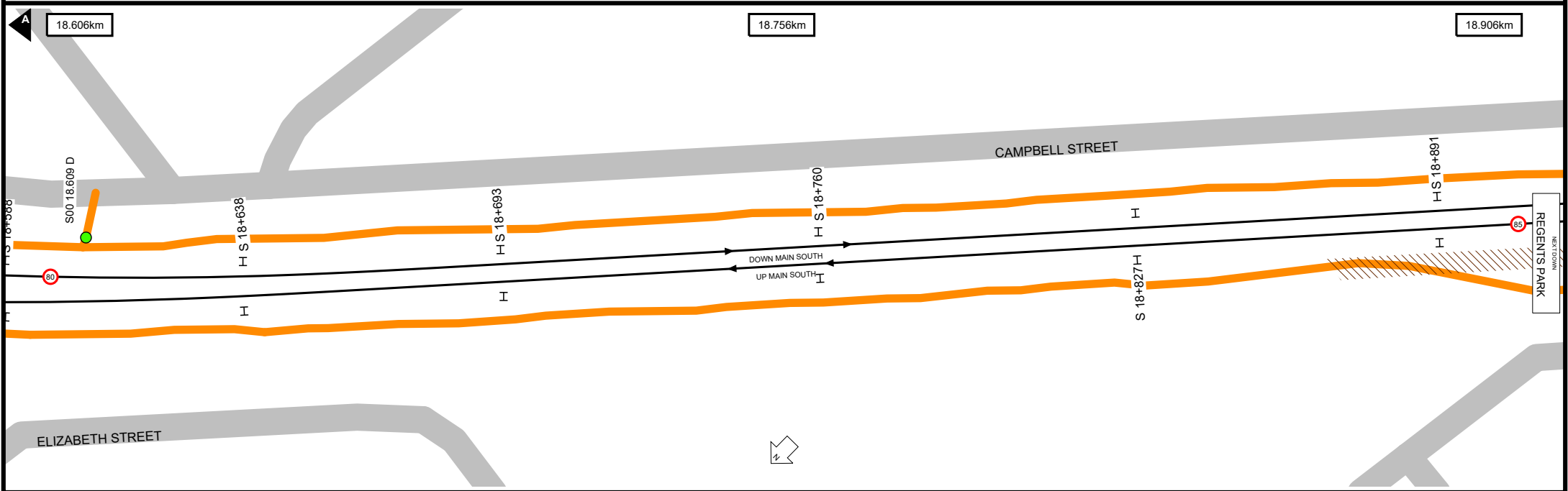
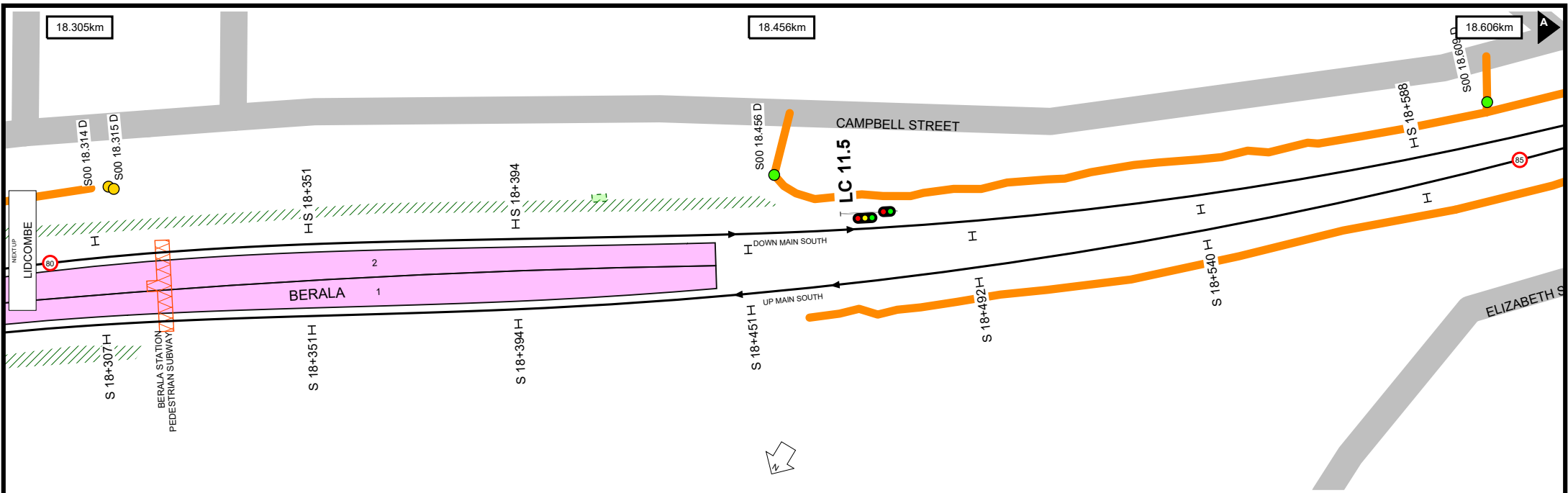
16.493km	2
20.000km	8
25.000km	18
30.000km	25
32.232km	26

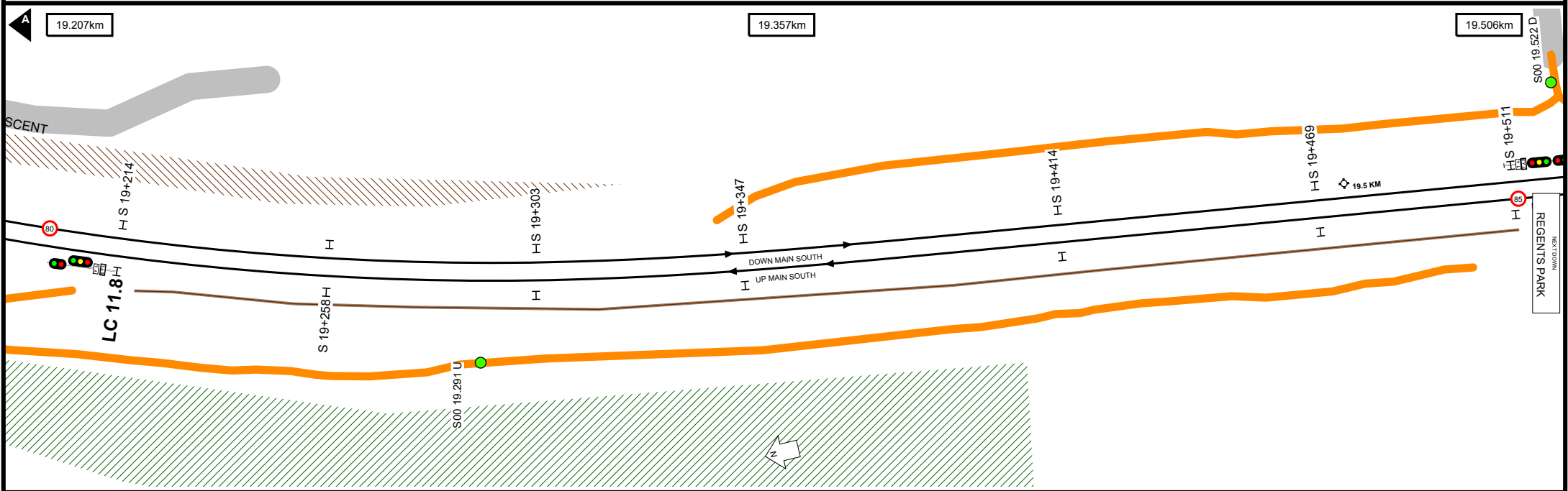
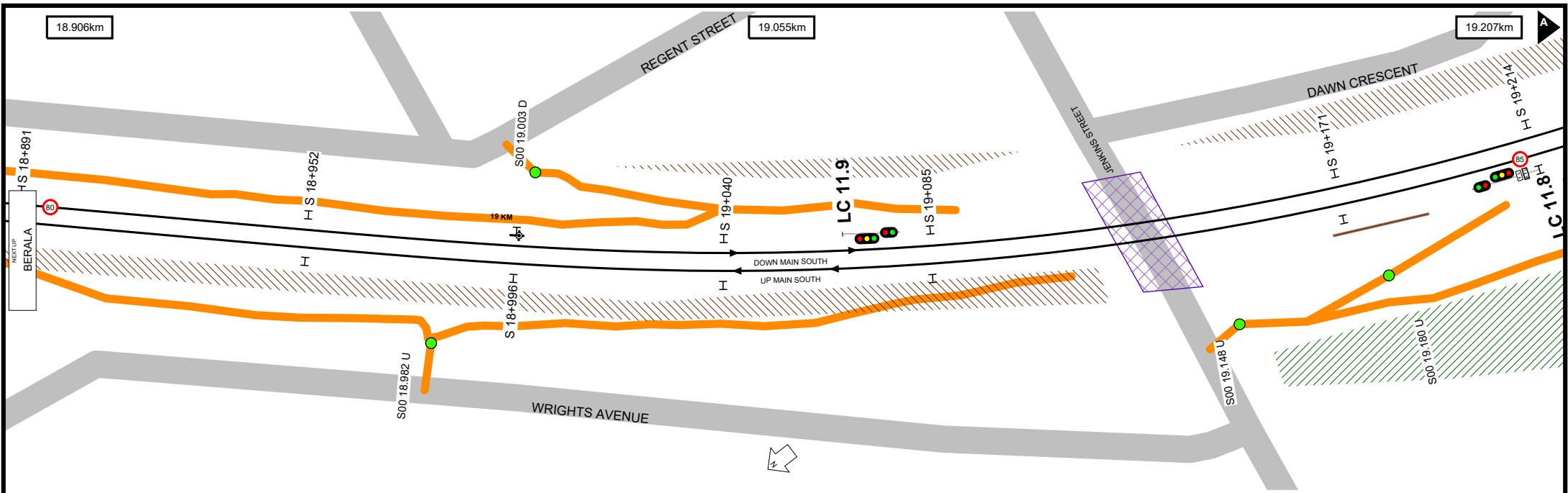


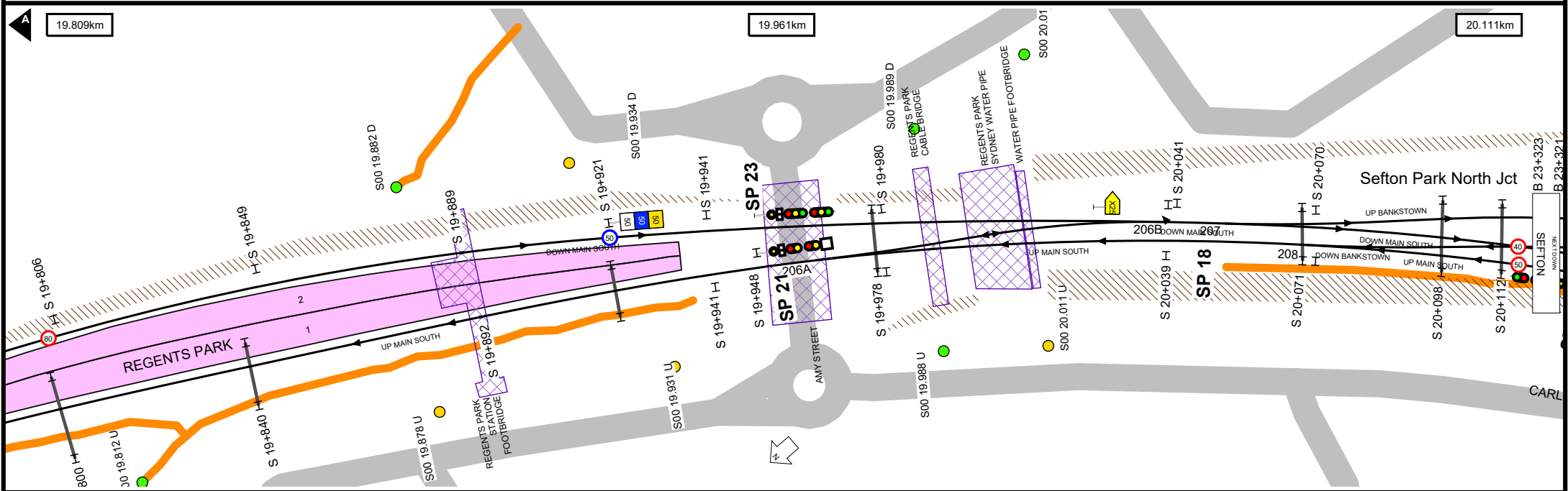
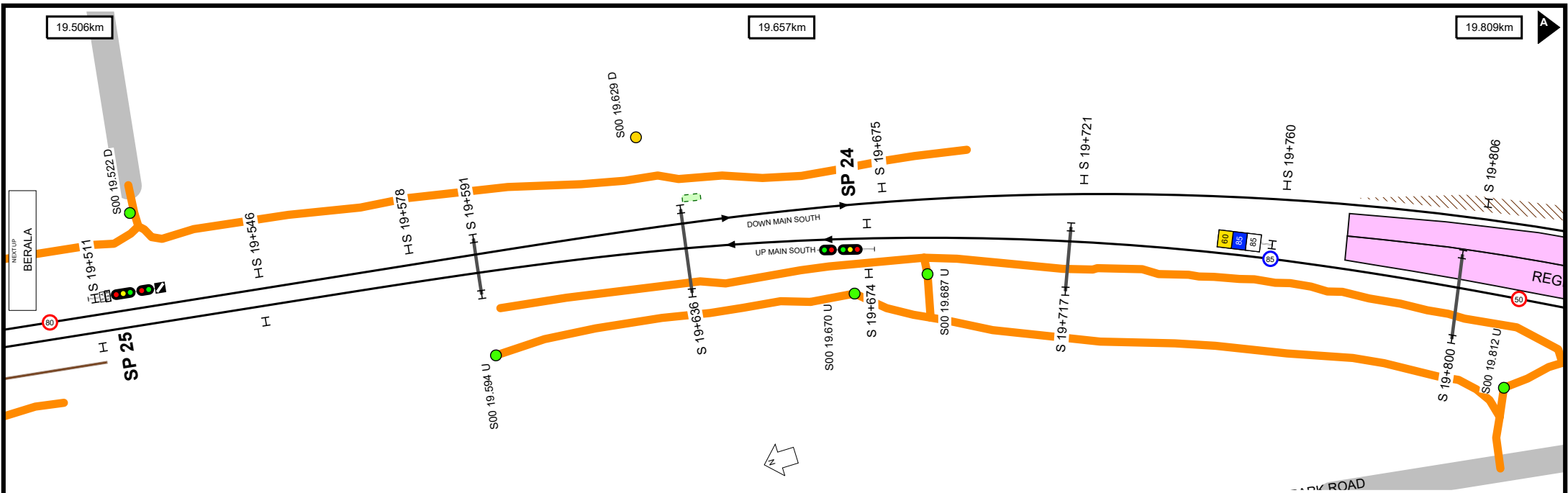












Worksite Protection Planning Diagram
 Contact: rcsp@transport.nsw.gov.au

Transport for NSW

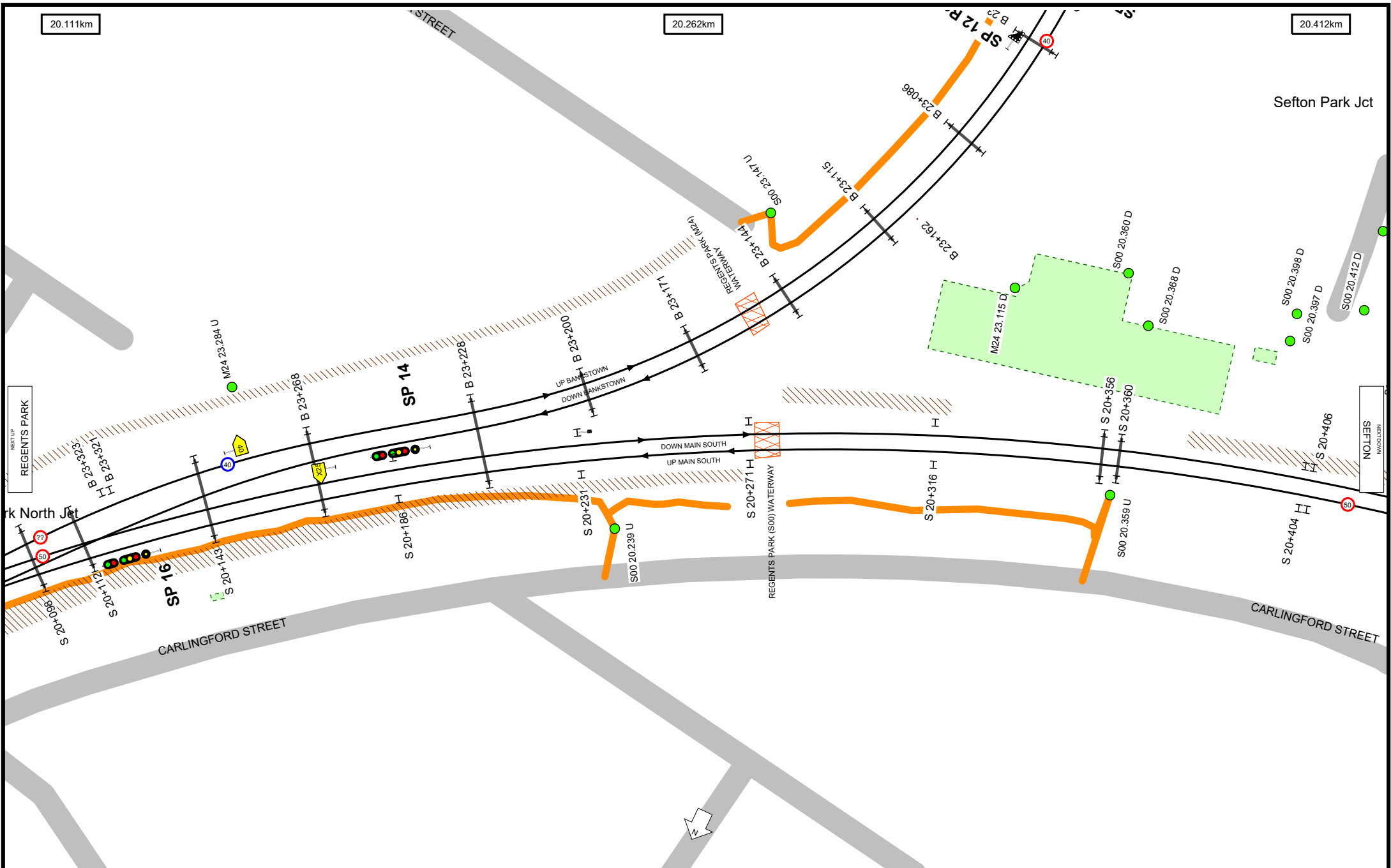
UNCONTROLLED WHEN PRINTED

Data shown here may not have been field verified.
 Do not use for operational purposes without checking against a controlled document.
 For data issues contact GIS.Support@transport.nsw.gov.au

TITLE: **Inner West Line - Lidcombe to Cabramatta - S00**
 Page range 19.506-20.111km

SCALE:

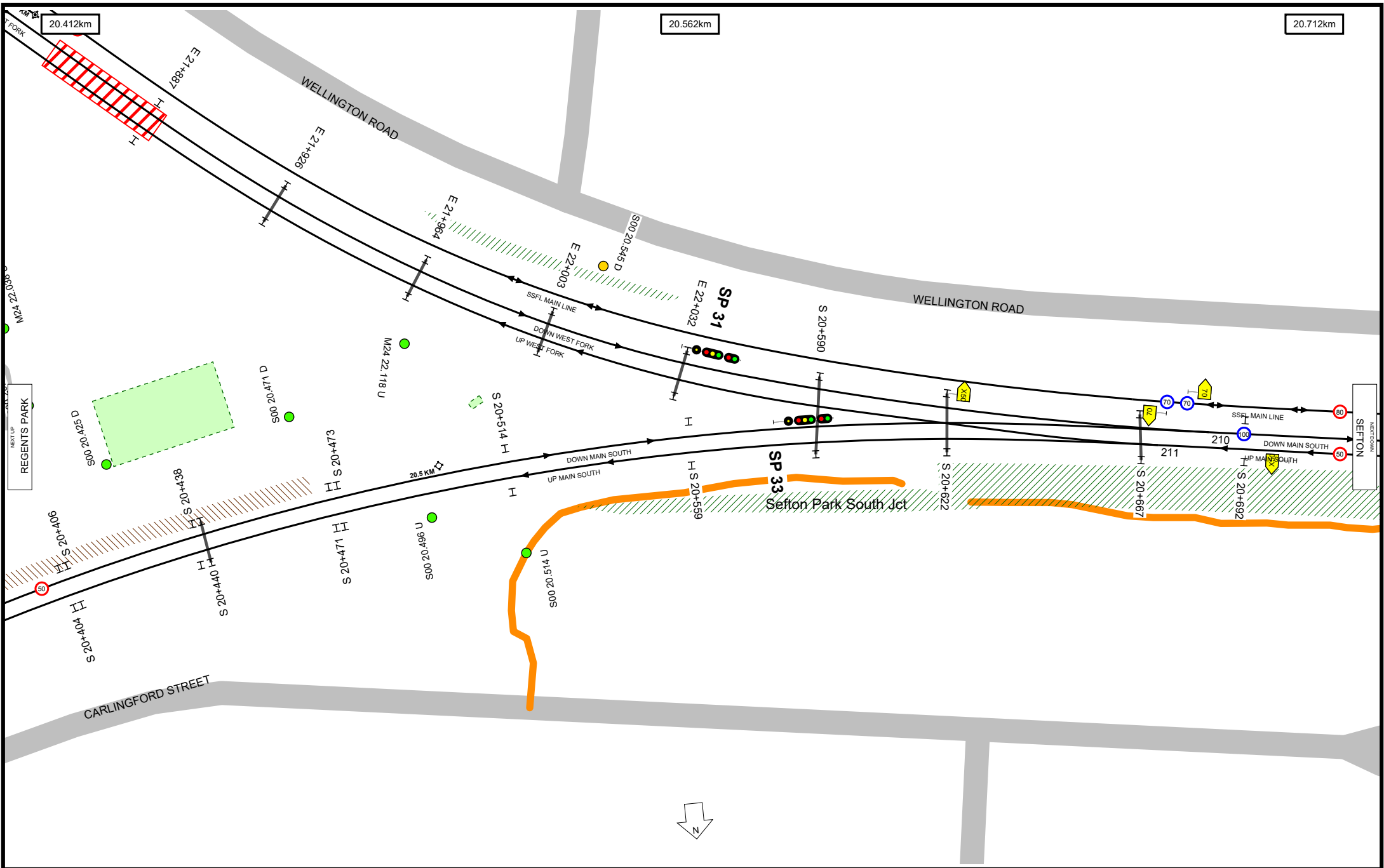
A4
 19/12/2023
 8



UNCONTROLLED WHEN PRINTED

Data shown here may not have been field verified.
 Do not use for operational purposes without checking against a controlled document.
 For data issues contact GIS.Support@transport.nsw.gov.au

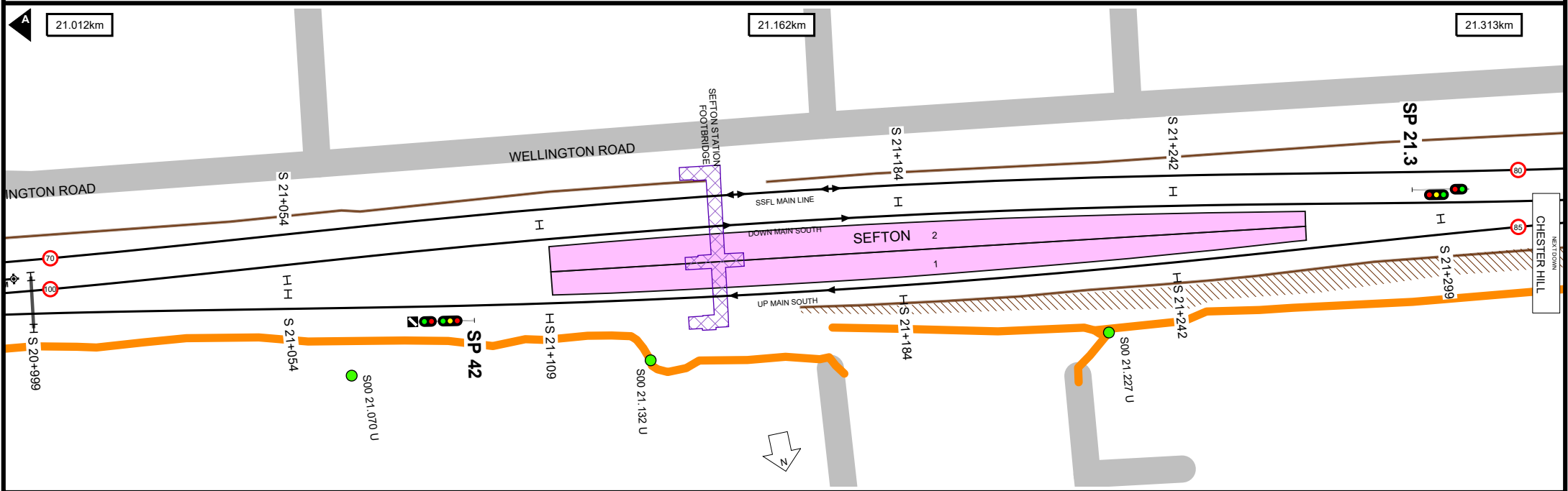
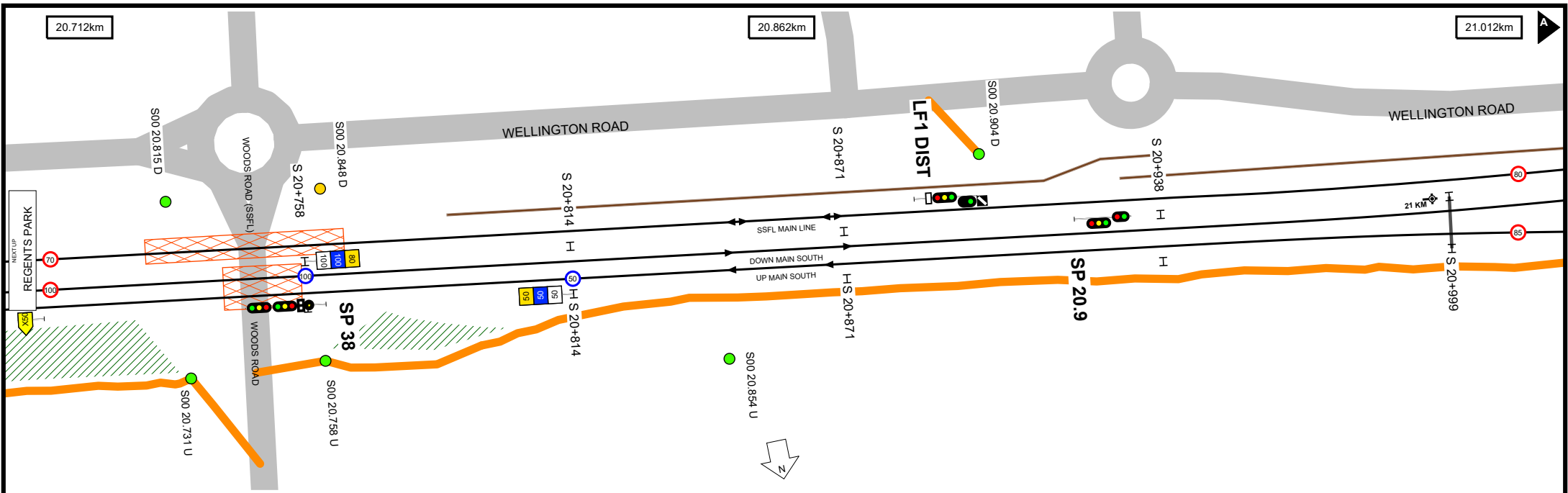


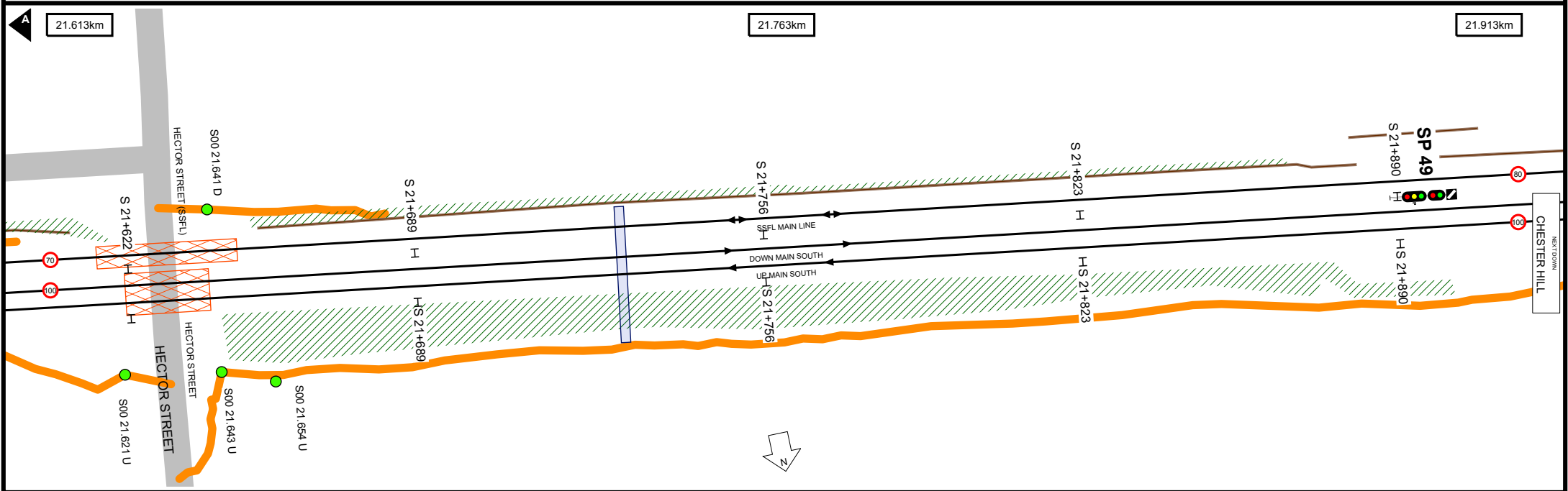
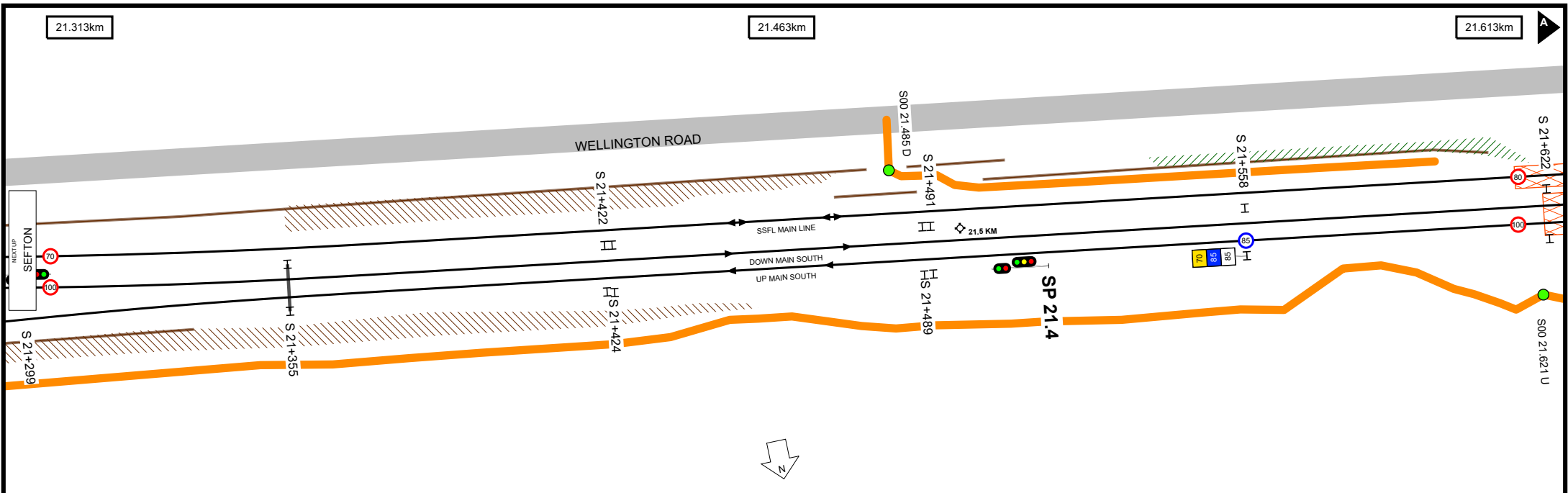


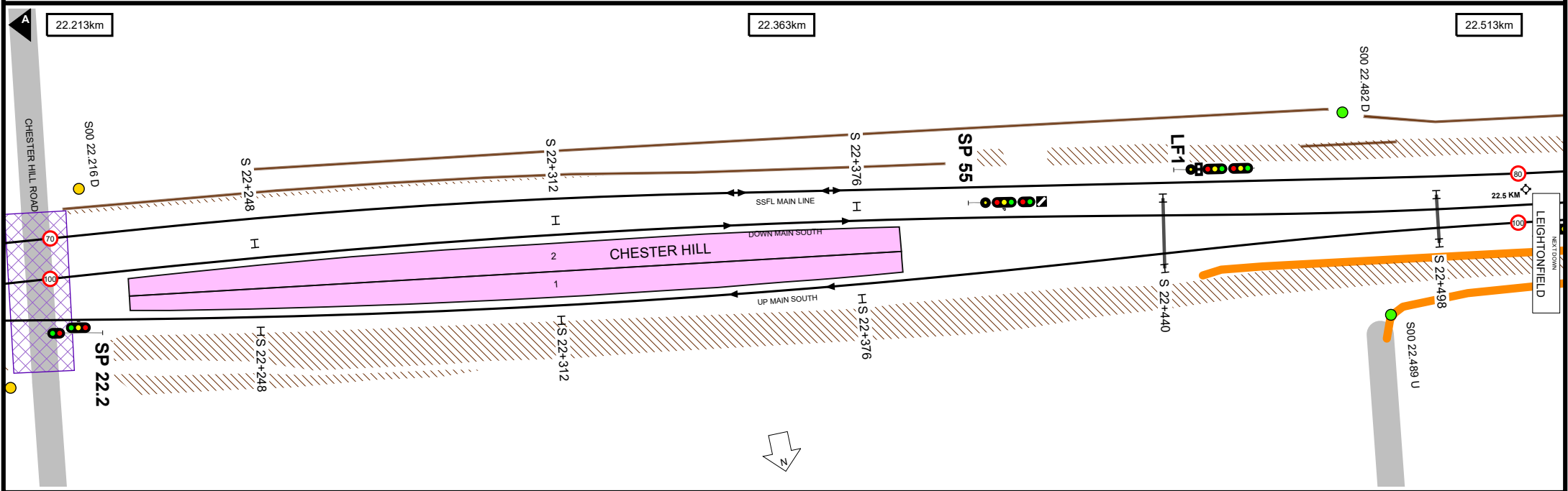
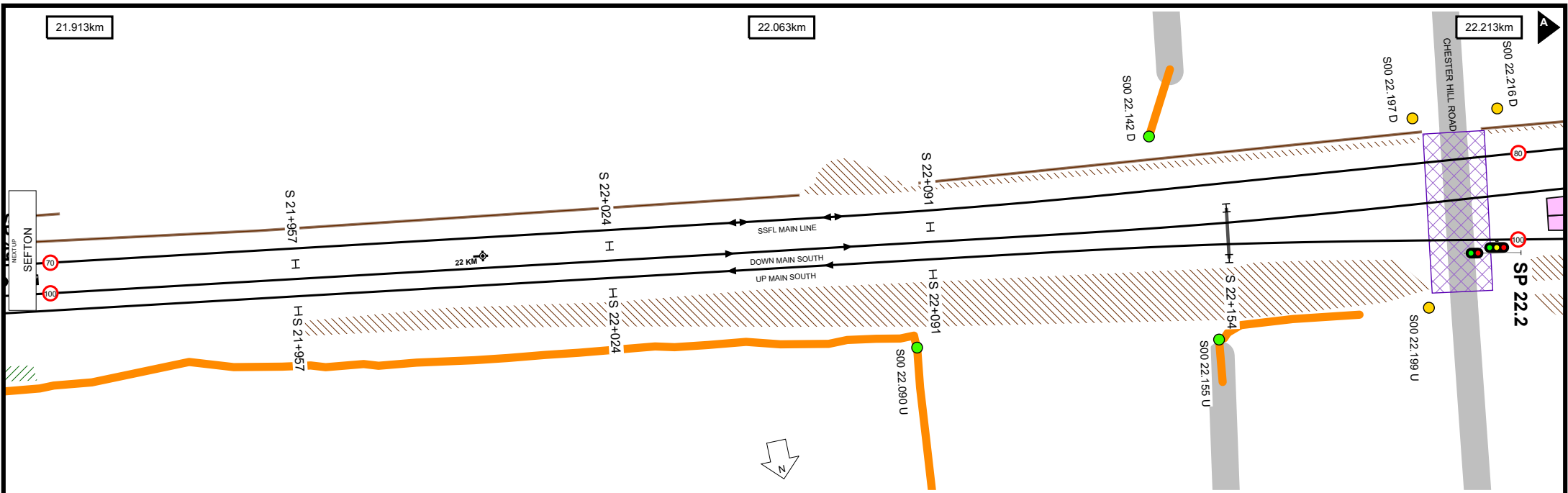
UNCONTROLLED WHEN PRINTED

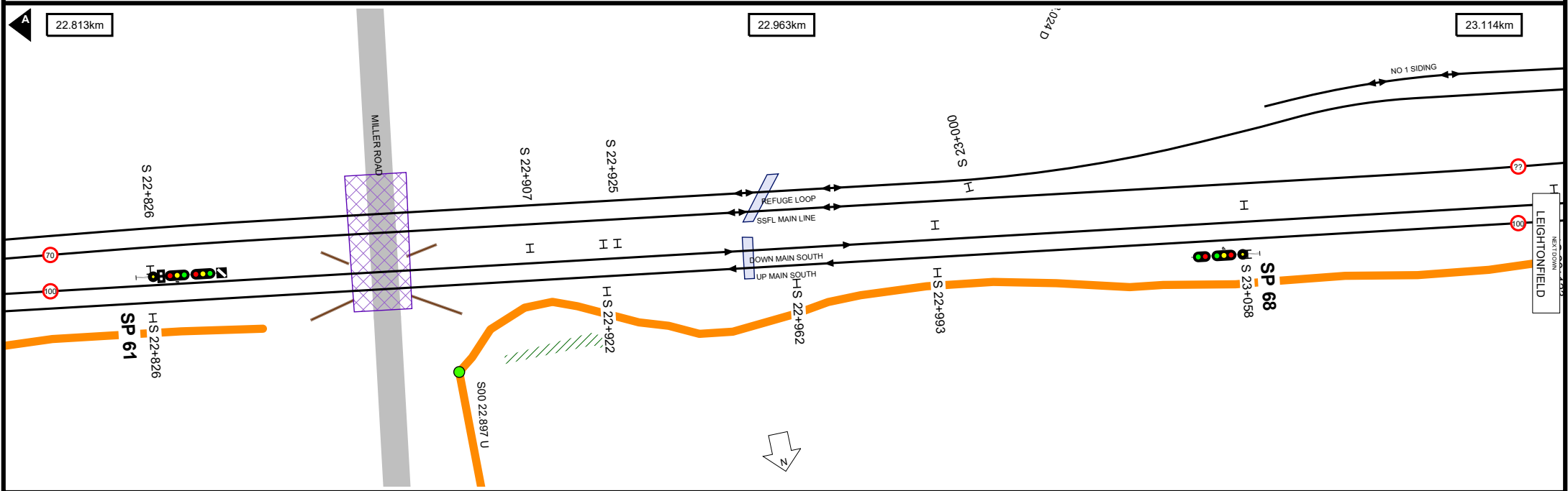
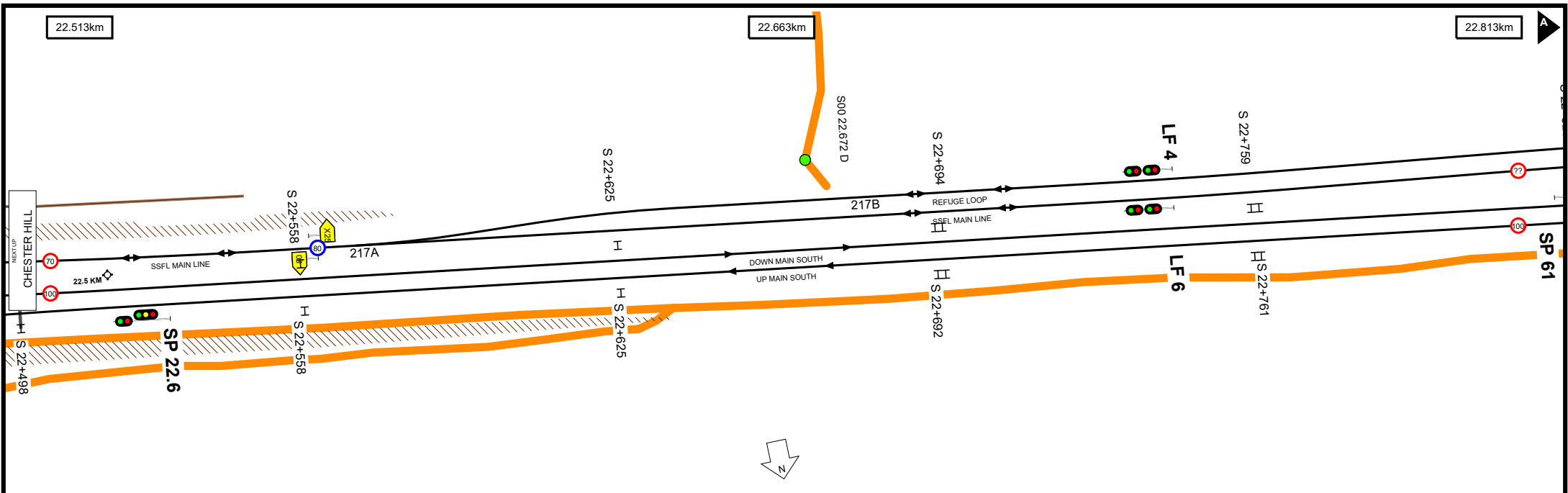
Data shown here may not have been field verified.
 Do not use for operational purposes without checking against a controlled document.
 For data issues contact GIS.Support@transport.nsw.gov.au







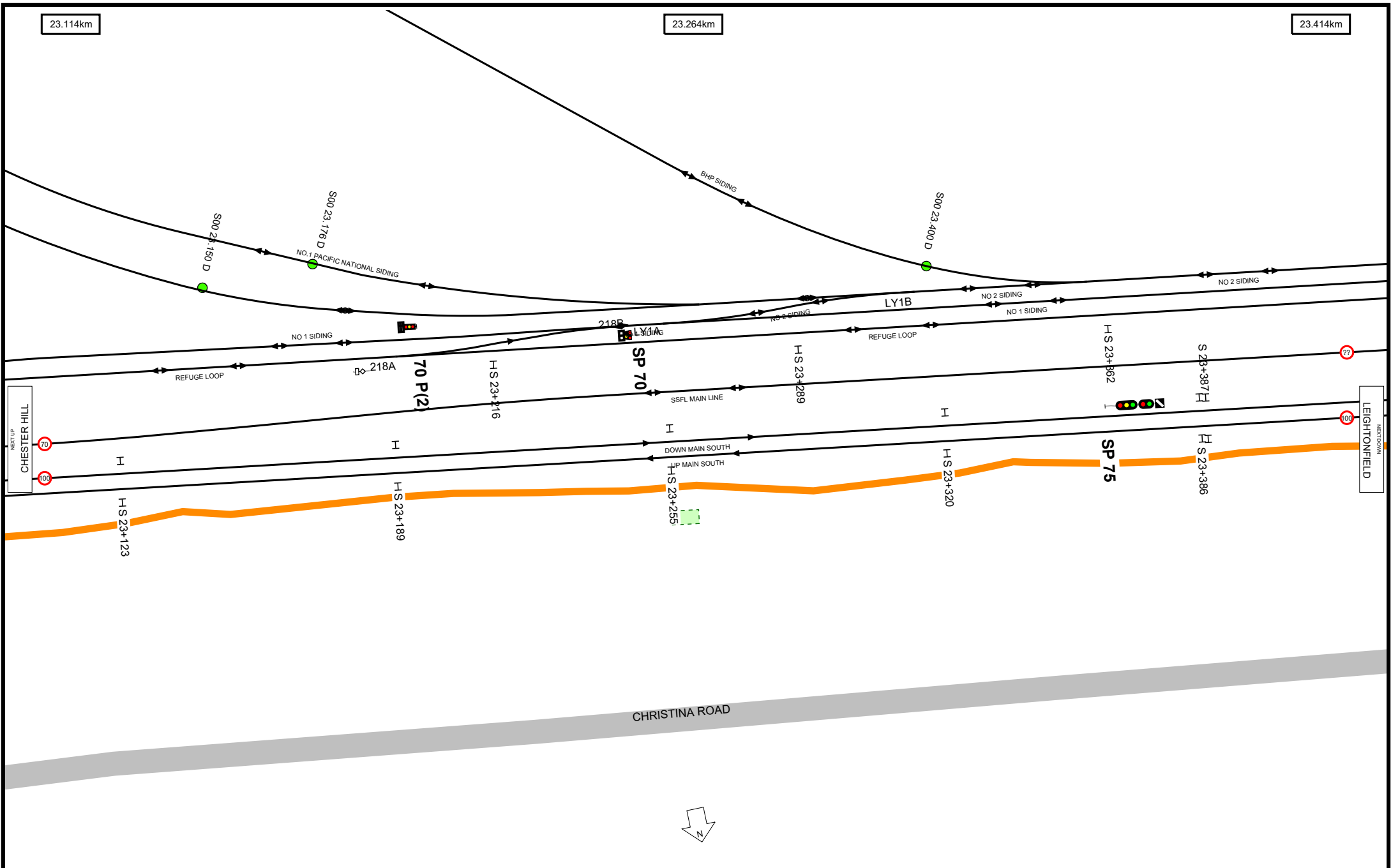




23.114km

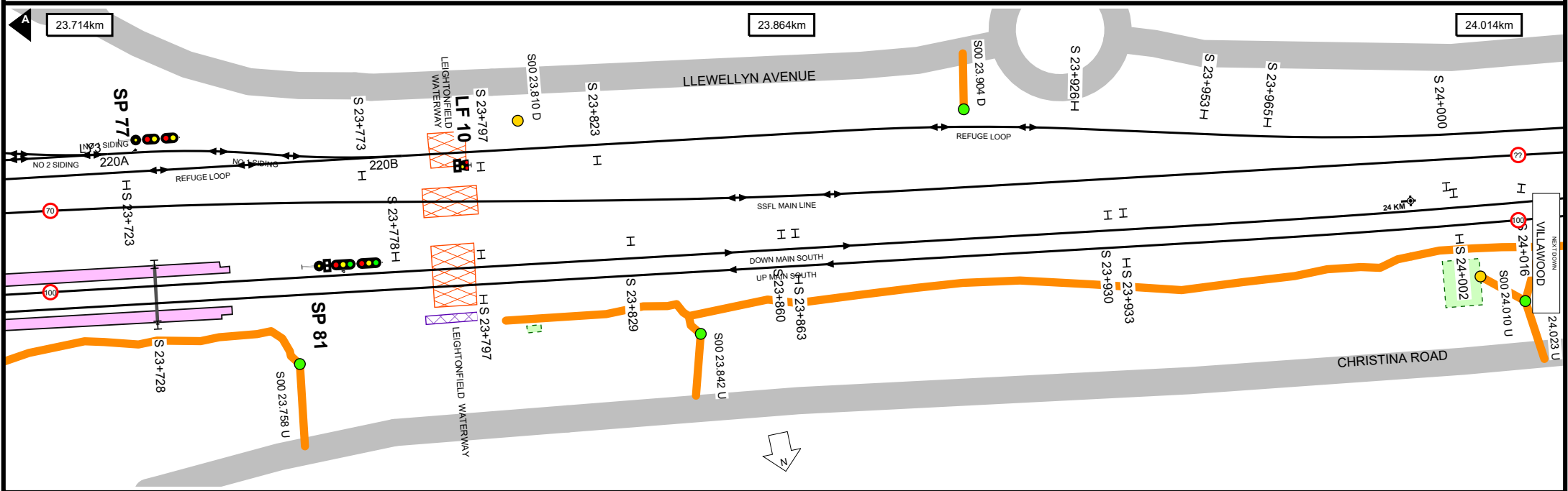
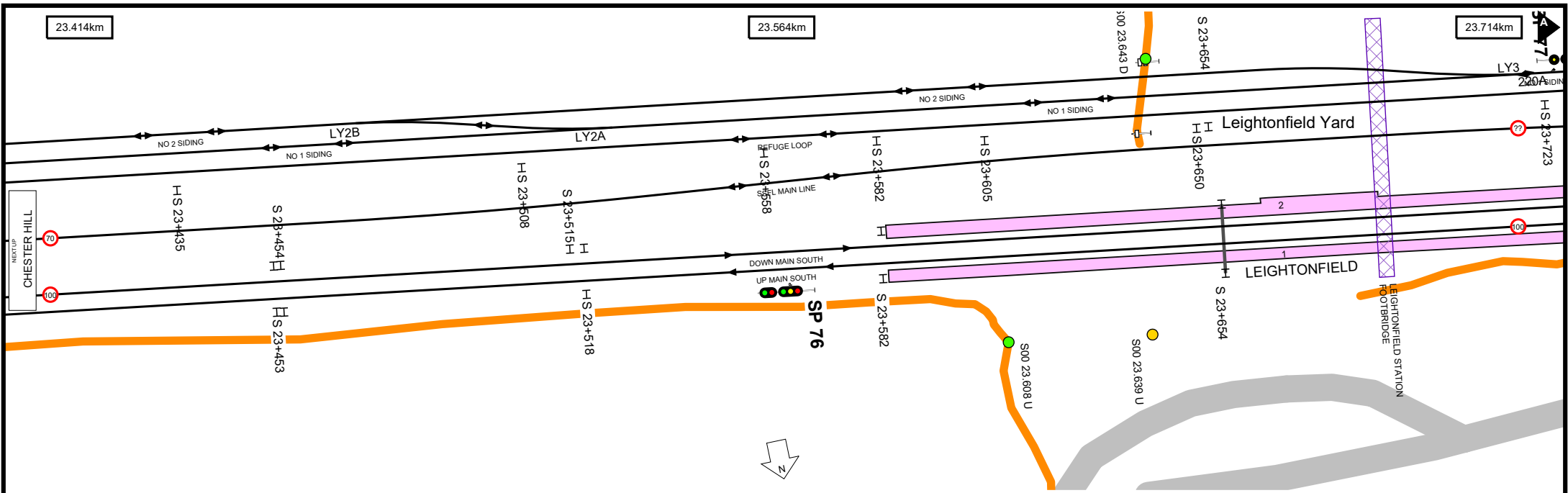
23.264km

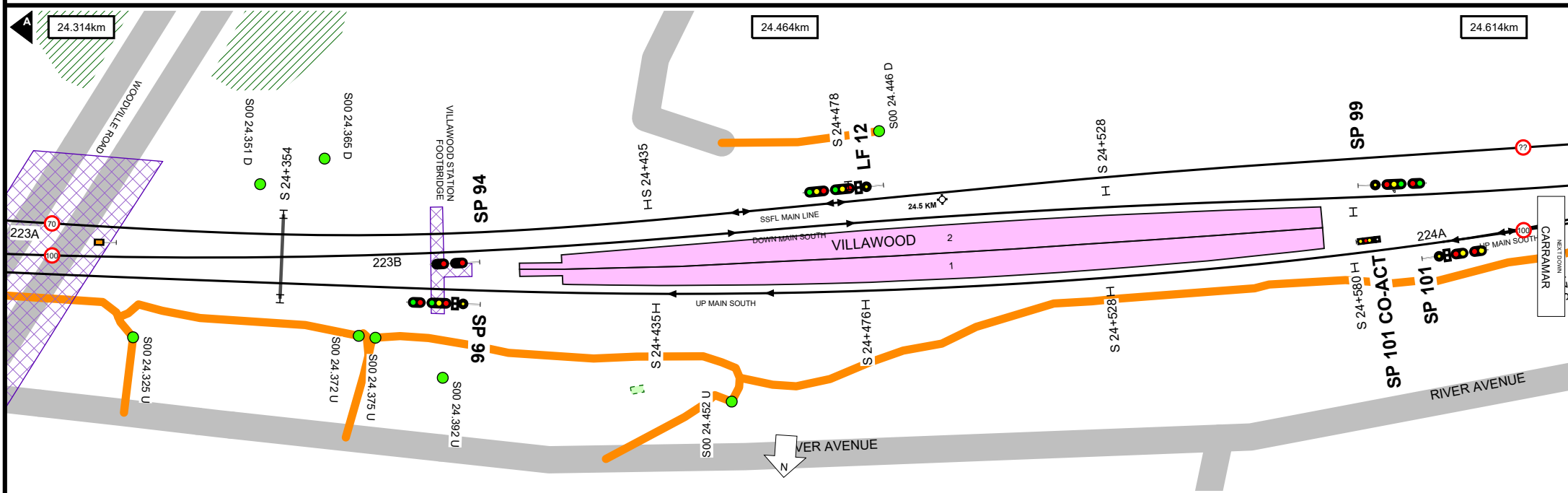
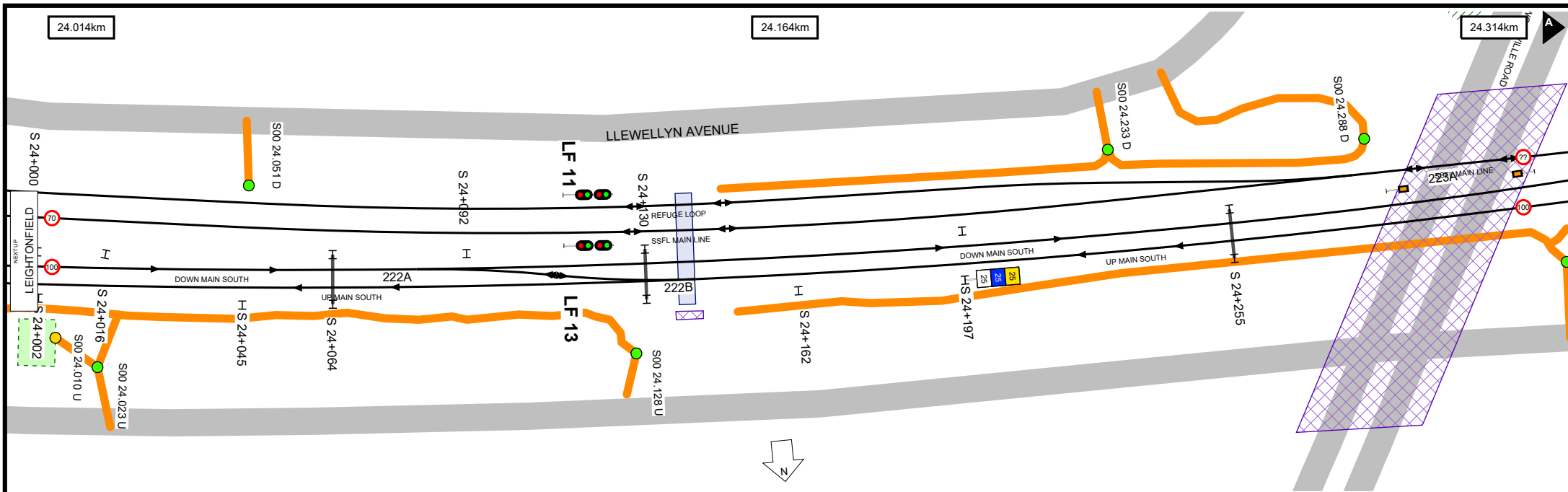
23.414km

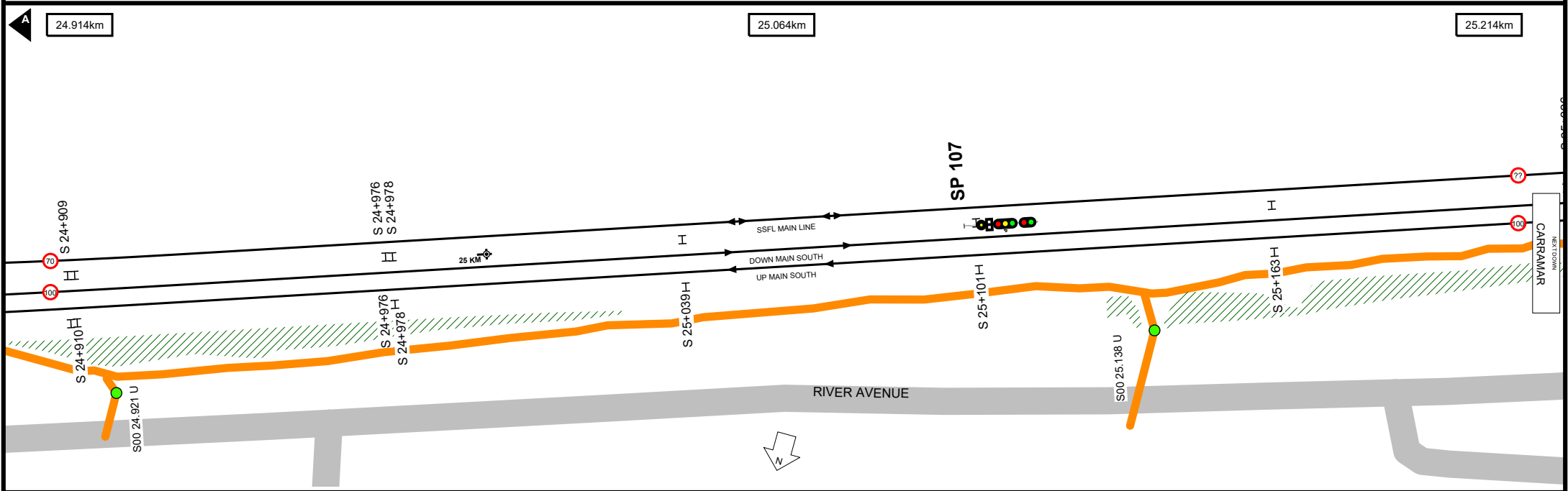
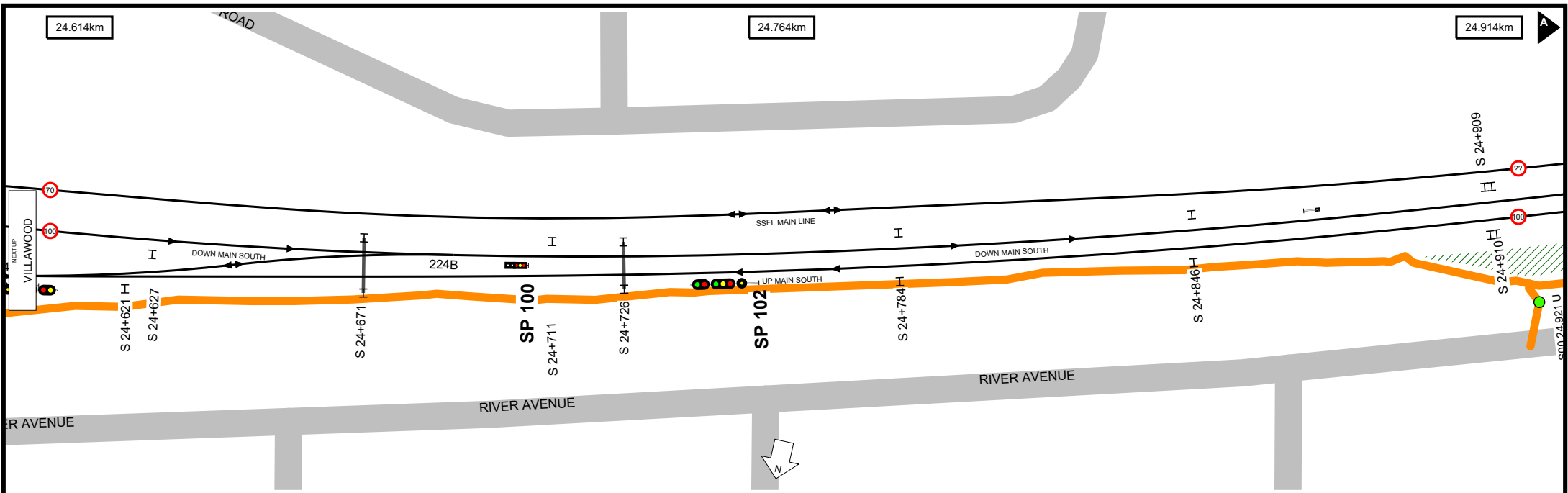


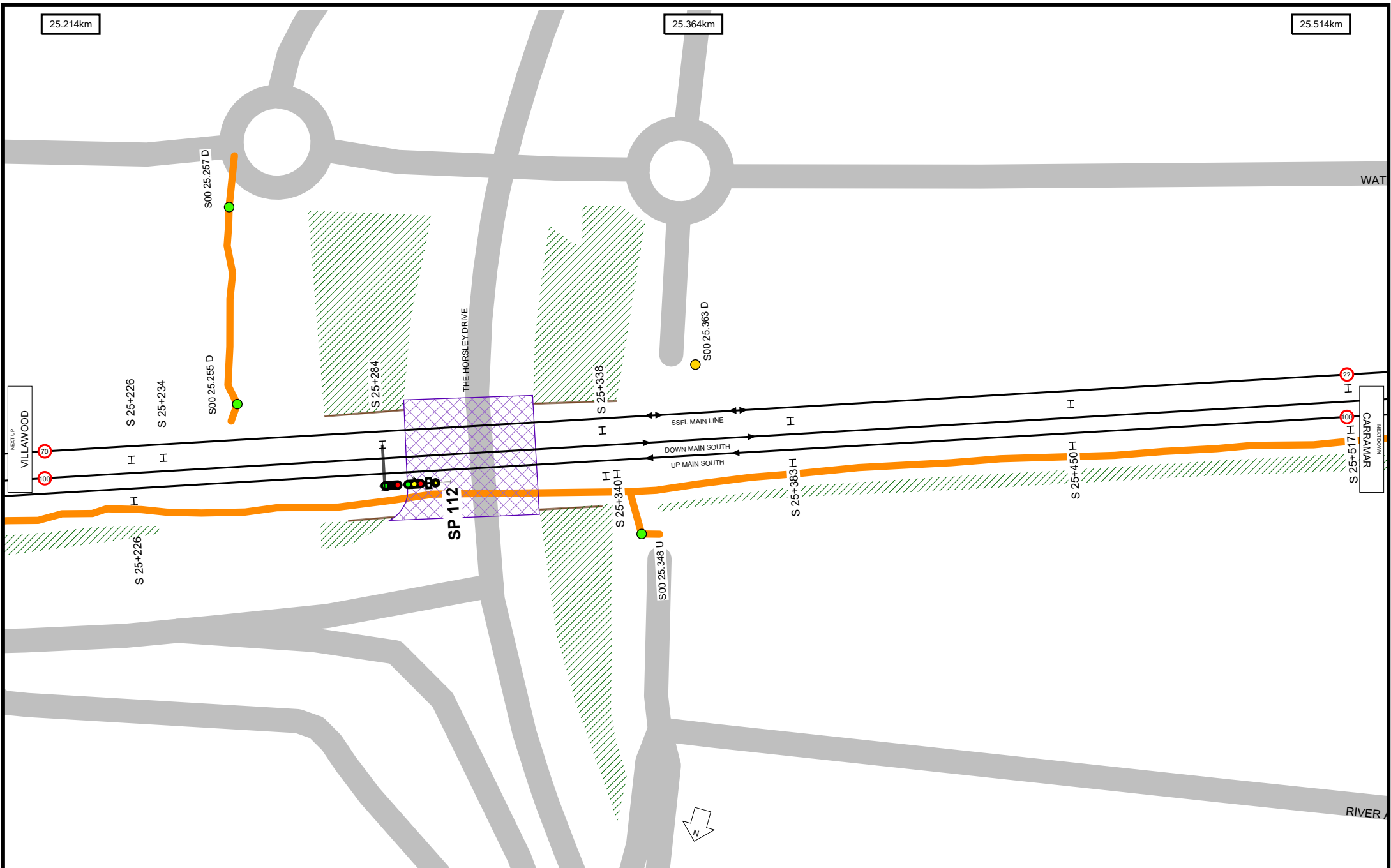
UNCONTROLLED WHEN PRINTED

Data shown here may not have been field verified.
 Do not use for operational purposes without checking against a controlled document.
 For data issues contact GIS.Support@transport.nsw.gov.au



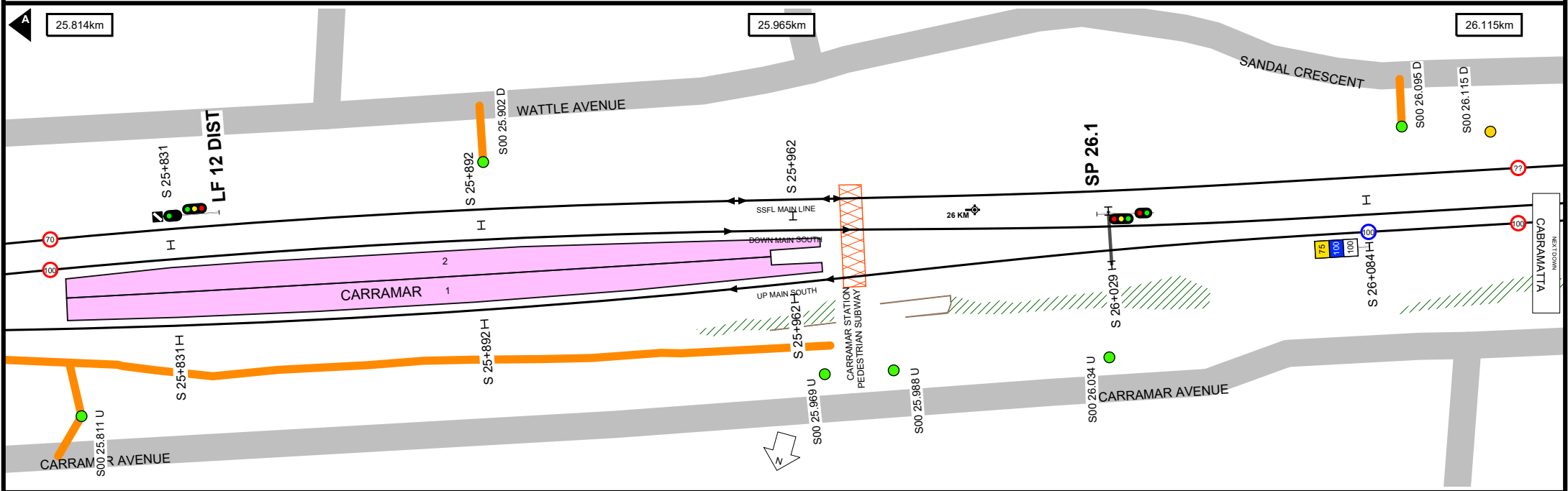
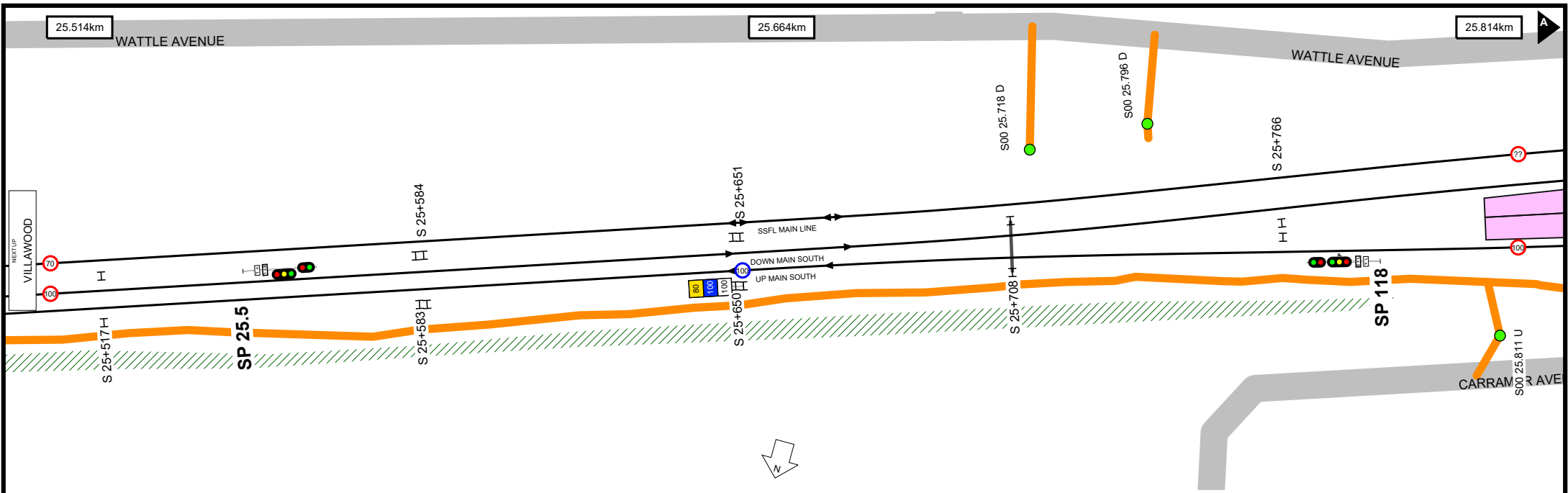


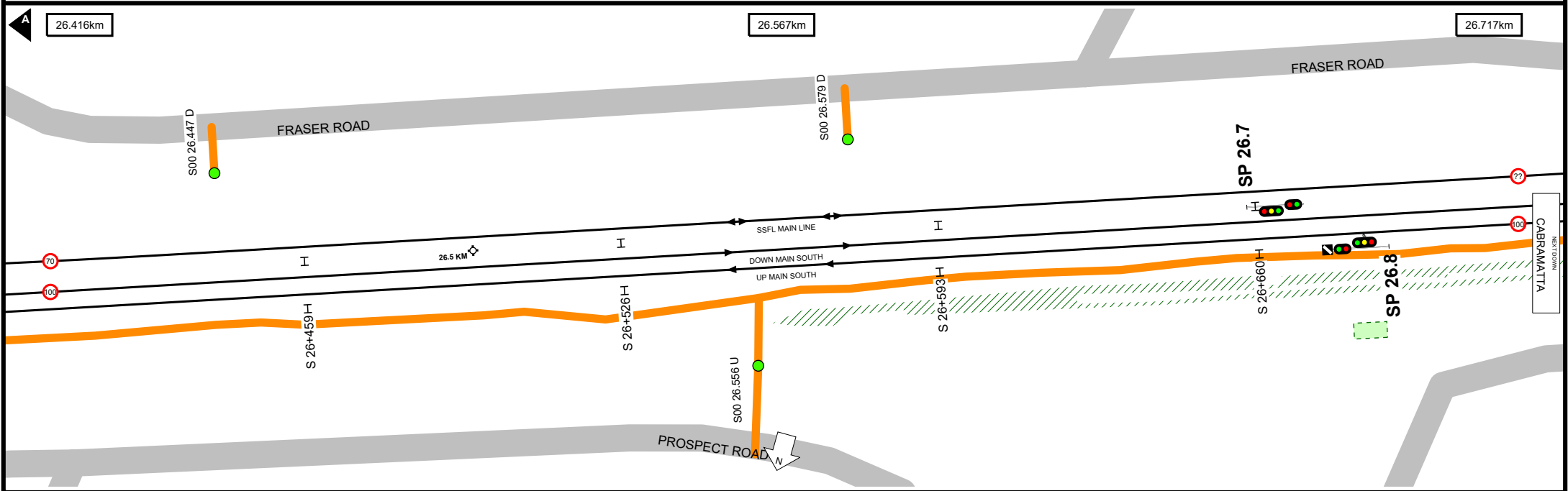
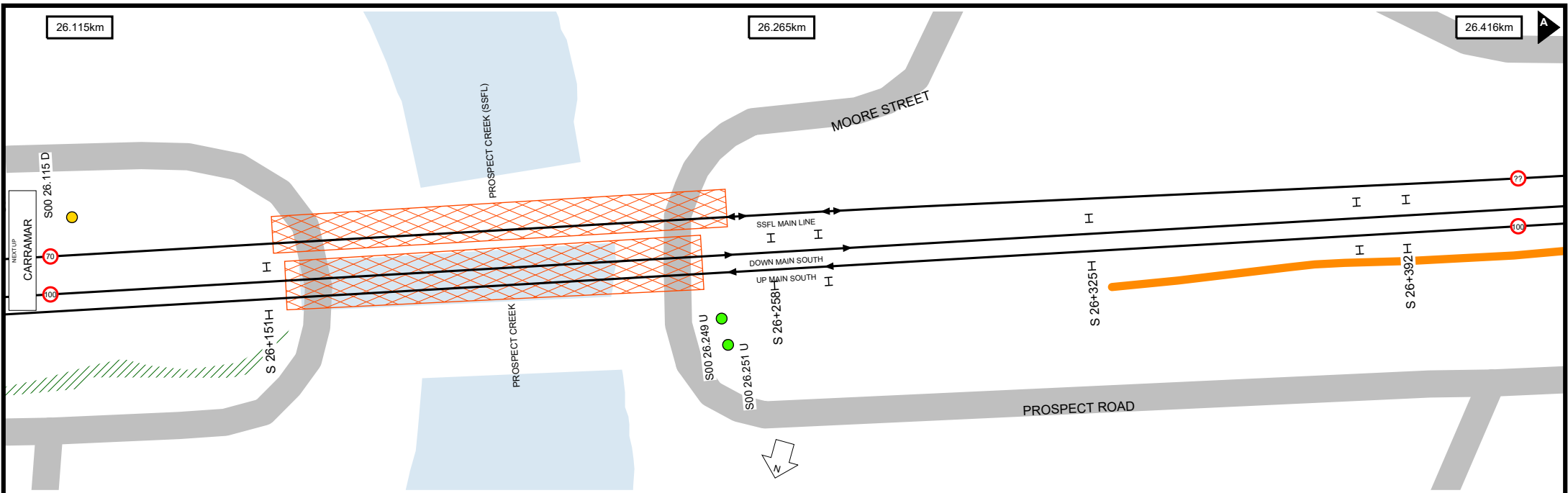




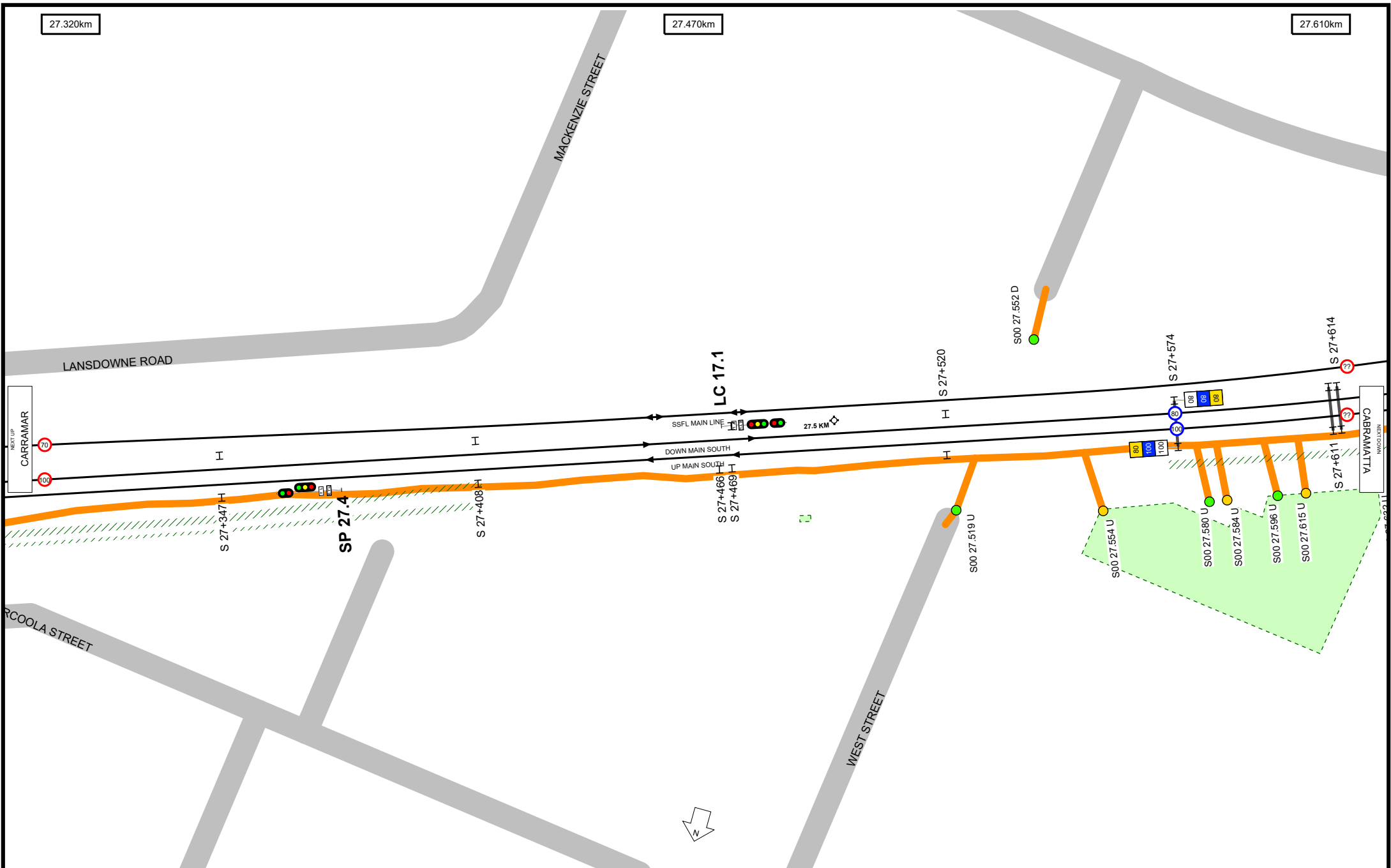
UNCONTROLLED WHEN PRINTED

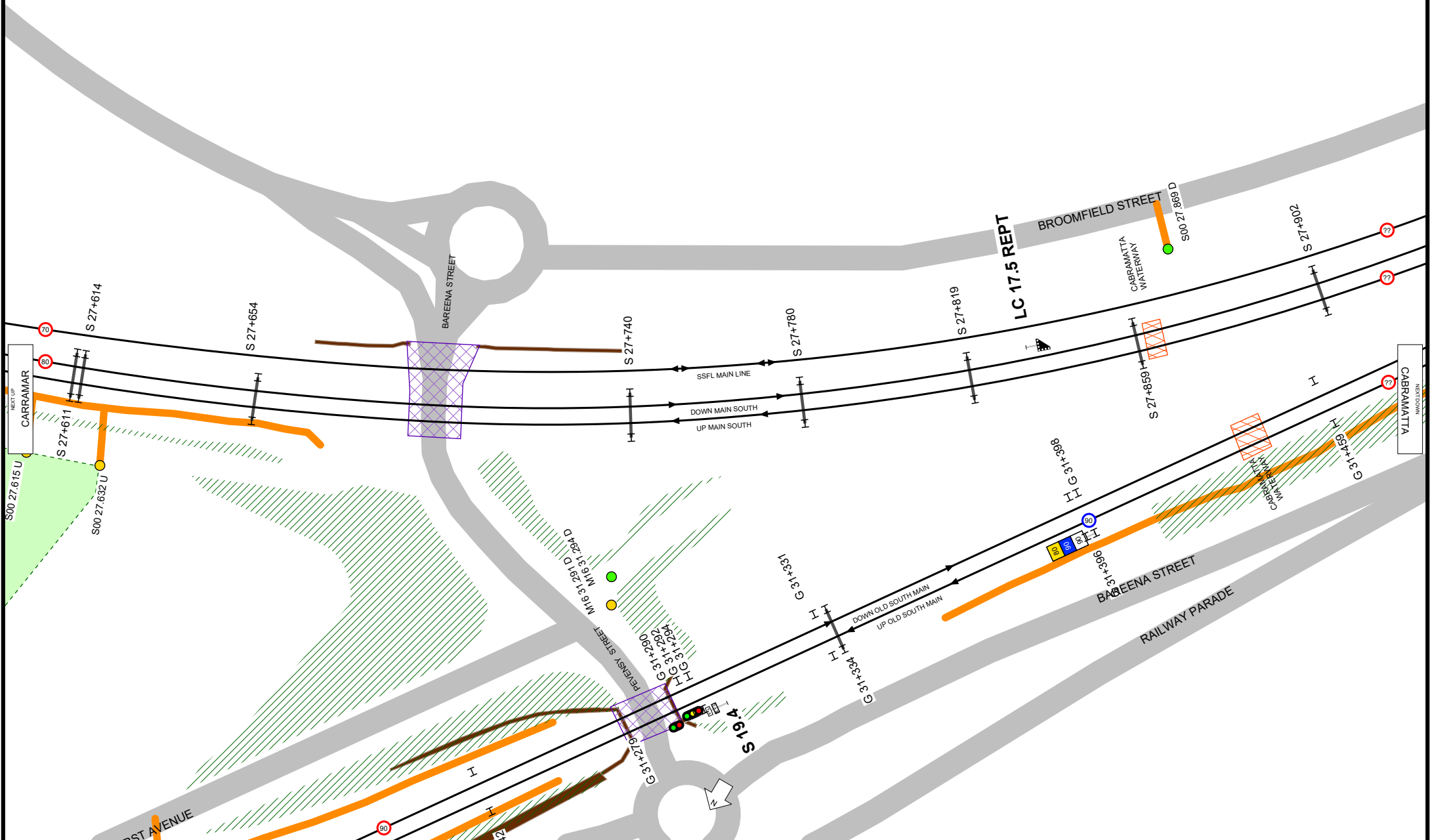
Data shown here may not have been field verified.
 Do not use for operational purposes without checking against a controlled document.
 For data issues contact GIS.Support@transport.nsw.gov.au





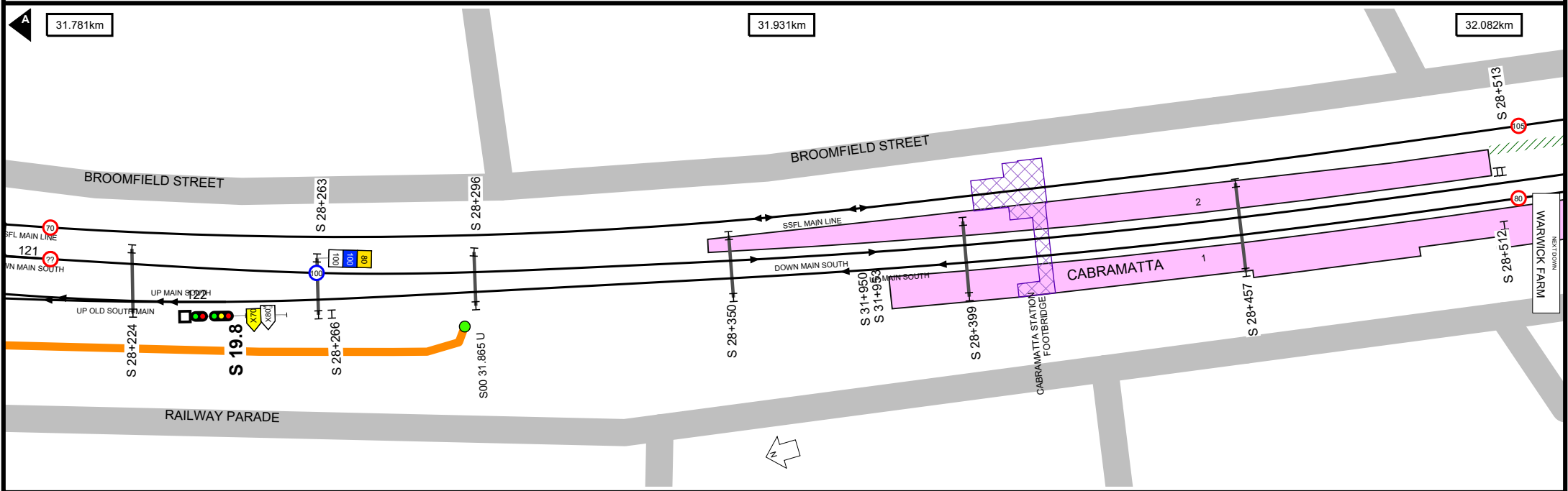
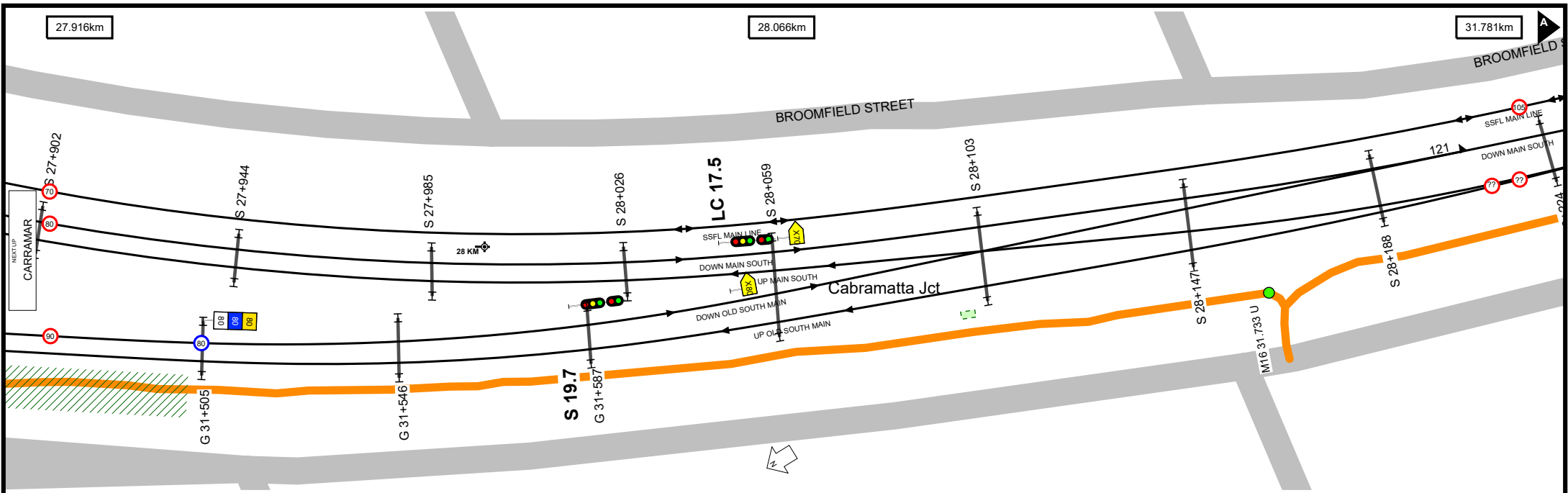


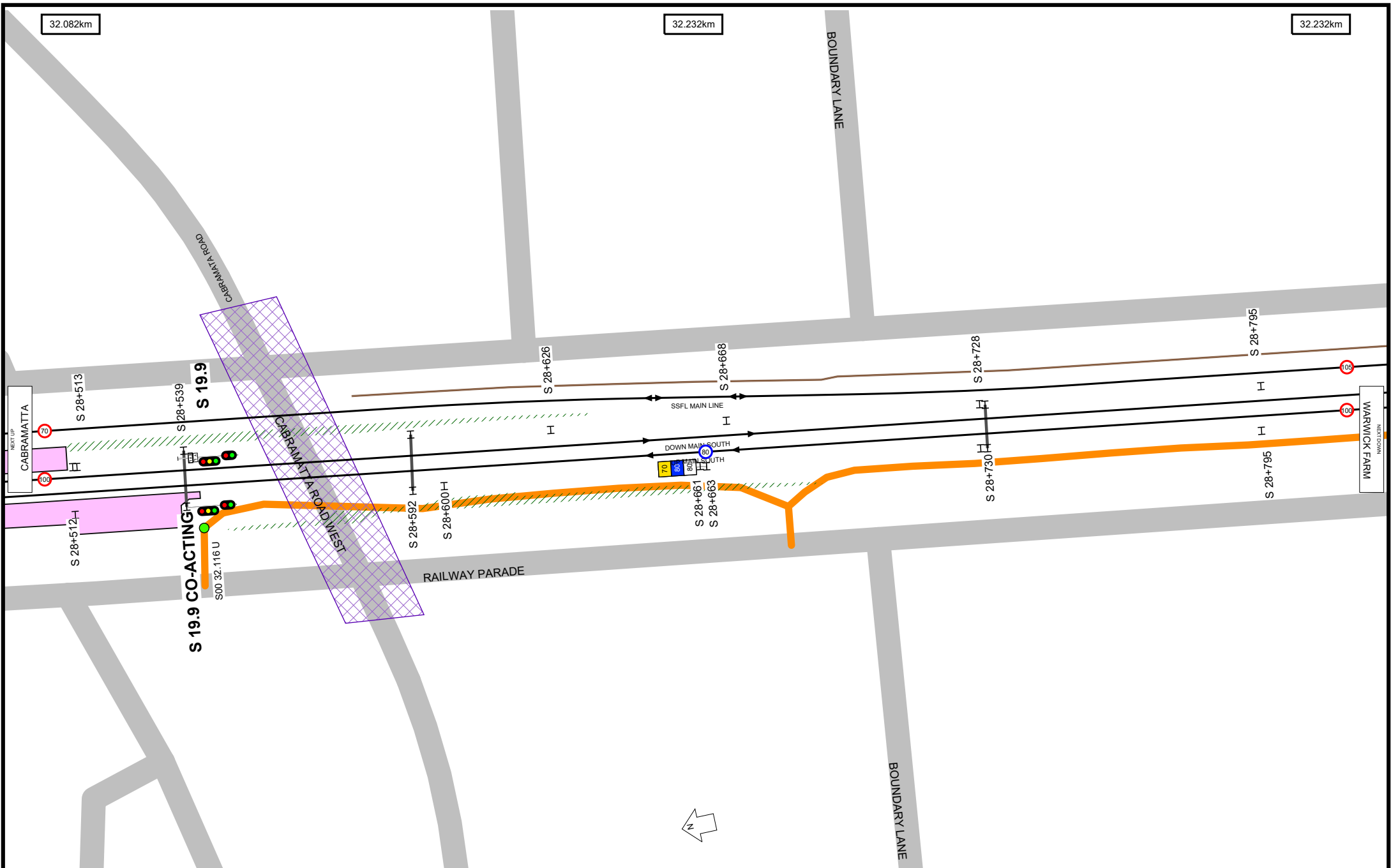




UNCONTROLLED WHEN PRINTED

Data shown here may not have been field verified.
 Do not use for operational purposes without checking against a controlled document.
 For data issues contact GIS.Support@transport.nsw.gov.au





32.082km

32.232km

32.232km



UNCONTROLLED WHEN PRINTED

Data shown here may not have been field verified.
 Do not use for operational purposes without checking against a controlled document.
 For data issues contact GIS.Support@transport.nsw.gov.au



Location Index

BERALA	6
CABRAMATTA	25
CABRAMATTA JCT	25
CABRAMATTA SUB STN	23
CABRAMATTA TRACTION SUBSTATION	23
CARRAMAR	20
CHESTER HILL	13
LEIGHTONFIELD	16
LEIGHTONFIELD BHP STEEL	14
LEIGHTONFIELD SCTN HUT	16
LEIGHTONFIELD YARD	16
LIDCOMBE	2
LIDCOMBE JCT	2
LIDCOMBE TRIANGLE LOOP JCT	3
LIDCOMBE WEST JCT	2
REGENTS PARK	8
SEFTON	11
SEFTON PARK JCT	9
SEFTON PARK NORTH JCT	8
SEFTON PARK SOUTH JCT	10
SEFTON SUB STN	9
SEFTON TRACTION SUBSTATION	9
VILLAWOOD	17
VILLAWOOD TURNBACK	18

Bridge Index

ACCESS ROAD	3	PROSPECT CREEK	21
AMY STREET	8	PROSPECT CREEK (SSFL)	21
BAREENA STREET	24	REGENTS PARK CABLE BRIDGE	8
BERALA STATION PEDESTRIAN SUBWAY	6	REGENTS PARK SYDNEY WATER PIPE	8
BRIDGE STREET	3	REGENTS PARK (M24) WATERWAY	9
CABRAMATA ROAD	26	REGENTS PARK (S00) WATERWAY	9
CABRAMATTA STATION FOOTBRIDGE	25	REGENTS PARK STATION FOOTBRIDGE	8
CABRAMATTA WATERWAY	24	SEFTON STATION FOOTBRIDGE	11
CANLEY VALE STATION FOOTBRIDGE	23	THE HORSLEY DRIVE	19
CARRAMAR STATION PEDESTRIAN SUBWAY	20	VAUGHAN STREET	4
CHESTER HILL ROAD	13	VILLAWOOD STATION FOOTBRIDGE	17
CHURCH STREET	2	VILLAWOOD WATERWAYS FOOTBRIDGE	17
CHURCH STREET SPRINT ACCESS NEAR BRIDGE	2	WATER PIPE FOOTBRIDGE	8
HECTOR STREET	12	WOODS ROAD	11
HECTOR STREET (SSFL)	12	WOODS ROAD (SSFL)	11
JENKINS STREET	7	WOODVILLE ROAD	17
KERRS ROAD	5		
LANSDOWNE ROAD FOOTBRIDGE	22		
LEIGHTONFIELD WATERWAY	16		
LEIGHTONFIELD STATION FOOTBRIDGE	16		
LEIGHTONFIELD WATERWAY	16		
LEIGHTONFIELD WATERWAY (SSFL)	16		
LEIGHTONFIELD WATERWAY FOOTBRIDGE	16		
LIDCOMBE HASLAM'S CREEK	5		
LIDCOMBE STATION FOOTBRIDGE	2		
LIDCOMBE STATION PLATFORM ACCESS FOOTBRIDGE	2		
MILLER ROAD	14		
OLYMPIC DRIVE	3		
OLYMPIC DRIVE & BRIDGE STREET	3		
OLYMPIC DRIVE PEDESTRIAN SUBWAY	3		
PEVENSY STREET	24		

Track & Point

- Existing Track Centreline
- Under Construction / Service Withdrawn
- Proposed Track
- Turnout Point
- Catch Point
- Derail Point
- Turntable

Signal & Sign

- Signal
- Warning Light
- Warning Light - Double
- End Yard Limit Sign
- Yard Limit Sign
- Speed Sign

Station

- Platform

Kilometre Post

- Whole Kilometre Post
- Half Kilometre Post

Corridor Access

- Access Gate
- Pedestrian Access Gate
- Access Road

Safety

- Refuge

Road

- Public Road

Level Crossing & Take Off

- Level Crossing Boundary
- Level Crossing Location

Bridge

- Overbridge
- Underbridge
- Rail Flyover
- Rail Dive
- Pedestrian Footbridge
- Pedestrian Subway

Tunnel

- Tunnel Section Coverage

Embankment

- Embankment

Cutting

- Cutting

Wall

- Wall

Culvert

- Culvert

Waterway

- Waterway

Substation

- Substation Boundary

Overhead Wiring Structure

- OHWS
- OHWS Centreline
- Wood Pole

Additional Map Features

- Track Name & Direction Indicator
- Maximum Train Entry Speed Indicator
- Maximum Train Speed Change Indicator
- Kilometrage Reference Indicator
- Map Strip Join Indicator
- Next Station Up
- Next Station Down