

# DRIVERS ROUTE KNOWLEDGE DIAGRAMS

## EAST HILLS LINE

TURRELLA

BARDWELL PARK

BEXLEY NORTH

KINGSGROVE

BEVERLY HILLS

NARWEE

RIVERWOOD

PADSTOW

REVESBY

PANANIA

EAST HILLS

HOLSWORTHY

GLENFIELD

**Effective Date:** January 2024

**Version:** 4.39

### Explanatory Notes:

Navigate to your area of interest via the station index or by using links created in Adobe bookmarks.

This document is approved for **route knowledge only**.

**Do not use these diagrams for any safety related purpose** without validating the information against a controlled source or in the field.

Information in these diagrams is uncontrolled.

Please report any updates to  
[gjs.support@transport.nsw.gov.au](mailto:gjs.support@transport.nsw.gov.au)



**Copyright:** Sydney Trains

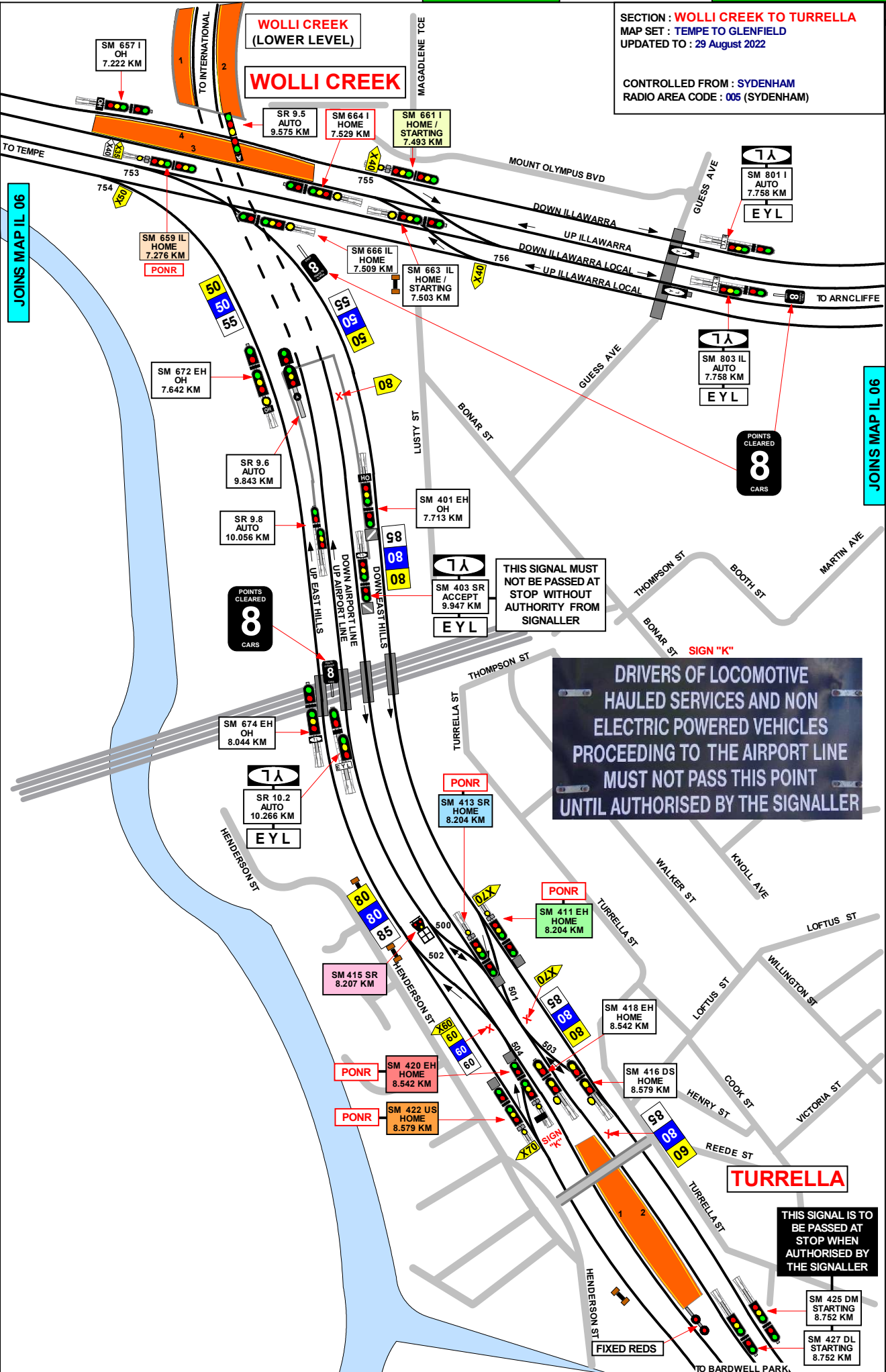
**Ownership:** Geospatial Services

**Location:** TRIM Record No.D2015/581

SECTION : **WOLLI CREEK TO TURRELLA**  
 MAP SET : **TEMPE TO GLENFIELD**  
 UPDATED TO : 29 August 2022

CONTROLLED FROM : **SYDENHAM**  
 RADIO AREA CODE : **005 (SYDENHAM)**

GRADIENT	1 IN 3300
	1 IN 40
	1 IN 42
LEVEL	1 IN 3300



JOINS MAP IL 06

JOINS MAP IL 06

## TURRELLA

TERMINATING TRAINS (UNDER NORMAL CONDITIONS)

FROM	TERMINATE AT	THEN GO TO
DOWN MAIN	DOWN MAIN CLEAR OF SIGNAL SM 416 DS	THE UP AIRPORT LINE VIA Nos. 503 AND 500 POINTS OR SHUNT TO THE UP AIRPORT LINE CLEAR OF SM 415 SR AND RETURN TO No. 1 OR No. 2 PLATFORM
DOWN LOCAL	No. 2 PLATFORM	THE UP AIRPORT LINE VIA No. 500 POINTS OR SHUNT TO THE UP AIRPORT LINE CLEAR OF SM 415 SR AND RETURN TO No. 1 PLATFORM OR THE DOWN MAIN
UP MAIN	UP MAIN	SHUNT FORWARD ON THE UP AIRPORT LINE VIA No. 504 POINTS CLEAR OF SM 415 SR AND RETURN TO No. 2 PLATFORM OR THE DOWN MAIN
UP LOCAL	No. 1 PLATFORM	SHUNT FORWARD ON UP AIRPORT LINE CLEAR OF SM 415 SR AND RETURN TO No. 2 PLATFORM OR THE DOWN MAIN

## PONR

POINT OF NO RETURN FOR DOWN TRAINS

SIGNAL No.	LOCATION	DESTINATION
SM 413 SR	ON DOWN AIRPORT LINE LINE AT 8.204 KM	DOWN MAIN LINE OR DOWN LOCAL
SM 411 EH	ON DOWN DOWN EAST HILLS LINE AT 8.204 KM	DOWN MAIN LINE OR DOWN LOCAL
SM 420 EH	SYDNEY END OF TURRELLA PLATFORM No. 1 ON UP LOCAL	UP AIRPORT LINE OR UP EAST HILLS LINE
SM 422 US	UP MAIN AT TURRELLA ADJACENT TO SIGNAL SM 420 EH	UP AIRPORT LINE OR UP EAST HILLS LINE
SM 659 IL	APPROX. 336 METRES COUNTRY SIDE OF No. 2 PLATFORM TEMPE	EAST HILLS LINE

SIGN "K"

DRIVERS OF LOCOMOTIVE  
HAULED SERVICES AND NON  
ELECTRIC POWERED VEHICLES  
PROCEEDING TO THE AIRPORT LINE  
MUST NOT PASS THIS POINT  
UNTIL AUTHORISED BY THE SIGNALLER

SECTION : TEMPE TO TURRELLA  
MAP SET : TEMPE TO GLENFIELD  
UPDATED TO : 28 October 2021

## INFORMATION

CONTROLLED FROM : SYDENHAM  
RADIO AREA CODE : 005 (SYDENHAM)

SIGNAL	DESTINATION	INDICATION
SM 659 IL	DOWN EAST HILLS	EH
	DOWN ILLAWARRA LOCAL	IL

SIGNAL	DESTINATION	INDICATION
SM 661 I	DOWN ILLAWARRA LOCAL	IL
	DOWN ILLAWARRA	I

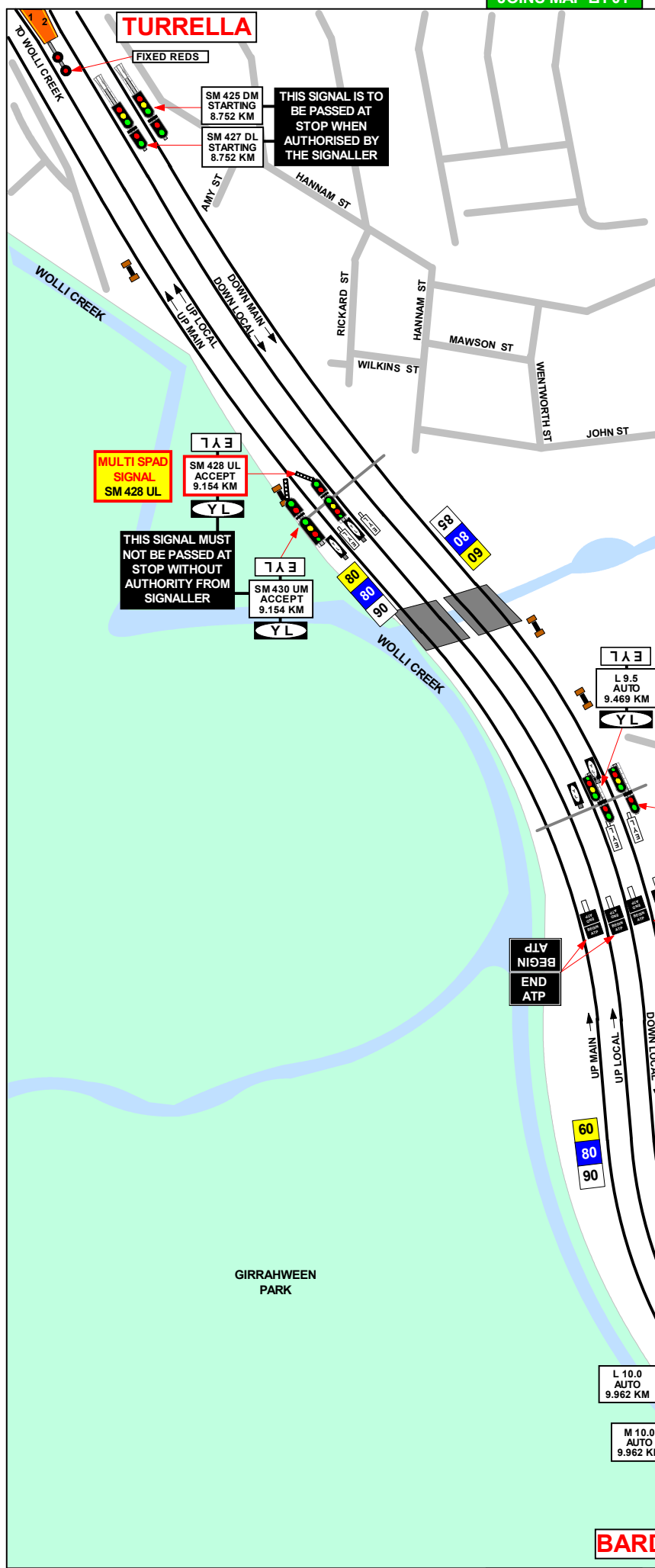
SIGNAL	DESTINATION	INDICATION
SM 415 SR	DOWN MAIN	DM
	DOWN LOCAL	DL
	UP LOCAL	UL

SIGNAL	DESTINATION	INDICATION
SM 413 SR	DOWN MAIN (M)	M
	DOWN MAIN (S)	DM
	DOWN LOCAL (M)	L
	DOWN LOCAL (S)	DL

SIGNAL	DESTINATION	INDICATION
SM 411 EH	DOWN MAIN (M)	M
	DOWN MAIN (S)	DM
	DOWN LOCAL (M)	L
	DOWN LOCAL (S)	DL

SIGNAL	DESTINATION	INDICATION
SM 422 US	UP EAST HILLS (M)	E
	UP EAST HILLS (S)	EH
	UP AL (M)	A
	UP AL (S)	AL

SIGNAL	DESTINATION	INDICATION
SM 420 EH	UP EAST HILLS (M)	E
	UP EAST HILLS (S)	EH
	UP AL (M)	A
	UP AL (S)	AL



SECTION : **TURRELLA TO BARDWELL PARK**  
 MAP SET : TEMPE TO GLENFIELD  
 UPDATED TO : 8 February 2022

**INFORMATION**

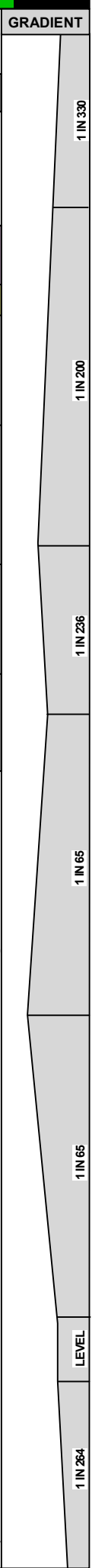
CONTROLLED FROM : SYDENHAM  
 RADIO AREA CODE : 005 (SYDENHAM)  
 : 059 (REVESBY)

**SPECIAL POINTS OF INTEREST**

**TURRELLA**

**TURRELLA**  
 TERMINATING TRAINS (UNDER NORMAL CONDITIONS)

FROM	TERMINATE AT	THEN GO TO
DOWN MAIN	DOWN MAIN CLEAR OF SIGNAL <b>SM 416 DS</b>	THE UP AIRPORT LINE VIA Nos. 503 AND 500 POINTS OR SHUNT TO THE UP AIRPORT LINE CLEAR OF <b>SM 415 SR</b> AND RETURN TO No. 1 OR No. 2 PLATFORM
DOWN LOCAL	No. 2 PLATFORM	THE UP AIRPORT LINE VIA No. 500 POINTS OR SHUNT TO THE UP AIRPORT LINE CLEAR OF <b>SM 415 SR</b> AND RETURN TO No. 1 PLATFORM OR THE DOWN MAIN
UP MAIN	UP MAIN	SHUNT FORWARD ON THE UP AIRPORT LINE VIA No. 504 POINTS CLEAR OF <b>SM 415 SR</b> AND RETURN TO No. 2 PLATFORM OR THE DOWN MAIN
UP LOCAL	No. 1 PLATFORM	SHUNT FORWARD ON UP AIRPORT LINE CLEAR OF <b>SM 415 SR</b> AND RETURN TO No. 2 PLATFORM OR THE DOWN MAIN



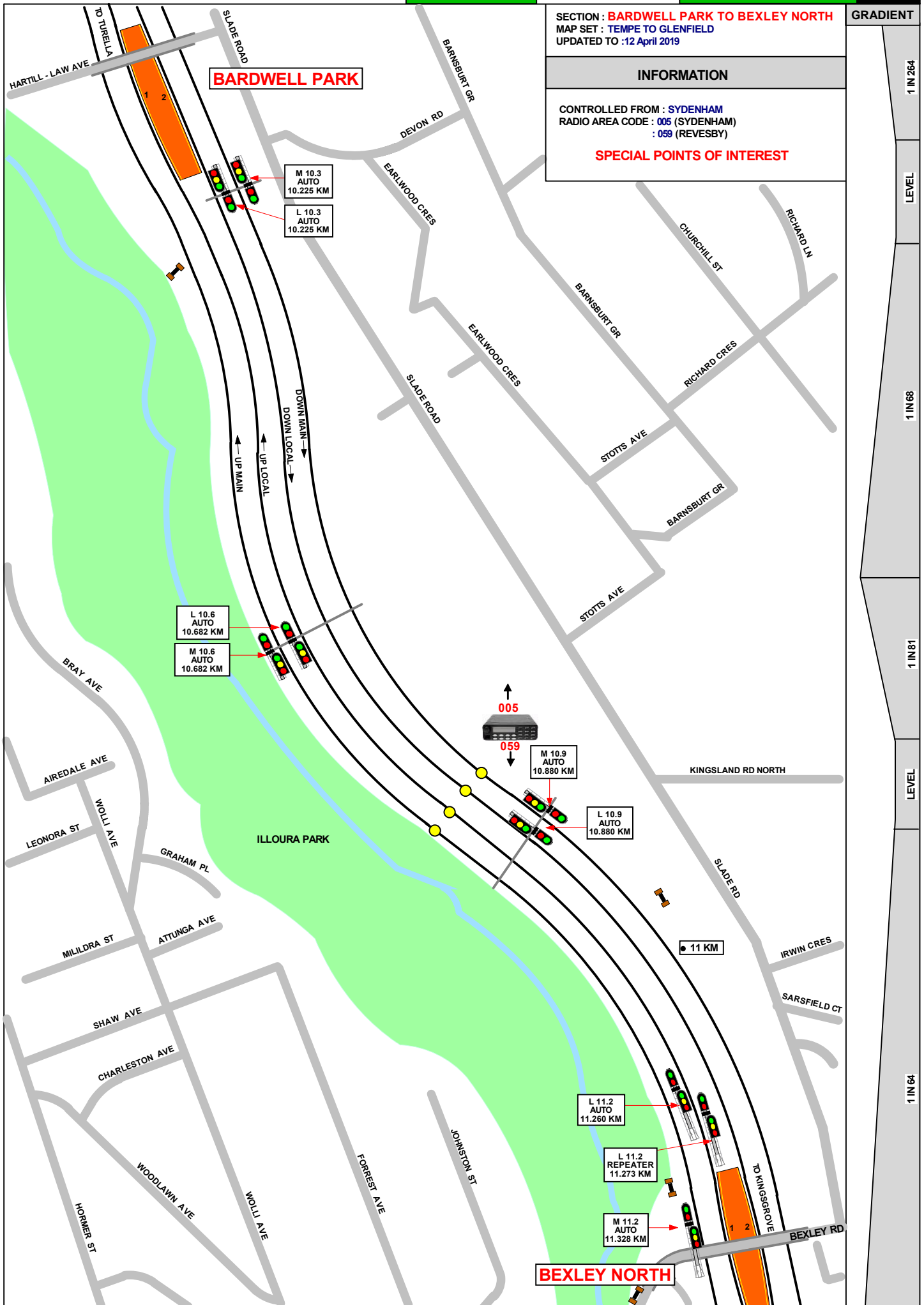
SECTION : **BARDWELL PARK TO BEXLEY NORTH**  
MAP SET : **TEMPE TO GLENFIELD**  
UPDATED TO : 12 April 2019

GRADIENT

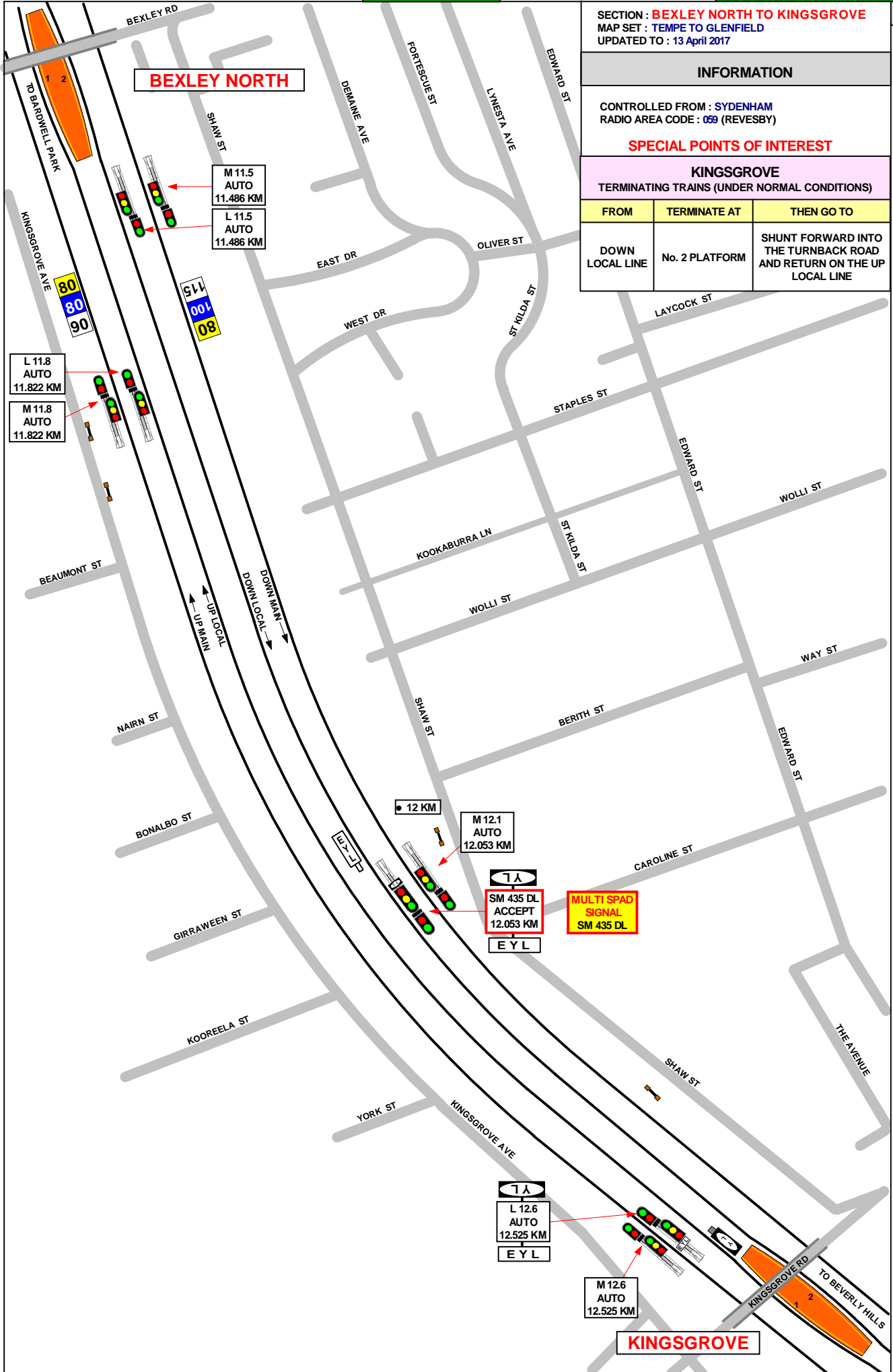
INFORMATION

CONTROLLED FROM : **SYDENHAM**  
RADIO AREA CODE : **005 (SYDENHAM)**  
: **059 (REVESBY)**

SPECIAL POINTS OF INTEREST







SECTION : **BEXLEY NORTH TO KINGSGROVE**  
 MAP SET : TEMPE TO GLENFIELD  
 UPDATED TO : 13 April 2017

**INFORMATION**

CONTROLLED FROM : SYDENHAM  
 RADIO AREA CODE : 059 (REVESBY)

**SPECIAL POINTS OF INTEREST**

**KINGSGROVE**  
 TERMINATING TRAINS (UNDER NORMAL CONDITIONS)

FROM	TERMINATE AT	THEN GO TO
DOWN LOCAL LINE	No. 2 PLATFORM	SHUNT FORWARD INTO THE TURNBACK ROAD AND RETURN ON THE UP LOCAL LINE

**GRADIENT**

1 IN 64
1 IN 60
LEVEL
1 IN 132
1 IN 825
1 IN 118

GRADIENT
1 IN 118
1 IN 1650
1 IN 102
LEVEL
1 IN 314
LEVEL
1 IN 125
1 IN 264

SECTION : **KINGSGROVE TO BEVERLY HILLS**

MAP SET : TEMPE TO GLENFIELD  
UPDATED TO : 15 January 2024

INFORMATION

CONTROLLED FROM : SYDENHAM  
RADIO AREA CODE : 069 (REVESBY)

SPECIAL POINTS OF INTEREST  
**KINGSGROVE**

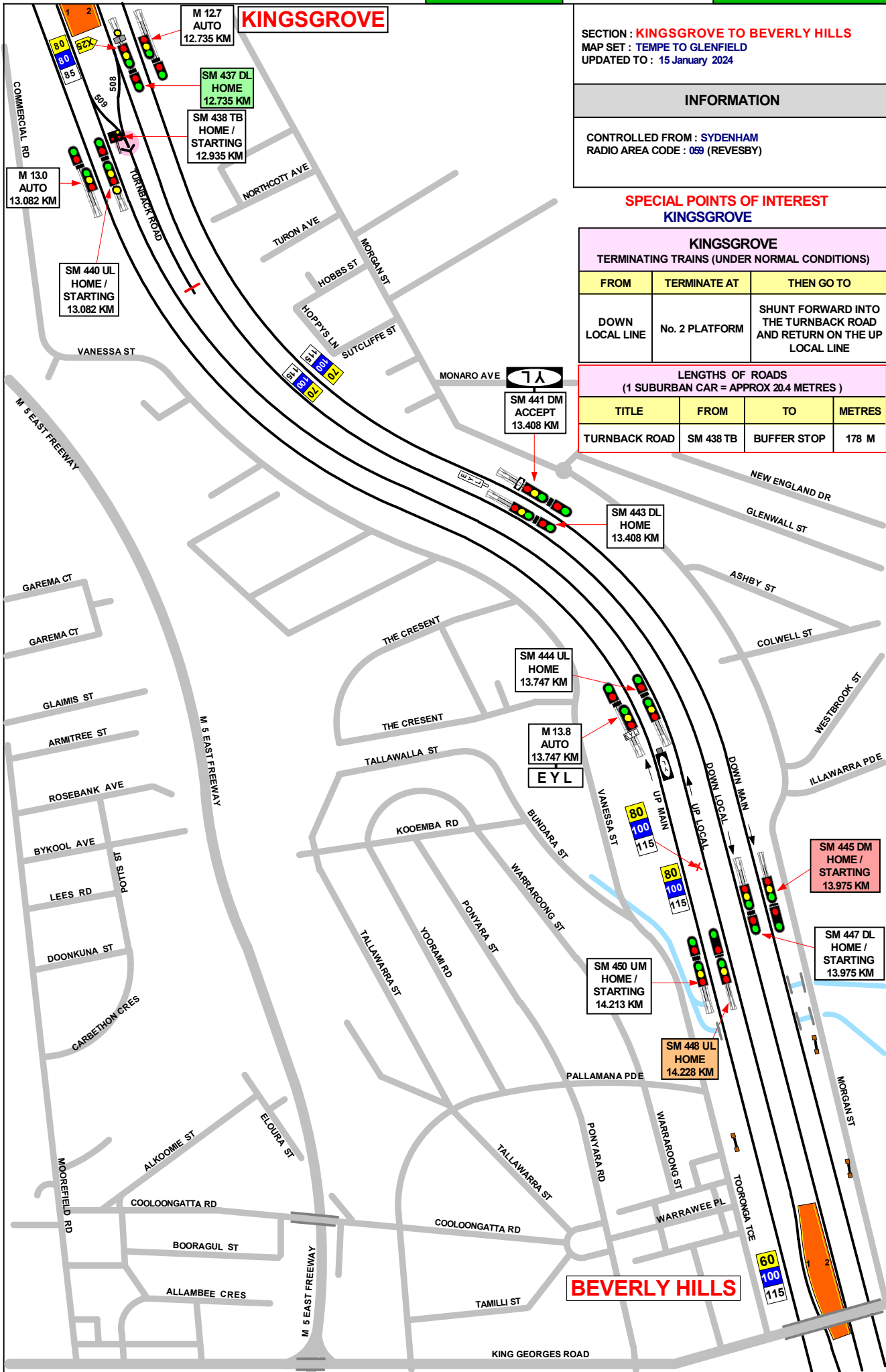
**KINGSGROVE**

TERMINATING TRAINS (UNDER NORMAL CONDITIONS)

FROM	TERMINATE AT	THEN GO TO
DOWN LOCAL LINE	No. 2 PLATFORM	SHUNT FORWARD INTO THE TURNBACK ROAD AND RETURN ON THE UP LOCAL LINE

LENGTHS OF ROADS  
(1 SUBURBAN CAR = APPROX 20.4 METRES)

TITLE	FROM	TO	METRES
TURNBACK ROAD	SM 438 TB	BUFFER STOP	178 M

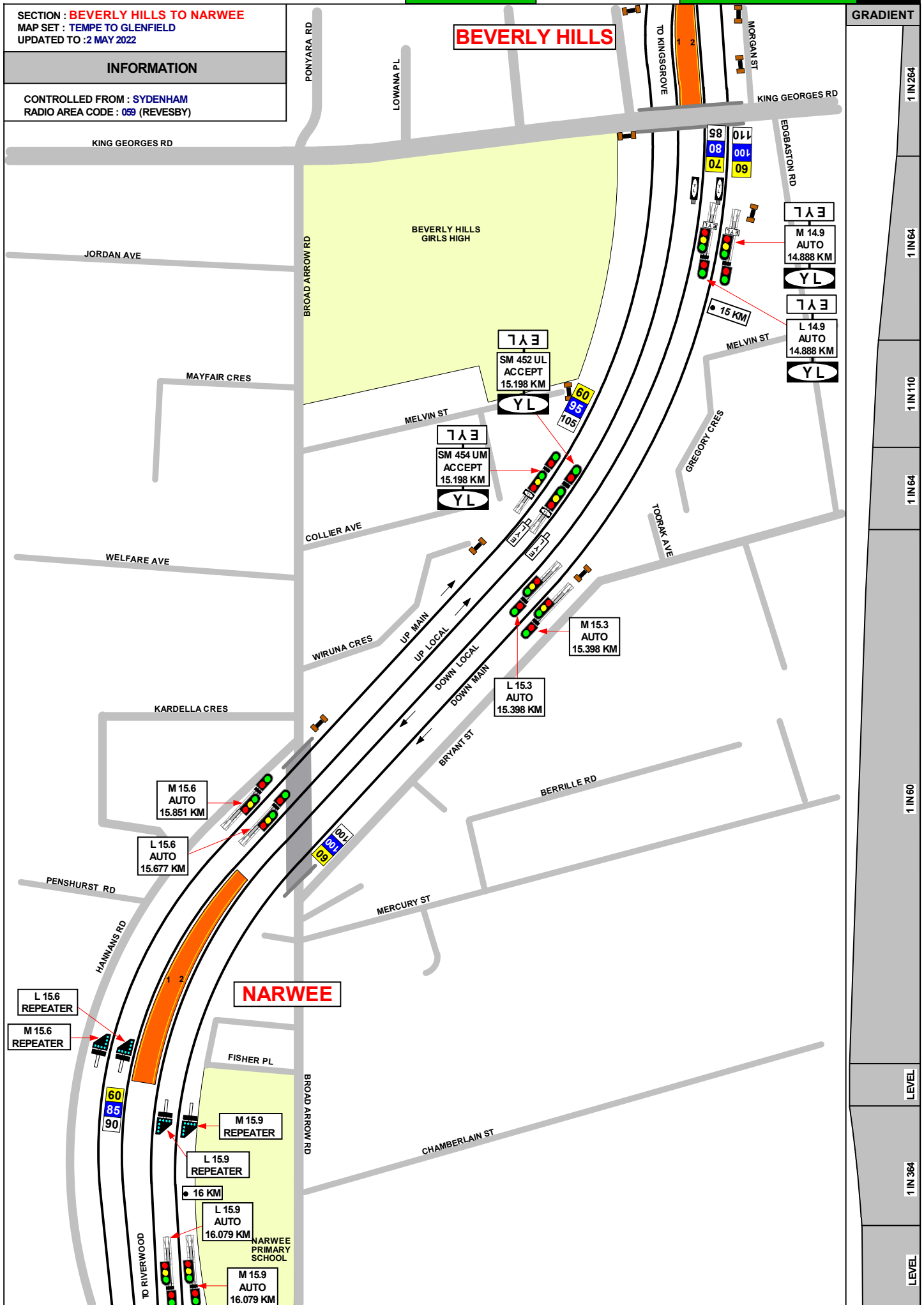


SECTION : BEVERLY HILLS TO NARWEE  
MAP SET : TEMPE TO GLENFIELD  
UPDATED TO : 2 MAY 2022

INFORMATION

CONTROLLED FROM : SYDENHAM  
RADIO AREA CODE : 059 (REVESBY)

GRADIENT





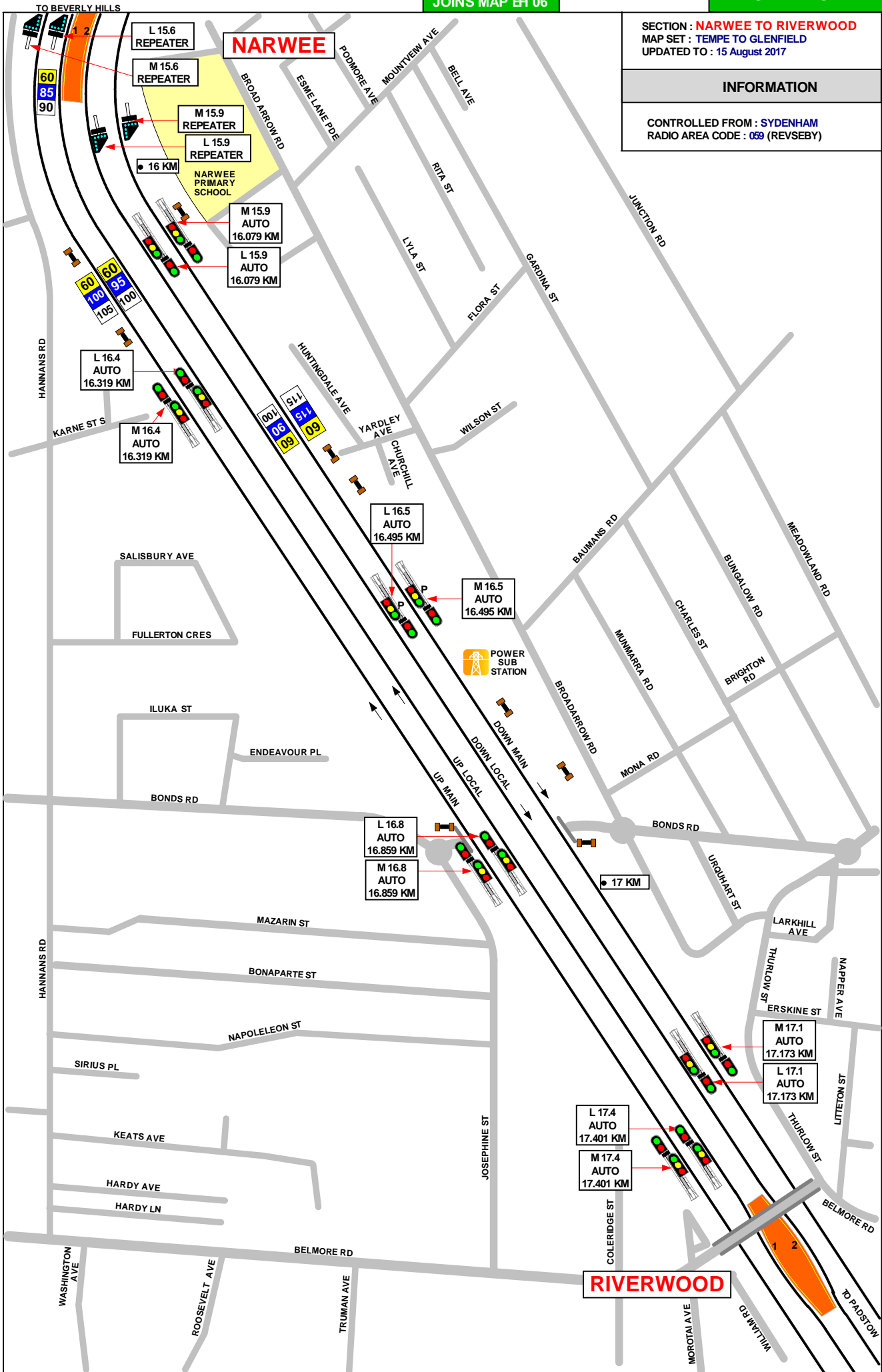
SECTION : **NARWEE TO RIVERWOOD**  
MAP SET : TEMPE TO GLENFIELD  
UPDATED TO : 15 August 2017

GRADIENT

INFORMATION

CONTROLLED FROM : SYDENHAM  
RADIO AREA CODE : 059 (REVSEBY)

1 IN 364  
LEVEL  
1 IN 66  
1 IN 60  
LEVEL  
1 IN 65  
LEVEL  
1 IN 69  
LEVEL  
1 IN 59



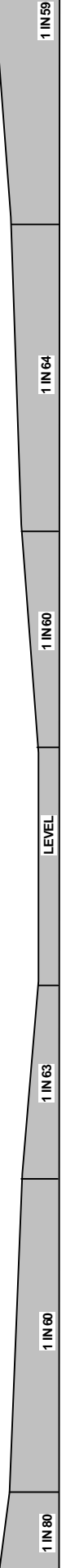
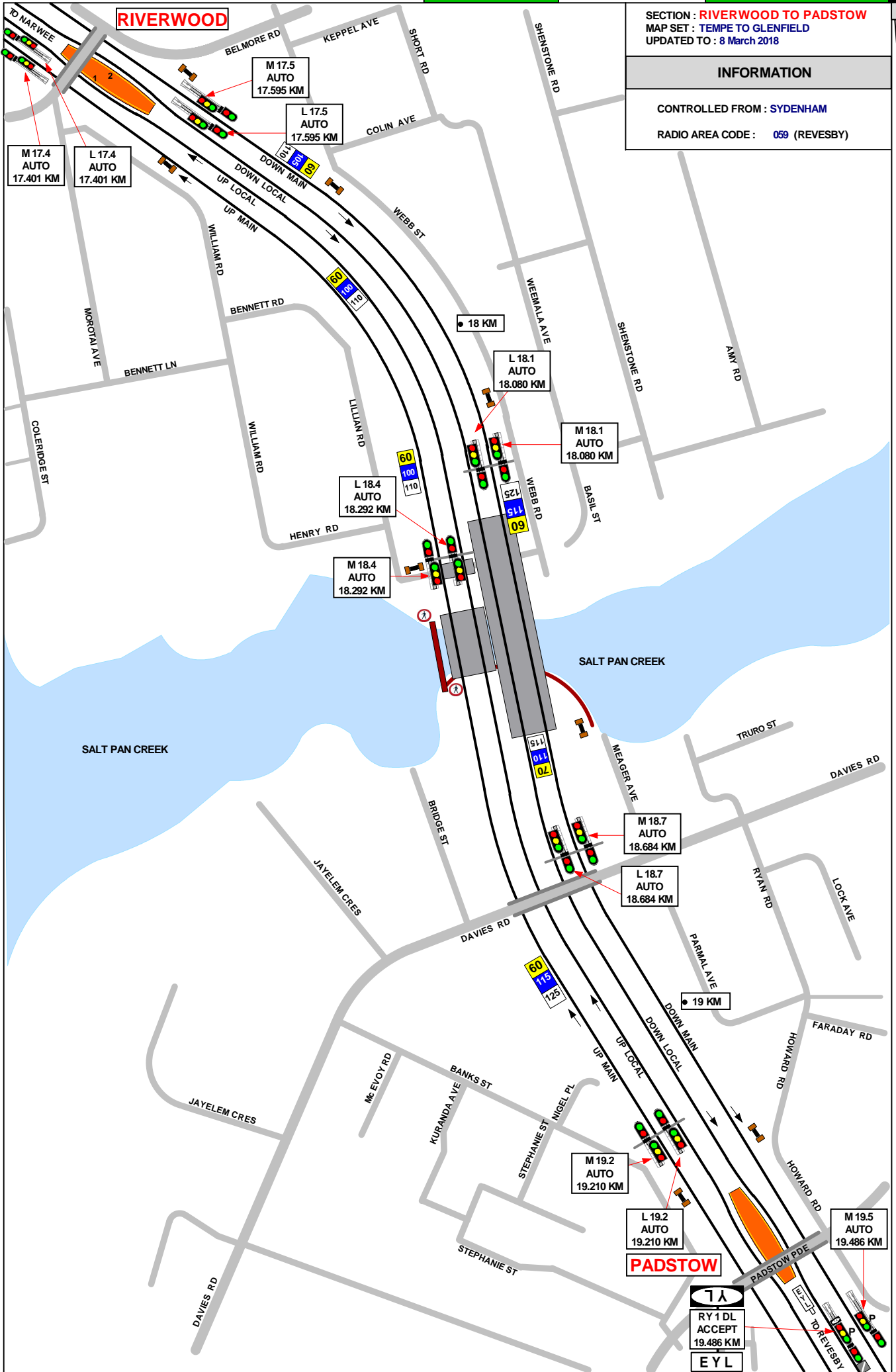
SECTION : RIVERWOOD TO PADSTOW  
MAP SET : TEMPE TO GLENFIELD  
UPDATED TO : 8 March 2018

GRADIENT

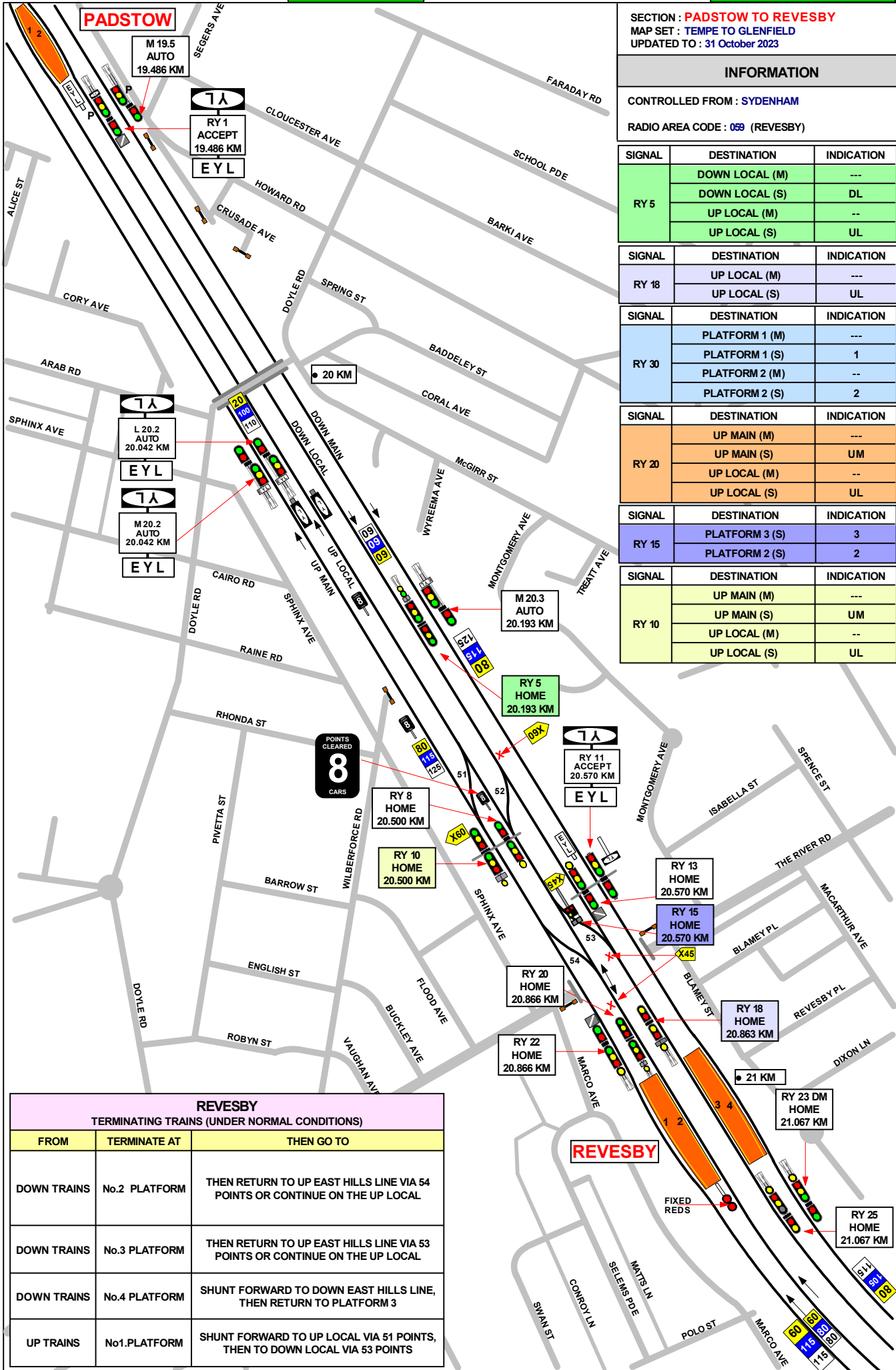
INFORMATION

CONTROLLED FROM : SYDENHAM

RADIO AREA CODE : 059 (REVESBY)



7A  
RY 1 DL  
ACCEPT  
19.486 KM  
EYL



SECTION : **PADSTOW TO REVESBY**  
 MAP SET : TEMPE TO GLENFIELD  
 UPDATED TO : 31 October 2023

**INFORMATION**

CONTROLLED FROM : SYDENHAM  
 RADIO AREA CODE : 059 (REVESBY)

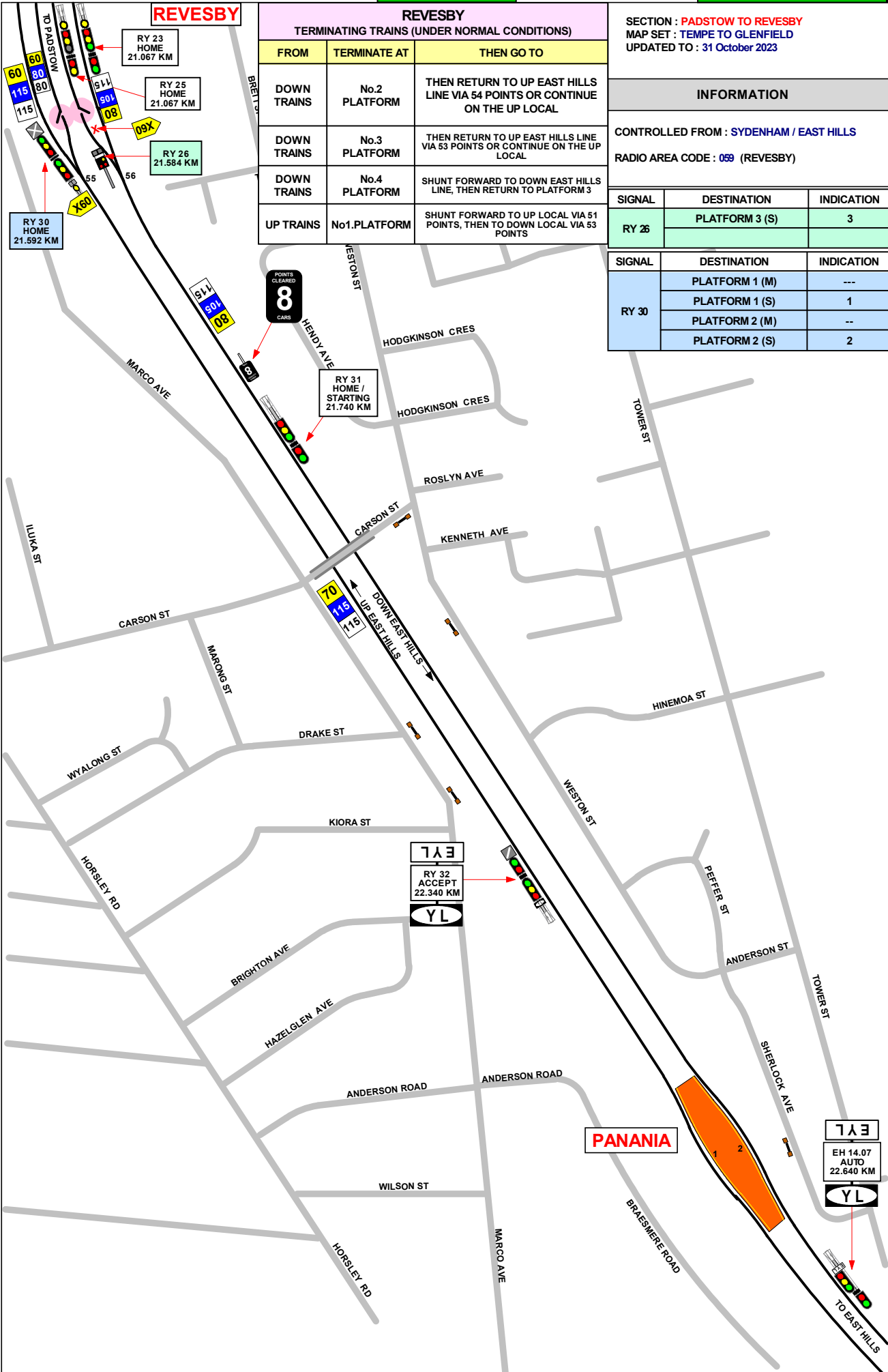
SIGNAL	DESTINATION	INDICATION
RY 5	DOWN LOCAL (M)	---
	DOWN LOCAL (S)	DL
	UP LOCAL (M)	--
	UP LOCAL (S)	UL
RY 18	UP LOCAL (M)	---
	UP LOCAL (S)	UL
RY 30	PLATFORM 1 (M)	---
	PLATFORM 1 (S)	1
	PLATFORM 2 (M)	--
	PLATFORM 2 (S)	2
RY 20	UP MAIN (M)	---
	UP MAIN (S)	UM
	UP LOCAL (M)	--
	UP LOCAL (S)	UL
RY 15	PLATFORM 3 (S)	3
	PLATFORM 2 (S)	2
RY 10	UP MAIN (M)	---
	UP MAIN (S)	UM
	UP LOCAL (M)	--
	UP LOCAL (S)	UL

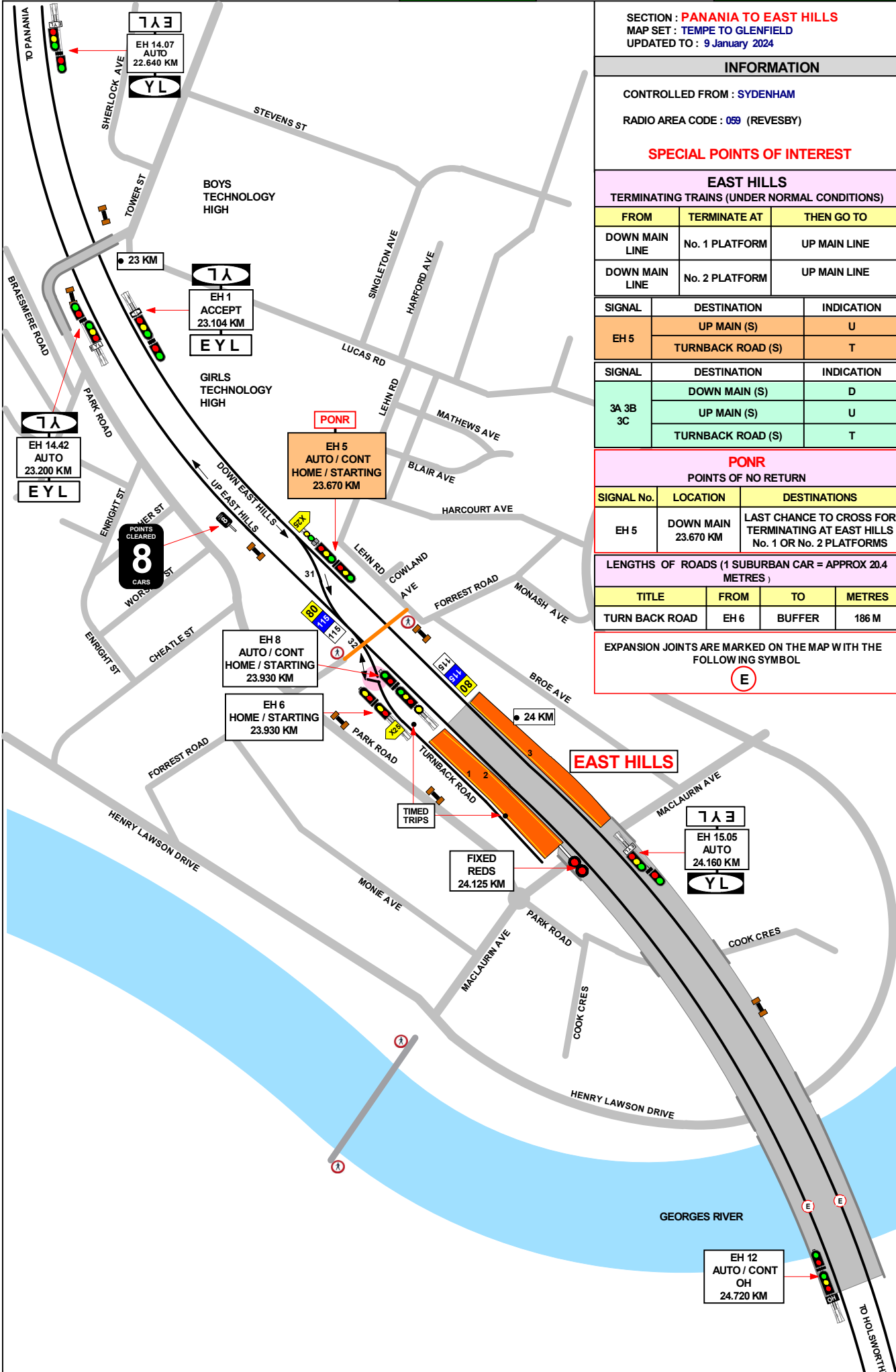
GRADIENT

1 IN 150
1 IN 140
1 IN 60
1 IN 254
1 IN 60
1 IN 825

**REVESBY**  
 TERMINATING TRAINS (UNDER NORMAL CONDITIONS)

FROM	TERMINATE AT	THEN GO TO
DOWN TRAINS	No.2 PLATFORM	THEN RETURN TO UP EAST HILLS LINE VIA 54 POINTS OR CONTINUE ON THE UP LOCAL
DOWN TRAINS	No.3 PLATFORM	THEN RETURN TO UP EAST HILLS LINE VIA 53 POINTS OR CONTINUE ON THE UP LOCAL
DOWN TRAINS	No.4 PLATFORM	SHUNT FORWARD TO DOWN EAST HILLS LINE, THEN RETURN TO PLATFORM 3
UP TRAINS	No1.PLATFORM	SHUNT FORWARD TO UP LOCAL VIA 51 POINTS, THEN TO DOWN LOCAL VIA 53 POINTS





SECTION : PANANIA TO EAST HILLS  
 MAP SET : TEMPE TO GLENFIELD  
 UPDATED TO : 9 January 2024

**INFORMATION**

CONTROLLED FROM : SYDENHAM  
 RADIO AREA CODE : 059 (REVESBY)

**SPECIAL POINTS OF INTEREST**

**EAST HILLS**

TERMINATING TRAINS (UNDER NORMAL CONDITIONS)

FROM	TERMINATE AT	THEN GO TO
DOWN MAIN LINE	No. 1 PLATFORM	UP MAIN LINE
DOWN MAIN LINE	No. 2 PLATFORM	UP MAIN LINE

SIGNAL	DESTINATION	INDICATION
EH 5	UP MAIN (S)	U
	TURNBACK ROAD (S)	T

SIGNAL	DESTINATION	INDICATION
3A 3B 3C	DOWN MAIN (S)	D
	UP MAIN (S)	U
	TURNBACK ROAD (S)	T

**PONR**

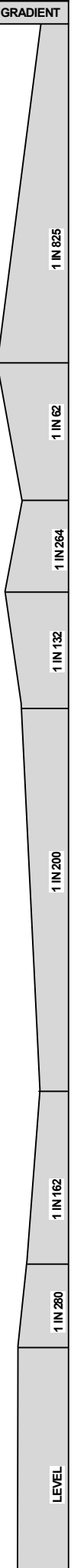
POINTS OF NO RETURN

SIGNAL No.	LOCATION	DESTINATIONS
EH 5	DOWN MAIN 23.670 KM	LAST CHANCE TO CROSS FOR TERMINATING AT EAST HILLS No. 1 OR No. 2 PLATFORMS

LENGTHS OF ROADS (1 SUBURBAN CAR = APPROX 20.4 METRES)

TITLE	FROM	TO	METRES
TURN BACK ROAD	EH 6	BUFFER	186 M

EXPANSION JOINTS ARE MARKED ON THE MAP WITH THE FOLLOWING SYMBOL





SECTION : EAST HILLS TO HOLSWORTHY  
MAP SET : TEMPE TO GLENFIELD  
UPDATED TO : 15 July 2014

INFORMATION

CONTROLLED FROM : SYDENHAM

RADIO AREA CODE : 069 (REVESBY)  
: 060 (GLENFIELD)

SPECIAL POINTS OF INTEREST

EXPANSION JOINTS ARE MARKED ON THE MAP WITH THE FOLLOWING SYMBOL



GRADIENT

1 IN 162

1 IN 280

LEVEL

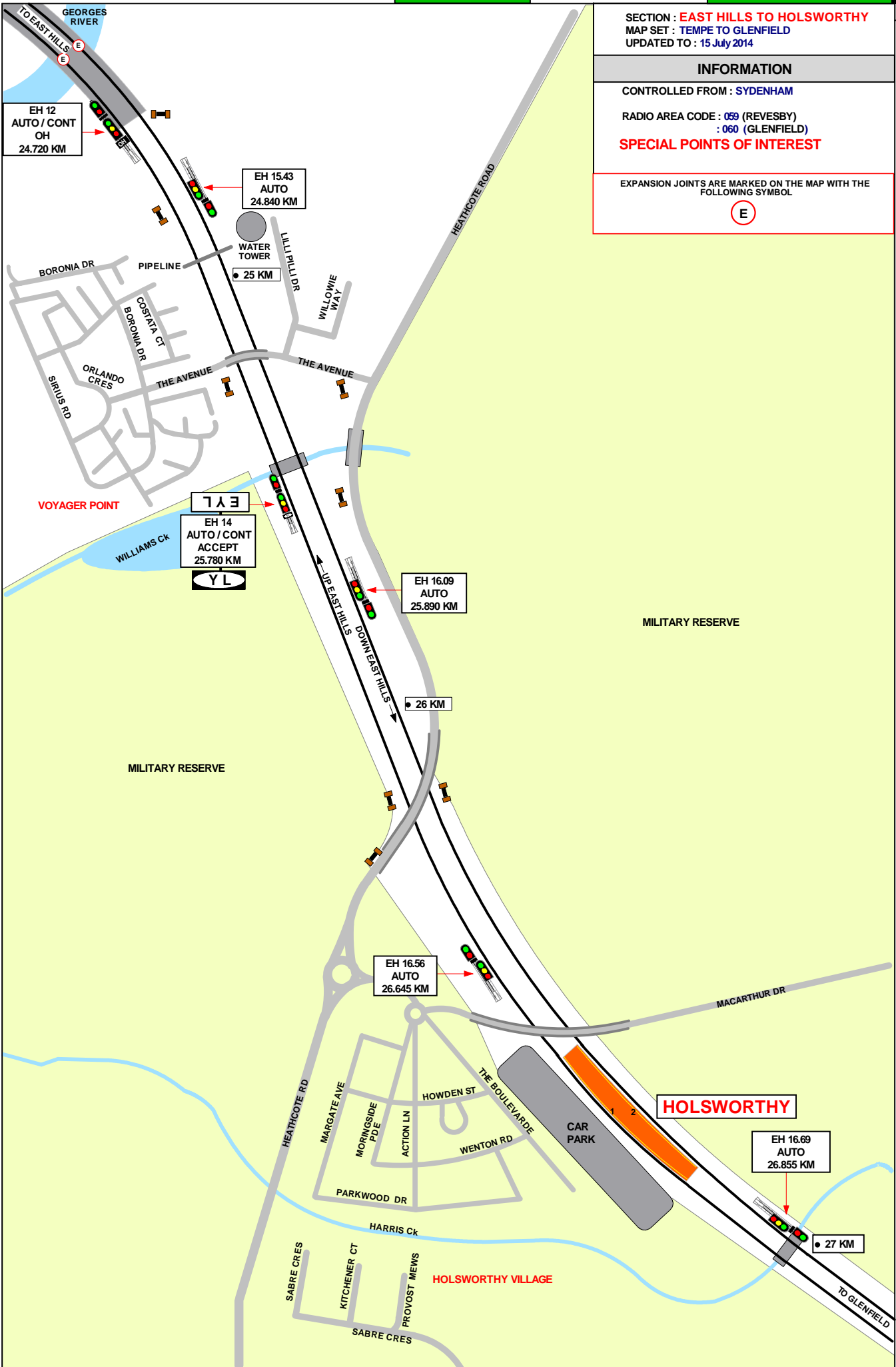
1 IN 107

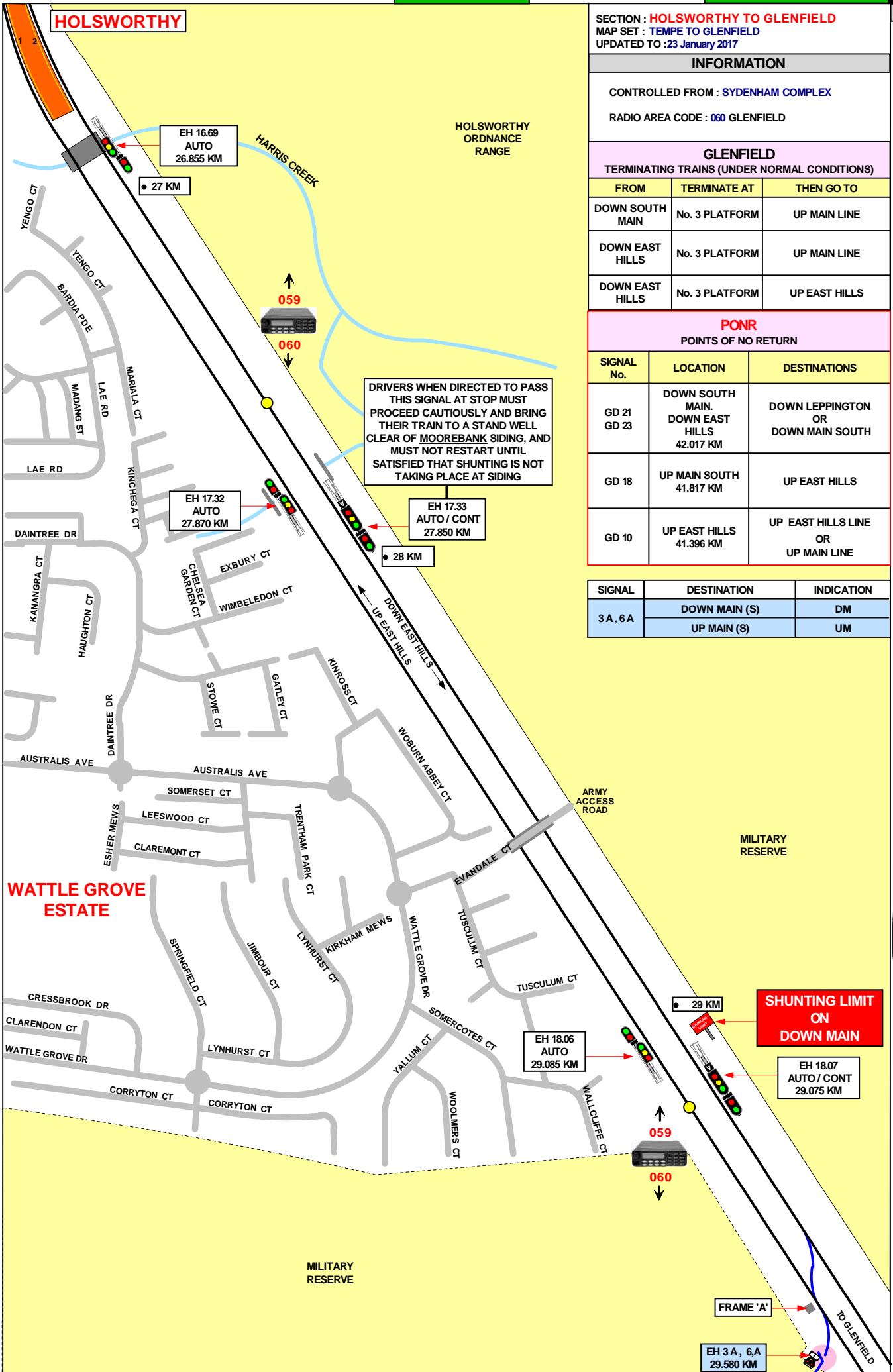
LEVEL

1 IN 200

LEVEL

1 IN 200





**HOLSWORTHY**

SECTION : **HOLSWORTHY TO GLENFIELD**  
 MAP SET : TEMPE TO GLENFIELD  
 UPDATED TO : 23 January 2017

GRADIENT

**INFORMATION**

CONTROLLED FROM : SYDENHAM COMPLEX  
 RADIO AREA CODE : 060 GLENFIELD

**GLENFIELD**

TERMINATING TRAINS (UNDER NORMAL CONDITIONS)

FROM	TERMINATE AT	THEN GO TO
DOWN SOUTH MAIN	No. 3 PLATFORM	UP MAIN LINE
DOWN EAST HILLS	No. 3 PLATFORM	UP MAIN LINE
DOWN EAST HILLS	No. 3 PLATFORM	UP EAST HILLS

**PONR**

POINTS OF NO RETURN

SIGNAL No.	LOCATION	DESTINATIONS
GD 21 GD 23	DOWN SOUTH MAIN. DOWN EAST HILLS 42.017 KM	DOWN LEPPINGTON OR DOWN MAIN SOUTH
GD 18	UP MAIN SOUTH 41.817 KM	UP EAST HILLS
GD 10	UP EAST HILLS 41.396 KM	UP EAST HILLS LINE OR UP MAIN LINE

DRIVERS WHEN DIRECTED TO PASS THIS SIGNAL AT STOP MUST PROCEED CAUTIOUSLY AND BRING THEIR TRAIN TO A STAND WELL CLEAR OF **MOOREBANK** SIDING, AND MUST NOT RESTART UNTIL SATISFIED THAT SHUNTING IS NOT TAKING PLACE AT SIDING

SIGNAL	DESTINATION	INDICATION
3 A, 6 A	DOWN MAIN (S)	DM
	UP MAIN (S)	UM

1 IN 200

LEVEL

1 IN 200

LEVEL

JOINS MAP E H 13

SECTION : **HOLSWORTHY TO GLENFIELD**  
 MAP SET : TEMPE TO GLENFIELD  
 UPDATED TO : 10 January 2024

GRADIENT

1 IN 200

INFORMATION

CONTROLLED FROM : SYDENHAM COMPLEX

RADIO AREA CODE : 060 (GLENFIELD)  
 054 (SEFTON PARK)

**SPECIAL POINTS OF INTEREST**  
**GLENFIELD**

GLENFIELD

TERMINATING TRAINS (UNDER NORMAL CONDITIONS)

FROM	TERMINATE AT	THEN GO TO
DOWN SOUTH MAIN	No. 3 PLATFORM	UP MAIN LINE
DOWN EAST HILLS	No. 3 PLATFORM	UP MAIN LINE
DOWN EAST HILLS	No. 3 PLATFORM	UP EAST HILLS

LEVEL

SIGNAL	DESTINATION	INDICATION
GD 5	DN EAST HILLS (M)	---
	DN EAST HILLS (S)	EH
	DOWN MAIN (M)	---
	DOWN MAIN (S)	DM

1 IN 200

LEVEL

SIGNAL	DESTINATION	INDICATION
GD 7	DN EAST HILLS (M)	---
	DN EAST HILLS (S)	EH
	DOWN MAIN (M)	---
	DOWN MAIN (S)	DM

1 IN 193

SIGNAL	DESTINATION	INDICATION
GD 10	UP EAST HILLS (M)	---
	UP EAST HILLS (S)	EH
	UP MAIN (M)	---
	UP MAIN (S)	UM

SIGNAL	DESTINATION	INDICATION
GD 18	UP EAST HILLS (M)	---
	UP EAST HILLS (S)	EH
	UP MAIN (M)	---
	UP MAIN (S)	UM

SIGNAL	DESTINATION	INDICATION	CO-ACTING
GD 16	UP EAST HILLS (M)	---	E
	UP EAST HILLS (S)	EH	E
	UP MAIN (M)	---	M
	UP MAIN (S)	UM	M

LEVEL

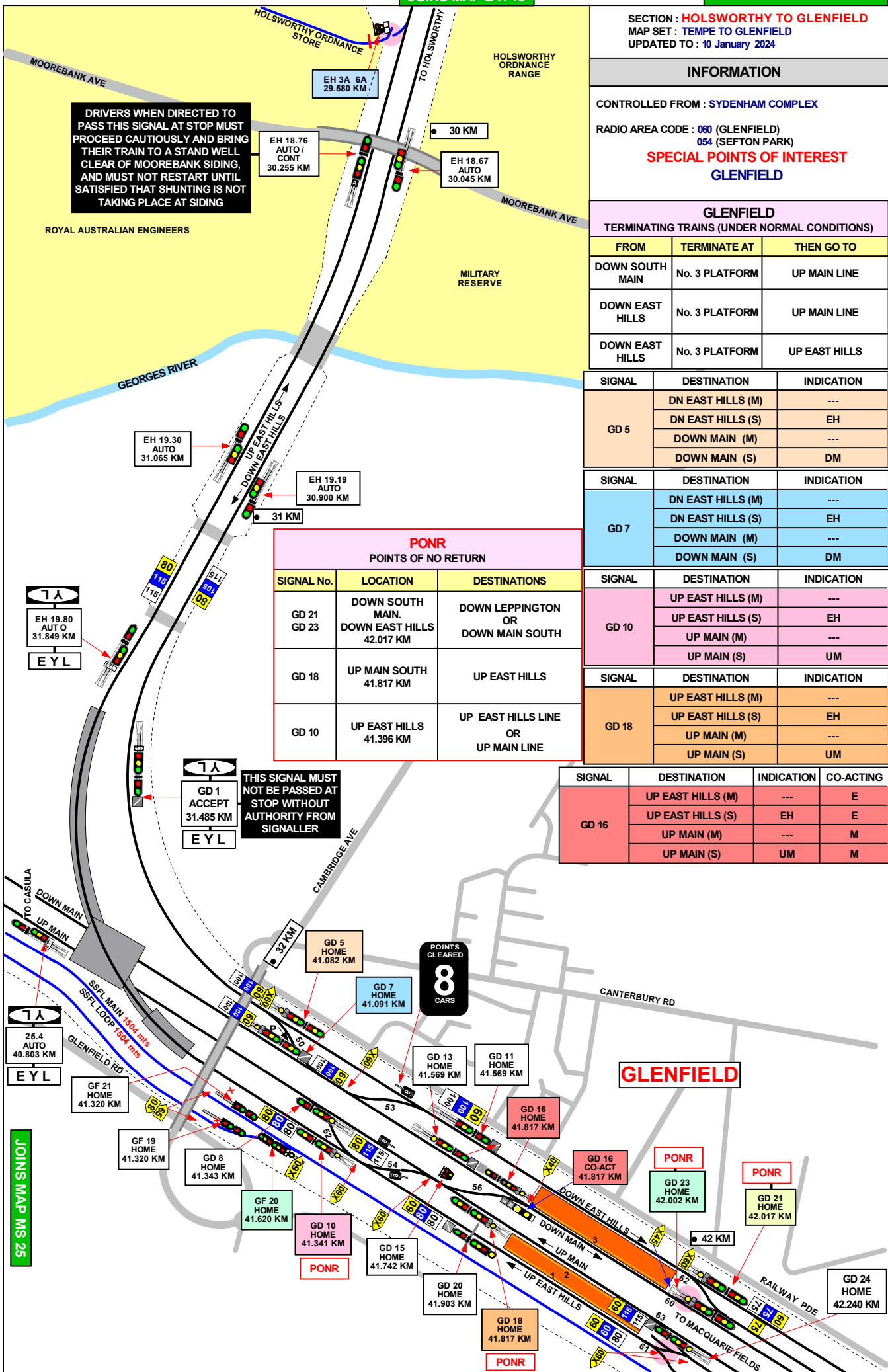
**DRIVERS WHEN DIRECTED TO PASS THIS SIGNAL AT STOP MUST PROCEED CAUTIOUSLY AND BRING THEIR TRAIN TO A STAND WELL CLEAR OF MOOREBANK SIDING, AND MUST NOT RESTART UNTIL SATISFIED THAT SHUNTING IS NOT TAKING PLACE AT SIDING**

ROYAL AUSTRALIAN ENGINEERS

PONR POINTS OF NO RETURN		
SIGNAL No.	LOCATION	DESTINATIONS
GD 21 GD 23	DOWN SOUTH MAIN. DOWN EAST HILLS 42.017 KM	DOWN LEPPINGTON OR DOWN MAIN SOUTH
GD 18	UP MAIN SOUTH 41.817 KM	UP EAST HILLS
GD 10	UP EAST HILLS 41.396 KM	UP EAST HILLS LINE OR UP MAIN LINE

POINTS CLEARED  
**8**  
 CARS

**THIS SIGNAL MUST NOT BE PASSED AT STOP WITHOUT AUTHORITY FROM SIGNALLER**



JOINS MAP MS 25

JOINS MAP MS 26