

# DRIVERS ROUTE KNOWLEDGE DIAGRAMS

## BANKSTOWN LINE

SYDENHAM  
MARRICKVILLE  
DULWICH HILL  
HURLSTONE PARK  
CANTERBURY  
CAMPSIE  
BELMORE  
LAKEMBA  
WILEY PARK  
PUNCHBOWL  
BANKSTOWN  
YAGOONA  
BIRRONG

**Effective Date:** August 2020

**Version:** 4.28

### Explanatory Notes:

Navigate to your area of interest via the station index or by using links created in Adobe bookmarks.

This document is approved for **route knowledge only**.

**Do not use these diagrams for any safety related purpose** without validating the information against a controlled source or in the field.

Information in these diagrams is uncontrolled.

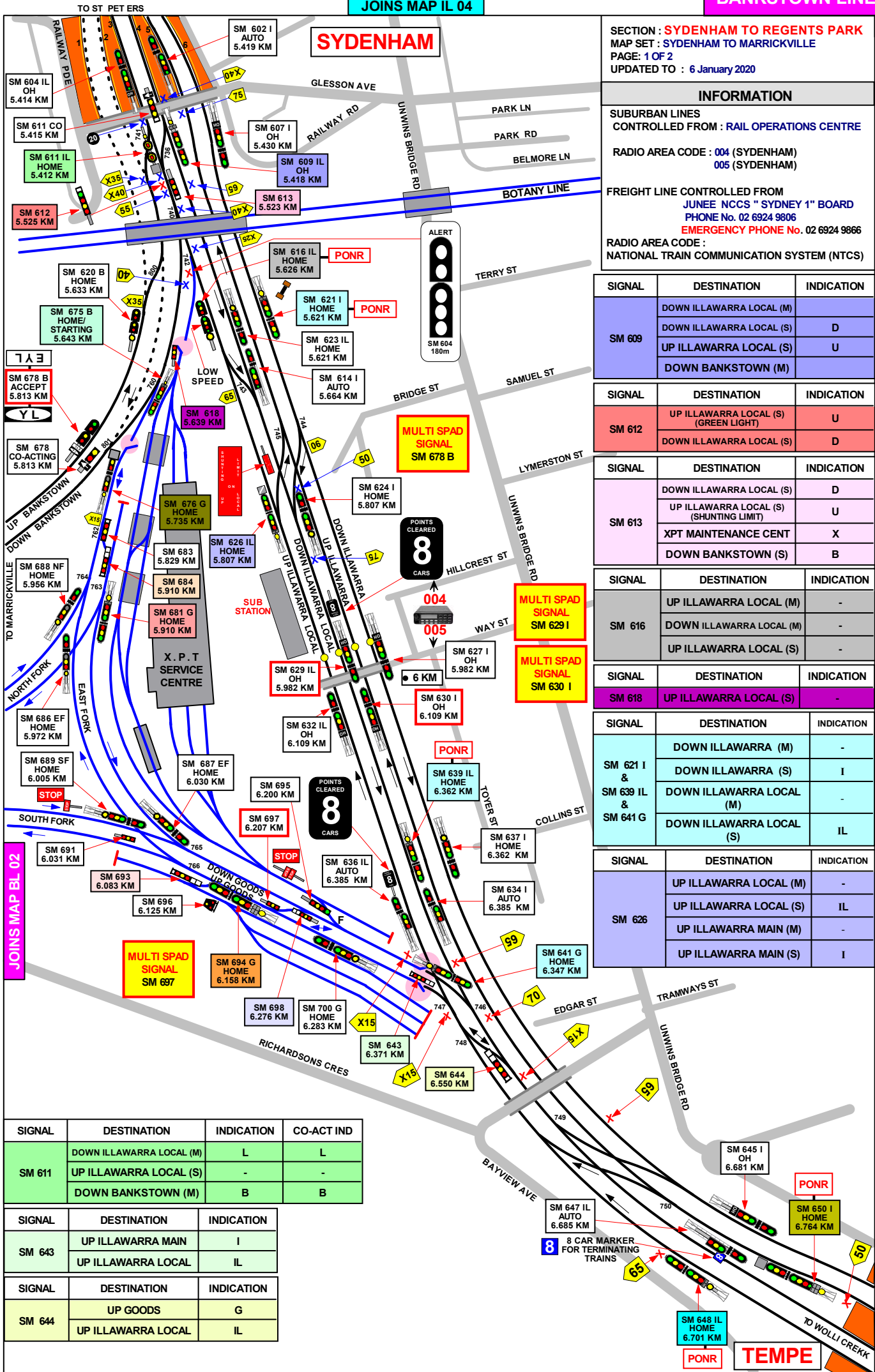
Please report any updates to  
[gis.support@transport.nsw.gov.au](mailto:gis.support@transport.nsw.gov.au)



**Copyright:** Sydney Trains

**Ownership:** Geospatial Services,  
Asset Information Systems & Services

**Location:** TRIM Record No.D2015/586



**SECTION : SYDENHAM TO REGENTS PARK**  
**MAP SET : SYDENHAM TO MARRICKVILLE**  
 PAGE: 1 OF 2  
 UPDATED TO : 6 January 2020

**INFORMATION**

SUBURBAN LINES  
 CONTROLLED FROM : RAIL OPERATIONS CENTRE

RADIO AREA CODE : 004 (SYDENHAM)  
 005 (SYDENHAM)

FREIGHT LINE CONTROLLED FROM  
 JUNEE NCCS " SYDNEY 1" BOARD  
 PHONE No. 02 6924 9806  
**EMERGENCY PHONE No. 02 6924 9866**

RADIO AREA CODE :  
 NATIONAL TRAIN COMMUNICATION SYSTEM (NTCS)

SIGNAL	DESTINATION	INDICATION
SM 609	DOWN ILLAWARRA LOCAL (M)	
	DOWN ILLAWARRA LOCAL (S)	D
	UP ILLAWARRA LOCAL (S)	U
	DOWN BANKSTOWN (M)	

SIGNAL	DESTINATION	INDICATION
SM 612	UP ILLAWARRA LOCAL (S) (GREEN LIGHT)	U
	DOWN ILLAWARRA LOCAL (S)	D

SIGNAL	DESTINATION	INDICATION
SM 613	DOWN ILLAWARRA LOCAL (S)	D
	UP ILLAWARRA LOCAL (S) (SHUNTING LIMIT)	U
	XPT MAINTENANCE CENT	X
	DOWN BANKSTOWN (S)	B

SIGNAL	DESTINATION	INDICATION
SM 616	UP ILLAWARRA LOCAL (M)	-
	DOWN ILLAWARRA LOCAL (M)	-
	UP ILLAWARRA LOCAL (S)	-

SIGNAL	DESTINATION	INDICATION
SM 618	UP ILLAWARRA LOCAL (S)	-

SIGNAL	DESTINATION	INDICATION
SM 621 I & SM 639 IL & SM 641 G	DOWN ILLAWARRA (M)	-
	DOWN ILLAWARRA (S)	I
	DOWN ILLAWARRA LOCAL (M)	-
	DOWN ILLAWARRA LOCAL (S)	IL

SIGNAL	DESTINATION	INDICATION
SM 626	UP ILLAWARRA LOCAL (M)	-
	UP ILLAWARRA LOCAL (S)	IL
	UP ILLAWARRA MAIN (M)	-
	UP ILLAWARRA MAIN (S)	I

SIGNAL	DESTINATION	INDICATION	CO-ACT IND
SM 611	DOWN ILLAWARRA LOCAL (M)	L	L
	UP ILLAWARRA LOCAL (S)	-	-
	DOWN BANKSTOWN (M)	B	B

SIGNAL	DESTINATION	INDICATION
SM 643	UP ILLAWARRA MAIN	I
	UP ILLAWARRA LOCAL	IL

SIGNAL	DESTINATION	INDICATION
SM 644	UP GOODS	G
	UP ILLAWARRA LOCAL	IL

GRADIENT

1 IN 440

1 IN 220

1 IN 367

LEVEL

1 IN 367

1 IN 286

1 IN 500

JOINS MAP BL 02

**SECTION : SYDENHAM TO MARRICKVILLE  
SYDENHAM TO TEMPE**  
MAP SET : SYDENHAM TO REGENTS PARK  
PAGE : 2 OF 2  
UPDATED TO : 6 January 2020

SUBURBAN LINES  
CONTROLLED FROM : RAIL OPERATIONS  
CENTRE  
RADIO AREA CODE : 004 (SYDENHAM)  
005 (SYDENHAM)

FREIGHT LINE CONTROLLED FROM  
JUNEE NCCS " SYDNEY 1" BOARD  
PHONE No. 02 6924 9806  
EMERGENCY PHONE No. 02 6924 9866  
RADIO AREA CODE :  
NATIONAL TRAIN COMMUNICATION SYSTEM (NTCS)

PROPELLING MOVEMENTS	
FROM	TO
CLEAR OF No. 775 CROSSOVER	CLEAR OF No. 770 CROSSOVER
CLEAR OF No. 770 CROSSOVER	CLEAR OF No. 775 CROSSOVER

THESE PROPELLING MOVEMENTS ARE FOR NON-ELECTRIC ROLLING STOCK ONLY AND MUST BE CARRIED OUT AS SHOWN IN THE INSTRUCTIONS IN NTR 424/ OSP 15 IN THE NETWORK RULES AND OPERATORS SPECIFIC PROCEDURES MANUALS

PONR POINT OF NO RETURN		
SIGNAL No.	LOCATION	DESTINATION
SM 621 I	APPROX. 250 METRES COUNTRY SIDE OF No. 6 PLATFORM SYDENHAM ( DOWN ILLAWARRA )	EAST HILLS LINE
SM 611 B	COUNTRY END OF No. 2 PLATFORM SYDENHAM	ILLAWARRA LINES
SM 639 IL	APPROX. 1 KILOMETRE COUNTRY SIDE OF No. 4 PLATFORM SYDENHAM ( DOWN ILLAWARRA LOCAL )	WOLLI CREEK STATION
SM 616 IL	UP ILLAWARRA LOCAL LINE AT 5.626 KM	TERMINATE AT SYDENHAM
SM 675 B	DOWN BANKSTOWN LINE AT 5.643 KM	GOODS LINE
SM 648 IL	SYDNEY END OF No. 1 PLATFORM TEMPE	GOODS LINE
SM 650 I	SYDNEY END OF No. 3 PLATFORM TEMPE	GOODS LINE

SIGNAL	DESTINATION	INDICATION
SM 648 IL	UP GOODS (M)	-
	UP GOODS (S)	G
	UP ILLAWARRA LOCAL (M)	-
	UP ILLAWARRA LOCAL (S)	IL

SIGNAL	DESTINATION	INDICATION
SM 650 I	UP GOODS (M)	G
	UP GOODS (S)	G
	UP ILLAWARRA LOCAL (M)	IL
	UP ILLAWARRA LOCAL (S)	IL
	UP ILLAWARRA (M)	-
	UP ILLAWARRA (S)	I

SIGNAL	DESTINATION	INDICATION
SM 675 B	DOWN GOODS (M)	-
	DOWN GOODS (S)	G
	DOWN BANKSTOWN (M)	-
	DOWN BANKSTOWN (S)	B

SIGNAL	DESTINATION	INDICATION
SM 676	UP ILLAWARRA LOCAL (S)	-
	UP ILLAWARRA LOCAL (M)	U
	DOWN ILLAWARRA LOCAL (M)	D

SIGNAL	DESTINATION	INDICATION
SM 681 G	DOWN EAST FORK (M)	-
	DOWN EAST FORK (S)	EF
	DOWN NORTH FORK (M)	-
	DOWN NORTH FORK (S)	NF

SIGNAL	DESTINATION	INDICATION
SM 684	GOODS LINE	G
	NORTH SHUNTING NECK	N

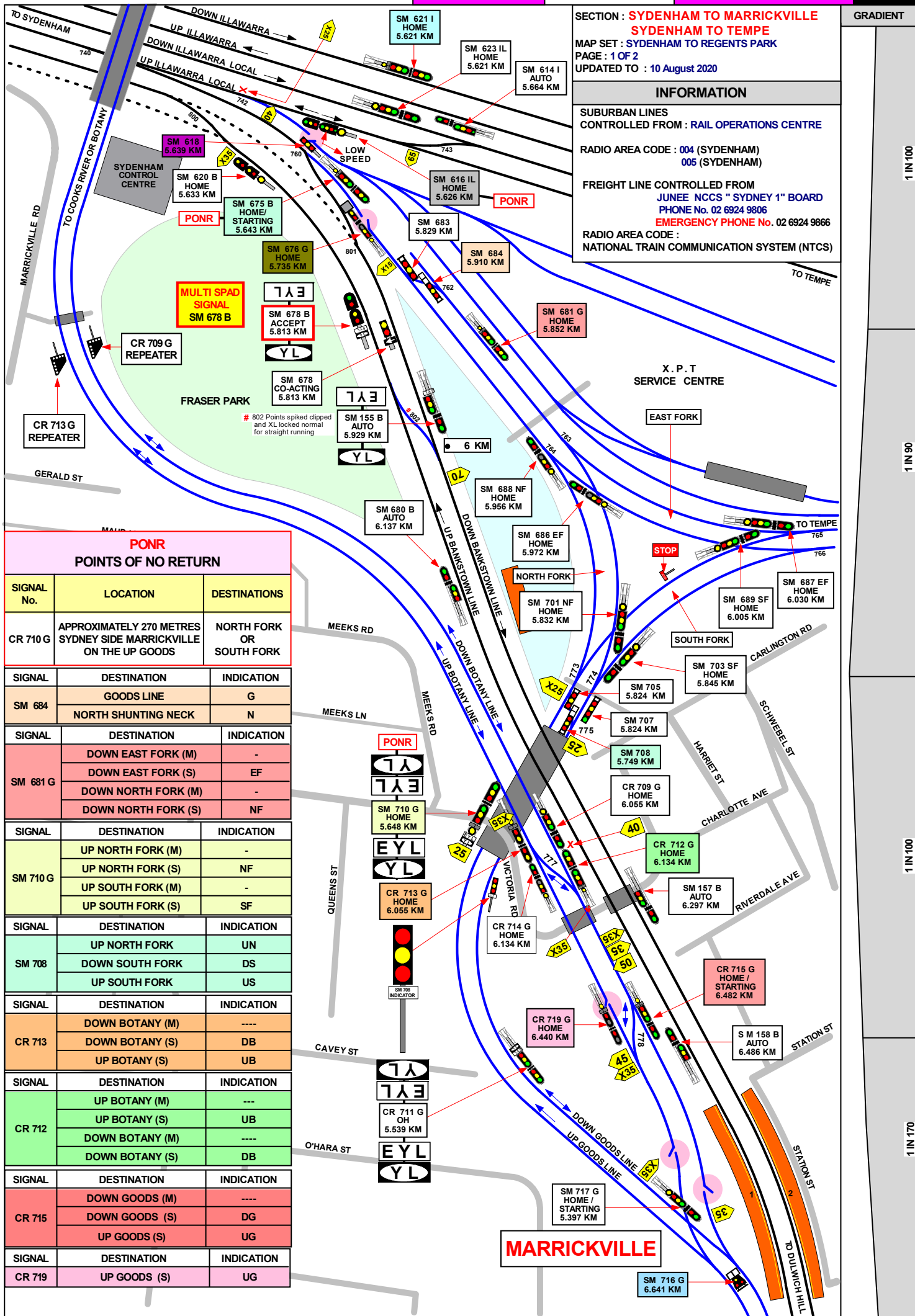
SIGNAL	DESTINATION	INDICATION
SM 693	UP GOODS	UG
	SIDING	S

SIGNAL	DESTINATION	INDICATION
SM 694 G	UP SHUNTING NECK (S)	SN
	UP SOUTH FORK (M)	-
	UP SOUTH FORK (S)	SF
	UP EAST FORK (M)	-
	UP EAST FORK (S)	EF

SYDENHAM TERMINATING TRAINS (UNDER NORMAL CONDITIONS)		
FROM	TERMINATE AT	THEN GO TO
UP ILLAWARRA LINE	No.3 PLATFORM	RETURN TO EITHER THE DOWN BANKSTOWN LINE, THE DOWN ILLAWARRA LOCAL LINE, THE XPT SIDINGS OR THE GOODS LINES.
	No.4 PLATFORM	RETURN TO EITHER THE DOWN BANKSTOWN LINE, THE DOWN ILLAWARRA LOCAL LINE, THE XPT SIDINGS OR THE GOODS LINES.
DOWN TRAINS	MUST NOT TERMINATE AT THIS LOCATION AS THERE ARE NO SIGNALS PROVIDED FOR THE MOVEMENT.	
DOWN TRAINS AT TEMPE	DOWN ILLAWARRA TRAINS MAY TERMINATE BEHIND SIGNAL SM 644 AND RETURN TO THE UP ILLAWARRA LOCAL LINE.	
UP ILLAWARRA LOCAL LINE	UP GOODS LINE AT SIGNAL No. SM 700	RETURN TO THE DOWN ILLAWARRA LOCAL LINE OR THE DOWN ILLAWARRA LINE VIA No. 748 POINTS.
	UP SOUTH FORK	RETURN TO THE DOWN GOODS LINE VIA No. 770 POINTS.

SELF-PROPELLED DIESEL TRAINS MAY TERMINATE ON		
FROM	TERMINATE AT	THEN GO TO
	DOWN EAST FORK	RETURN TO THE UP NORTH FORK VIA No. 762 POINTS.
	DOWN GOODS LINE	RETURN TO THE UP SOUTH FORK VIA No. 770 POINTS.
	DOWN ILLAWARRA LOCAL LINE AT SIGNAL No. SM 644	RETURN TO EITHER THE UP NORTH FORK VIA Nos. 775 AND 773 POINTS OR THE DOWN SOUTH FORK VIA No. 775 POINTS

SIGNAL	DESTINATION	INDICATION
SM 698	UP GOODS	UG
	DOWN GOODS	DG



SECTION : SYDENHAM TO MARRICKVILLE  
 SYDENHAM TO TEMPE  
 MAP SET : SYDENHAM TO REGENTS PARK  
 PAGE : 1 OF 2  
 UPDATED TO : 10 August 2020

**INFORMATION**

SUBURBAN LINES  
 CONTROLLED FROM : RAIL OPERATIONS CENTRE  
 RADIO AREA CODE : 004 (SYDENHAM)  
 005 (SYDENHAM)  
 FREIGHT LINE CONTROLLED FROM  
 JUNEE NCCS " SYDNEY 1" BOARD  
 PHONE No. 02 6924 9806  
 EMERGENCY PHONE No. 02 6924 9866  
 RADIO AREA CODE :  
 NATIONAL TRAIN COMMUNICATION SYSTEM (NTCS)

GRADIENT

1 IN 100

1 IN 90

1 IN 100

1 IN 170

**PONR**  
 POINTS OF NO RETURN

SIGNAL No.	LOCATION	DESTINATIONS
CR 710 G	APPROXIMATELY 270 METRES SYDNEY SIDE MARRICKVILLE ON THE UP GOODS	NORTH FORK OR SOUTH FORK
SIGNAL	DESTINATION	INDICATION
SM 684	GOODS LINE	G
	NORTH SHUNTING NECK	N
SIGNAL	DESTINATION	INDICATION
SM 681 G	DOWN EAST FORK (M)	-
	DOWN EAST FORK (S)	EF
	DOWN NORTH FORK (M)	-
	DOWN NORTH FORK (S)	NF
SIGNAL	DESTINATION	INDICATION
SM 710 G	UP NORTH FORK (M)	-
	UP NORTH FORK (S)	NF
	UP SOUTH FORK (M)	-
	UP SOUTH FORK (S)	SF
SIGNAL	DESTINATION	INDICATION
SM 708	UP NORTH FORK	UN
	DOWN SOUTH FORK	DS
	UP SOUTH FORK	US
SIGNAL	DESTINATION	INDICATION
CR 713	DOWN BOTANY (M)	----
	DOWN BOTANY (S)	DB
	UP BOTANY (S)	UB
SIGNAL	DESTINATION	INDICATION
CR 712	UP BOTANY (M)	----
	UP BOTANY (S)	UB
	DOWN BOTANY (M)	----
CR 715	DOWN GOODS (M)	----
	DOWN GOODS (S)	DG
	UP GOODS (S)	UG
SIGNAL	DESTINATION	INDICATION
CR 719	UP GOODS (S)	UG

SIGNAL	DESTINATION	INDICATION
SM 713 G	DOWN BOTANY (M)	-
	DOWN BOTANY (S)	DB
	UP BOTANY (S)	UB

SIGNAL	DESTINATION	INDICATION
SM 716 G	DOWN GOODS (S)	DG
	DOWN BOTANY (S)	DB

SIGNAL	DESTINATION	INDICATION
SM 719 G	UP GOODS (S)	UG

SIGNAL	DESTINATION	INDICATION
SM 712 G	UP BOTANY (M)	-
	UP BOTANY (S)	UB
	DOWN BOTANY (M)	-
	DOWN BOTANY (S)	DB

SIGNAL	DESTINATION	INDICATION
SM 715 G	DOWN GOODS (M)	-
	DOWN GOODS (S)	DG
	UP GOODS (S)	UG

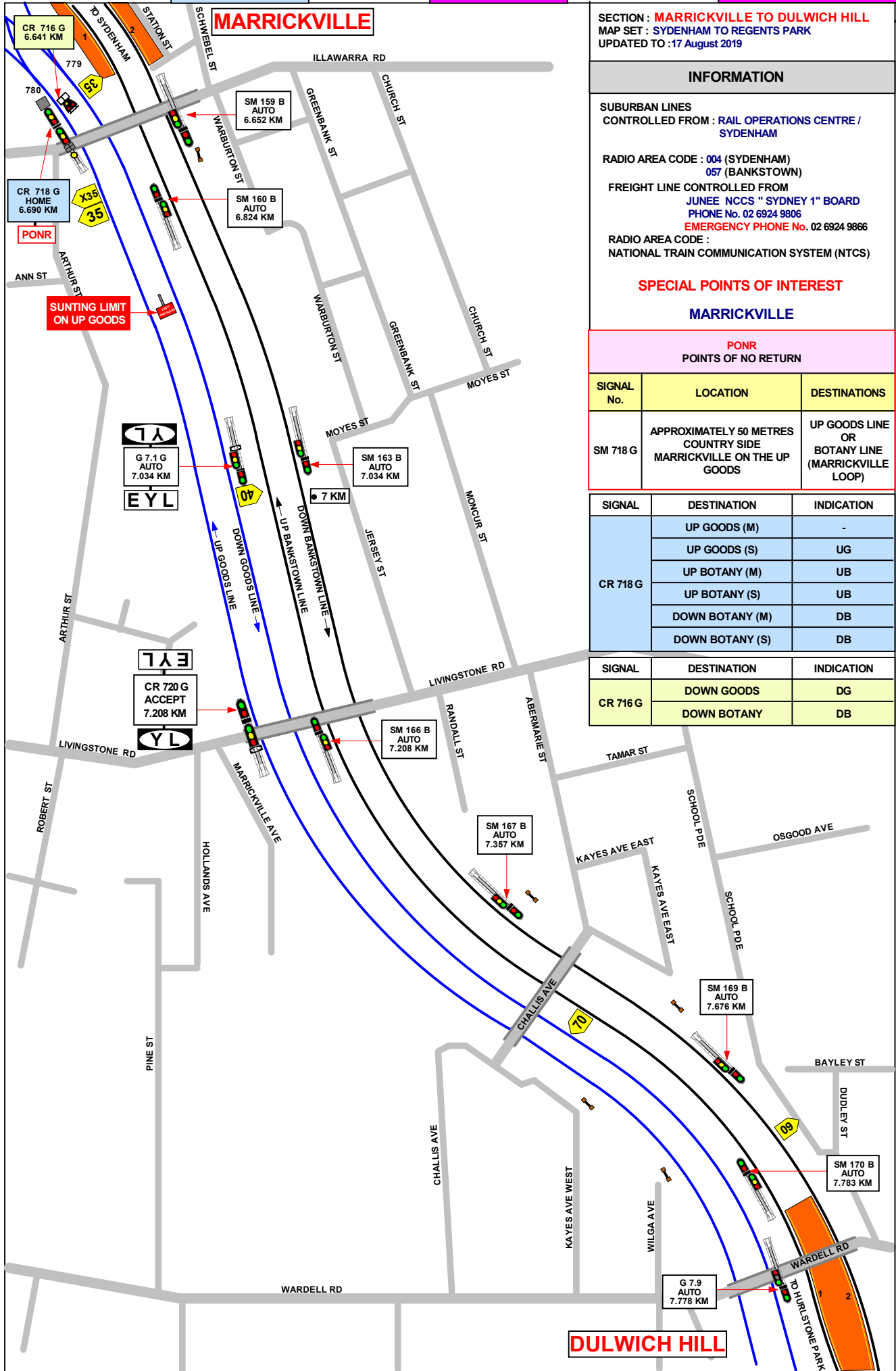
SECTION : **SYDENHAM TO MARRICKVILLE**  
**SYDENHAM TO TEMPE**  
MAP SET : SYDENHAM TO REGENTS PARK  
PAGE : 2 OF 2  
UPDATED TO : 6 January 2020

SUBURBAN LINES  
CONTROLLED FROM : RAIL OPERATIONS CENTRE

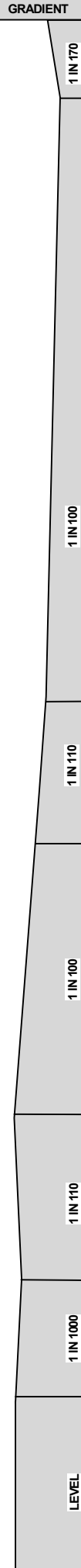
RADIO AREA CODE : 004 (SYDENHAM)  
057 (SYDENHAM)

FREIGHT LINE CONTROLLED FROM  
JUNEE NCCS " SYDNEY 1" BOARD  
PHONE No. 02 6924 9806  
**EMERGENCY PHONE No. 02 6924 9866**

RADIO AREA CODE :  
NATIONAL TRAIN COMMUNICATION SYSTEM (NTCS)



**SECTION : MARRICKVILLE TO DULWICH HILL**  
**MAP SET : SYDENHAM TO REGENTS PARK**  
 UPDATED TO : 17 August 2019



**INFORMATION**

**SUBURBAN LINES**  
 CONTROLLED FROM : RAIL OPERATIONS CENTRE / SYDENHAM

RADIO AREA CODE : 004 (SYDENHAM)  
 057 (BANKSTOWN)

FREIGHT LINE CONTROLLED FROM  
 JUNEE NCCS " SYDNEY 1" BOARD  
 PHONE No. 02 6924 9806  
 EMERGENCY PHONE No. 02 6924 9866

RADIO AREA CODE :  
 NATIONAL TRAIN COMMUNICATION SYSTEM (NTCS)

**SPECIAL POINTS OF INTEREST**

**MARRICKVILLE**

**PONR**  
 POINTS OF NO RETURN

SIGNAL No.	LOCATION	DESTINATIONS
SM 718 G	APPROXIMATELY 50 METRES COUNTRY SIDE MARRICKVILLE ON THE UP GOODS	UP GOODS LINE OR BOTANY LINE (MARRICKVILLE LOOP)

SIGNAL	DESTINATION	INDICATION
CR 718 G	UP GOODS (M)	-
	UP GOODS (S)	UG
	UP BOTANY (M)	UB
	UP BOTANY (S)	UB
	DOWN BOTANY (M)	DB
CR 716 G	DOWN GOODS	DG
	DOWN BOTANY	DB

SECTION : HURLSTONE PARK TO DULWICH HILL  
MAP SET : SYDENHAM TO REGENTS PARK  
UPDATED TO : 21 JULY 2015

GRADIENT

INFORMATION

SUBURBAN LINES  
CONTROLLED FROM : SYDENHAM

RADIO AREA CODE : 057 (SYDENHAM)

FREIGHT LINE CONTROLLED FROM  
JUNEE NCCS " SYDNEY 1" BOARD  
PHONE No. 02 6924 9806  
EMERGENCY PHONE No. 02 6924 9866

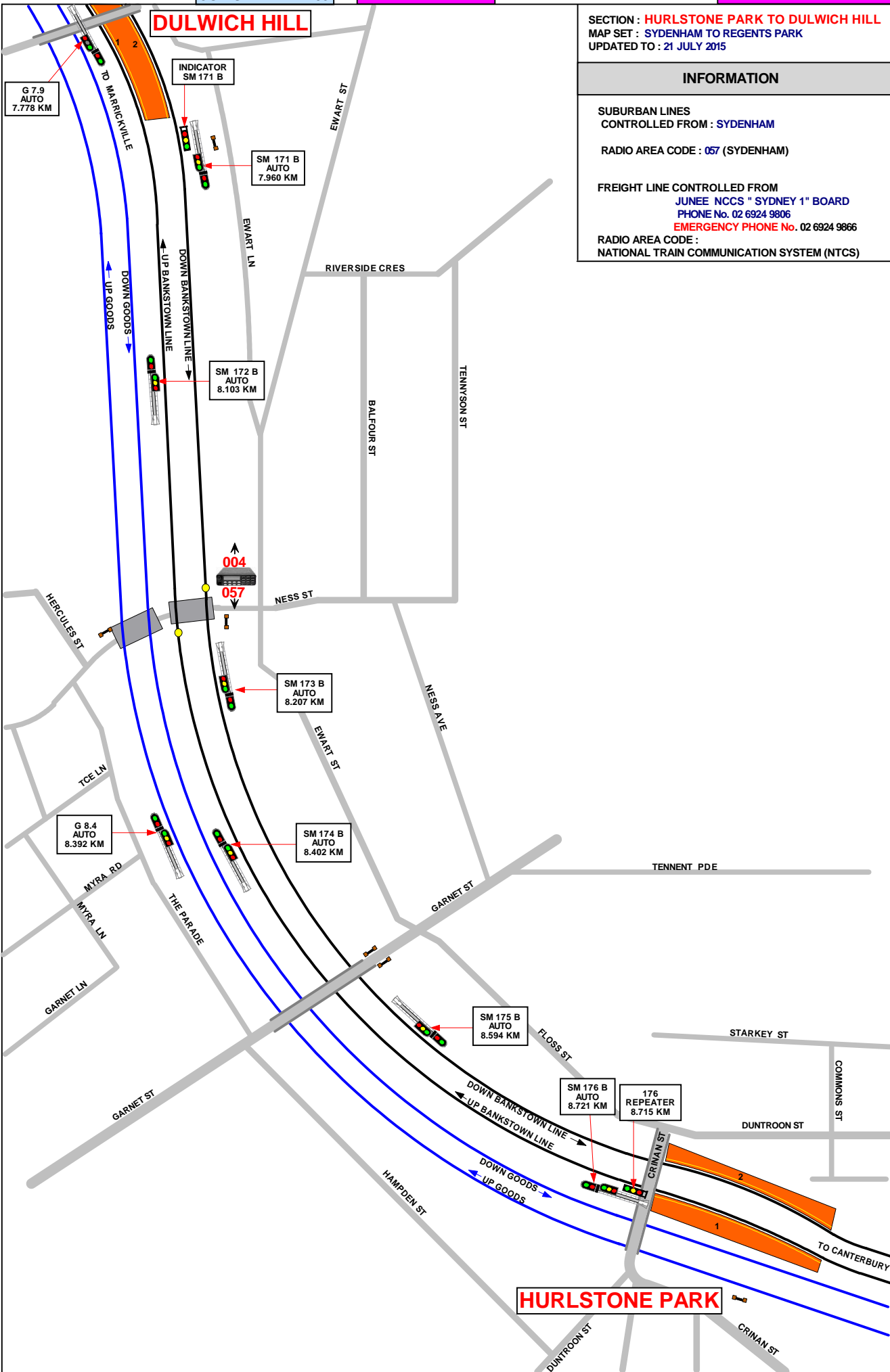
RADIO AREA CODE :  
NATIONAL TRAIN COMMUNICATION SYSTEM (NTCS)

LEVEL

1 IN 425

1 IN 440

1 IN 170



SECTION : HURLSTONE PARK TO CANTERBURY  
MAP SET : SYDENHAM TO REGENTS PARK  
UPDATED TO : 21 JULY 2015

INFORMATION

SUBURBAN LINES  
CONTROLLED FROM : SYDENHAM  
RADIO AREA CODE : 057 (SYDENHAM)  
FREIGHT LINE CONTROLLED FROM  
JUNEE NCSS " SYDNEY 1" BOARD  
PHONE No. 02 6924 9806  
EMERGENCY PHONE No. 02 6924 9866  
RADIO AREA CODE :  
NATIONAL TRAIN COMMUNICATION SYSTEM (NTCS)

GRADIENT

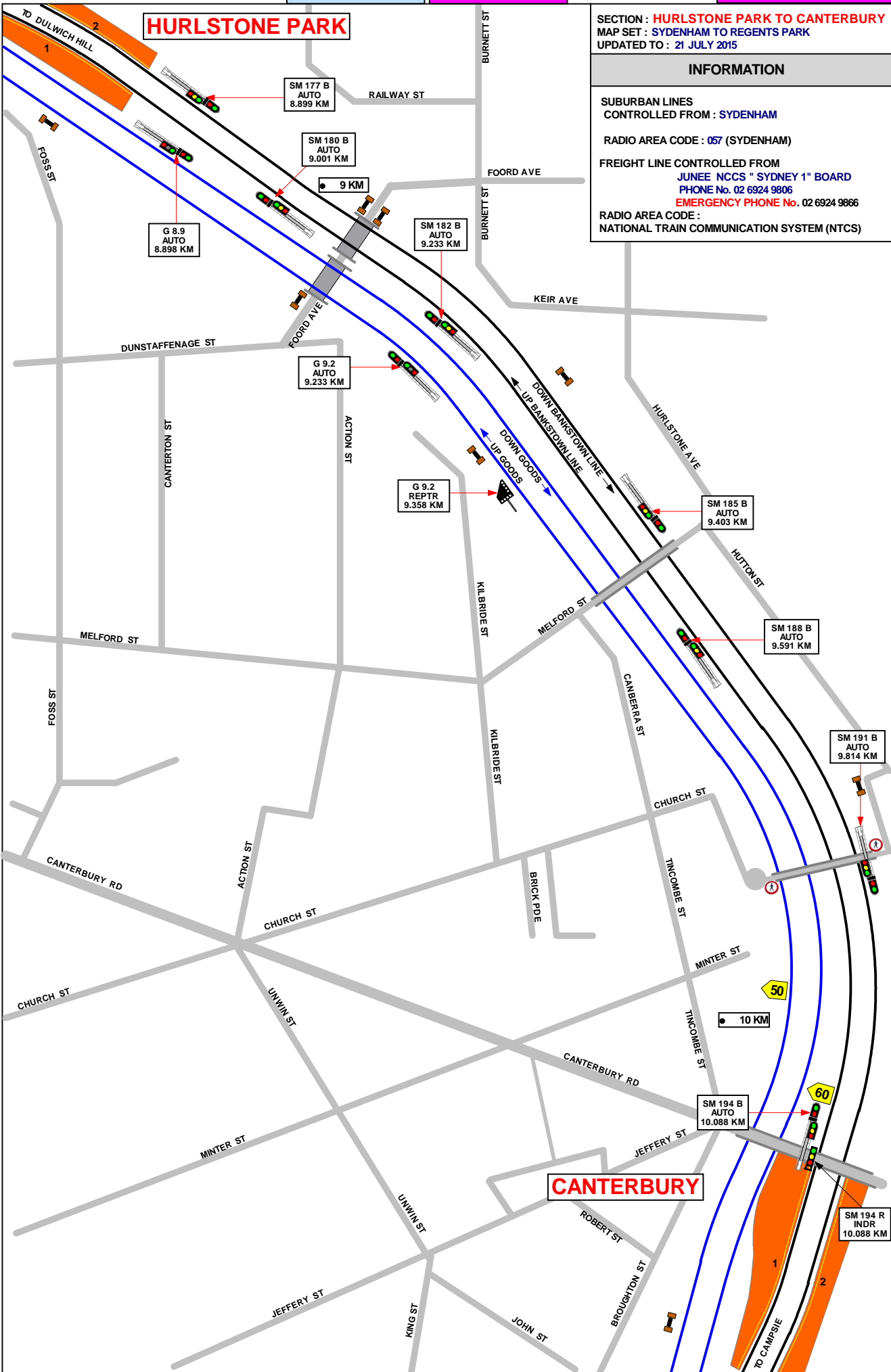
1 IN 170

1 IN 160

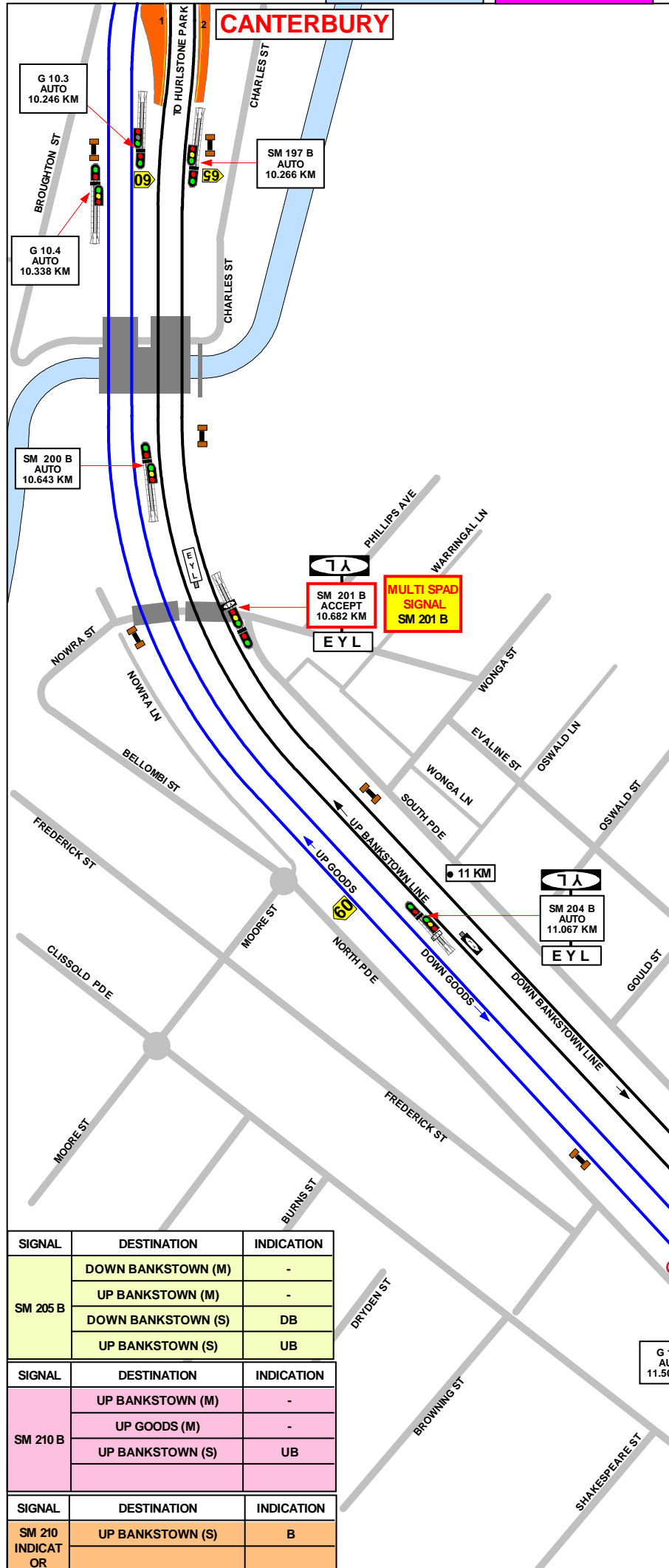
1 IN 132

1 IN 100

LEVEL







SECTION : **CANTERBURY TO CAMPSIE**  
 MAP SET : SYDENHAM TO REGENTS PARK  
 AMENDED TO : 10 NOVEMBER 2015

GRADIENT	LEVEL
1 IN 264	
1 IN 100	
1 IN 132	
1 IN 165	
1 IN 400	

**INFORMATION**

SUBURBAN LINES  
 CONTROLLED FROM : SYDENHAM

RADIO AREA CODE : 057 (SYDENHAM)

FREIGHT LINE CONTROLLED FROM  
 JUNEE NCCS " SYDNEY 1" BOARD  
 PHONE No. 02 6924 9806  
 EMERGENCY PHONE No. 02 6924 9866

RADIO AREA CODE :  
 NATIONAL TRAIN COMMUNICATION SYSTEM (NTCS)

**CAMPSIE**  
 TERMINATING TRAINS (UNDER NORMAL CONDITIONS)

FROM	TERMINATE AT	THEN GO TO
DOWN TRAINS	No. 1 PLATFORM	UP BANKSTOWN LINE
UP TRAINS	No. 1 PLATFORM	DOWN BANKSTOWN LINE

**PONR**  
 POINTS OF NO RETURN

SIGNAL No.	LOCATION	DESTINATION
SM 205 B	APPROXIMATELY 360 METRES SYDNEY SIDE CAMPSIE ON THE DOWN BANKSTOWN LINE	CAMPSIE NUMBER No. 1 PLATFORM

SIGNAL	DESTINATION	INDICATION
SM 205 B	DOWN BANKSTOWN (M)	-
	UP BANKSTOWN (M)	-
	DOWN BANKSTOWN (S)	DB
	UP BANKSTOWN (S)	UB
SM 210 B	UP BANKSTOWN (M)	-
	UP GOODS (M)	-
	UP BANKSTOWN (S)	UB
SM 210 INDICATOR	UP BANKSTOWN (S)	B

SECTION : **CAMPSTO TO BELMORE**  
 MAP SET : SYDENHAM TO REGENTS PARK  
 AMENDED TO : 14 June 2019

GRADIENT

**INFORMATION**

SUBURBAN LINES  
 CONTROLLED FROM : SYDENHAM

RADIO AREA CODE : 057 (SYDENHAM)

FREIGHT LINE CONTROLLED FROM  
 JUNE NCCS "SYDNEY 1" BOARD  
 PHONE No. 02 6924 9806  
 EMERGENCY PHONE No. 02 6924 9866

RADIO AREA CODE :  
 NATIONAL TRAIN COMMUNICATION SYSTEM (NTCS)

**SPECIAL POINTS OF INTEREST  
 CAMPSTO**

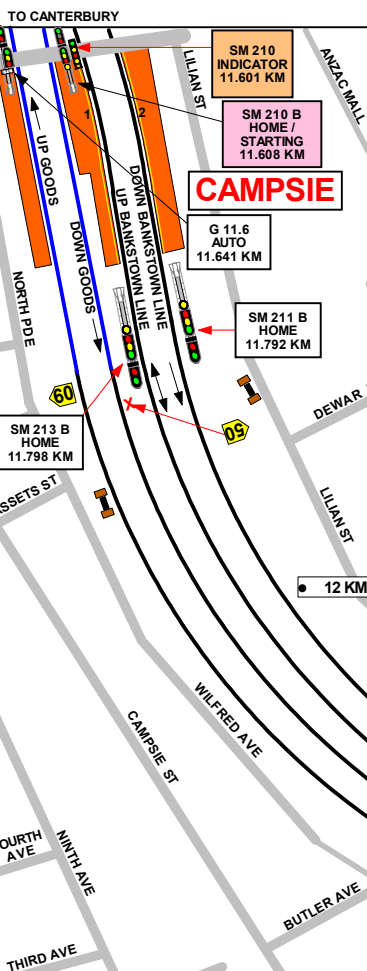
**PONR**

POINTS OF NO RETURN

SIGNAL No.	LOCATION	DESTINATIONS
SM 217 B	APPROXIMATELY 320 METRES COUNTRY SIDE OF CAMPSTO ON THE UP BANKSTOWN LINE	DOWN BANKSTOWN LINE
SM 205 B	APPROXIMATELY 360 METRES SYDNEY SIDE CAMPSTO ON THE DOWN BANKSTOWN LINE	CAMPSTO PLATFORM No. 1

SIGNAL	DESTINATION	INDICATION
SM 210 B	UP BANKSTOWN (M)	---
SM 210 B	UP BANKSTOWN (S)	---

SIGNAL	DESTINATION	INDICATION
SM 217 B	DOWN BANKSTOWN (M)	---
SM 217 B	DOWN BANKSTOWN (S)	DB



**MULTI SPAD SIGNAL  
 SM 217 B**

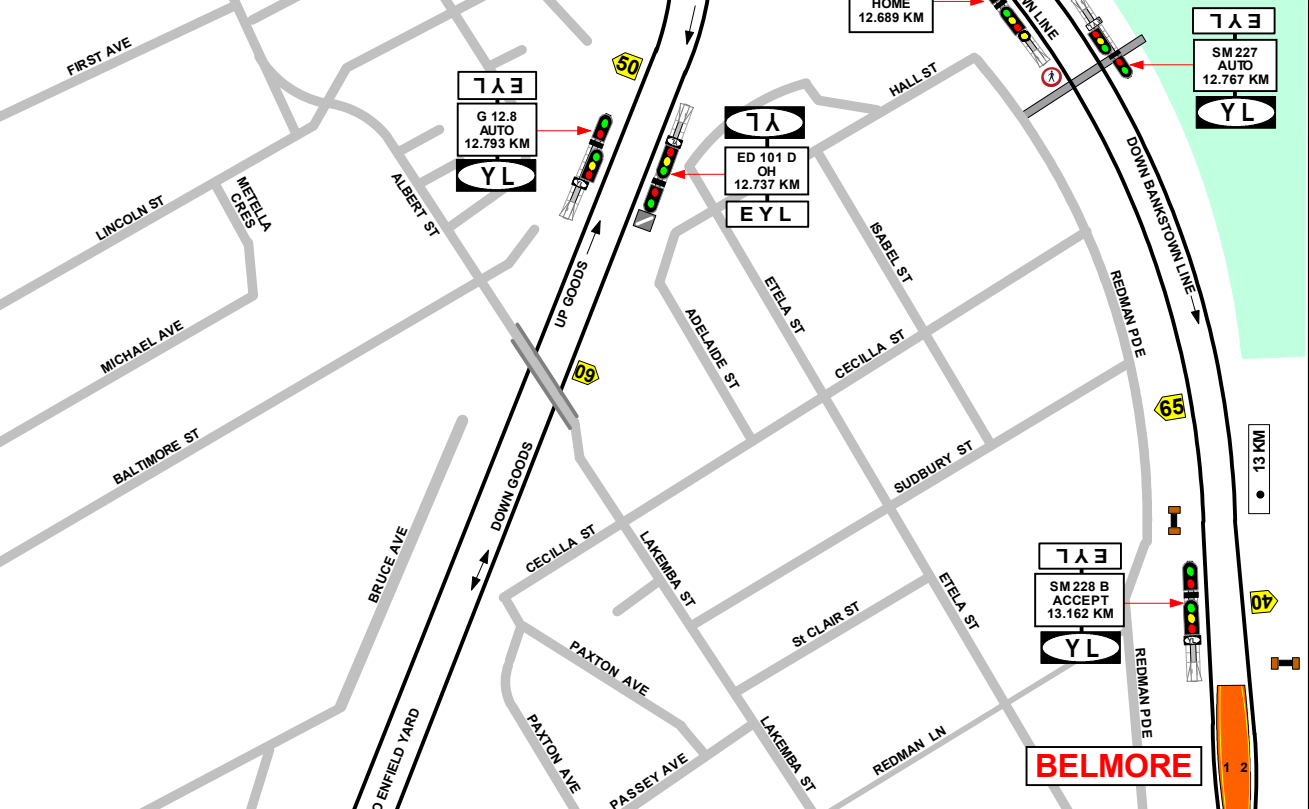
**PONR**  
 SM 217 B HOME / STARTING  
 12.116 KM  
 SEE PLATE "F"

**THIS SIGNAL MUST NOT BE PASSED AT STOP WITHOUT AUTHORITY FROM SIGNALLER**

SM 219 B HOME / STARTING  
 12.300 KM

SM 216 B HOME  
 12.235 KM

CAMPSTO TERMINATING TRAINS (UNDER NORMAL CONDITIONS)		
FROM	TERMINATE AT	THEN GO TO
DOWN TRAINS	No.1 PLATFORM	UP BANKSTOWN LINE
UP TRAINS	No. 1 PLATFORM	DOWN BANKSTOWN LINE



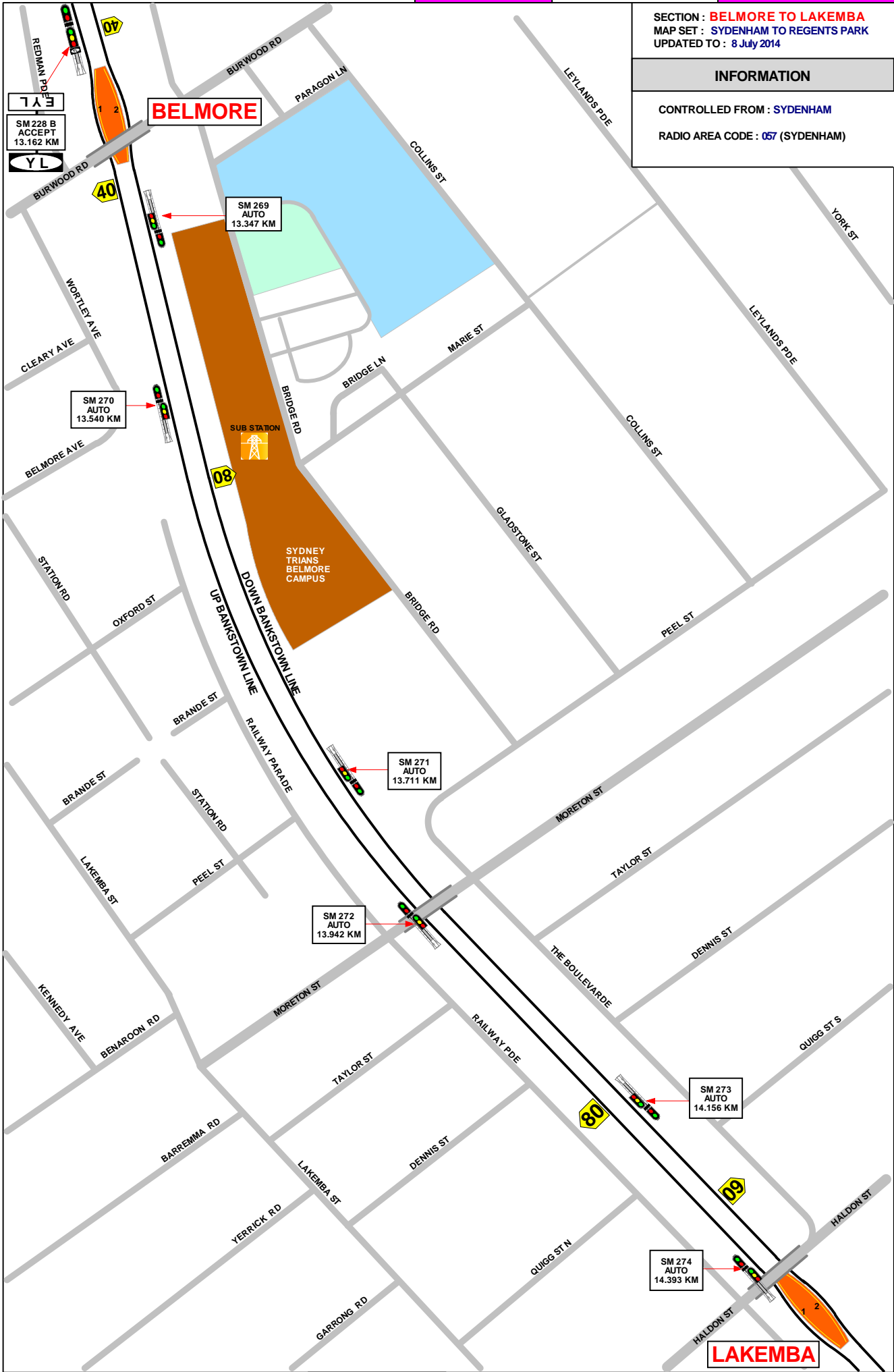
1 IN 400  
 1 IN 150  
 1 IN 200  
 1 IN 100  
 1 IN 184  
 1 IN 200  
 1 IN 384  
 1 IN 400

SECTION : **BELMORE TO LAKEMBA**  
MAP SET : SYDENHAM TO REGENTS PARK  
UPDATED TO : 8 July 2014

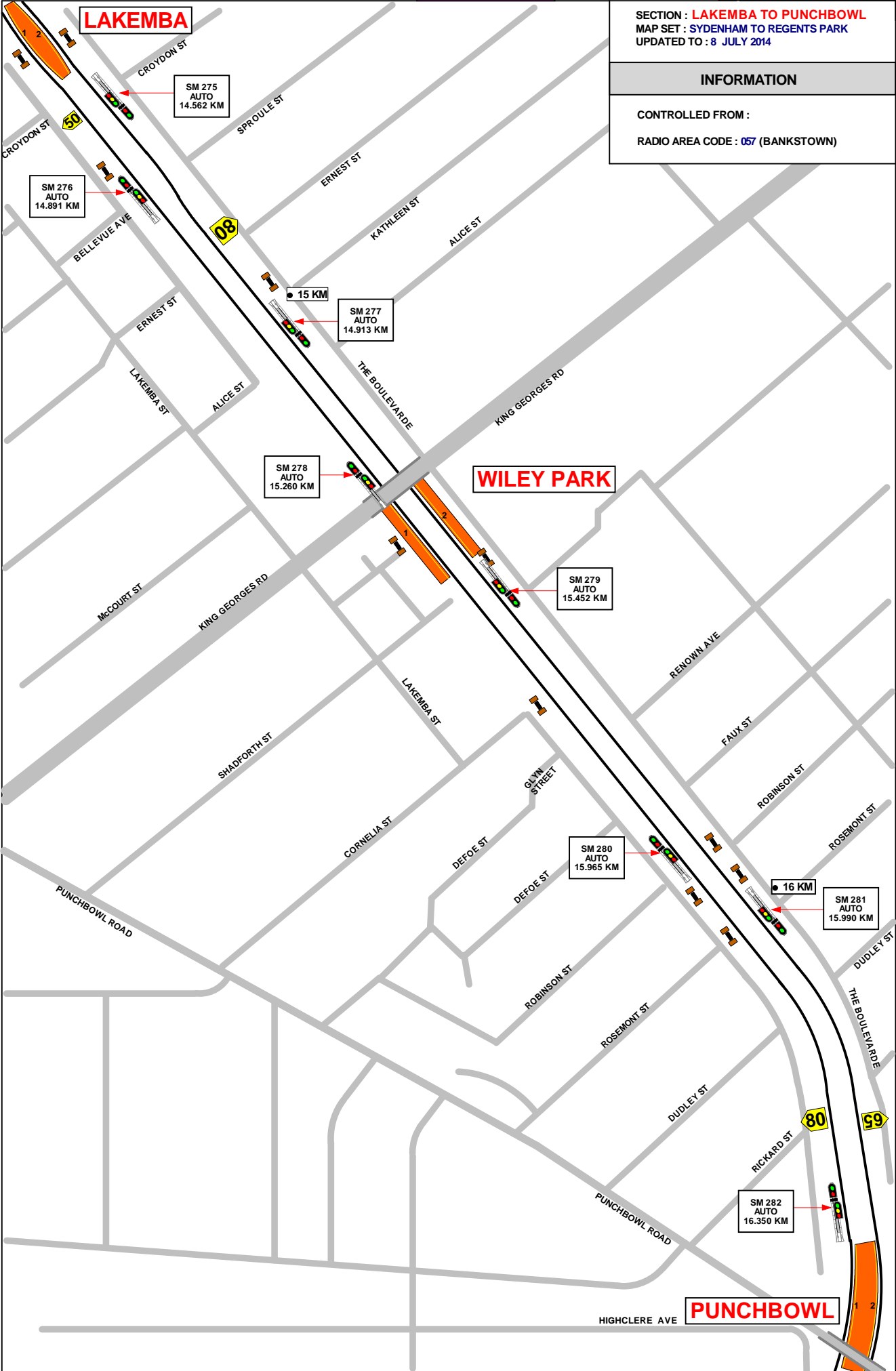
**INFORMATION**

CONTROLLED FROM : SYDENHAM  
RADIO AREA CODE : 057 (SYDENHAM)

GRADIENT	
1 IN 384	
1 IN 400	
1 IN 452	
1 IN 100	
LEVEL	
1 IN 660	



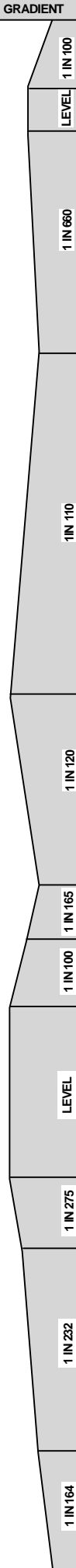
TO CAMPSIE



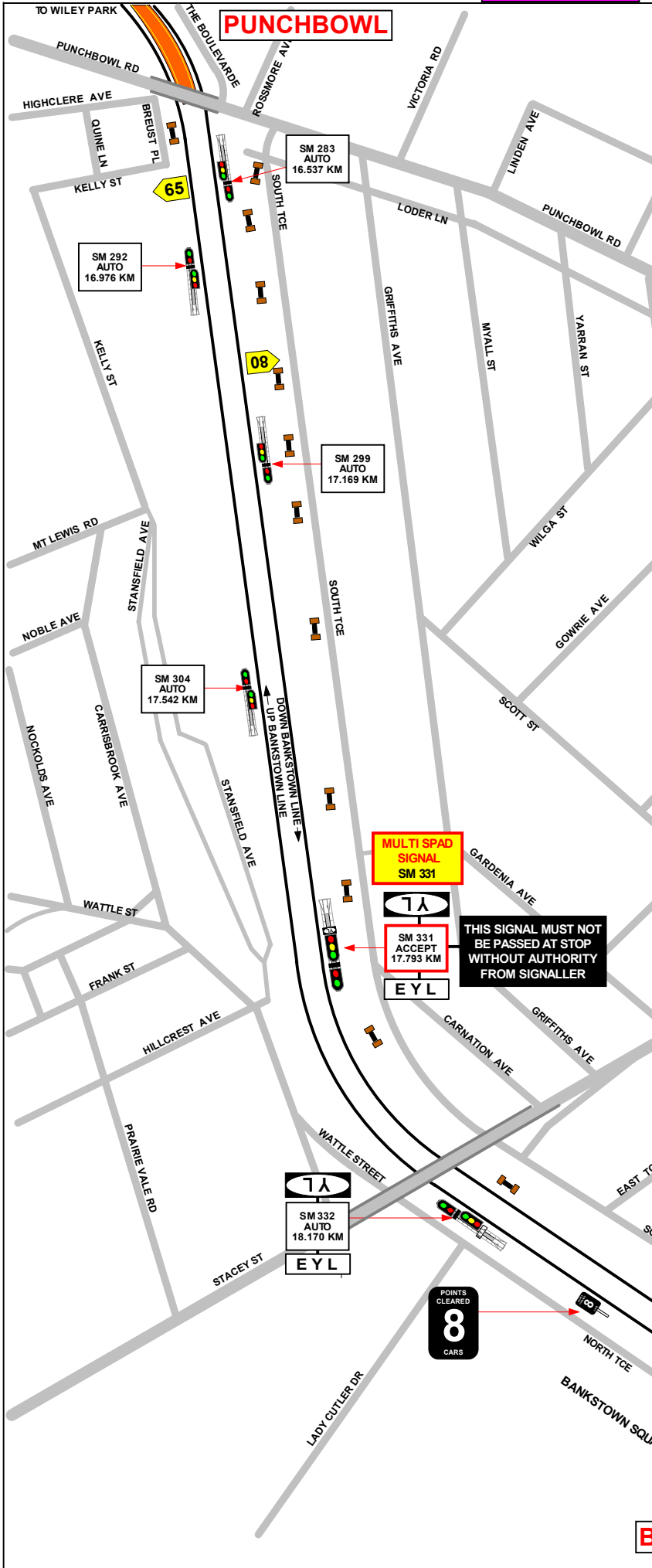
SECTION : LAKEMBA TO PUNCHBOWL  
MAP SET : SYDENHAM TO REGENTS PARK  
UPDATED TO : 8 JULY 2014

INFORMATION

CONTROLLED FROM :  
RADIO AREA CODE : 057 (BANKSTOWN)



TO BANKSTOWN



SECTION : **PUNCHBOWL TO BANKSTOWN**  
 MAP SET : SYDENHAM TO REGENTS PARK  
 UPDATED TO : 20 September 2019

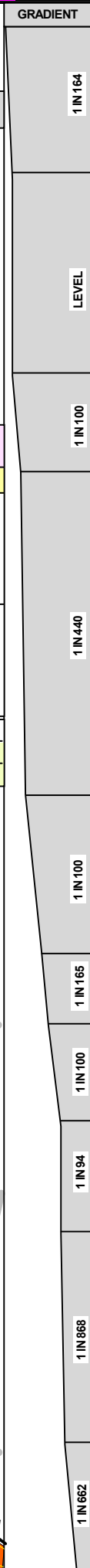
**INFORMATION**

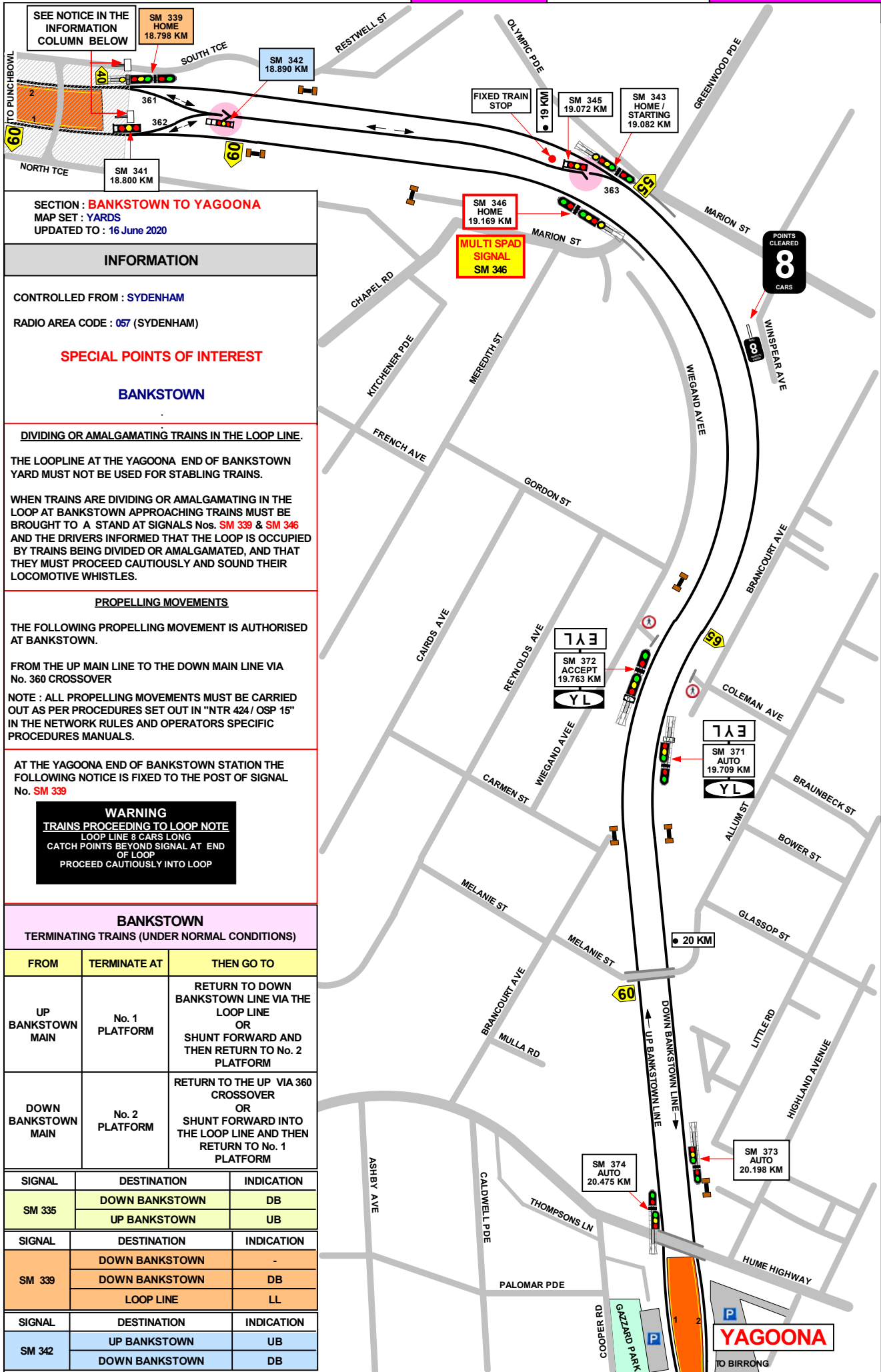
CONTROLLED FROM : SYDENHAM  
 RADIO AREA CODE : 057 (SYDENHAM)  
**SPECIAL POINTS OF INTEREST**  
**BANKSTOWN**  
PROPELLING MOVEMENTS  
 THE FOLLOWING PROPELLING MOVEMENT IS AUTHORISED AT BANKSTOWN.  
 FROM THE UP MAIN LINE TO THE DOWN MAIN LINE VIA No. 360 CROSSOVER  
 NOTE : ALL PROPELLING MOVEMENTS MUST BE CARRIED OUT AS PER PROCEDURES SET OUT IN "NTR 424 / OSP 15" IN THE NETWORK RULES AND OPERATORS SPECIFIC PROCEDURES MANUALS.

**BANKSTOWN**  
 TERMINATING TRAINS (UNDER NORMAL CONDITIONS)

FROM	TERMINATE AT	THEN GO TO
UP BANKSTOWN MAIN	No. 1 PLATFORM	RETURN TO DOWN BANKSTOWN LINE VIA THE LOOP LINE OR SHUNT FORWARD AND THEN RETURN TO No. 2 PLATFORM
DOWN BANKSTOWN MAIN	No. 2 PLATFORM	RETURN TO THE UP VIA 360 CROSSOVER OR SHUNT FORWARD INTO THE LOOP LINE AND THEN RETURN TO No. 1 PLATFORM

SIGNAL	DESTINATION	INDICATION
SM 335	DOWN BANKSTOWN	DB
	UP BANKSTOWN	UB





SEE NOTICE IN THE INFORMATION COLUMN BELOW

SM 339 HOME 18.798 KM

SM 342 18.890 KM

FIXED TRAIN STOP

SM 345 19.072 KM

SM 343 HOME / STARTING 19.082 KM

SM 341 18.800 KM

SM 346 HOME 19.169 KM

MULTI SPAD SIGNAL SM 346

POINTS CLEARED 8 CARS

SECTION : BANKSTOWN TO YAGOONA  
MAP SET : YARDS  
UPDATED TO : 16 June 2020

**INFORMATION**

CONTROLLED FROM : SYDENHAM  
RADIO AREA CODE : 057 (SYDENHAM)

**SPECIAL POINTS OF INTEREST**

**BANKSTOWN**

DIVIDING OR AMALGAMATING TRAINS IN THE LOOP LINE.

THE LOOPLINE AT THE YAGOONA END OF BANKSTOWN YARD MUST NOT BE USED FOR STABLING TRAINS.

WHEN TRAINS ARE DIVIDING OR AMALGAMATING IN THE LOOP AT BANKSTOWN APPROACHING TRAINS MUST BE BROUGHT TO A STAND AT SIGNALS Nos. SM 339 & SM 346 AND THE DRIVERS INFORMED THAT THE LOOP IS OCCUPIED BY TRAINS BEING DIVIDED OR AMALGAMATED, AND THAT THEY MUST PROCEED CAUTIOUSLY AND SOUND THEIR LOCOMOTIVE WHISTLES.

PROPELLING MOVEMENTS

THE FOLLOWING PROPELLING MOVEMENT IS AUTHORISED AT BANKSTOWN.

FROM THE UP MAIN LINE TO THE DOWN MAIN LINE VIA No. 360 CROSSOVER

NOTE : ALL PROPELLING MOVEMENTS MUST BE CARRIED OUT AS PER PROCEDURES SET OUT IN "NTR 424/ OSP 15" IN THE NETWORK RULES AND OPERATORS SPECIFIC PROCEDURES MANUALS.

AT THE YAGOONA END OF BANKSTOWN STATION THE FOLLOWING NOTICE IS FIXED TO THE POST OF SIGNAL No. SM 339

**WARNING**  
**TRAINS PROCEEDING TO LOOP NOTE**  
LOOP LINE 8 CARS LONG  
CATCH POINTS BEYOND SIGNAL AT END OF LOOP  
PROCEED CAUTIOUSLY INTO LOOP

**BANKSTOWN**

TERMINATING TRAINS (UNDER NORMAL CONDITIONS)

FROM	TERMINATE AT	THEN GO TO
UP BANKSTOWN MAIN	No. 1 PLATFORM	RETURN TO DOWN BANKSTOWN LINE VIA THE LOOP LINE OR SHUNT FORWARD AND THEN RETURN TO No. 2 PLATFORM
DOWN BANKSTOWN MAIN	No. 2 PLATFORM	RETURN TO THE UP VIA 360 CROSSOVER OR SHUNT FORWARD INTO THE LOOP LINE AND THEN RETURN TO No. 1 PLATFORM

SIGNAL	DESTINATION	INDICATION
SM 335	DOWN BANKSTOWN	DB
	UP BANKSTOWN	UB
SIGNAL	DESTINATION	INDICATION
SM 339	DOWN BANKSTOWN	-
	DOWN BANKSTOWN	DB
	LOOP LINE	LL
SIGNAL	DESTINATION	INDICATION
SM 342	UP BANKSTOWN	UB
	DOWN BANKSTOWN	DB

SECTION : **YAGOONA TO BIRRONG**  
MAP SET : SYDENHAM TO REGENTS PARK  
UPDATED TO : 17 August 2019

GRADIENT

**INFORMATION**

CONTROLLED FROM : SYDENHAM /  
RAIL OPERATIONS CENTRE  
RADIO AREA CODE : 057 (BANKSTOWN)  
054 (SEFTON PARK JUNCTION)

1 IN 225

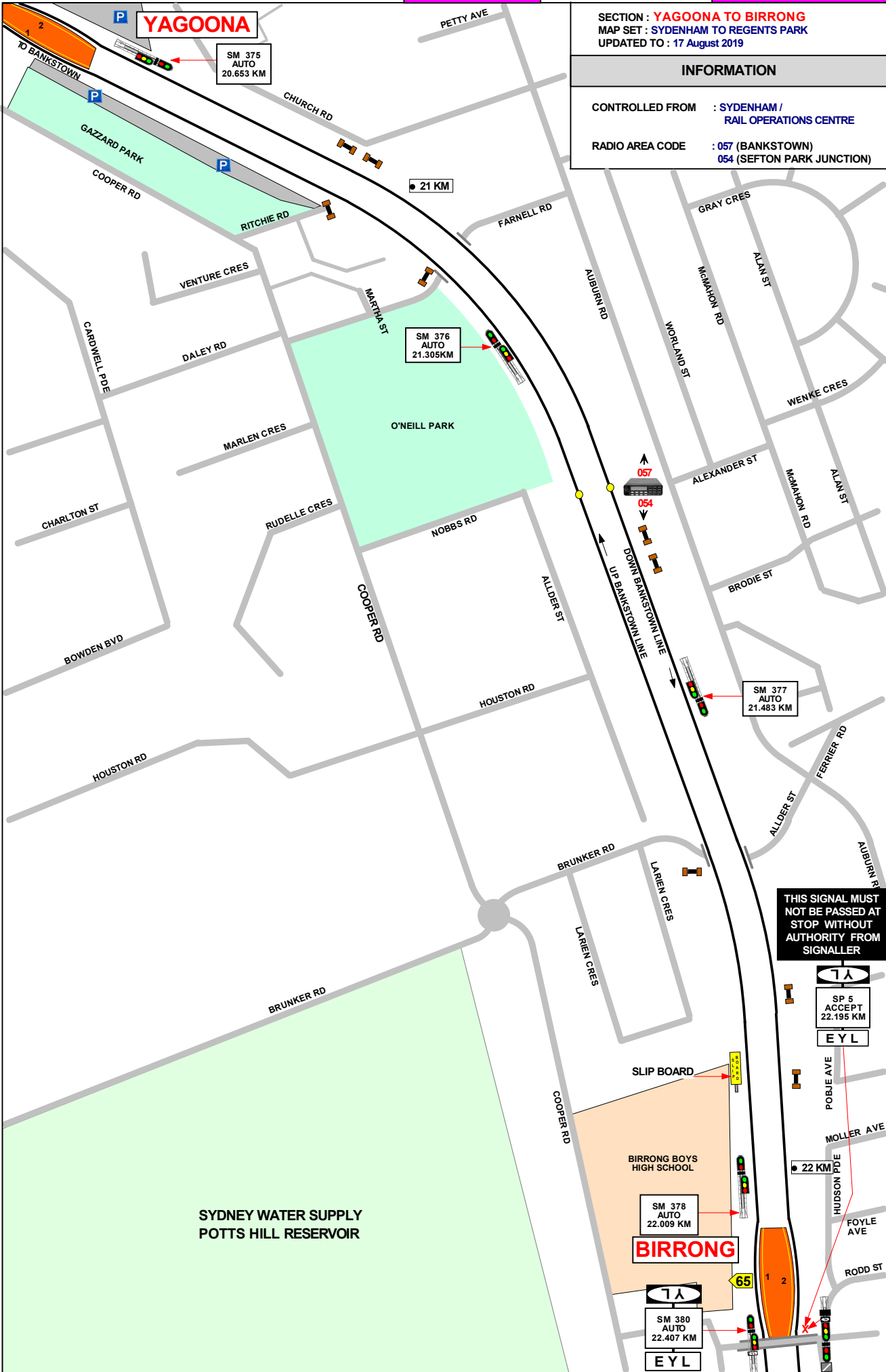
LEVEL

1 IN 79

1 IN 72

1 IN 1320

1 IN 70



**THIS SIGNAL MUST NOT BE PASSED AT STOP WITHOUT AUTHORITY FROM SIGNALLER**

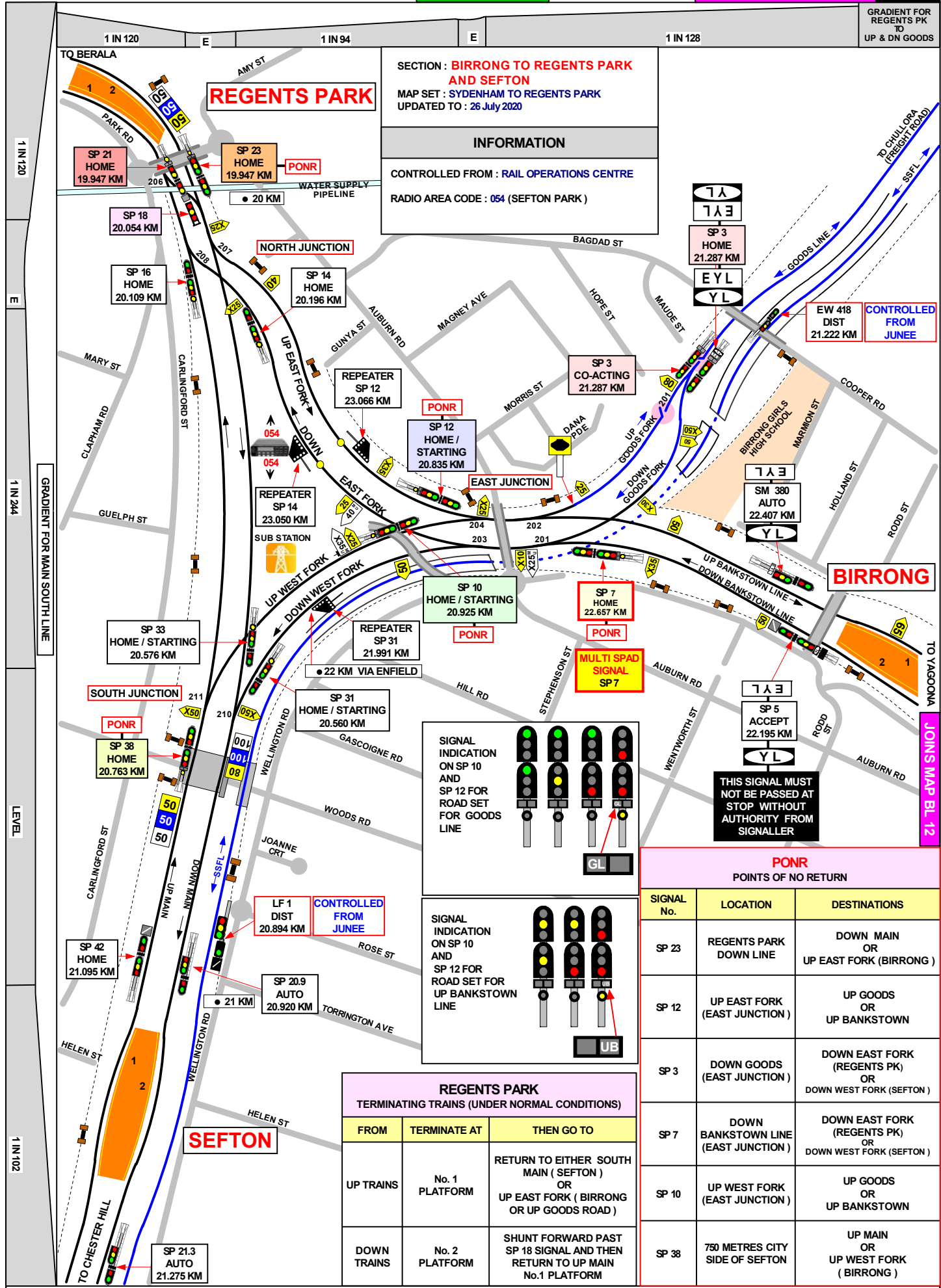
**7A**  
SP 5  
ACCEPT  
22.195 KM  
**EYL**

**BIRRONG**

**7A**  
SM 380  
AUTO  
22.407 KM  
**EYL**

TO REGENTS PARK OR SEFTON

GRADIENT FOR REGENTS PK TO UP & DN GOODS

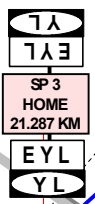


**SECTION : BIRONG TO REGENTS PARK AND SEFTON**  
 MAP SET : SYDENHAM TO REGENTS PARK  
 UPDATED TO : 26 July 2020

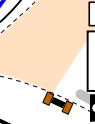
**INFORMATION**

CONTROLLED FROM : RAIL OPERATIONS CENTRE

RADIO AREA CODE : 054 (SEFTON PARK)

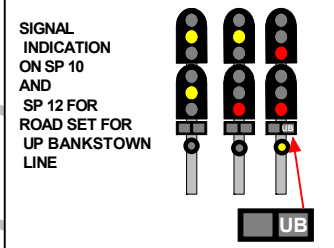
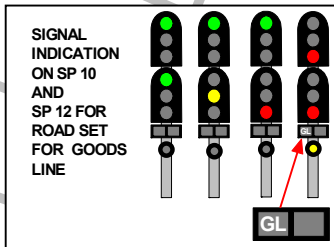


EW 418 DIST 21.222 KM  
 CONTROLLED FROM JUNE



**BIRONG**

THIS SIGNAL MUST NOT BE PASSED AT STOP WITHOUT AUTHORITY FROM SIGNALLER



**PONR POINTS OF NO RETURN**

SIGNAL No.	LOCATION	DESTINATIONS
SP 23	REGENTS PARK DOWN LINE	DOWN MAIN OR UP EAST FORK (BIRONG)
SP 12	UP EAST FORK (EAST JUNCTION)	UP GOODS OR UP BANKSTOWN
SP 3	DOWN GOODS (EAST JUNCTION)	DOWN EAST FORK (REGENTS PK) OR DOWN WEST FORK (SEFTON)
SP 7	DOWN BANKSTOWN LINE (EAST JUNCTION)	DOWN EAST FORK (REGENTS PK) OR DOWN WEST FORK (SEFTON)
SP 10	UP WEST FORK (EAST JUNCTION)	UP GOODS OR UP BANKSTOWN
SP 38	750 METRES CITY SIDE OF SEFTON	UP MAIN OR UP WEST FORK (BIRONG)

**REGENTS PARK TERMINATING TRAINS (UNDER NORMAL CONDITIONS)**

FROM	TERMINATE AT	THEN GO TO
UP TRAINS	No. 1 PLATFORM	RETURN TO EITHER SOUTH MAIN ( SEFTON ) OR UP EAST FORK ( BIRONG OR UP GOODS ROAD )
DOWN TRAINS	No. 2 PLATFORM	SHUNT FORWARD PAST SP 18 SIGNAL AND THEN RETURN TO UP MAIN No.1 PLATFORM

LEVEL