

DRIVERS ROUTE KNOWLEDGE DIAGRAMS

NORTH COAST (HUNTER) LINE

TELARAH

MINDARIBBA

PATERSON

MARTIN'S CREEK

KILBRIDE

HILLDALE

WALLAROBBA

WALLAROBBA LOOP

WIRRAGULLA

DUNOG

Effective Date: January 2023

Version: 4.16

Explanatory Notes:

Navigate to your area of interest via the station index or by using links created in Adobe bookmarks.

This document is approved for **route knowledge only**.

Do not use these diagrams for any safety related purpose without validating the information against a controlled source or in the field.

Information in these diagrams is uncontrolled.

Please report any updates to
gjs.support@transport.nsw.gov.au



Copyright: Sydney Trains

Ownership: Geospatial Services,
Enterprise Asset Systems

Location: TRIM Record No.D2015/570

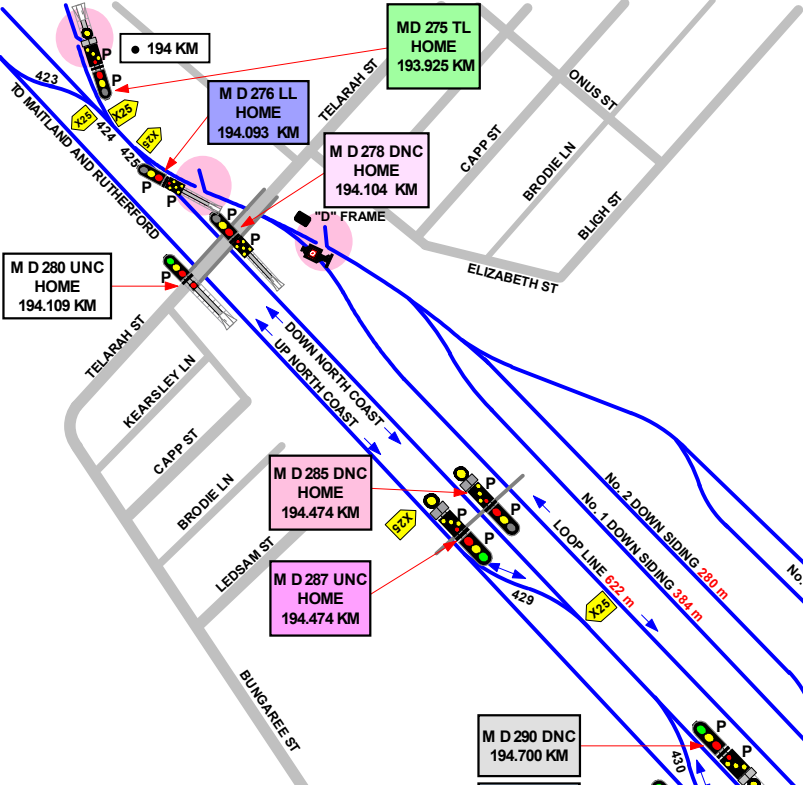
SECTION : TELARAH YARD
 MAP SET : MAITLAND TO DUNGO
 UPDATED TO : 13 January 2023

CONTROLLED FROM : LOWER HUNTER NCCN
 PHONE (02) 4902 7909
 EMERGENCY NO. (02) 4902 7969

RADIO AREA CODE :
 NATIONAL TRAIN COMMUNICATION SYSTEM (NTCS)

SIGNAL	DESTINATION	INDICATION
MD 276 LL	UP OR DOWN COAST (M)	OR
	UP OR DOWN COAST (M)	-
	TRIANGLE LOOP (M)	OR

SIGNAL	DESTINATION	INDICATION
MD 278 DNC	UP OR DOWN COAST (M)	OR
	UP OR DOWN COAST (M)	-
	TRIANGLE LOOP (M)	OR



SIGNAL	DESTINATION	INDICATION
MD 292 UNC	UP COAST (M)	---
	DOWN COAST (M)	OR

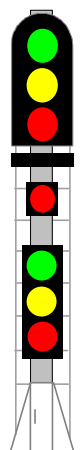
SIGNAL	DESTINATION	INDICATION
MD 275 TL	LOOP LINE (M)	OR
	LOOP LINE (S)	LL
	DN NTH COAST (M)	---
MD 275 TL	DN NTH COAST (S)	DC

SIGNAL	DESTINATION	INDICATION
MD 285 DNC	DOWN COAST (M)	-
	DOWN COAST (S)	DC
	UP COAST (M)	OR
	UP COAST (S)	UC

SIGNAL	DESTINATION	INDICATION
MD 287 UNC	DOWN COAST (M)	OR
	DOWN COAST (S)	DC
	UP COAST (M)	---
	UP COAST (S)	UC

SIGNAL	DESTINATION	INDICATION
MD 290 DNC	UP COAST (M)	OR
	UP COAST (S)	UC
	DOWN COAST (M)	-
	DOWN COAST (S)	DC

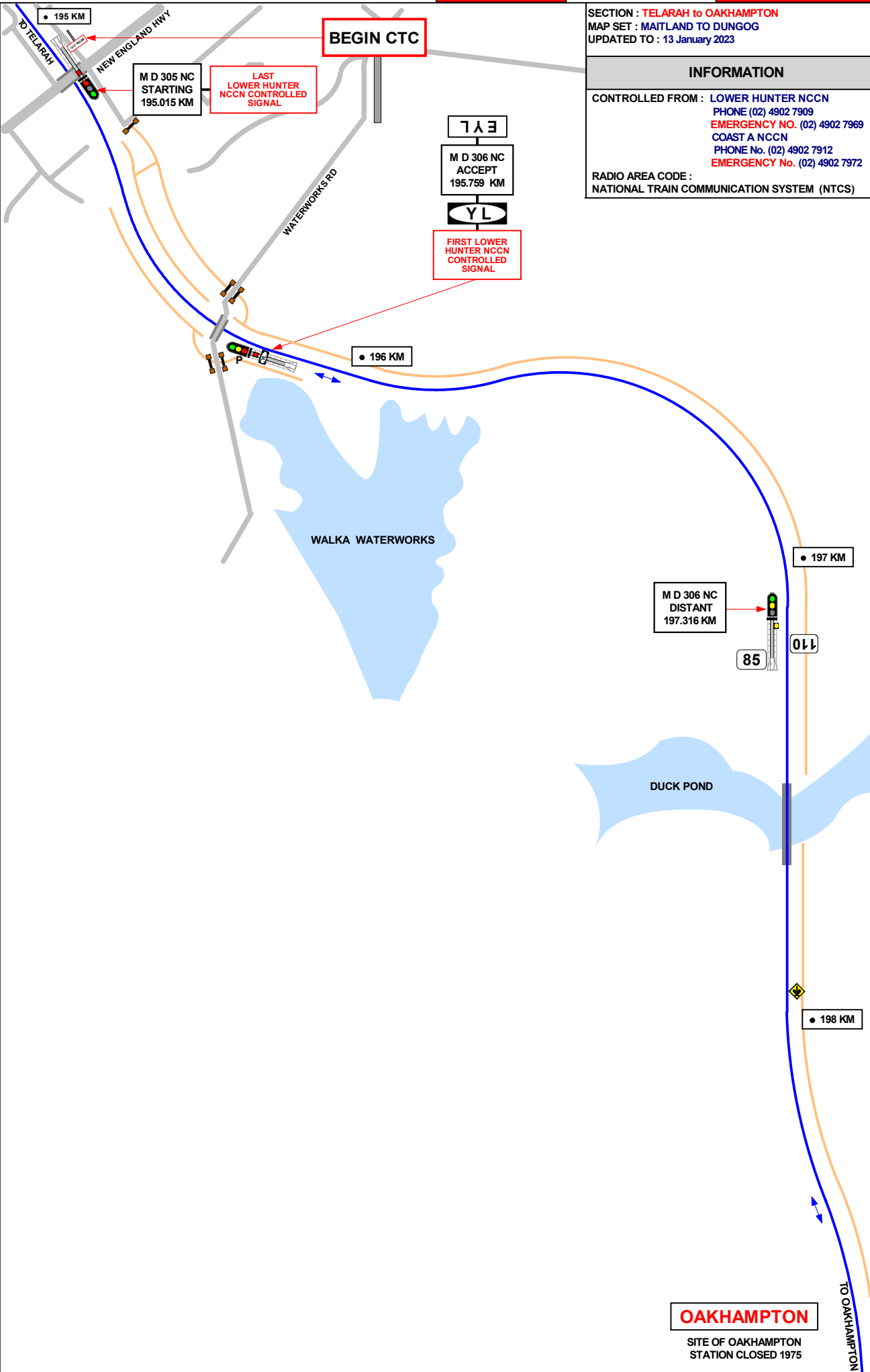
SIGNAL	DESTINATION	INDICATION
MD 304 NC	UP COAST (M)	-
	UP COAST (S)	UC
	DOWN COAST (M)	OR + D
	DOWN COAST (S)	DC
	LOOP LINE (M)	OR + L
	LOOP LINE (S)	L



MD 303 DNC HOME 194.850 KM AND CO ACTING HEAD

TELARAH

LAST LOWER HUNTER NCCN CONTROLLED SIGNAL



SECTION : TELARAH to OAKHAMPTON
 MAP SET : MAITLAND TO DUNGOG
 UPDATED TO : 13 January 2023

INFORMATION

CONTROLLED FROM : LOWER HUNTER NCCN
 PHONE (02) 4902 7909
 EMERGENCY NO. (02) 4902 7969
 COAST A NCCN
 PHONE No. (02) 4902 7912
 EMERGENCY No. (02) 4902 7972

RADIO AREA CODE :
 NATIONAL TRAIN COMMUNICATION SYSTEM (NTCS)

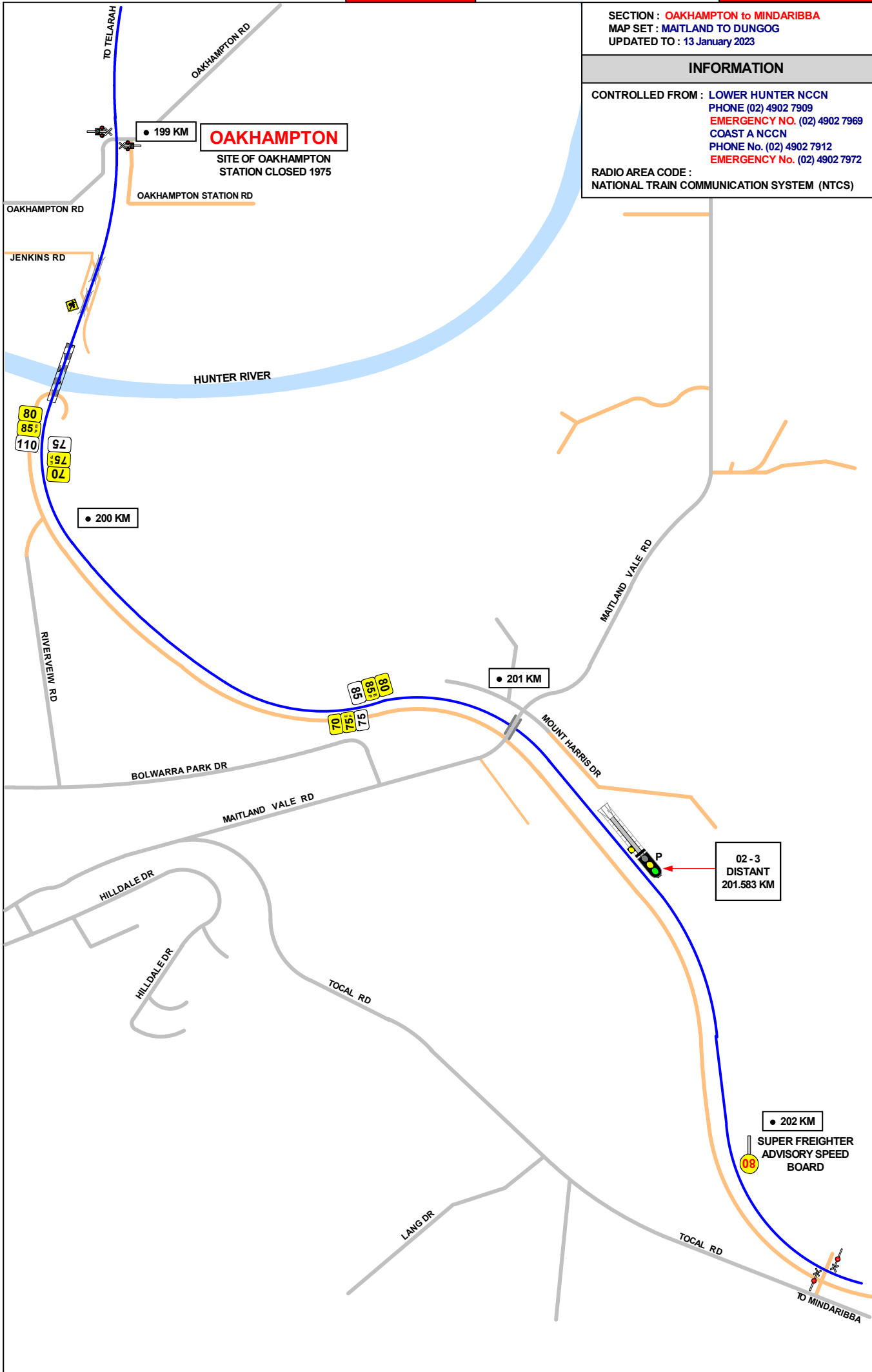
GRADIENT	
1 IN 110	E
1 IN 80	
1 IN 80	
LEVEL	
1 IN 88	

BEGIN CTC

LAST LOWER HUNTER NCCN CONTROLLED SIGNAL

YL
 M D 306 NC ACCEPT 195.759 KM
 YL
 FIRST LOWER HUNTER NCCN CONTROLLED SIGNAL

OAKHAMPTON
 SITE OF OAKHAMPTON STATION CLOSED 1975

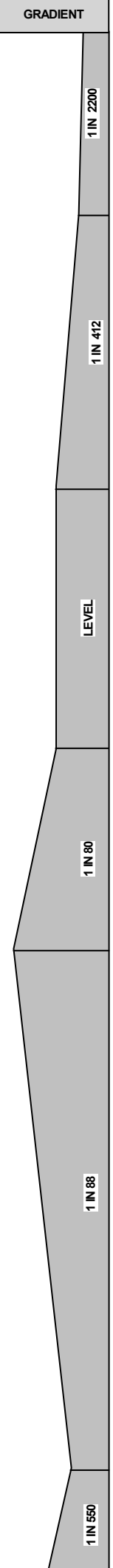


SECTION : OAKHAMPTON to MINDARIBBA
 MAP SET : MAITLAND TO DUNGOG
 UPDATED TO : 13 January 2023

INFORMATION

CONTROLLED FROM : LOWER HUNTER NCCN
 PHONE (02) 4902 7909
 EMERGENCY NO. (02) 4902 7969
 COAST A NCCN
 PHONE No. (02) 4902 7912
 EMERGENCY No. (02) 4902 7972

RADIO AREA CODE :
 NATIONAL TRAIN COMMUNICATION SYSTEM (NTCS)



SIGNAL	DESTINATION	INDICATION
02 - 3	MAIN LINE (M)	----
	LOOP LINE (S)	●● OR ●●●

SECTION : MINDARIBBA to PATERSON
 MAP SET : MAITLAND TO DUNGOG
 UPDATED TO : 13 January 2023

GRADIENT

INFORMATION

CONTROLLED FROM : LOWER HUNTER NCCN
 PHONE (02) 4902 7909
 EMERGENCY NO. (02) 4902 7969
 COAST A NCCN
 PHONE No. (02) 4902 7912
 EMERGENCY No. (02) 4902 7972

RADIO AREA CODE :
 NATIONAL TRAIN COMMUNICATION SYSTEM (NTCS)

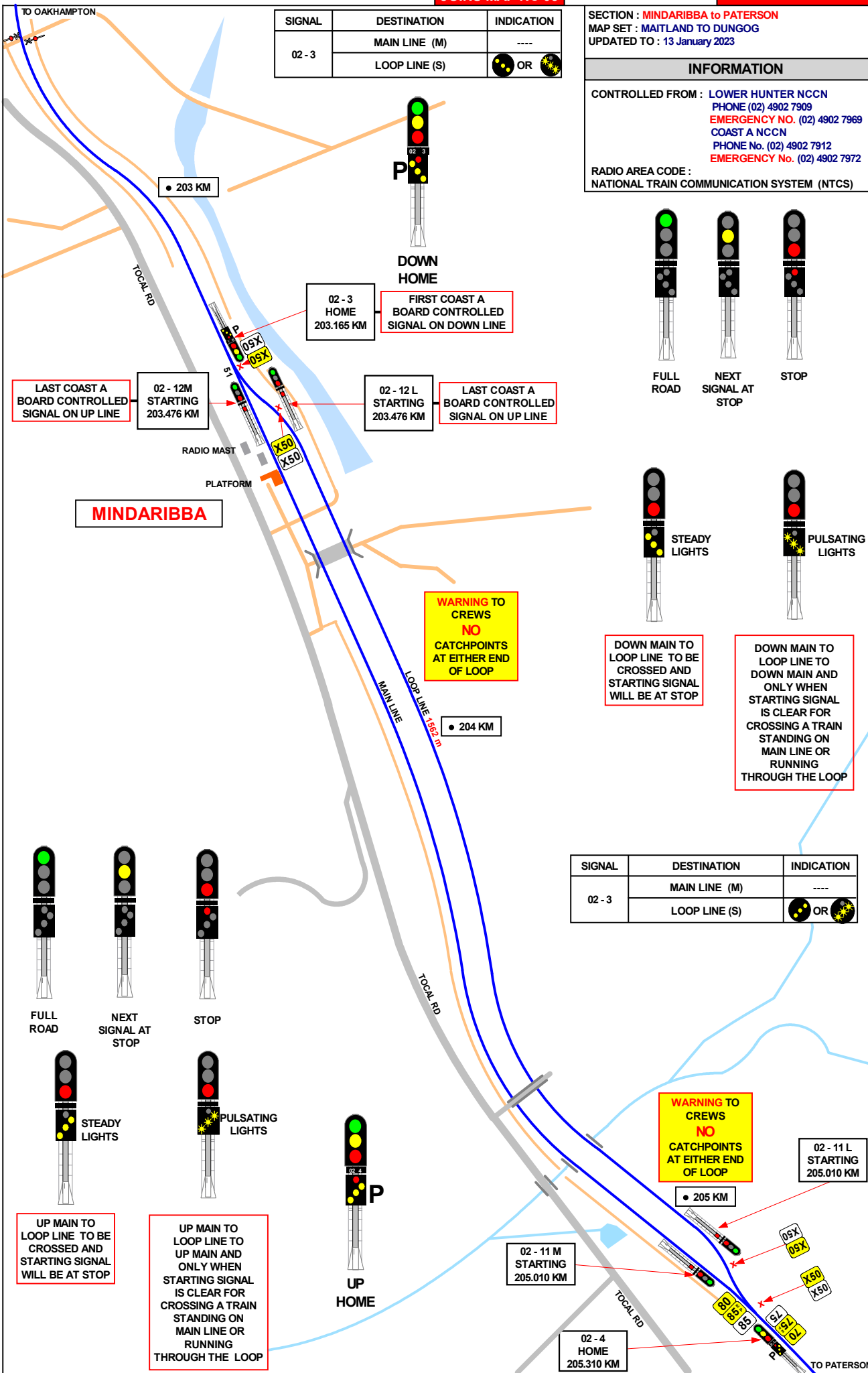
1 IN 550

1 IN 80

1 IN 120

LEVEL

1 IN 367



DOWN HOME

02 - 3 HOME 203.165 KM
 FIRST COAST A BOARD CONTROLLED SIGNAL ON DOWN LINE

LAST COAST A BOARD CONTROLLED SIGNAL ON UP LINE

02 - 12M STARTING 203.476 KM

02 - 12 L STARTING 203.476 KM

LAST COAST A BOARD CONTROLLED SIGNAL ON UP LINE

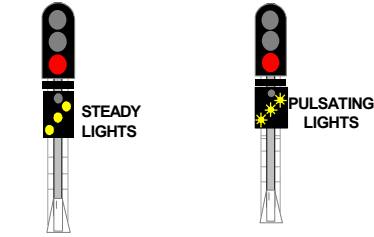
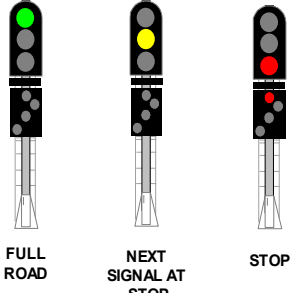
MINDARIBBA

WARNING TO CREWS
 NO CATCHPOINTS AT EITHER END OF LOOP

DOWN MAIN TO LOOP LINE TO BE CROSSED AND STARTING SIGNAL WILL BE AT STOP

DOWN MAIN TO LOOP LINE TO DOWN MAIN AND ONLY WHEN STARTING SIGNAL IS CLEAR FOR CROSSING A TRAIN STANDING ON MAIN LINE OR RUNNING THROUGH THE LOOP

SIGNAL	DESTINATION	INDICATION
02 - 3	MAIN LINE (M)	----
	LOOP LINE (S)	●● OR ●●●



UP MAIN TO LOOP LINE TO BE CROSSED AND STARTING SIGNAL WILL BE AT STOP

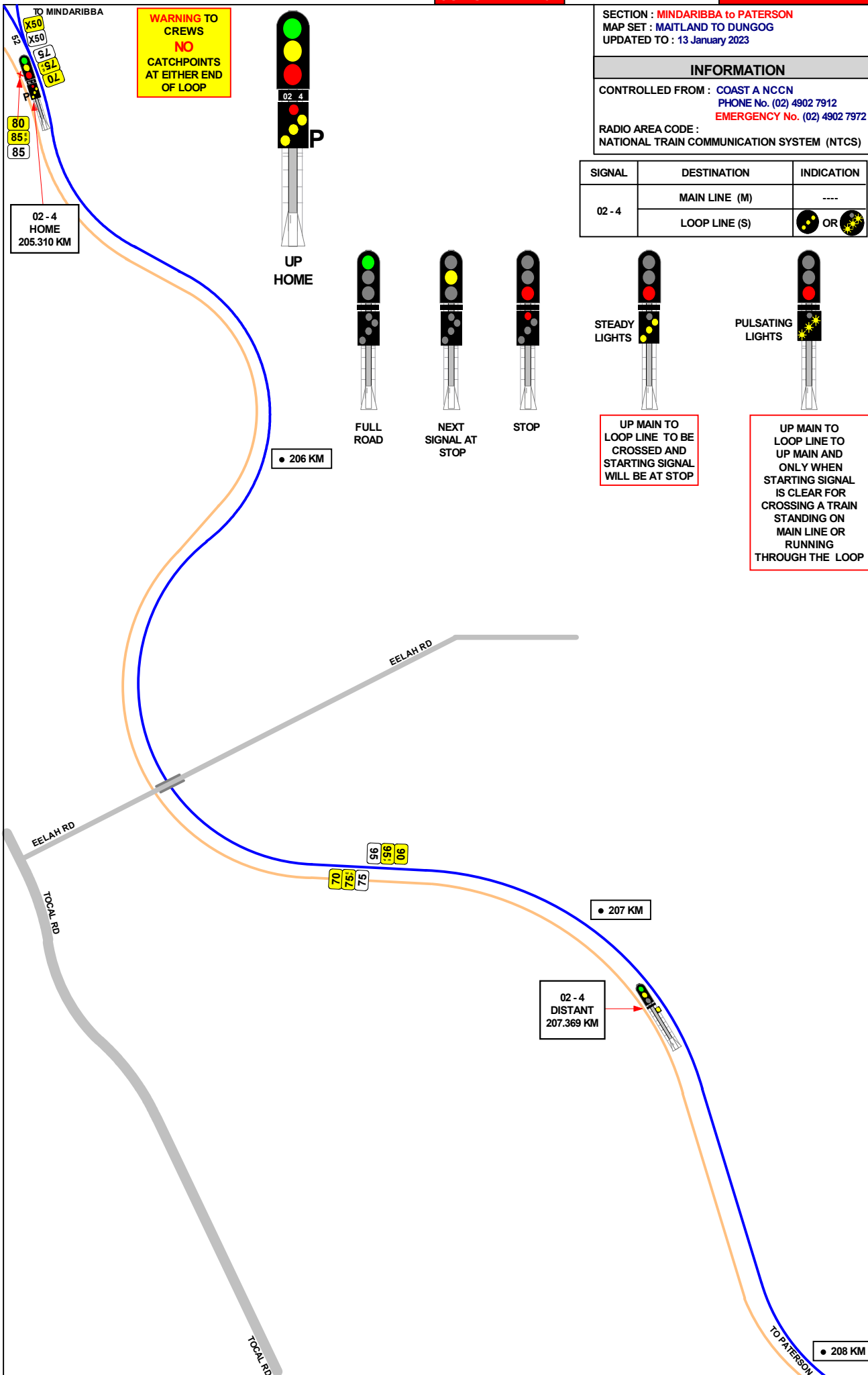
UP MAIN TO LOOP LINE TO UP MAIN AND ONLY WHEN STARTING SIGNAL IS CLEAR FOR CROSSING A TRAIN STANDING ON MAIN LINE OR RUNNING THROUGH THE LOOP

WARNING TO CREWS
 NO CATCHPOINTS AT EITHER END OF LOOP

02 - 11 L STARTING 205.010 KM

02 - 11 M STARTING 205.010 KM

02 - 4 HOME 205.310 KM



WARNING TO CREWS
NO
 CATCHPOINTS
 AT EITHER END
 OF LOOP

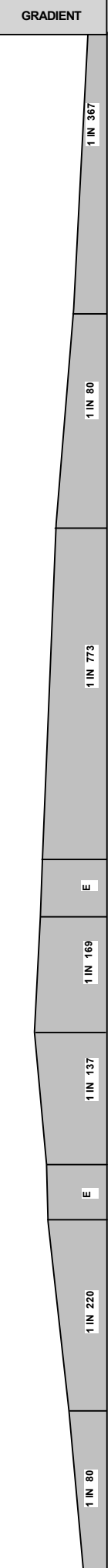
SECTION : MINDARIBBA to PATERSON
 MAP SET : MAITLAND TO DUNGOG
 UPDATED TO : 13 January 2023

INFORMATION

CONTROLLED FROM : COAST A NCCN
 PHONE No. (02) 4902 7912
 EMERGENCY No. (02) 4902 7972

RADIO AREA CODE :
 NATIONAL TRAIN COMMUNICATION SYSTEM (NTCS)

SIGNAL	DESTINATION	INDICATION
02 - 4	MAIN LINE (M)	----
	LOOP LINE (S)	●● OR ●●●



SECTION : MINDARIBBA to PATERSON
MAP SET : MAITLAND TO DUNGOG
UPDATED TO : 13 January 2023

GRADIENT

INFORMATION

CONTROLLED FROM : COAST A NCCN
PHONE No. (02) 4902 7912
EMERGENCY No. (02) 4902 7972

RADIO AREA CODE :
NATIONAL TRAIN COMMUNICATION SYSTEM (NTCS)

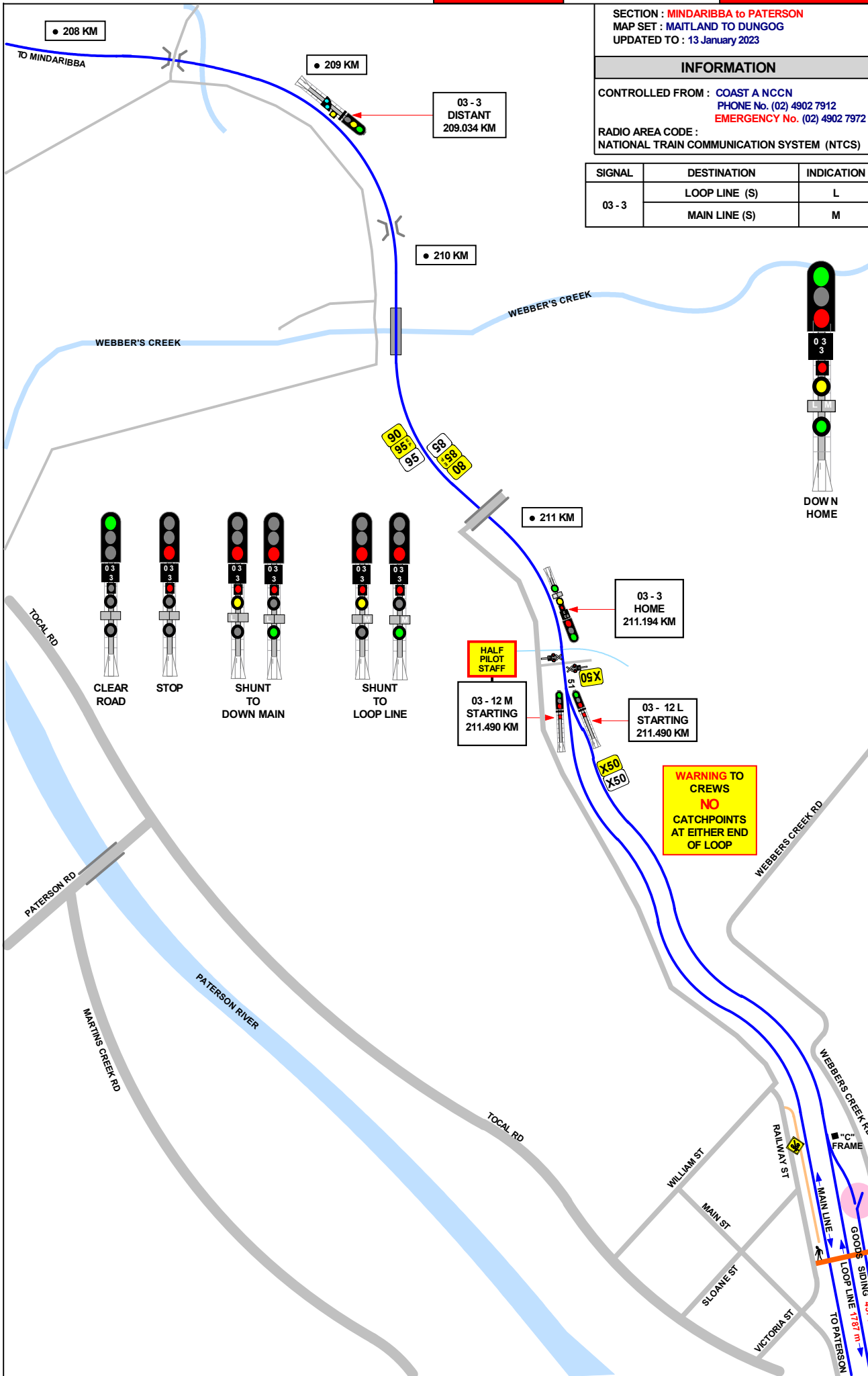
SIGNAL	DESTINATION	INDICATION
03 - 3	LOOP LINE (S)	L
	MAIN LINE (S)	M

1 IN 80

LEVEL

1 IN 220

1 IN 125



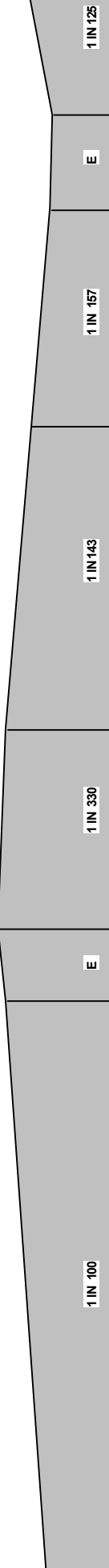
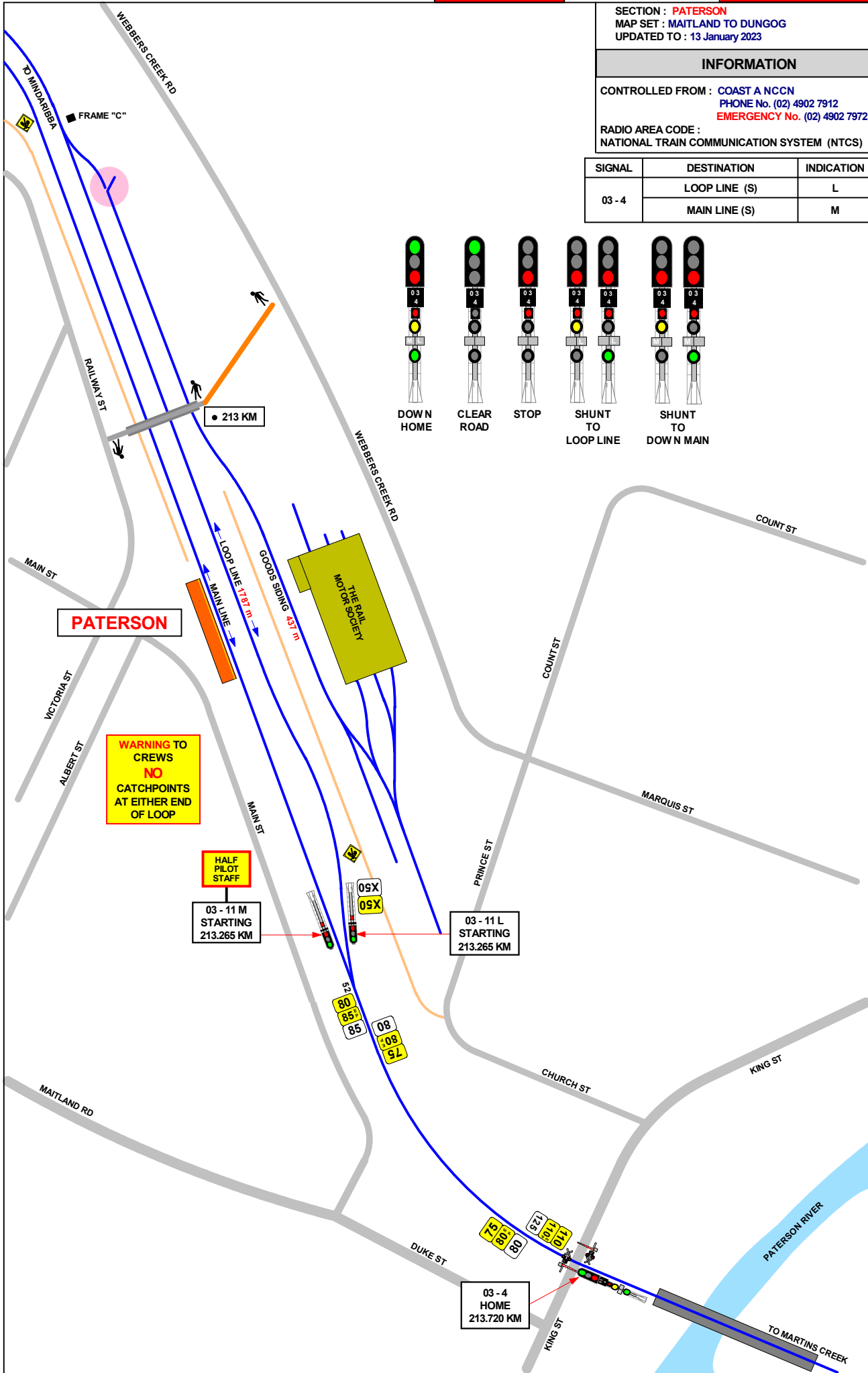
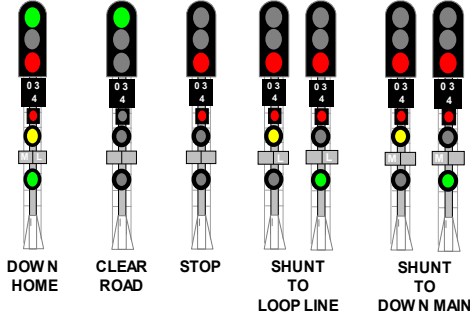
SECTION : PATERSON
MAP SET : MAITLAND TO DUNGOG
UPDATED TO : 13 January 2023

GRADIENT

INFORMATION

CONTROLLED FROM : COAST A NCCN
PHONE No. (02) 4902 7912
EMERGENCY No. (02) 4902 7972
RADIO AREA CODE :
NATIONAL TRAIN COMMUNICATION SYSTEM (NTCS)

SIGNAL	DESTINATION	INDICATION
03 - 4	LOOP LINE (S)	L
	MAIN LINE (S)	M



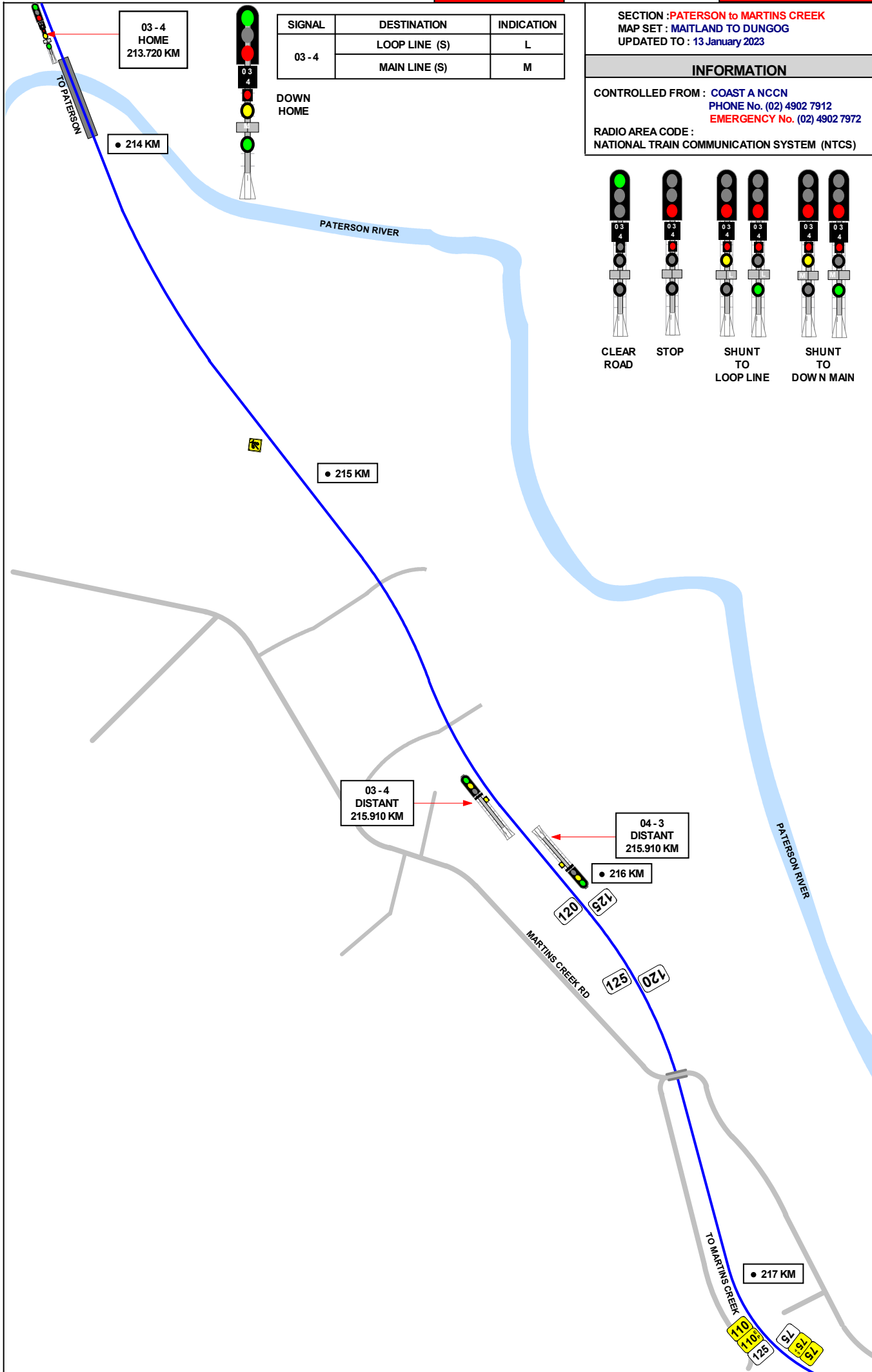
WARNING TO CREWS
NO CATCHPOINTS AT EITHER END OF LOOP

HALF PILOT STAFF

03 - 11 M STARTING
213.265 KM

03 - 11 L STARTING
213.265 KM

03 - 4 HOME
213.720 KM



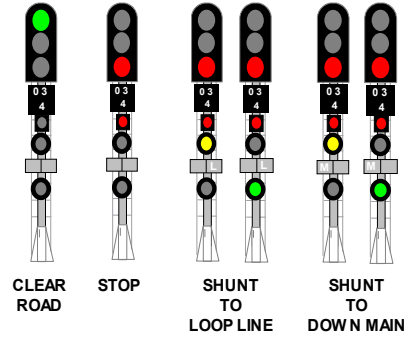
SIGNAL	DESTINATION	INDICATION
03 - 4	LOOP LINE (S)	L
	MAIN LINE (S)	M

DOWN HOME

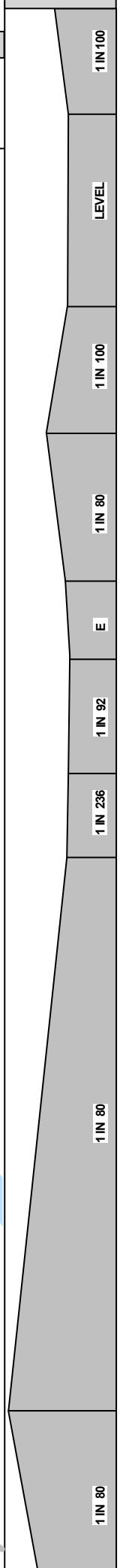
SECTION : PATERSON to MARTINS CREEK
 MAP SET : MATLAND TO DUNGOG
 UPDATED TO : 13 January 2023

INFORMATION

CONTROLLED FROM : COAST A NCCN
 PHONE No. (02) 4902 7912
 EMERGENCY No. (02) 4902 7972
 RADIO AREA CODE : NATIONAL TRAIN COMMUNICATION SYSTEM (NTCS)



GRADIENT



SECTION : MARTINS CREEK to KILBRIDE
MAP SET : MAITLAND TO DUNGOG
UPDATED TO : 13 January 2023

INFORMATION

CONTROLLED FROM : COAST A NCCN
PHONE No. (02) 4902 7912
EMERGENCY No. (02) 4902 7972
RADIO AREA CODE :
NATIONAL TRAIN COMMUNICATION SYSTEM (NTCS)

GRADIENT

1 IN 80

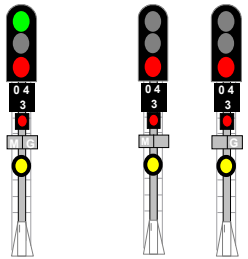
1 IN 80

E

1 IN 80

1 IN 137

1 IN 94

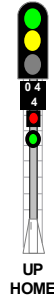


DOWN HOME

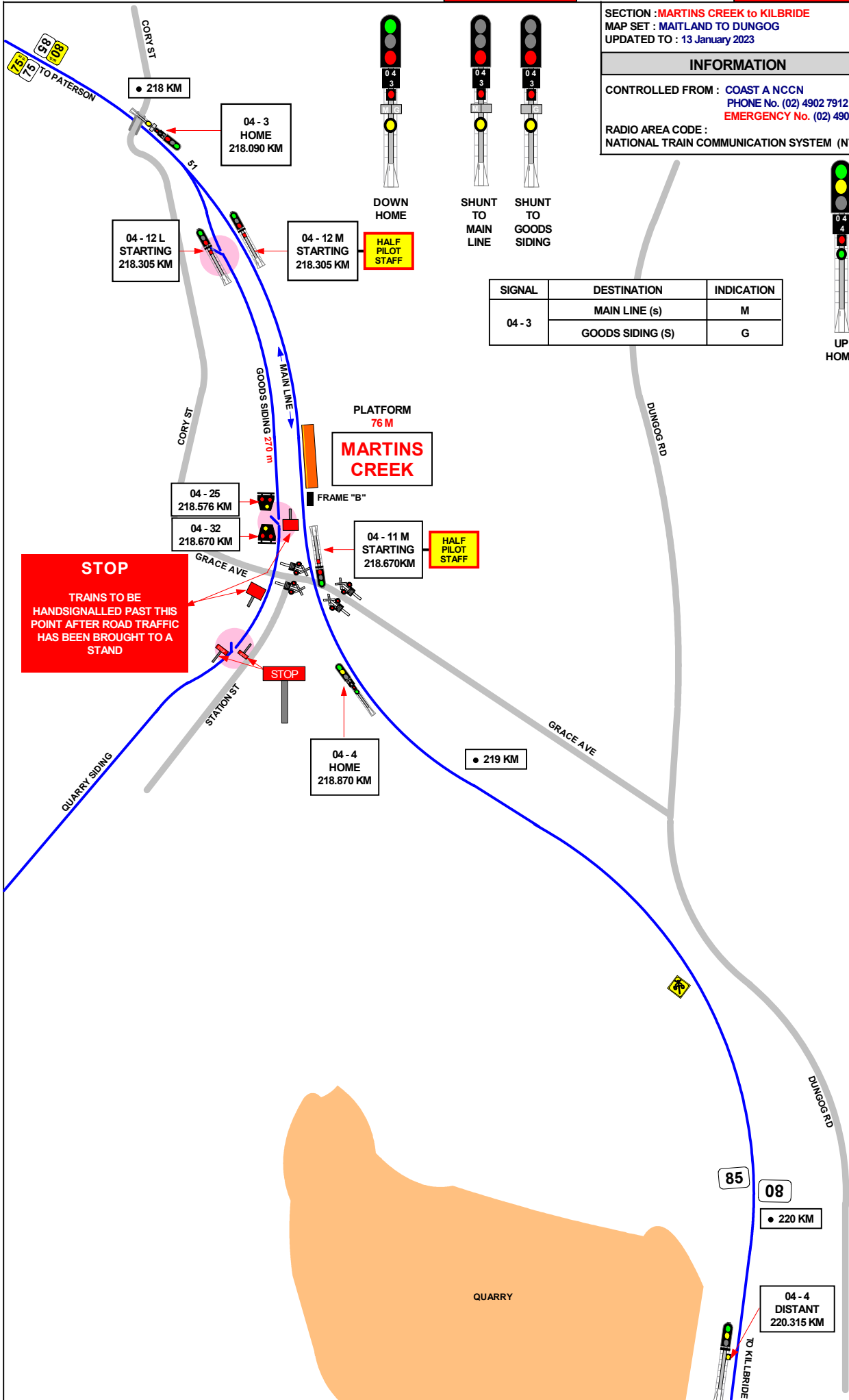
SHUNT TO MAIN LINE

SHUNT TO GOODS SIDING

SIGNAL	DESTINATION	INDICATION
04 - 3	MAIN LINE (s)	M
	GOODS SIDING (S)	G

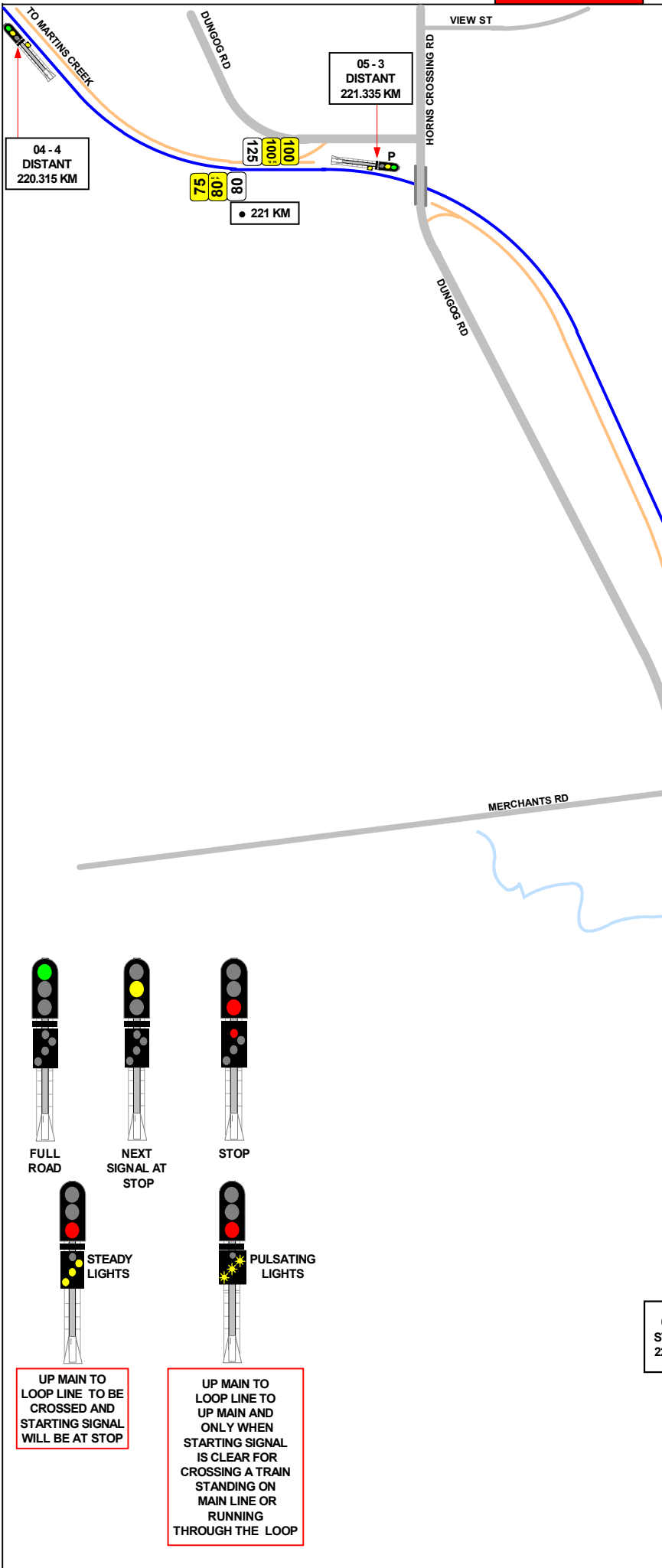


UP HOME



STOP
TRAINS TO BE
HANDSIGNALLED PAST THIS
POINT AFTER ROAD TRAFFIC
HAS BEEN BROUGHT TO A
STAND

STOP



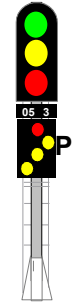
SECTION : MARTINS CREEK to KILBRIDE
 MAP SET : MAITLAND TO DUNGOG
 UPDATED TO : 13 January 2023

INFORMATION

CONTROLLED FROM : COAST A NCCN
 PHONE No. (02) 4902 7912
 EMERGENCY No. (02) 4902 7972

RADIO AREA CODE :
 NATIONAL TRAIN COMMUNICATION SYSTEM (NTCS)

SIGNAL	DESTINATION	INDICATION
05 - 3	MAIN LINE (M)	----
	LOOP LINE (S)	OR



DOWN HOME

GRADIENT

1 IN 94

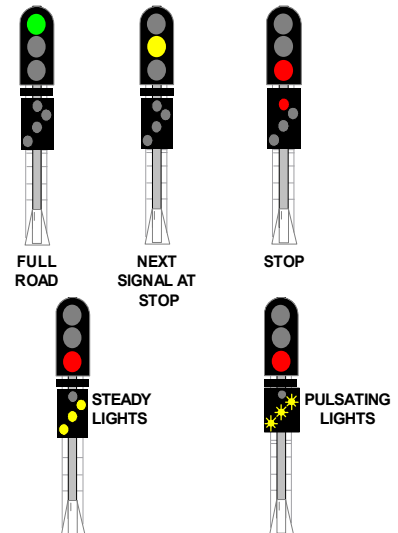
E

1 IN 264

1 IN 80

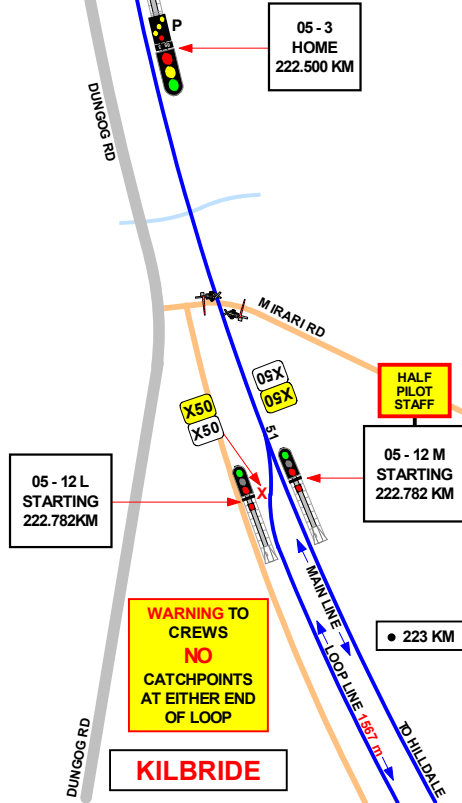
LEVEL

1 IN 88



UP MAIN TO LOOP LINE TO BE CROSSED AND STARTING SIGNAL WILL BE AT STOP

UP MAIN TO LOOP LINE TO UP MAIN AND ONLY WHEN STARTING SIGNAL IS CLEAR FOR CROSSING A TRAIN STANDING ON MAIN LINE OR RUNNING THROUGH THE LOOP



WARNING TO CREWS
 NO CATCHPOINTS AT EITHER END OF LOOP

KILBRIDE

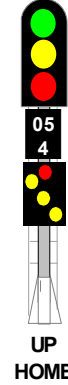
SECTION : KILBRIDE TO HILLDALE
 MAP SET : MAITLAND TO DUNGO
 UPDATED TO : 13 January 2023

GRADIENT

INFORMATION

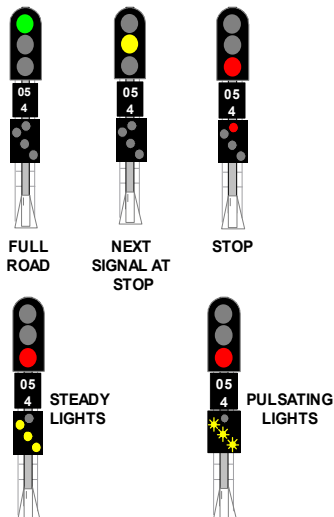
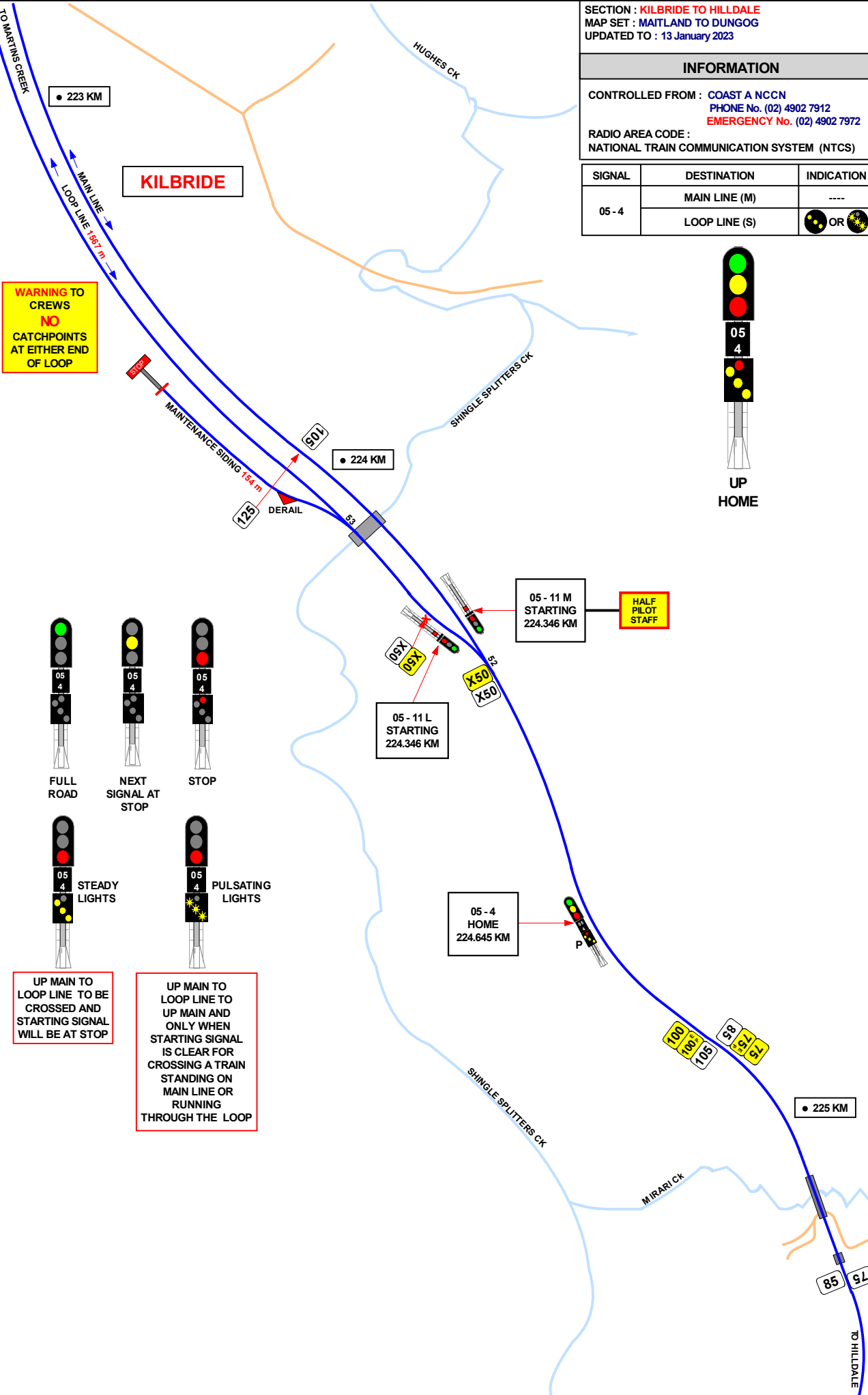
CONTROLLED FROM : COAST A NCCN
 PHONE No. (02) 4902 7912
 EMERGENCY No. (02) 4902 7972
 RADIO AREA CODE :
 NATIONAL TRAIN COMMUNICATION SYSTEM (NTCS)

SIGNAL	DESTINATION	INDICATION
05 - 4	MAIN LINE (M)	----
	LOOP LINE (S)	●● OR ●●●



WARNING TO CREWS
 NO CATCHPOINTS AT EITHER END OF LOOP

KILBRIDE



UP MAIN TO LOOP LINE TO BE CROSSED AND STARTING SIGNAL WILL BE AT STOP

UP MAIN TO LOOP LINE TO UP MAIN AND ONLY WHEN STARTING SIGNAL IS CLEAR FOR CROSSING A TRAIN STANDING ON MAIN LINE OR RUNNING THROUGH THE LOOP



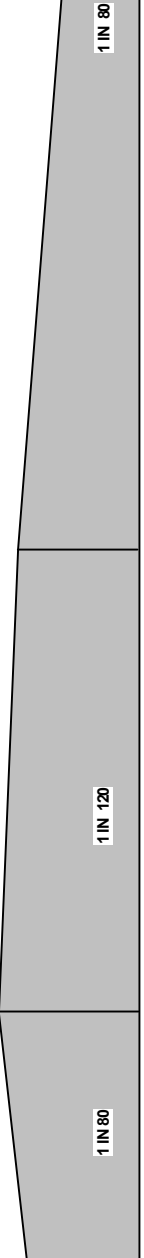
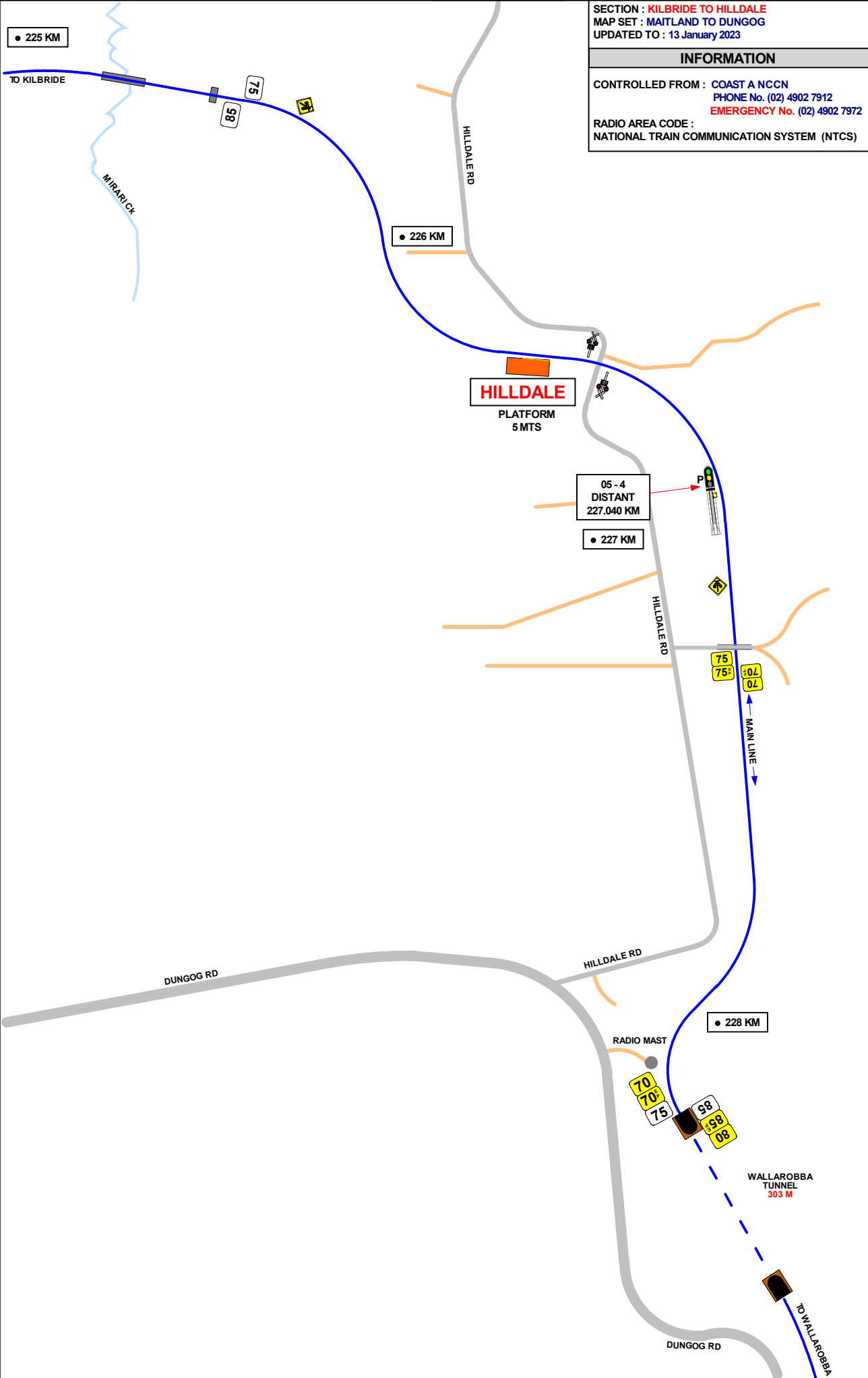
SECTION : KILBRIDE TO HILLDALE
MAP SET : MAITLAND TO DUNGOG
UPDATED TO : 13 January 2023

INFORMATION

CONTROLLED FROM : COAST A NCCN
PHONE No. (02) 4902 7912
EMERGENCY No. (02) 4902 7972

RADIO AREA CODE :
NATIONAL TRAIN COMMUNICATION SYSTEM (NTCS)

GRADIENT



SECTION : HILLDALE TO WALLAROBBA
MAP SET : MAITLAND TO DUNGOG
UPDATED TO : 13 January 2023

INFORMATION

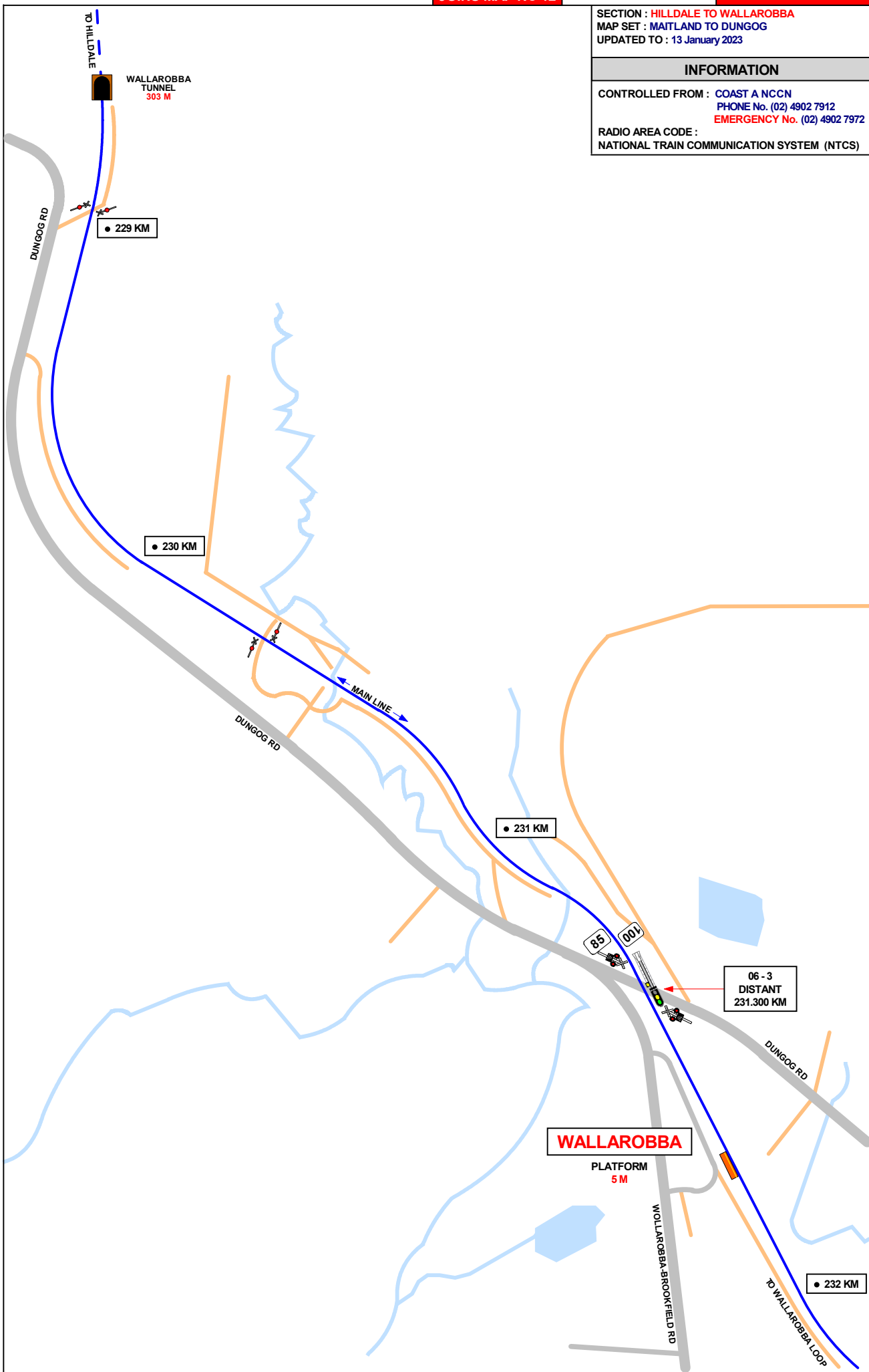
CONTROLLED FROM : COAST A NCCN
PHONE No. (02) 4902 7912
EMERGENCY No. (02) 4902 7972
RADIO AREA CODE :
NATIONAL TRAIN COMMUNICATION SYSTEM (NTCS)

GRADIENT

1 IN 80

1 IN 300

LEVEL

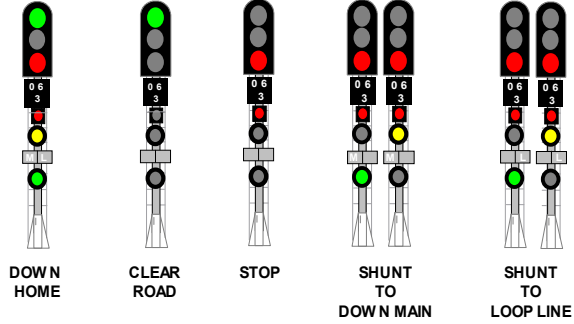


SECTION : WALLAROBBA
 MAP SET : MAITLAND TO DUNGOG
 UPDATED TO : 13 January 2023

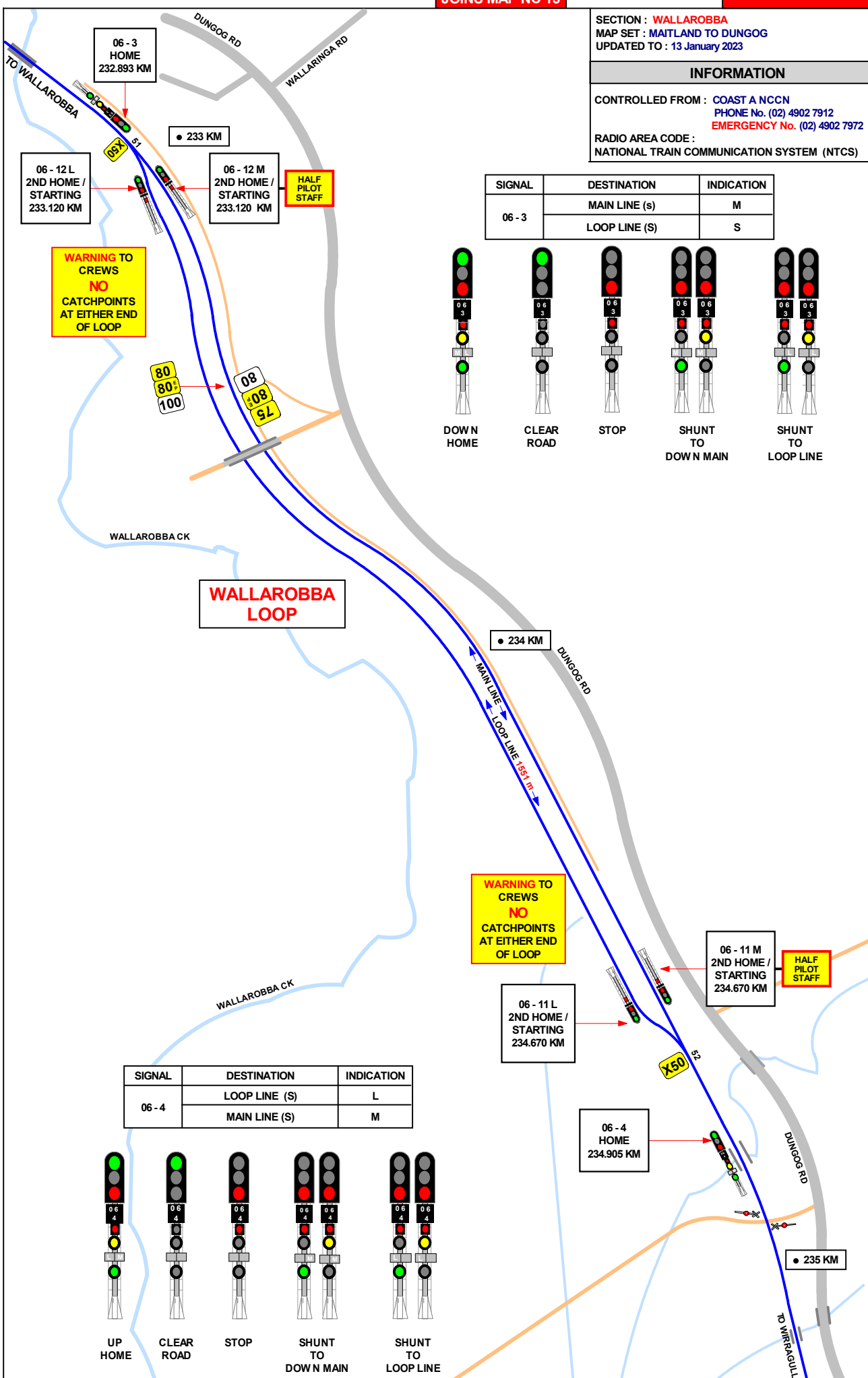
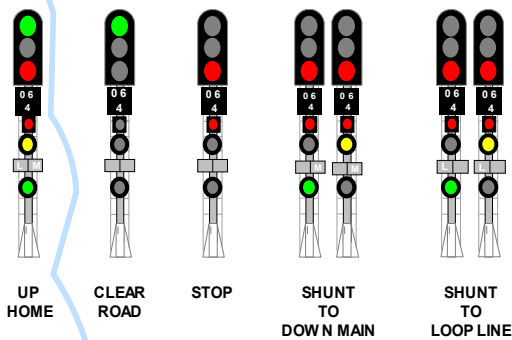
INFORMATION

CONTROLLED FROM : COAST A NCCN
 PHONE No. (02) 4902 7912
 EMERGENCY No. (02) 4902 7972
 RADIO AREA CODE :
 NATIONAL TRAIN COMMUNICATION SYSTEM (NTCS)

SIGNAL	DESTINATION	INDICATION
06 - 3	MAIN LINE (S)	M
	LOOP LINE (S)	S



SIGNAL	DESTINATION	INDICATION
06 - 4	LOOP LINE (S)	L
	MAIN LINE (S)	M



WARNING TO CREWS
 NO
 CATCHPOINTS
 AT EITHER END
 OF LOOP

WARNING TO CREWS
 NO
 CATCHPOINTS
 AT EITHER END
 OF LOOP

GRADIENT

1 IN 110

1 IN 98

LEVEL

1 IN 80

LEVEL

SECTION : WALLAROBBA TO WIRragULLA
MAP SET : MAITLAND TO DUNGOG
UPDATED TO : 13 January 2023

GRADIENT

INFORMATION

CONTROLLED FROM : COAST A NCCN
PHONE No. (02) 4902 7912
EMERGENCY No. (02) 4902 7972

RADIO AREA CODE :
NATIONAL TRAIN COMMUNICATION SYSTEM (NTCS)

1 IN 80

LEVEL

1 IN 90

1 IN 150



SECTION : WIRRAGULLA TO DUNGOG
MAP SET : MATTLAND TO DUNGOG
UPDATED TO : 13 January 2023

INFORMATION

CONTROLLED FROM : COAST A NCCN
PHONE No. (02) 4902 7912
EMERGENCY No. (02) 4902 7972
RADIO AREA CODE :
NATIONAL TRAIN COMMUNICATION SYSTEM (NTCS)

GRADIENT

1 IN 80

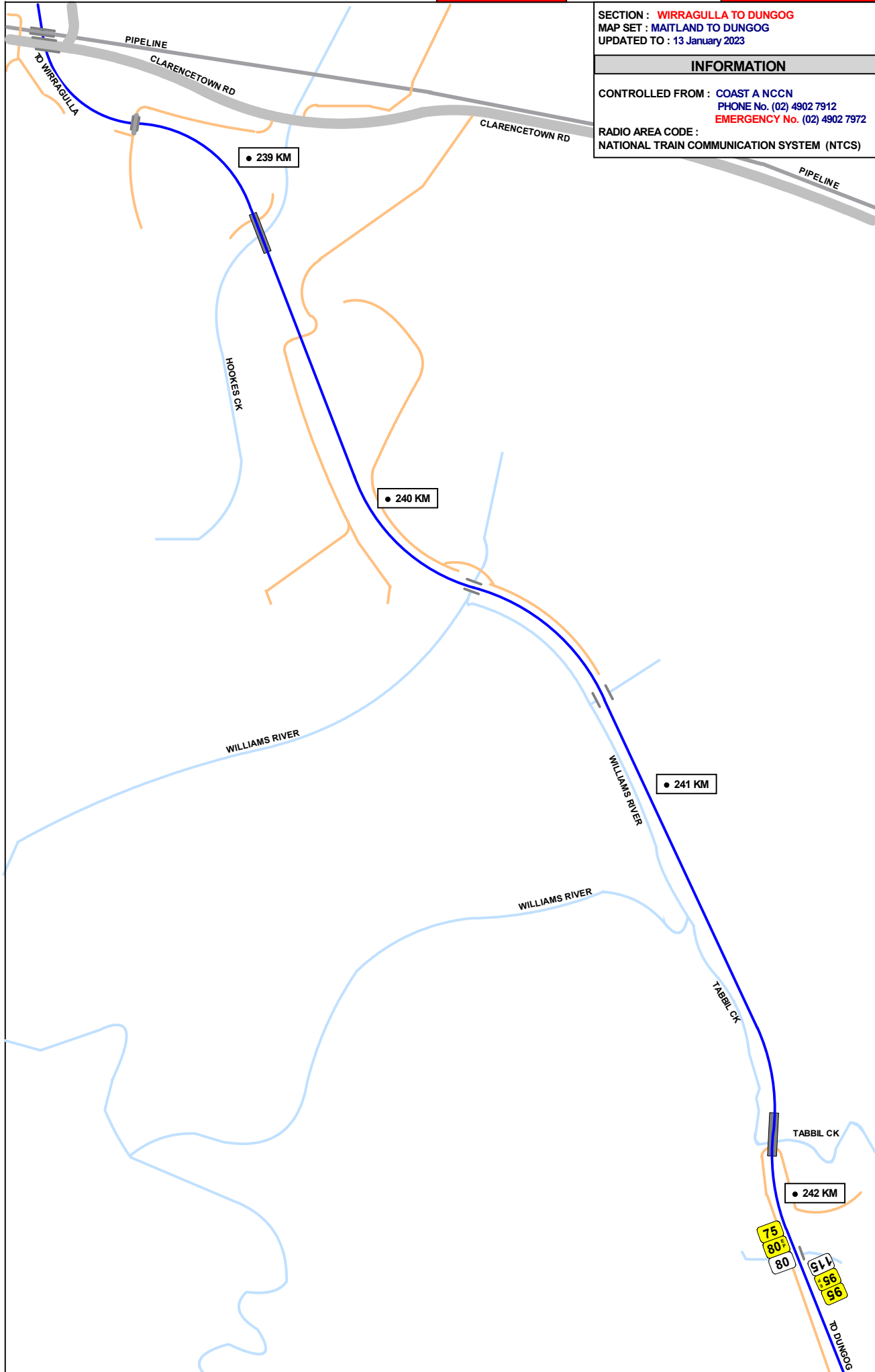
LEVEL

1 IN 110

1 IN 100

E

1 IN 1100



SECTION : WIRRAGULLA TO DUNGOG
 MAP SET : MAITLAND TO DUNGOG
 UPDATED TO : 13 January 2023

INFORMATION

CONTROLLED FROM : COAST A NCCN
 PHONE No. (02) 4902 7912
 EMERGENCY No. (02) 4902 7972
 RADIO AREA CODE :
 NATIONAL TRAIN COMMUNICATION SYSTEM (NTCS)

GRADIENT

LEVEL

1 IN 80

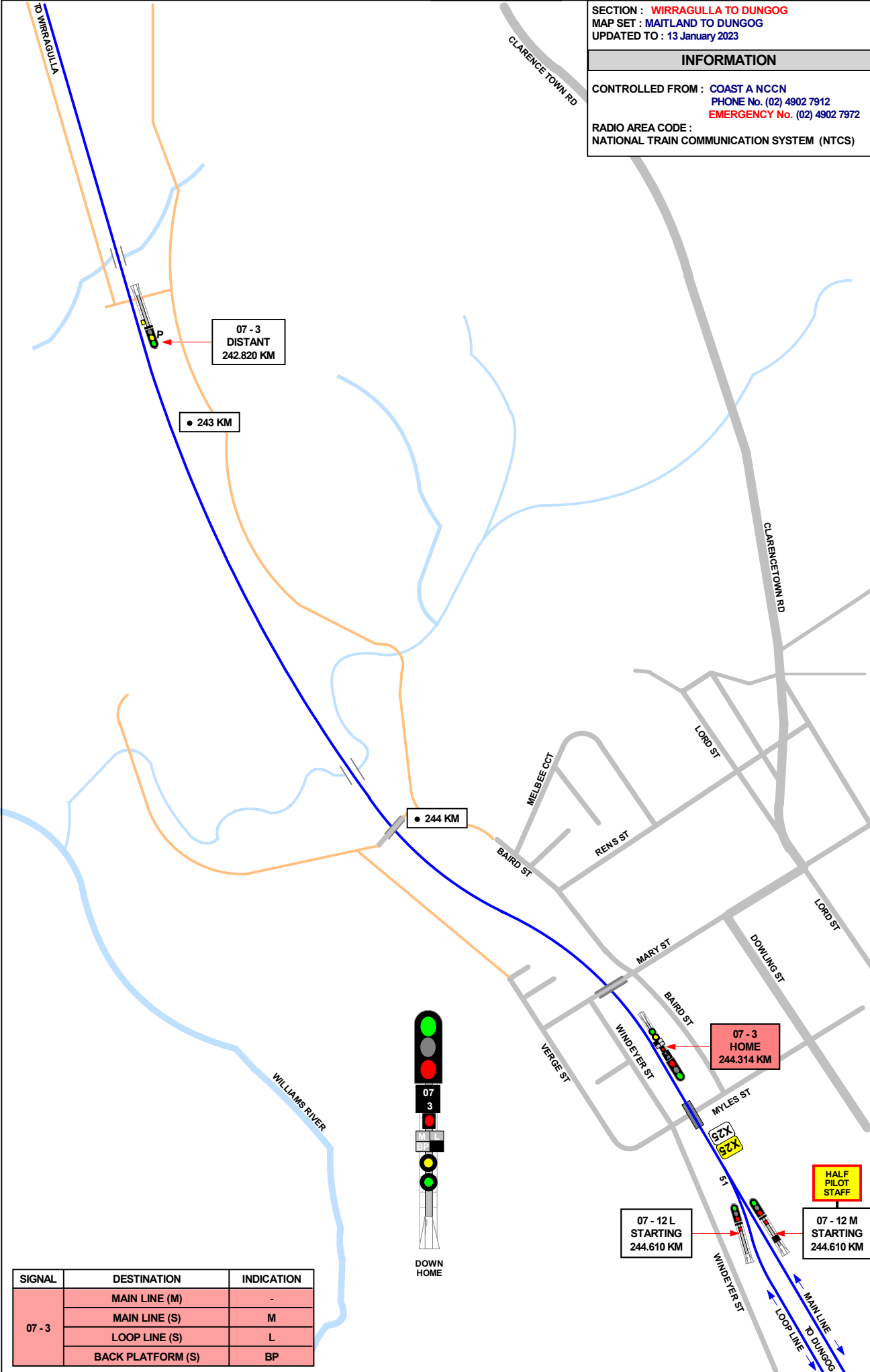
1 IN 330

1 IN 88

E

1 IN 116

1 IN 264



07 - 3
 DISTANT
 242.820 KM

● 243 KM

● 244 KM

07 - 3
 HOME
 244.314 KM

07 - 12 L
 STARTING
 244.610 KM

07 - 12 M
 STARTING
 244.610 KM

SIGNAL	DESTINATION	INDICATION
07 - 3	MAIN LINE (M)	-
	MAIN LINE (S)	M
	LOOP LINE (S)	L
	BACK PLATFORM (S)	BP

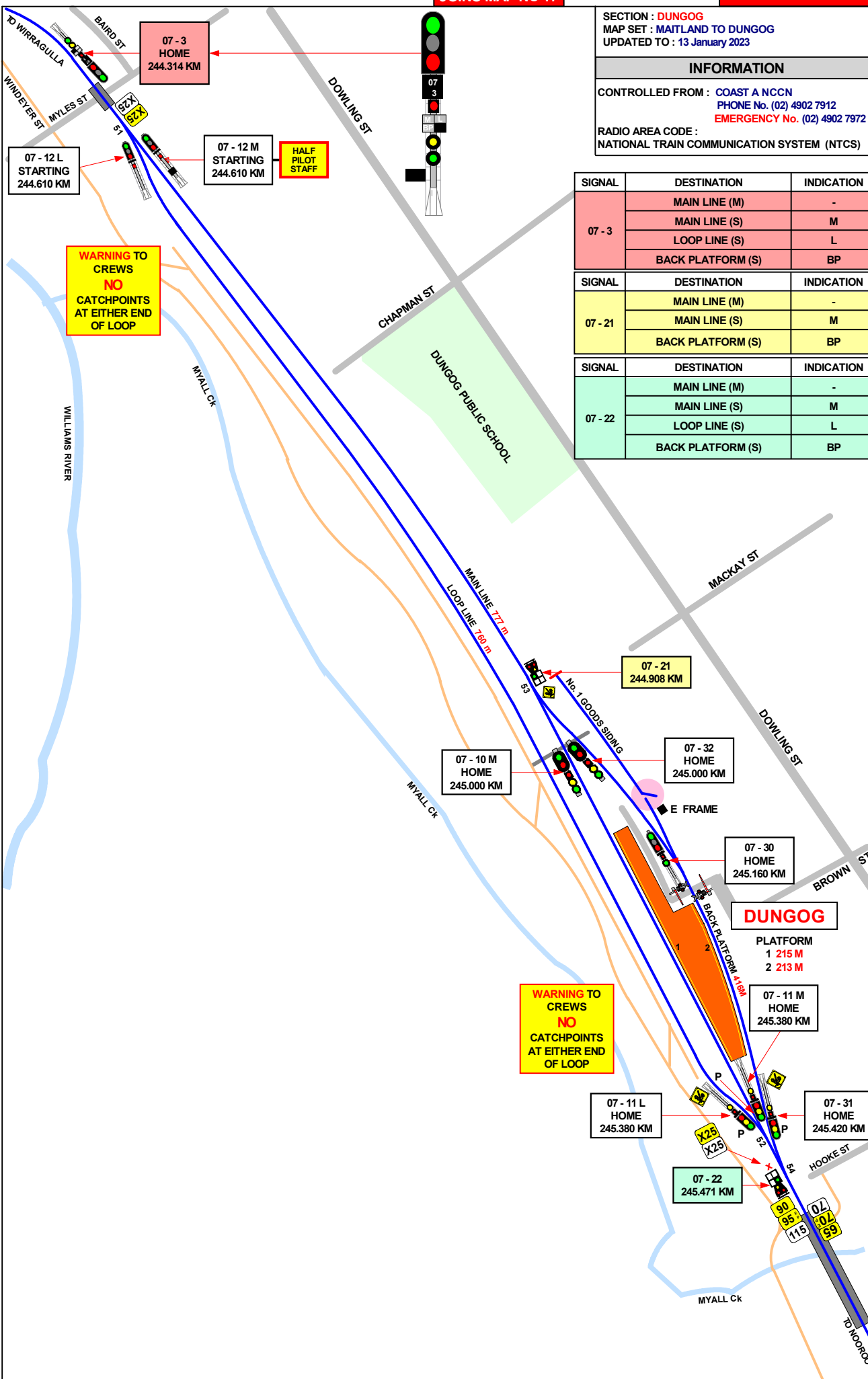
GRADIENT

SECTION : DUNGOG
MAP SET : MAITLAND TO DUNGOG
UPDATED TO : 13 January 2023

INFORMATION

CONTROLLED FROM : COAST A NCCN
PHONE No. (02) 4902 7912
EMERGENCY No. (02) 4902 7972
RADIO AREA CODE :
NATIONAL TRAIN COMMUNICATION SYSTEM (NTCS)

SIGNAL	DESTINATION	INDICATION
07 - 3	MAIN LINE (M)	-
	MAIN LINE (S)	M
	LOOP LINE (S)	L
	BACK PLATFORM (S)	BP
07 - 21	MAIN LINE (M)	-
	MAIN LINE (S)	M
	BACK PLATFORM (S)	BP
07 - 22	MAIN LINE (M)	-
	MAIN LINE (S)	M
	LOOP LINE (S)	L
	BACK PLATFORM (S)	BP



1 IN 264