

Worksite Protection Planning Diagrams

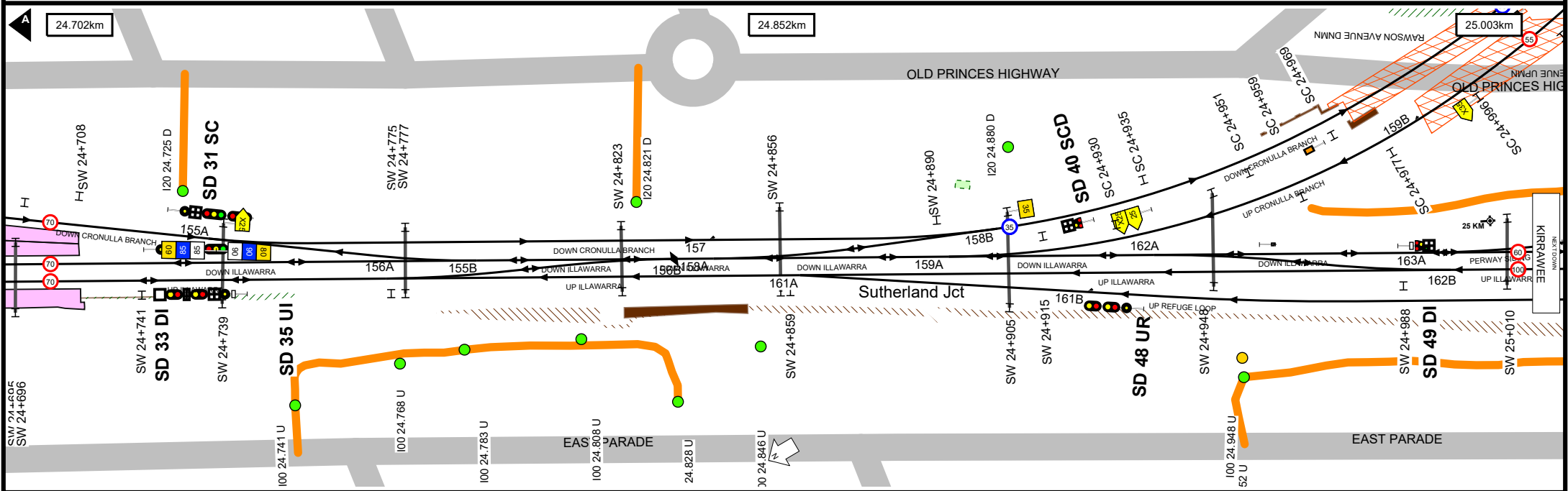
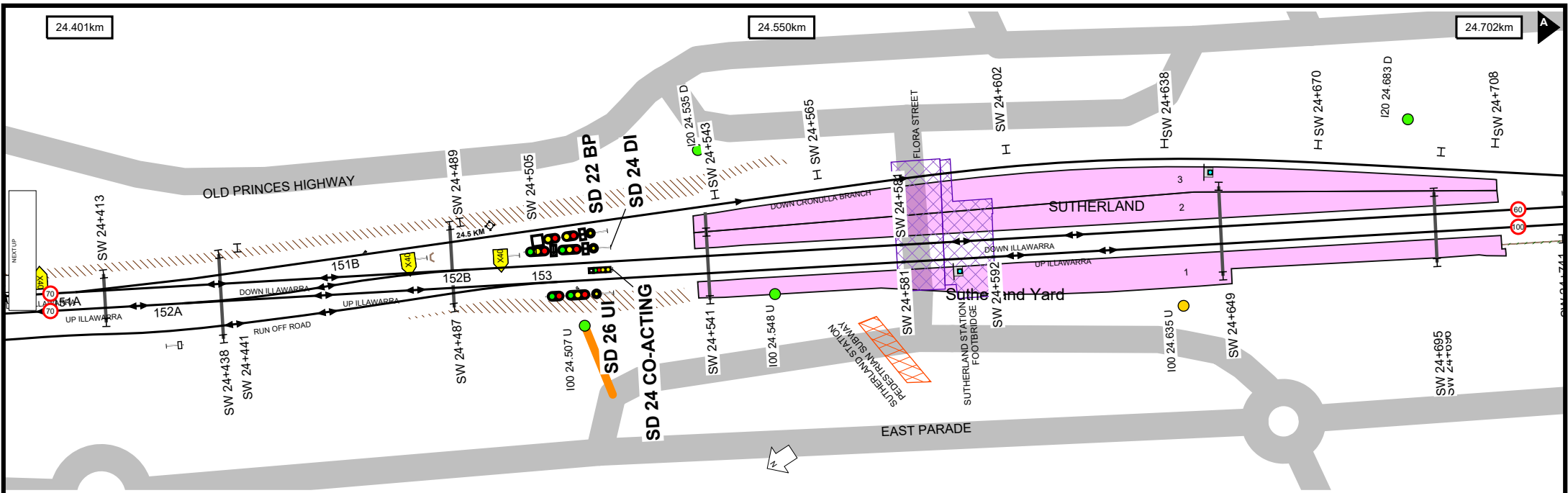
Illawarra Line - Sutherland to Cronulla - I20

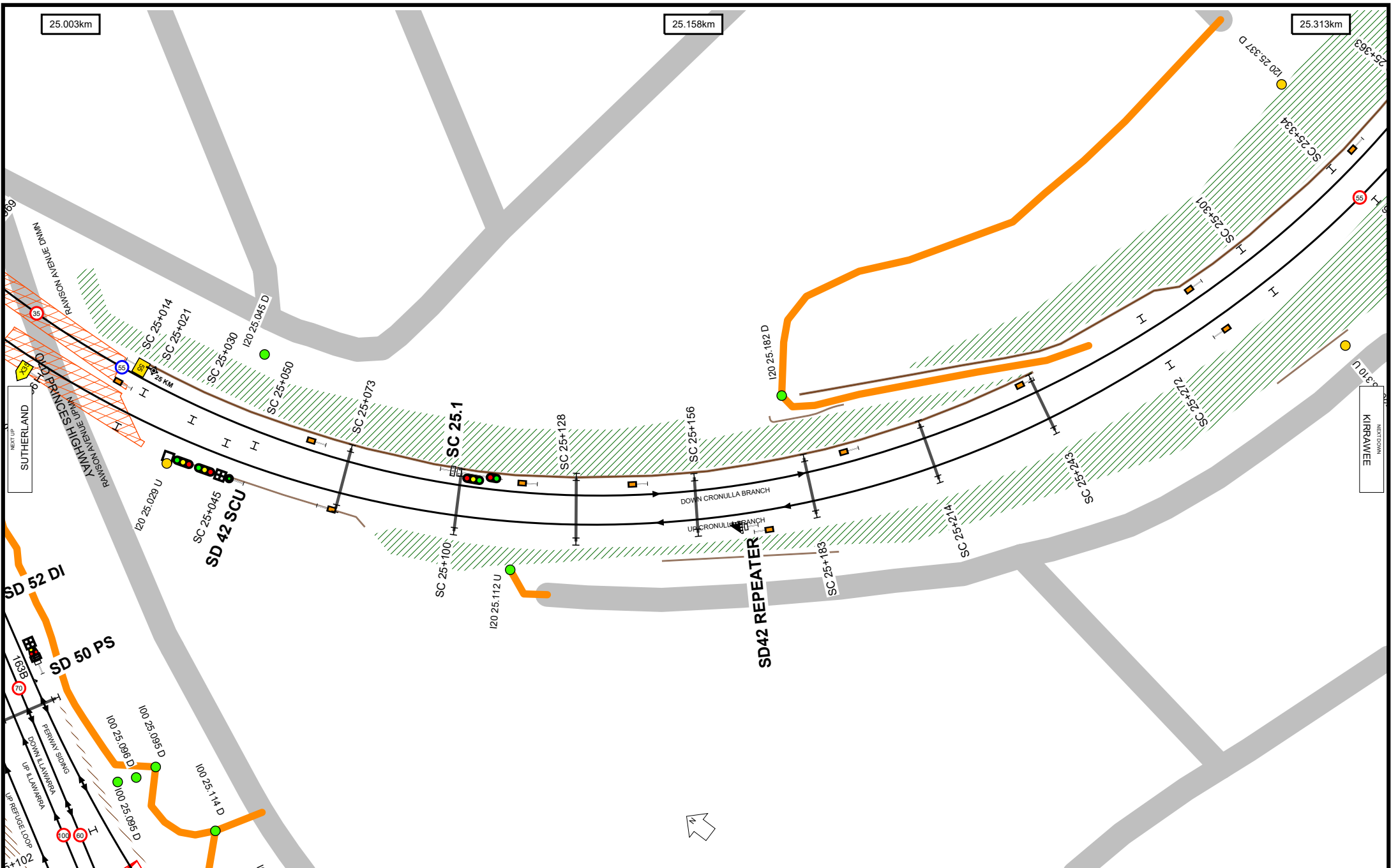
Stations Covered

SUTHERLAND	2
KIRRAWEE	6
GYMEA	8
MIRANDA	11
CARINGBAH	14
WOOLOOWARE	18
CRONULLA	20

Kilometrage References

24.401km	2
25.000km	2
30.000km	12
35.000km	20
35.261km	20

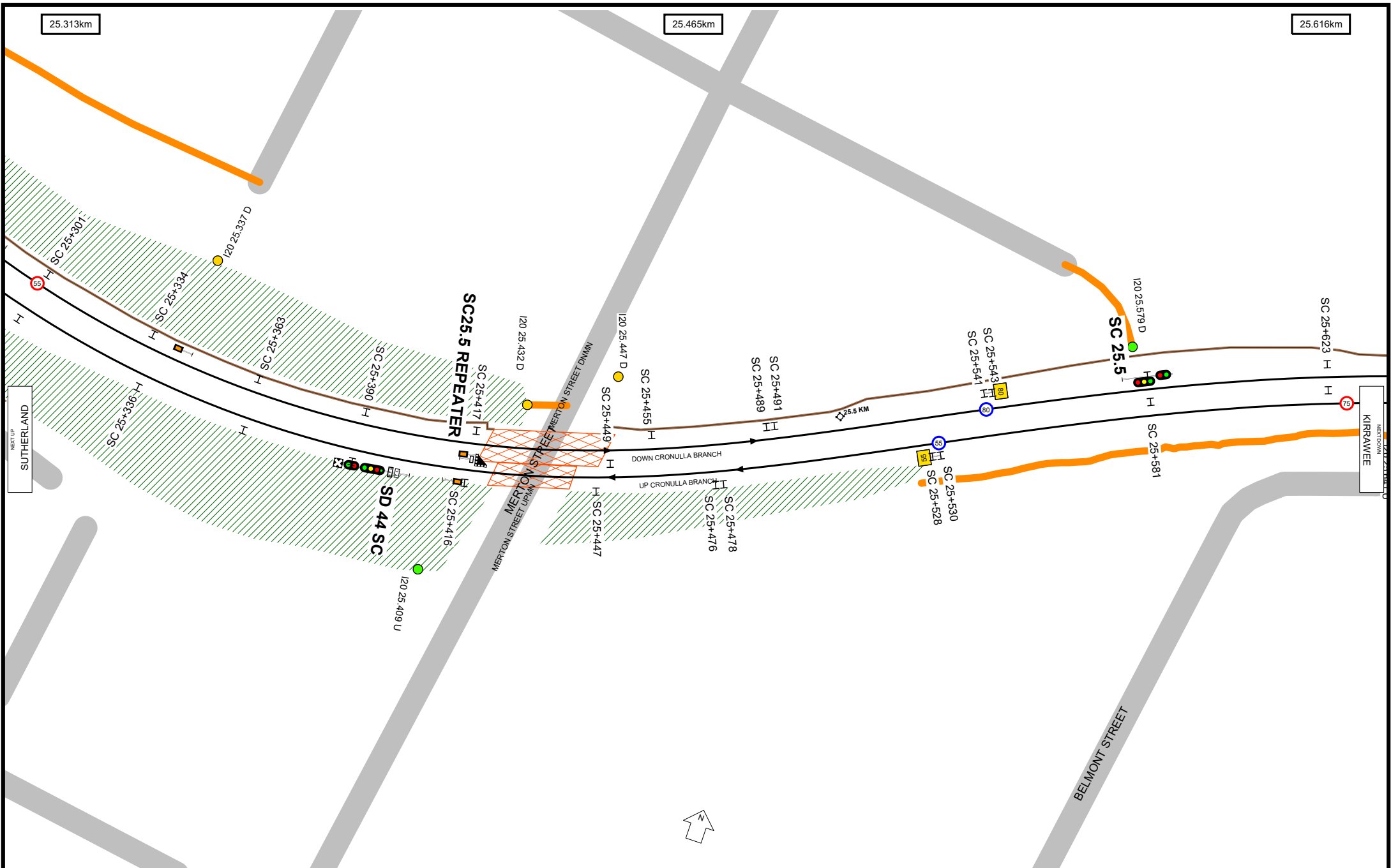




UNCONTROLLED WHEN PRINTED

Data shown here may not have been field verified.
 Do not use for operational purposes without checking against a controlled document.
 For data issues contact GIS.Support@transport.nsw.gov.au





Worksite Protection Planning Diagram
 Contact: rcsp@transport.nsw.gov.au



Transport for NSW

UNCONTROLLED WHEN PRINTED

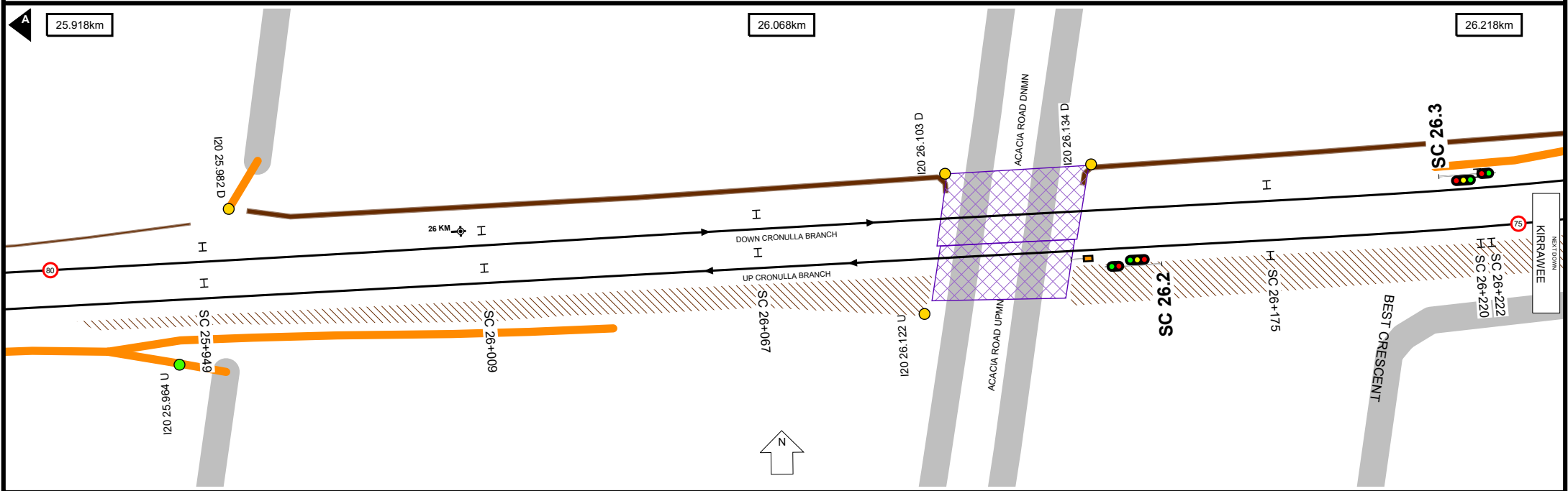
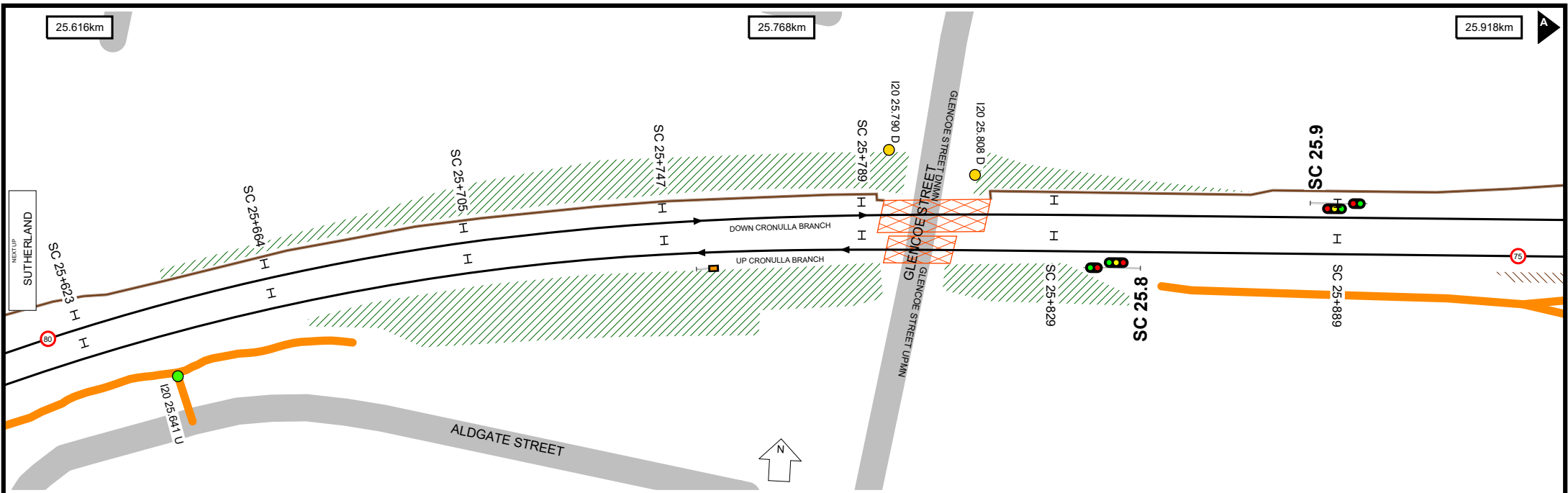
Data shown here may not have been field verified.
 Do not use for operational purposes without checking against a controlled document.
 For data issues contact GIS.Support@transport.nsw.gov.au

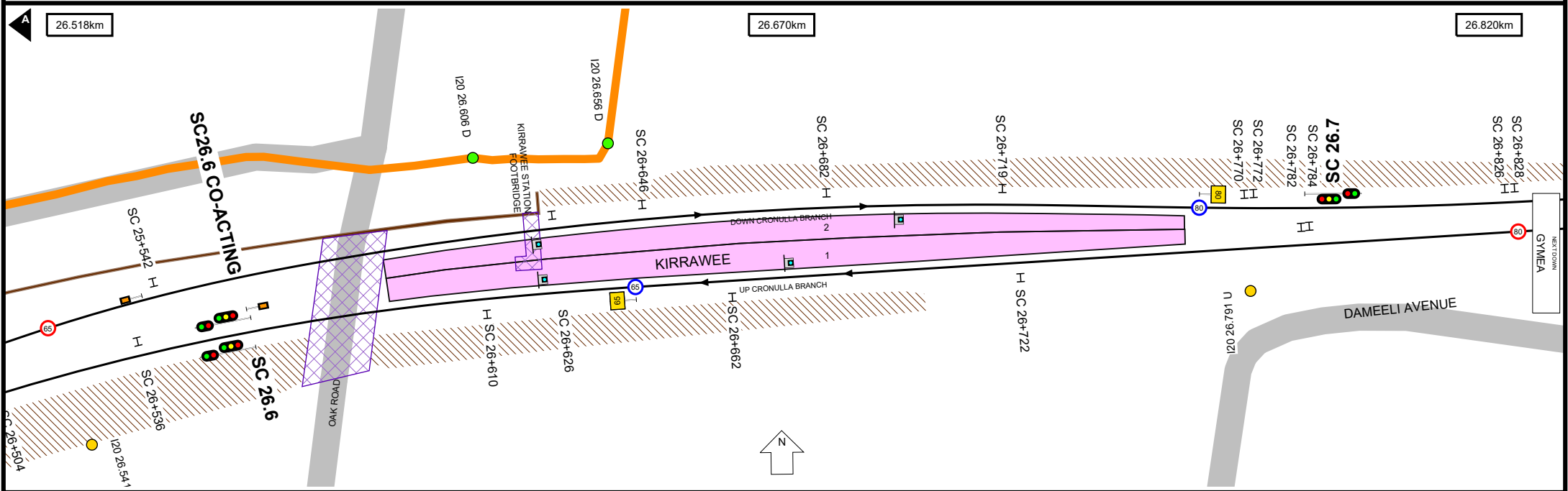
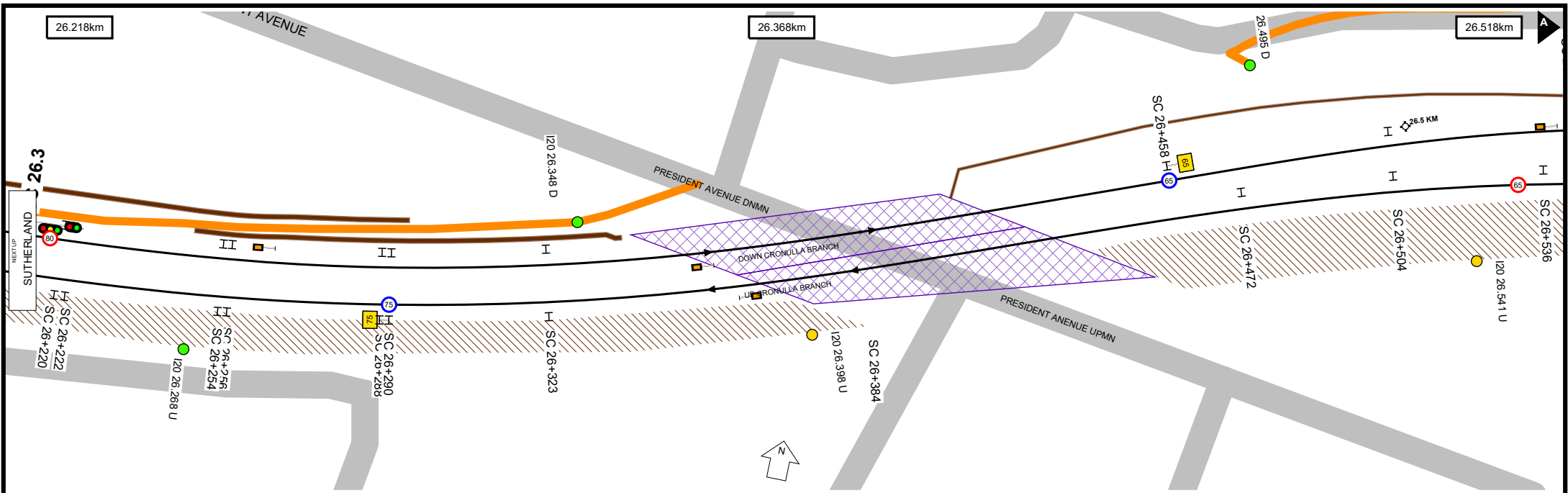
TITLE: **Illawarra Line - Sutherland to Cronulla - I20**
 Page range 25.313-25.616km

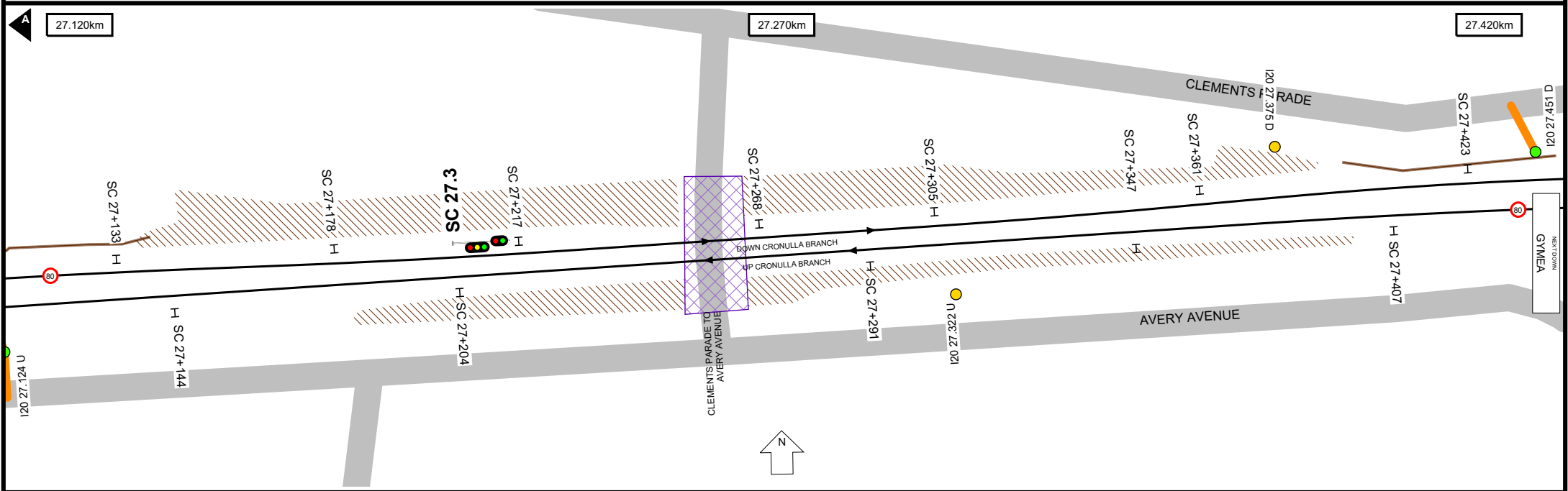
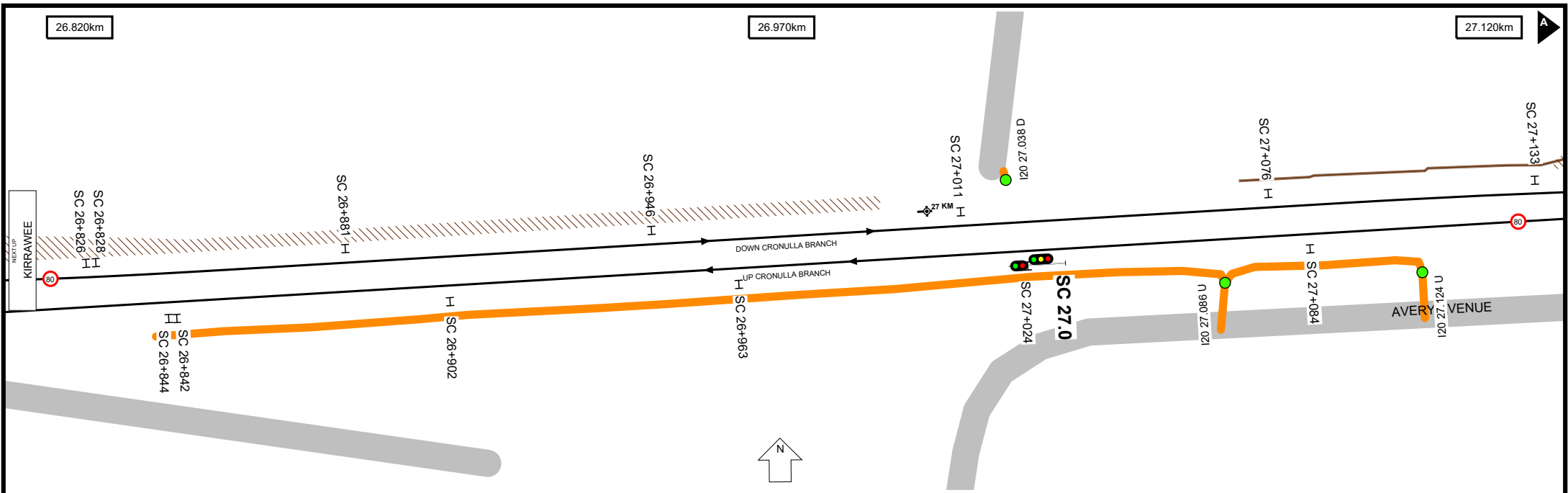
A4
 19/12/2023

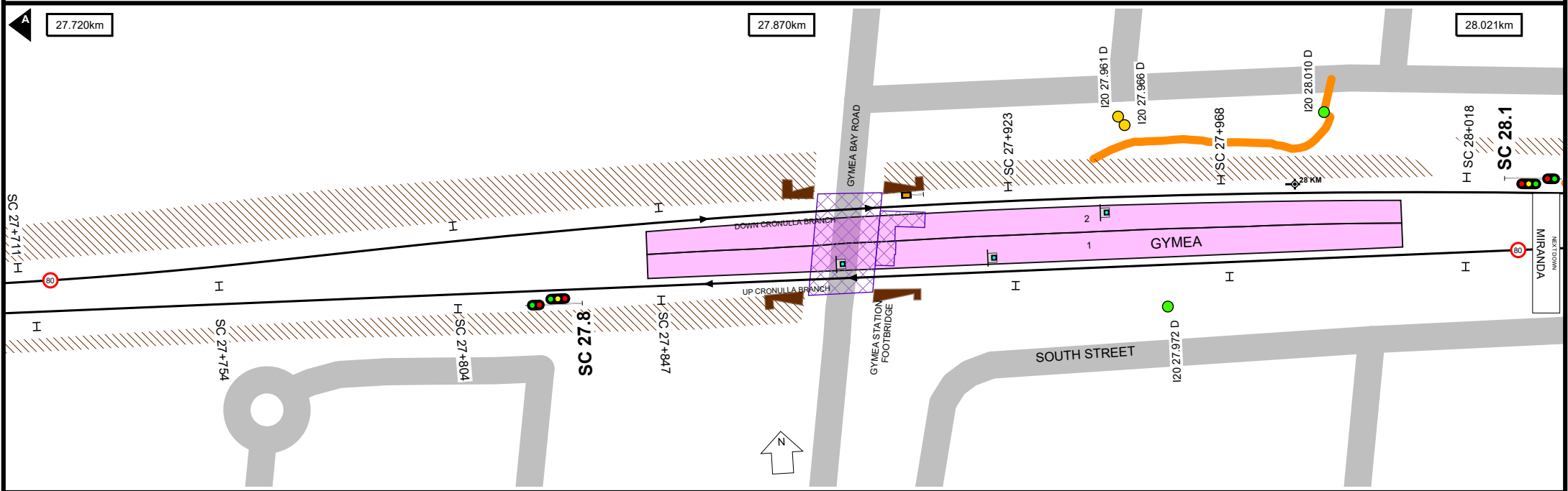
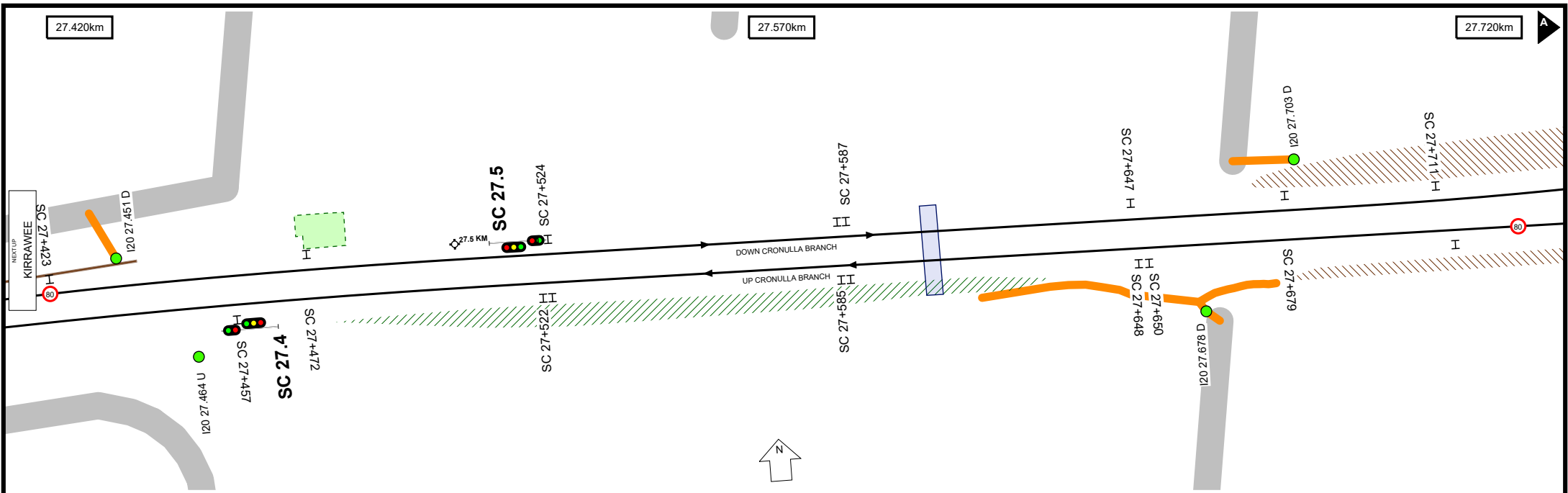


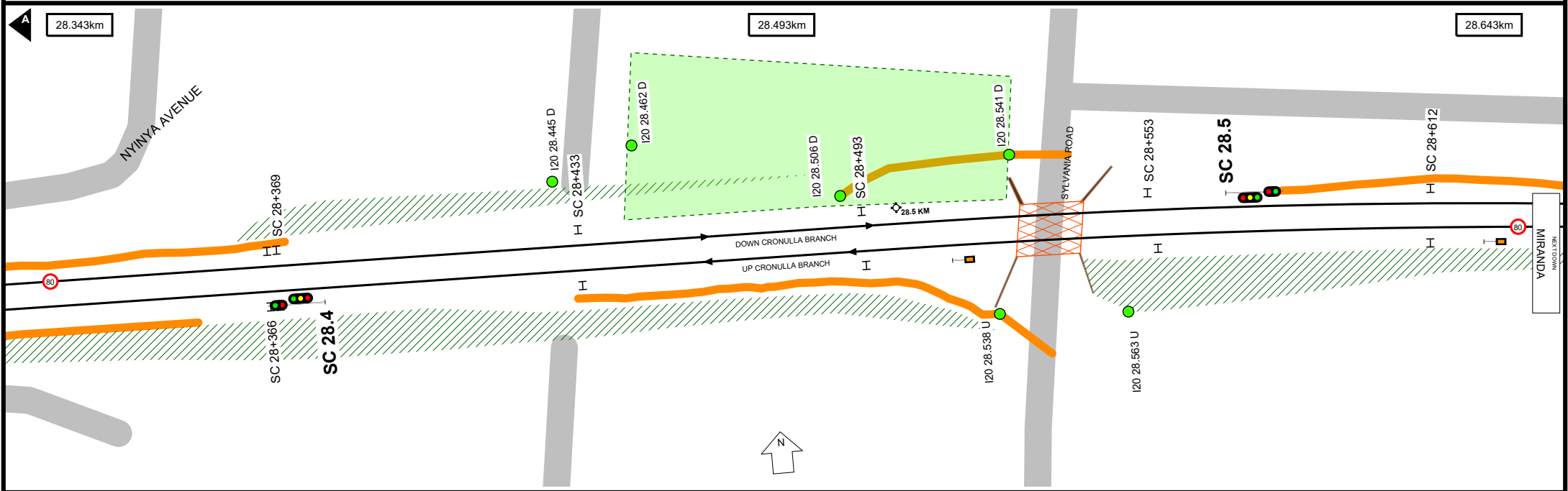
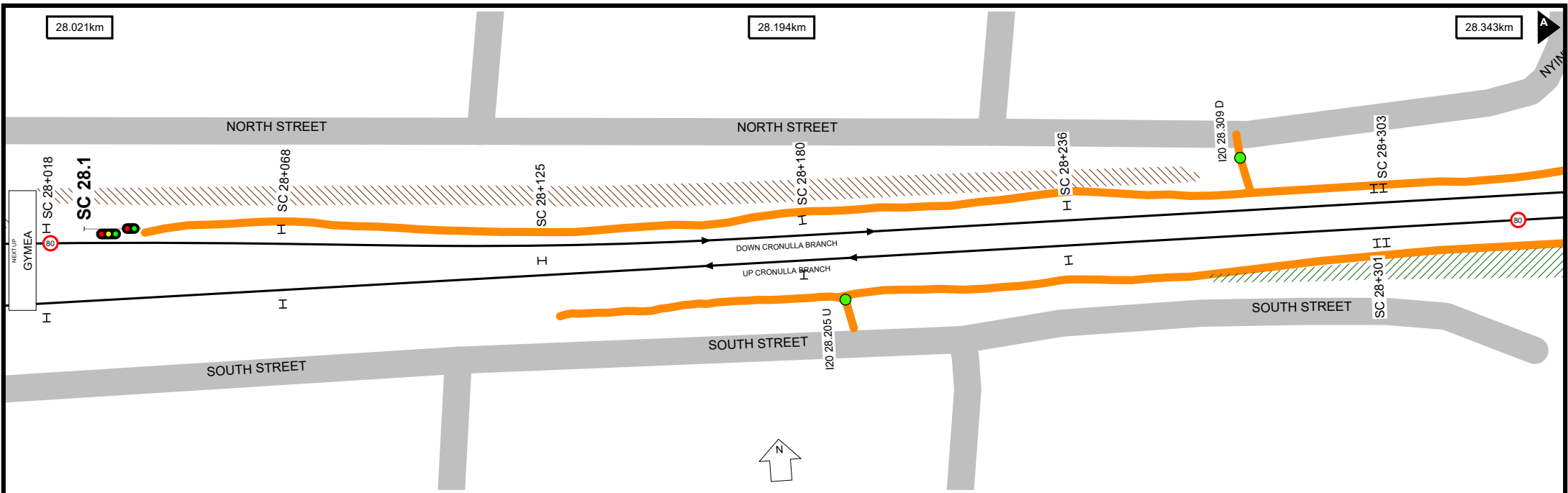
4

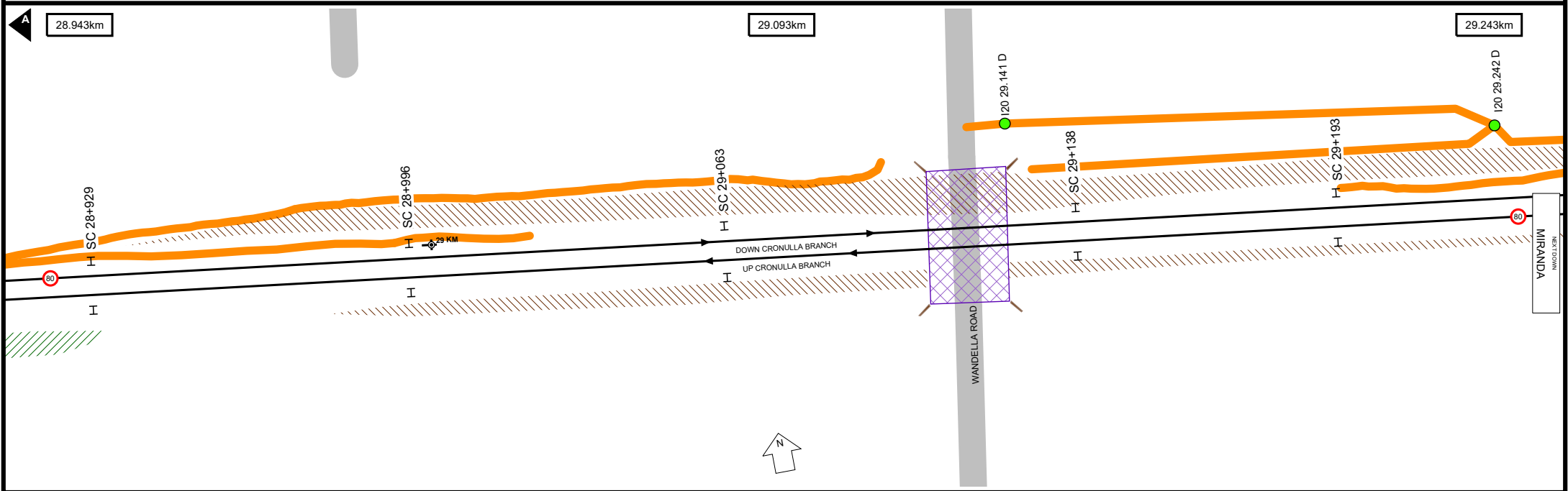
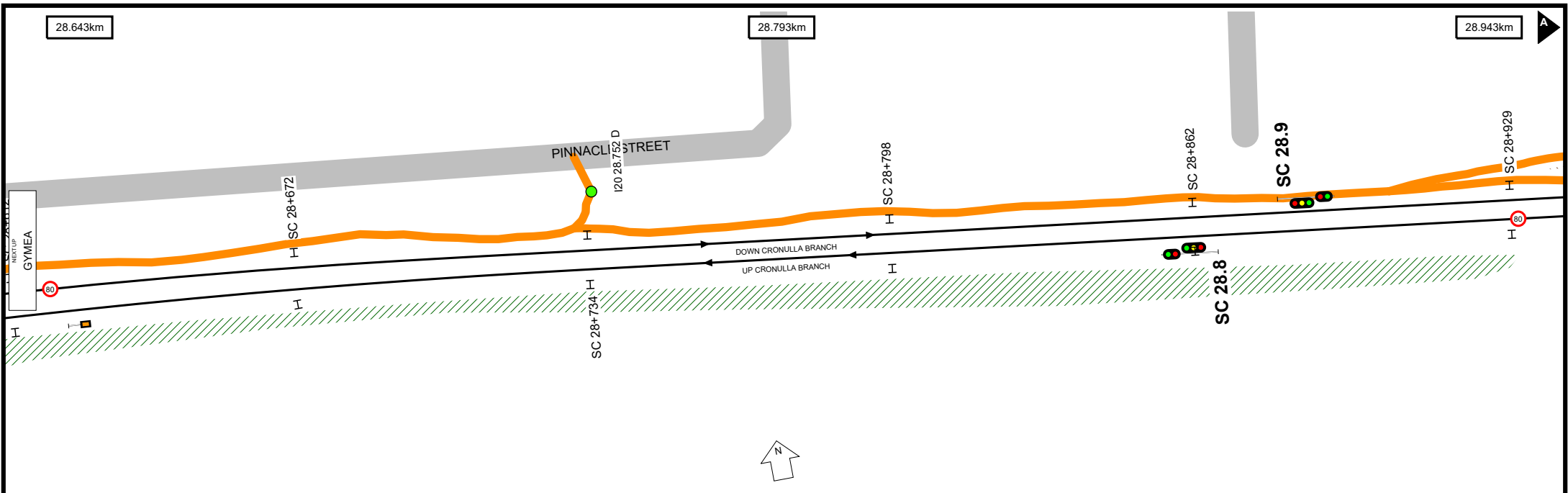


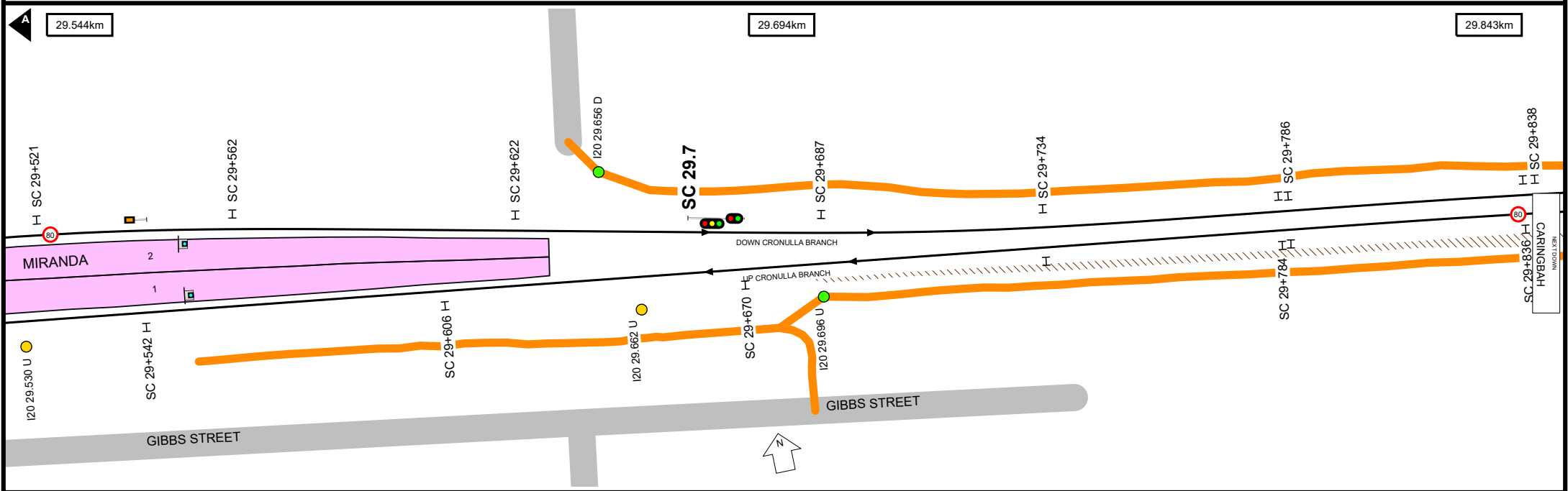
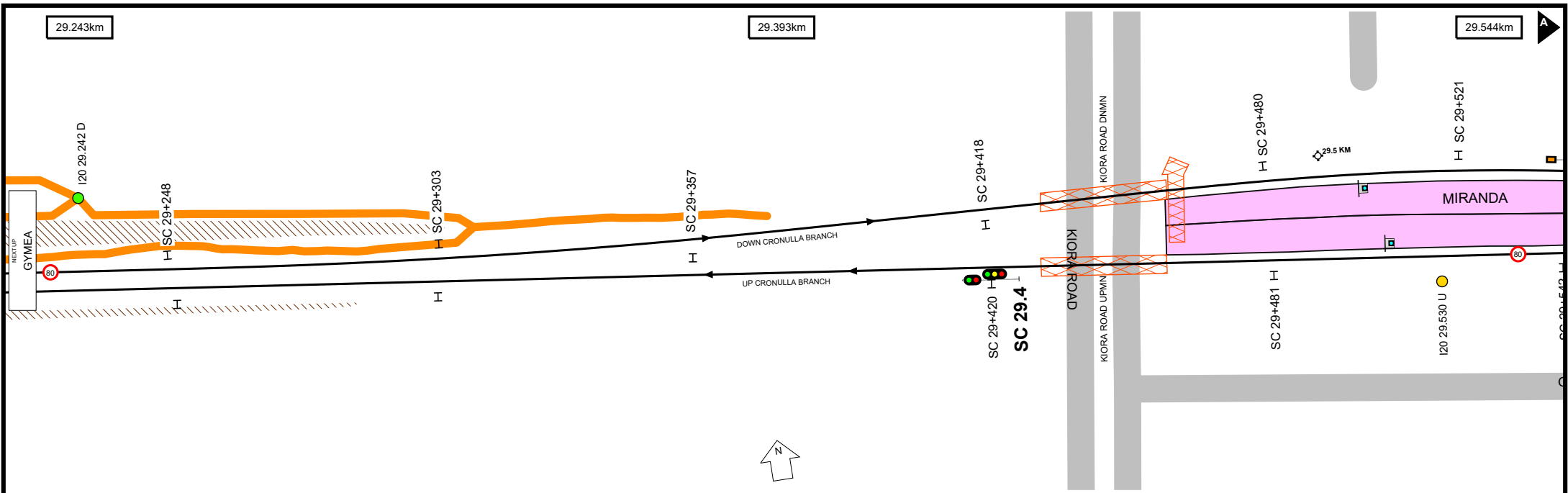


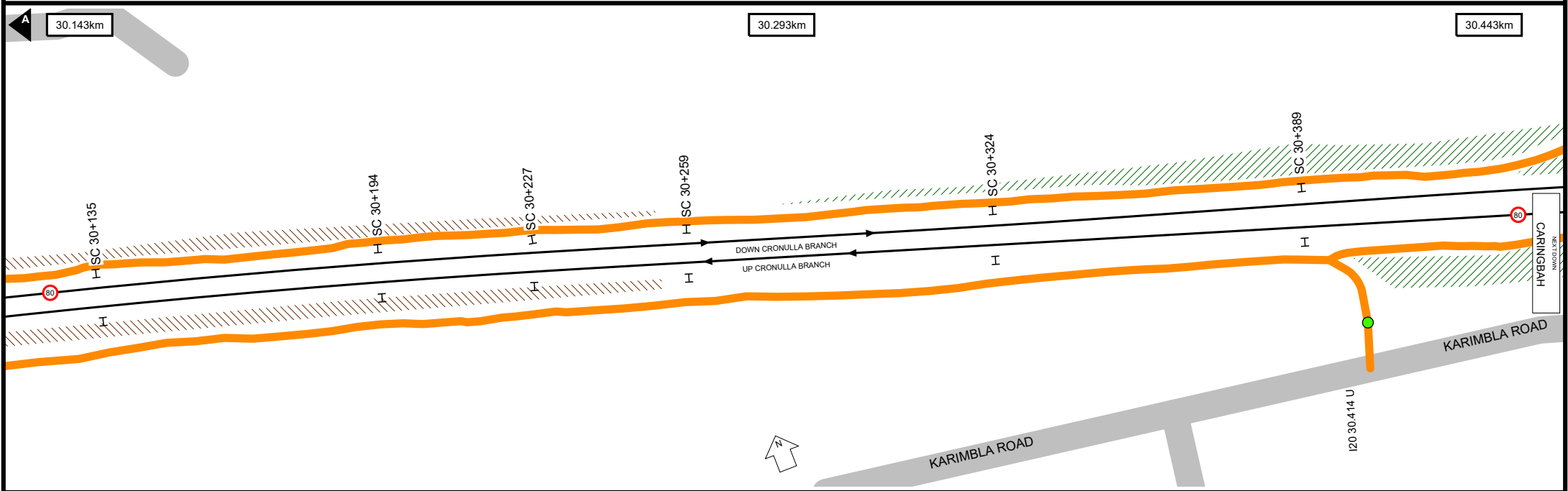
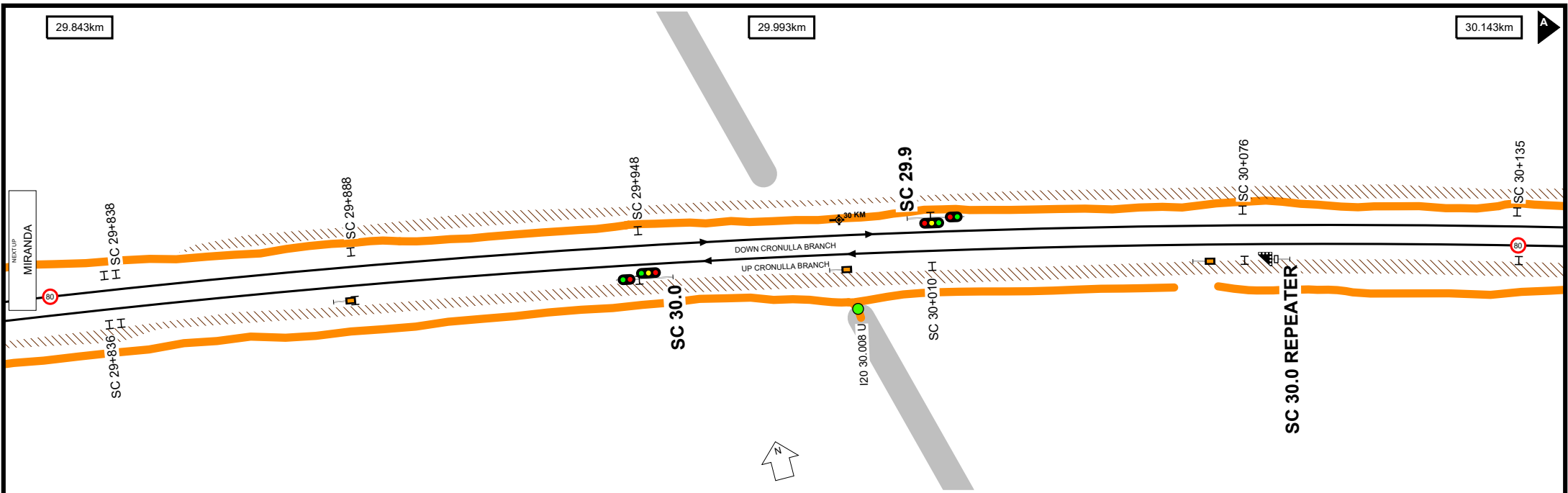


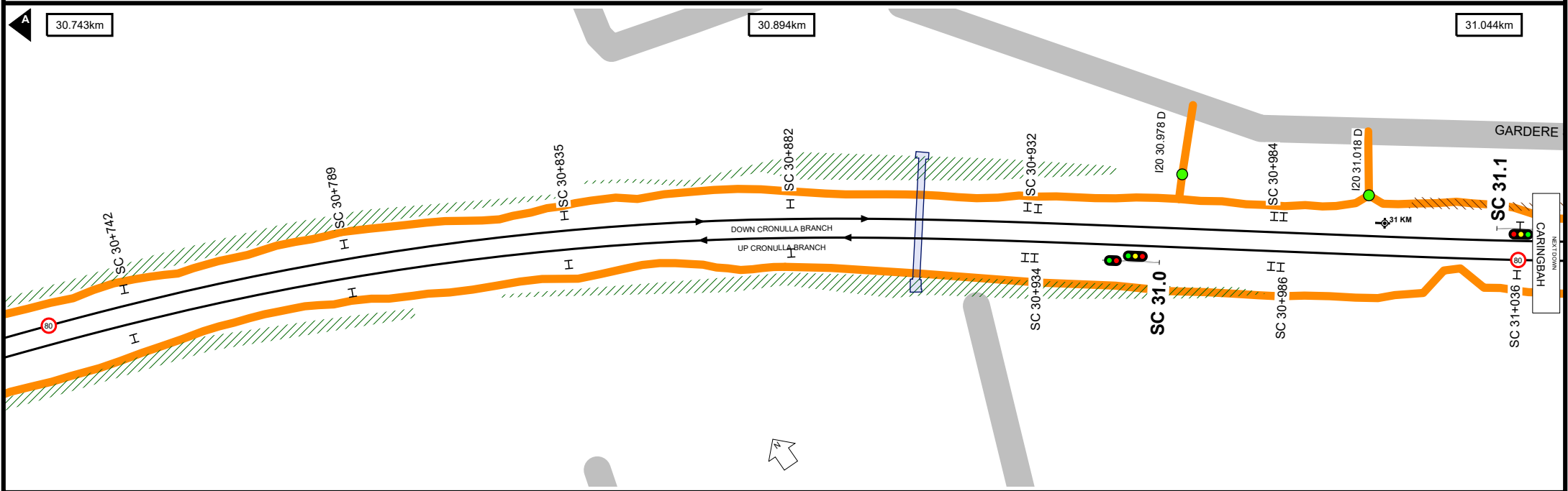
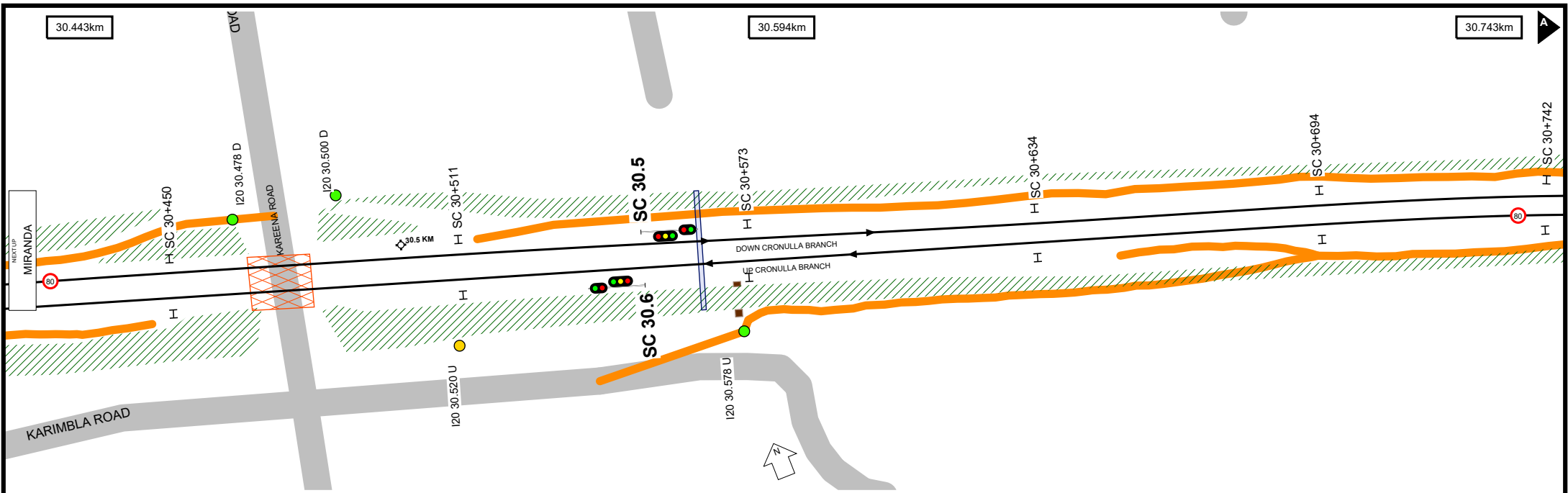


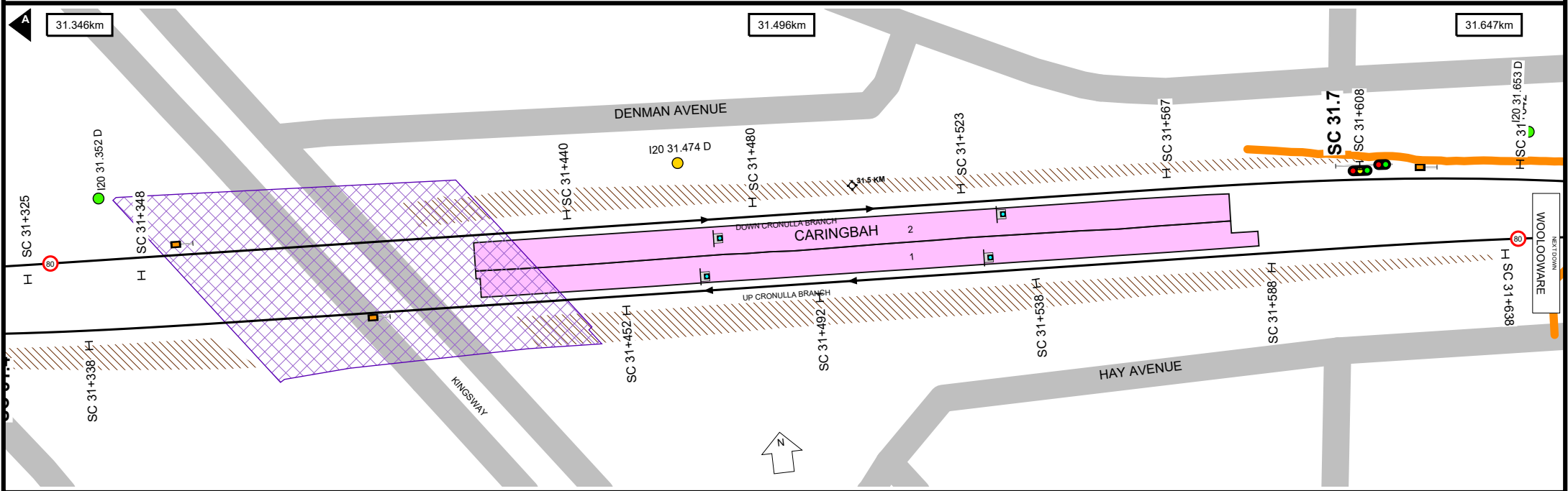
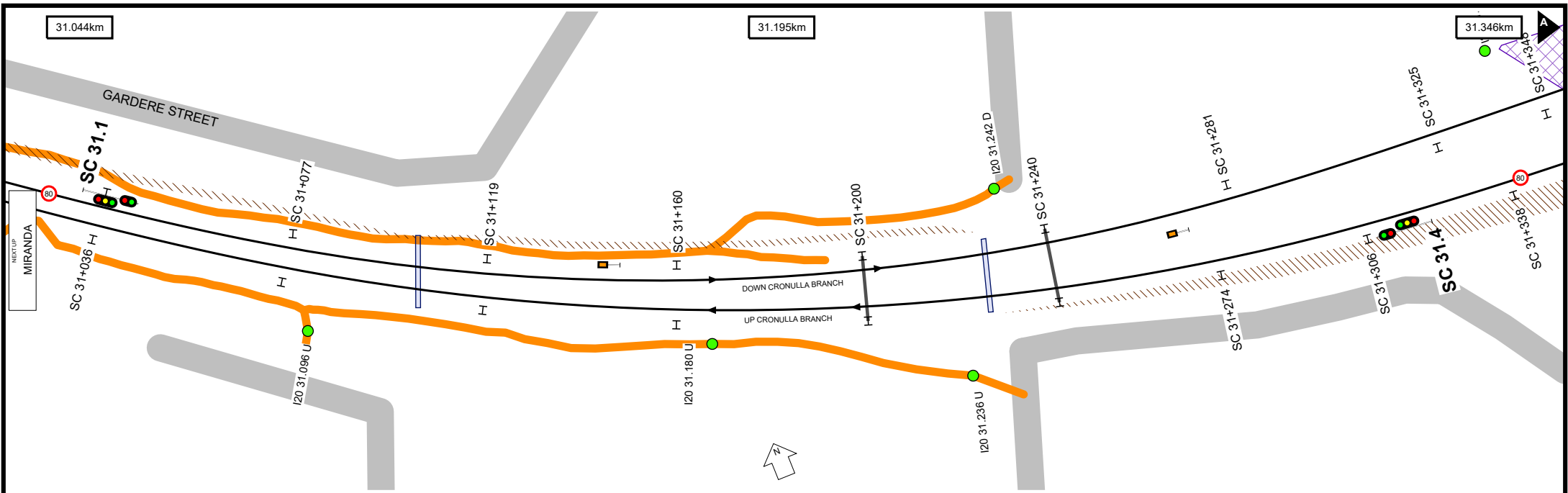


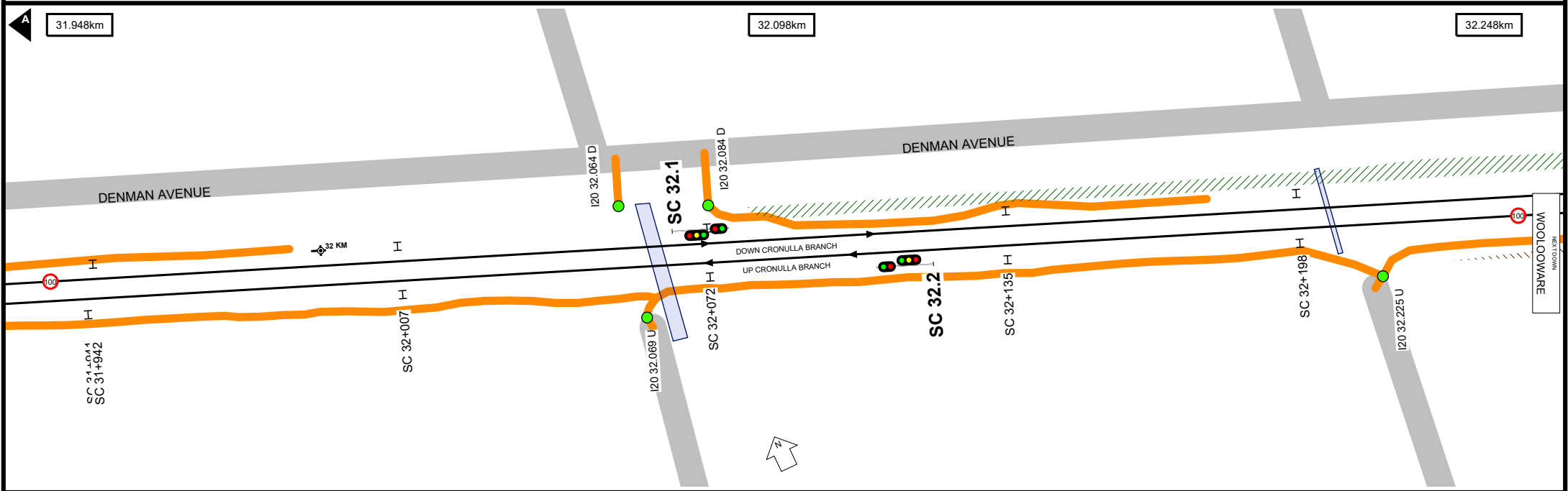
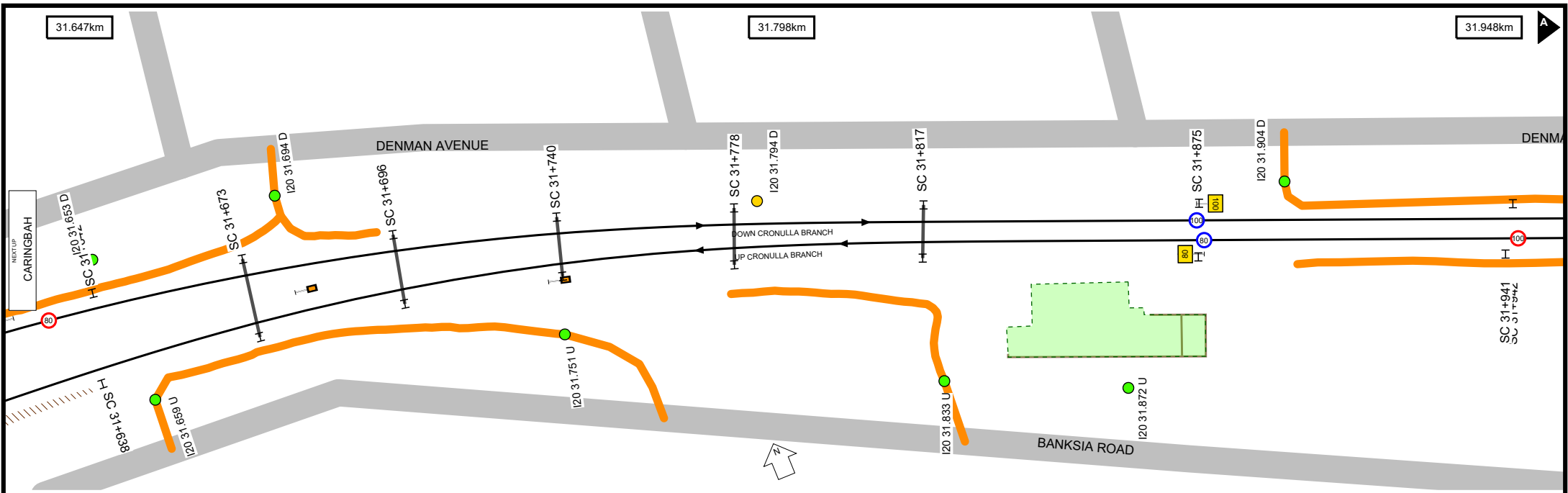


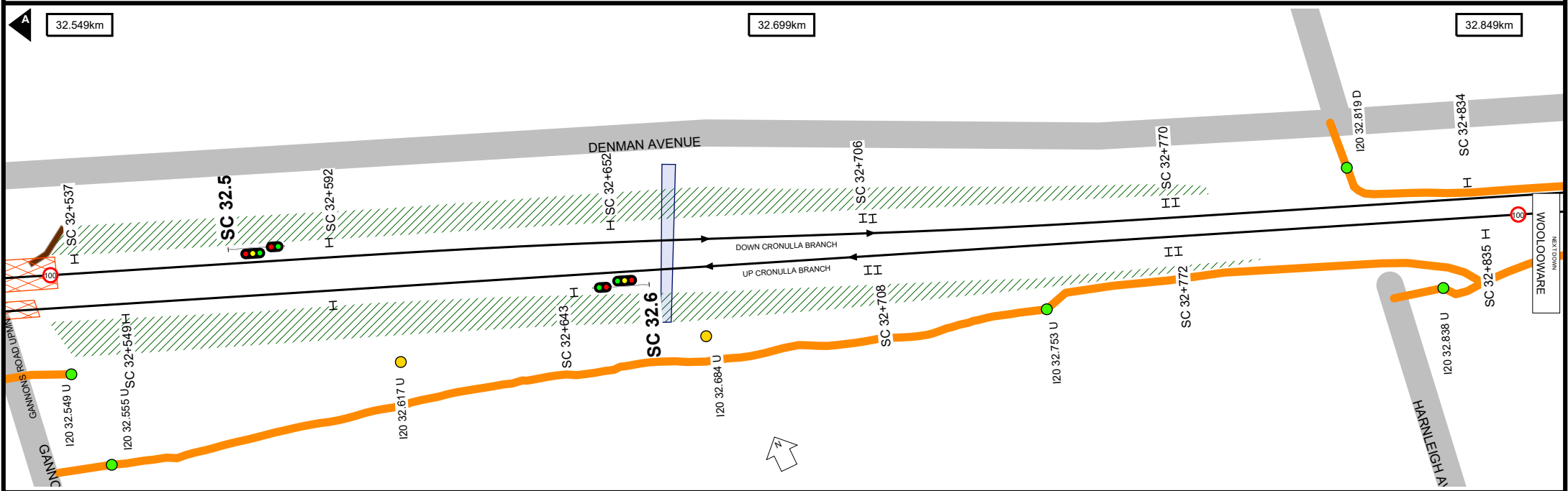
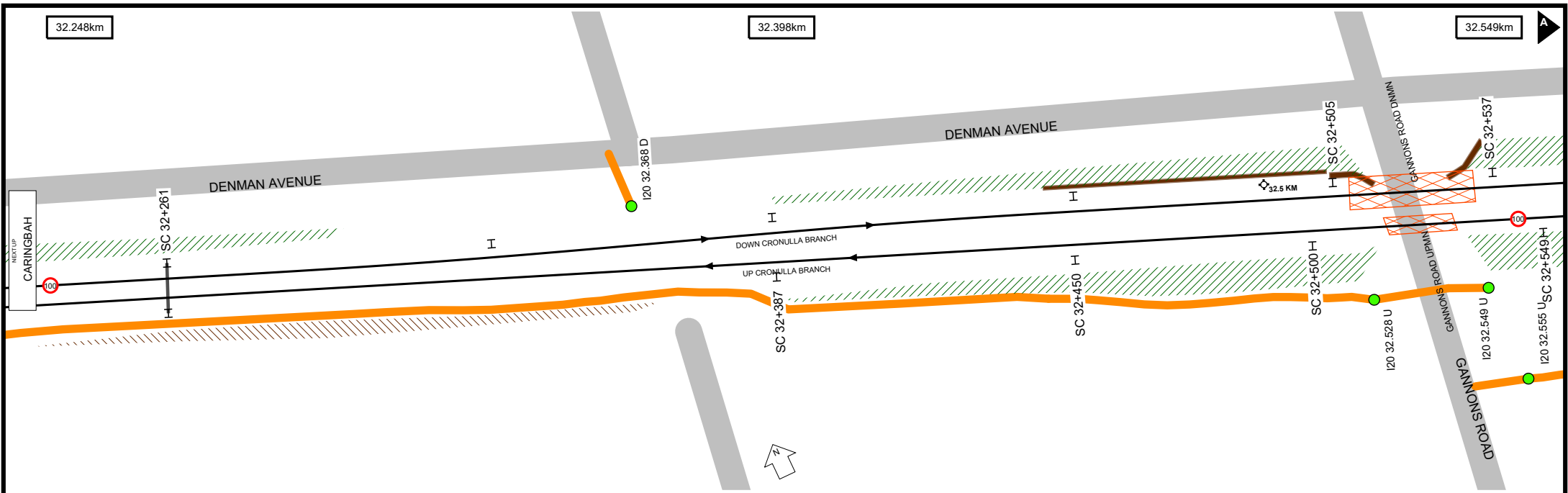


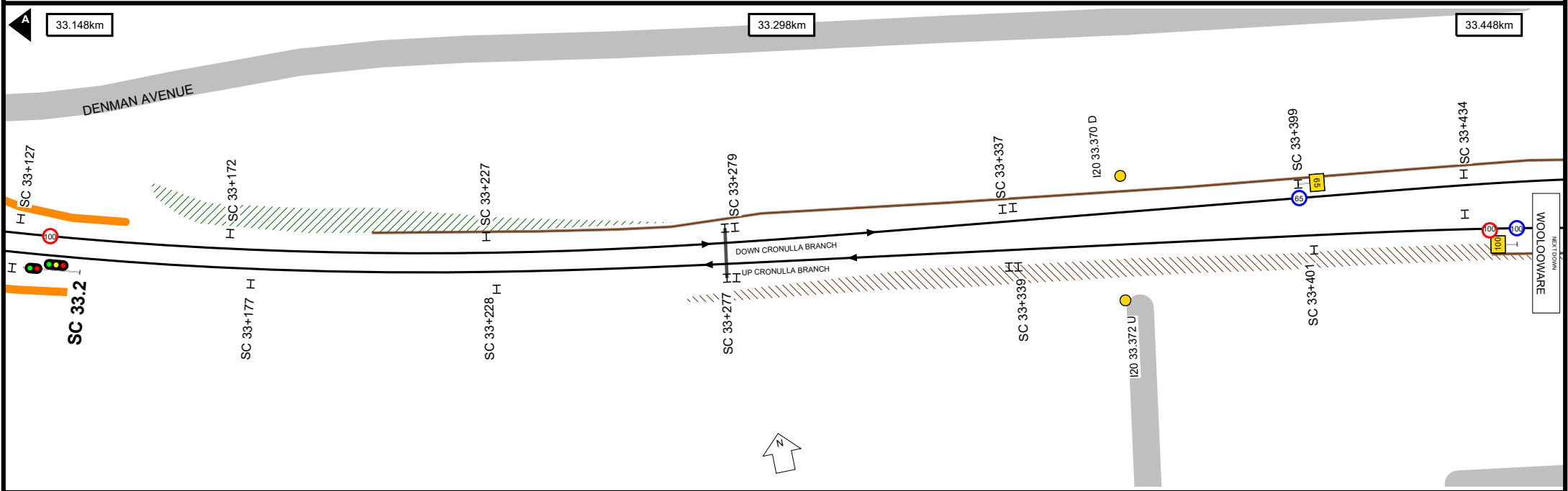
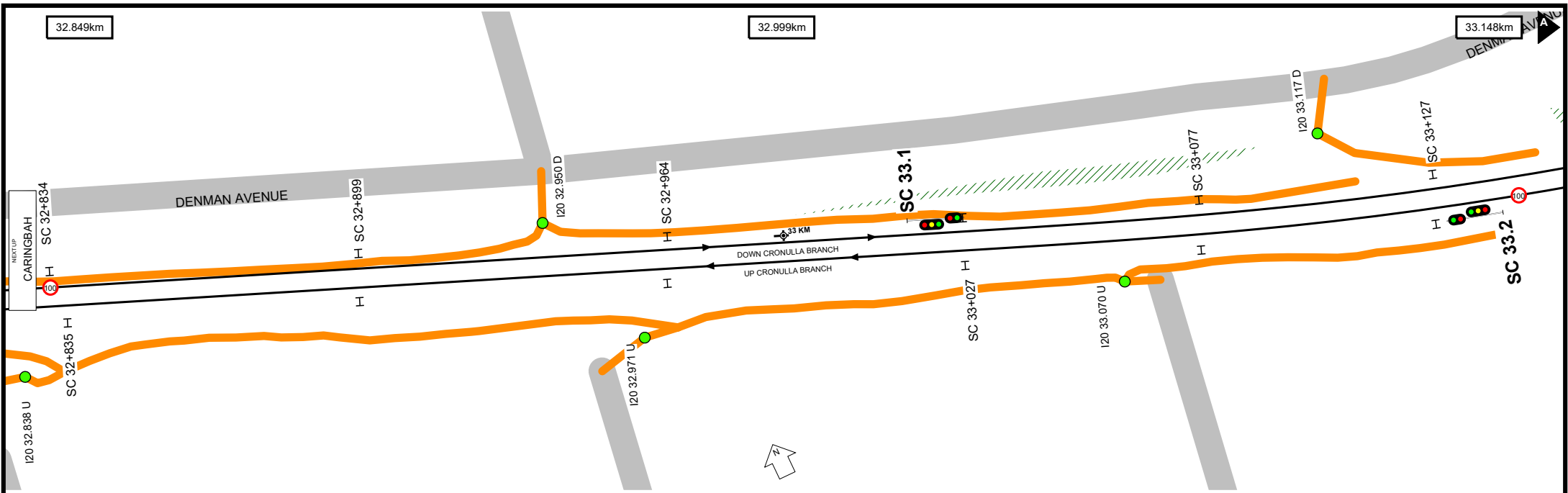


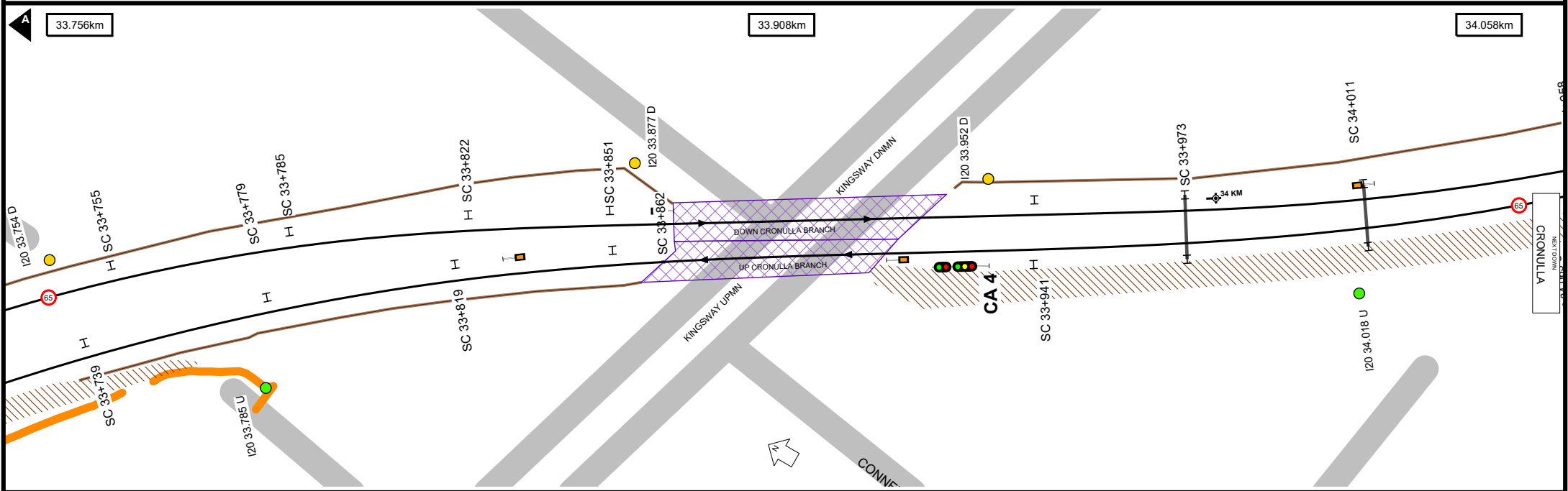
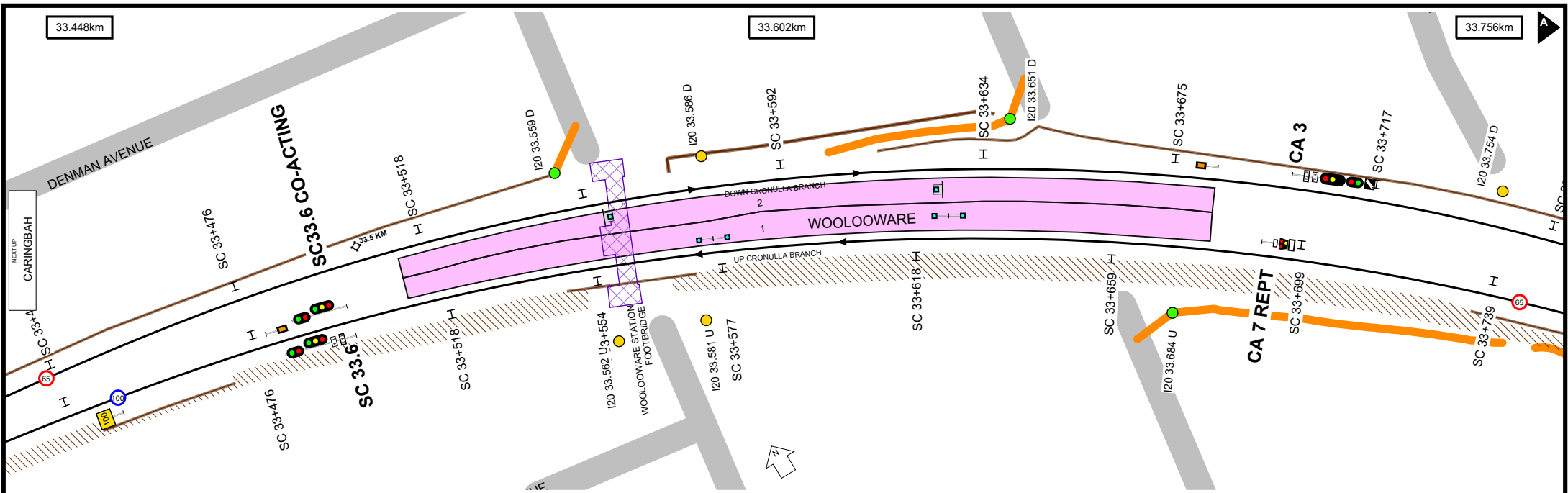












Worksite Protection Planning Diagram
 Contact: rcsp@transport.nsw.gov.au



Transport for NSW

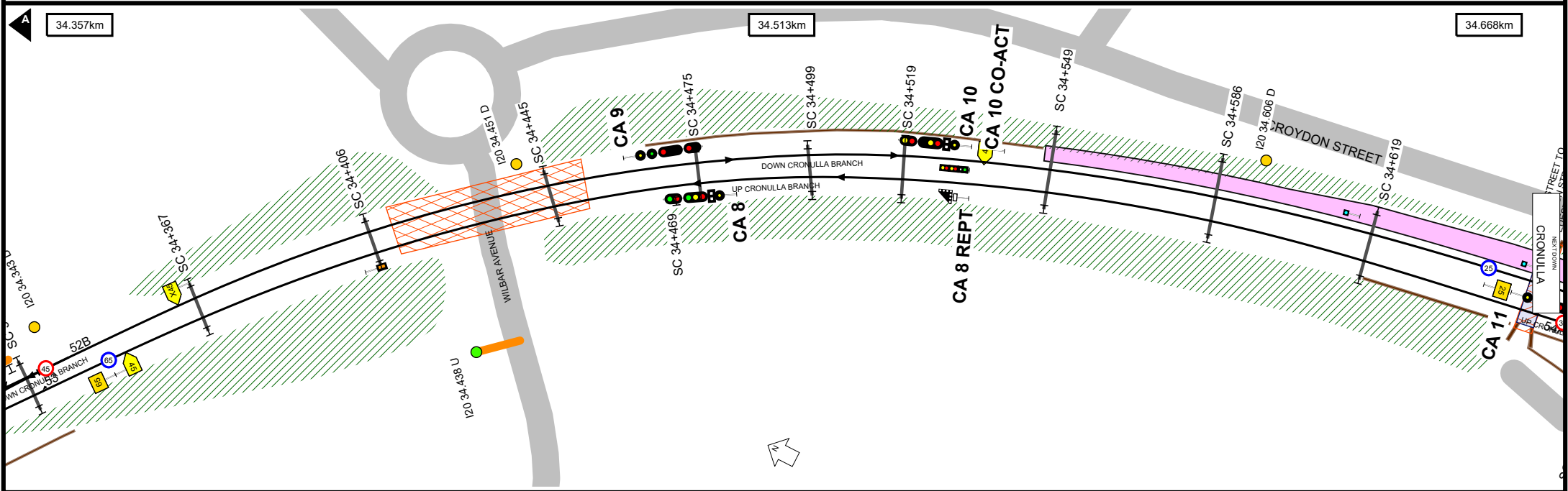
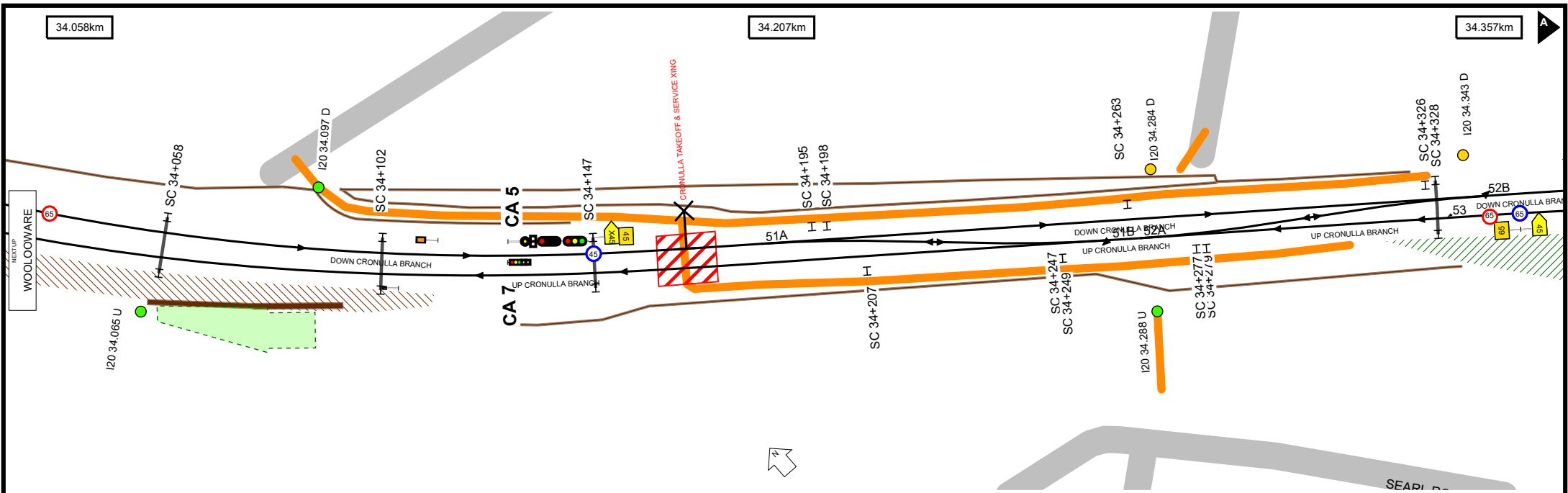
UNCONTROLLED WHEN PRINTED

Data shown here may not have been field verified.
 Do not use for operational purposes without checking against a controlled document.
 For data issues contact GIS.Support@transport.nsw.gov.au

TITLE: **Illawarra Line - Sutherland to Cronulla - I20**
 Page range 33.448-34.058km

SCALE: 

A4
 19/12/2023
 18



Worksite Protection Planning Diagram
 Contact: rcsp@transport.nsw.gov.au



Transport for NSW

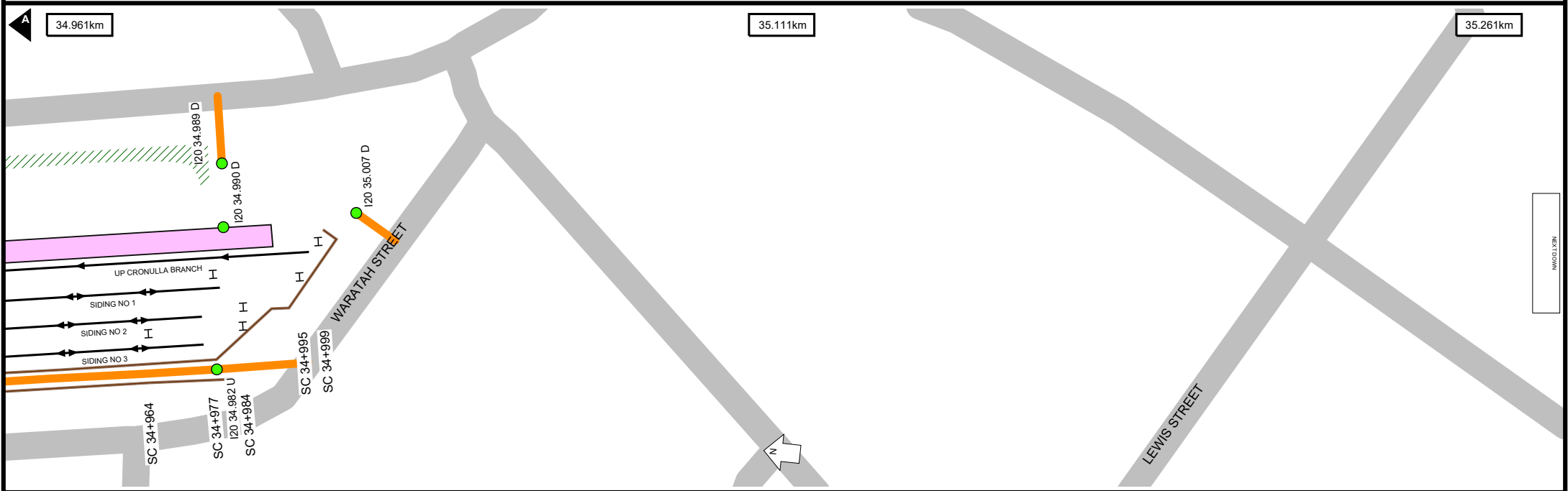
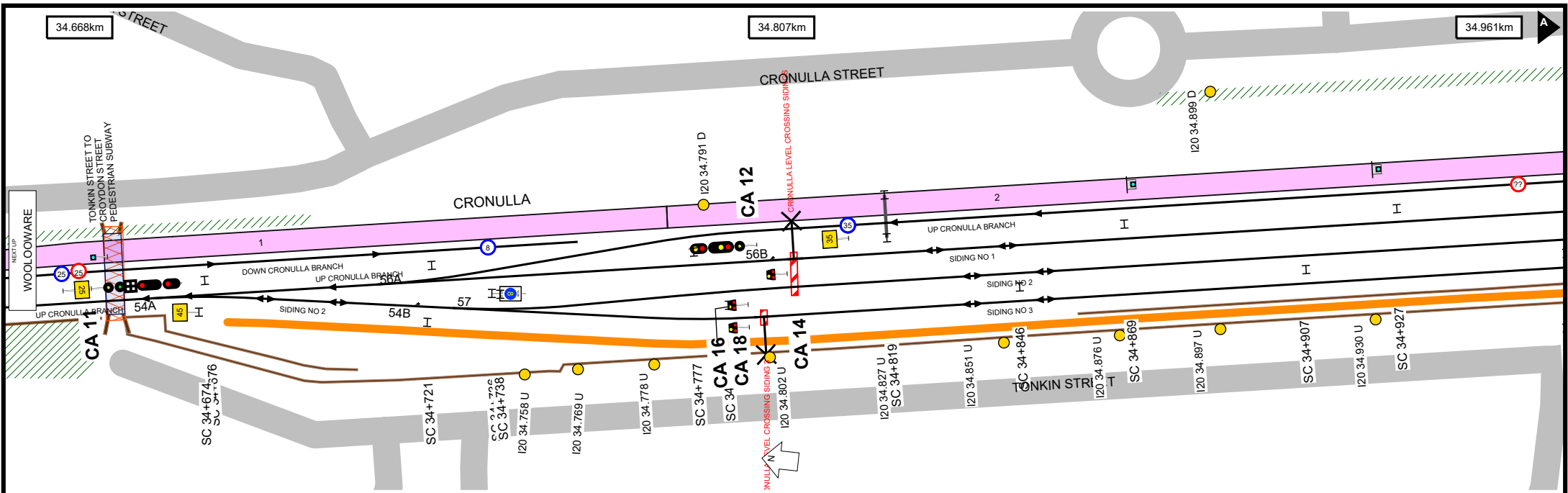
UNCONTROLLED WHEN PRINTED

Data shown here may not have been field verified.
 Do not use for operational purposes without checking against a controlled document.
 For data issues contact GIS.Support@transport.nsw.gov.au

TITLE: **Illawarra Line - Sutherland to Cronulla - I20**
 Page range 34.058-34.668km

SCALE: 

A4
 19/12/2023
 19










Location Index

CARINGBAH	14
CARINGBAH SUB STN	15
CARINGBAH TRACTION SUBSTATION	15
CRONULLA	20
GYMEA	8
GYMEA SCTN HUT	8
GYMEA TRACTION SUBSTATION	9
KIRRAWEE	6
MIRANDA	11
SUTHERLAND	2
SUTHERLAND JCT	2
SUTHERLAND YARD	2
WOOLLOOWARE	18

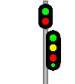




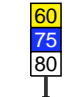
Bridge Index

ACACIA ROAD DNMN	5
ACACIA ROAD UPMN	5
CLEMENTS PARADE TO AVERY AVENUE	7
FLORA STREET	2
GANNONS ROAD DNMN	16
GANNONS ROAD UPMN	16
GLENCOE STREET DNMN	5
GLENCOE STREET UPMN	5
GYMEA BAY ROAD	8
GYMEA STATION FOOTBRIDGE	8
KAREENA ROAD	13
KINGSWAY	14
KINGSWAY DNMN	18
KINGSWAY UPMN	18
KIORA ROAD DNMN	11
KIORA ROAD UPMN	11
KIRRAWEE STATION FOOTBRIDGE	6
MERTON STREET DNMN	4
MERTON STREET UPMN	4
MIRANDA STATION PEDESTRIAN SUBWAY	11
OAK ROAD	6
PRESIDENT AVENUE UPMN	6
PRESIDENT AVENUE DNMN	6
RAWSON AVENUE DNMN	2
RAWSON AVENUE UPMN	2
SUTHERLAND STATION FOOTBRIDGE	2
SUTHERLAND STATION PEDESTRIAN SUBWAY	2
SYLVANIA ROAD	9
TONKIN STREET TO CROYDON STREET PEDESTRIAN SUBWAY	19
WANDELLA ROAD	10
WILBAR AVENUE	19
WOOLOOWARE STATION FOOTBRIDGE	18

Track & Point

-  Existing Track Centreline
-  Under Construction / Service Withdrawn
-  Proposed Track
-  Turnout Point
-  Catch Point
-  Derail Point
-  Turntable



Signal & Sign

-  Signal
-  Warning Light
-  Warning Light - Double
-  End Yard Limit Sign
-  Yard Limit Sign
-  Speed Sign




Station

-  Platform

Kilometre Post

-  Whole Kilometre Post
-  Half Kilometre Post

Corridor Access

-  Access Gate
-  Pedestrian Access Gate
-  Access Road


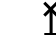
Safety

-  Refuge







Road

-  Public Road

Level Crossing & Take Off

-  Level Crossing Boundary
-  Level Crossing Location


Bridge

-  Overbridge
-  Underbridge
-  Rail Flyover
-  Rail Dive
-  Pedestrian Footbridge
-  Pedestrian Subway

Tunnel

-  Tunnel Section Coverage

Embankment

-  Embankment

Cutting

-  Cutting

Wall

-  Wall

Culvert

-  Culvert

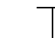


Waterway

-  Waterway

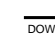





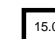
Substation

-  Substation Boundary

Overhead Wiring Structure

-  OHWS
-  OHWS Centreline
-  Wood Pole

Additional Map Features

-  Track Name & Direction Indicator
-  Maximum Train Entry Speed Indicator
-  Maximum Train Speed Change Indicator
-  Kilometrage Reference Indicator
-  Map Strip Join Indicator
-  Next Station Up
-  Next Station Down