

Lookout Working Worksite Protection for Broadmeadow Yard routine network maintenance activities

DOCUMENT NO.	D2022/1423
WORK DESCRIPTION	Routine network maintenance activities
WPP Number	CC7B 10001
SCOPE:	<p>This SWI is applicable for the worksite protection arrangements using lookout working concerning routine network maintenance, defect management and repair of assets within the limits specified below and in the attached plan.</p> <p>Work activities include:</p> <ul style="list-style-type: none"> Routine preventative and corrective work such as inspections and maintenance as appropriate for the type of protection being applied as part of this plan.
AUTHORISATIONS:	<p>Protection Officer: Protection Officer Level 1 or higher Lookout: Engineering Hand signaller Level 1 or higher or Protection Officer Level 1 or higher.</p>
SAFETY CONTROLS: Lookout working arrangements	<p>The nominated worksite location for Lookout Working includes the</p> <ul style="list-style-type: none"> Up and Down Main lines Up and Down Relief lines Up and Down Through lines Up and Down Sidings 1 to 8 Decant Sidings Storage / Sidings / Entry / Exit Roads Lambton Road Under Bridge Endeavor Centre <p>The nominated worksite location for Lookout Working is a moving worksite, where workers are working along the track within the limits of the nominated worksite location up to the where the Lookout is established.</p> <p>As work moves along the track, the Protection Officer must assess the new location and:</p> <ul style="list-style-type: none"> Establish and/or re-establish Lookouts as required to watch for approaching rail traffic from all entry points Designate and instruct which safe places the workers are to use as the work is completed along the work route within the worksite limits.
PRESTART REQUIREMENTS:	<p>Protection Officer assessment checklist must be completed before instructions in this SWI are followed. Tools and equipment required:</p> <ul style="list-style-type: none"> Protection Officer requires a phone to contact the Signaller. Lookouts require a high-visibility arm sleeve and a whistle/horn.
FURTHER INFORMATION:	<p><i>NWT 300 Planning work in the Rail Corridor</i></p> <p><i>NWT 310 Lookout Working</i></p> <p><i>NPR 711 Using Lookouts</i></p> <p><i>NPR 751 Calculating Minimum Warning Time</i></p> <p><i>NPR 712 Protecting work from rail traffic on adjacent lines</i></p> <p><i>NGE 200 Walking in the Danger Zone</i></p> <p><i>NLA 314 Gosford - Broadmeadow</i></p> <p><i>NLA 320 Broadmeadow - Newcastle Interchange</i></p> <p><i>Lookout Working Prohibited Locations Register</i></p>

Protection Officer assessment checklist

Protection Officer's name:		Yes <i>(Tick if Yes)</i>
This document has not expired 12 months beyond the issue date.		
SWI details and protection arrangements have been reviewed and validated for the assessed worksite location, including: <ul style="list-style-type: none"> • On-site safety assessment has been completed for relevancy of works being undertaken • The required protection details, environment and tasks are unchanged from the details of this SWI 		
The Protection Officer and Qualified Workers deploying qualifications are current and have practiced in the last 6 months. If not practiced, then a Rail Safety Coach must be contacted for guidance.		
Corridor Safety Number	Protection Officer Signature	Date



Warning

If an above item does not apply, the Protection Officer must not use this Safe Work Instruction. A new worksite protection plan must be completed in accordance with NRF 014 Worksite Protection Pre-work briefing and NRF 015 Worksite Protection Plan.

Lookout Working Worksite Protection for Broadmeadow Yard routine network maintenance activities



Worksite Protection Pre-work Briefing

Briefing date:

Protection Officer details

Work location:

Scope of work:

Worksite protection: Refer to Worksite Protection Plan for details

Hazards (e.g. Site specific hazards identified, including physical environment, human errors, plant and equipment)	Controls (to be implemented to eliminate or reduce the risk to the lowest practicable level)	Person responsible for Control
<ul style="list-style-type: none"> Approaching rail traffic 	Lookouts must be trained and competent to perform lookout duties. Lookouts must be rotated if performing lookout for extended periods of time Workers to remain within worksite limits as set out in this procedure. Lookouts must be placed as per protection plan on page 8. Workers are to stop work and move to a safe place immediately on being warned by the lookouts	Protection Officer and Lookout
<ul style="list-style-type: none"> Live adjacent lines 	Lookouts must provide warning to workers when rail traffic is approaching from the adjacent line in either direction.	Protection Officer and Lookout
Two - way running / multiple entry points into worksite	One Lookout placed watching each direction before work starts. Lookouts are to warn workers of approaching rail traffic, including rail traffic entering or travelling within the worksite. Workers are to stop work and move to a safe place.	Protection Officer and Lookout
Obstruction to Minimum Sighting Distance	Lookouts must provide warning to the workers whenever their line of sight is obstructed by passing rail traffic. Workers must stop work and move to a safe place and reassess positioning and method	Protection Officer and Lookout
Adjoining/Surrounding Worksites	Lookouts must have two independent audible warning devices that can be heard by workers over any noise generated by adjoining/surrounding worksites. Lookouts are to provide warning if their line of sight is obstructed by adjoining/surrounding worksites.	Protection Officer and Lookout
Access to / Egress from worksite Slips, trips, falls and hazards carrying equipment	Access and egress points must be agreed prior to entering the danger zone, consideration should be given to ease of access and safest possible entry and exit points. Protection Officer will assess and instruct when it is safe for workers to use <i>NGE 200 Walking in the Danger Zone</i> to move to the worksite or safe place.	All

Safe Work Instruction



Lookout Working Worksite Protection for Broadmeadow Yard routine network maintenance activities

Workplace Supervisor details

Form fields for name, contact No., Emergency assembly point (Access Gate), SWMS/SWI Ref #, First aid kit location (Sydney Trains work vehicle), and First aider.

Workplace Supervisor acknowledgement

The Workplace Supervisor acknowledges that all identified WHS and rail safety hazards have the appropriate controls in place to manage and/or eliminate the hazards.

Yes checkbox and signature field

Participant Acknowledgement

NOTE: Recipients of the briefing are to question the Briefer if they don't understand any part of this briefing.

All workers listed below acknowledge that they:

- 1. have been inducted to the site
2. are free from alcohol and drugs
3. are free from the effects of fatigue
4. hold the applicable and current Rail Safety Worker Authorisation, trade licence and/or induction record e.g. Construction Industry Induction
5. must wear the appropriate Personal Protective Equipment (PPE)
6. have been briefed on the contents of the Worksite Protection Plan
7. have been shown the Worksite Protection Plan diagram
8. understand the kinds and limits of worksite protection in place
9. have been briefed about any new hazards and controls identified during the final site inspection (final site inspection must be conducted immediately before commencing work)

Mark each check box below with a tick [x] if the item applies or a cross [X] if the item does not apply.

- checkboxes for: informed of electrical permit requirements, briefed on SWMS/SWIs, instructed in controls, aware of hazardous materials, briefed on SDS, briefed on WHS Management plan, briefed on hazards of adjoining worksites/processes.

Table with 4 columns: Name, Signature, Time of briefing: hh:mm, Amendment briefing: hh:mm and initial. Multiple empty rows for participant entries.

Lookout Working Worksite Protection for Broadmeadow Yard routine network maintenance activities

Worksite Protection Plan – Lookout Working

Signaller Details

<input type="text" value="name"/>	Broadmeadow Panel	02 4923 0901
-----------------------------------	--------------------------	---------------------

Protection Officer details

<input type="text" value="name"/>	<input type="text" value="signature"/>	<input type="text" value="contact No."/>
<input type="text" value="RSW or RIW No."/>	<input type="text" value="designation"/>	Planned duration <input type="text"/>

Workplace Supervisor details:

Type of work:

on the	Up and Down Main lines		
	Up and Down Relief lines		
	Up and Down Through lines		
	Up and Down Sidings 1 to 8		
	Decant Sidings		
	Storage/Sidings/Entry/Exit Roads		
	Lambton Road Under Bridge		
	Endeavour Centre		
between	B 211 Signal	and	WJ 13 Signal

Worksite assessment

Has the Lookout Working Prohibited Locations Register been consulted? Yes

Warning method

<input type="text" value="Horn/Whistle"/>	<input type="text" value="Voice/Touch"/>
---	--

Minimum Warning Time Calculations

Maximum track speed

Number of Lookouts used Position of Lookouts to

Number of additional Lookouts* used Position of Lookouts to

Note - Lookouts are relocated to positions within these KMs as workers move along the worksite.

2 sec	+	3 sec	+	10 sec	=	Minimum Warning Time (MWT)	15 sec	100 km/h	417 metres
2 sec	+	3 sec	+	10 sec		15 sec	80 km/h	334 metres	
2 sec	+	3 sec	+	10 sec		15 sec	25 km/h	105 metres	
2 sec	+	3 sec	+	10 sec		15 sec	13 km/h	55 metres	
2 sec	+	30 sec	+	10 sec		42 sec	25 km/h	292 metres	
See Time (S)		Move Time (M)		Safe Time		(S+M+10 sec = MWT)	Track speed	Minimum Sighting Distance as calculated	

Note – Additional MWT calculations can be recorded in the Protection Officer’s Diary.

Where are the safe places identified for the Lookouts and the workers?

Lookout Working Worksite Protection for Broadmeadow Yard routine network maintenance activities

Lookouts:

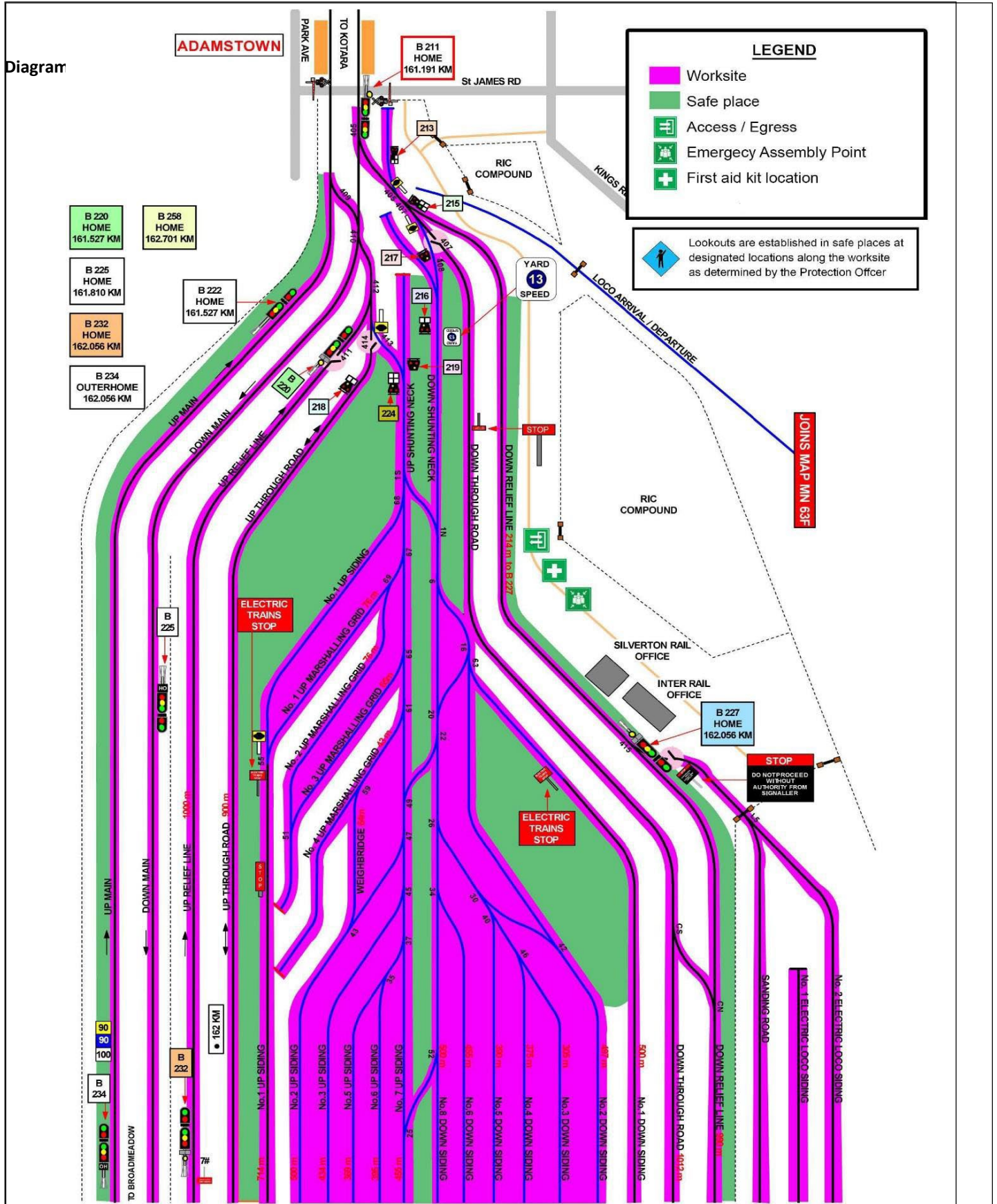
Workers:

Ensure the workers have been briefed about these work details Yes

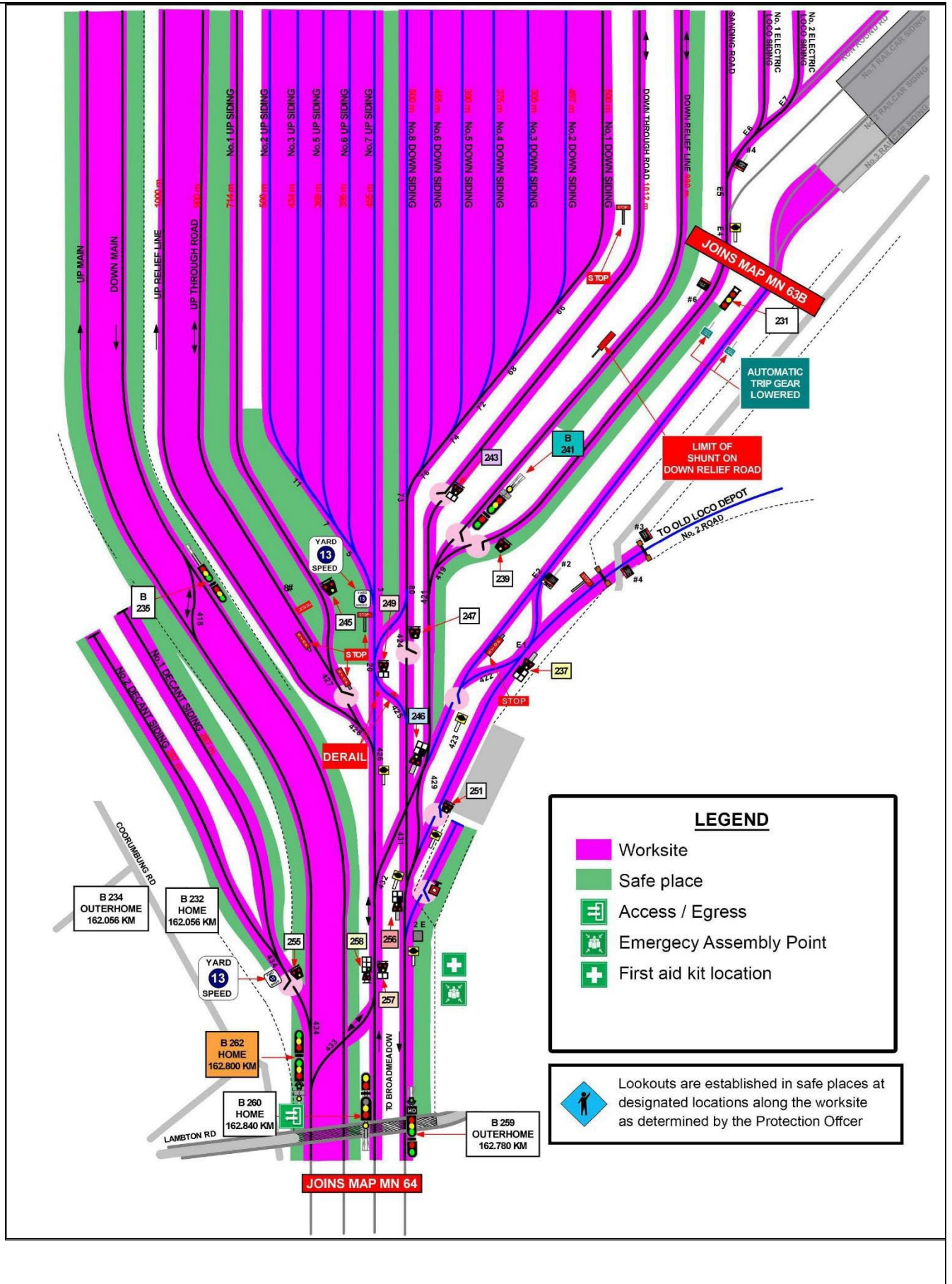
Diagrams, notes, and detailed instructions are over the next pages. These are to be read and followed as part of this worksite protection plan for Lookout Working.

INSTRUCTIONS:	<ol style="list-style-type: none"> 1. Workers enter corridor via gate N00 162.704 U off Coorumbung Road, Broadmeadow. 2. Protection Officer briefs workers about the worksite protection arrangements. 3. Protection Officer contacts Broadmeadow Panel and tells the signaller about the use of lookout working in Broadmeadow Yard. 4. Workers remain in Up Main safe place until Protection Officer informs Lookouts are in place. 5. Establish Lookouts at designated locations. 6. Workers start work up to designated locations. 7. Workers move to safe place. 8. Re-established Lookouts at next designated location 9. Repeat steps 6-8 until work is complete. 10. Workers move to a safe place. 11. Recall lookouts. 12. Workers exit worksite via gate N00 162.716 D off Brown Road, Broadmeadow. 13. Protection Officer contacts Broadmeadow Panel to end Lookout Working.
ADDITIONAL DETAILS	<p><u>Obstruction to Minimum Sighting Distance</u></p> <p>Stabled rail traffic on any tracks and conditions on the day may obstruct minimum sighting distance. When this hazard is identified, workers must stop work and move to a safe place until the Protection Officer makes an assessment and relocates lookouts to achieve the required minimum sighting distance.</p> <p><u>Adverse weather conditions</u></p> <p>Weather conditions on the day may impede sighting distance. Protection Officers must ensure the required Minimum Sighting Distance is attainable by reassessing positions of lookouts.</p>
LOOKOUTS	<p>Lookout positions are reassessed throughout the worksite to achieve Minimum Sighting Distance. Additional move time of up to 30 seconds is used at Lambton Road Overbridge and Lookouts must be able to achieve the respective calculated Minimum Sighting Distance of 292m.</p>
ACCESS GATES / EGRESS	<p>N00 162.716 D off Brown Road, Broadmeadow</p> <p>N00 162.704 U off Coorumbung Road, Broadmeadow</p> <p>N00 162.792 U off Coorumbung Road, Broadmeadow</p>

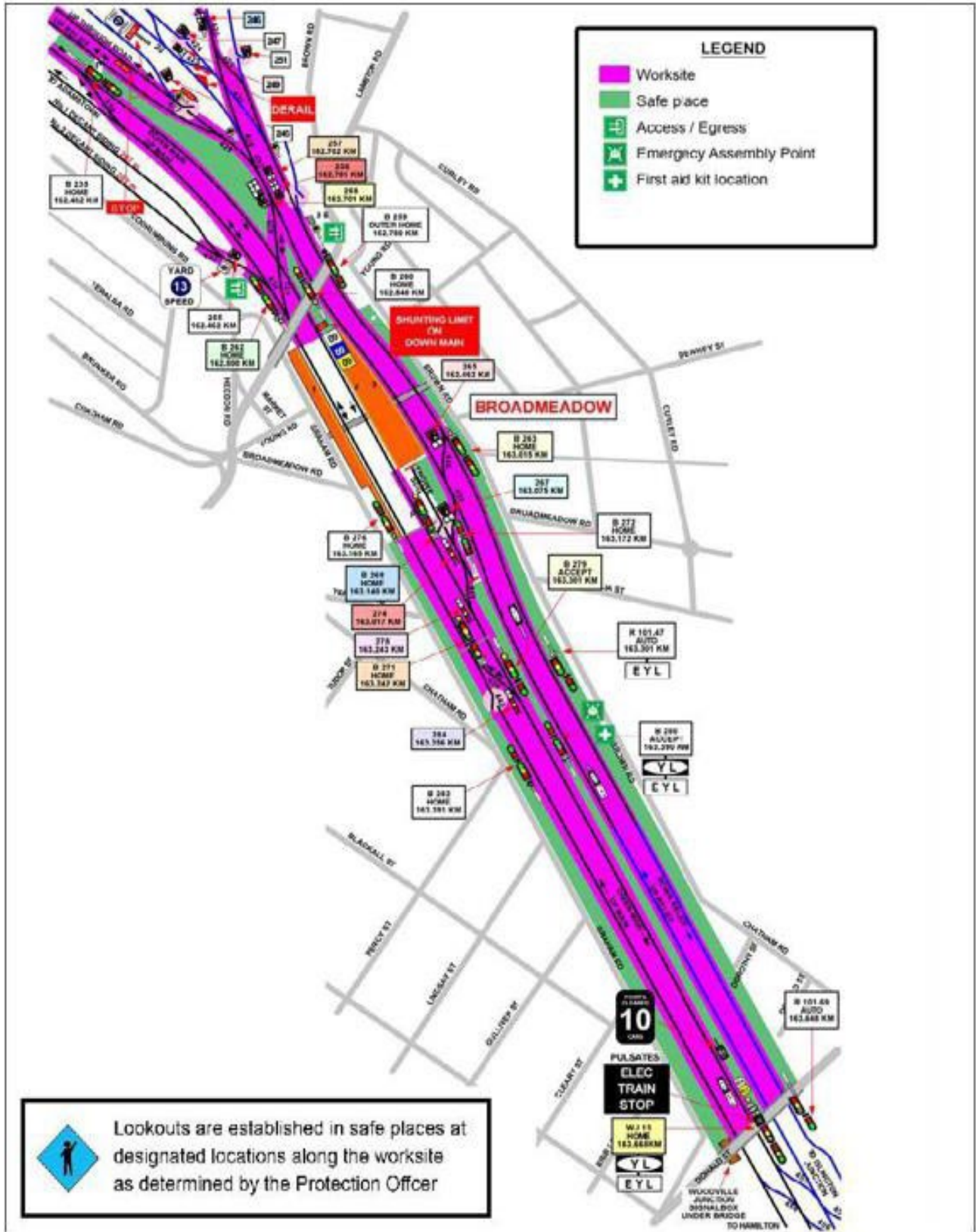
Lookout Working Worksite Protection for Broadmeadow Yard routine network maintenance activities



Lookout Working Worksite Protection for Broadmeadow Yard routine network maintenance activities



Lookout Working Worksite Protection for Broadmeadow Yard routine network maintenance activities



Lookout Working Worksite Protection for Broadmeadow Yard routine network maintenance activities

