

TOA Worksite Protection for Berry to Bomaderry

DOCUMENT NO.	D2023/11626
WORK DESCRIPTION	Routine Network Maintenance Activities
WPP Number	SC41A2 10118
SCOPE:	<p>This SWI is applicable for the worksite protection arrangements using TOA for routine network maintenance performed by south coast maintenance teams Work activities include:</p> <ul style="list-style-type: none"> Routine preventative and corrective work such as inspections and maintenance as appropriate for the type of protection being applied as part of this plan.
AUTHORISATIONS:	<p>Protection Officer: Protection Officer Level 2 or higher. Placing TOA Protection: Hand Signaller Level 1 or higher, or Protection Officer Level 1 or higher.</p>
SAFETY CONTROLS – Track Occupancy Authority (TOA)	<p>The TOA limits are from:</p> <ul style="list-style-type: none"> BE 7 Signal and BY 5 Signal on the South Coast Branch Line <p>Protection is placed at:</p> <ul style="list-style-type: none"> Railway Track Signal protection and Worksite Protection Markers at 141.450 KM and 152.990 KM.
PRESTART REQUIREMENTS:	<p>Protection Officer assessment checklist must be completed before instructions in this SWI are followed. Tools and equipment required:</p> <ul style="list-style-type: none"> Protection Officer requires a phone to contact the Signaller. Qualified Workers placing protection require: <ul style="list-style-type: none"> - 6x Railway Track Signals - 2x Worksite Protection Markers
FURTHER INFORMATION:	<p><i>NWT 300 Planning work in the Rail Corridor</i></p> <p><i>NWT 304 Track Occupancy Authority</i></p> <p><i>NPR 702 Using a Track Occupancy Authority</i></p> <p><i>NRF 002 Track Occupancy Authority (TOA)</i></p> <p><i>NGE 200 Walking in the Danger Zone</i></p> <p><i>NLA 418 Wollongong to Bomaderry (Nowra)</i></p>

TOA Worksite Protection for Berry to Bomaderry

Protection Officer assessment checklist

Protection Officer's name:		Yes (Tick if yes)
This document has not expired 12 months beyond the issue date.		
On-site safety assessment has been completed and additional hazards and controls recorded on the pre-work briefing (Page 3).		
SWI details and protection arrangements have been reviewed and validated for the assessed worksite location.		
Corridor Safety Number	Protection Officer Signature	Date

Warning



If an above item does not apply, the Protection Officer must not use this Safe Work Instruction. A new worksite protection plan must be completed in accordance with NRF 014 Worksite Protection Pre-work briefing and NRF 015 Worksite Protection Plan.

TOA Worksite Protection for Berry to Bomaderry

Worksite Protection Plan – Track Occupancy Authority

Signaller details

name	Berry Panel	02 4223 5644
name	Bomaderry Panel	02 4223 5802

Protection Officer details

name	signature	contact No.
RSW or RIW No.	designation	Planned duration

Workplace Supervisor details:

Type of work: **Routine Network Maintenance Activities**

Worksite location

on the	South Coast Branch Line	
between	142.000 Km	and 152.400 Km

The following are diagrams, notes, and detailed instructions. These are to be read and followed as part of this worksite protection plan for TOA.

INSTRUCTIONS:	<ol style="list-style-type: none"> Workers enter the rail corridor via Mullers Lane Access Gate (100 142.890D) Protection Officer conducts the worksite protection pre-work briefing. Protection Officer contacts the Signaller at either Berry or Bomaderry Panel and requests TOA. Instruct Qualified Workers to place Railway Track Signal protection and Worksite Protection Markers at 141.450 KM and 152.990 KM on the South Coast Branch Line. Protection Officer informs the workplace supervisor that it is safe for work to start. Workers start work. After all work is completed, move all workers and equipment into a safe place. Instruct Qualified Workers to remove Railway Track Signal protection, Worksite Protection Markers from the TOA. Workers egress the rail corridor via Mullers Lane Access Gate (100 142.890D) After all protection is removed, Protection Officer contacts the Signaller at either Berry or Bomaderry Panel that work is complete, all protection has been removed from the line, workers and equipment are clear of the Danger Zone and if any restrictions have been applied to fulfil the TOA.
----------------------	---

ADDITIONAL DETAILS	<p>TOA can be requested and issued via Berry or Bomaderry.</p> <p>Please note between 2130-hours and 0500-hours Berry is controlled by Bomaderry</p>
---------------------------	--

ACCESS/EGRESS:	 <p style="text-align: center;">Image 1: Access gate Mullers Lane (100 142.890D)</p>
-----------------------	---



Image 2: Access O'Keefes Lane (I00 144.373 U)



Image 3: Access Gate – Jaspers Brush RD (I00 145.081 U)

TOA LIMITS:

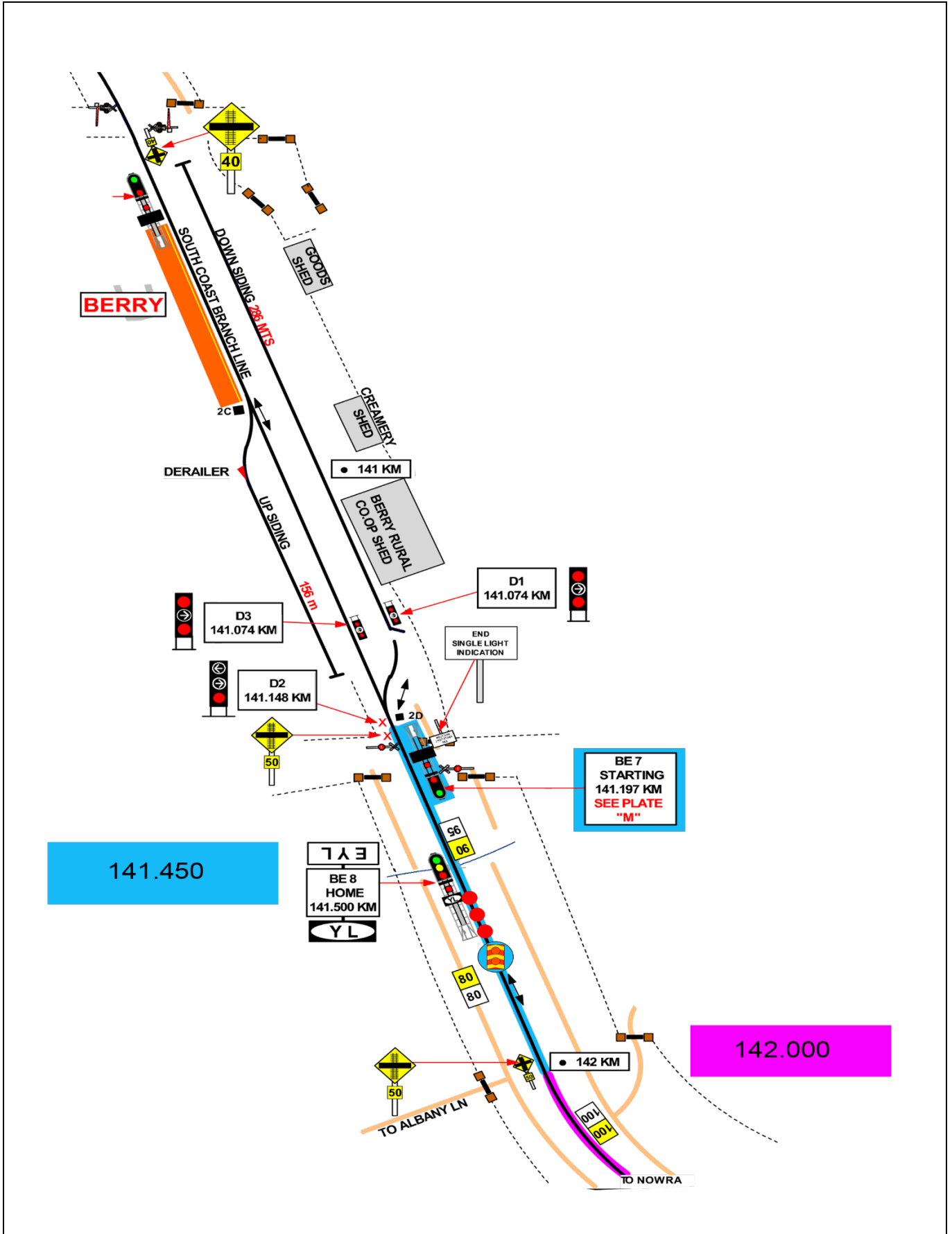


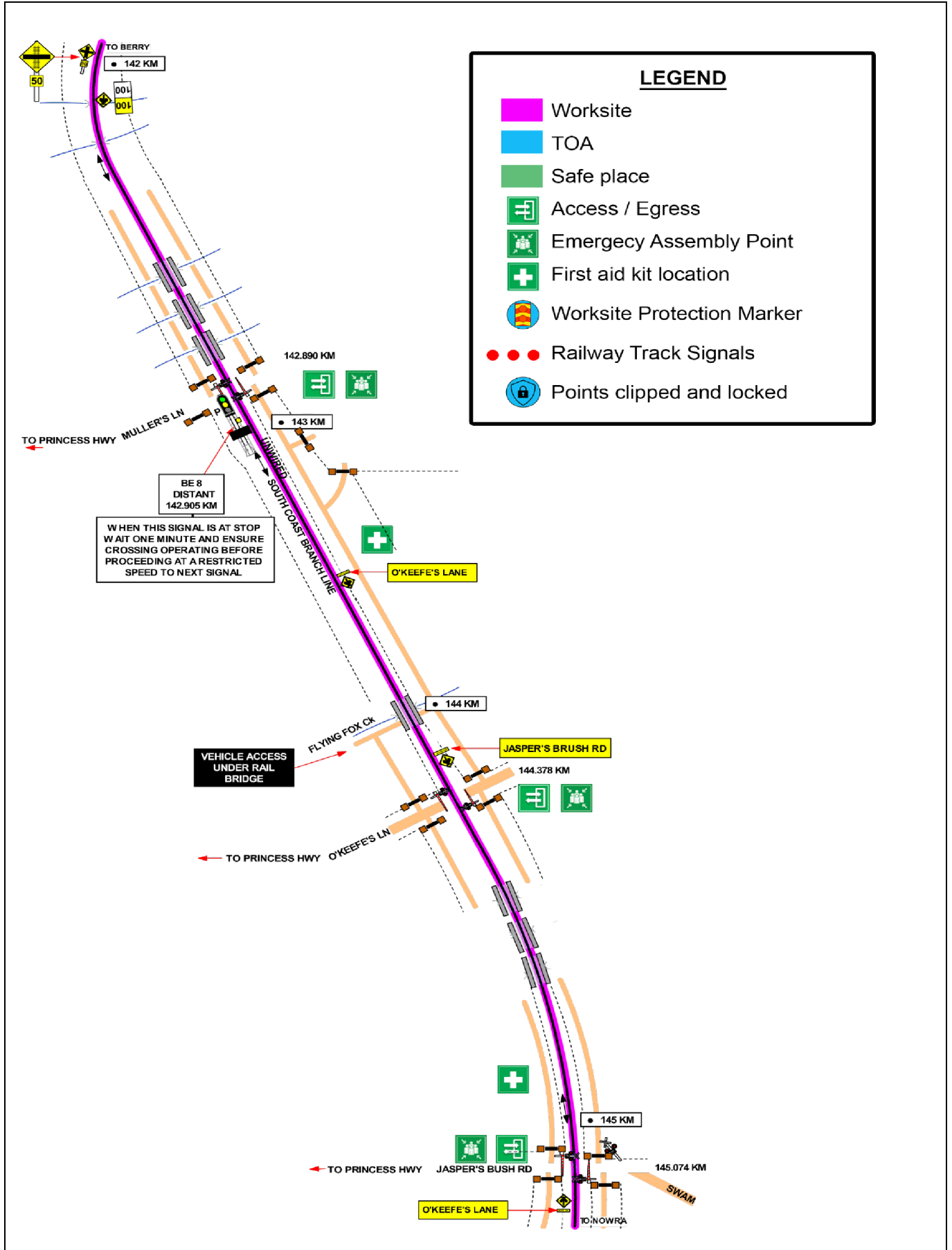
Image 4: TOA limit – BY 5 Signal at Bomaderry

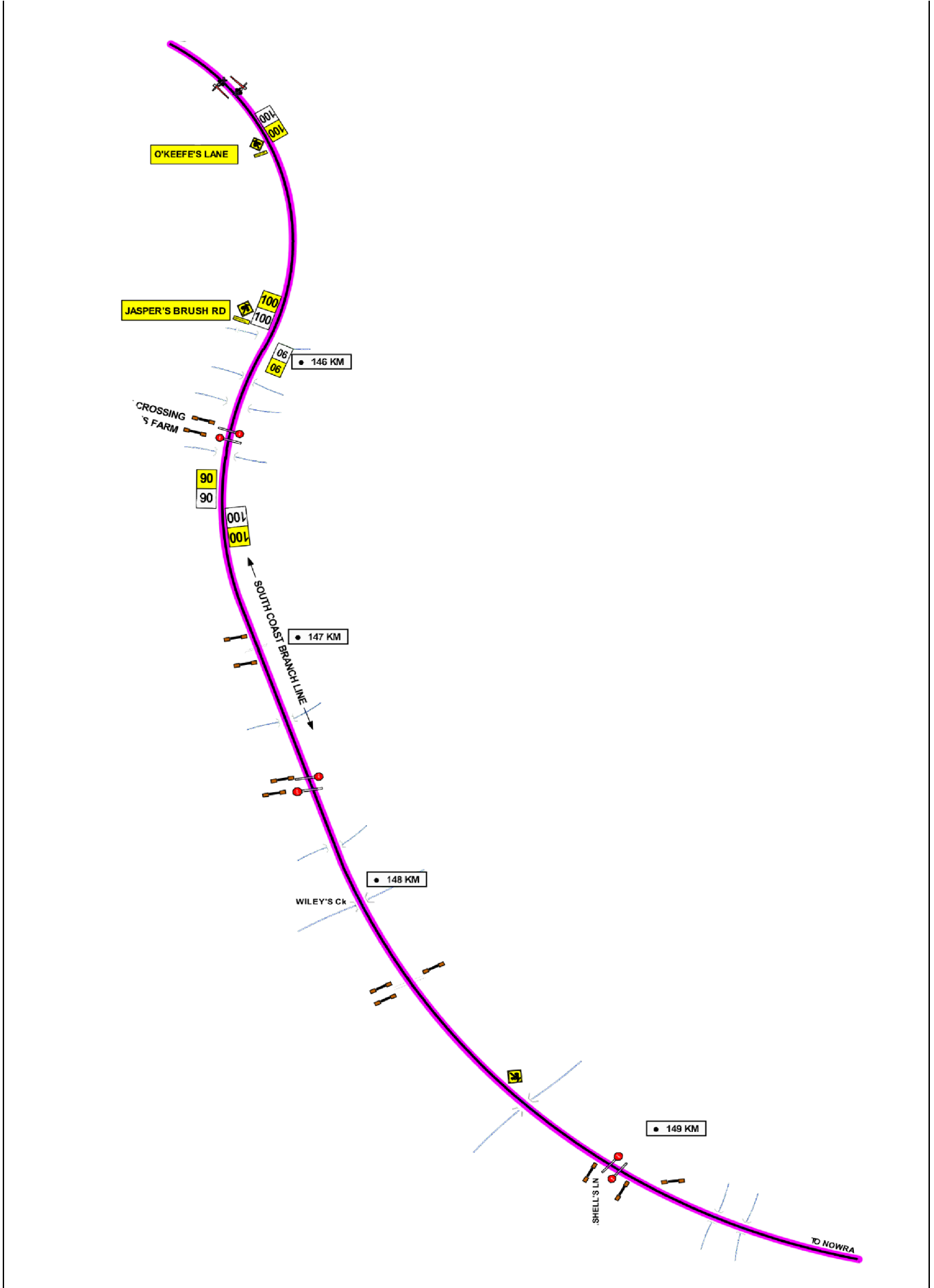


Image 5: TOA limit – BE 7 Signal at Berry

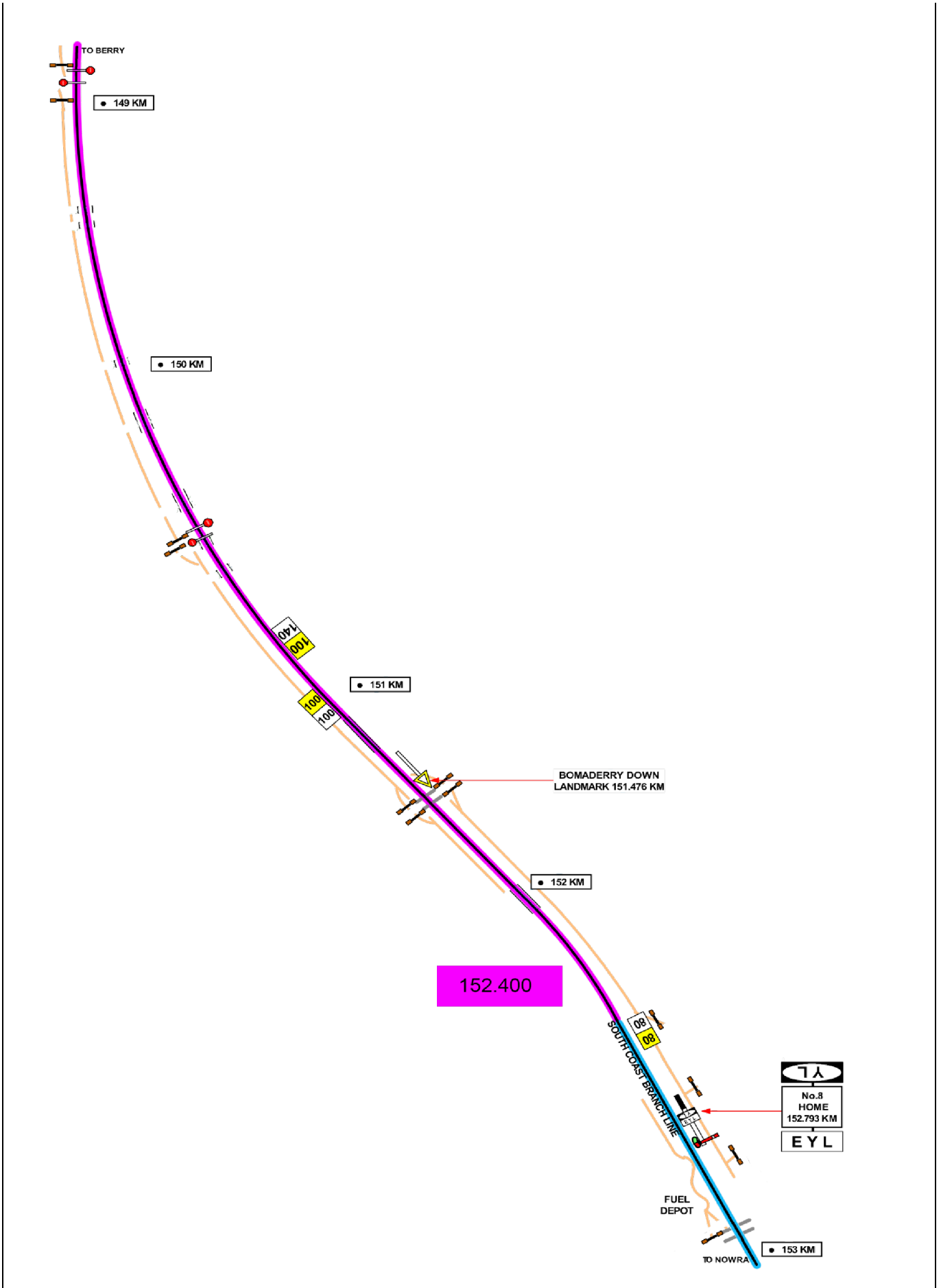
Diagram







TOA Worksite Protection for Berry to Bomaderry



TOA Worksite Protection for Berry to Bomaderry

