

TOA Worksite Protection for Berry to Bomaderry

DOCUMENT NO.	D2023/11626		
WORK DESCRIPTION	Routine Network Maintenance Activities		
WPP Number	SC41A2 10118	SAP Code	
SCOPE:	<p>This SWI is applicable for the worksite protection arrangements using TOA for routine network maintenance performed by south coast maintenance teams</p> <p>Work activities include:</p> <ul style="list-style-type: none"> Routine preventative and corrective work such as inspections and maintenance as appropriate for the type of protection being applied as part of this plan. 		
AUTHORISATIONS:	<p>Protection Officer: Protection Officer Level 2 or higher.</p> <p>Placing TOA Protection: Handsignaller Level 1 or higher, or Protection Officer Level 1 or higher.</p>		
SAFETY CONTROLS – Track Occupancy Authority (TOA)	<p>The TOA limits are from:</p> <ul style="list-style-type: none"> BE 7 Signal and BY 5 on the South Coast Branch Line. <p>The Worksite is from 142.000km to 152.400km on the South Coast Branch Line</p> <p>Protection is placed at:</p> <ul style="list-style-type: none"> Railway Track Signal protection and Worksite Protection Markers at 141.450 KM and 152.990 KM. 		
PRESTART REQUIREMENTS:	<p>Protection Officer assessment checklist must be completed before instructions in this SWI are followed.</p> <p>Tools and equipment required:</p> <ul style="list-style-type: none"> Protection Officer requires a phone to contact the Signaller. Qualified Workers placing protection require: <ul style="list-style-type: none"> - 6 x Railway Track Signals - 2 x Worksite Protection Markers 		
FURTHER INFORMATION:	<p><i>NWT 300 Planning work in the Rail Corridor</i></p> <p><i>NWT 304 Track Occupancy Authority</i></p> <p><i>NPR 702 Using a Track Occupancy Authority</i></p> <p><i>NPR 707 Clipping points</i></p> <p><i>NRF 002 Track Occupancy Authority (TOA)</i></p> <p><i>NPR 712 Protecting work from rail traffic on adjacent lines</i></p> <p><i>NGE 200 Walking in the Danger Zone</i></p> <p><i>NLA 418 Wollongong to Bomaderry (Nowra)</i></p>		

TOA Worksite Protection for Berry to Bomaderry

Protection Officer assessment checklist

Protection Officer's name:		Yes (Tick if Yes)
This document is still current at the time of its application? (Up to 12 months from the document issue date)		
SWI details and protection arrangements have been reviewed and validated for the assessed worksite location, including: <ul style="list-style-type: none"> On-site safety assessment has been completed for relevancy of works being undertaken The required protection details, environment and tasks are unchanged from the details of this SWI 		
The Protection Officer and Qualified Workers deploying qualifications are current and have practiced in the last 6 months. If not practiced, then a Rail Safety Coach must be contacted for guidance.		
Corridor Safety Number	Protection Officer Signature	Date

Warning



If an above item does not apply, the Protection Officer must not use this Safe Work Instruction. A new worksite protection plan must be completed in accordance with NRF 014 Worksite Protection Pre-work briefing and NRF 015 Worksite Protection Plan.

TOA Worksite Protection for Berry to Bomaderry

Worksite Protection Pre-work Briefing

Briefing date: / /

Protection Officer Details

name signature contact No.

Work location: **Berry to Bomaderry**

Scope of work: **Routine Network Maintenance Activities**

Worksite protection: **TOA** Refer to Worksite Protection Plan for details

Hazards (e.g. Site specific hazards identified, including physical environment, human errors, plant and equipment)	Controls (to be implemented to eliminate or reduce the risk to the lowest practicable level)	Person responsible for Control
Struck by rail traffic	TOA implemented.	Protection Officer
Adjacent live lines	Designated work and walk areas as per Protection Officer's instructions. All work must stop when warned by Protection Officer until rail traffic has passed.	Protection Officer
Electrical infrastructure	Electrical infrastructure is to be treated as live and workers must maintain a safe approach distance as instructed by the Protection Officer or Workplace Supervisor.	Protection Officer & Workplace Supervisor
Mobile phone distraction	Mobile phone usage is only allowed in the Danger Zone when required for work purposes. Other than being used for work purposes, mobile phones may be used only in a safe place after informing the Protection Officer.	All

Safe Work Instruction



TOA Worksite Protection for Berry to Bomaderry

Workplace Supervisor Details

contact No.
 Emergency assembly point: SWMS/SWI Ref #:
 First Aid kit location: First Aider:

Workplace Supervisor Acknowledgement

The Workplace Supervisor acknowledges that all identified WHS and rail safety hazards have the appropriate controls in place to manage and/or eliminate the hazards.

Yes

Participant Acknowledgement

NOTE: Recipients of the briefing are to question the Briefer if they don't understand any part of this briefing.

All workers listed below acknowledge that they:

1. have been inducted to the site 2. are free from the effects of alcohol/drugs/fatigue 3. hold the applicable and current Rail Safety Worker Authorisation, trade licence and/or induction record e.g. Construction Industry Induction 4. wear the appropriate Personal Protective Equipment (PPE)	5. have been briefed on the contents of the Worksite Protection Plan 6. have been shown the Worksite Protection Plan diagram 7. understand the kinds and limits of worksite protection in place 8. have been briefed about any new hazards and controls identified during the final site inspection (<i>final site inspection must be conducted immediately before commencing work</i>)
--	--

Mark each check box below with a tick if the item applies or a cross if the item does not apply.

<input type="checkbox"/> have been informed of the requirements of the electrical permit (if required) <input type="checkbox"/> have been briefed on the SWMS/SWIs/documentated safe work practice for the job <input type="checkbox"/> have been instructed in the controls recorded in this document and SWMS/SWIs	<input type="checkbox"/> have been made aware of any hazardous materials/substances on site <input type="checkbox"/> have been briefed on Safety Data Sheets (SDS) <input type="checkbox"/> have been briefed on the WHS Management plan <input type="checkbox"/> have been briefed on the hazards of adjoining worksites/processes.
--	---

Name	Signature	Time of briefing: hh:mm	Amendment briefing: hh:mm and initial

TOA Worksite Protection for Berry to Bomaderry

Worksite Protection Plan – Track Occupancy Authority

Signaller Details

<input type="text" value="name"/>	Berry Panel	02 4464 1022
	Bomaderry Panel	02 4223 5802

Protection Officer Details

<input type="text" value="name"/>	<input type="text" value="signature"/>	<input type="text" value="contact No."/>
<input type="text" value="RSW or RIW No."/>	<input type="text" value="designation"/>	Planned duration <input type="text"/>

Workplace Supervisor details:

Type of work: **Routine Network Maintenance Activities**

Worksite Location		
On the	<input type="text" value="South Coast Branch Line"/>	
between	<input type="text" value="142.000km"/>	and <input type="text" value="152.400km"/>

The following are diagrams, notes and detailed instructions. These are to be read and followed as part of this worksite protection plan for TOA.

INSTRUCTIONS:	<ol style="list-style-type: none"> Workers enter the rail corridor via selected access gate Protection Officer conducts the worksite protection pre-work briefing. Protection Officer contacts the Signaller at either Berry or Bomaderry panel and requests TOA. After TOA is issued, Instruct Qualified Workers to place Railway Track Signal protection and Worksite Protection Markers at 141.450 KM and 152.990 KM on the South Coast Branch Line. Protection Officer informs the workplace supervisor that it is safe for work to start. Workers start work. After all work is completed, move all workers and equipment into a safe place. Instruct Qualified Workers to remove Railway Track Signal protection, Worksite Protection Markers from the TOA. Workers egress the rail corridor via selected access gate After all protection is removed, Protection Officer contacts the Signaller that work is complete, all protection has been removed from the line, workers and equipment are clear of the Danger Zone and if any restrictions have been applied to fulfil the TOA.
ADDITIONAL INFORMATION	<p>TOA can be requested and issued via Berry or Bomaderry.</p> <p>Please note between 2130-hours and 0500-hours Berry is controlled by Bomaderry</p>

TOA Worksite Protection for Berry to Bomaderry

ACCESS/EGRESS:



Image 1: Access – Mullers Lane (I00 142.890 D)

TOA Worksite Protection for Berry to Bomaderry



Image 2: Access Okeefes Lane (100 144.373 U)



Image 3: Access - Jaspers Brush Lane (100 145.081 U)

TOA LIMITS:



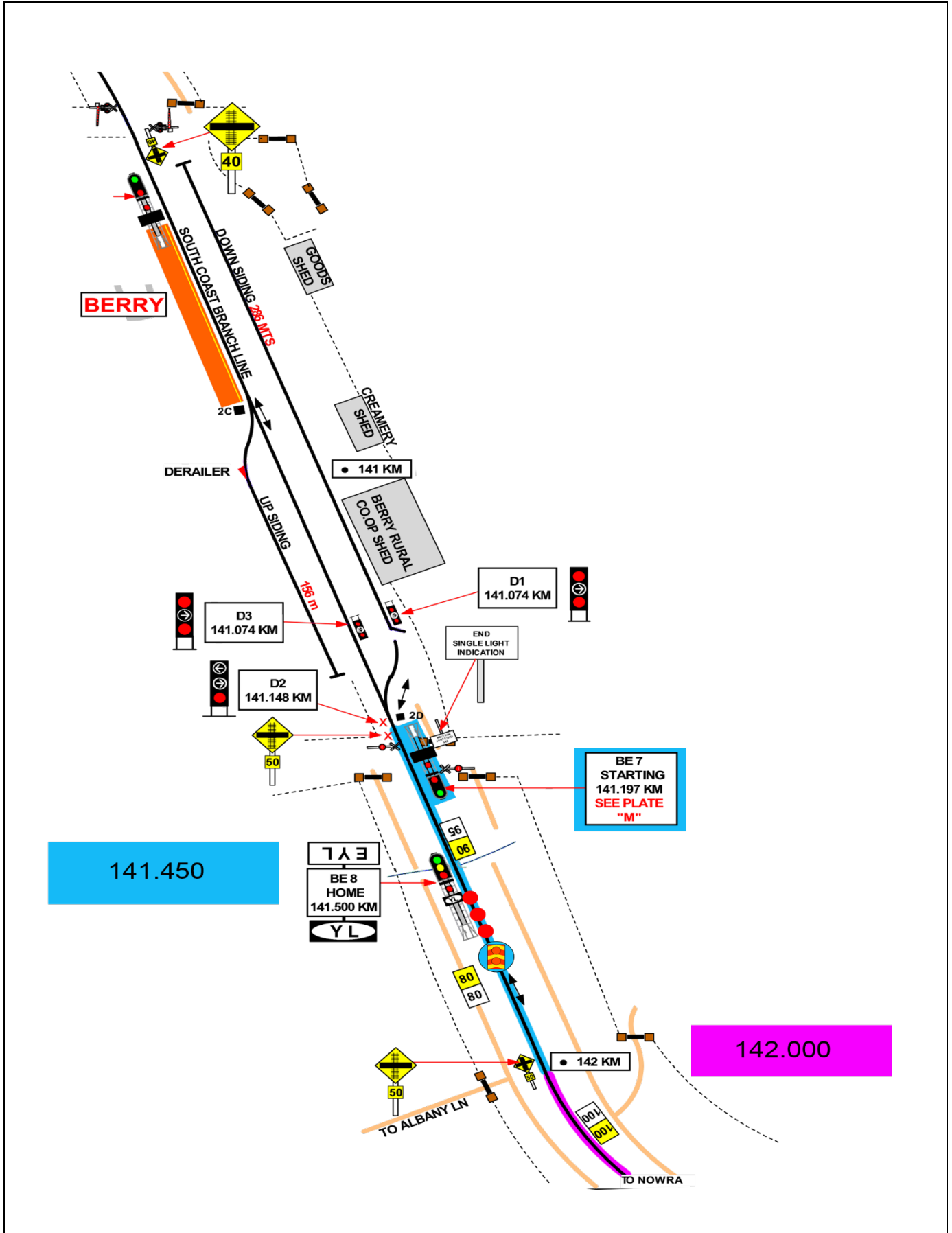
Image 4: TOA limit – BY 5 Signal at Bomaderry

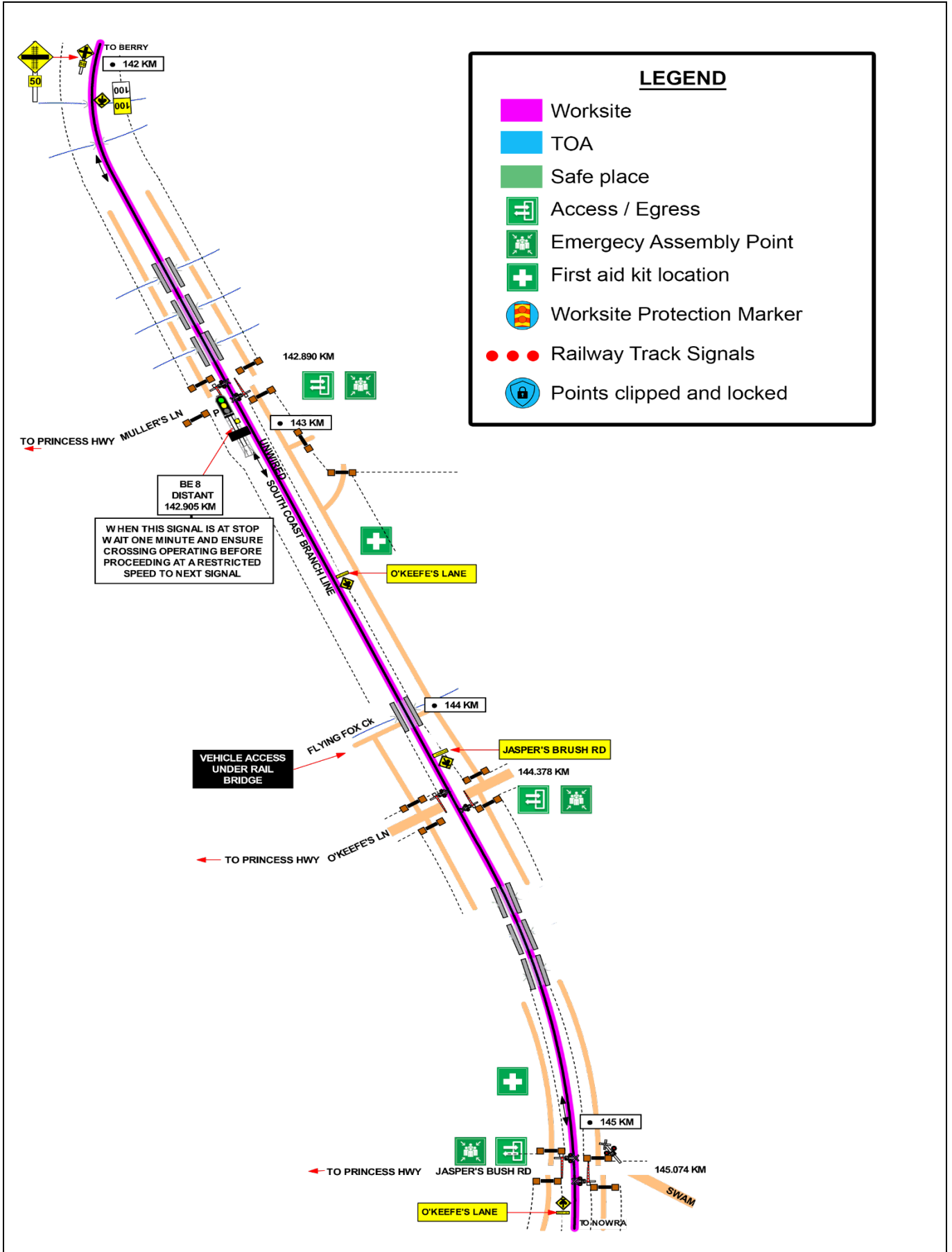


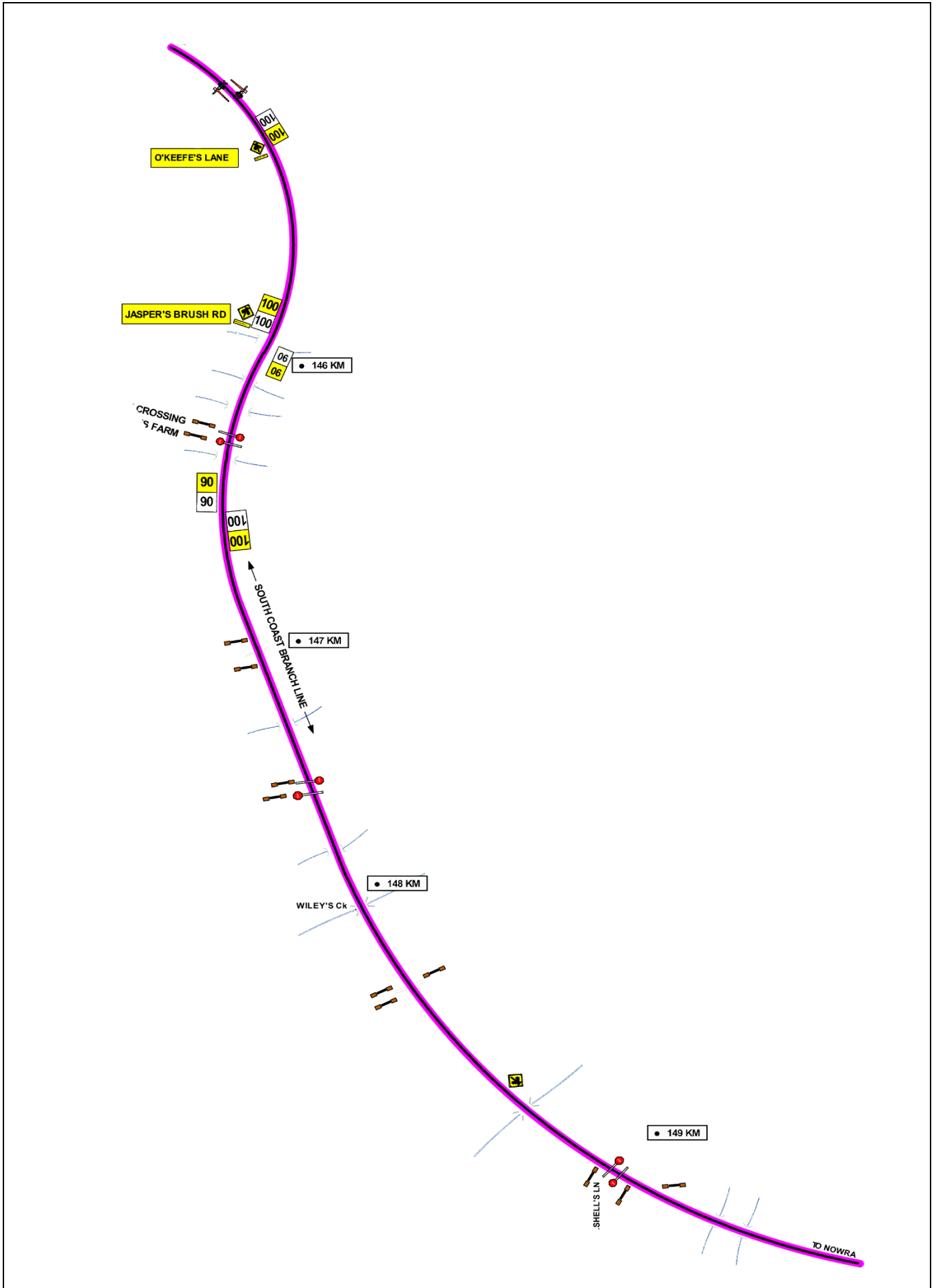
Image 5: TOA limit – BE 7 Signal at Berry

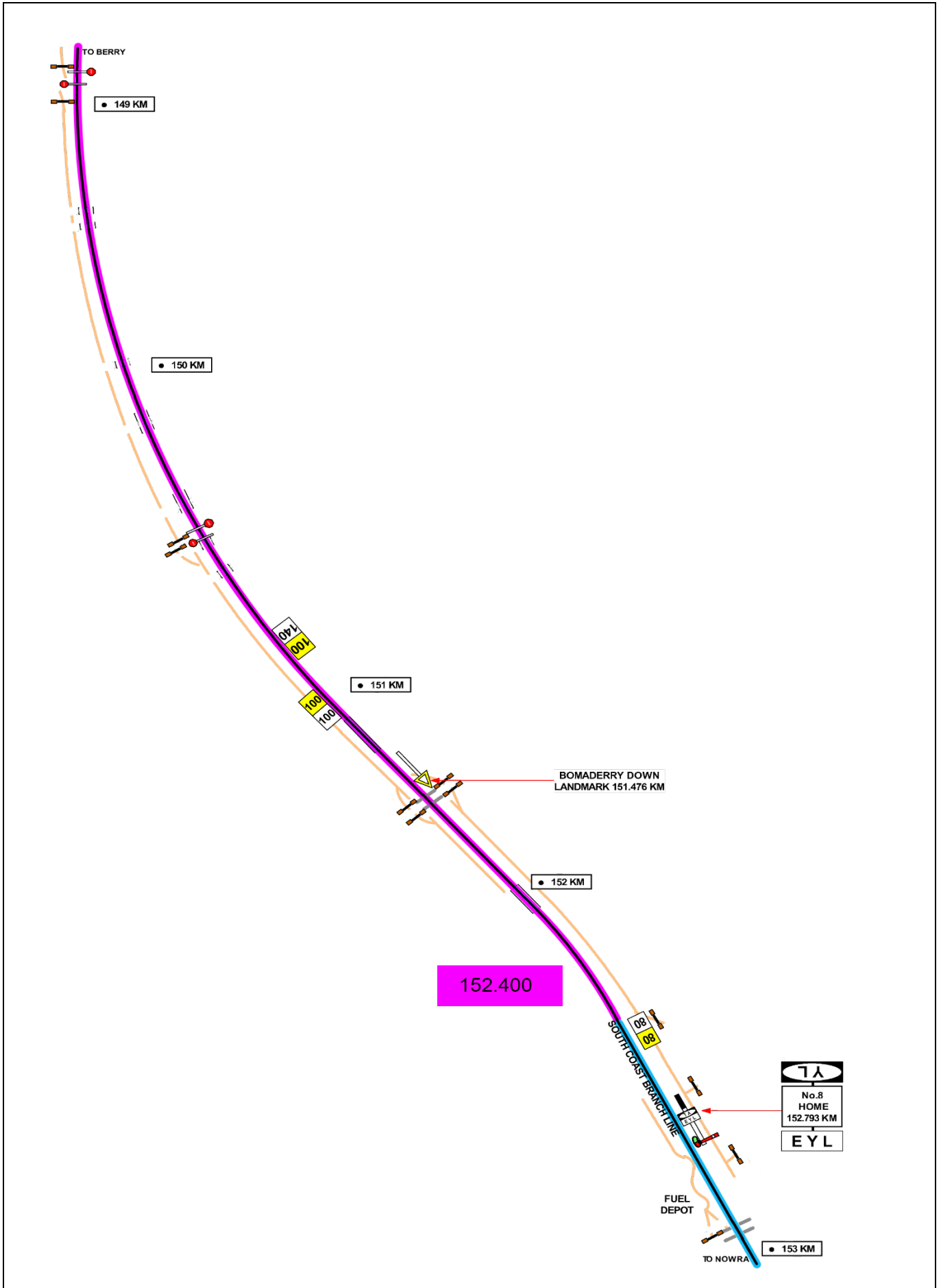
TOA Worksite Protection for Berry to Bomaderry

Diagram









TOA Worksite Protection for Berry to Bomaderry

