

# Worksite Protection Planning Diagrams

South Coast Line - Coniston Jct to Port Kembla including Unanderra North Jct - I10

## Stations Covered

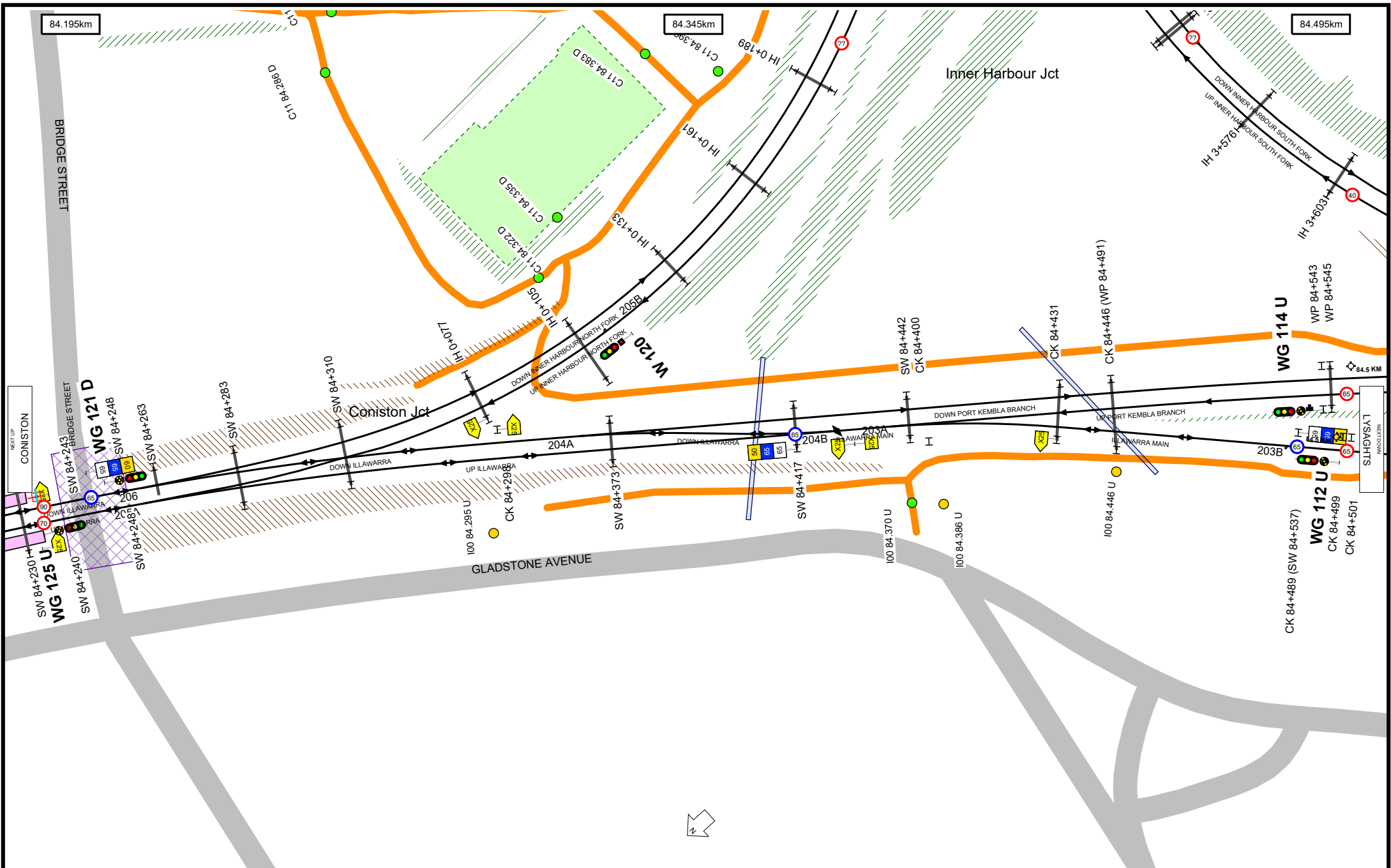
---

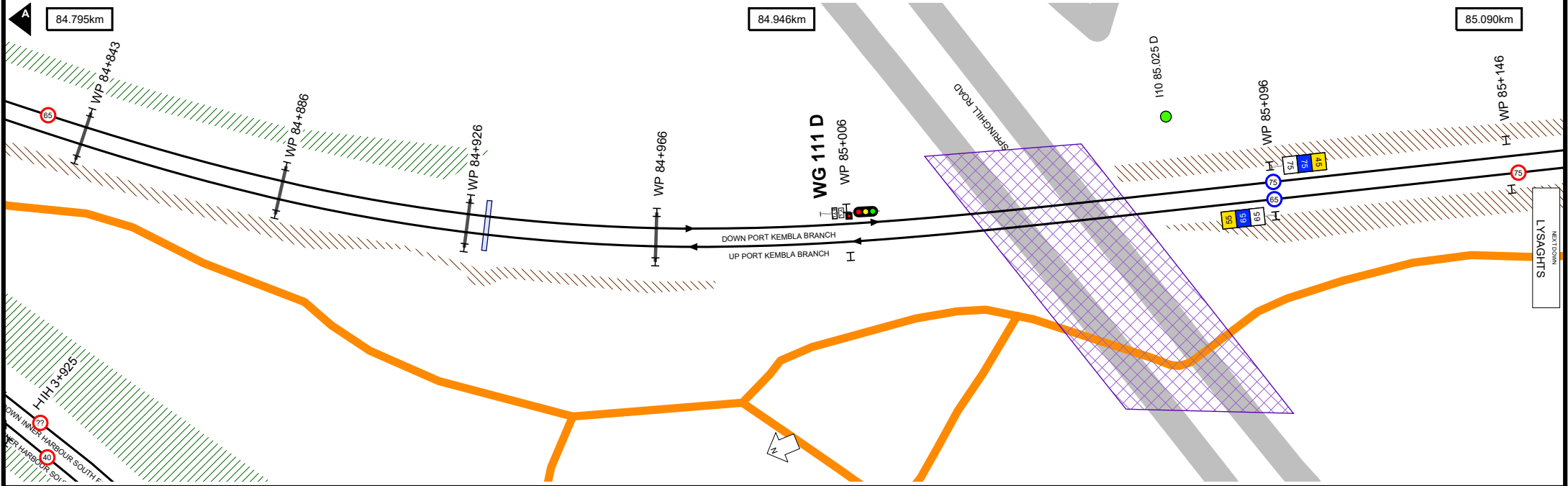
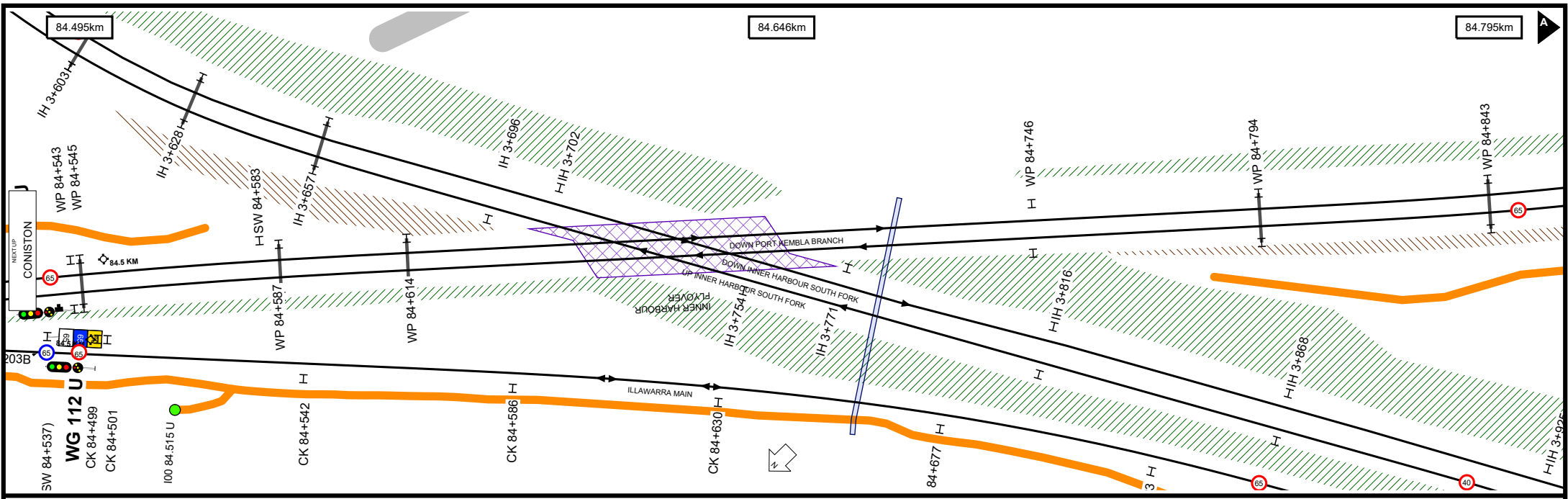
CONISTON	2
LYSAGHTS	6
CRINGILA	10
PORT KEMBLA NORTH	12
PORT KEMBLA	17

## Kilometrage References

---

84.195km	2
85.000km	3
90.000km	13
85.524km	5

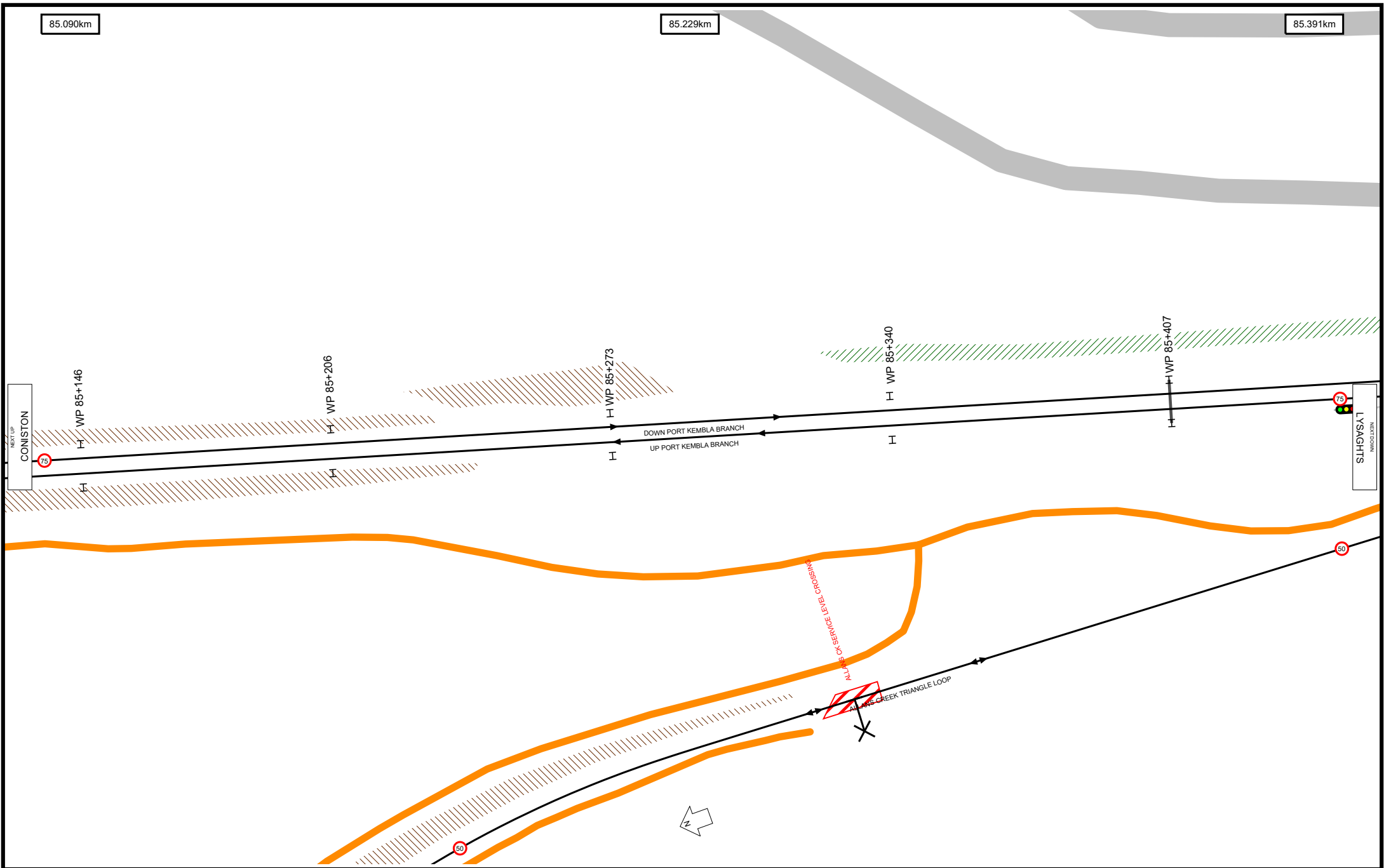




85.090km

85.229km

85.391km



Worksite Protection Planning Diagram  
Contact: rcp@transport.nsw.gov.au



Transport for NSW

**UNCONTROLLED WHEN PRINTED**

Data shown here may not have been field verified.  
Do not use for operational purposes without checking against a controlled document.  
For data issues contact GIS.Support@transport.nsw.gov.au

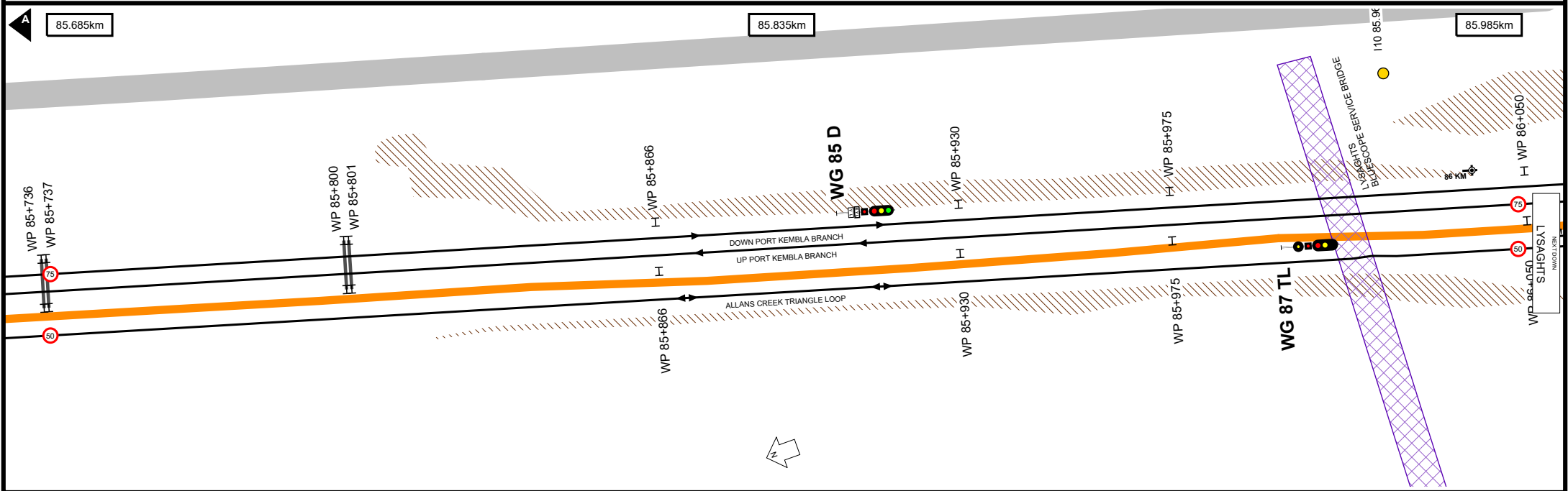
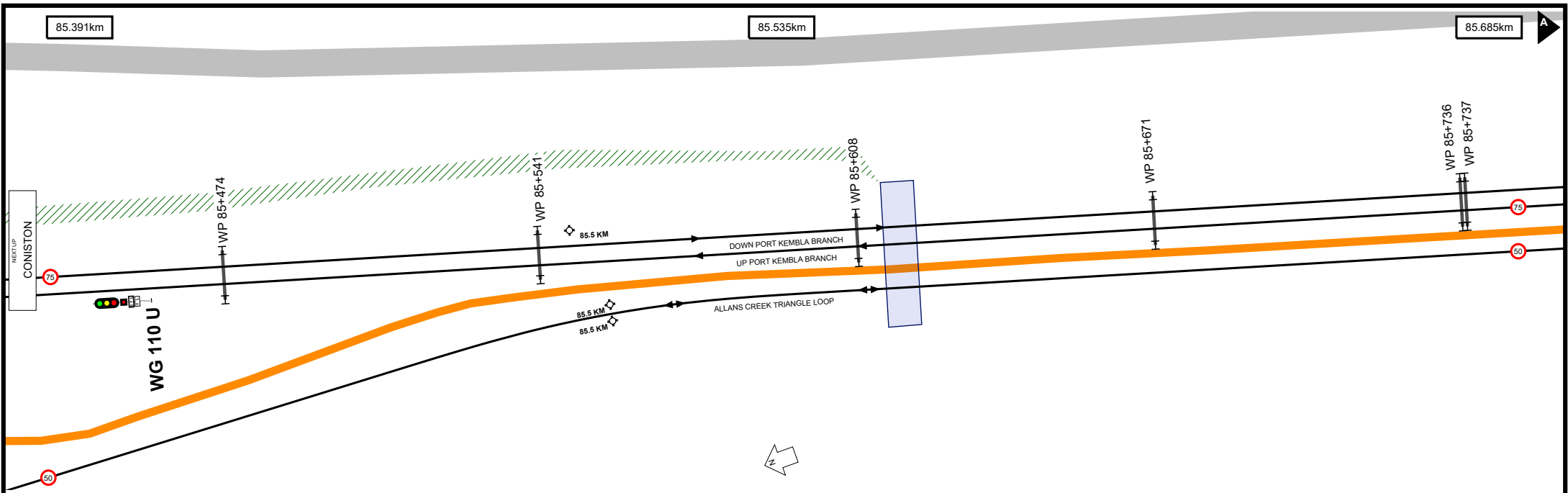
TITLE: **South Coast Line - Coniston Jct to Port Kembla - I10**  
Page range 85.090-85.391km

A4  
30/07/2024

SCALE:



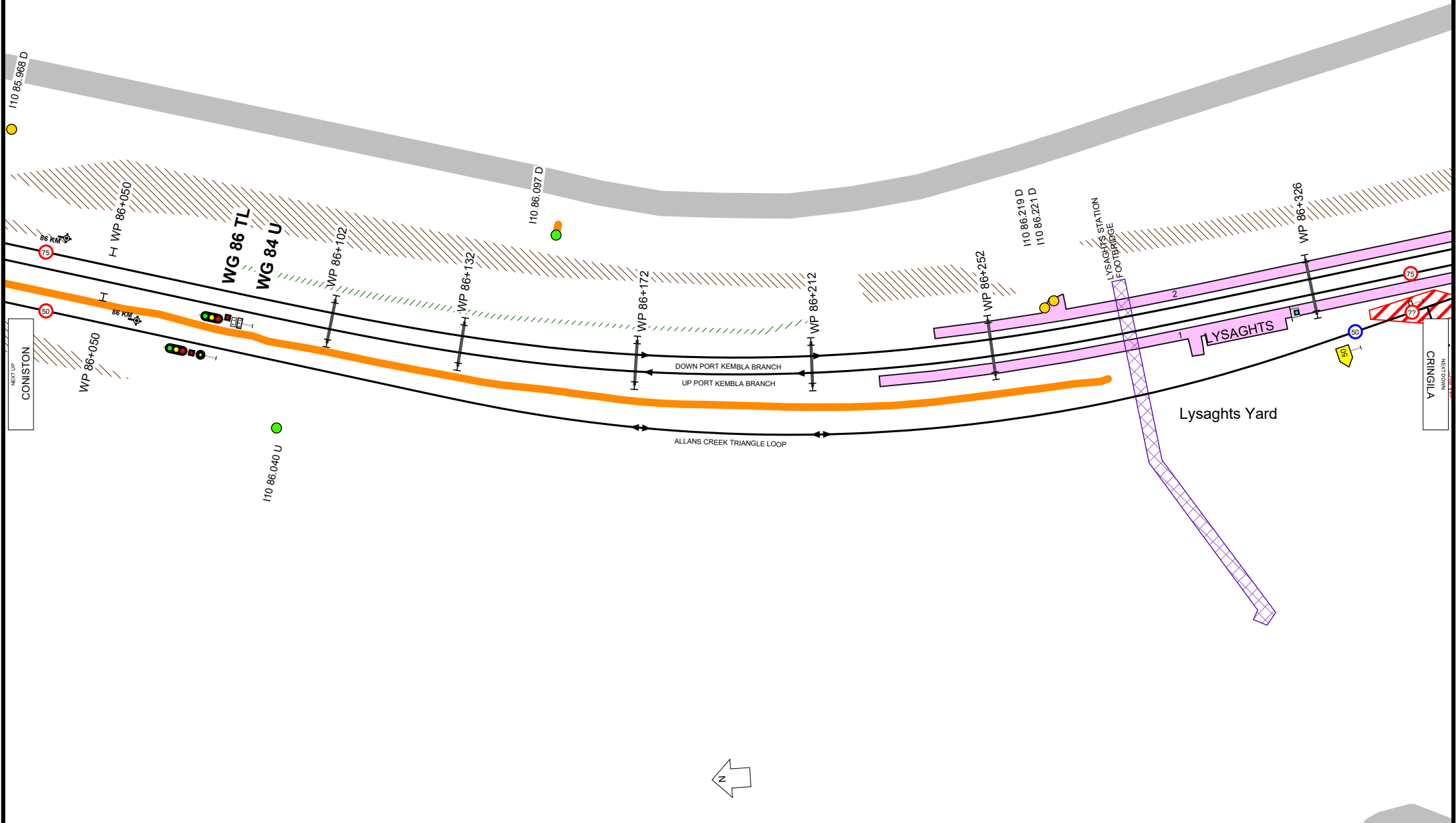
4



85.985km

86.137km

86.292km



NEXT UP  
CONISTON

NEXT DOWN  
CRINGILLA

Worksite Protection Planning Diagram  
Contact: rcp@transport.nsw.gov.au



Transport  
for NSW

**UNCONTROLLED WHEN PRINTED**

Data shown here may not have been field verified.  
Do not use for operational purposes without checking against a controlled document.  
For data issues contact GIS.Support@transport.nsw.gov.au

TITLE: **South Coast Line - Coniston Jct to Port Kembla - I10**

Page range 85.985-86.292km

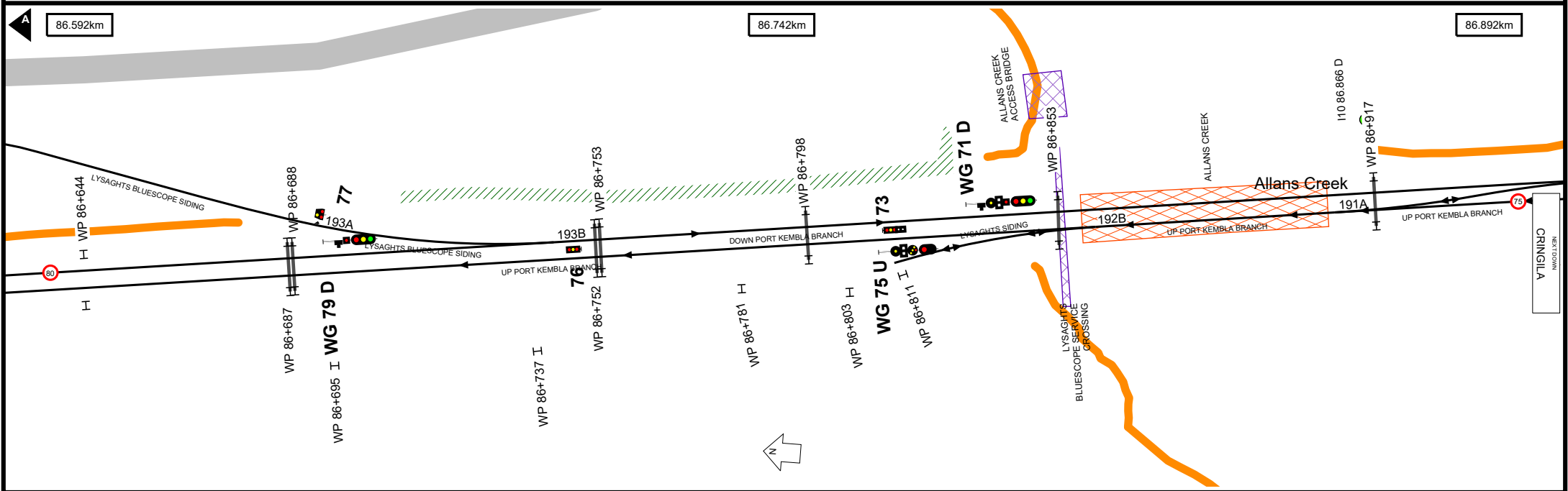
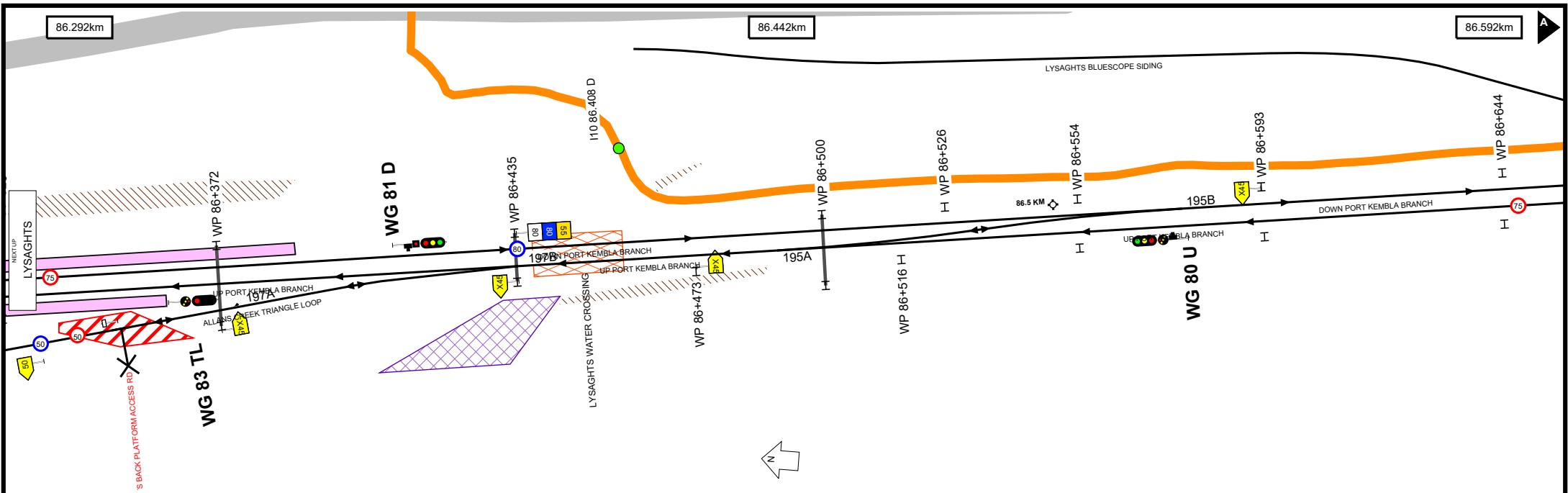
SCALE:



A4

30/07/2024

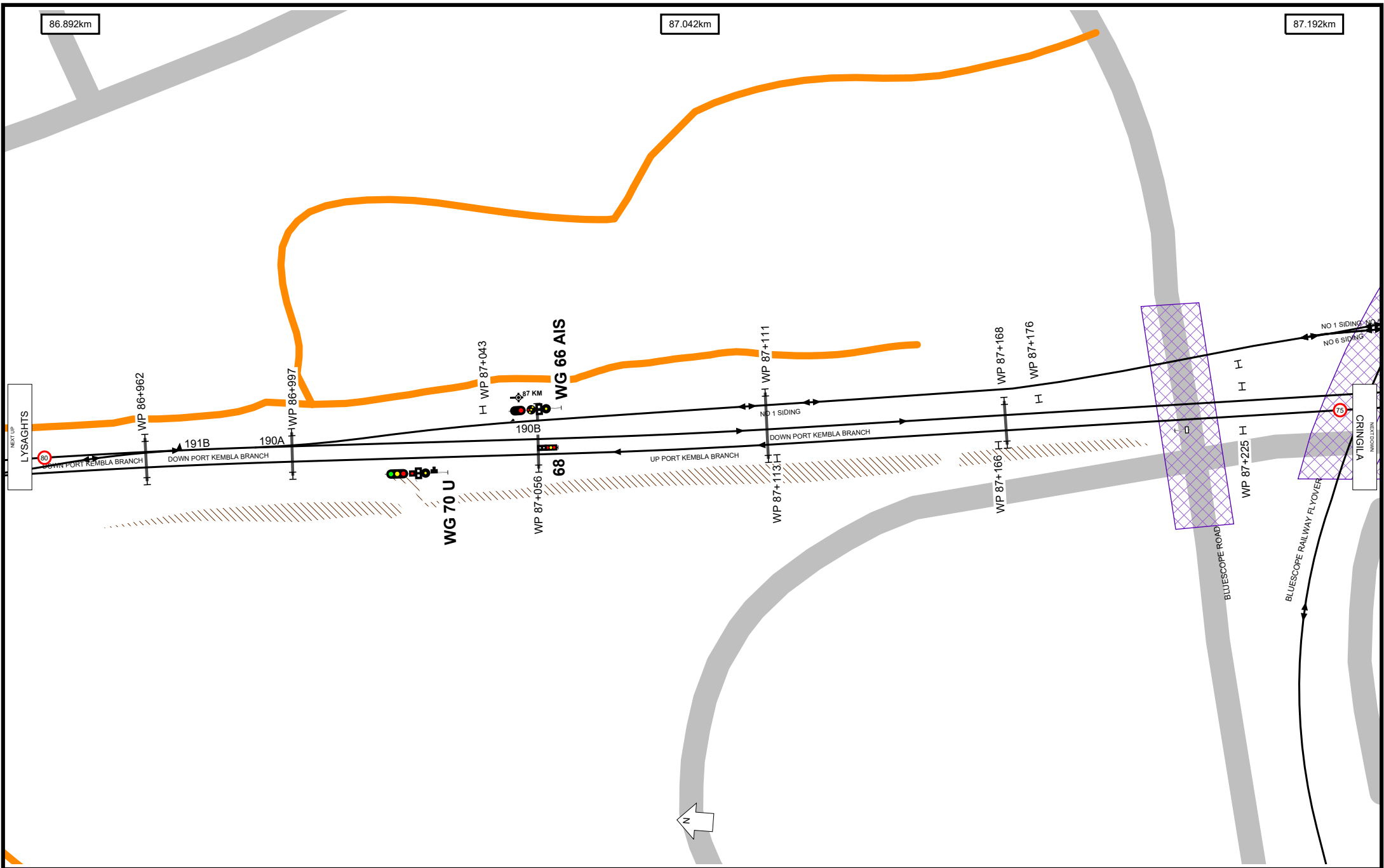
6



86.892km

87.042km

87.192km

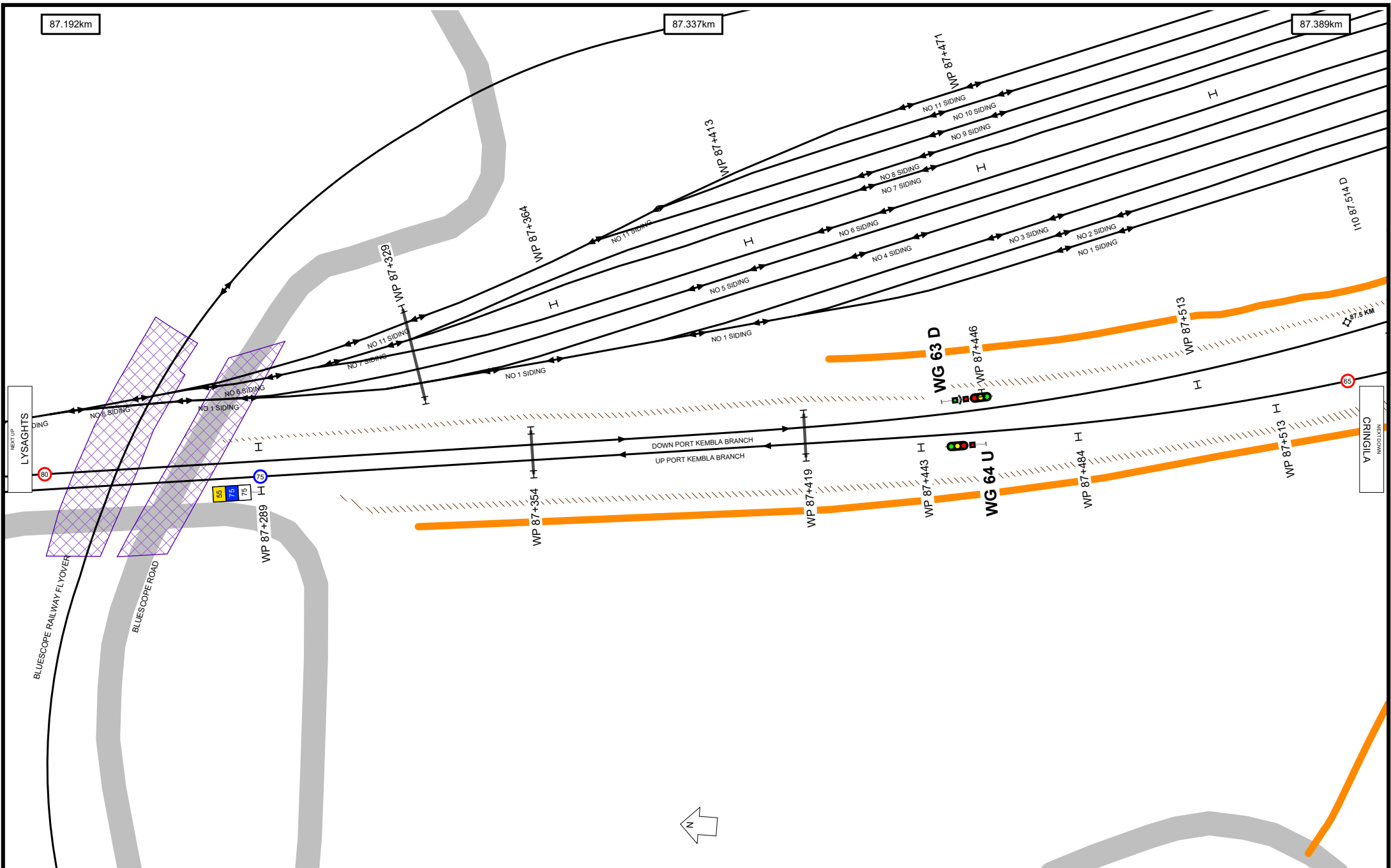


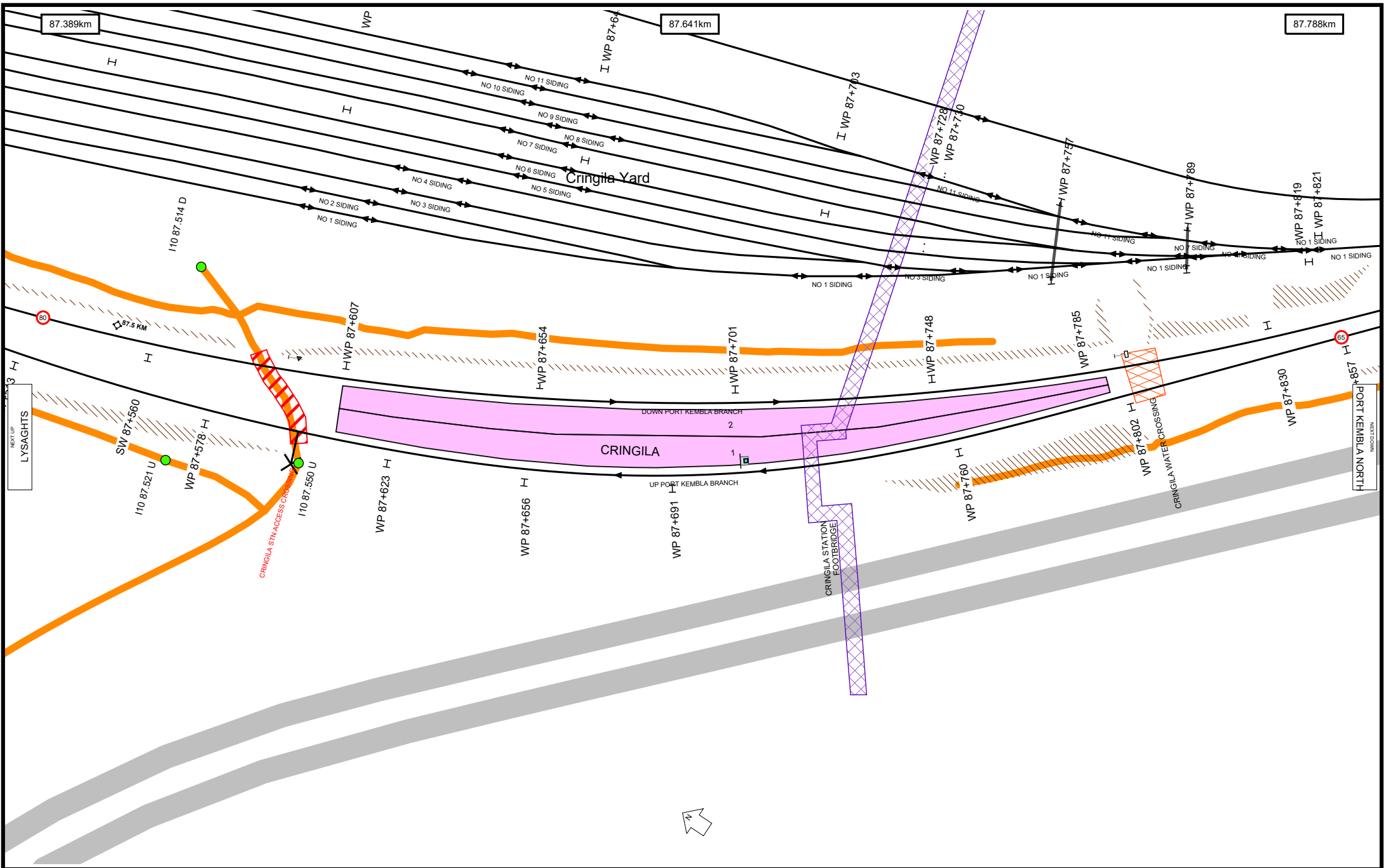
**UNCONTROLLED WHEN PRINTED**

Data shown here may not have been field verified.  
 Do not use for operational purposes without checking against a controlled document.  
 For data issues contact GIS.Support@transport.nsw.gov.au





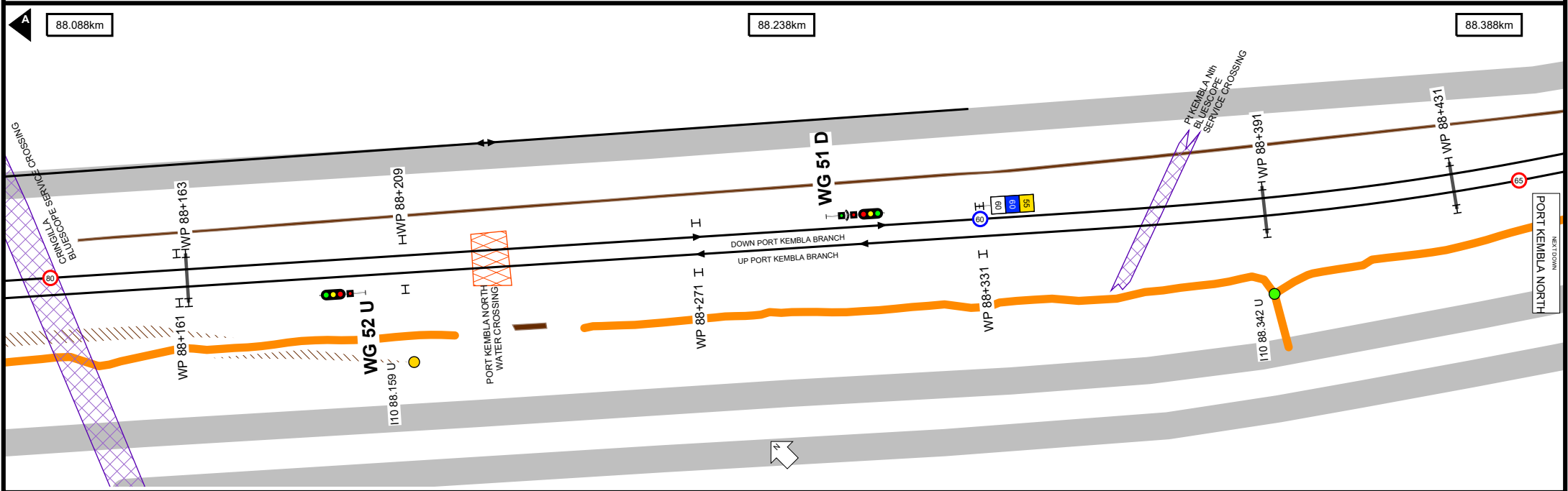
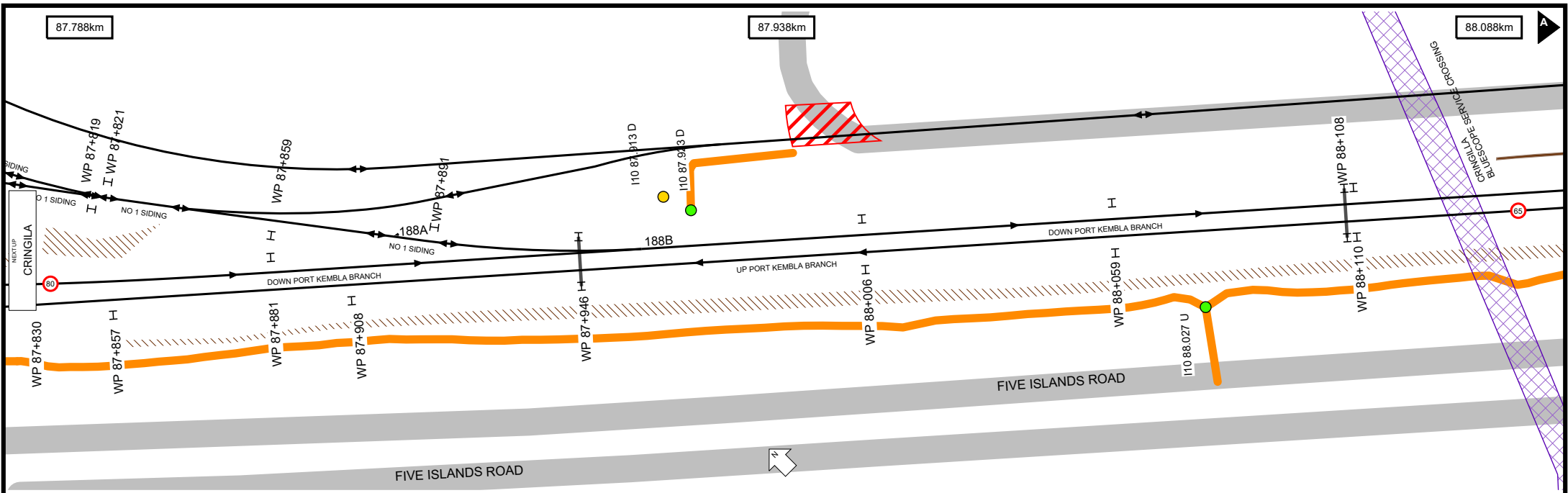


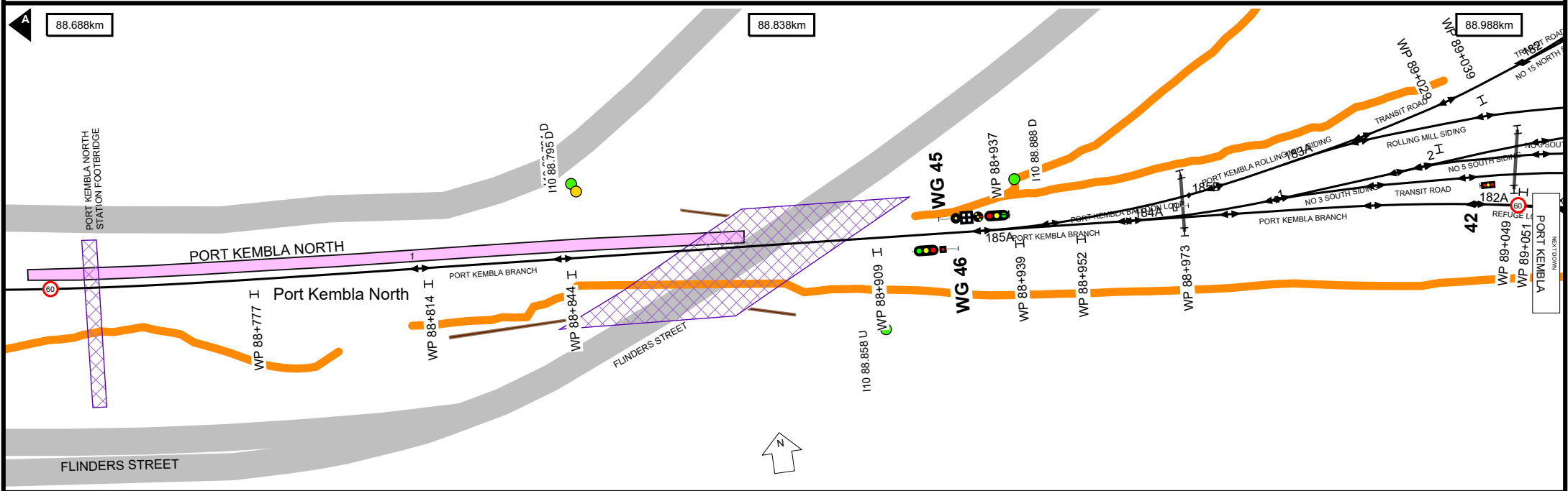
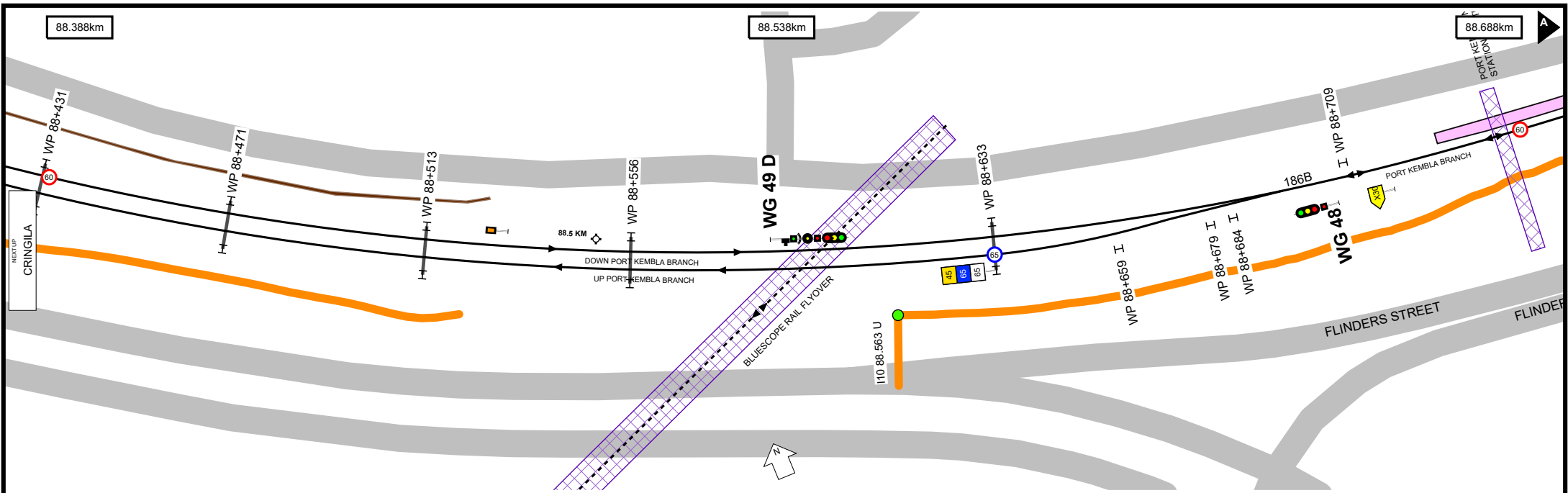


**UNCONTROLLED WHEN PRINTED**

Data shown here may not have been field verified.  
 Do not use for operational purposes without checking against a controlled document.  
 For data issues contact GIS.Support@transport.nsw.gov.au





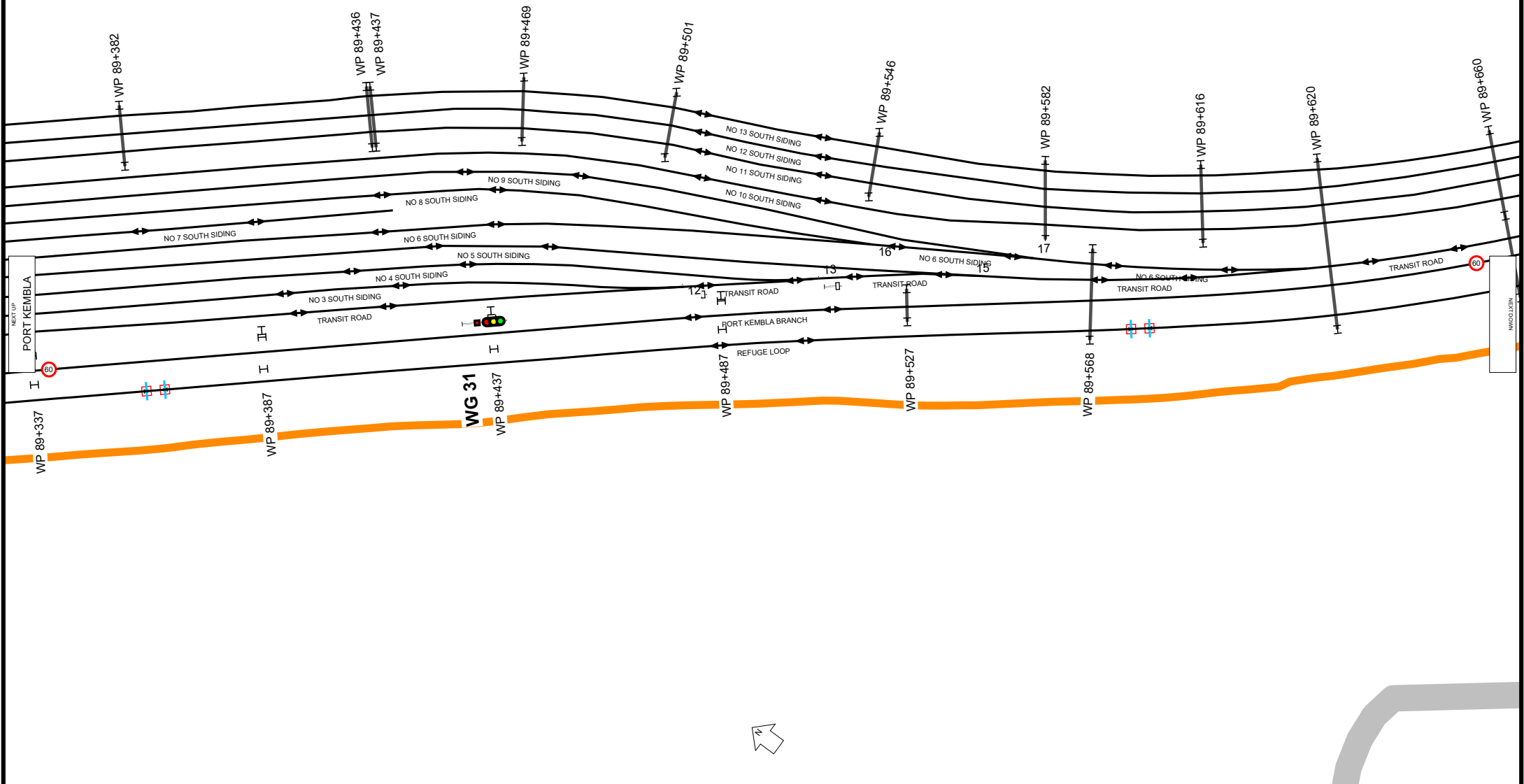




92.195km

92.356km

92.493km



**UNCONTROLLED WHEN PRINTED**

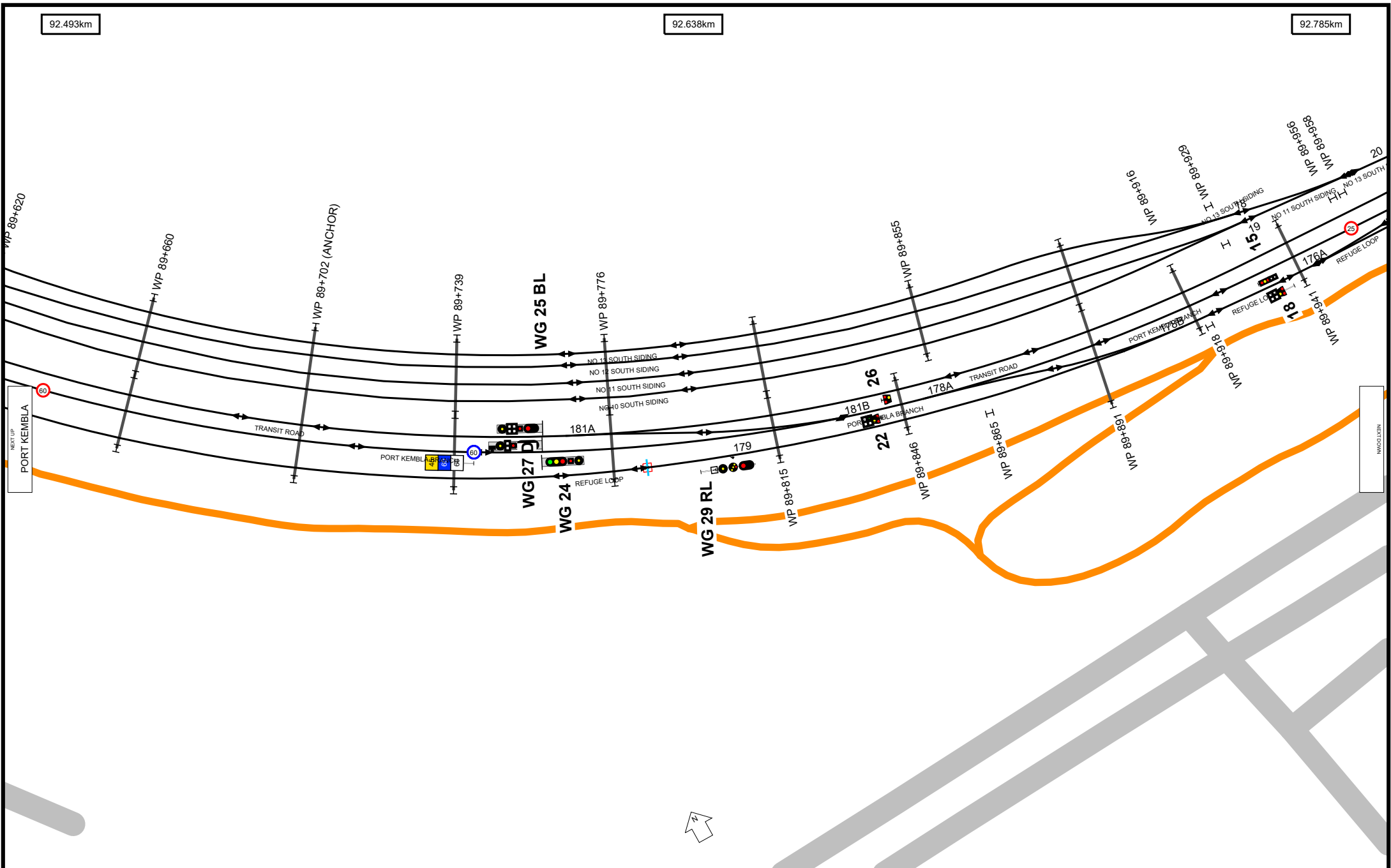
Data shown here may not have been field verified.  
 Do not use for operational purposes without checking against a controlled document.  
 For data issues contact GIS.Support@transport.nsw.gov.au



92.493km

92.638km

92.785km



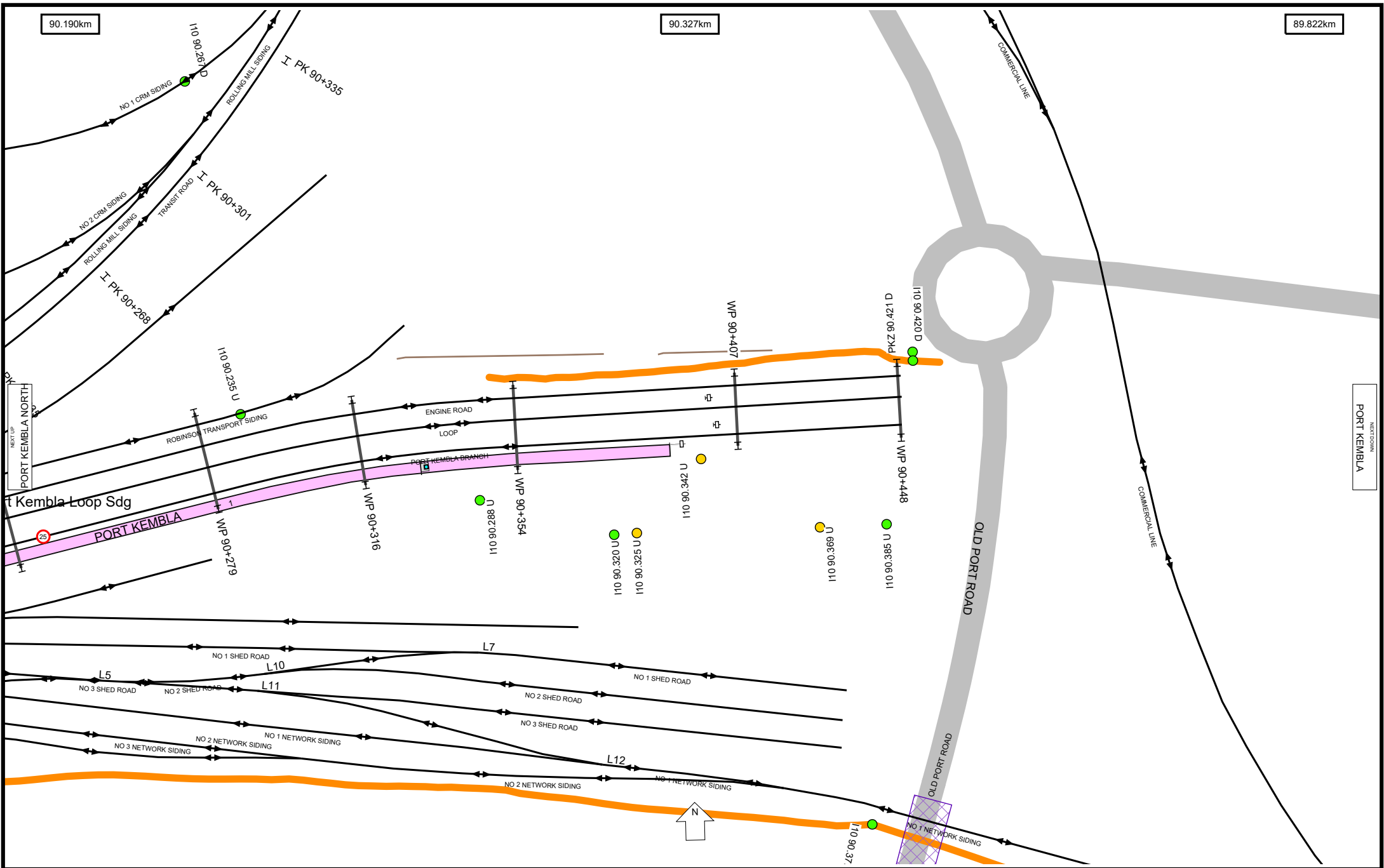
**UNCONTROLLED WHEN PRINTED**

Data shown here may not have been field verified.  
 Do not use for operational purposes without checking against a controlled document.  
 For data issues contact GIS.Support@transport.nsw.gov.au



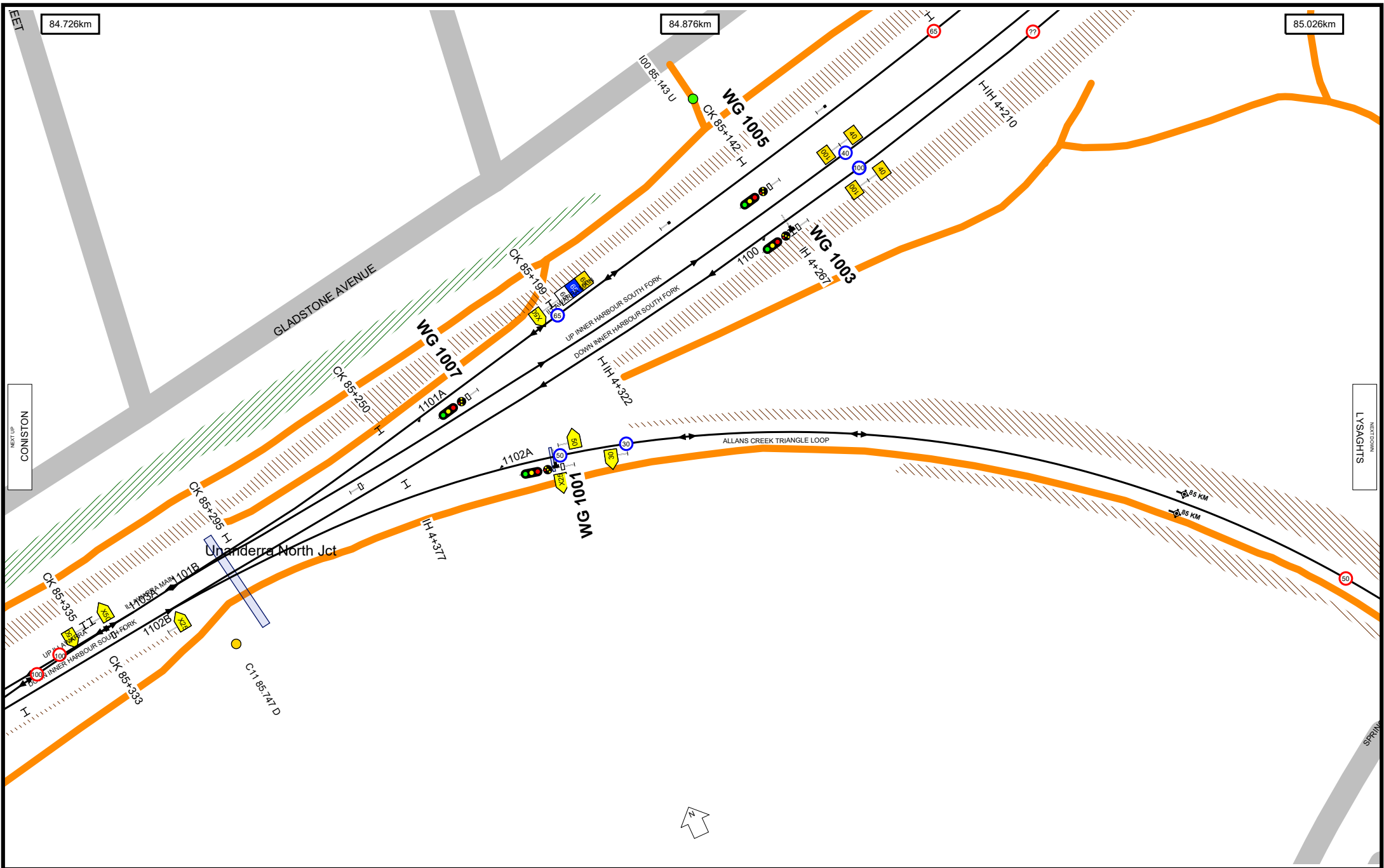






**UNCONTROLLED WHEN PRINTED**

Data shown here may not have been field verified.  
 Do not use for operational purposes without checking against a controlled document.  
 For data issues contact GIS.Support@transport.nsw.gov.au



84.726km

84.876km

85.026km

NEXT UP  
CONISTON

NEXT DOWN  
LYSAGHTS

Worksite Protection Planning Diagram  
Contact: rcsp@transport.nsw.gov.au



Transport for NSW

**UNCONTROLLED WHEN PRINTED**

Data shown here may not have been field verified.  
Do not use for operational purposes without checking against a controlled document.  
For data issues contact GIS.Support@transport.nsw.gov.au

TITLE:  
**South Coast Line - Unanderra North Jct & Triangle Loop**

Page range 84.726-85.026km

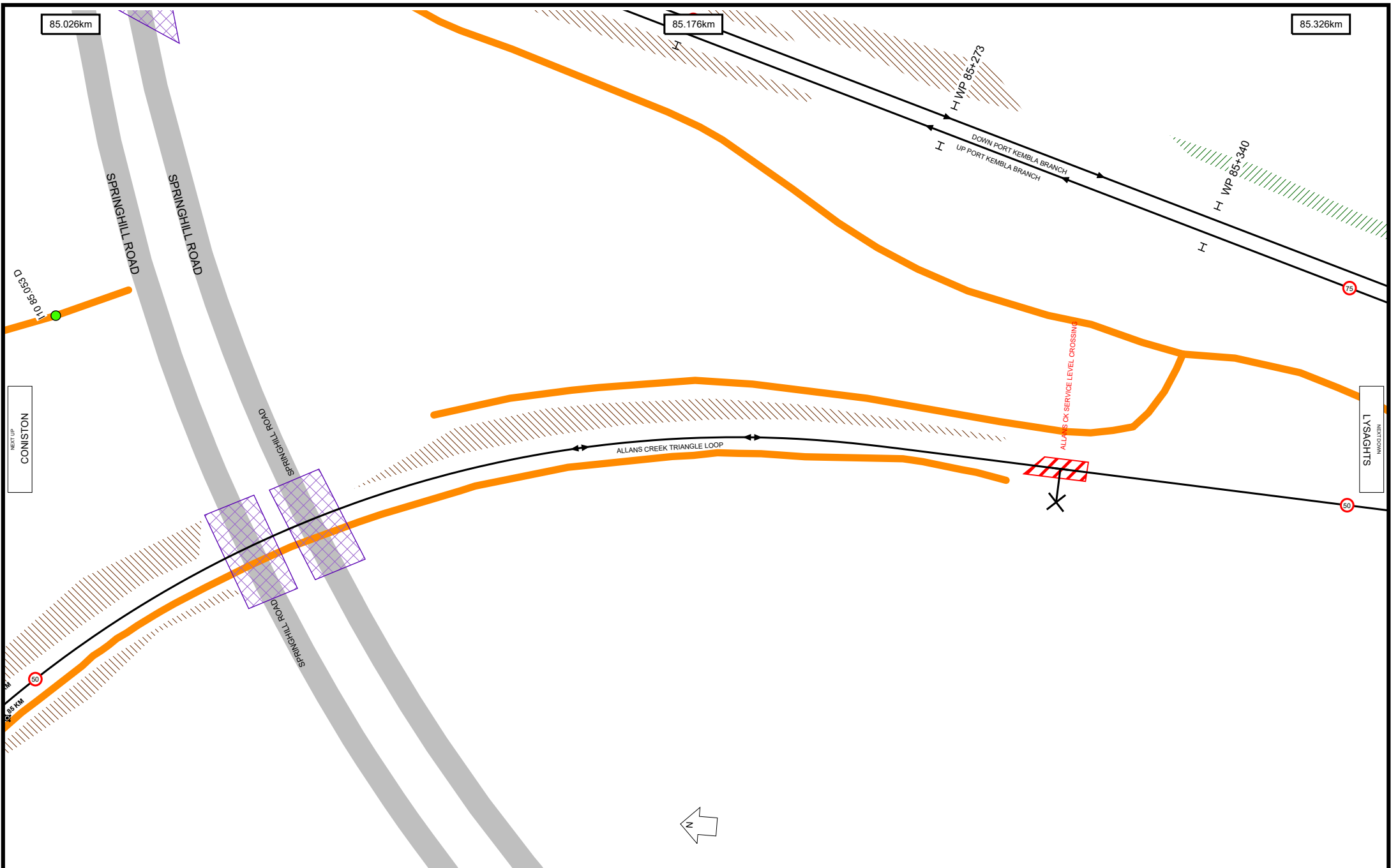
SCALE:



A4

30/07/2024

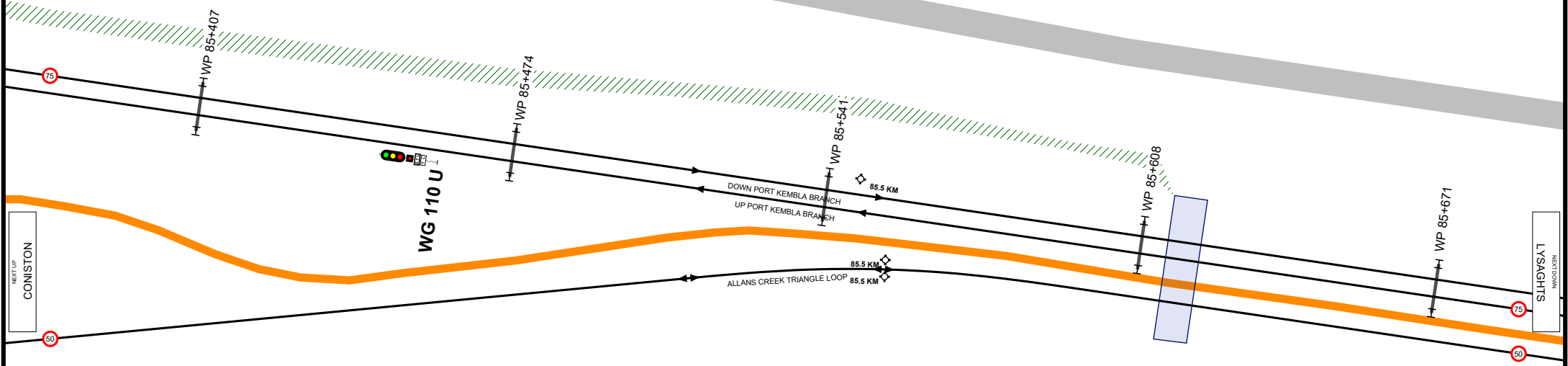
18



85.326km

85.476km

85.524km



**UNCONTROLLED WHEN PRINTED**

Data shown here may not have been field verified.  
 Do not use for operational purposes without checking against a controlled document.  
 For data issues contact GIS.Support@transport.nsw.gov.au



## Location Index

---

ALLANS CREEK	7
CONISTON JCT	2
CONISTON SUB STN	2
CONISTON TRACTION SUBSTATION	2
CRINGILA	10
CRINGILA YARD	10
INNER HARBOUR JCT	2
LYSAGHTS PLATFORM	6
LYSAGHTS YARD	6
PORT KEMBLA	17
PORT KEMBLA AUSTRALIAN FERTILIZERS NO 3	16
PORT KEMBLA B H P CRUSHER	16
PORT KEMBLA BOOM	16
PORT KEMBLA F/GANG	16
PORT KEMBLA LOCO	17
PORT KEMBLA LOOP SDG	16
PORT KEMBLA NIMMO	16
PORT KEMBLA NORTH	12
PORT KEMBLA NORTH NTH YARD	13
PORT KEMBLA NORTH STH YARD	12
PORT KEMBLA OUT HBR ANL	16
PORT KEMBLA PORTS CORP BOUNDARY IH TO UNJ	2
PORT KEMBLA ROBINSON ILLAWARRRA	
TRANS	16
UNANDERRA NORTH JCT	18

## Bridge Index

---

ALLANS CREEK	7
ALLANS CREEK ACCESS BRIDGE	7
BLUESCOPE RAIL FLYOVER	12
BLUESCOPE RAILWAY FLYOVER	8
BLUESCOPE ROAD	8
BRIDGE STREET	2
CRINGILA STATION FOOTBRIDGE	10
CRINGILA WATER CROSSING	10
CRINGILLA BLUESCOPE SERVICE CROSSING	11
FLINDERS STREET	12
INNER HARBOUR FLYOVER	3
LYSAGHTS BLUESCOPE SERVICE BRIDGE	5
LYSAGHTS BLUESCOPE SERVICE CROSSING	7
LYSAGHTS STATION FOOTBRIDGE	6
LYSAGHTS WATER CROSSING	7
OLD PORT ROAD	17
PORT KEMBLA NORTH STATION FOOTBRIDGE	12
PORT KEMBLA NORTH WATER CROSSING	11
PT KEMBLA NTH BLUESCOPE SERVICE CROSSING	11
SPRINGHILL ROAD	3

**Track & Point**

- Existing Track Centreline
- Under Construction Track
- Proposed Track
- Turnout Point
- Catch Point
- Derail Point
- Turntable

**Signal & Sign**

- Signal
- Warning Light
- Warning Light - Double
- End Yard Limit Sign
- Yard Limit Sign
- Speed Sign

**Station**

- Platform

**Kilometre Post**

- Whole Kilometre Post
- Half Kilometre Post

**Corridor Access**

- Access Gate
- Pedestrian Access Gate
- Access Road

**Safety**

- Refuge

**Road**

- Public Road

**Level Crossing & Take Off**

- Level Crossing Boundary
- Level Crossing Location

**Bridge**

- Overbridge
- Underbridge
- Rail Flyover
- Rail Dive
- Pedestrian Footbridge
- Pedestrian Subway

**Tunnel**

- Tunnel Section Coverage

**Embankment**

- Embankment

**Cutting**

- Cutting

**Wall**

- Wall

**Culvert**

- Culvert

**Waterway**

- Waterway

**Substation**

- Substation Boundary

**Overhead Wiring Structure**

- OHWS
- OHWS Centreline
- Wood Pole

**Additional Map Features**

- Track Name & Direction Indicator
- Maximum Train Entry Speed Indicator
- Maximum Train Speed Change Indicator
- Kilometrage Reference Indicator
- Map Strip Join Indicator
- Next Station Up
- Next Station Down