

Worksite Protection Planning Diagrams

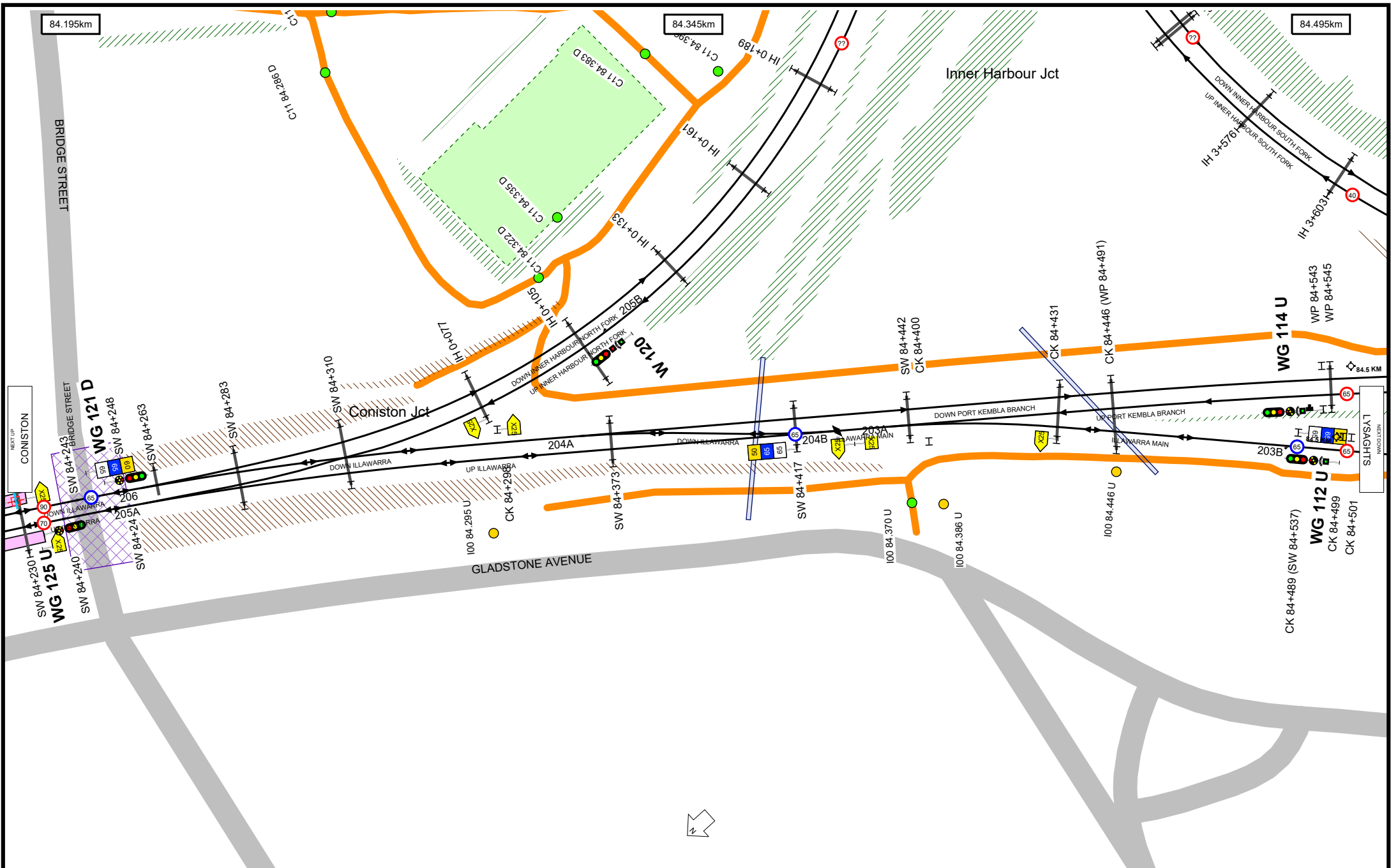
South Coast Line - Coniston Jct to Port Kembla including Unanderra North Jct - I10

Stations Covered

CONISTON	2
LYSAGHTS	6
CRINGILA	10
PORT KEMBLA NORTH	12
PORT KEMBLA	17

Kilometrage References

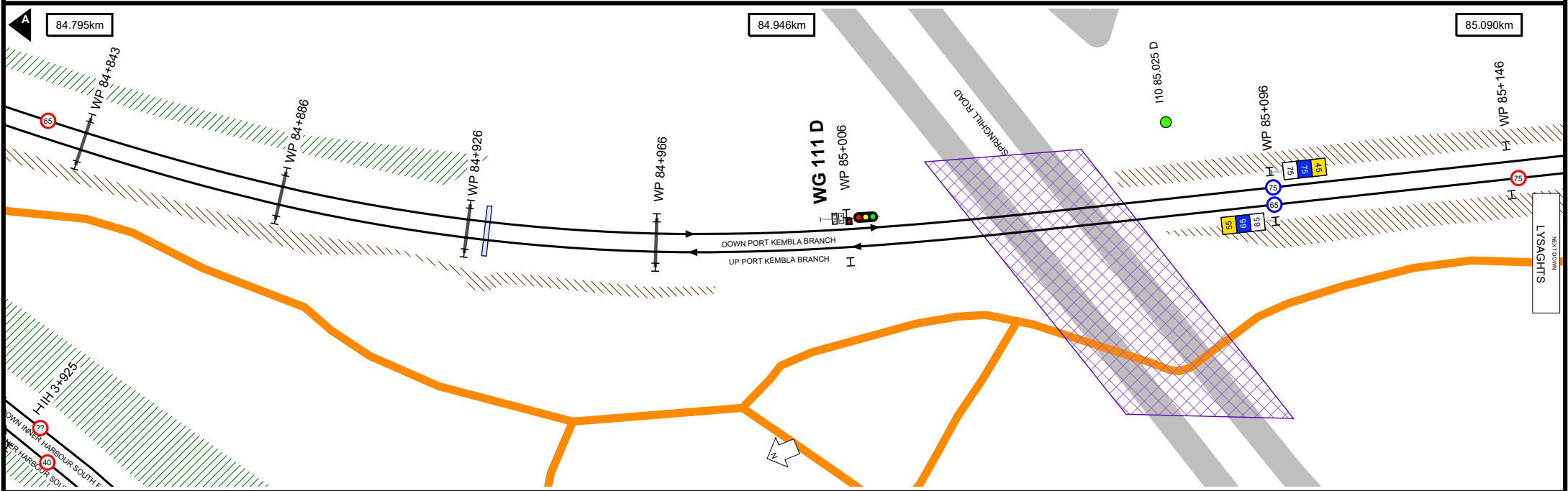
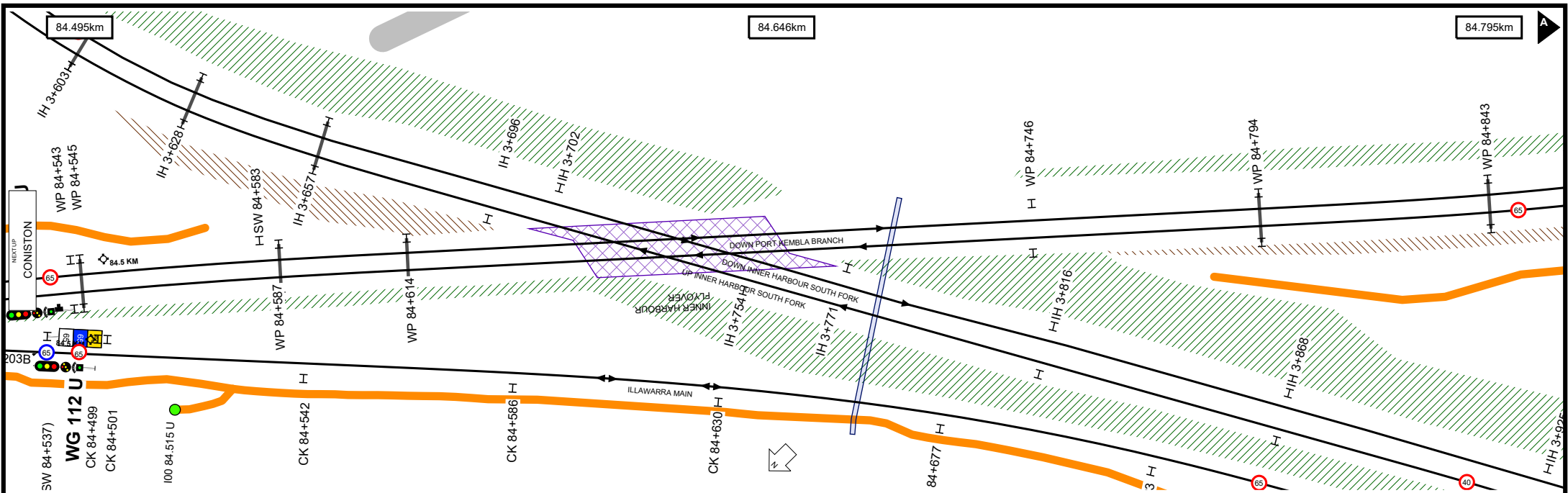
84.195km	2
85.000km	3
90.000km	13
85.524km	5



UNCONTROLLED WHEN PRINTED

Data shown here may not have been field verified.
 Do not use for operational purposes without checking against a controlled document.
 For data issues contact GIS.Support@transport.nsw.gov.au

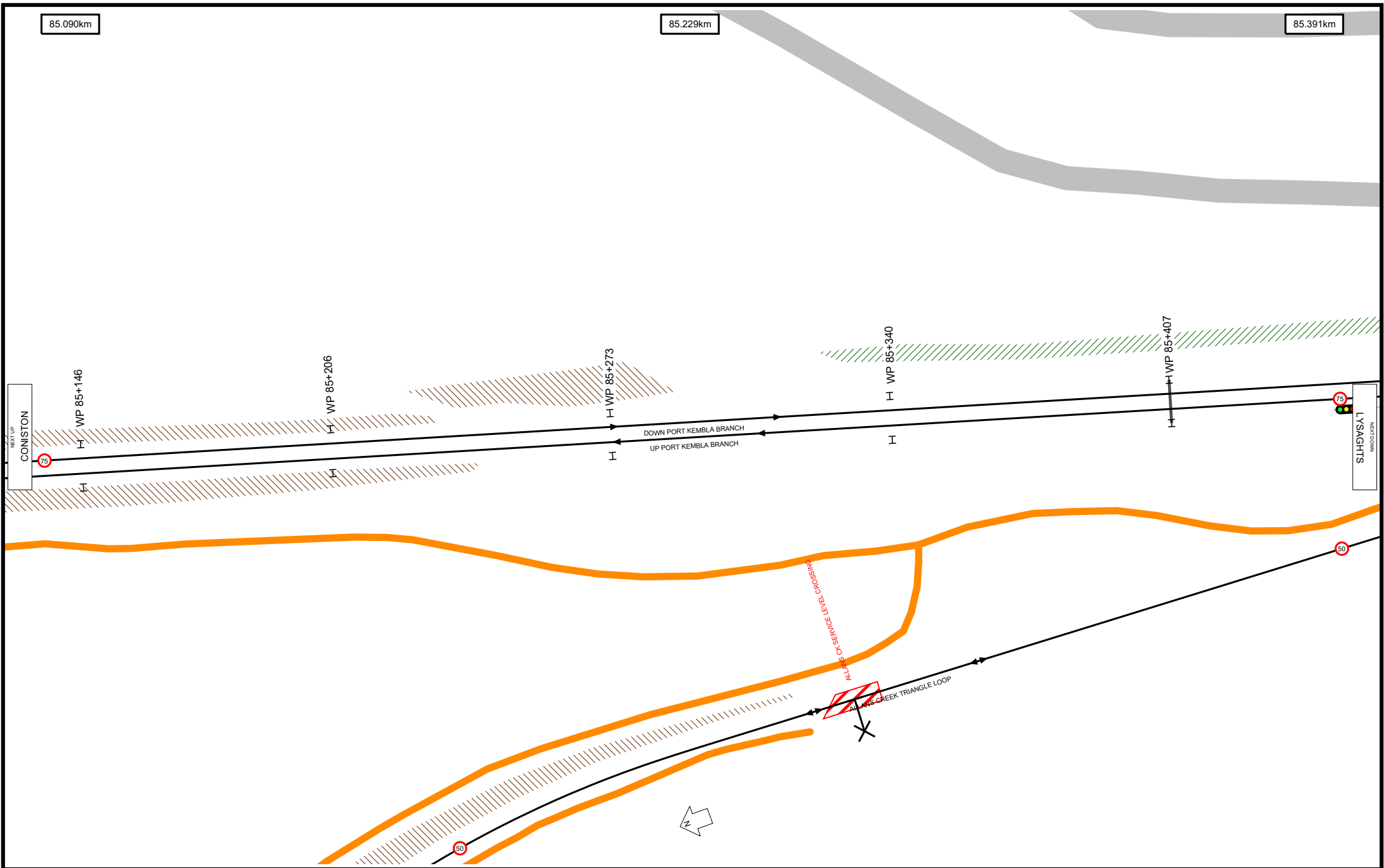




85.090km

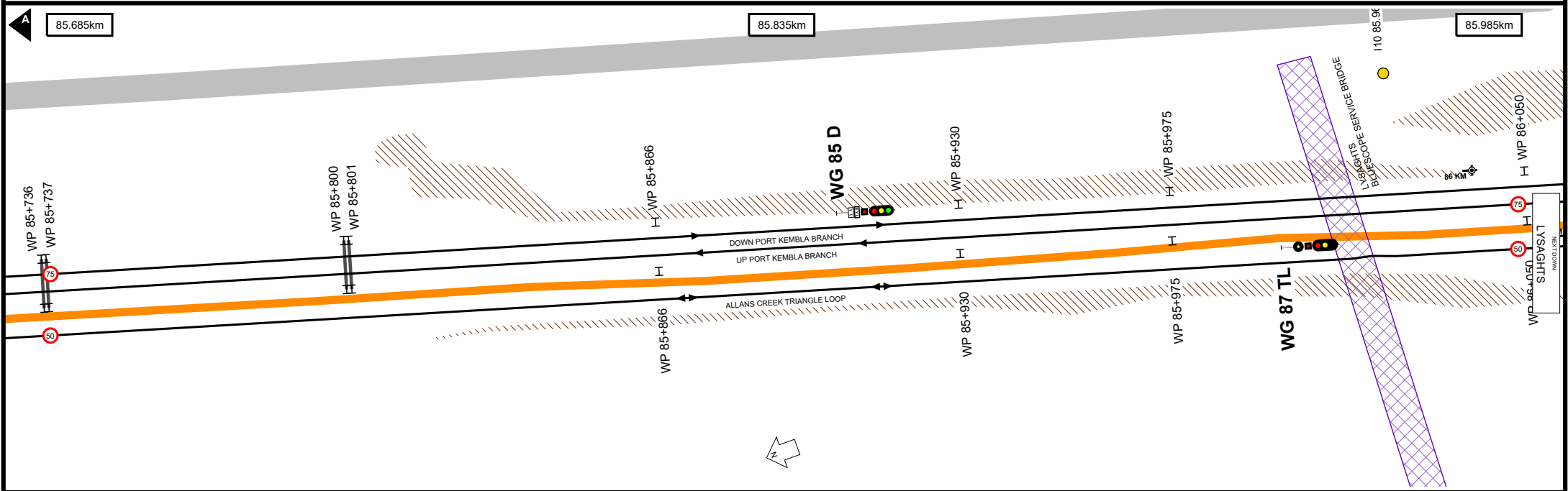
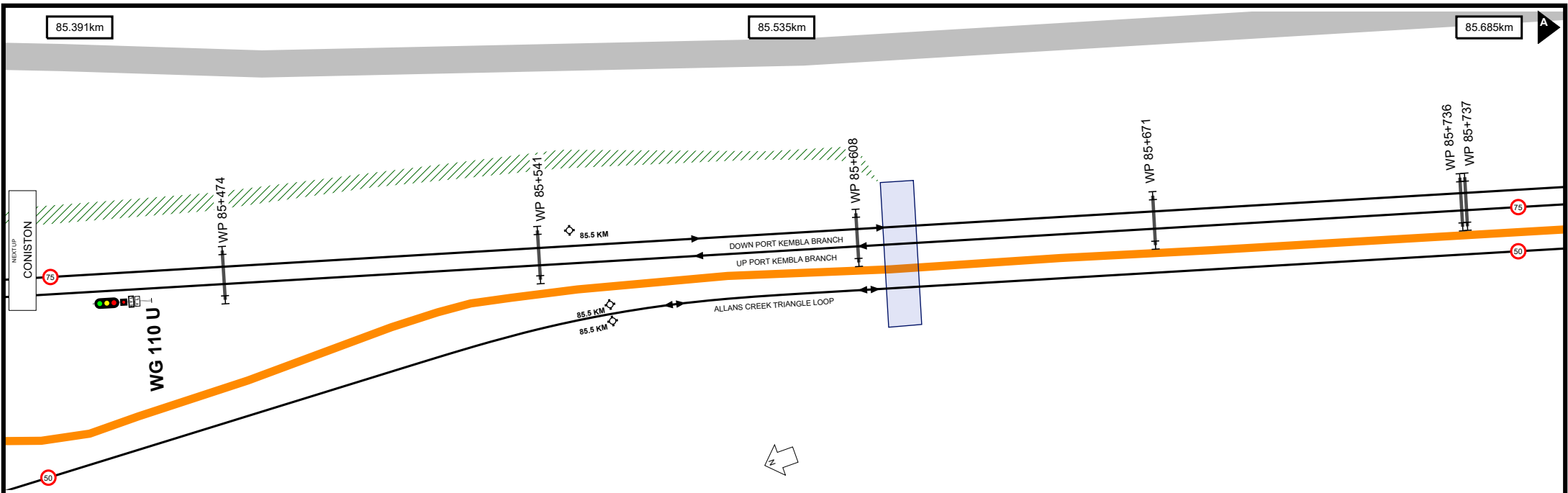
85.229km

85.391km



UNCONTROLLED WHEN PRINTED

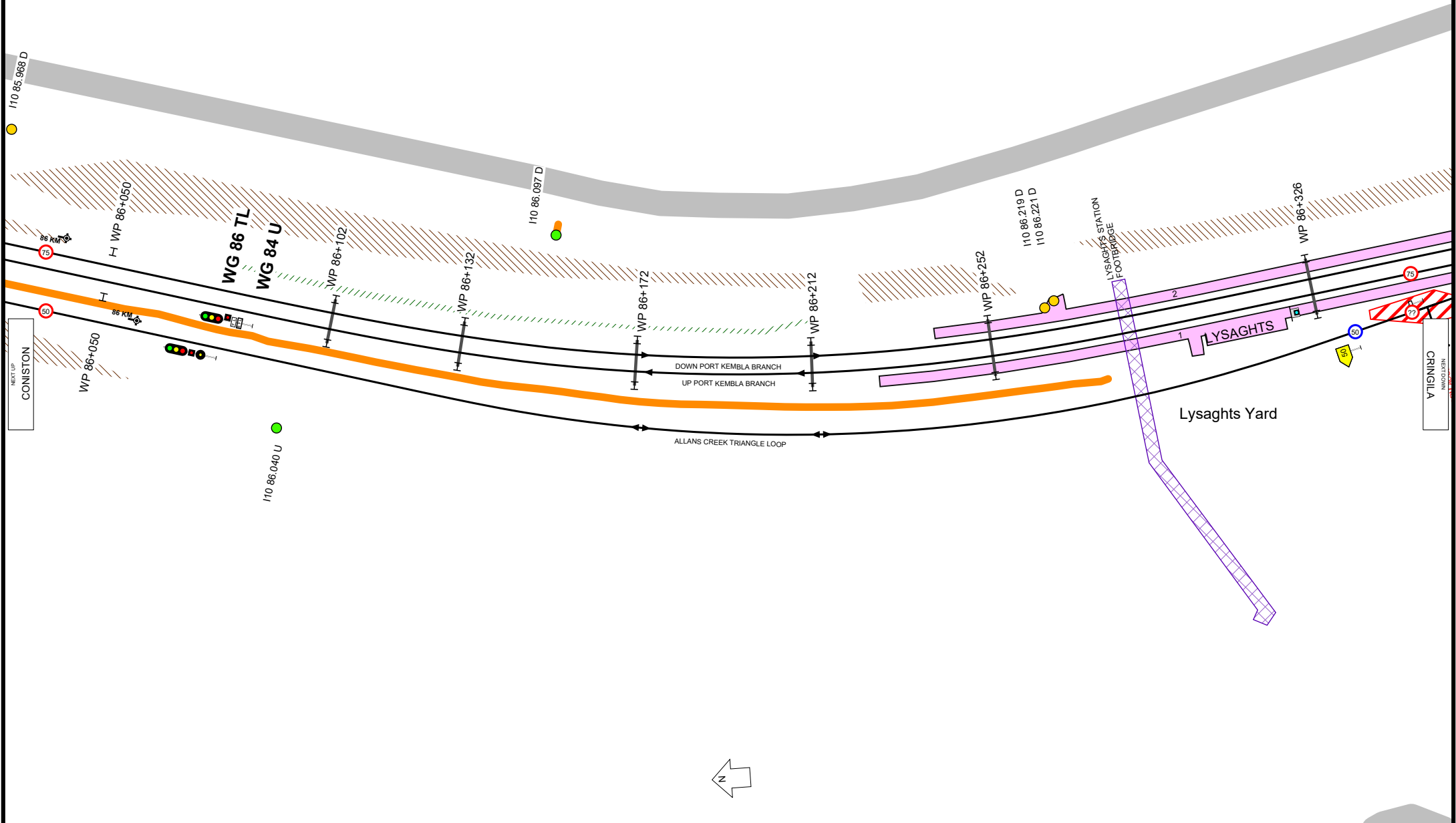
Data shown here may not have been field verified.
 Do not use for operational purposes without checking against a controlled document.
 For data issues contact GIS.Support@transport.nsw.gov.au



85.985km

86.137km

86.292km



NEXT UP
CONISTON

NEXT DOWN
CRINGILLA

Worksite Protection Planning Diagram
Contact: rcp@transport.nsw.gov.au



Transport
for NSW

UNCONTROLLED WHEN PRINTED

Data shown here may not have been field verified.
Do not use for operational purposes without checking against a controlled document.
For data issues contact GIS.Support@transport.nsw.gov.au

TITLE: **South Coast Line - Coniston Jct to Port Kembla - I10**

Page range 85.985-86.292km

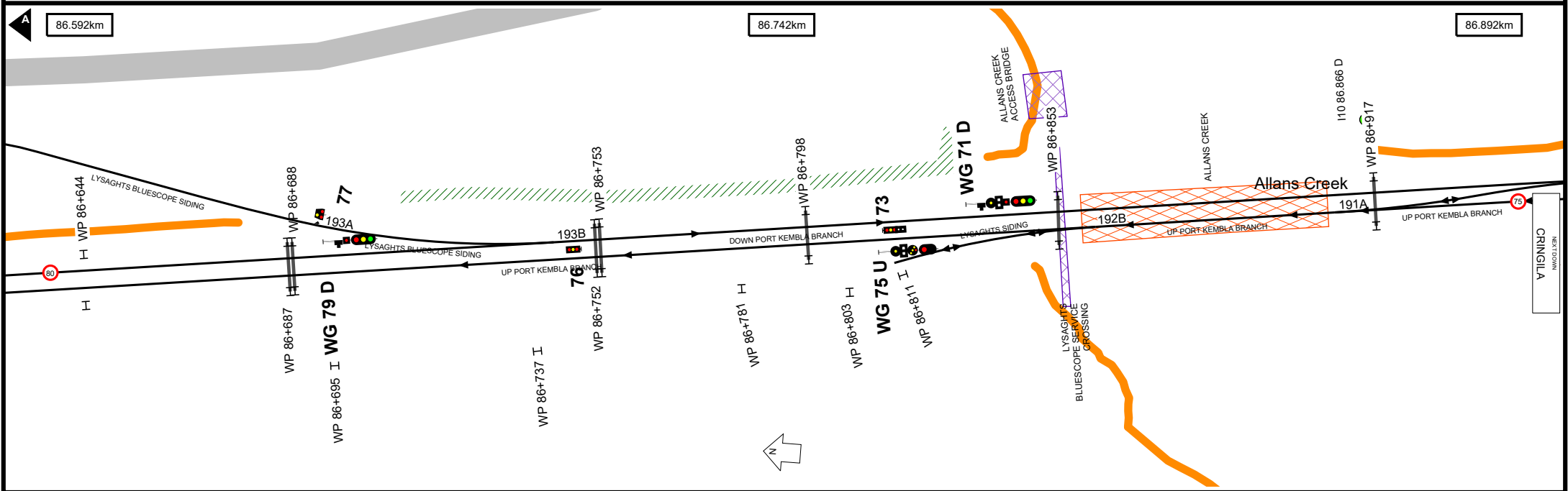
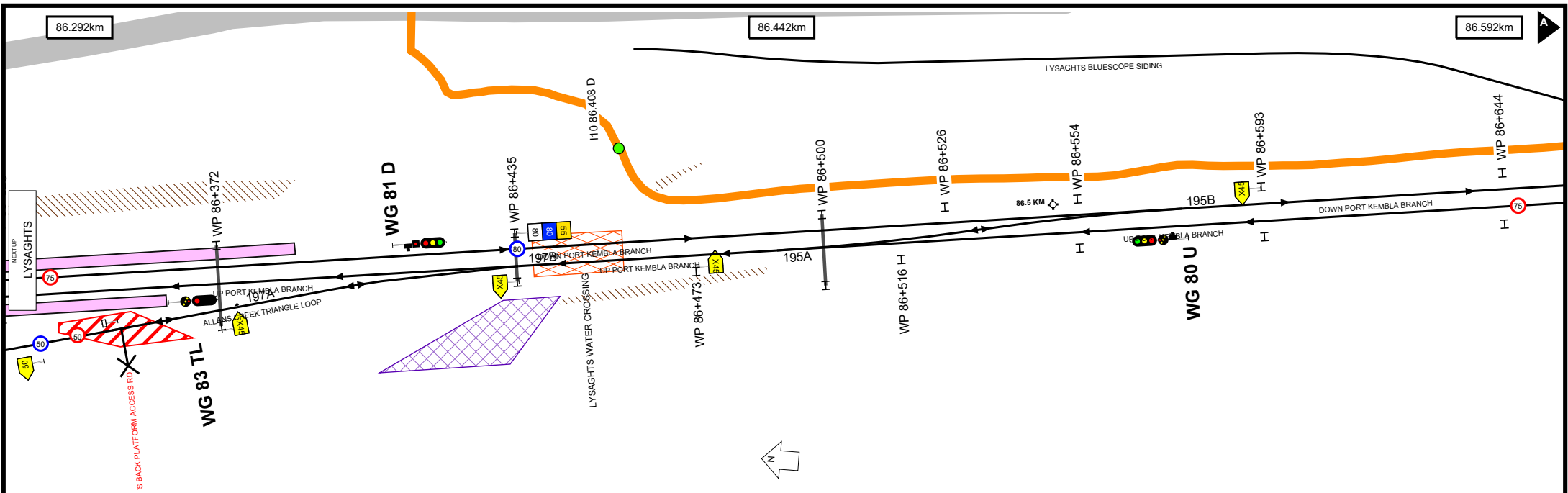
SCALE:



A4

19/12/2023

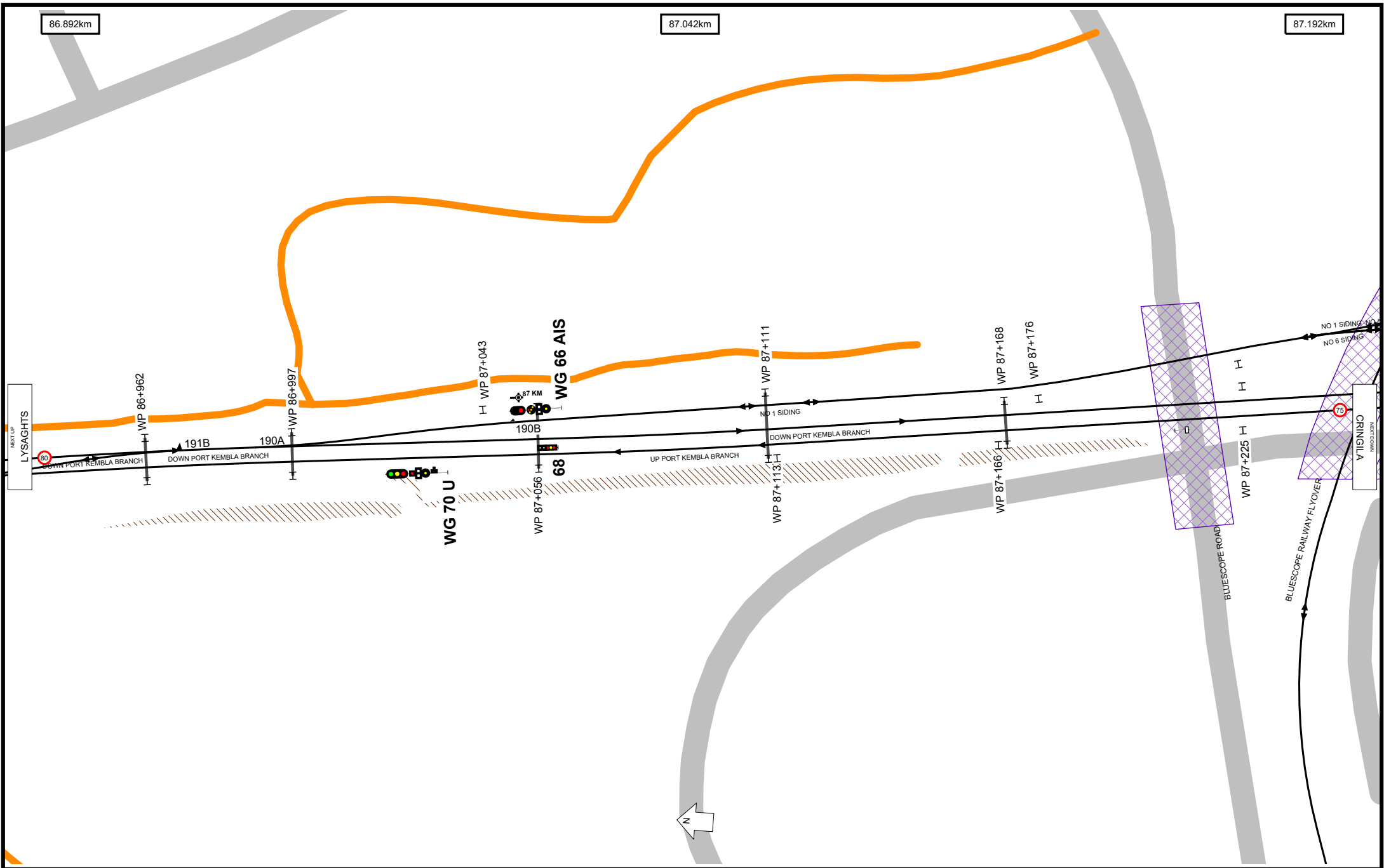
6



86.892km

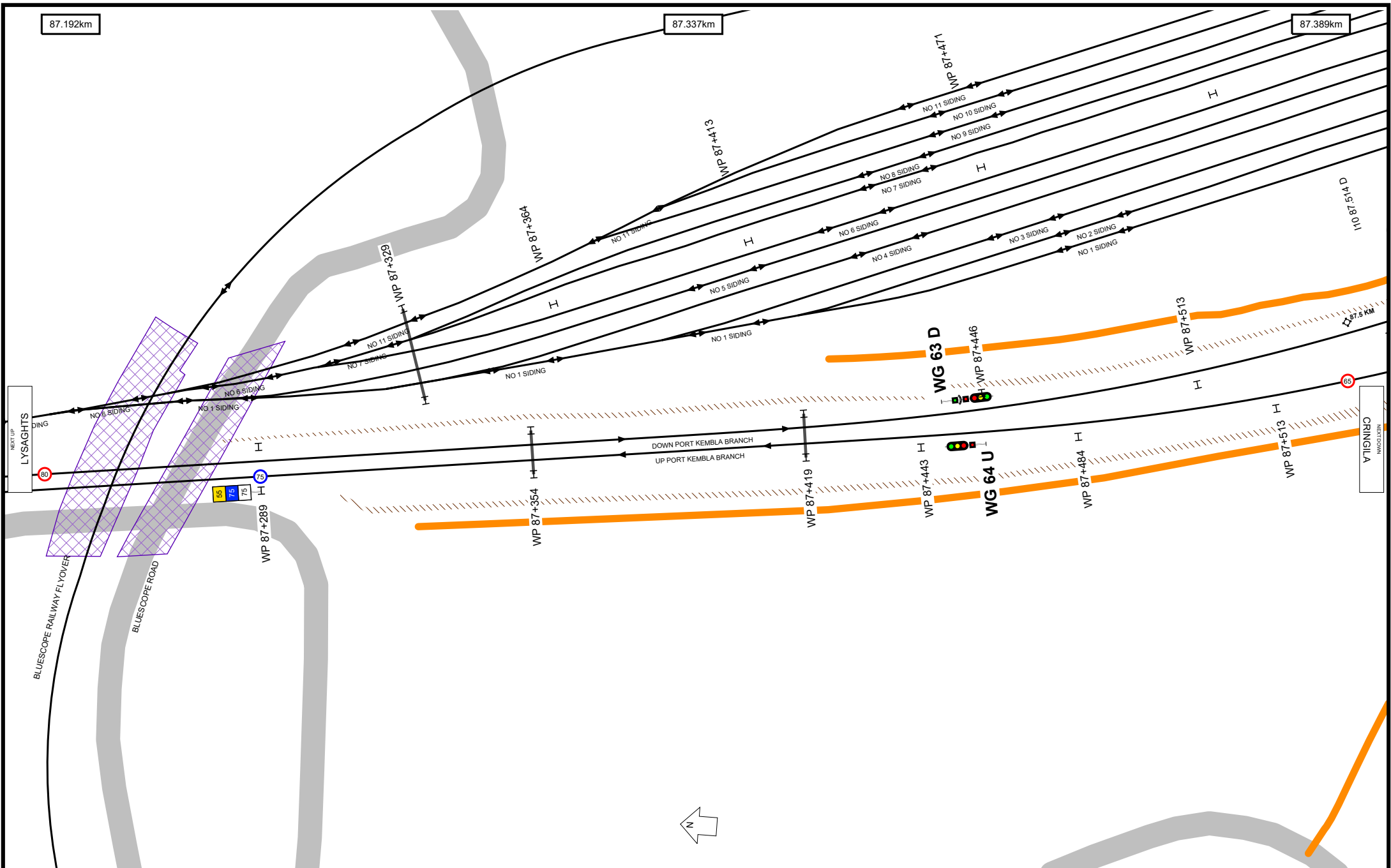
87.042km

87.192km



UNCONTROLLED WHEN PRINTED

Data shown here may not have been field verified.
 Do not use for operational purposes without checking against a controlled document.
 For data issues contact GIS.Support@transport.nsw.gov.au



87.192km

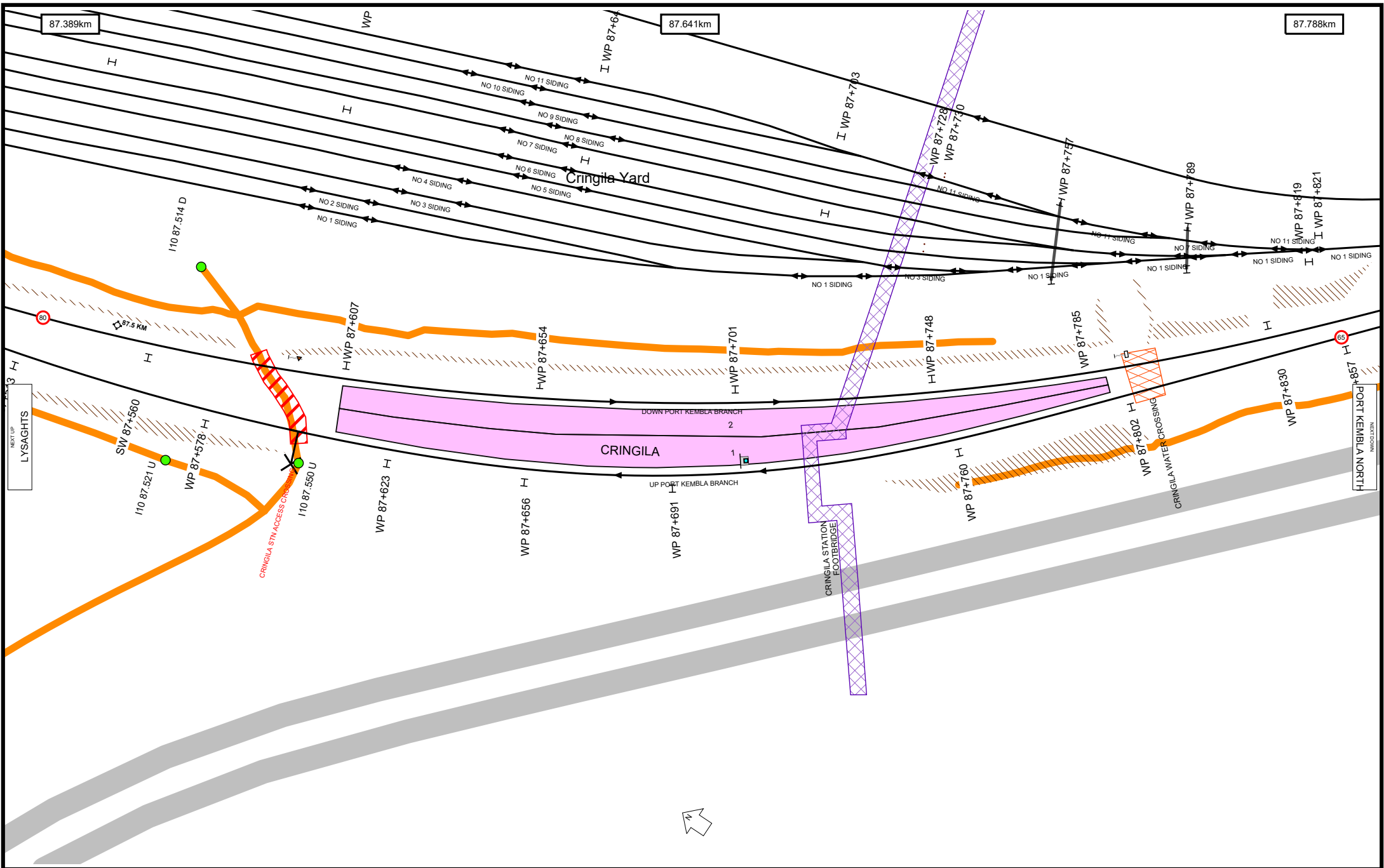
87.337km

87.389km

LYSAGHTS

CRINGILLA

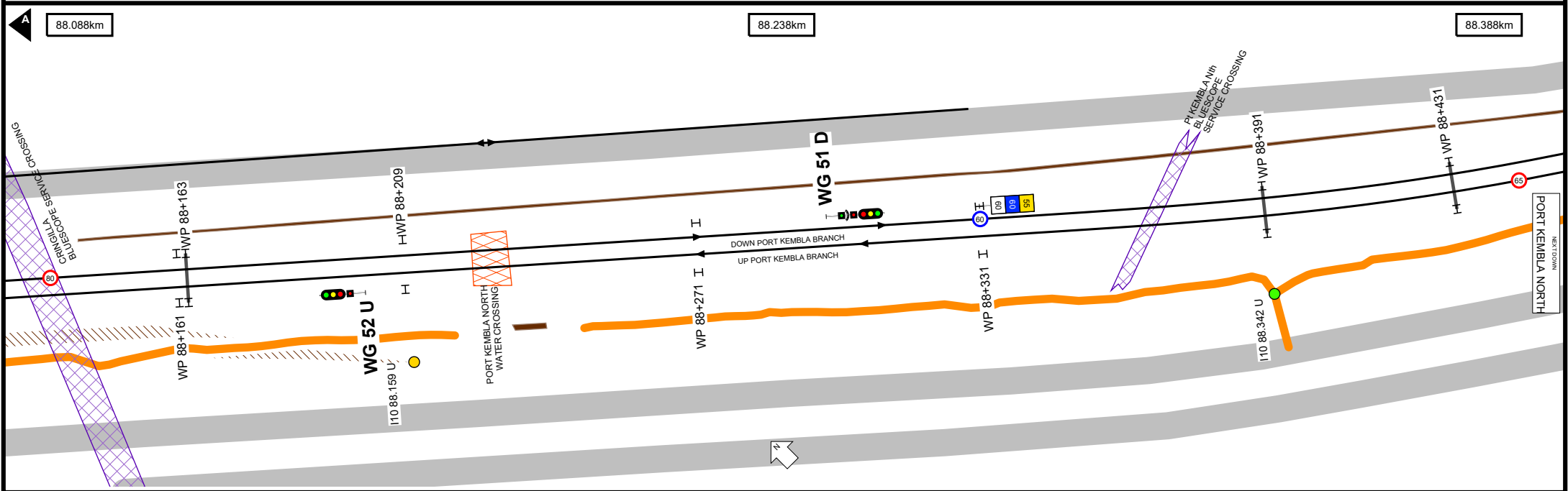
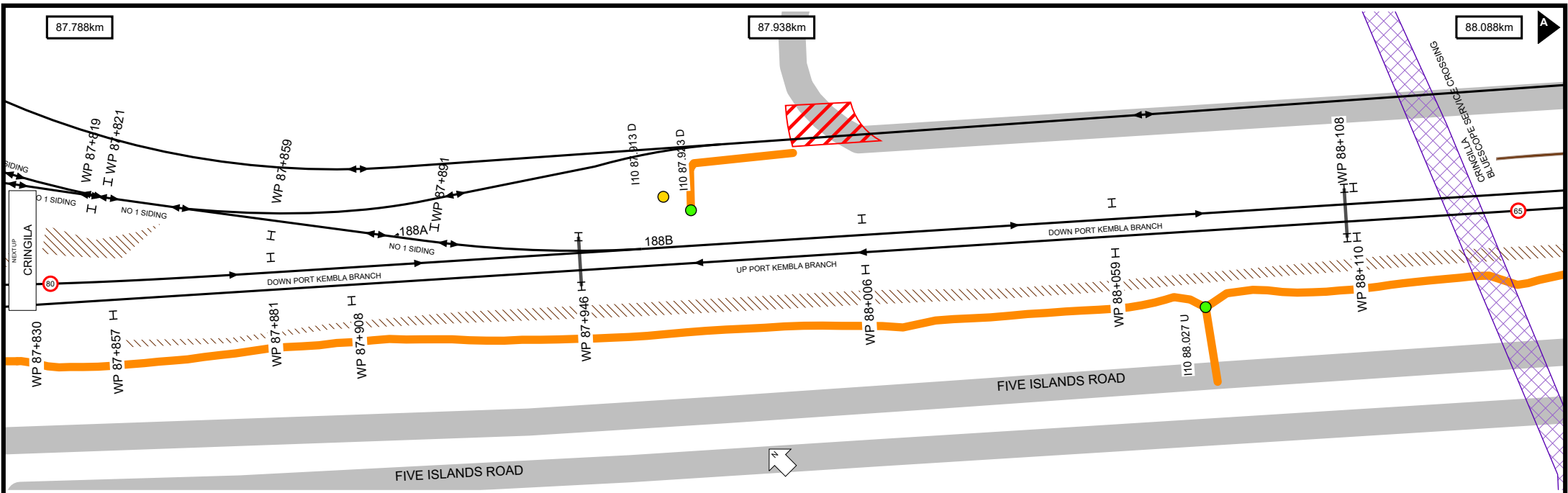


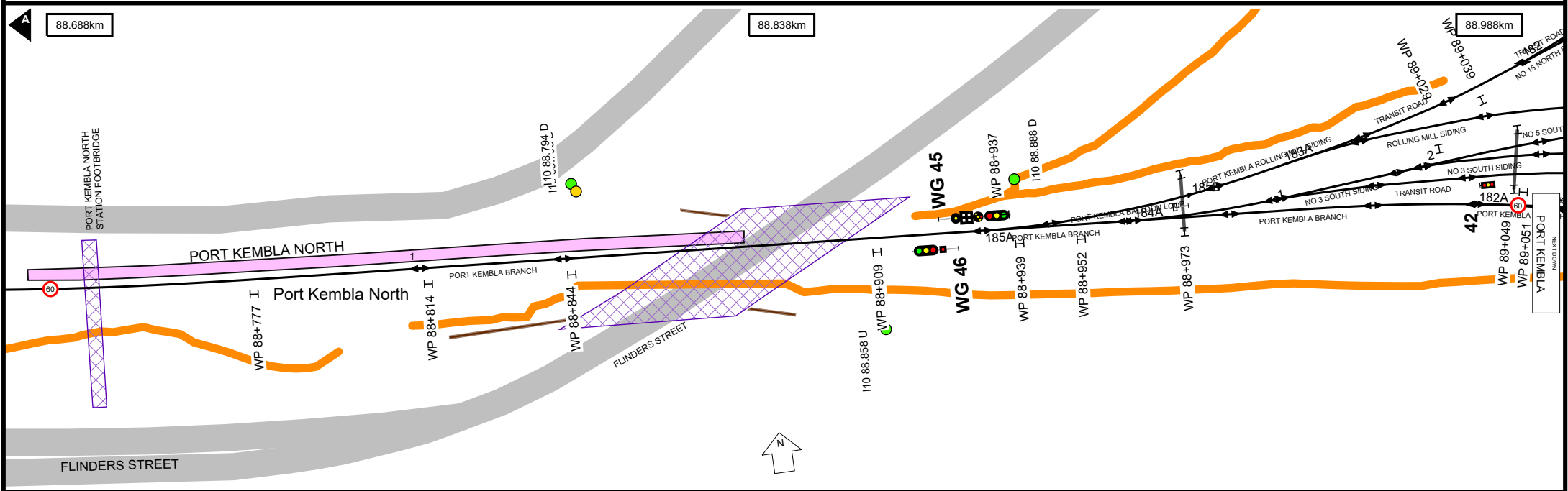
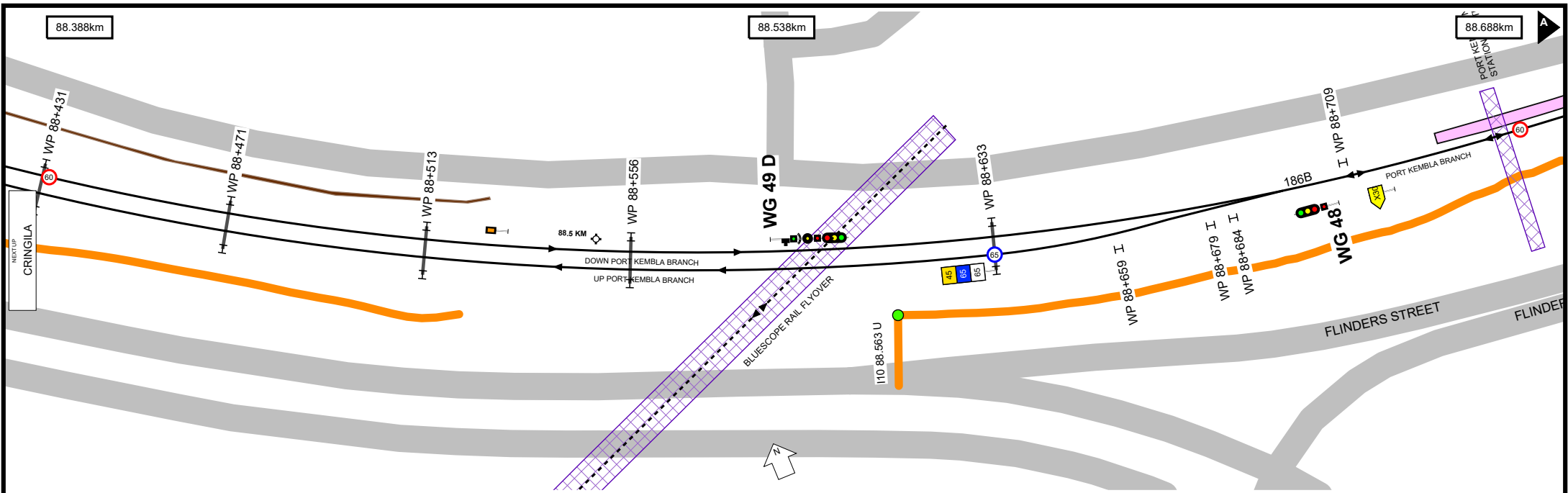


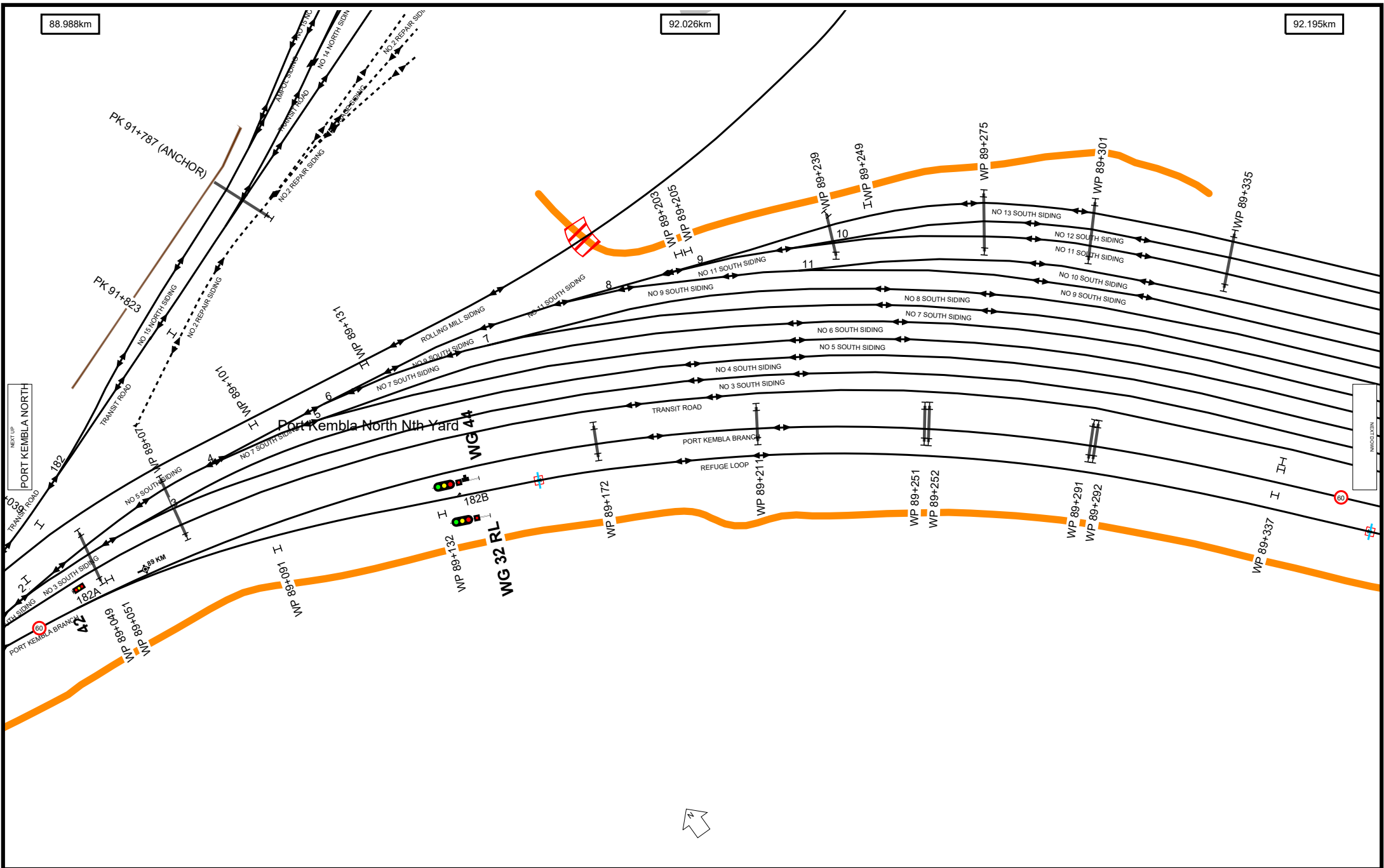
UNCONTROLLED WHEN PRINTED

Data shown here may not have been field verified.
 Do not use for operational purposes without checking against a controlled document.
 For data issues contact GIS.Support@transport.nsw.gov.au









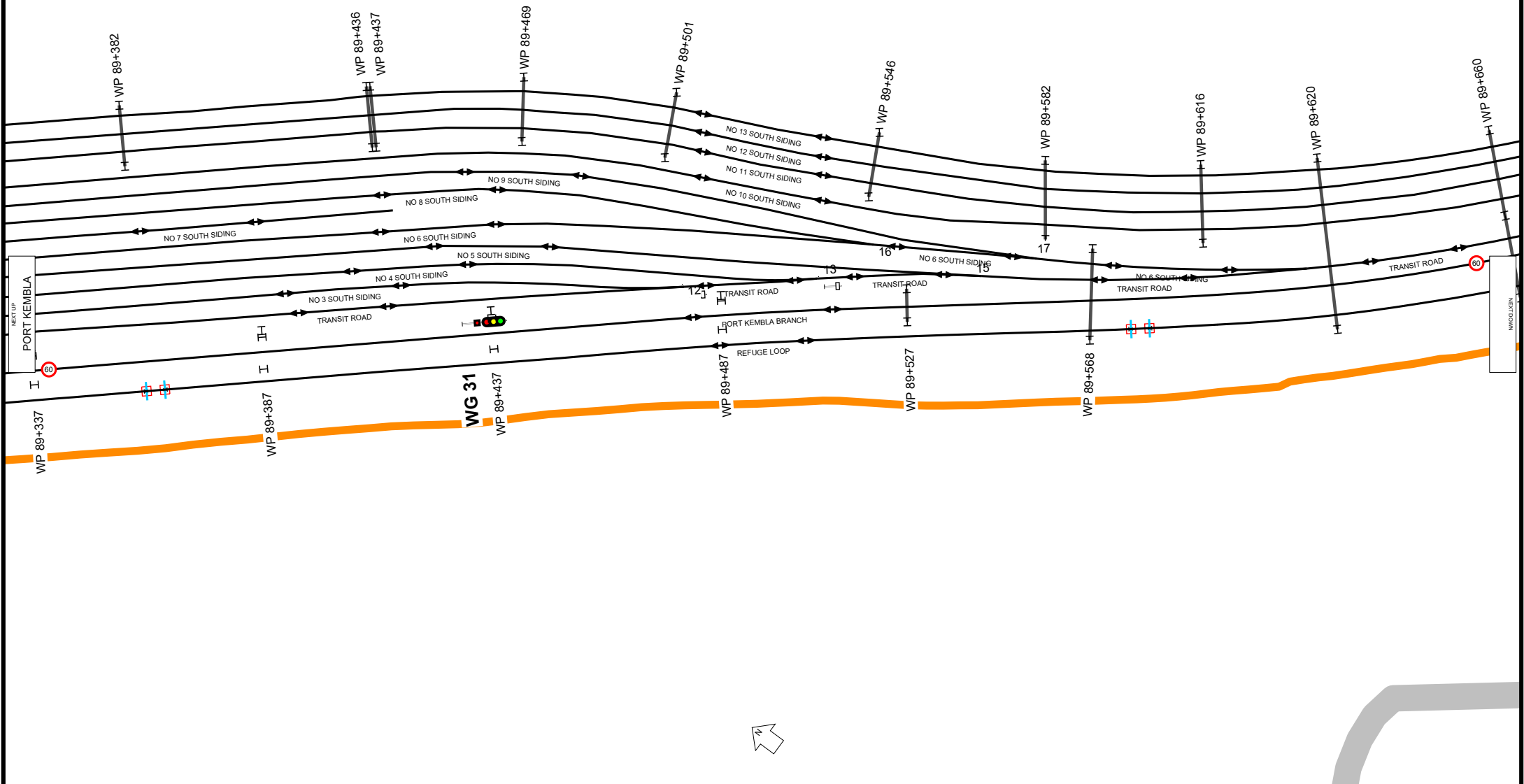
UNCONTROLLED WHEN PRINTED

Data shown here may not have been field verified.
 Do not use for operational purposes without checking against a controlled document.
 For data issues contact GIS.Support@transport.nsw.gov.au

92.195km

92.356km

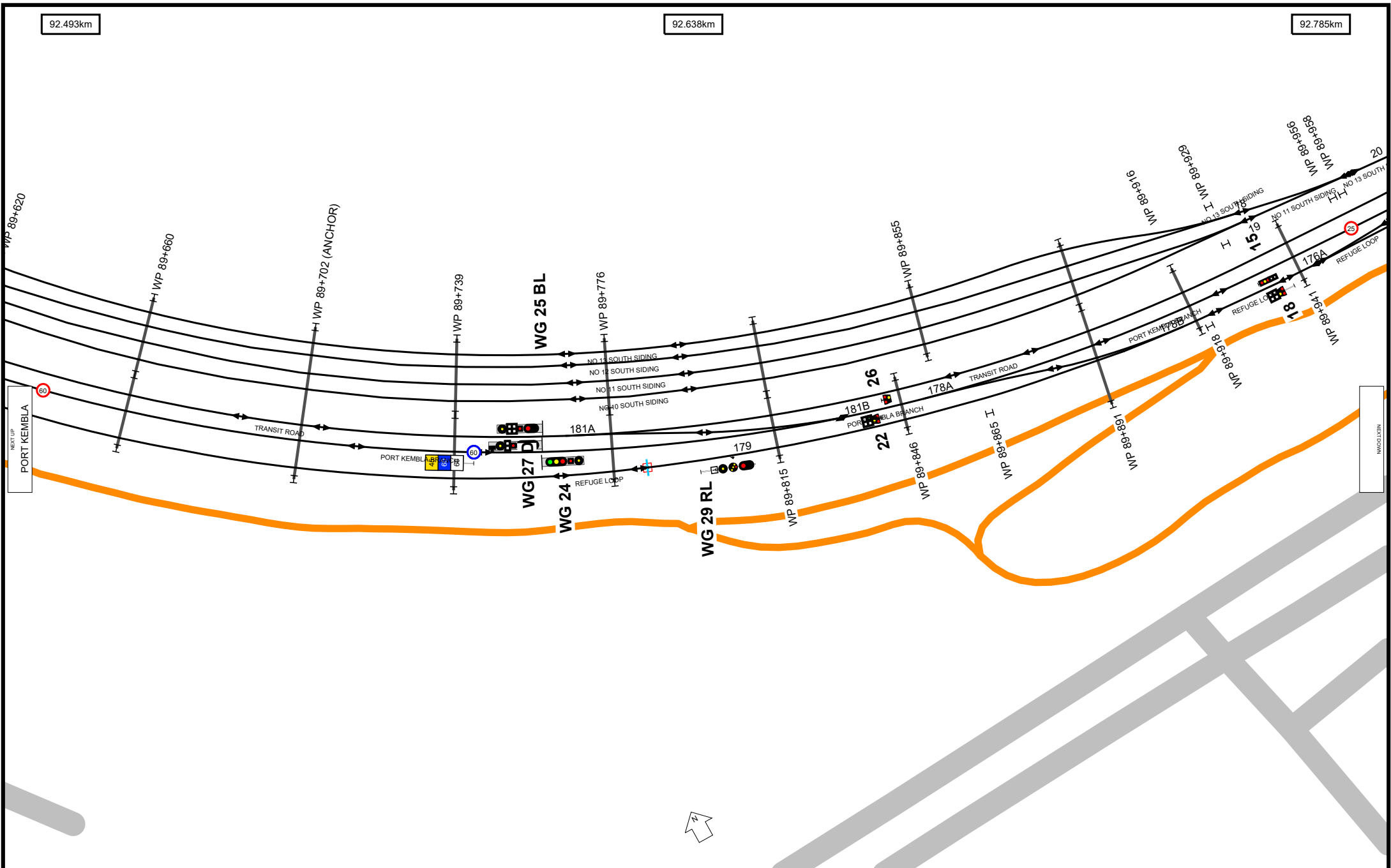
92.493km



92.493km

92.638km

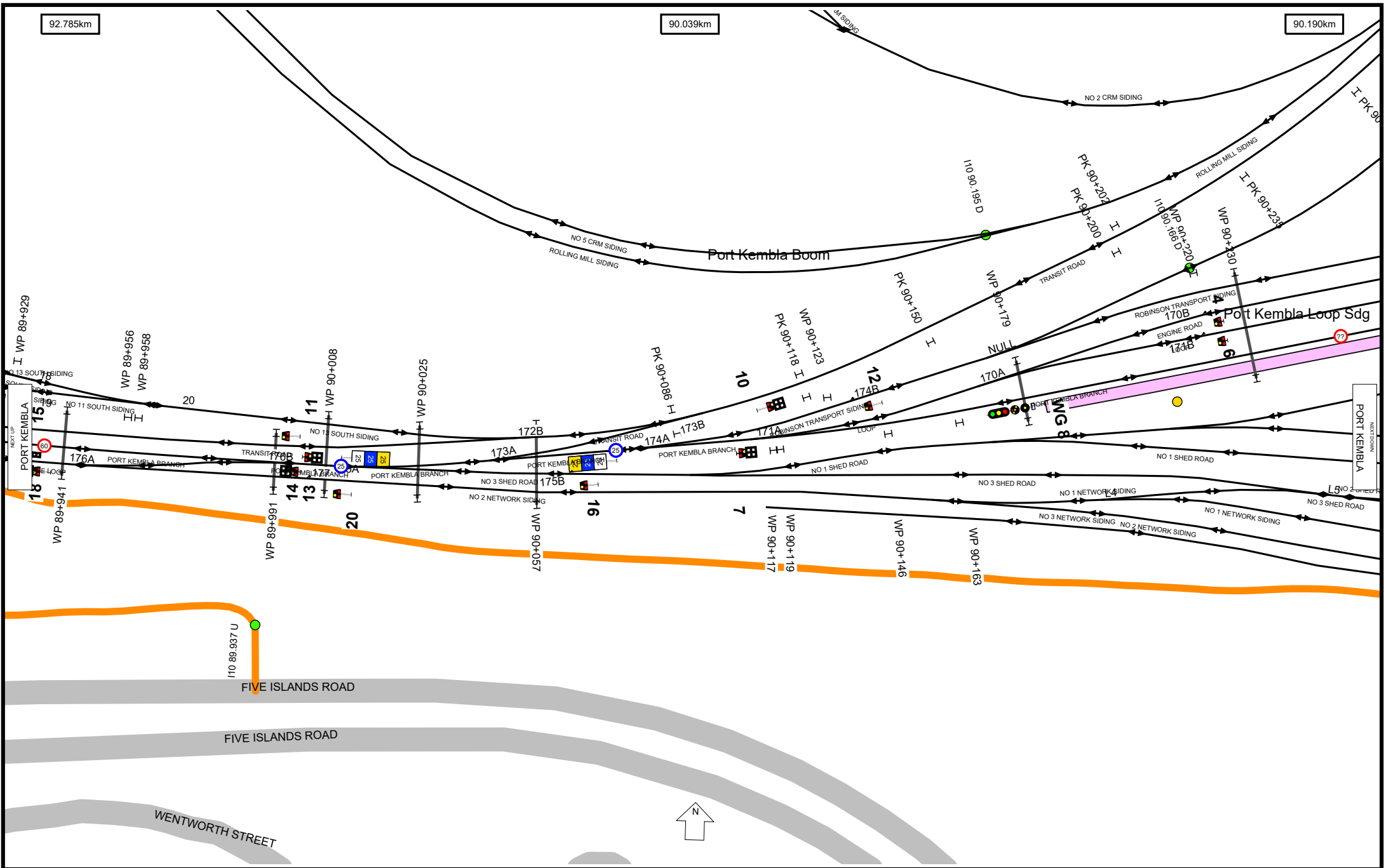
92.785km



UNCONTROLLED WHEN PRINTED

Data shown here may not have been field verified.
 Do not use for operational purposes without checking against a controlled document.
 For data issues contact GIS.Support@transport.nsw.gov.au



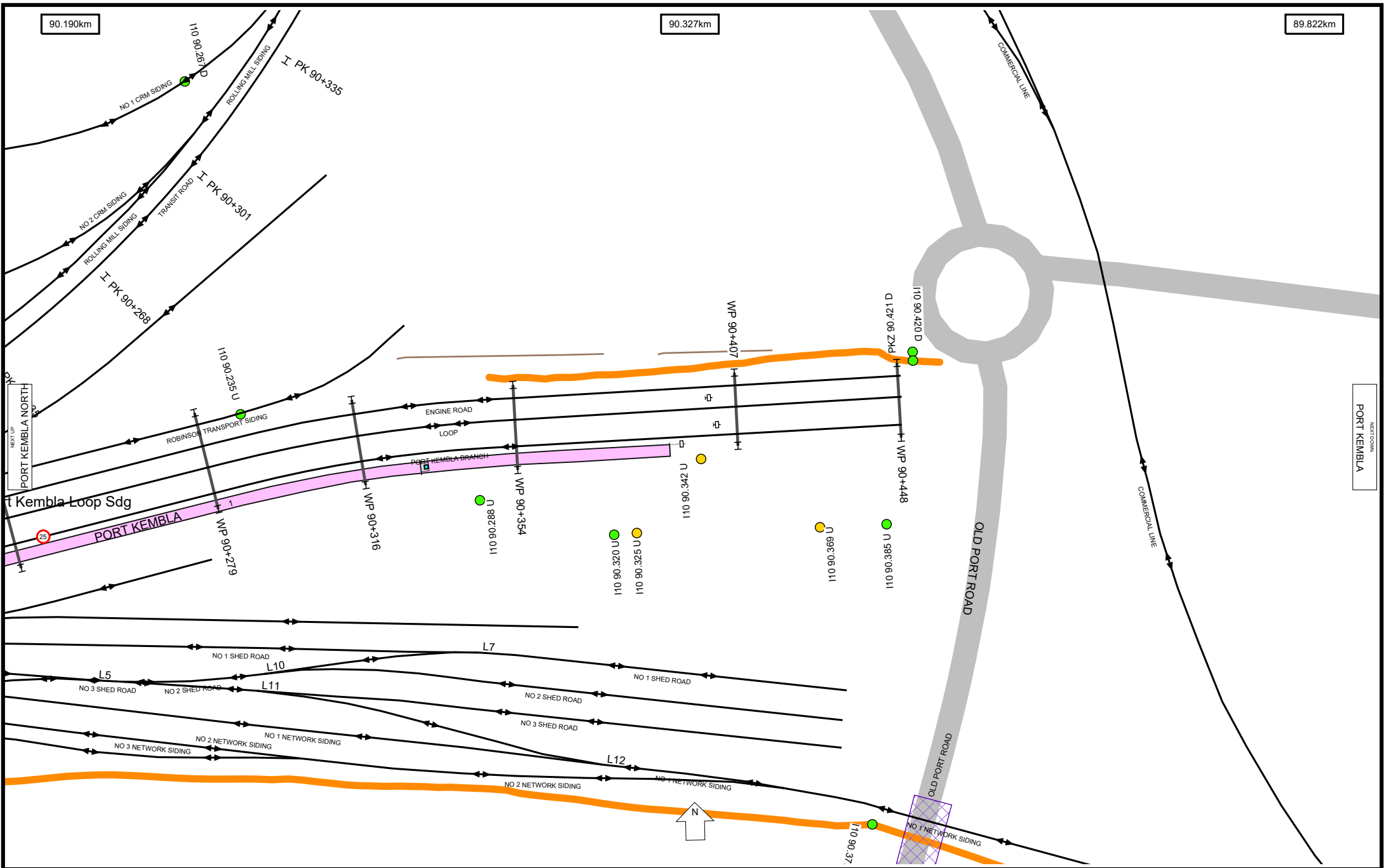


92.785km

90.039km

90.190km

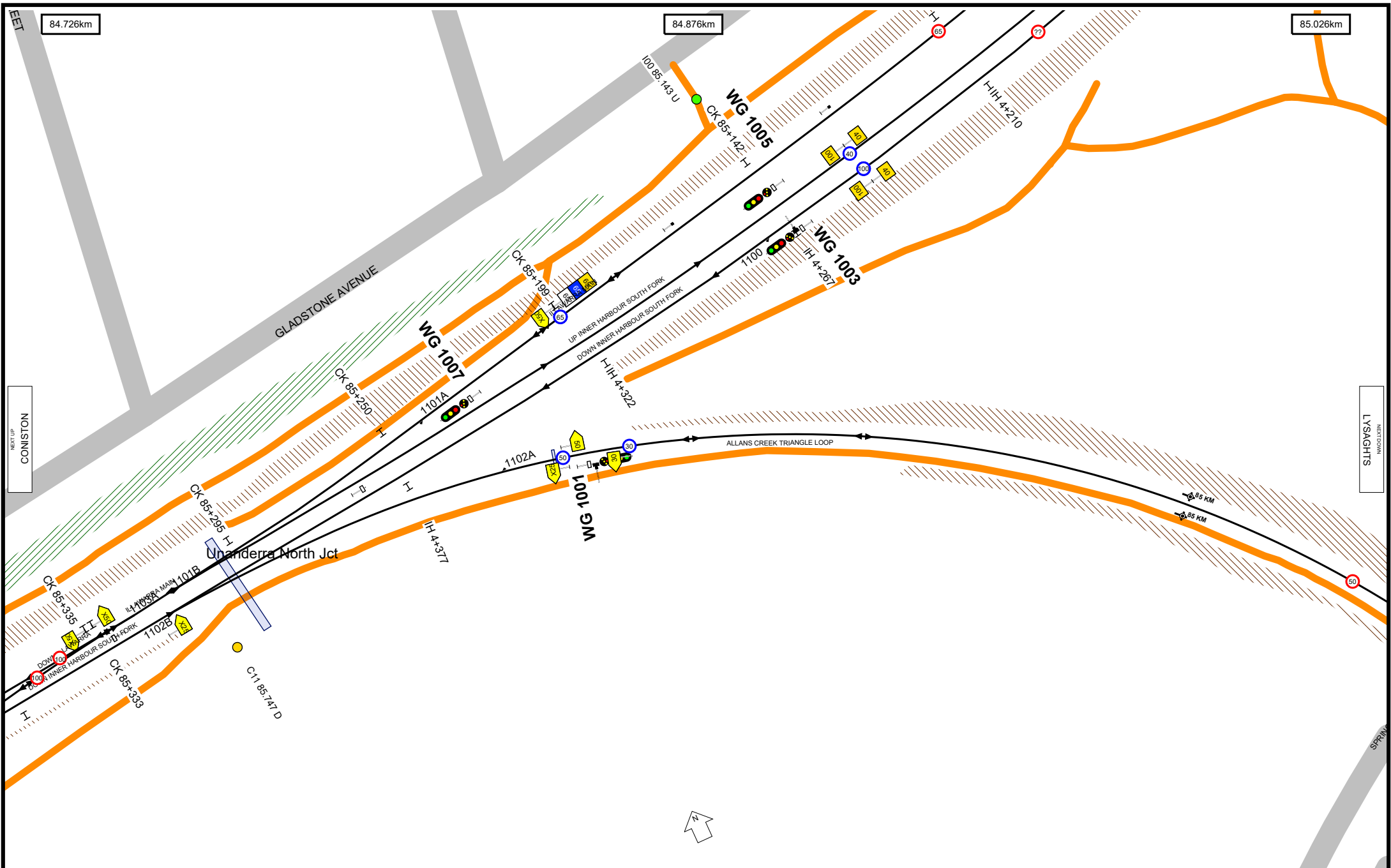




UNCONTROLLED WHEN PRINTED

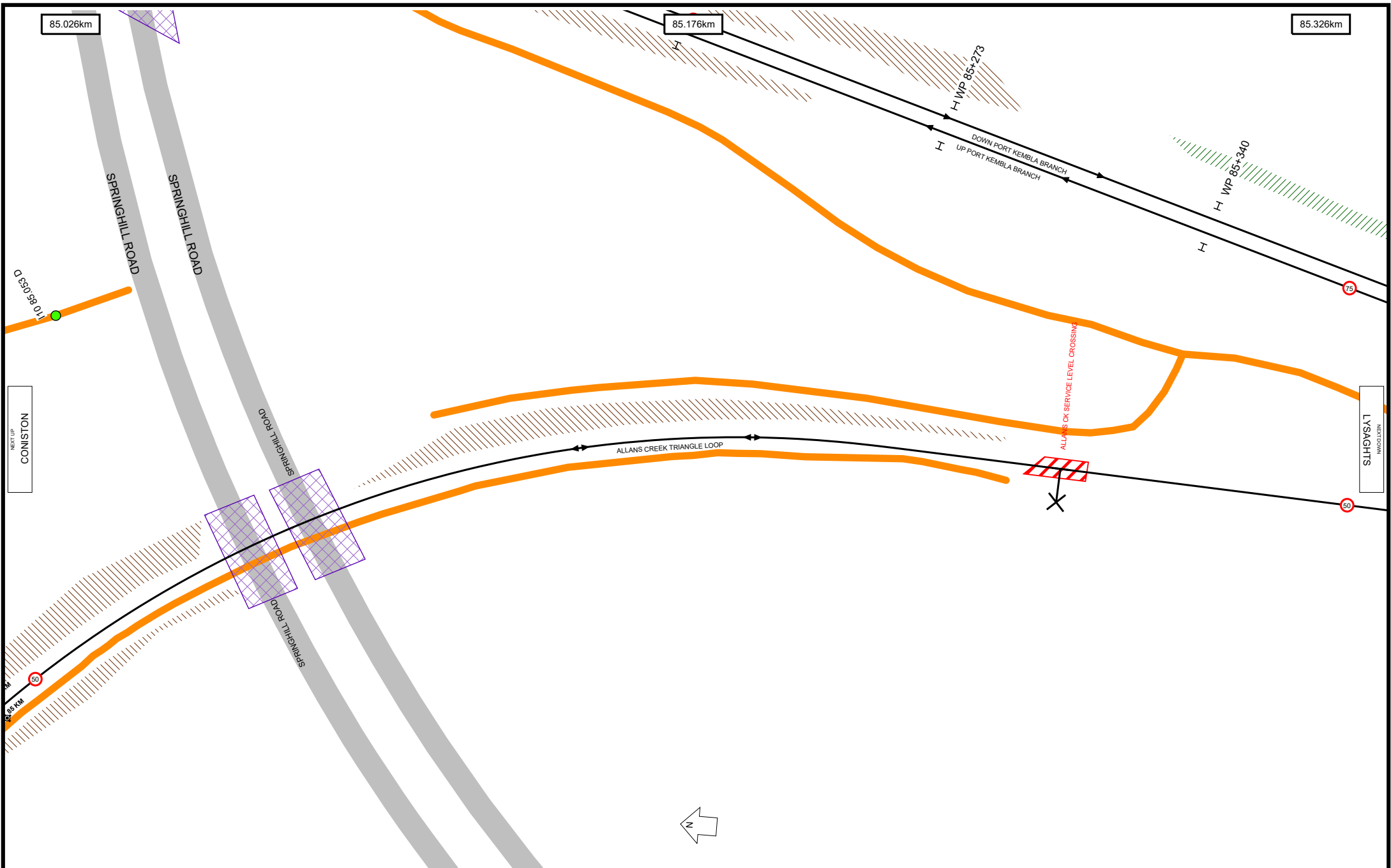
Data shown here may not have been field verified.
 Do not use for operational purposes without checking against a controlled document.
 For data issues contact GIS.Support@transport.nsw.gov.au





UNCONTROLLED WHEN PRINTED

Data shown here may not have been field verified.
 Do not use for operational purposes without checking against a controlled document.
 For data issues contact GIS.Support@transport.nsw.gov.au



85.326km

85.476km

85.524km



UNCONTROLLED WHEN PRINTED

Data shown here may not have been field verified.
 Do not use for operational purposes without checking against a controlled document.
 For data issues contact GIS.Support@transport.nsw.gov.au










Location Index

ALLANS CREEK	7
CONISTON JCT	2
CONISTON SUB STN	2
CONISTON TRACTION SUBSTATION	2
CRINGILA	10
CRINGILA YARD	10
INNER HARBOUR JCT	2
LYSAGHTS PLATFORM	6
LYSAGHTS YARD	6
PORT KEMBLA	17
PORT KEMBLA AUSTRALIAN FERTILIZERS NO 3	16
PORT KEMBLA B H P CRUSHER	16
PORT KEMBLA BOOM	16
PORT KEMBLA F/GANG	16
PORT KEMBLA LOCO	17
PORT KEMBLA LOOP SDG	16
PORT KEMBLA NIMMO	16
PORT KEMBLA NORTH	12
PORT KEMBLA NORTH NTH YARD	13
PORT KEMBLA NORTH STH YARD	12
PORT KEMBLA OUT HBR ANL	16
PORT KEMBLA PORTS CORP BOUNDARY IH TO UNJ	2
PORT KEMBLA ROBINSON ILLAWARRRA	
TRANS	16
UNANDERRA NORTH JCT	18

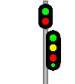




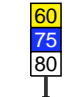
Bridge Index

ALLANS CREEK	7
ALLANS CREEK ACCESS BRIDGE	7
BLUESCOPE RAIL FLYOVER	12
BLUESCOPE RAILWAY FLYOVER	8
BLUESCOPE ROAD	8
BRIDGE STREET	2
CRINGILA STATION FOOTBRIDGE	10
CRINGILA WATER CROSSING	10
CRINGILLA BLUESCOPE SERVICE CROSSING	11
FLINDERS STREET	12
INNER HARBOUR FLYOVER	3
LYSAGHTS BLUESCOPE SERVICE BRIDGE	5
LYSAGHTS BLUESCOPE SERVICE CROSSING	7
LYSAGHTS STATION FOOTBRIDGE	6
LYSAGHTS WATER CROSSING	7
OLD PORT ROAD	17
PORT KEMBLA NORTH STATION FOOTBRIDGE	12
PORT KEMBLA NORTH WATER CROSSING	11
PT KEMBLA NTH BLUESCOPE SERVICE CROSSING	11
SPRINGHILL ROAD	3

Track & Point

-  Existing Track Centreline
-  Under Construction / Service Withdrawn
-  Proposed Track
-  Turnout Point
-  Catch Point
-  Derail Point
-  Turntable



Signal & Sign

-  Signal
-  Warning Light
-  Warning Light - Double
-  End Yard Limit Sign
-  Yard Limit Sign
-  Speed Sign




Station

-  Platform

Kilometre Post

-  Whole Kilometre Post
-  Half Kilometre Post

Corridor Access

-  Access Gate
-  Pedestrian Access Gate
-  Access Road


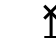
Safety

-  Refuge







Road

-  Public Road

Level Crossing & Take Off

-  Level Crossing Boundary
-  Level Crossing Location


Bridge

-  Overbridge
-  Underbridge
-  Rail Flyover
-  Rail Dive
-  Pedestrian Footbridge
-  Pedestrian Subway

Tunnel

-  Tunnel Section Coverage

Embankment

-  Embankment

Cutting

-  Cutting

Wall

-  Wall

Culvert

-  Culvert

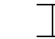


Waterway

-  Waterway

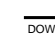





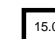
Substation

-  Substation Boundary

Overhead Wiring Structure

-  OHWS
-  OHWS Centreline
-  Wood Pole

Additional Map Features

-  Track Name & Direction Indicator
-  Maximum Train Entry Speed Indicator
-  Maximum Train Speed Change Indicator
-  Kilometrage Reference Indicator
-  Map Strip Join Indicator
-  Next Station Up
-  Next Station Down